

**Mississippi University for Women
Fact Book
2004-2005**



Office of Institutional Research

**Whitfield Hall
1100 College St., W-160
Columbus, MS 39701**

MISSISSIPPI UNIVERSITY FOR WOMEN
FACT BOOK 2004 - 2005

Table of Contents

MUW Vision, Mission, & Guiding Principles i
MUW Goals iii
MUW Profile iv
Organizational Chartv

<u>Table</u>	<u>Description</u>	
1.	New Freshman Student Yield Analysis	1
1A.	Transfer Student Yield Analysis	2
1B.	First-time, Full-time Freshman Headcount - Fall Terms (Graph).....	3
2.	First-time Freshman ACT Scores	4
3.	Fall 2004 Grade Distribution by Division	5
4.	Unduplicated Enrollment by Undergraduate and Graduate Students - Fall 2004.....	6
5.	Headcount (Duplicated) and FTE Enrollment - Fall Terms.....	7
	Headcount (Duplicated) and FTE Enrollment - Fall Terms (Graph).....	8
5a.	Unduplicated Headcount and FTE Enrollment - Fall Terms	9
	Unduplicated Headcount and FTE Enrollment - Fall Terms (Graph).....	10
6.	Unduplicated Enrollment and Credit Hour Production by FT/PT Status	11
	FT/PT Unduplicated Headcount - Fall Terms (Graph).....	12
7.	Unduplicated Enrollment By Gender - Fall 1995 to Fall 2004.....	13
	Unduplicated Enrollment By Gender - Fall 1995 to Fall 2004 (Graph)	14
8.	Unduplicated Enrollment By Ethnicity.....	15
	Unduplicated Enrollment By Ethnicity (Graph).....	16
9.	Class Type Enrollment.....	17
10.	Unduplicated Enrollment By Student Classification - Fall Terms.....	18
	Unduplicated Enrollment By Student Classification - Fall Terms (Graph)...	19

11.	Non-traditional Vs. Traditional Students - Unduplicated Headcount - Fall Terms	20
	Non-traditional Vs. Traditional Student (Graph).....	21
12.	Faculty Profile.....	22
	Full-time Faculty Profile (Graph).....	23
13.	Unduplicated Headcount Enrollment by Credit Hours and Student Classification	24
14.	Age Distribution by Student Classification: Unduplicated Headcount	25
15.	Credit Hour Generation by Division.....	26
	Credit Hour Generation by Division (Graph).....	27
16.	Enrollment by Major and Program Type (Unduplicated).....	28
17.	Unduplicated Headcount Enrollment by Division: Fall 2002 - Fall 2004	30
18.	Faculty Profile and Student Credit Hour Production.....	31
19.	Unduplicated Enrollment by State of Residence - Fall 2000 - 2004	32
19A.	Unduplicated Enrollment by State of Residence and Student Classification	33
20.	Unduplicated Headcount Enrollment by Country - Fall 2000-2004.....	34
21.	Unduplicated Enrollment by MS County: Fall 2000-2004.....	36
22.	Residence Hall Student Headcount.....	38
22A.	Residence Hall Students Vs. Commuter Students Headcount - Fall 2004	39
23.	Degrees Granted by Major, Ethnicity, and Gender - Academic Year 2004	40
24.	History of Degrees Granted by Major and Gender.....	41
	Degrees Granted AY 1990-2004 (Graph).....	43
25.	Summary of Budgeted E&G Revenues and Expenditures	44
	2004-2005 E&G Revenues by Budget Entity (Graph).....	45
	2002-2005 E&G Expenditures by Budget Entity (Graph).....	46
27.	IHL Distribution of Capital Improvement Funding to MUW	47
28.	IHL Distribution of Capital Improvement Funding by Institution	48

APPENDIX: Explanation of Terms

Mississippi University for Women

Vision, Mission and Guiding Principles

Vision

Building on its long tradition of excellence in liberal arts and professional education, as well as its historic focus on academic and leadership development for women, Mississippi University for Women will continue to be a university that prepares both women and men for successful lives by providing a high-quality education in a personalized learning environment.

Mission

A Carnegie Master's II public institution, Mississippi University for Women provides high-quality undergraduate and graduate education for women and men in a variety of liberal arts and professional programs, while maintaining its historic commitment to academic and leadership development for women. MUW provides education in Business and Communication, Education and Human Sciences, Fine and Performing Arts, Health and Kinesiology, Humanities, Culinary Arts, Nursing, Science and Mathematics, utilizing small classes and emphasizing a personalized learning environment. The graduates of MUW are prepared for competitive careers and excellent graduate and professional schools. MUW provides educational opportunities throughout Mississippi and the United States while addressing the unique educational and public service needs of northeast Mississippi and adjoining counties in northwest Alabama.

Guiding Principles

MUW provides high-quality instructional programs that emphasize teaching and learning. With faculty and staff of the highest caliber, MUW is dedicated to providing a campus environment for students that encourages lifelong learning, strong career preparation, and personal growth. Graduates are expected to have skills in communication, technology, and critical thinking, as well as an awareness of self, gender-related issues, cultural diversity, and responsible citizenship.

MUW is student oriented. MUW provides small classes and emphasizes personalized student attention, so that each student will have the opportunity to succeed. MUW offers a student-life program that stimulates learning and leadership development.

MUW values research, scholarship, and creativity. While MUW is primarily a teaching institution, the university supports research, scholarship, and creativity to enhance the professional development of faculty and staff in order to better prepare students.

MUW is committed to diversity among its faculty, staff, and students. The faculty, staff, and students of MUW represent the global society in which we live. MUW believes that diversity allows students to grow in their understanding of self and others.

MUW endorses sound organizational principles. MUW is committed to operational efficiency, collaborative strategic planning, institutional effectiveness, and creative problem solving.

MUW meets regional, state, and national needs for higher education. MUW responds to the needs of

the local community by providing cultural activities; programs for intellectual, professional, and social development; and by assisting in economic development. MUW extends its outreach to the state and nation using multiple delivery methods, including the internet and other advanced systems.

MUW is committed to public service. MUW forms partnerships with businesses, as well as with educational, governmental, public service, and charitable organizations, to create opportunities that provide economic and social advantages for the institution, community, and region.

Approved by the Mississippi IHL Board on January 15, 2004

“W-2009”
A Strategic Plan for MUW
Goals

- MUW Goal 1:** Provide high quality, student-centered instructional programs in a personalized learning environment.
- MUW Goal 2:** Ensure high quality academic and leadership preparation for women.
- MUW Goal 3:** Provide student life programs that stimulate intellectual, social, emotional, physical, and leadership development.
- MUW Goal 4:** Increase enrollment through effective recruitment and retention strategies.
- MUW Goal 5:** Promote effective organizational principles.
- MUW Goal 6:** Provide programs and services that enhance the cultural, intellectual, social, and professional development of the citizens of our region, state, and nation.
- MUW Goal 7:** Promote diversity among MUW students, faculty, and staff.
- MUW Goal 8:** Encourage research, scholarship, and creative endeavors to enhance instruction and professional development.
- MUW Goal 9:** Provide physical resources, infrastructure, and technology to advance the educational, operational, and public service goals of the University.
- MUW Goal 10:** Build partnerships and public awareness to support the University’s mission and to promote institutional and economic development.

Approved by the President on March 8, 2004

MUW Profile

2,231 unduplicated students are enrolled at MUW for the Fall 2004 semester.

- 75.3 percent are full-time students
- 84.8 percent are female
- 15.2 percent are male
- 64.4 percent are white
- 31.8 percent are African-American
- 14.8 percent are new transfer students
- 10.8 percent are first-time, full-time freshmen students

26.06 is the average age of a MUW student

- 25.35 is the average age of a MUW male student
- 26.19 is the average age of a MUW female student.
- 62 percent of MUW students are 24 years old or younger
- 38 percent of MUW students are 25 or older

Student to Faculty FTE Ratio

The Student to Faculty FTE ratio is approximately 12 to 1

MUW Employees

- i** MUW has approximately 344 full-time employees
- i** Approximately 62.5 percent of full-time MUW employees are female
- i** Approximately 21.8 percent of full-time MUW employees are minorities

Student Fees 2004-2005 AY

Under graduate

Semester Hour	\$145.67 (In-state)
Semester Hour	\$351.79 (Out-of-state)

Graduate

Semester Hour	\$194.22 (In-state)
Semester Hour	\$469.00 (Out-of-state)

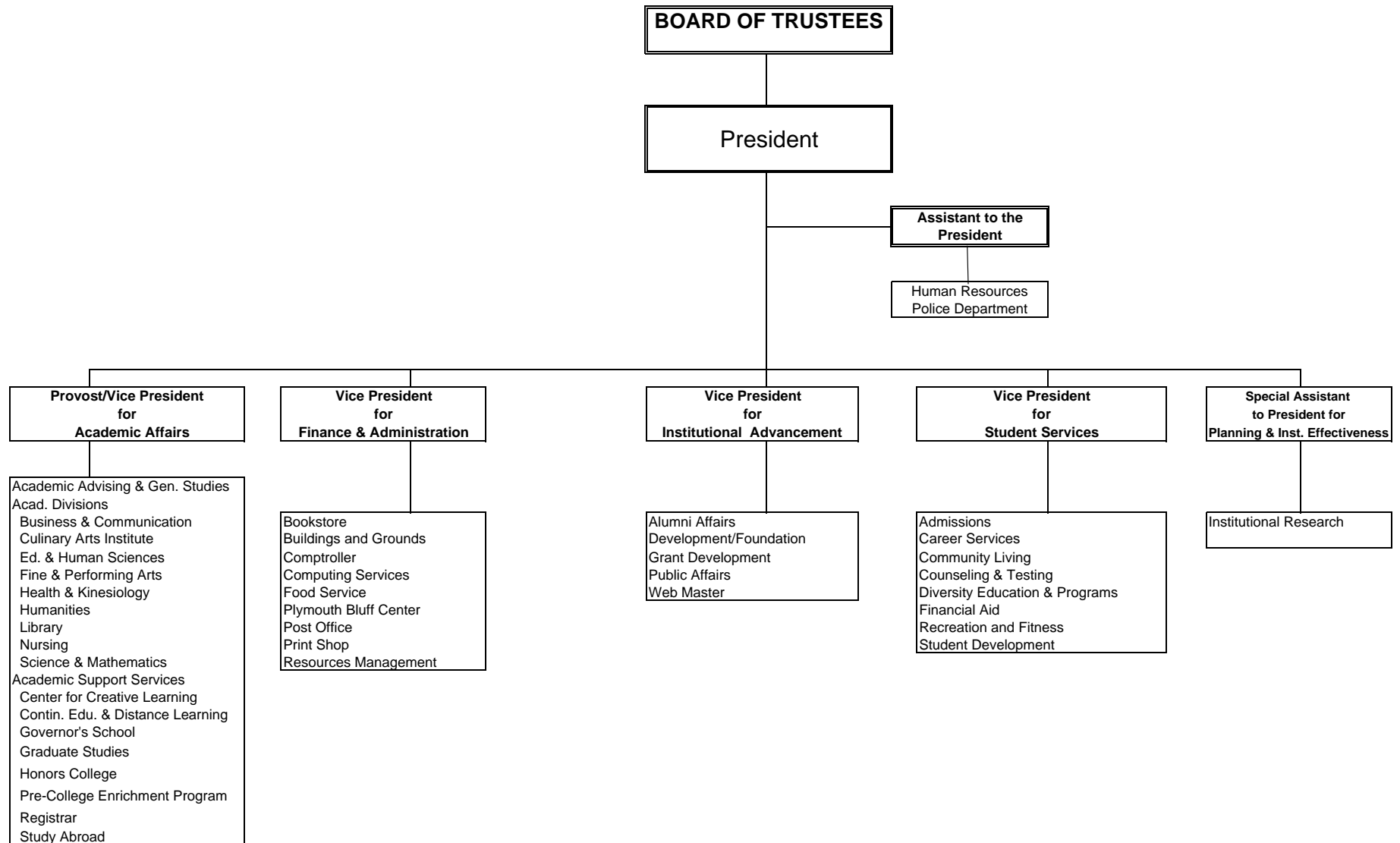
Grounds and Buildings

The campus covers 114 acres in residential Columbus, MS. Twenty-three of more than 60 buildings are listed on the National Historic Register.

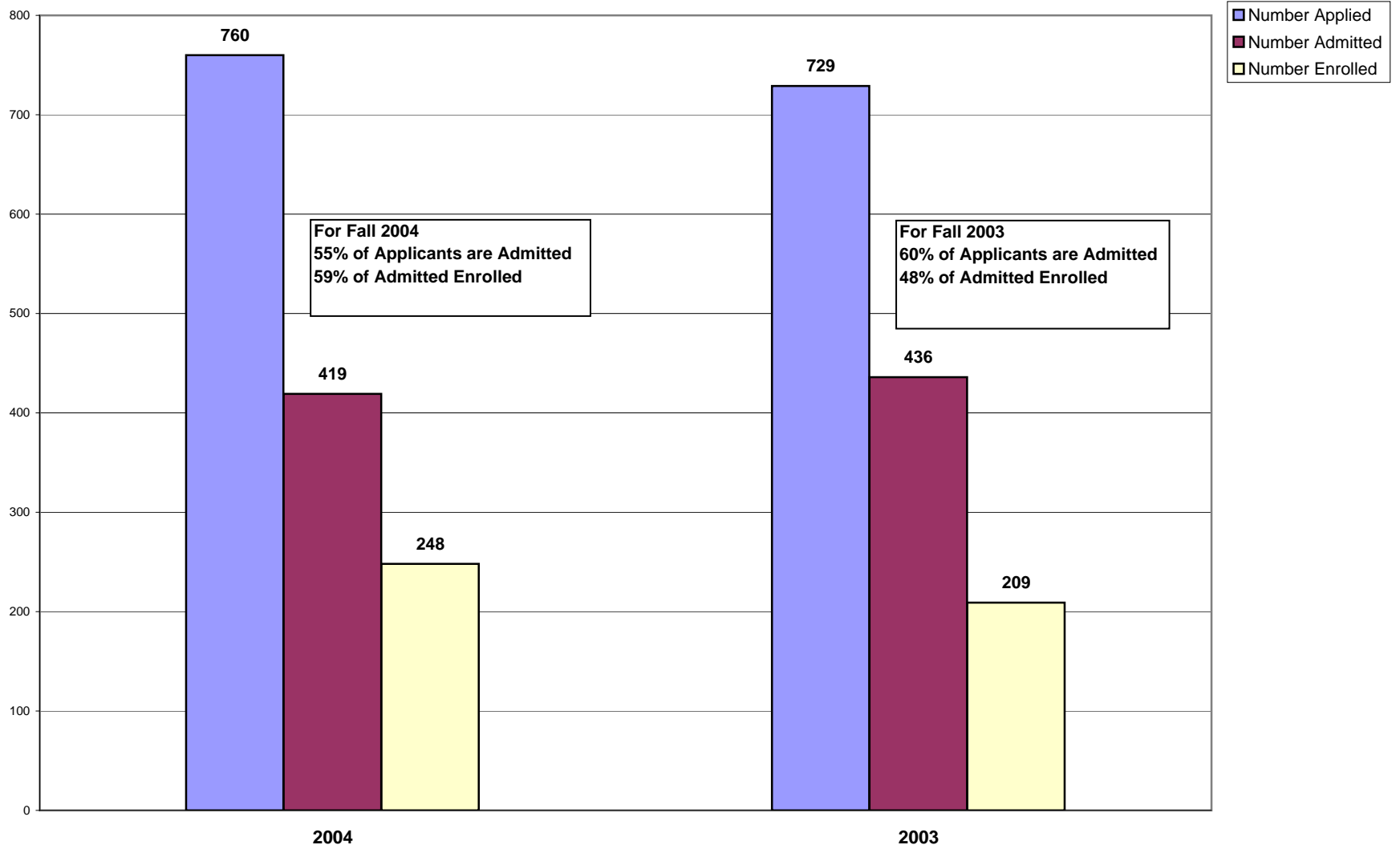
MUW is an affirmative action/equal opportunity institution.

Mississippi University for Women Organizational Chart

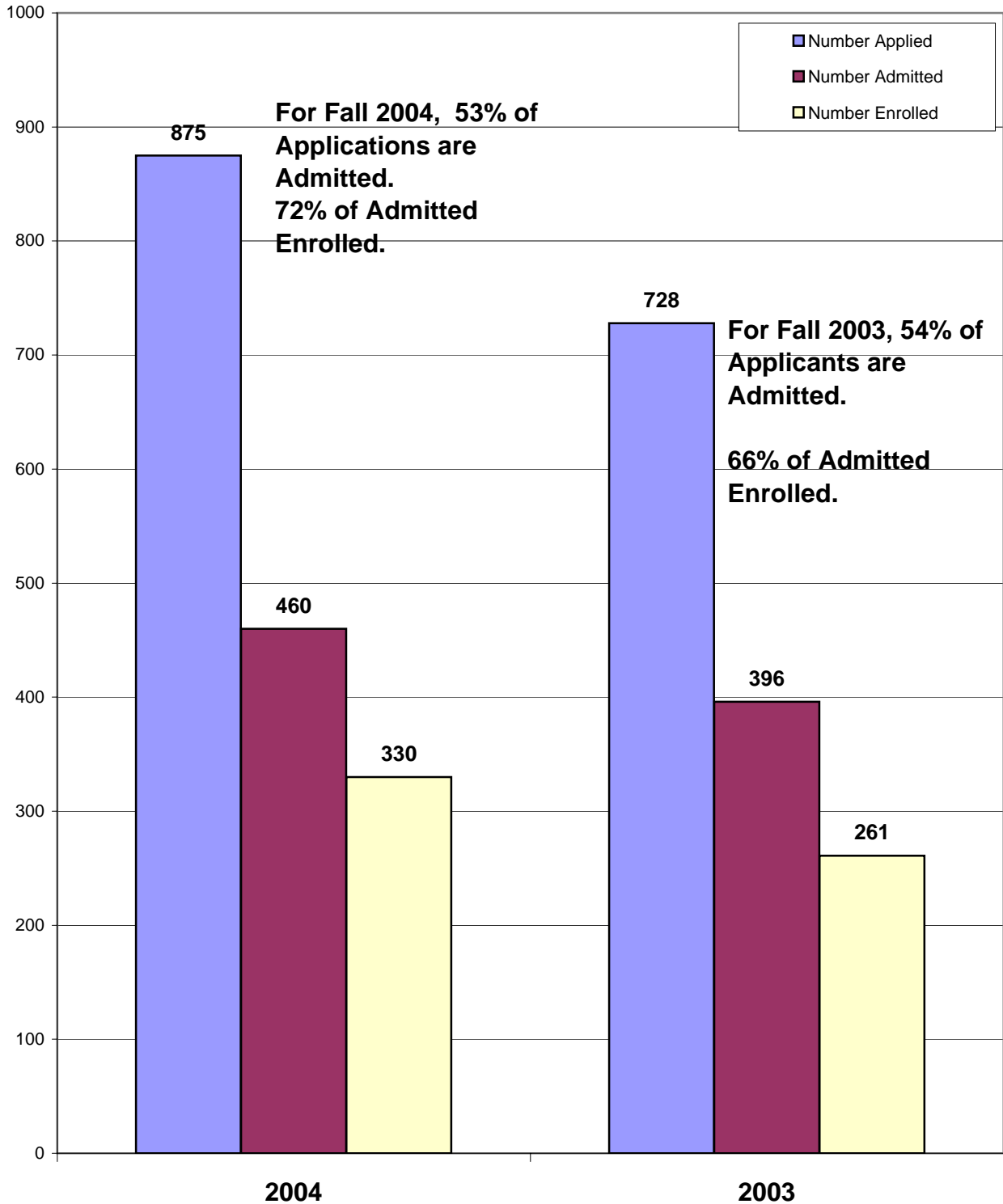
Effective 3/14/2005



**Table 1: New Freshman Student Yield Analysis
Fall 2004 & Fall 2003**



**Table 1A: Transfer Student Yield Analysis
Fall 2004 & Fall 2003**



**Table 1B: First-time, Full-time Freshman Headcount - Fall 1995 - 2004
As Reported to IHL**

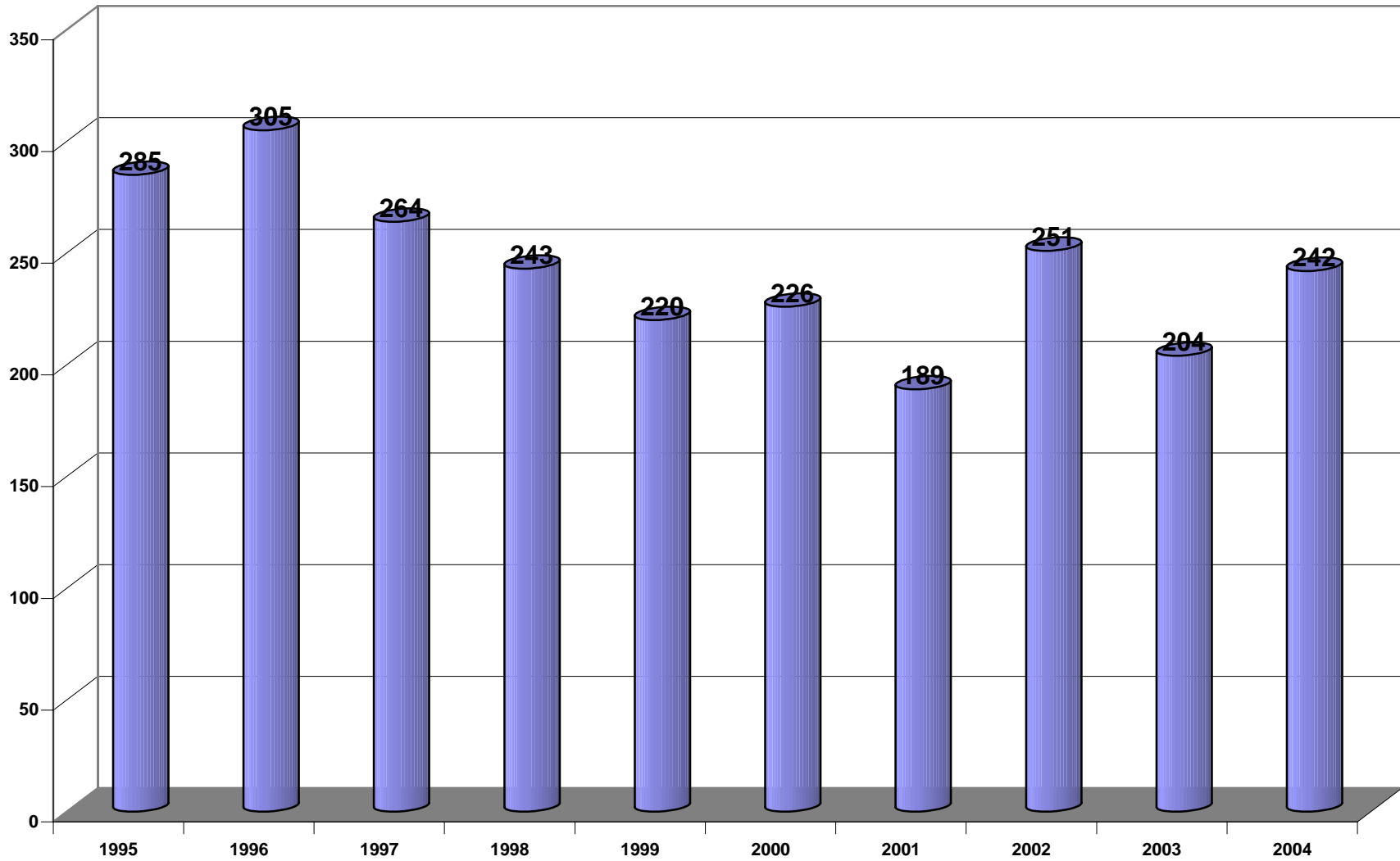


Table 2: First-time Freshman ACT Scores

Fall 2002	Composite	Math	English	Reading	Science Reasoning
Twenty-fifth percentile	18	16	19	17	18
Fiftieth percentile	21	18	21	22	20
Seventy-fifth percentile	24	21	26	26	23
Average	21.07	19.19	21.97	21.91	20.59
Minimum	14	13	11	11	12
Maximum	32	29	35	36	34

Fall 2003	Composite	Math	English	Reading	Science Reasoning
Twenty-fifth percentile	18	16	18	18	18
Fiftieth percentile	20	18	21	22	20
Seventy-fifth percentile	24	21	26	26	23
Average	20.98	18.93	21.79	22.34	20.31
Minimum	14	13	11	12	11
Maximum	29	30	33	36	31

Fall 2004	Composite	Math	English	Reading	Science Reasoning
Twenty-fifth percentile	18	17	19	18	19
Fiftieth percentile	21	18	22	21	21
Seventy-fifth percentile	24	22	25	26	23
Average	21.31	19.38	22.31	21.98	20.87
Minimum	14	7	12	8	14
Maximum	32	30	34	36	30

Table 3: Fall 2004 Grade Distribution by Division

DIVISION	A		B		C		D		F		Other								Other Total		Total
	#	%	#	%	#	%	#	%	#	%	AU	I	NA	NC	P	W	WF	WP	#	%	
Business & Communication	401	37%	330	30%	172	16%	51	5%	90	8%	1	2	0	0	0	17	4	21	45	4%	1089
Education & Human Sciences	940	50%	508	27%	222	12%	58	3%	70	4%	1	17	0	0	0	26	6	29	79	4%	1877
Fine & Performing Arts	483	61%	164	21%	48	6%	18	2%	39	5%	5	4	0	0	0	15	1	21	46	6%	798
Health & Kinesiology	532	68%	138	18%	30	4%	7	1%	26	3%	7	1	3	0	0	12	0	24	47	6%	780
Humanities	678	36%	561	30%	288	15%	74	4%	102	5%	5	21	1	52	0	30	7	63	179	10%	1882
Interdisciplinary Studies	60	21%	50	18%	32	11%	18	6%	21	7%	1	0	0	0	79	6	0	14	100	36%	281
Nursing	478	36%	327	25%	232	18%	47	4%	21	2%	0	6	0	0	139	35	6	19	205	16%	1310
Science & Mathematics	477	28%	377	22%	289	17%	128	8%	203	12%	4	5	0	11	88	44	9	62	223	13%	1697
UN	180	60%	33	11%	17	6%	6	2%	26	9%	0	3	0	4	20	7	0	3	37	12%	299
Total	4229	42%	2488	25%	1330	13%	407	4%	598	6%	24	59	4	67	326	192	33	256	961	10%	10013

**Table 4: Unduplicated Enrollment by Undergraduate and Graduate Students
Fall 2004**

Undergraduates

	Full-time Undergraduates			Part-time Undergraduates			Grand Total
	Males	Females	Total	Males	Females	Total	
White	172	874	1046	70	204	274	1320
African American	41	467	508	17	133	150	658
Native American	0	6	6	0	5	5	11
Asian	3	8	11	6	9	15	26
Hispanic	1	6	7	3	5	8	15
Not Identified	8	23	31	1	1	2	33
Totals	225	1384	1609	97	357	454	2063

Graduates

	Full-time Graduate Students			Part-time Graduate Students			Grand Total
	Males	Females	Total	Males	Females	Total	
White	6	49	55	8	51	59	114
African American	0	15	15	3	34	37	52
Native American	0	0	0	0	0	0	0
Asian	0	1	1	0	1	1	2
Hispanic	0	0	0	0	0	0	0
Not Identified	0	0	0	0	0	0	0
Totals	6	65	71	11	86	97	168

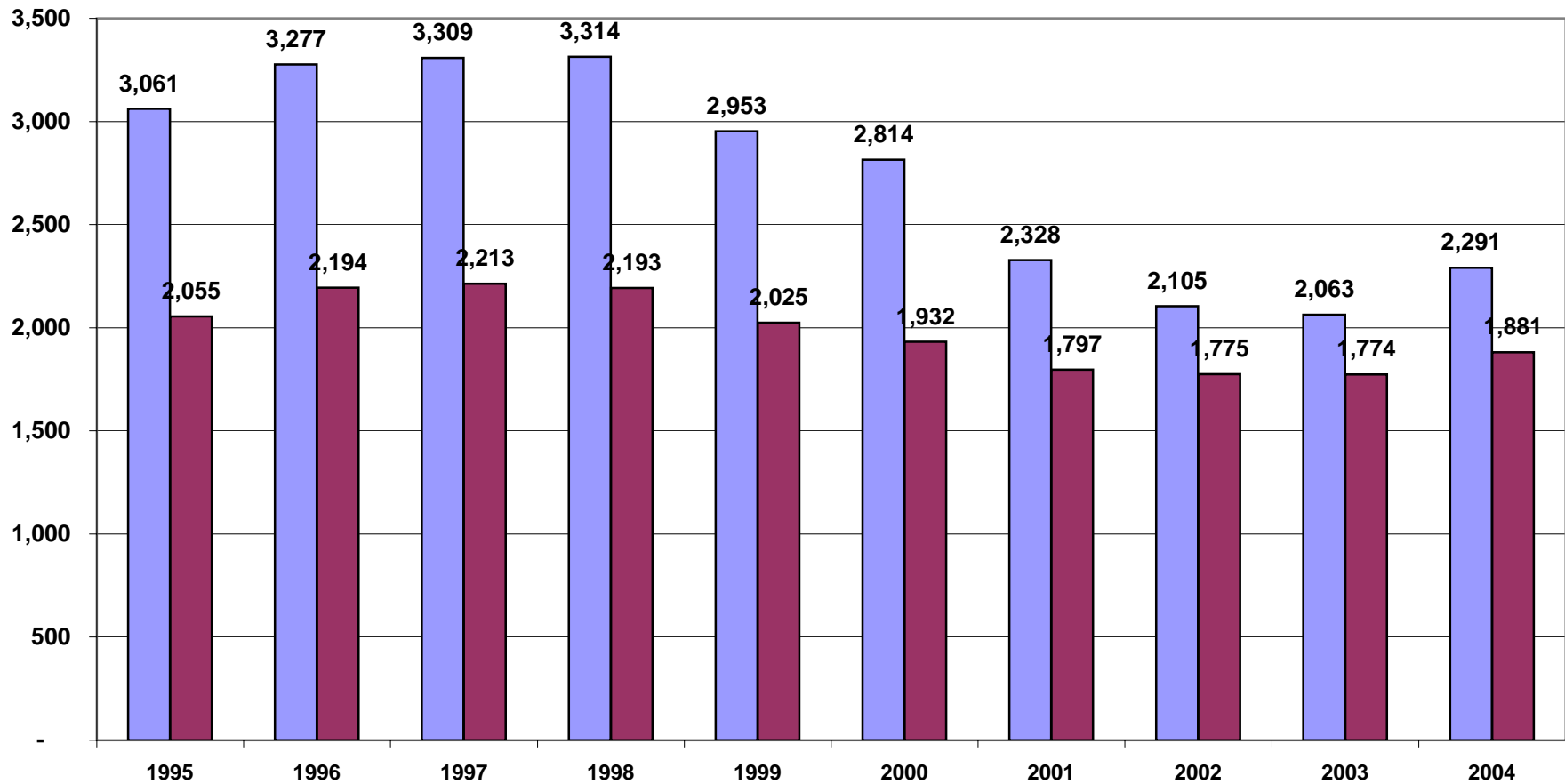
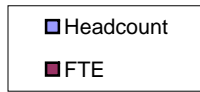
Total

	Full-time Student Headcount			Part-time Student Headcount			Grand Total
	Males	Females	Total	Males	Females	Total	
White	178	923	1101	78	255	333	1434
African American	41	482	523	20	167	187	710
Native American	0	6	6	0	5	5	11
Asian	3	9	12	6	10	16	28
Hispanic	1	6	7	3	5	8	15
Not Identified	8	23	31	1	1	2	33
Totals	231	1449	1680	108	443	551	2231

Table 5: HEADCOUNT (Duplicated) and FTE ENROLLMENT**Fall Terms**

Fall	Headcount	% Change Year Ago	Total Cr. Hrs.	% Change Year Ago	Total FTE	% Change Year Ago
1995	3,061		30,416		2,055	
1996	3,277	7.06%	32,237	5.99%	2,194	6.76%
1997	3,309	0.98%	33,004	2.38%	2,213	0.87%
1998	3,314	0.15%	30,996	-6.08%	2,193	-0.90%
1999	2,953	-10.89%	29,212	-5.76%	2,025	-7.68%
2000	2,814	-4.71%	27,785	-4.88%	1,932	-4.57%
2001	2,328	-17.27%	26,370	-5.09%	1,797	-6.97%
2002	2,105	-9.58%	26,356	-0.05%	1,775	-1.24%
2003	2,063	-2.00%	26,352	-0.02%	1,774	-0.06%
2004	2,291	11.05%	27,899	5.87%	1,881	6.03%

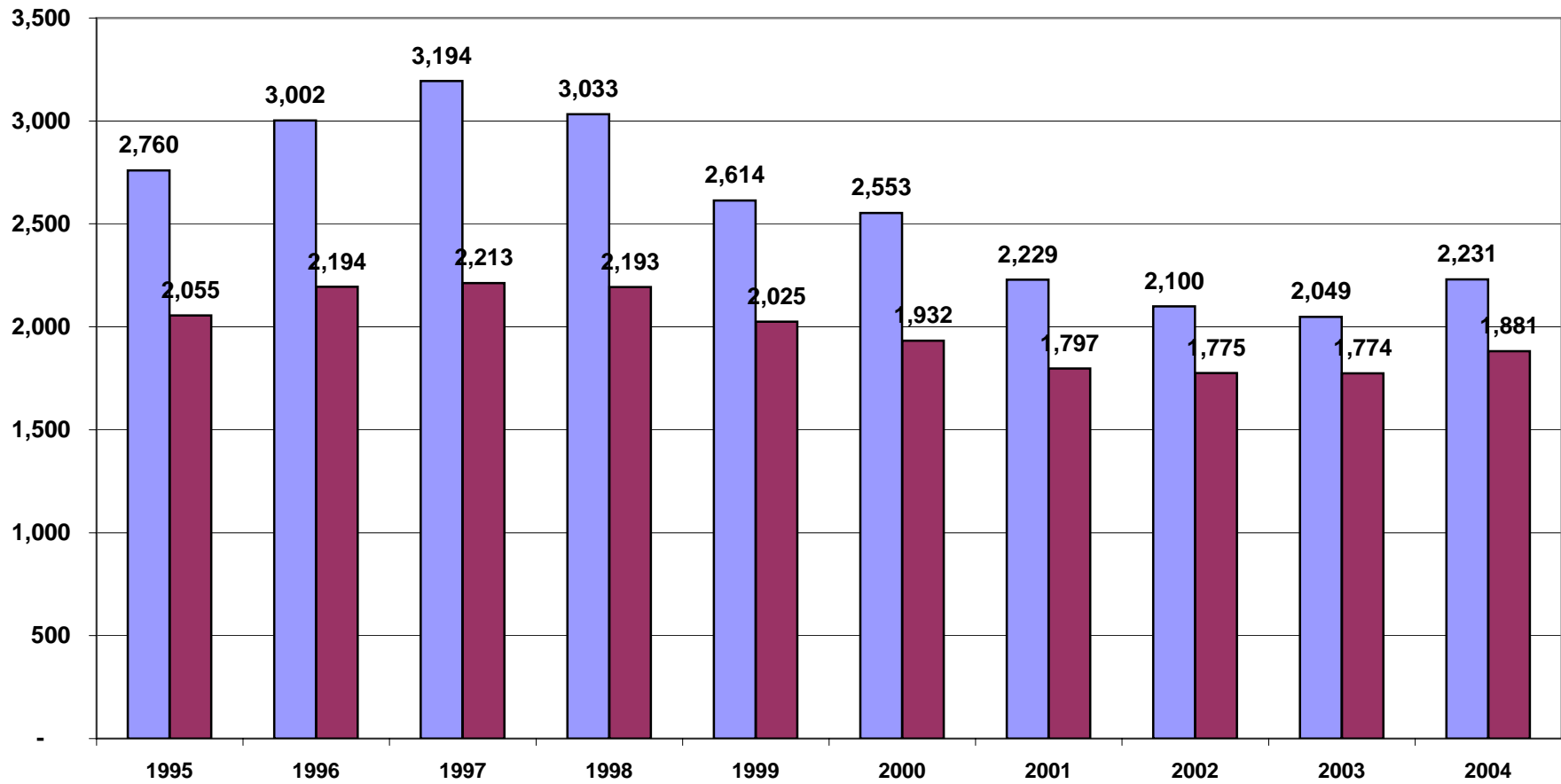
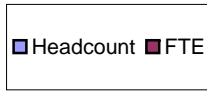
Headcount (Duplicated) and FTE Enrollment Fall Terms



**Table 5a: UNDUPLICATED HEADCOUNT and FTE ENROLLMENT
Fall Terms**

Fall	Headcount	% Change Year Ago	Total Cr. Hrs.	% Change Year Ago	Total FTE	% Change Year Ago
1995	2,760		30,416		2,055	
1996	3,002	8.77%	32,237	5.99%	2,194	6.76%
1997	3,194	6.40%	33,004	2.38%	2,213	0.87%
1998	3,033	-5.04%	30,996	-6.08%	2,193	-0.90%
1999	2,614	-13.81%	29,212	-5.76%	2,025	-7.68%
2000	2,553	-2.33%	27,785	-4.88%	1,932	-4.57%
2001	2,229	-12.69%	26,370	-5.09%	1,797	-6.97%
2002	2,100	-5.79%	26,356	-0.05%	1,775	-1.24%
2003	2,049	-2.43%	26,352	-0.02%	1,774	-0.06%
2004	2,231	8.88%	27,899	5.87%	1,881	6.03%

Unduplicated Headcount and FTE Enrollment Fall Terms



**Table 6: Unduplicated Enrollment & Credit Hour Production by Full-time/Part-time Status
Fall Terms**

Fall	Headcount											Credit Hours by Student Level										
	Full-time					Part-time					Total	Full-time					Part-time					Total
	UG		GR		Total	UG		GR		Total		UG		GR		Total	UG		GR		Total	
1995	1690	61%	47	2%	1737	872	32%	151	5%	1023	2760	25541	84%	547	2%	26088	3829	13%	499	2%	4328	30416
1996	1785	59%	56	2%	1841	986	33%	175	6%	1161	3002	27106	84%	646	2%	27752	4005	12%	480	1%	4485	32237
1997	1822	57%	50	2%	1872	1143	36%	179	6%	1322	3194	27682	84%	598	2%	28280	4259	13%	465	1%	4724	33004
1998	1698	56%	57	2%	1755	1220	40%	58	2%	1278	3033	25896	84%	674	2%	26570	4203	14%	223	1%	4426	30996
1999	1626	62%	59	2%	1685	808	31%	121	5%	929	2614	24713	85%	698	2%	25411	3370	12%	431	1%	3801	29212
2000	1551	61%	66	3%	1617	858	34%	78	3%	936	2553	23511	85%	759	3%	24270	3182	11%	333	1%	3515	27785
2001	1484	67%	70	3%	1554	588	26%	87	4%	675	2229	22650	86%	781	3%	23431	2552	10%	387	1%	2939	26370
2002	1494	71%	61	3%	1555	462	22%	83	4%	545	2100	22811	87%	678	3%	23489	2476	9%	391	1%	2867	26356
2003	1527	75%	56	3%	1583	390	19%	76	4%	466	2049	23148	88%	674	3%	23822	2205	8%	325	1%	2530	26352
2004	1609	72%	71	3%	1680	454	20%	97	4%	551	2231	24100	86%	859	3%	24959	2493	9%	447	2%	2940	27899

Note 1: Part-time is defined as UG enrolled 11 Cr. hrs or less or GR enrolled 8 Cr. Hrs or less.

Note 2: Full-time is defined as UG enrolled 12 Cr. Hrs or more or GR enrolled 9 Cr. Hrs or more.

Note 3: FT and PT headcount and credit hours data are based on the 10th day of Enrollment.

Full-time & Part-time Unduplicated Headcount Fall Terms

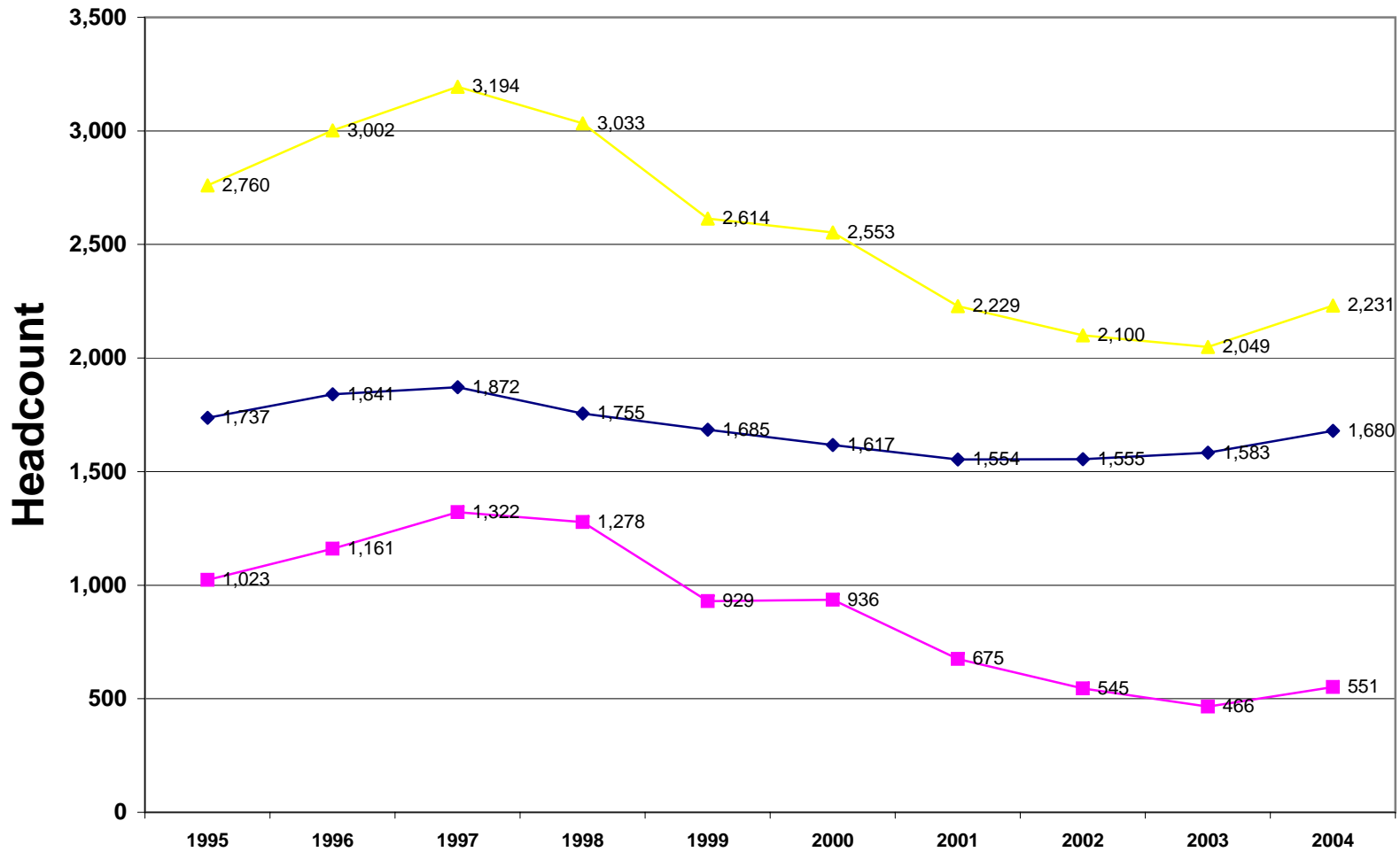
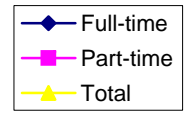
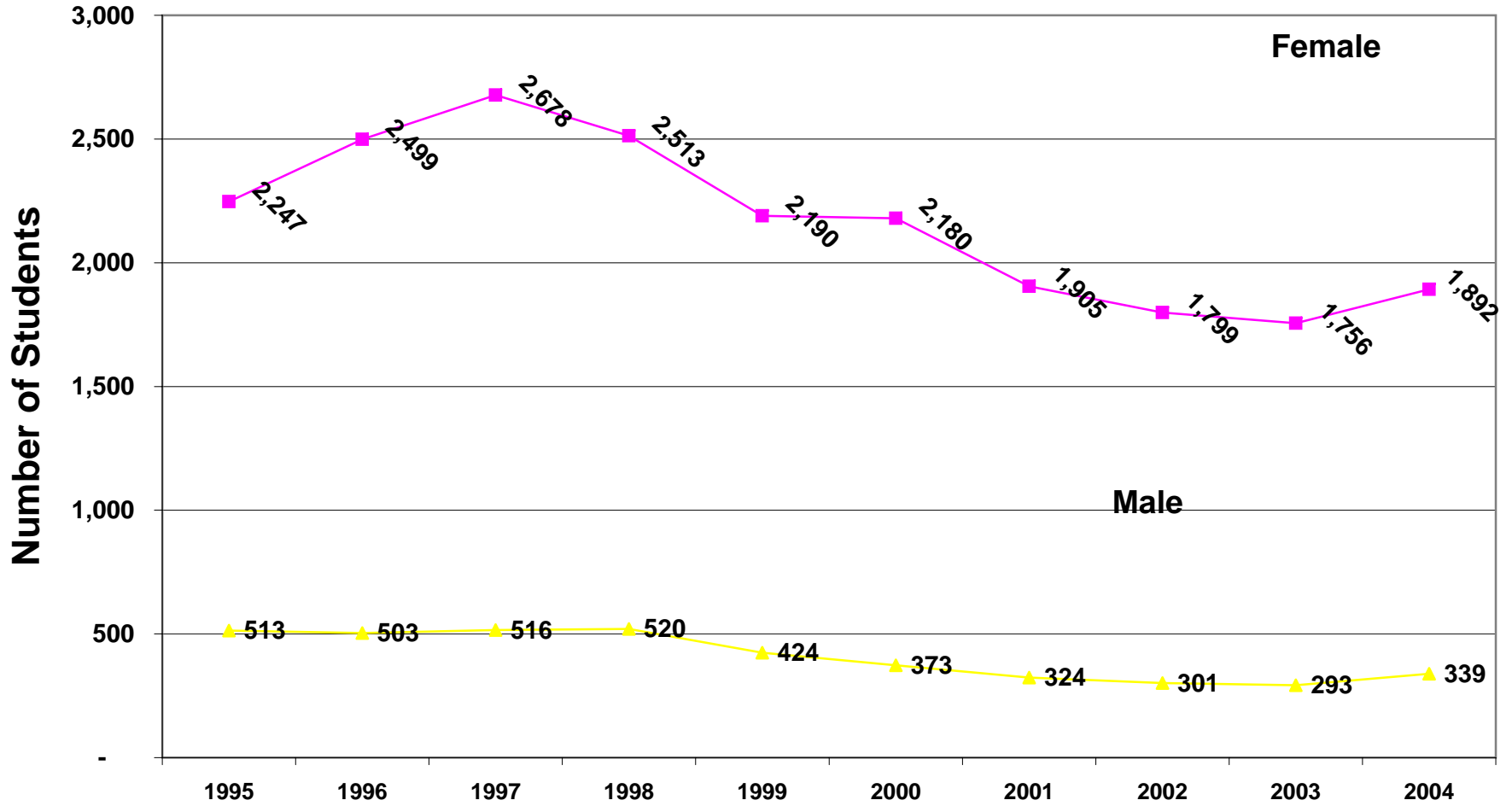


Table 7: Unduplicated Enrollment by Gender - - FALL 1995 to FALL 2004

Fall	Total	% Change		No. Female	% Female	No. Male	% Male
		Year Ago					
1995	2,760			2,247	81.41%	513	18.59%
1996	3,002	8.77%		2,499	83.24%	503	16.76%
1997	3,194	6.40%		2,678	83.84%	516	16.16%
1998	3,033	-5.04%		2,513	82.86%	520	17.14%
1999	2,614	-13.81%		2,190	83.78%	424	16.22%
2000	2,553	-2.33%		2,180	85.39%	373	14.61%
2001	2,229	-12.69%		1,905	85.46%	324	14.54%
2002	2,100	-5.79%		1,799	85.67%	301	14.33%
2003	2,049	-2.43%		1,756	85.70%	293	14.30%
2004	2,231	8.88%		1,892	84.81%	339	15.19%

Unduplicated Enrollment by Gender Fall terms



**TABLE 8: Unduplicated Enrollment by Ethnicity
Fall 1995-2004**

Fall	White		African American		American Indian		Asian		Hispanic		Not Ident.		Total	
	#	%	#	%	#	%	#	%	#	%	#	%	#	%
1995	2,055	74.5%	647	23.4%	8	0.3%	18	0.7%	8	0.3%	24	0.9%	2,760	100%
1996	2,157	71.9%	773	25.7%	8	0.3%	15	0.5%	10	0.3%	39	1.3%	3,002	100%
1997	2,235	70.0%	872	27.3%	6	0.2%	15	0.5%	14	0.4%	52	1.6%	3,194	100%
1998	2,124	70.0%	816	26.9%	7	0.2%	8	0.3%	18	0.6%	60	2.0%	3,033	100%
1999	1,825	69.8%	698	26.7%	3	0.1%	11	0.4%	17	0.7%	60	2.3%	2,614	100%
2000	1,789	70.1%	683	26.8%	5	0.2%	9	0.4%	13	0.5%	54	2.1%	2,553	100%
2001	1,531	68.7%	621	27.9%	9	0.4%	17	0.8%	15	0.7%	36	1.6%	2,229	100%
2002	1,430	68.1%	589	28.0%	8	0.4%	14	0.7%	17	0.8%	42	2.0%	2,100	100%
2003	1,356	66.2%	617	30.1%	7	0.3%	24	1.2%	13	0.6%	32	1.6%	2,049	100%
2004	1434	64.3%	710	31.8%	11	0.5%	28	1.3%	15	0.7%	33	1.5%	2,231	100%

Unduplicated Enrollment by Ethnicity Fall Terms

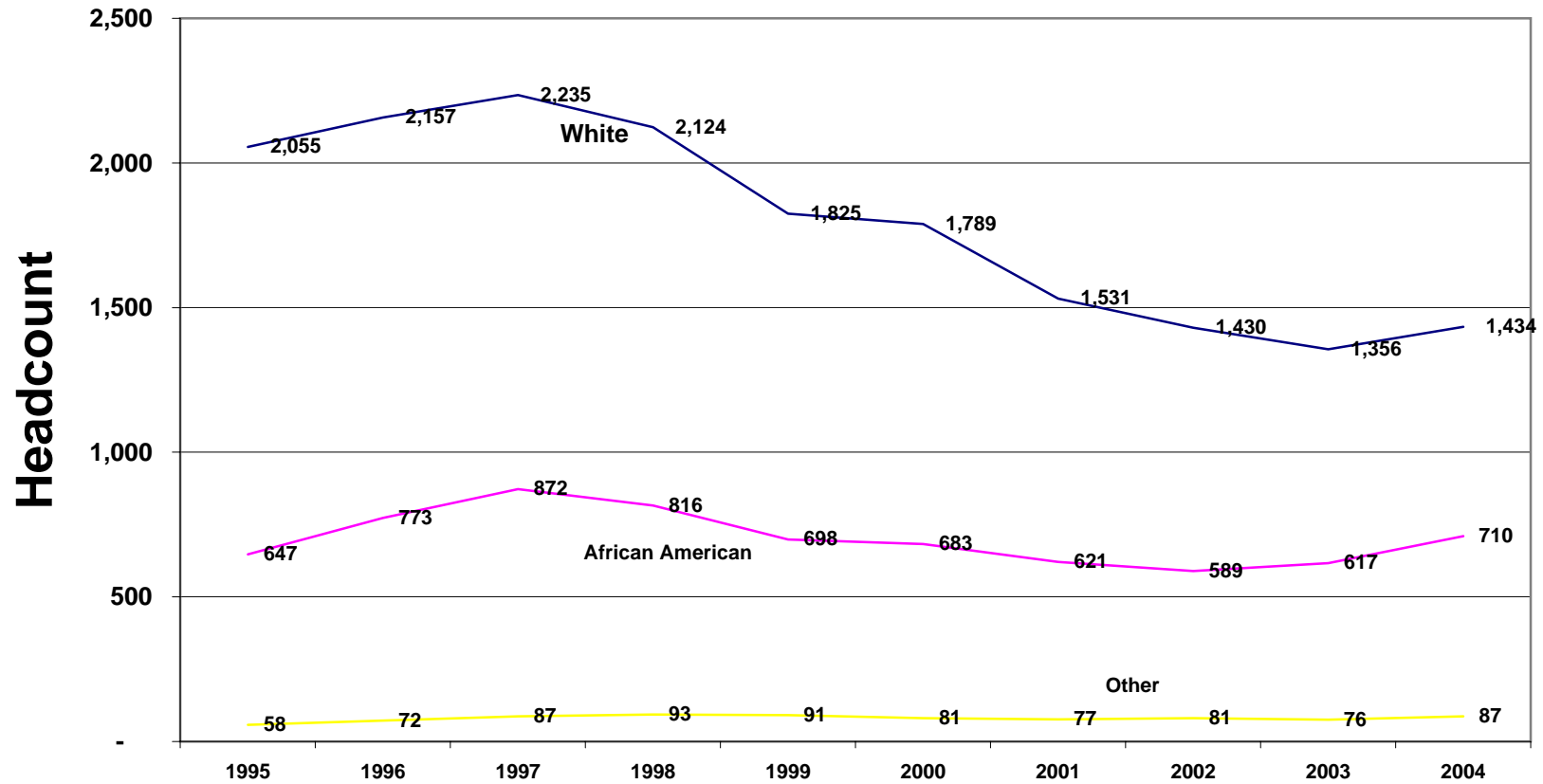


Table 9
Class Type Enrollment

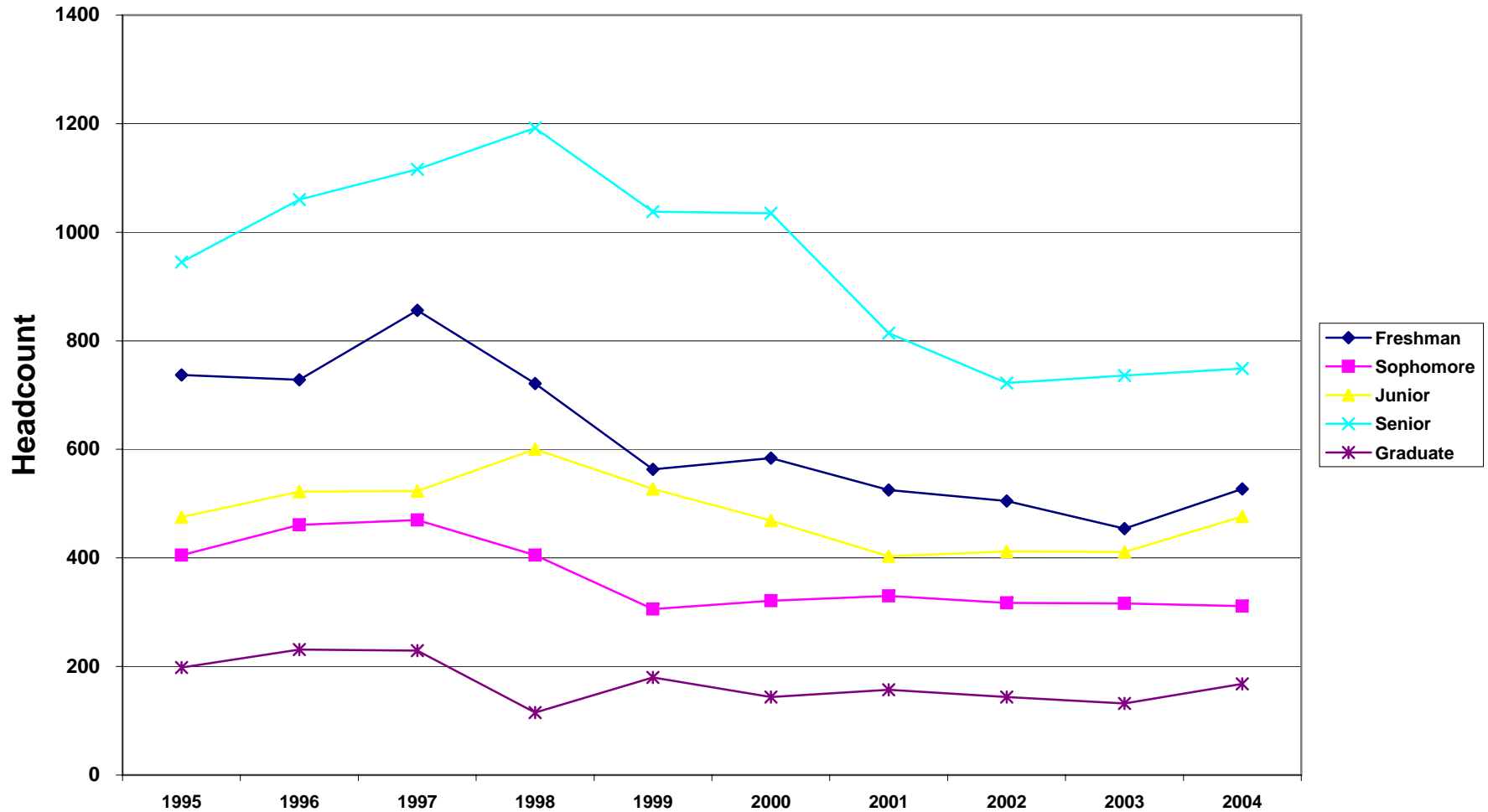
	Fall 2001	Fall 2002	Fall 2003	Fall 2004
Day Classes	2040	1848	1821	1962
Night Classes	1040	1119	950	1055
Weekend Classes	73	70	99	113
On-line Classes	66	57	160	223

***Students may be enrolled in more than one class type,
but headcount is unduplicated within class type.**

**TABLE 10: Unduplicated Enrollment by Student Classification
FALL TERMS**

Fall	Freshman	Sophomore	Junior	Senior	Graduate	Total
1995	737	405	475	945	198	2,760
1996	728	461	522	1060	231	3,002
1997	856	470	523	1116	229	3,194
1998	721	405	600	1192	115	3,033
1999	563	306	527	1038	180	2,614
2000	584	321	469	1035	144	2,553
2001	525	330	403	814	157	2,229
2002	505	317	412	722	144	2,100
2003	454	316	411	736	132	2,049
2004	527	311	476	749	168	2231

Unduplicated Enrollment by Student Classification Fall Terms



**Table 11: Non-traditional Students Vs. Traditional Students
Unduplicated Headcount - Fall Terms**

	Non-traditional						Traditional						Both Trad. & Non-trad.
	FT		PT		Total		FT		PT		Total		Total
	HC	%	HC	%	HC	%	HC	%	HC	%	HC	%	
Fall 1995	395	14.31%	802	29.06%	1197	43.37%	1342	48.62%	221	8.01%	1563	56.63%	2760
Fall 1996	410	13.66%	991	33.01%	1401	46.67%	1431	47.67%	170	5.66%	1601	53.33%	3002
Fall 1997	454	14.21%	1105	34.60%	1559	48.81%	1418	44.40%	217	6.79%	1635	51.19%	3194
Fall 1998	418	13.78%	977	32.21%	1395	45.99%	1337	44.08%	301	9.92%	1638	54.01%	3033
Fall 1999	401	15.34%	713	27.28%	1114	42.62%	1284	49.12%	216	8.26%	1500	57.38%	2614
Fall 2000	404	15.82%	711	27.85%	1115	43.67%	1213	47.51%	225	8.81%	1438	56.33%	2553
Fall 2001	394	17.68%	584	26.20%	978	43.88%	1160	52.04%	91	4.08%	1251	56.12%	2229
Fall 2002	372	17.71%	368	17.52%	740	35.24%	1183	56.33%	177	8.43%	1360	64.76%	2100
Fall 2003	405	19.77%	321	15.67%	726	35.43%	1178	57.49%	145	7.08%	1323	64.57%	2049
Fall 2004	470	21.07%	381	17.08%	851	38.14%	1210	54.24%	170	7.62%	1380	61.86%	2231

*Non-traditional Students are defined as those who are at least 25 years of age.

**HC = Headcount

*** Part-time is defined as UG enrolled 11 Cr. hrs or less or GR enrolled 8 Cr. Hrs or less

****Full-time is defined as UG enrolled 12 Cr. Hrs or more or GR enrolled 9 Cr. Hrs or more.

Non-traditional Vs. Traditional Students Unduplicated Headcount - Fall Terms

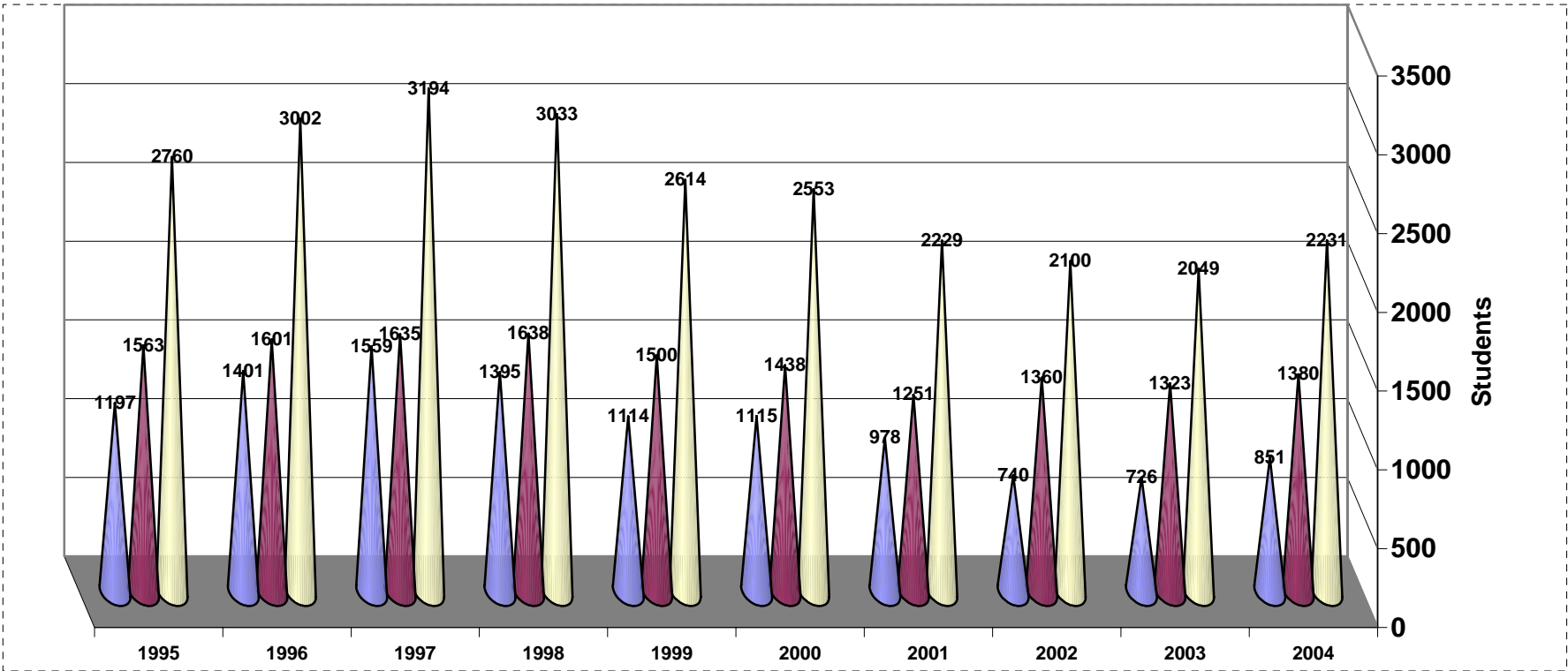
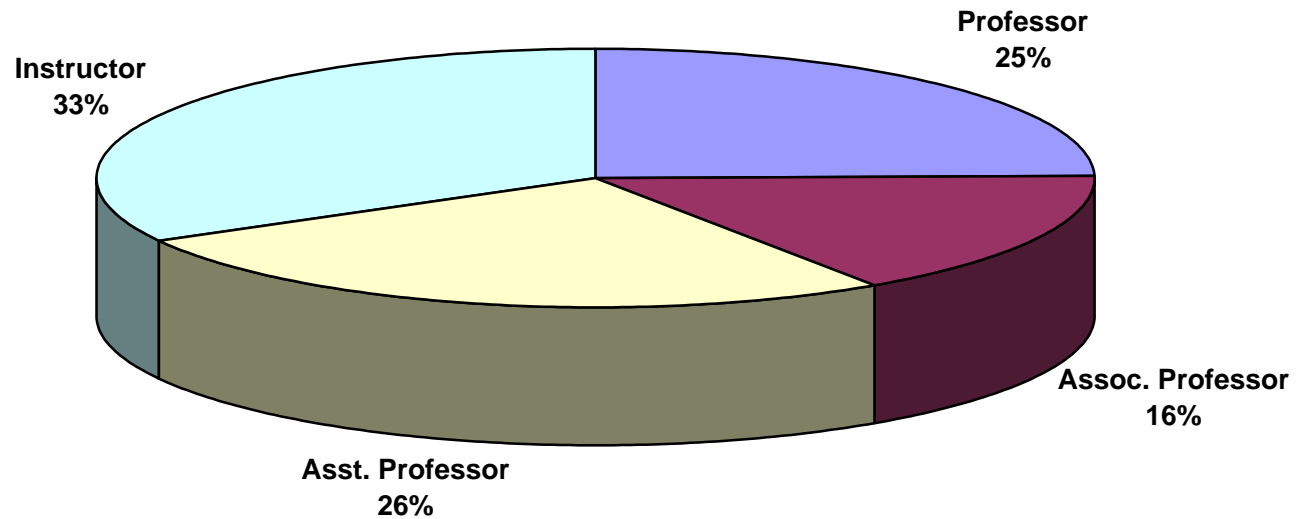


TABLE 12: Faculty Profile

Fall Sem.	Number				Full-time Faculty by Rank				Full-time Faculty by Degree				F-T Fac by Sex		F-T Fac by Race			F-T Fac Contract	
	Ft-Time	Admin.	Pt-Time	Total	Prof.	Asso.	Asst.	Inst.	DOCT.	SPEC.	MSTR.	BACH.	Male	Female	Black	White	Other	ACAD	FISCAL
1990	97	6	42	145	41	6	34	16	57	0	39	1	36	61	3	93	1	80	17
1991	104	6	45	155	43	4	35	22	57	0	42	5	38	66	3	101	0	85	19
1992	110	5	47	162	36	7	38	29	57	1	52	0	42	68	2	105	3	87	23
1993	112	5	52	169	33	5	45	29	62	2	48	0	42	70	3	108	1	88	24
1994	116	5	56	177	33	9	46	28	64	1	50	1	43	73	4	108	4	91	25
1995	120	5	63	188	31	11	53	25	73	1	45	1	49	71	6	111	3	95	25
1996	121	4	68	193	27	15	54	25	71	2	46	2	51	70	5	113	3	100	21
1997	128	4	69	201	27	18	61	22	81	2	44	1	50	78	3	120	5	105	23
1998	129	4	77	210	26	21	58	24	88	0	40	1	47	82	1	123	5	104	25
1999	132	4	80	216	28	22	55	27	92	0	40	0	52	80	2	128	2	105	27
2000	139	4	81	224	31	29	53	26	99	0	40	0	54	85	3	132	4	117	22
2001	134	4	80	218	31	27	44	32	93	0	40	1	53	81	6	123	5	103	31
2002	129	4	79	212	32	28	40	29	89	0	40	0	49	80	7	118	4	99	30
2003	131	5	61	197	33	23	36	39	85	0	46	0	48	83	5	123	3	104	27
2004	133	5	46	184	33	21	35	44	80	0	53	0	50	83	4	125	4	106	27

SOURCE: Office of Academic Affairs

Full-time Faculty Profile - Fall 2004



Total number of full-time faculty = 133

Table 13: Unduplicated Headcount Enrollment by Credit Hours and Student Classification

Cr. Hrs	Fall 2004									Fall 2003									Fall 2002								
	FR	SO	JR	SR	GR	Total	%	Cum%	FR	SO	JR	SR	GR	Total	%	Cum%	FR	SO	JR	SR	GR	Total	%	Cum%			
1	3	0	1	19	0	23	1.0%	1.0%	5	1	0	11	9	26	1.3%	1.3%	16	0	0	24	0	40	1.9%	1.9%			
2	2	0	0	5	0	7	0.3%	1.3%	2	0	0	2	0	4	0.2%	1.5%	4	0	2	2	8	16	0.8%	2.7%			
3	85	7	10	49	43	194	8.7%	10.0%	56	7	0	44	29	136	6.6%	8.1%	76	5	8	38	25	152	7.2%	9.9%			
4	7	3	4	4	4	22	1.0%	11.0%	4	2	4	7	0	17	0.8%	8.9%	6	7	1	8	0	22	1.0%	11.0%			
5	4	0	1	2	0	7	0.3%	11.3%	2		1	4	0	7	0.3%	9.3%	0	0	1	1	0	2	0.1%	11.0%			
6	18	7	25	63	49	162	7.3%	18.6%	55	10	18	44	37	164	8.0%	17.3%	54	14	23	48	50	189	9.0%	20.0%			
7	7	3	5	13	0	28	1.3%	19.9%	4	2	2	14	1	23	1.1%	18.4%	4	1	0	7	0	12	0.6%	20.6%			
8	1	1	1	3	1	7	0.3%	20.2%	1	1	1	4	0	7	0.3%	18.7%	1	3	2	3	0	9	0.4%	21.0%			
9	3	8	13	24	12	60	2.7%	22.9%	5	8	12	22	12	59	2.9%	21.6%	6	11	21	38	19	95	4.5%	25.6%			
10	7	7	8	19	6	47	2.1%	25.0%	4	0	7	12	0	23	1.1%	22.7%	2	4	2	6	1	15	0.7%	26.3%			
11	2	4	4	2	0	12	0.5%	25.5%	2	2	1	6	0	11	0.5%	23.3%	2	1	3	5	14	25	1.2%	27.5%			
12	51	52	92	120	18	333	14.9%	40.4%	37	51	58	124	11	281	13.7%	37.0%	29	38	67	103	8	245	11.7%	39.1%			
13	46	29	32	52	28	187	8.4%	48.8%	25	26	42	42	31	166	8.1%	45.1%	20	25	26	32	19	122	5.8%	45.0%			
14	36	22	17	16	2	93	4.2%	53.0%	30	11	18	12	0	71	3.5%	48.6%	19	6	7	16	0	48	2.3%	47.2%			
15	73	65	130	162	1	431	19.3%	72.3%	85	70	122	150	1	428	20.9%	69.4%	102	79	109	216	0	506	24.1%	71.3%			
16	85	50	50	81	0	266	11.9%	84.2%	67	47	44	98	1	257	12.5%	82.0%	58	49	48	58	0	213	10.1%	81.5%			
17	55	25	19	22	4	125	5.6%	89.8%	50	30	19	19	0	118	5.8%	87.8%	73	29	23	27	0	152	7.2%	88.7%			
18	26	18	45	48	0	137	6.1%	96.0%	20	25	39	62	0	146	7.1%	94.9%	26	21	43	59	0	149	7.1%	95.8%			
19	15	9	16	31	0	71	3.2%	99.1%	0	20	14	46	0	80	3.9%	98.8%	7	22	17	15	0	61	2.9%	98.7%			
20	1	0	1	3	0	5	0.2%	99.4%	0	3	7	4	0	14	0.7%	99.5%	0	2	6	6	0	14	0.7%	99.4%			
21	0	1	2	10	0	13	0.6%	100.0%	0	0	2	3	0	5	0.2%	99.7%	0	0	2	5	0	7	0.3%	99.7%			
22	0	0	0	1	0	1	0.0%	100.0%	0	0	0	6	0	6	0.3%	100.0%	0	0	0	1	0	1	0.0%	99.8%			
23	0	0	0	0	0	0	0.0%	100.0%	0	0	0	0	0	0	0.0%	100.0%	0	0	1	2	0	3	0.1%	99.9%			
24	0	0	0	0	0	0	0.0%	100.0%	0	0	0	0	0	0	0.0%	100.0%	0	0	0	0	0	0	0.0%	99.9%			
25	0	0	0	0	0	0	0.0%	100.0%	0	0	0	0	0	0	0.0%	100.0%	0	0	0	0	0	0	0.0%	99.9%			
Other	0	0	0	0	0	0	0.0%	100.0%	0	0	0	0	0	0	0.0%	100.0%	0	0	0	2	0	2	0.1%	100.0%			
Total	527	311	476	749	168	2231	100.0%		454	316	411	736	132	2049	100.0%		505	317	412	722	144	2100	100.0%	100.0%			

**Table 14: Age Distribution by Student Classification
Unduplicated Headcount**

Age Group	Freshman		Sophomore		Junior		Senior		Graduate		Total	
	FA 2004	FA 2003	FA 2004	FA 2003	FA 2004	FA 2003	FA 2004	FA 2003	FA 2004	FA 2003	FA 2004	FA 2003
Under 18	58	64	1	0	0	0	0	0	0	0	59	64
18 and 19	290	242	55	84	5	2	0	0	0	0	350	328
20 and 21	64	51	132	121	203	191	103	114	1	1	503	478
22 to 24	28	24	44	32	94	92	278	281	24	24	468	453
25 to 29	30	19	28	36	71	50	144	134	39	30	312	269
30 to 34	13	23	31	21	46	28	71	65	27	15	188	152
35 to 39	9	6	7	12	22	21	54	50	26	18	118	107
40 to 49	23	19	10	7	26	20	65	61	39	31	163	138
50 to 64	8	3	3	3	9	7	32	30	12	13	64	56
65 and Over	4	3	0	0	0	0	2	1	0	0	6	4
Unknown	0	0	0	0	0	0	0	0	0	0	0	0
Total	527	454	311	316	476	411	749	736	168	132	2,231	2,049

	Fall 2004	Fall 2003
Average Age	26.06	26.7
Average Age Men	25.37	25.05
Average Age Women	26.19	25.83

Table 15: Credit Hour Generation by Division

Program	Su 02	Fall 02	Spring 03	02-03 Total	Su 03	Fall 03	Spring 04	03-04 Total	Su 04	Fall 04	Spring 05	04-05 Total
Business & Communication	666	3,354	3,314	7,334	450	3,485	3,025	6,960	628	3,191	3,217	7,036
Education & Human Sci.	1,101	5,784	5,404	12,289	1,285	5,494	5,105	11,884	1,369	6,012	5,963	13,344
Fine & Performing Arts	247	2,098	2,217	4,562	140	2,018	2,201	4,359	222	2,053	2,058	4,333
Health & Kinesiology	313	1,066	1,147	2,526	292	1,204	1,376	2,872	439	1,387	1,386	3,212
Humanities	1,382	5,221	4,795	11,398	1,796	5,173	5,269	12,238	1,948	5,467	5,566	12,981
Interdisciplinary Studies	231	642	708	1,581	72	585	702	1,359	151	728	709	1,588
Nursing	1,115	3,410	3,291	7,816	1,144	3,705	3,399	8,248	1,339	3,874	3,422	8,635
Science & Mathematics	904	3,690	4,125	8,719	818	3,628	3,938	8,384	842	4,174	4,178	9,194
Totals	5,959	25,265	25,001	56,225	5,997	25,292	25,015	56,304	6,938	26,886	26,499	60,323

****Numbers are as of end of the semester**

CREDIT HOUR GENERATION BY DIVISION - Fall 2004

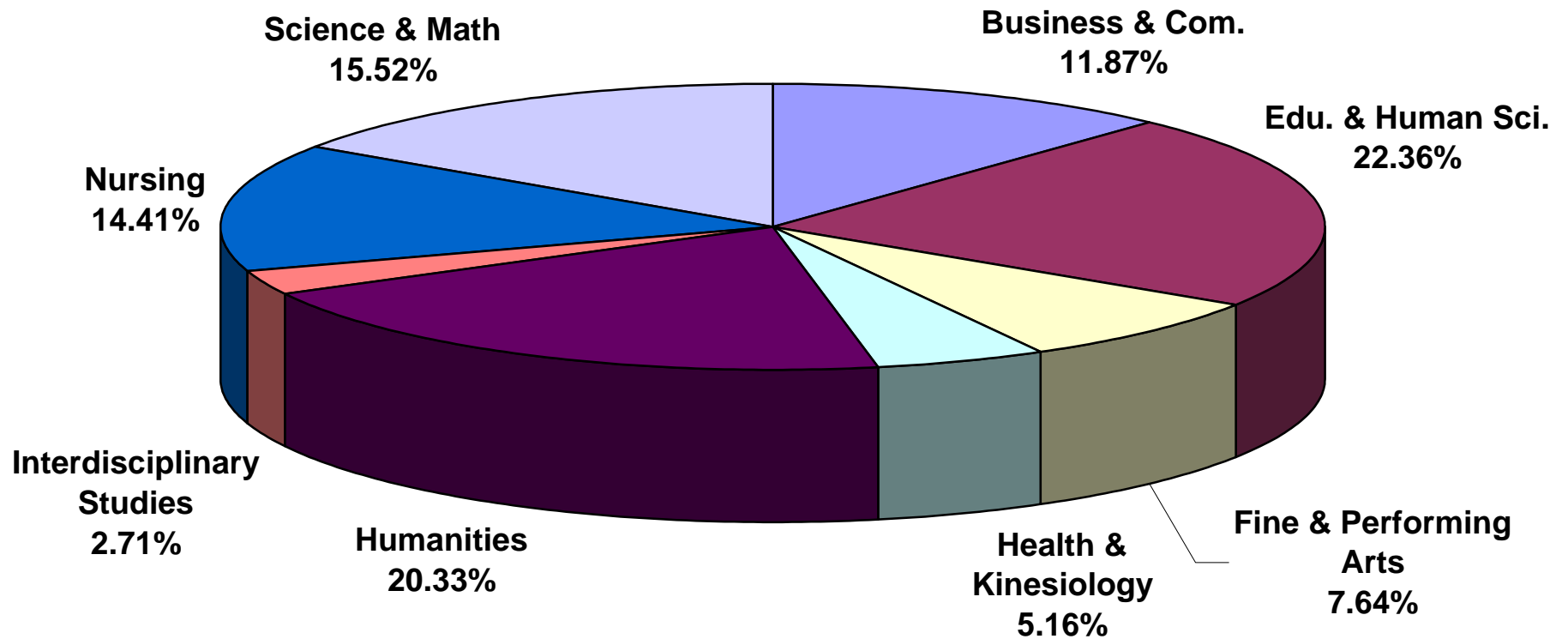


Table 16
Enrollment by Major and Program Type
Unduplicated Count of Registered Students - Fall 2000-2004

	Fall 04	Fall 03	Fall 02	Fall 01	FALL 00	5 Year	5 Year
	Total	Total	Total	Total	Total	# Change	% Change
Business & Communications	293	278	325	346	378	-85	-22.49%
Accounting	71	59	69	71	82	-11	-13.41%
Business Administration - IRM	1	3	3	0		1	NA
Business Administration - MIS	45	55	61	67	77	-32	-41.56%
Business Adm.- General Bus.	42	32	50	51	51	-9	-17.65%
Business Administration - Mgt.	35	30	34	39	38	-3	-7.89%
Business Administration - Mkt.	25	34	28	31	31	-6	-19.35%
Business Adm. - Off.Adm.	1	2	4	14	11	-10	-90.91%
Journalism	0	1	2	2	5	-5	-100.00%
Broadcasting	0	3	4	11	7	-7	NA
Broadcast Journalism	0	0	0	1	3	-3	-100.00%
Communication	72	42	16	0		72	NA
Communication - Public Rel.	0	6	31	37	32	-32	-100.00%
Communication - Journalism	0	2	6	8	13	-13	-100.00%
Communication - Broadcasting	1	8	16	10	22	-21	-95.45%
Fashion Merchandising	0	1	1	4	6	-6	-100.00%
Other/Unknown	0	0	0	0		0	NA
Education & Human Sciences	524	507	543	569	601	-77	-12.81%
Clothing/Textiles/Merchandising	0	0	0	0	2	-2	-100.00%
Elementary Education	248	246	261	268	277	-29	-10.47%
Special Education	0	0	0	0		0	NA
FHD/Family Studies	77	74	68	71	78	-1	-1.28%
FHD/Family Stu. - Teaching Cert.	4	8	6	3	14	-10	-71.43%
Gifted Education - Master's	7	8	17	21	21	-14	-66.67%
Psychology	75	76	79	87	98	-23	-23.47%
Speech Pathology	61	55	60	61	68	-7	-10.29%
Alternate Route	0	0	0	1	6	-6	-100.00%
Instructional Management	9	11	13	26	30	-21	-70.00%
Master of Arts in Teaching Program	15	16	28	22	7	8	114.29%
Reading/Literacy - Master's Program	27	13	11	9		27	NA
Education Add-On	0	0	0	0		0	#DIV/0!
Differentiated Instruction	1			0		1	NA
Other/Unknown	0	0	0	0		0	NA
Fine and Performing Arts	122	126	121	110	123	-1	-0.81%
Art Teacher Education	19	17	16	10	13	6	46.15%
Fine Art	4	12	15	12	14	-10	-71.43%
Fine Art - 3D Design	0	0	0	4	2	-2	-100.00%
Fine Art - Graphic Design	19	17	22	27	28	-9	-32.14%
Fine Art - Interior Design	29	34	28	31	29	0	0.00%
Fine Art - Printmaking/Studio Art	16	11	8	1	1	15	1500.00%
Fine Art - Drawing & Painting	0	0	3	3	4	-4	-100.00%
Fine Art - Theater	8	4	4	3	8	0	0.00%
Music	3	5	6	5	8	-5	-62.50%
Music - Commercial	3	4	3	3	10	-7	-70.00%
Music Education	8	11	9	11	6	2	33.33%
Music Therapy	10	11	5	0		10	NA
Other/Unknown	3	0	2	0		3	NA

Health & Kinesiology	101	55	71	71	80	21	26.25%
H&K - Teaching	5	7	12	18		5	NA
H&K - Recreation/Fitness Mgt.	0	0	2	6	4	-4	-100.00%
H&K - Exercise Science	47	25	28	23	19	28	147.37%
Kinesiology	0	0	0	0	24	-24	-100.00%
H&K - Athletic Training	0	0	1	3	4	-4	-100.00%
H&K - Sport Management	6	3	6	1		6	NA
Pre - PT	0	4	11	10	18	-18	-100.00%
Pre - OT	3	4	3	2		3	#DIV/0!
Health Education Master's Program	40	12	8	8	11	29	263.64%
Other/Unknown	0	0	0	0		0	NA

Humanities	183	162	158	162	149	34	22.82%
English/Eng. Ed	56	53	62	54	49	7	14.29%
History/History Ed.	24	28	21	22	19	5	26.32%
Paralegal	53	47	43	49	47	6	12.77%
Political Science	16	17	15	10	6	10	166.67%
Social Science/Soc. Sci. Ed.	29	15	14	20	21	8	38.10%
Spanish	5	2	3	7	7	-2	-28.57%
Spanish/Secondary Education	0	0	0	0		0	#DIV/0!
Other/Unknown	0	0	0	0		0	NA

Nursing	489	420	419	360	346	143	41.33%
ASN	191	175	145	128	93	98	105.38%
BSN	259	210	233	197	222	37	16.67%
MSN	39	35	41	35	31	8	25.81%
Post MSN	0	0	0			0	NA

Science & Mathematics	129	101	113	134	146	-17	-11.64%
Biology/Biology Ed.	72	52	53	59	63	9	14.29%
Chemistry/Chemistry Ed.	10	14	12	17	14	-4	-28.57%
Mathematics/ Math Ed.	32	21	26	23	28	4	14.29%
Microbiology	13	11	15	26	33	-20	-60.61%
Physical Science/Phy. Sci. Ed.	2	3	7	9	8	-6	-75.00%
Other/Unknown	0	0	0			0	NA

Interdisciplinary Studies	75	64	59	50	59	16	27.12%
Culinary Arts	75	64	59	50	59	16	27.12%

Undeclared	315	336	291	427	671	-356	-53.06%
-------------------	------------	------------	------------	------------	------------	-------------	----------------

Total	2231	2049	2100	2229	2553	-322	-12.61%
--------------	-------------	-------------	-------------	-------------	-------------	-------------	----------------

Table 17: Unduplicated Headcount Enrollment by Division

Fall 2002 - Fall 2004

Division	Fall 2002		Fall 2003		Fall 2004	
	# Students	% of Total	# Students	% of Total	# Students	% of Total
Business & Communication	325	15.48%	278	13.57%	293	13.13%
Education & Human Sciences	543	25.86%	507	24.74%	524	23.49%
Fine & Performing Arts	119	5.67%	126	6.15%	122	5.47%
Health & Kinesiology	71	3.38%	55	2.68%	101	4.53%
Humanities	158	7.52%	162	7.91%	183	8.20%
Interdisciplinary Studies	59	2.81%	64	3.12%	75	3.36%
Nursing	418	19.90%	420	20.50%	489	21.92%
Science & Mathematics	114	5.43%	101	4.93%	129	5.78%
Undeclared	293	13.95%	336	16.40%	315	14.12%
Total	2100	100%	2049	100%	2231	100%

Note: Headcount Enrollment Numbers are Unduplicated

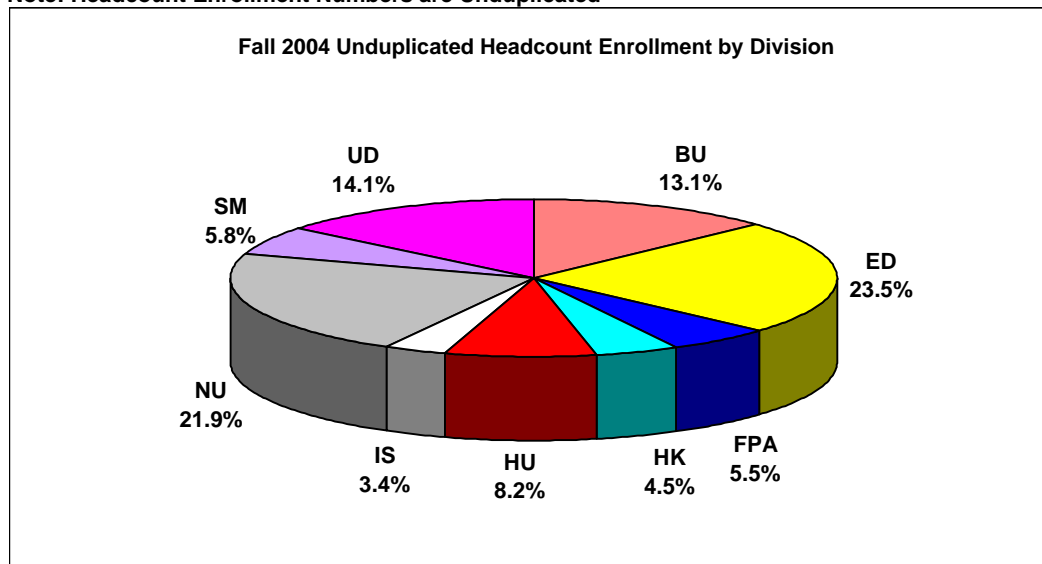


Table 18: Faculty Profile and Student Credit Hour Production

	Fall 2004	Fall 2003
Terminal Degrees	92	101
Non-Terminal Degrees	87	79
TOTAL	179	180

Fall 2004 Terminal Degrees and Student Credit Hours				
	Lower CH	Upper CH	Graduate CH	Total CH
Terminal Degrees	8,413	6,460	953	15,826
Non-Terminal Degrees	6,746	4,011	303	11,060
TOTAL	15,159	10,471	1,256	26,886

Fall 2003 Terminal Degrees and Student Credit Hours				
	Lower CH	Upper CH	Graduate CH	Total CH
Terminal Degrees	8,664	6,786	767	16,217
Non-Terminal Degrees	5,330	3,451	199	8,980
TOTAL	13,994	10,237	966	25,197

Fall 2004 Full-time/Part-time Status and Student Credit Hours				
	Lower CH	Upper CH	Graduate CH	Total CH
Full-time Faculty	11,878	8,795	1,189	21,862
Part-time Faculty	3,281	1,676	67	5,024
TOTAL	15,159	10,471	1,256	26,886

Fall 2003 Full-time/Part-time Status and Student Credit Hours				
	Lower CH	Upper CH	Graduate CH	Total CH
Full-time Faculty	12,350	8,997	805	22,152
Part-time Faculty	1,644	1,240	161	3,045
TOTAL	13,994	10,237	966	25,197

Note: For this profile, both Full-time and Part-time faculty are included.

**Table 19: Unduplicated Enrollment by State of Residence
Fall 2000-2004**

State	2000	2001	2002	2003	2004
Alabama	135	143	157	122	127
Alaska	0	0	0	0	0
Arizona	1	2	0	0	0
Arkansas	4	4	3	3	5
California	1	0	0	1	1
Colorado	1	3	3	1	0
Connecticut	0	0	0	0	0
Florida	8	5	7	4	4
Georgia	6	8	3	5	4
Idaho	1	0	0	0	0
Illinois	3	1	0	0	2
Indiana	3	0	0	1	1
Iowa	1	0	0	0	0
Kansas	0	3	0	0	1
Kentucky	0	0	1	3	4
Louisiana	21	11	10	6	11
Maryland	0	1	0	0	0
Massachusetts	0	0	0	0	0
Michigan	0	0	1	1	0
Minnesota	0	1	0	0	0
Mississippi	2256	2000	1817	1830	1998
Missouri	5	4	3	3	3
Montana	0	0	0	0	0
New Hampshire	0	0	0	0	1
New Jersey	0	1	0	0	0
New Mexico	1	2	2	1	1
New York	1	0	0	1	0
North Carolina	0	1	1	1	1
Ohio	0	3	0	0	3
Oklahoma	1	0	1	0	1
Oregon	1	0	0	0	0
Pennsylvania	1	1	0	0	0
South Carolina	1	0	0	0	0
South Dakota	0	0	0	0	0
Tennessee	30	28	36	29	19
Texas	8	12	8	4	7
Utah	0	0	0	0	0
Vermont	1	0	0	0	0
Virginia	5	3	2	1	3
Washington	1	1	0	2	1
Wisconsin	0	1	1	0	2
Wyoming	0	0	0	0	0
Washington D.C.	0	0	0	0	0
U.S. Citizen Living Outside U.S.		1	0	0	0
Total U.S. OOS	241	239	239	189	202
Other/Foreign*	56	73	44	30	31
In-state Enrollment	2256	2000	1817	1830	1998
Total Enrollment	2553	2313	2100	2049	2231
# States Other Than MS Represented	24	22	16	18	21

*High Point Enrollment Dates are used for Fall 2000, 2002, 2003, and 2004.

**The End of the Semester file is used for Fall 2001 due to coding errors in the Fall 2001 High Point file.

**Table 19A: Unduplicated Enrollment by State of Residence &
Student Classification
Fall 2004**

State	Freshman	Sophomore	Junior	Senior	Graduate	Total
Alabama	28	16	35	40	8	127
Alaska	0	0	0	0	0	0
Arizona	0	0	0	0	0	0
Arkansas	1	1	2	1	0	5
California	1	0	0	0	0	1
Colorado	0	0	0	0	0	0
Connecticut	0	0	0	0	0	0
Florida	1	0	1	2	0	4
Georgia	1	0	1	2	0	4
Idaho	0	0	0	0	0	0
Illinois	1	0	0	1	0	2
Indiana	0	0	0	1	0	1
Iowa	0	0	0	0	0	0
Kansas	1	0	0	0	0	1
Kentucky	1	0	1	2	0	4
Louisiana	2	3	1	0	5	11
Maryland	0	0	0	0	0	0
Massachusetts	0	0	0	0	0	0
Michigan	0	0	0	0	0	0
Minnesota	0	0	0	0	0	0
Mississippi	461	274	437	676	150	1998
Missouri	2	0	0	1	0	3
Montana	0	0	0	0	0	0
New Hampshire	1	0	0	0	0	1
New Jersey	0	0	0	0	0	0
New Mexico	0	0	1	0	0	1
New York	0	0	0	0	0	0
North Carolina	0	0	0	1	0	1
Ohio	3	0	0	0	0	3
Oklahoma	0	0	1	0	0	1
Oregon	0	0	0	0	0	0
Pennsylvania	0	0	0	0	0	0
South Carolina	0	0	0	0	0	0
South Dakota	0	0	0	0	0	0
Tennessee	5	2	2	5	5	19
Texas	1	2	4	0	0	7
Utah	0	0	0	0	0	0
Vermont	0	0	0	0	0	0
Virginia	0	0	1	2	0	3
Washington	0	0	0	1	0	1
Wisconsin	0	0	2	0	0	2
Wyoming	0	0	0	0	0	0
Washington D.C.	0	0	0	0	0	0
Total U.S. OOS	49	24	52	59	18	202

**Table 20: Unduplicated Headcount Enrollment by Country
Fall 2000-2004**

Country	2000	2001	2002	2003	2004	2004 vs. 2003
Albania	1	0	0	1	1	0
Australia	0	0	1	0	0	0
Bangladesh	1	0	0	0	0	0
Barbados	1	1	1	0	0	0
Belize	0	0	0	0	0	0
Bulgaria	3	2	2	1	1	0
Cameroon	0	0	1	0	0	0
Canada	1	2	0	0	0	0
China	4	2	0	1	1	0
Croatia	0	0	1	0	0	0
Ecuador	1	0	0	1	0	-1
England	0	0	1	0	0	0
Ethiopia	0	0	0	0	0	0
Finland	1	0	1	0	0	0
France	0	0	0	0	0	0
Gambia	0	0	1	0	0	0
Germany	2	2	2	0	1	1
Ghana	1	6	2	2	1	-1
Haiti	1	0	0	0	0	0
Honduras	1	4	2	1	1	0
Hong Kong	1	0	0	0	0	0
Hungary	0	0	0	0	0	0
India	0	0	1	0	0	0
Indonesia	1	2	2	0	0	0
Jamaica	0	0	0	0	1	1
Japan	2	2	1	0	1	1
Jordan	1	0	0	0	0	0
Kazakhstan	0	2	1	1	0	-1
Kenya	13	20	13	8	7	-1
Korea	0	0	0	0	0	0
Malaysia	2	2	1	0	0	0
Mexico	1	0	0	0	0	0

Moldova	0	0	1	0	0	0
Nepal	0	0	0	0	0	0
Netherlands	0	0	0	0	0	0
Niger	0	0	0	0	0	0
Nigeria	3	8	1	2	5	3
Norway	0	0	0	0	0	0
Pakistan	0	0	0	0	0	0
Peru	0	0	0	0	1	1
Puerto Rico	0	0	0	0	0	0
Romania	3	2	1	3	3	0
Russia	3	4	0	1	1	0
Saudi Arabia	1	2	0	0	0	0
Singapore	0	0	0	0	0	0
South Africa	1	0	0	0	0	0
Spain	0	0	0	0	0	0
Sweden	0	0	0	0	0	0
Switzerland	0	0	0	0	0	0
Taiwan	0	0	1	2	2	0
Thailand	1	0	0	0	0	0
Trinidad & Tobago	4	2	1	1	0	-1
Turkey	0	0	0	0	0	0
Uganda	0	2	0	0	0	0
Ukraine	1	2	2	2	2	0
United Kingdom	0	2	0	1	0	-1
Vietnam	0	0	2	1	2	1
Yugoslavia	0	0	0	0	0	0
Zambia	0	2	1	1	0	-1
Other/Overseas	0	0	0	0	0	0
Foreign Students	56	73	44	30	31	1
Countries Represented	27	21	25	17	16	-1

*High Point Enrollment Dates are used for Fall 1999, 2000, 2002,2003, and 2004.

**The End of the Semester file is used for Fall 2001 due to coding errors in the Fall 2001 High Point file.

**Table 21: Unduplicated Enrollment by MS County
Fall 2000-2004**

County	2000	2001	2002	2003	2004
Adams	3	3	6	6	2
Alcorn	13	12	10	6	7
Amite	0	1	1	4	3
Attala	9	9	13	16	15
Benton	1	3	1	1	2
Bolivar	12	8	9	7	7
Calhoun	8	4	5	4	3
Carroll	4	5	2	2	3
Chickasaw	24	31	34	31	38
Choctaw	13	12	16	12	13
Claiborne	5	4	4	1	1
Clarke	0	3	4	3	4
Clay	142	127	108	114	123
Coahoma	5	2	5	3	1
Copiah	2	2	2	3	2
Covington	1	1	1	2	2
DeSoto	19	14	16	14	27
Forrest	6	6	6	5	5
Franklin	2	2	1	0	0
George	5	2	5	2	1
Greene	1	0	0	0	2
Grenada	1	1	5	7	8
Hancock	4	8	5	6	6
Harrison	16	13	18	24	30
Hinds	42	48	37	40	48
Holmes	6	4	4	10	8
Humphreys	0	1	2	1	1
Issaquena	0	0	0	0	1
Itawamba	27	24	25	20	11
Jackson	20	17	28	27	39
Jasper	4	2	1	3	5
Jefferson	0	1	1	0	1
Jefferson Davis	1	1	1	2	2
Jones	3	4	4	6	4
Kemper	9	6	3	4	6
Lafayette	16	9	6	7	5
Lamar	3	4	6	2	9
Lauderdale	12	11	5	9	11
Lawrence	0	1	0	0	0
Leake	57	8	2	2	3
Lee	74	57	63	53	64
Leflore	6	3	2	4	8

**Table 21: Unduplicated Enrollment by MS County
Fall 2000-2004**

County	2000	2001	2002	2003	2004
Lincoln	5	1	1	4	3
Lowndes	1099	996	781	813	845
Madison	22	16	11	17	22
Marion	2	0	1	0	0
Marshall	3	7	7	5	5
Monroe	153	132	146	147	163
Montgomery	6	13	4	7	4
Neshoba	12	8	14	14	18
Newton	6	3	6	7	7
Noxubee	50	51	58	57	57
Oktibbeha	120	133	121	119	124
Panola	1	1	3	3	7
Pearl River	11	7	12	8	9
Perry	2	1	1	0	1
Pike	4	5	5	3	4
Pontotoc	13	9	7	7	11
Prentiss	13	14	14	11	10
Quitman	3	1	0	2	2
Rankin	20	19	23	25	31
Scott	5	4	2	3	4
Sharkey	4	0	0	1	0
Simpson	2	0	0	0	1
Smith	1	1	3	5	2
Stone	1	1	3	1	1
Sunflower	3	4	5	5	9
Tallahatchie	3	5	5	4	3
Tate	5	6	6	6	4
Tippah	7	6	7	5	6
Tishomingo	6	3	8	5	4
Tunica	2	1	2	2	2
Union	6	6	6	4	7
Walthall	3	1	3	1	1
Warren	7	6	7	7	7
Washington	19	17	27	17	27
Wayne	6	5	11	4	3
Webster	12	13	12	13	23
Wilkinson	1	2	3	3	1
Winston	38	25	20	27	29
Yalobusha	2	2	2	2	1
Yazoo	2	1	3	3	9
Total MS Enrollment	2256	2000	1817	1830	1998
# Represented	76	77	76	74	78

*High Point Enrollment Dates are used for Fall 1999, 2000, 2002,2003, and 2004.

**The End of the Semester file is used for Fall 2001 due to coding errors in the Fall 2001 High Point file.

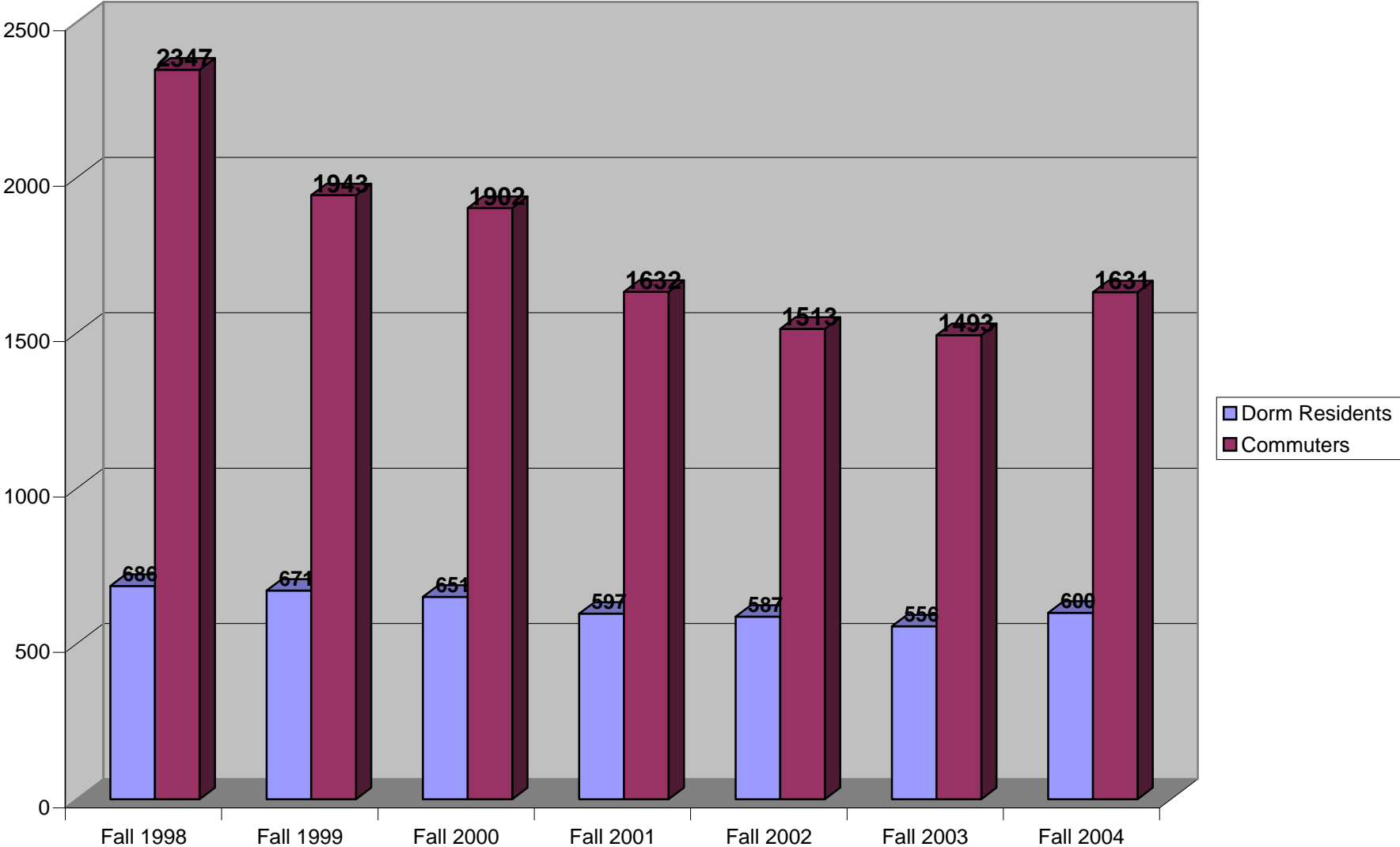
Table 22: Residence Hall Student Headcount

Residence Hall	Fall 98	Fall 99	Fall 00	Fall 01	Fall 02	Fall 03	Fall 04
Callaway	109	118	111	99	119	103	113
Columbus	0	0	0	0	50	47	58
Frazier	64	49	53	59	0	0	0
Goen	154	150	141	112	53	66	72
Grossnickle	38	37	38	35	40	39	43
Hastings-Simmons	42	42	45	49	49	49	54
Jones	146	138	130	128	133	129	116
Kincannon	133	137	133	115	143	123	144
Total	686	671	651	597	587	556	600

Fall 2004 Residence Hall Enrollment by Race

Residence Hall	White	African American	Other	Non-res. Alien	Totals
Callaway	64	44	3	2	113
Columbus	45	11	1	1	58
Goen	47	19	1	5	72
Grossnickle	29	13	1	0	43
Hastings-Simmons	38	12	2	2	54
Jones	84	22	5	5	116
Kincannon	57	82	1	4	144
Total	364	203	14	19	600

Dorm Residents Vs. Commuters



**Table 23: Degrees Granted by Major, Ethnicity, and Gender
Academic Year 2004**

Area	CIP	Division	White		African-American		American-Indian		Asian		Hispanic		Non-resident Alien		Totals	
			Men	Women	Men	Women	Men	Women	Men	Women	Men	Women	Men	Women	Men	Women
Communications, General	9.0101	BU	2	6	0	4	0	0	0	1	0	0	0	2	2	13
Business Administration & Mgt., Gen.	52.0201	BU	5	9	0	6	0	0	0	0	0	1	0	3	5	19
Accounting	52.0301	BU	1	10	3	3	0	0	0	0	1	0	0	0	5	13
Curriculum & Instruction	13.0301	ED	0	3	0	2	0	0	0	0	0	0	0	0	0	5
Educ.of the Gifted and Talented - Master's	13.1004	ED	0	8	0	0	0	0	0	0	0	0	0	0	0	8
Elementary Teacher Education	13.1202	ED	0	41	1	9	0	0	0	0	0	2	0	0	1	52
Secondary Teacher Education MAT	13.1205	ED	0	3	0	1	0	0	0	0	0	0	0	0	0	4
Reading Literacy - Master's	13.1315	ED	1	2	0	2	0	0	0	0	0	0	0	0	1	4
Family Life & Relations Studies	19.0704	ED	0	16	0	15	0	0	0	0	0	0	0	0	0	31
Psychology, General	42.0101	ED	1	8	1	10	0	0	0	0	0	0	0	0	2	18
Speech-Language Pathology - Master's	51.0203	ED	0	7	0	0	0	0	0	0	0	0	0	0	0	7
Speech-Language Pathology - Bachelor's	51.0203	ED	0	12	0	1	0	0	0	0	0	0	0	0	0	13
Art Teacher Education	13.1302	FA	2	2	0	0	0	0	0	0	0	0	0	0	2	2
Music Education	13.1312	FA	0	1	0	1	0	0	0	0	0	0	1	0	1	2
Visual & Performing Arts	50.0101	FA	5	9	0	2	0	0	0	0	0	0	1	0	6	11
Music, General	50.0901	FA	3	2	0	0	0	0	0	0	0	0	0	0	3	2
Health Teacher Education	13.1307	HK	0	2	0	1	0	0	0	0	0	0	0	0	0	3
Health & Physical Education, General	31.0501	HK	1	6	0	1	0	0	0	0	0	0	0	0	1	7
Spanish Language & Literature	16.0905	HU	0	1	0	0	0	0	0	0	0	0	0	0	0	1
Paralegal/Legal Assistant	22.0103	HU	0	8	0	5	0	0	0	0	0	0	0	0	0	13
English Language & Literature, General	23.0101	HU	2	18	0	2	0	1	0	0	0	0	0	0	2	21
Social Sciences, General	45.0101	HU	2	0	1	2	0	0	0	0	0	0	0	1	3	3
History, General	54.0101	HU	1	1	0	0	0	0	0	0	0	0	0	0	1	1
Political Science, General	45.1001	HU	1	1	0	0	0	0	0	0	0	0	0	0	1	1
Culinary Arts/Chef Training	12.0599	IS	2	5	0	2	0	0	0	0	0	0	0	0	2	7
Nursing (RN Training) - BSN	51.1601	NU	3	47	0	8	0	0	0	0	0	0	0	0	3	55
Nursing (RN Training) - ASN	51.1601	NU	2	31	0	20	0	0	0	0	0	0	0	0	2	51
Nursing (RN Training) - Master's	51.1601	NU	2	20	0	4	0	0	0	0	0	0	0	0	2	24
Biology, General	26.0101	SM	0	7	0	1	0	0	0	0	0	0	0	0	0	8
Micobiology/Bacteriology	26.0501	SM	1	2	0	0	0	0	0	0	0	0	0	0	1	2
Mathematics	27.0101	SM	0	4	0	1	0	0	0	0	0	0	1	0	1	5
Physical Sciences	400101	SM	0	1	0	1	0	0	0	0	0	0	0	0	0	2
Chemistry, General	40.0501	SM	1	0	0	0	0	0	0	0	0	0	0	0	1	0
Totals			38	293	6	104	0	1	0	1	1	3	3	6	48	408

Table 24: History of Degrees Granted by Major and Gender

Area	CIP	Division	AY 2004		AY 2003		AY 2002		AY 2001		AY 2000	
			Men	Women	Men	Women	Men	Women	Men	Women	Men	Women
Communications, General	9.0101	BU	2	13	2	10	2	13	4	16	2	8
Journalism	9.0401	BU	0	0	0	0	0	0	0	1	0	3
Broadcast Journalism	9.0402	BU	0	0	0	0	0	0	1	2	1	3
Clothing/Apparel & Textile Studies	19.0901	BU	0	0	0	1	0	1	0	3	0	2
Business Administration & Mgt., Gen.	52.0201	BU	5	19	14	28	14	23	14	34	12	32
Accounting	52.0301	BU	5	13	1	11	2	17	4	20	0	16
Business & Communication Total			12	45	17	50	18	54	23	76	15	64
Curriculum & Instruction	13.0301	ED	0	5	0	9	1	7	0	9	0	0
Special Education, General	13.1001	ED	0	0	0	0	0	0	0	0	0	0
Educ.of the Gifted and Talented - Master's	13.1004	ED	0	8	0	6	0	17	1	10	0	10
Elementary Teacher Education	13.1202	ED	1	52	1	53	1	54	1	57	1	62
Secondary Teacher Education (MAT)	13.1205	ED	0	4	0	1	0	2	0	0	0	0
Reading Teacher Education	13.1315	ED	1	4	0	0	0	0	0	0	0	0
Individual/Family Devel. Studies, Gen.	19.0701	ED	0	0	0	0	0	1	0	1	0	15
Family Life & Relations	19.0704	ED	0	31	1	25	0	17	0	21	0	0
Psychology, General	42.0101	ED	2	18	1	22	2	19	0	26	2	34
Speech-Language Pathology - Master's	51.0203	ED	0	7	0	16	0	13	0	11	0	19
Speech-Language Pathology - Bachelor's	51.0203	ED	0	13	1	8	0	8	0	12	0	11
Education & Human Sciences Total			4	142	4	140	4	138	2	147	3	151
Art Teacher Education	13.1302	FA	2	2	0	0	0	3	0	1	0	3
Music Teacher Education	13.1312	FA	1	2	0	0	0	0	0	0	0	0
Visual & Performing Arts	50.0101	FA	6	11	3	18	6	14	2	12	4	15
Music, General	50.0901	FA	3	2	0	0	0	0	0	3	0	2
Fine & Performing Arts Total			12	17	3	18	6	17	2	16	4	20
Health Teacher Education	13.1307	HK	0	3	1	5	0	1	1	2	0	0
Health & Physical Education, General	31.0501	HK	1	7	4	12	1	16	5	15	2	14
Health & Kinesiology Total			1	10	5	17	1	17	6	17	2	14
Spanish Language & Literature	16.0905	HU	0	1	0	1	1	3	0	3	0	1
Paralegal/Legal Assistant	22.0103	HU	0	13	2	10	1	11	1	13	3	12
English Language & Literature, General	23.0101	HU	2	21	1	14	1	17	0	12	0	15
Social Sciences, General	45.0101	HU	3	3	2	8	2	10	2	10	4	5
History, General	45.0801	HU	1	1	0	1	0	6	2	3	3	3
Political Science, General	45.1001	HU	1	1	0	2	0	0	2	1	0	1
Humanities Total			7	40	5	36	5	47	7	42	10	37

Table 24: History of Degrees Granted by Major and Gender

Area	CIP	Division	AY 2004		AY 2003		AY 2002		AY 2001		AY 2000	
			Men	Women	Men	Women	Men	Women	Men	Women	Men	Women
Culinary Arts/Chef Training	12.0599	IS	2	7	1	15	5	8	3	6	4	2
Interdisciplinary Studies Total			2	7	1	15	5	8	3	6	4	2
Nursing (RN Training) - BSN	51.1601	NU	3	55	7	66	4	68	2	65	4	46
Nursing (RN Training) - ASN	51.1601	NU	2	51	1	39	0	16	7	23	3	23
Nursing (RN Training) - Master's	51.1601	NU	2	24	1	22	2	24	4	23	3	23
Nursing Total			7	130	9	127	6	108	13	111	10	92
Biology, General	26.0101	SM	0	8	0	11	2	10	0	8	3	12
Micobiology/Bacteriology	26.0501	SM	1	2	1	5	1	7	3	9	2	14
Mathematics	27.0101	SM	1	5	0	1	0	4	2	4	0	5
Physical Science, General	40.0101	SM	0	2	0	0	0	0	0	0	0	0
Chemistry, General	40.0501	SM	1	0	0	1	2	4	1	1	1	3
Science & Mathematics Total			3	17	1	18	5	25	6	22	6	34
Totals			48	408	45	421	50	414	62	437	54	414

Degrees Granted AY 1995-2004

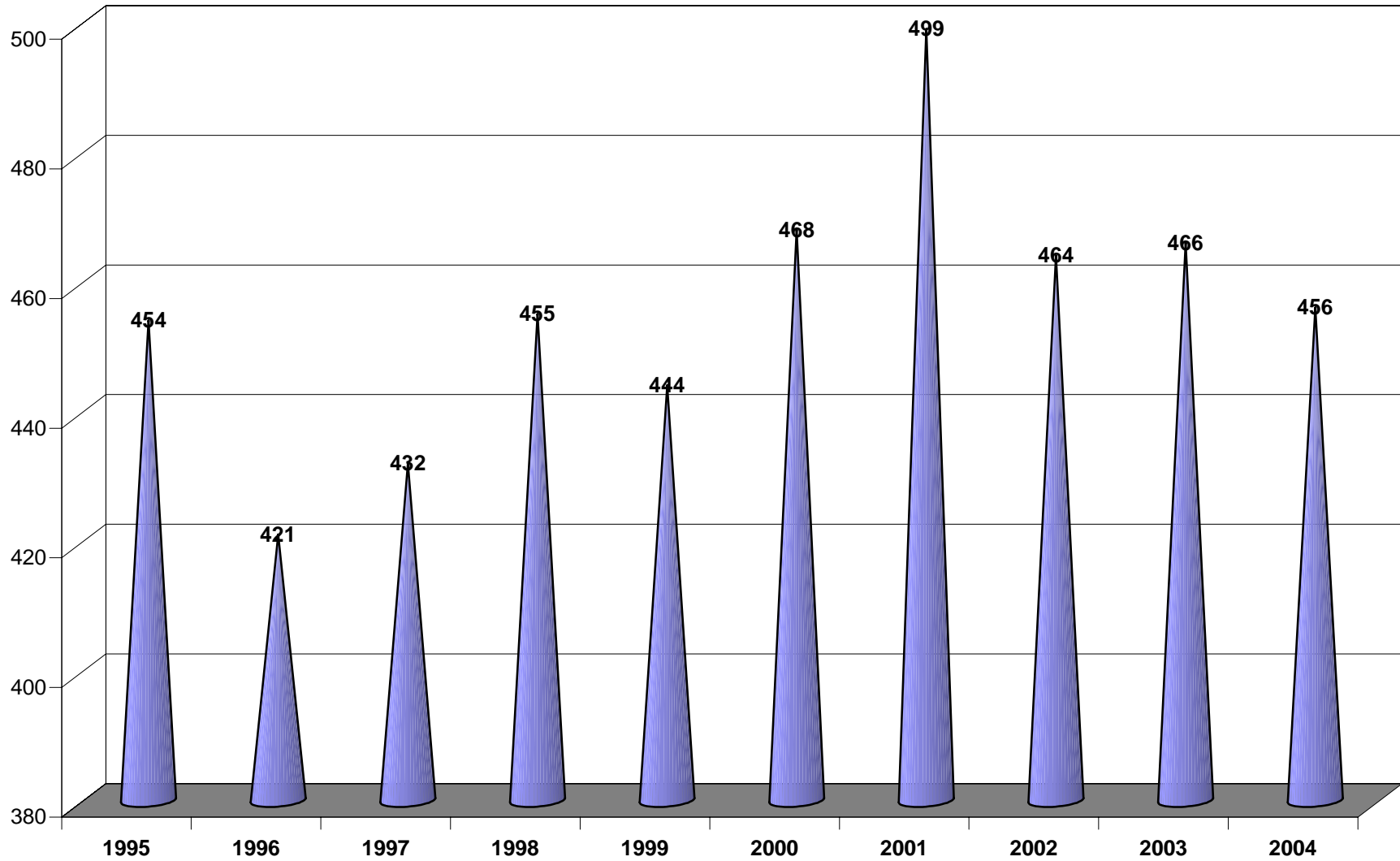
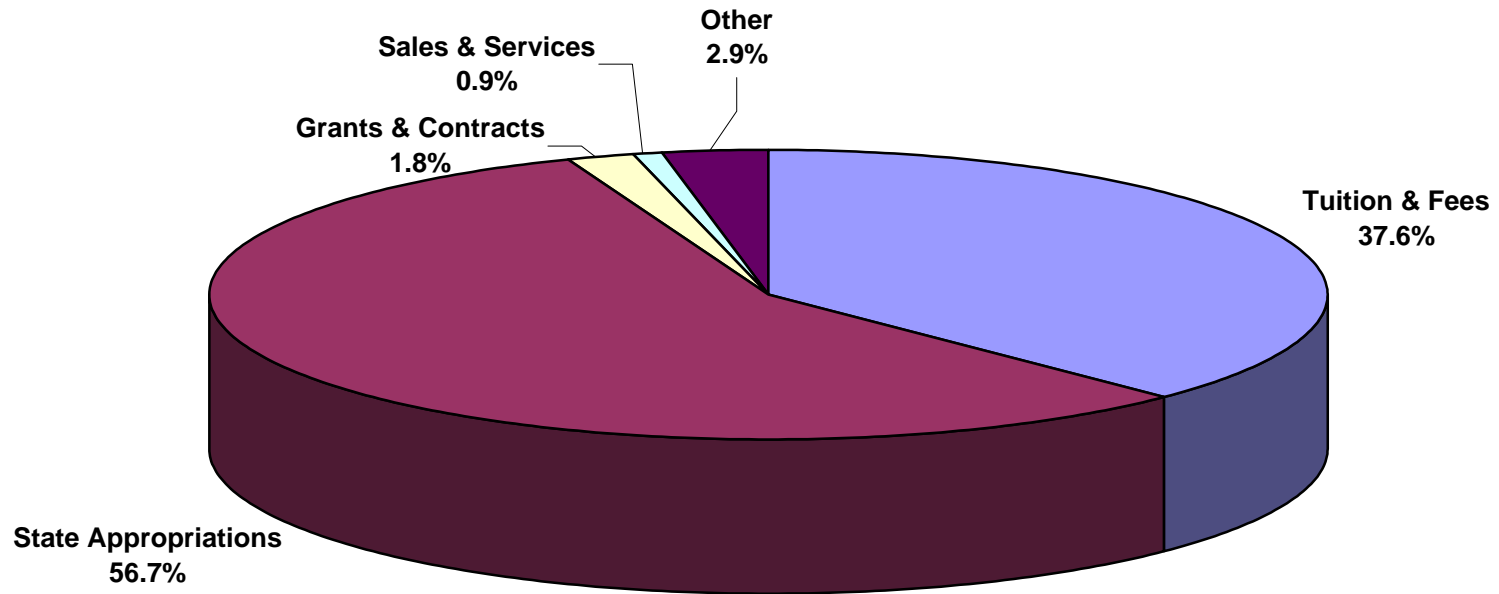


Table 25: Summary of Budgeted E&G Revenues and Expenditures

	2004-05		2003-04	
CURRENT FUND REVENUE				
Tuition and Fees	\$8,932,424	37.63%	\$ 8,219,300	35.84%
State Govt. Appropriations				
General Support	\$ 10,161,930	42.81%	\$ 9,930,991	43.30%
Interest Funds	\$ 9,389	0.04%	\$ 9,389	0.04%
MS Gov. School	\$ 157,500	0.66%	\$ 157,500	0.69%
Tupelo Nursing	\$ -	0.00%	\$ -	0.00%
Edu Enhancement Fund	\$ 1,675,488	7.06%	\$ 1,675,488	7.31%
Edu Enhancement Surplus	\$ -	0.00%	\$ -	0.00%
Contingency Funds	\$ 1,450,568	6.11%	\$ 1,531,392	6.68%
Sub-Total	\$ 13,454,875	56.68%	\$ 13,304,760	58.01%
Local Govt. Appropriations	\$ -	0.00%	\$ 52,500	0.23%
Total Govt. Appropriations	\$ 13,454,875	56.68%	\$ 13,357,260	58.24%
Grants and Contracts				
Federal Grants and Contracts	\$ 35,866	0.15%	\$ 33,400	0.15%
State Grants and Contracts	\$ 188,097	0.79%	\$ 188,097	0.82%
Other	\$ 213,579	0.90%	\$ 213,579	0.93%
Sub-Total	\$ 437,542	1.84%	\$ 435,076	1.90%
Sales and Services	\$ 215,093	0.91%	\$ 224,393	0.98%
Other	\$ 699,836	2.95%	\$ 699,836	3.05%
TOTAL CURRENT REVENUE	\$ 23,739,770	100.00%	\$ 22,935,865	100.00%
CURRENT FUND EXPENDITURES				
Total Instructional Cost	\$ 10,514,671	44.29%	\$ 10,182,453	44.40%
Research	\$ 9,813	0.04%	\$ 9,813	0.04%
Public Service	\$ 193,712	0.82%	\$ 201,393	0.88%
Academic Support	\$ 1,498,323	6.31%	\$ 1,525,579	6.65%
Student Services	\$ 2,353,333	9.91%	\$ 2,015,137	8.79%
Institutional Support	\$ 4,132,050	17.41%	\$ 3,937,896	17.17%
Operations & Maintenance	\$ 2,878,868	12.13%	\$ 2,773,639	12.09%
Scholarships & Fellowships	\$ 2,159,000	9.09%	\$ 2,249,000	9.81%
Mandatory Transfers	\$ -	0.00%	\$ 40,955	
Non-Mandatory Transfers	\$ -	0.00%	\$ -	
TOTAL CURRENT EXPENDITURES	\$ 23,739,770	100.00%	\$ 22,935,865	100.00%

SOURCE: MUW General Fund Budgets

2004-2005 MUW GENERAL FUND BUDGET PERCENT OF TOTAL E&G REVENUE BY BUDGET ENTITY



**2004-2005 MUW GENERAL FUND BUDGET
PERCENT OF TOTAL E&G EXPENDITURES BY BUDGET ENTITY**

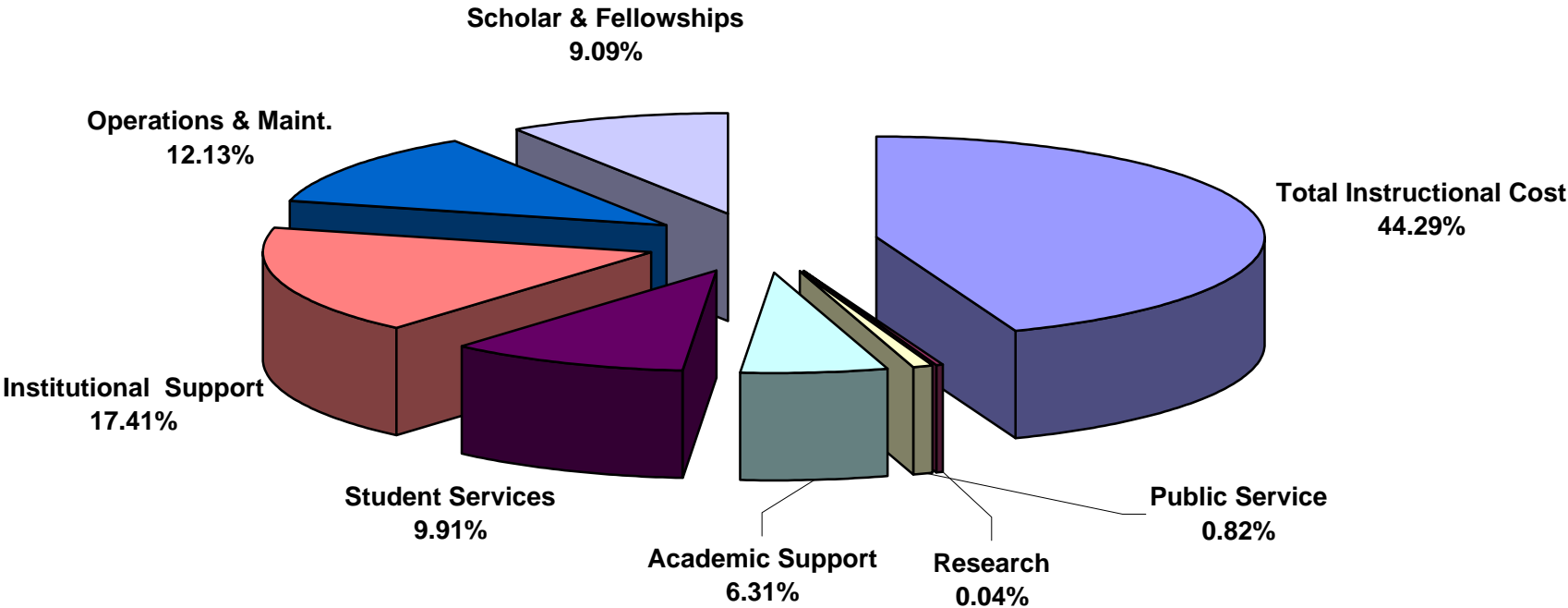


Table 26
Authorization of State General Obligation Bonds for MUW

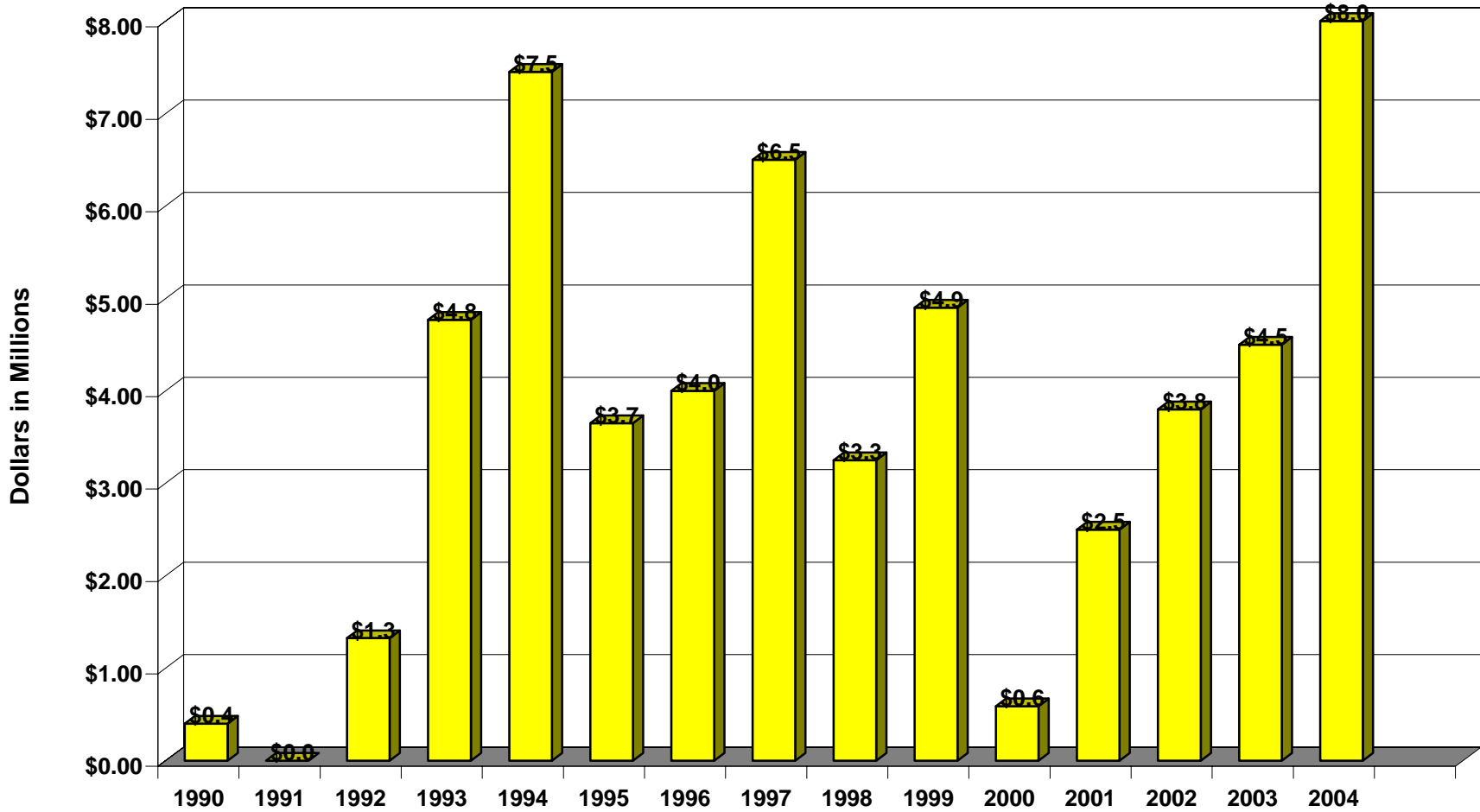


Chart does not include MS Emergency Mgt. Agency disaster recovery funds.

Table 27
Authorization of State General Obligation Bonds for IHL 1990 - 2004

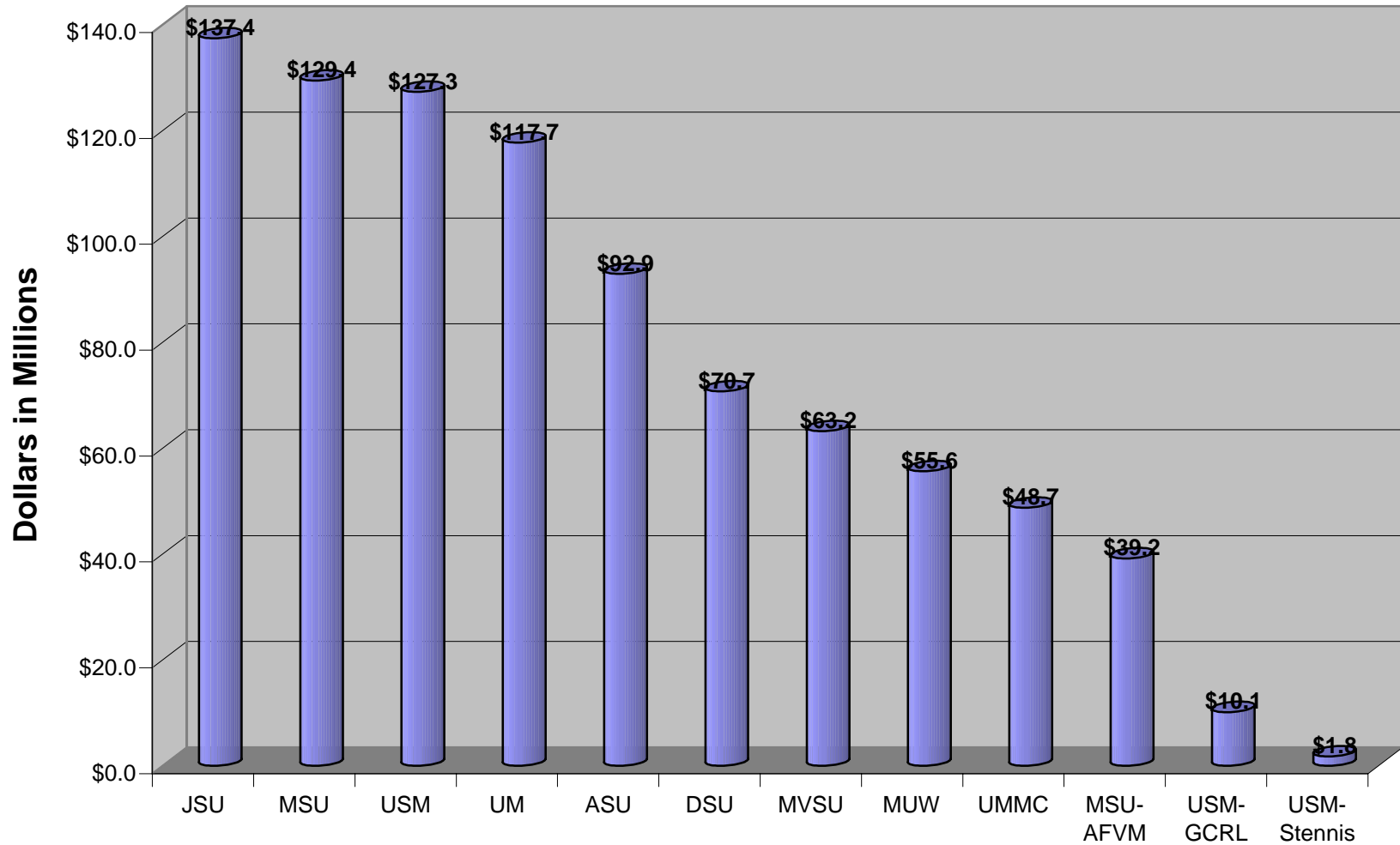


Chart does not include \$30 million Ayers bonds divided between ASU, JSU, and MVSU.
Chart does not include MUW's MS Emergency Mgt. Agency disaster recovery funds.

Explanation of Terms

Academic Year is the year that begins with the first summer session and continues through the next spring session; for example, Academic Year 2004-2005 refers to Summer 2004, Fall 2004, and Spring 2005.

ACT is the American College Test, which is divided into four main sections: Mathematics, English, Reading, and Science Reasoning.

CIP Codes are the Classification of Instructional Program Codes that were developed in 2000. These six-digit codes are used to answer questions concerning program enrollments and completions on three of the IPEDS Surveys: Institutional Characteristics, Completions, and Enrollment in Occupationally Specific Programs.

Cohort refers to a specific population, which is studied over a period of time, such as a group of students who enrolled for the first time in the Fall of 2004.

EMAS is the Enrollment Management Action System software that is used by the Admissions Office.

Fiscal Year is the year that begins on July 1 and ends on June 30; for example, Fiscal Year 2004-2005 (FY 05) extends from July 1, 2004 through June 30, 2005.

Full-time graduate student is one who is enrolled in 9 or more semester credit hours.

Full-time undergraduate student is one who is enrolled in 12 or more semester credit hours.

Graduate FTE (full-time equivalent) is calculated by dividing total graduate semester credit hours by 12.

Headcount as defined by IHL is the actual number of different individuals enrolled in credit courses. Headcount, which, unless otherwise stated, is a duplicated number, duplicates students who take classes on more than one campus. According to IHL's definition, an undergraduate student who takes nine hours on main campus and three hours at the Columbus Air Force Base is counted as two part-time undergraduate students. A student's full-time/part-time status is determined by hours per campus not total hours taken.

IHL refers to the Board of Trustees of State Institutions of Higher Learning in Mississippi.

IPEDS is the Integrated Post-secondary Education Data System.

Non-traditional student, as defined by IHL, refers to an undergraduate student who is 25 years of age or over.

Part-time graduate student is one who is enrolled in less than 9 semester credit hours.

Part-time undergraduate student is one who is enrolled in less than 12 semester credit hours.

Ranked faculty are full-time faculty positions including instructors, assistant professors, associate professors, and professors.

Resident vs. non-resident – A student is defined as a resident or in-state student only if his or her residence has been in the state of Mississippi for a continuous period of at least twelve months immediately preceding his or her admission. Until a student reaches 22 years of age, residency is based on the residence of the parent or guardian.

SREB (Southern Regional Education Board) States include: Alabama, Arkansas, Delaware, Florida, Georgia, Kentucky, Louisiana, Mississippi, Maryland, North Carolina, Oklahoma, South Carolina, Tennessee, Texas, Virginia, and West Virginia.

Student Level, as defined by IHL
Definitions Effective as of the Beginning of Summer 2001

Freshmen – Students who have completed less than 30 semester hours.

Sophomores – Students who have completed at least 30 semester hours, but fewer than 60 semester hours.

Juniors – Students who have completed at least 60 semester hours, but fewer than 90 semester hours.

Seniors – Students who have completed at least 87 semester hours, but have not completed all the requirements for the undergraduate degree for which she/he is currently enrolled.

Fifth Year Level – Student is at advanced undergraduate upper level in five-year programs (e.g. architecture and engineering) or students with a bachelor's or higher degree who are taking additional undergraduate courses.

Master's – Student is in a program or degree that usually covers one year and approximately 30 semester hours above the baccalaureate.

Specialist – Student is in a program or degree that usually covers one year and approximately 30-36 semester hours above the baccalaureate.

Doctoral – Student is in a program or degree that usually covers two years and approximately 60 semester hours above the master’s

Unclassified Post-baccalaureate – Student is not a candidate for a Baccalaureate degree or other formal award, although taking graduate classes with other students. Includes but is not limited to “special” and other students taking first-professional or graduate courses, but who are not working toward a degree.

First Professional – Student is in the first year of a Year/Level 1 program or degree leading to the first level of professional training, as recognized by others in the profession. Examples: J.D., M.D., D.V.M. etc.

Type of current registration as defined by IHL:

First-time Freshman – (1) an entering freshman granted fewer hours than required for transfer status (less than 12 hours), including students enrolled in the fall term who attended college for the first time in the prior summer term and did not have the twelve hours required for transfer status or (2) a student who successfully completed the twelve hour Summer Development Program regardless of the institution attended or (3) a student who entered with advance standing (college credits earned before high school graduation)

Returning Student – An undergraduate student who has registered at this institution during the preceding regular term and would not be classed as a first-time freshman.

Readmitted Student – An undergraduate student who previously attended this institution but did not attend this institution during the previous regular term.

Transfer Student – An undergraduate student entering the reporting institution for the first time who was granted at least twelve hours toward a degree or certificate for work done at another post-secondary institution – exceptions include Summer Developmental Program participants and students with advance placement credit or some other form of advanced standing.

Returning Graduate Students – A student who is enrolled for credit for work creditable toward a graduate degree, i.e., master’s, specialist, or doctorate and was previously registered as a graduate student at this institution or another institution.

First-Professional Student – A student who is enrolled for work creditable toward a first professional degree (law, dentistry, medicine)

Transient Student – A student who is regularly enrolled and in good standing at an institution other than the reporting institution and is taking a course or courses at the reporting institution which he/she intends to transfer to his/her regular institution.

High School Student Taking College Courses – A student who is still in high school but has special permission to take a college level course.

Non-formula Students 21 and over - A student who is currently registered under provisions or original admission code of 6 on data element 4-112 which is for students who are at least age 21 and who do not meet admissions standards and who do not fall into the first five Original Admission Code categories.

First-time graduate student – A new graduate student. One who has not been registered previously as a graduate student.

Other – A student who is not classified in one of the preceding categories.

Summer Developmental Program Participant – A student who does not meet one of the four criteria to gain admission defined by Original Admission Code (Element 4-112, Codes “E” through “H”) Valid in summer term only

Unduplicated headcount figures count each individual student once regardless of the number of branch campus affiliations (Tupelo, Columbus Air Force Base).

Undergraduate FTE (full-time equivalent) is calculated by dividing total undergraduate semester credit hours by 15.

Unranked faculty are full-time faculty positions filled by lecturers who do not have tenure and cannot seek rank.

University Abbreviations:

ASU – Alcorn State University

DSU – Delta State University

JSU – Jackson State University

MSU –Mississippi State University

MUW – Mississippi University for Women

MVSU – Mississippi Valley State University

UM – University of Mississippi

UMMC – University of Mississippi Medical Center

USM – University of Southern Mississippi

MSU-AFVM – Mississippi State University’s Division of Agriculture, Forestry, and
Veterinary Medicine

USM-GCRL – University of Southern Mississippi’s Gulf Coast Research Laboratory

USM-Stennis – University of Southern Mississippi’s Stennis Space Center