

# **Mississippi University for Women Fact Book 2005-2006**



## **Office of Institutional Research**

**Reneau Hall - 1<sup>st</sup> Floor  
1100 College St., W-160  
Columbus, MS 39701  
662-329-8543**

**MISSISSIPPI UNIVERSITY FOR WOMEN**  
**FACTBOOK 2005 - 2006**

**Table of Contents**

**MUW Vision, Mission, & Guiding Principles .....1**  
**MUW Goals .....3**  
**MUW Profile .....4**  
**Organizational Chart .....5**

<u><b>Table</b></u>	<u><b>Description</b></u>	
1.	First-time, Full-time Bachelor’s Degree Seeking Freshman Student Yield Analysis...	6
1A.	Degree Seeking Transfer Student Yield Analysis.....	7
1B.	First-time, Full-time Bachelor’s Degree Seeking Freshman Headcount (Graph).....	8
2.	First-time, Full-time Bachelor’s Degree Seeking Freshman ACT Scores .....	9
3.	Undergraduate Grade Distribution by College & Dept. – Fall 2005 .....	10
	Graduate Grade Distribution by College & Dept. – Fall 2005 .....	12
	Total Grade Distribution by College & Dept. – Fall 2005 .....	14
4.	Unduplicated Enrollment by Ethnicity, Gender, FT/PT Status, and UG/GR Status for Fall 2005 .....	15
5.	Duplicated Headcount and FTE Enrollment - Fall Terms .....	18
	Duplicated Headcount and FTE Enrollment - Fall Terms Graph .....	19
5a.	Unduplicated Headcount and FTE Enrollment - Fall Terms .....	20
	Unduplicated Headcount and FTE Enrollment - Fall Terms Graph .....	21
6.	Unduplicated Enrollment and Credit Hour Production by FT/PT Status .....	22
	FT/PT Unduplicated Headcount - Fall Terms Graph.....	23
7.	Unduplicated Enrollment By Gender - Fall 1996 to Fall 2005.....	24
	Unduplicated Enrollment By Gender - Fall 1996 to Fall 2005 Graph.....	25
8.	Unduplicated Enrollment By Ethnicity - Fall 1996 to Fall 2005.....	26
	Unduplicated Enrollment By Ethnicity - Fall 1996 to Fall 2005 Graph.....	27

9.	Class Type Enrollment.....	<b>28</b>
10.	Unduplicated Enrollment By Student Classification - Fall Terms.....	<b>29</b>
	Unduplicated Enrollment By Student Classification - Fall Terms Graph.....	<b>30</b>
11.	Non-traditional Vs. Traditional Students - Unduplicated Headcount - Fall Terms ....	<b>31</b>
	Non-traditional Vs. Traditional Students Graph.....	<b>32</b>
12.	Faculty Profile.....	<b>33</b>
	Full-time Faculty Profile Fall 2005 Graph.....	<b>34</b>
13.	Unduplicated Headcount Enrollment by Credit Hours and Student Classification ....	<b>35</b>
14.	Age Distribution by Student Classification: Unduplicated Headcount .....	<b>40</b>
15.	Credit Hour Generation by College & Department .....	<b>41</b>
	Credit Hour Generation by College – Fall 2005 Graph.....	<b>43</b>
16.	Enrollment by Major and Program Type (Unduplicated).....	<b>44</b>
17.	Unduplicated Headcount Enrollment by College: Fall 2003 - Fall 2005 .....	<b>47</b>
18.	Faculty Credit Hour Production by Course Level .....	<b>48</b>
19.	Unduplicated Enrollment by State of Residence: Fall 2001 - 2005.....	<b>49</b>
19A.	Unduplicated Enrollment by State of Residence & Student Classification – Fall 2005 .....	<b>50</b>
20.	Unduplicated Headcount Enrollment by Country: Fall 2001-2005.....	<b>51</b>
21.	Unduplicated Enrollment by MS County: Fall 2000-2004.....	<b>53</b>
22.	Residence Hall Student Headcount.....	<b>56</b>
22A.	Residence Hall Students Vs. Commuter Students Unduplicated Headcount ..	<b>57</b>
23.	Degrees Granted by Major, Ethnicity, and Gender - Academic Year 2005 ....	<b>58</b>
24.	History of Degrees Granted by Major and Gender.....	<b>60</b>
	Degrees Granted AY 1990-2005 Graph .....	<b>63</b>
25.	Summary of Budgeted E&G Revenues and Expenditures .....	<b>64</b>
	2004-2005 E&G Revenues by Budget Entity Graph.....	<b>65</b>
	2002-2005 E&G Expenditures by Budget Entity Graph .....	<b>66</b>
27.	Authorization of State General Obligation Bonds for MUW FY 1990-2006..	<b>67</b>

28. Authorization of State General Obligation Bonds for IHL FY 1990-2006 .....68

**APPENDIX: Explanation of Terms .....69**

# Mississippi University for Women

## Fact Sheet

### **Vision, Mission and Guiding Principles**

#### **Vision**

Building on its long tradition of excellence in liberal arts and professional education, as well as its historic focus on academic and leadership development for women, Mississippi University for Women will continue to be a university that prepares both women and men for successful lives by providing a high-quality education in a personalized learning environment.

#### **Mission**

A Carnegie Master's II public institution, Mississippi University for Women provides high-quality undergraduate and graduate education for women and men in a variety of liberal arts and professional programs, while maintaining its historic commitment to academic and leadership development for women. MUW provides education in Business and Communication, Education and Human Sciences, Fine and Performing Arts, Health and Kinesiology, Humanities, Culinary Arts, Nursing, Science and Mathematics, utilizing small classes and emphasizing a personalized learning environment. The graduates of MUW are prepared for competitive careers and excellent graduate and professional schools. MUW provides educational opportunities throughout Mississippi and the United States while addressing the unique educational and public service needs of northeast Mississippi and adjoining counties in northwest Alabama.

#### **Guiding Principles**

MUW provides high-quality instructional programs that emphasize teaching and learning. With faculty and staff of the highest caliber, MUW is dedicated to providing a campus environment for students that encourages lifelong learning, strong career preparation, and personal growth. Graduates are expected to have skills in communication, technology, and critical thinking, as well as an awareness of self, gender-related issues, cultural diversity, and responsible citizenship.

MUW is student oriented. MUW provides small classes and emphasizes personalized student attention, so that each student will have the opportunity to succeed. MUW offers a student-life program that stimulates learning and leadership development.

MUW values research, scholarship, and creativity. While MUW is primarily a teaching institution, the university supports research, scholarship, and creativity to enhance the professional development of faculty and staff in order to better prepare students.

MUW is committed to diversity among its faculty, staff, and students. The faculty, staff,

and students of MUW represent the global society in which we live. MUW believes that diversity allows students to grow in their understanding of self and others.

MUW endorses sound organizational principles. MUW is committed to operational efficiency, collaborative strategic planning, institutional effectiveness, and creative problem solving.

MUW meets regional, state, and national needs for higher education. MUW responds to the needs of the local community by providing cultural activities; programs for intellectual, professional, and social development; and by assisting in economic development. MUW extends its outreach to the state and nation using multiple delivery methods, including the internet and other advanced systems.

MUW is committed to public service. MUW forms partnerships with businesses, as well as with educational, governmental, public service, and charitable organizations, to create opportunities that provide economic and social advantages for the institution, community, and region.

**Approved by the Mississippi IHL Board on January 15, 2004**

**“W-2009”**

**A Strategic Plan for MUW**

**Goals**

MUW Goal 1: Provide high quality, student-centered instructional programs in a personalized learning environment.

MUW Goal 2: Ensure high quality academic and leadership preparation for women.

MUW Goal 3: Provide student life programs that stimulate intellectual, social, emotional, physical, and leadership development.

MUW Goal 4: Increase enrollment through effective recruitment and retention strategies.

MUW Goal 5: Promote effective organizational principles.

MUW Goal 6: Provide programs and services that enhance the cultural, intellectual, social, and professional development of the citizens of our region, state, and nation.

MUW Goal 7: Promote diversity among MUW students, faculty, and staff.

MUW Goal 8: Encourage research, scholarship, and creative endeavors to enhance instruction and professional development.

MUW Goal 9: Provide physical resources, infrastructure, and technology to advance the educational, operational, and public service goals of the University.

MUW Goal 10: Build partnerships and public awareness to support the University’s mission and to promote institutional and economic development.

---

---

**Approved by the President on March 8, 2004**

## **MUW Profile**

*For the second year in a row, MUW is ranked tenth among Southern public master's universities. It is the only Mississippi institution ranked in this category.*

**2,285 unduplicated students are enrolled at MUW for the Fall 2005 semester.**

76 % are full-time students

85 % are female

15 % are male

66 % are white

30 % are African-American

14 % are degree seeking new transfer students

10 % are first-time, full-time bachelor's degree seeking freshman students

25.7 is the average age of a MUW student

25.5 is the average age of a male student

25.8 is the average age of a female student

64 % of MUW students are 24 years old or younger

36 % of MUW students are 25 or older

**Student to Faculty FTE Ratio: The Student to Faculty FTE ratio is approximately 12 to 1.**

## **MUW Employees**

MUW has approximately 296 full-time employees.

Approximately 70 % of full-time MUW employees are female.

Approximately 30 % of MUW employees are men.

Approximately 16 % of MUW employees are minorities.

## **Student Fees 2005-2006 AY**

### **Under graduate**

Semester Hour            \$153.75 (In-state)

Semester Hour            \$371.40 (Out-of-state)

### **Graduate**

Semester Hour            \$205.00 (In-state)

Semester Hour            \$423.00 (Out-of-state)

## **Grounds and Buildings**

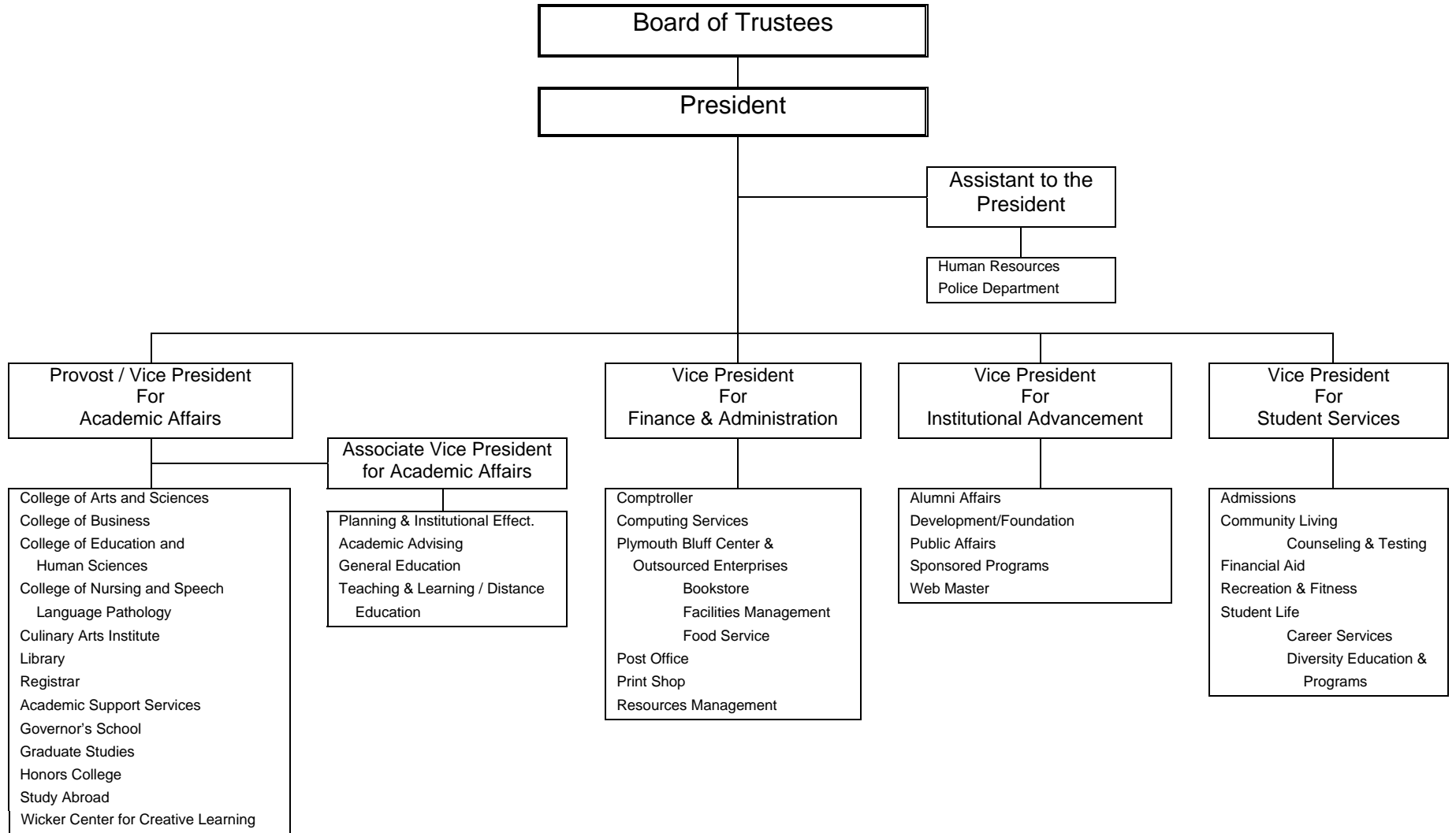
The campus covers 118 acres in residential Columbus, MS. Twenty-three of more than 60 buildings are listed on the National Historic Register.

**MUW is an affirmative action/equal opportunity institution.**

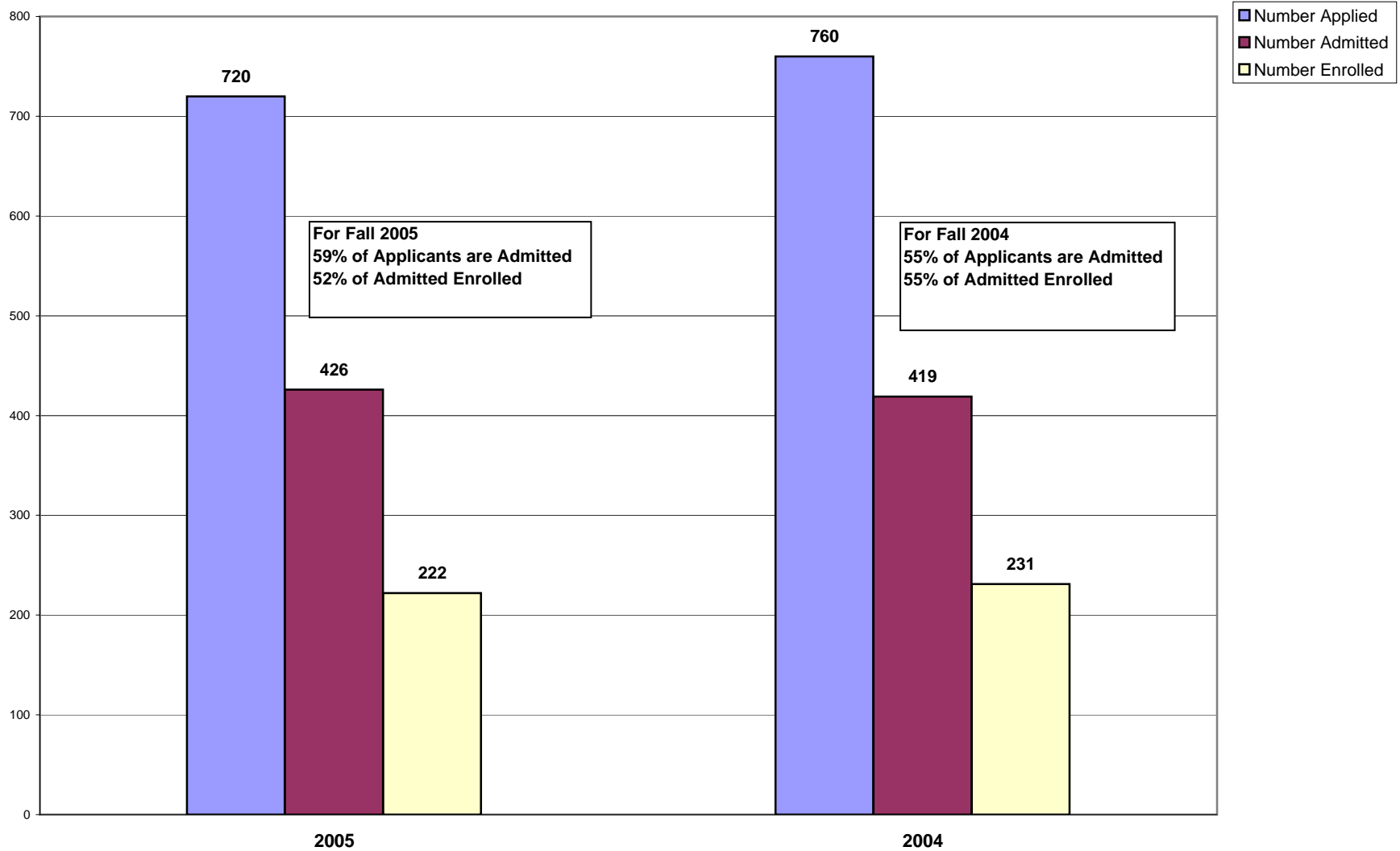


# Mississippi University for Women Organizational Chart

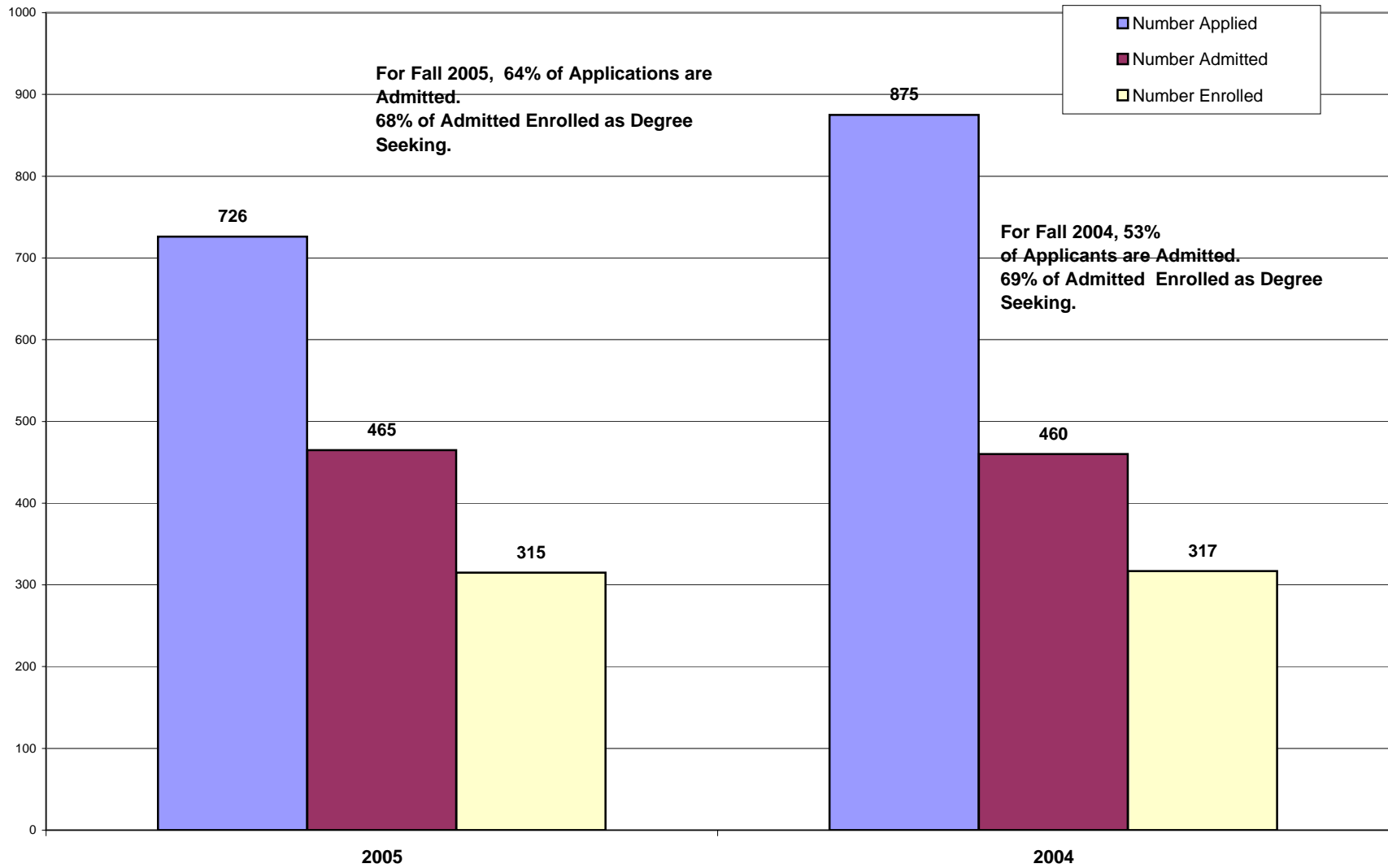
*Effective 9/16/05*



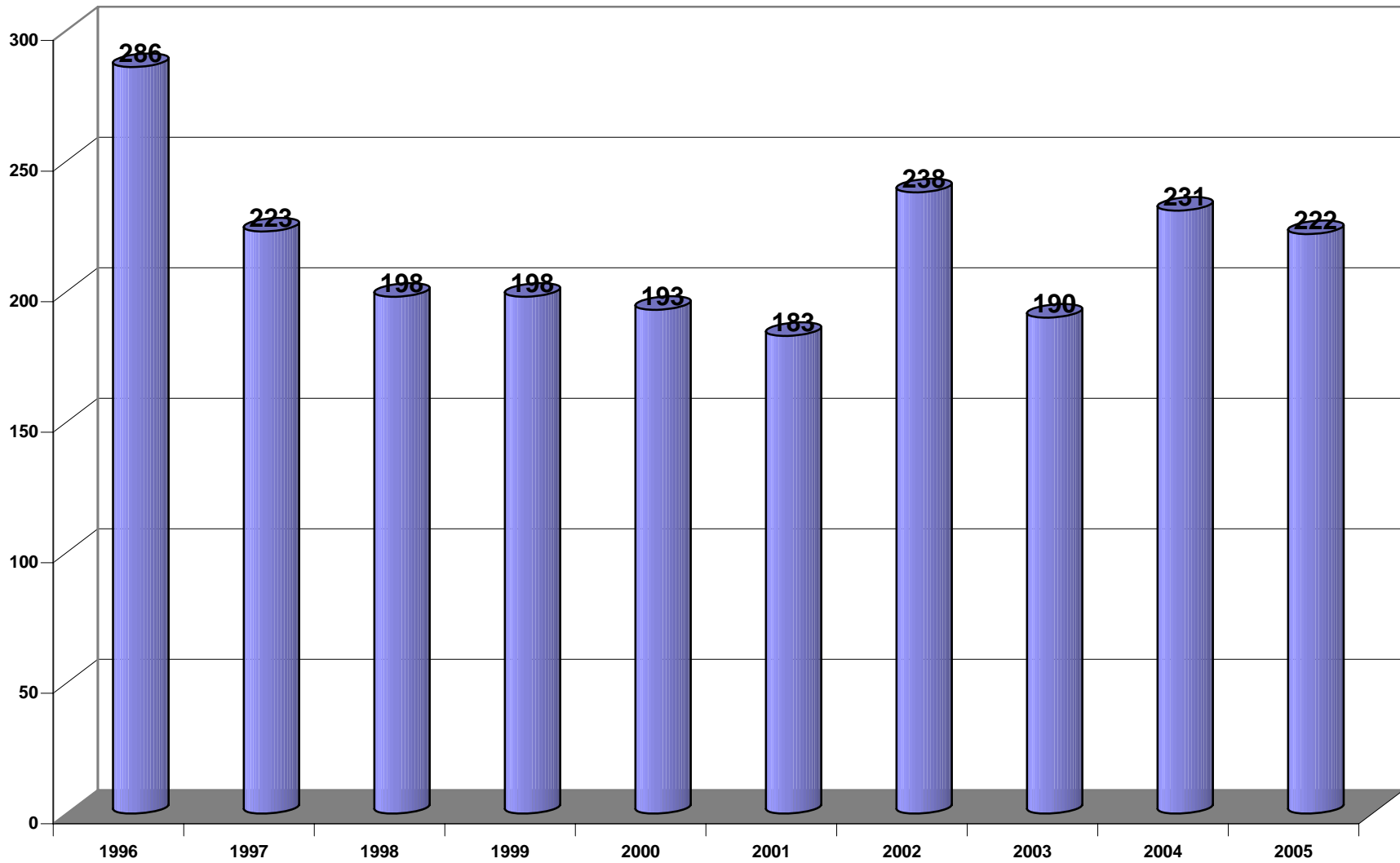
**Table 1: First-time, Full-time Bachelor's Degree Seeking Freshman Student Yield Analysis  
Fall 2005 & Fall 2004**



**Table 1A: Degree Seeking Transfer Student Yield Analysis  
Fall 2005 & Fall 2004**



**Table 1B: First-time, Full-time Bachelor's Degree Seeking Freshman Headcount  
Fall 1996 - 2005**



**Table 2: First-time, Full-time Bachelor's Degree Seeking Freshman  
ACT Scores**

<b>Fall 2001</b>	<b>Composite</b>	<b>Math</b>	<b>English</b>	<b>Reading</b>	<b>Science Reasoning</b>
Twenty-fifth percentile	19	17	19	19	18
Fiftieth percentile	22	19	23	22	21
Seventy-fifth percentile	25	23	26	26	24
Average	21.72	19.99	22.42	22.19	21.26
Minimum	12	13	10	11	9
Maximum	32	33	33	35	35

<b>Fall 2002</b>	<b>Composite</b>	<b>Math</b>	<b>English</b>	<b>Reading</b>	<b>Science Reasoning</b>
Twenty-fifth percentile	18	17	19	18	19
Fiftieth percentile	21	19	21	22	20
Seventy-fifth percentile	24	22	26	27	23
Average	21.36	19.44	22.25	22.28	20.84
Minimum	14	13	11	11	12
Maximum	32	29	35	36	34

<b>Fall 2003</b>	<b>Composite</b>	<b>Math</b>	<b>English</b>	<b>Reading</b>	<b>Science Reasoning</b>
Twenty-fifth percentile	18	16	18	18	18
Fiftieth percentile	21	18	21	22	20
Seventy-fifth percentile	24	21	26	27	23
Average	21.2	19.09	22.07	22.52	20.6
Minimum	14	13	11	12	11
Maximum	29	30	33	36	31

<b>Fall 2004</b>	<b>Composite</b>	<b>Math</b>	<b>English</b>	<b>Reading</b>	<b>Science Reasoning</b>
Twenty-fifth percentile	18	17	18	18	19
Fiftieth percentile	20	18	21	21	20
Seventy-fifth percentile	24	22	25	25	23
Average	21.03	19.15	22.01	21.55	20.65
Minimum	14	7	12	10	14
Maximum	32	30	34	35	30

<b>Fall 2005</b>	<b>Composite</b>	<b>Math</b>	<b>English</b>	<b>Reading</b>	<b>Science Reasoning</b>
Twenty-fifth percentile	18	17	19	18	18
Fiftieth percentile	22	19	22	22	21
Seventy-fifth percentile	25	23	26	27	23
Average	21.69	19.7	22.78	22.86	20.9
Minimum	11	10	10	10	11
Maximum	32	33	35	36	33

**Table 3: Undergraduate Grade Distribution By College and Department Fall 2005**

College	Department	UG/GR	A		B		C		D		F		Other								Other Total		Total
			#	%	#	%	#	%	#	%	#	%	AU	I	NA	NC	P	W	WF	WP	#	%	
Arts & Sciences	Communication	UG	152	53%	81	28%	24	8%	4	1%	13	5%	1	1	0	0	0	3	3	6	14	5%	288
	History, Pol Sci, Geo & Plg	UG	263	31%	215	25%	179	21%	63	7%	68	8%	2	7	1	0	0	22	4	25	61	7%	849
	Honors	UG	93	89%	7	7%	3	3%	0	0%	0	0%	0	0	0	0	0	0	0	1	1	1%	104
	Languages, Lit & Philosophy	UG	386	34%	356	31%	164	14%	43	4%	59	5%	4	3	0	64	0	30	1	41	143	12%	1151
	Music and Theatre	UG	203	56%	93	26%	25	7%	11	3%	12	3%	2	5	0	0	0	6	0	4	17	5%	361
	Science & Mathematics	UG	362	22%	344	21%	281	17%	176	11%	277	17%	3	5	1	9	64	46	10	90	228	14%	1668
	Art and Design	UG	206	50%	115	28%	44	11%	12	3%	13	3%	4	6	1	0	0	6	2	4	23	6%	413
	<b>Total</b>			<b>1665</b>	<b>34%</b>	<b>1211</b>	<b>25%</b>	<b>720</b>	<b>15%</b>	<b>309</b>	<b>6%</b>	<b>442</b>	<b>9%</b>	<b>16</b>	<b>27</b>	<b>3</b>	<b>73</b>	<b>64</b>	<b>113</b>	<b>20</b>	<b>171</b>	<b>487</b>	<b>10%</b>
Business	Business Administration	UG	115	30%	111	29%	75	19%	24	6%	39	10%	0	0	0	0	0	11	5	9	25	6%	389
	Accounting & MIS	UG	133	31%	116	27%	81	19%	23	5%	47	11%	1	0	0	0	0	11	0	11	23	5%	423
	<b>Total</b>		<b>248</b>	<b>31%</b>	<b>227</b>	<b>28%</b>	<b>156</b>	<b>19%</b>	<b>47</b>	<b>6%</b>	<b>86</b>	<b>11%</b>	<b>1</b>	<b>0</b>	<b>0</b>	<b>0</b>	<b>0</b>	<b>22</b>	<b>5</b>	<b>20</b>	<b>48</b>	<b>6%</b>	<b>812</b>
Culinary Arts	Culinary Arts	UG	86	29%	62	21%	23	8%	10	3%	13	4%	0	8	0	0	78	6	0	7	99	34%	293
	<b>Total</b>		<b>86</b>	<b>29%</b>	<b>62</b>	<b>21%</b>	<b>23</b>	<b>8%</b>	<b>10</b>	<b>3%</b>	<b>13</b>	<b>4%</b>	<b>0</b>	<b>8</b>	<b>0</b>	<b>0</b>	<b>78</b>	<b>6</b>	<b>0</b>	<b>7</b>	<b>99</b>	<b>34%</b>	<b>293</b>

College	Department	UG/GR	A		B		C		D		F		Other							Other Total		Total	
			#	%	#	%	#	%	#	%	#	%	AU	I	NA	NC	P	W	WF	WP	#		%
Education & Human Sciences	Education	UG	360	51%	135	19%	60	8%	16	2%	37	5%	1	40	2	3	7	14	0	31	98	14%	706
	Health & Kinesiology	UG	467	63%	136	18%	43	6%	16	2%	28	4%	20	0	1	0	0	14	2	16	53	7%	743
	Psychology & Family Studies	UG	315	36%	253	29%	156	18%	33	4%	58	7%	0	10	1	0	0	15	7	28	61	7%	876
	<b>Total</b>		<b>1142</b>	<b>49%</b>	<b>524</b>	<b>23%</b>	<b>259</b>	<b>11%</b>	<b>65</b>	<b>3%</b>	<b>123</b>	<b>5%</b>	<b>21</b>	<b>50</b>	<b>4</b>	<b>3</b>	<b>7</b>	<b>43</b>	<b>9</b>	<b>75</b>	<b>212</b>	<b>9%</b>	<b>2325</b>

Nursing & Speech Language Pathology	Associate Science in Nursing	UG	186	44%	91	22%	106	25%	10	2%	4	1%	1	0	0	0	0	1	4	16	22	5%	419
	Bachelor of Science in Nursing	UG	163	27%	183	30%	80	13%	7	1%	9	1%	1	2	0	0	144	14	1	10	172	28%	614
	Nursing	UG	91	72%	20	16%	9	7%	2	2%	0	0%	0	0	0	0	4	1	0	0	5	4%	127
	Speech/Language Pathology	UG	63	42%	52	35%	16	11%	4	3%	3	2%	0	0	0	0	0	8	0	4	12	8%	150
	<b>Total</b>		<b>503</b>	<b>38%</b>	<b>346</b>	<b>26%</b>	<b>211</b>	<b>16%</b>	<b>23</b>	<b>2%</b>	<b>16</b>	<b>1%</b>	<b>2</b>	<b>2</b>	<b>0</b>	<b>0</b>	<b>148</b>	<b>24</b>	<b>5</b>	<b>30</b>	<b>211</b>	<b>16%</b>	<b>1310</b>

University	University Classes	UG	235	50%	44	9%	17	4%	7	1%	25	5%	0	5	0	18	103	6	1	9	142	30%	470
	<b>Total</b>		<b>235</b>	<b>50%</b>	<b>44</b>	<b>9%</b>	<b>17</b>	<b>4%</b>	<b>7</b>	<b>1%</b>	<b>25</b>	<b>5%</b>	<b>0</b>	<b>5</b>	<b>0</b>	<b>18</b>	<b>103</b>	<b>6</b>	<b>1</b>	<b>9</b>	<b>142</b>	<b>30%</b>	<b>470</b>

<b>Total</b>			<b>3879</b>	<b>50%</b>	<b>2414</b>	<b>9%</b>	<b>1386</b>	<b>4%</b>	<b>461</b>	<b>1%</b>	<b>705</b>	<b>5%</b>	<b>40</b>	<b>92</b>	<b>7</b>	<b>94</b>	<b>400</b>	<b>214</b>	<b>40</b>	<b>312</b>	<b>142</b>	<b>30%</b>	<b>10044</b>
--------------	--	--	-------------	------------	-------------	-----------	-------------	-----------	------------	-----------	------------	-----------	-----------	-----------	----------	-----------	------------	------------	-----------	------------	------------	------------	--------------

**Table 3: Graduate Grade Distribution By College and Department Fall 2005**

College	Department	UG/GR	A		B		C		D		F		Other								Other Total		Total
			#	%	#	%	#	%	#	%	#	%	AU	I	NA	NC	P	W	WF	WP	#	%	
Education & Human Sciences	Health Education	GR	39	53%	21	29%	3	4%	1	1%	0	0%	0	1	0	0	0	1	0	7	9	12%	73
	Education	GR	74	67%	17	15%	1	1%	0	0%	3	3%	1	6	0	0	0	4	0	5	16	14%	111
	<b>Total</b>		<b>113</b>	<b>61%</b>	<b>38</b>	<b>21%</b>	<b>4</b>	<b>2%</b>	<b>1</b>	<b>1%</b>	<b>3</b>	<b>2%</b>	<b>1</b>	<b>7</b>	<b>0</b>	<b>0</b>	<b>0</b>	<b>5</b>	<b>0</b>	<b>12</b>	<b>25</b>	<b>14%</b>	<b>184</b>
Nursing & Speech Language Pathology	Speech/Language Pathology	GR	55	54%	35	35%	2	2%	0	0%	0	0%	0	0	0	0	0	0	0	9	9	9%	101
	Master of Science in Nursing	GR	202	97%	5	2%	0	0%	0	0%	0	0%	0	0	0	0	0	0	0	1	1	0%	208
	<b>Total</b>		<b>257</b>	<b>83%</b>	<b>40</b>	<b>13%</b>	<b>2</b>	<b>1%</b>	<b>0</b>	<b>0%</b>	<b>0</b>	<b>0%</b>	<b>0</b>	<b>0</b>	<b>0</b>	<b>0</b>	<b>0</b>	<b>0</b>	<b>0</b>	<b>10</b>	<b>10</b>	<b>3%</b>	<b>309</b>
<b>Total</b>			<b>370</b>	<b>83%</b>	<b>78</b>	<b>13%</b>	<b>6</b>	<b>1%</b>	<b>1</b>	<b>0%</b>	<b>3</b>	<b>0%</b>	<b>1</b>	<b>7</b>	<b>0</b>	<b>0</b>	<b>0</b>	<b>5</b>	<b>0</b>	<b>22</b>	<b>10</b>	<b>3%</b>	<b>493</b>



**Table 3: Grade Distribution By College and Department Fall 2005**

College	Department	UG/GR	A		B		C		D		F		Other								Other Total		Total
			#	%	#	%	#	%	#	%	#	%	AU	I	NA	NC	P	W	WF	WP	#	%	
Arts & Sciences	Communication	UG	152	53%	81	28%	24	8%	4	1%	13	5%	1	1	0	0	0	3	3	6	14	5%	288
	History, Pol Sci, Geo & Plg	UG	263	31%	215	25%	179	21%	63	7%	68	8%	2	7	1	0	0	22	4	25	61	7%	849
	Honors	UG	93	89%	7	7%	3	3%	0	0%	0	0%	0	0	0	0	0	0	0	1	1	1%	104
	Languages, Lit & Philosophy	UG	386	34%	356	31%	164	14%	43	4%	59	5%	4	3	0	64	0	30	1	41	143	12%	1151
	Music and Theatre	UG	203	56%	93	26%	25	7%	11	3%	12	3%	2	5	0	0	0	6	0	4	17	5%	361
	Science & Mathematics	UG	362	22%	344	21%	281	17%	176	11%	277	17%	3	5	1	9	64	46	10	90	228	14%	1668
	Art and Design	UG	206	50%	115	28%	44	11%	12	3%	13	3%	4	6	1	0	0	6	2	4	23	6%	413
	<b>Total</b>			<b>1665</b>	<b>34%</b>	<b>1211</b>	<b>25%</b>	<b>720</b>	<b>15%</b>	<b>309</b>	<b>6%</b>	<b>442</b>	<b>9%</b>	<b>16</b>	<b>27</b>	<b>3</b>	<b>73</b>	<b>64</b>	<b>113</b>	<b>20</b>	<b>171</b>	<b>487</b>	<b>10%</b>
Business	Accounting & MIS	UG	133	31%	116	27%	81	19%	23	5%	47	11%	1	0	0	0	0	11	0	11	23	5%	423
	Business Administration	UG	115	30%	111	29%	75	19%	24	6%	39	10%	0	0	0	0	0	11	5	9	25	6%	389
	<b>Total</b>		<b>248</b>	<b>31%</b>	<b>227</b>	<b>28%</b>	<b>156</b>	<b>19%</b>	<b>47</b>	<b>6%</b>	<b>86</b>	<b>11%</b>	<b>1</b>	<b>0</b>	<b>0</b>	<b>0</b>	<b>0</b>	<b>22</b>	<b>5</b>	<b>20</b>	<b>48</b>	<b>6%</b>	<b>812</b>
Culinary Arts	Culinary Arts	UG	86	29%	62	21%	23	8%	10	3%	13	4%	0	8	0	0	78	6	0	7	99	34%	293
	<b>Total</b>		<b>86</b>	<b>29%</b>	<b>62</b>	<b>21%</b>	<b>23</b>	<b>8%</b>	<b>10</b>	<b>3%</b>	<b>13</b>	<b>4%</b>	<b>0</b>	<b>8</b>	<b>0</b>	<b>0</b>	<b>78</b>	<b>6</b>	<b>0</b>	<b>7</b>	<b>99</b>	<b>34%</b>	<b>293</b>

College	Department	UG/GR	A		B		C		D		F		Other							Other Total		Total	
			#	%	#	%	#	%	#	%	#	%	AU	I	NA	NC	P	W	WF	WP	#		%
Education & Human Sciences	Education	GR	74	67%	17	15%	1	1%	0	0%	3	3%	1	6	0	0	0	4	0	5	16	14%	111
	Health & Kinesiology	UG	467	63%	136	18%	43	6%	16	2%	28	4%	20	0	1	0	0	14	2	16	53	7%	743
	Health Education	GR	39	53%	21	29%	3	4%	1	1%	0	0%	0	1	0	0	0	1	0	7	9	12%	73
	Psychology & Family Studies	UG	315	36%	253	29%	156	18%	33	4%	58	7%	0	10	1	0	0	15	7	28	61	7%	876
	Education	UG	360	51%	135	19%	60	8%	16	2%	37	5%	1	40	2	3	7	14	0	31	98	14%	706
	<b>Total</b>			<b>1255</b>	<b>50%</b>	<b>562</b>	<b>22%</b>	<b>263</b>	<b>10%</b>	<b>66</b>	<b>3%</b>	<b>126</b>	<b>5%</b>	<b>22</b>	<b>57</b>	<b>4</b>	<b>3</b>	<b>7</b>	<b>48</b>	<b>9</b>	<b>87</b>	<b>237</b>	<b>9%</b>

Nursing & Speech Language Pathology	Associate Science in Nursing	UG	186	44%	91	22%	106	25%	10	2%	4	1%	1	0	0	0	0	1	4	16	22	5%	419
	Bachelor of Science in Nursing	UG	163	27%	183	30%	80	13%	7	1%	9	1%	1	2	0	0	144	14	1	10	172	28%	614
	Master of Science in Nursing	GR	202	97%	5	2%	0	0%	0	0%	0	0%	0	0	0	0	0	0	0	1	1	0%	208
	Nursing	UG	91	72%	20	16%	9	7%	2	2%	0	0%	0	0	0	0	4	1	0	0	5	4%	127
	Speech/Language Pathology	UG	63	42%	52	35%	16	11%	4	3%	3	2%	0	0	0	0	0	8	0	4	12	8%	150
		GR	55	54%	35	35%	2	2%	0	0%	0	0%	0	0	0	0	0	0	0	0	9	9	9%
<b>Total</b>			<b>760</b>	<b>47%</b>	<b>386</b>	<b>24%</b>	<b>213</b>	<b>13%</b>	<b>23</b>	<b>1%</b>	<b>16</b>	<b>1%</b>	<b>2</b>	<b>2</b>	<b>0</b>	<b>0</b>	<b>148</b>	<b>24</b>	<b>5</b>	<b>40</b>	<b>221</b>	<b>14%</b>	<b>1619</b>

University	University Classes	UG	235	50%	44	9%	17	4%	7	1%	25	5%	0	5	0	18	103	6	1	9	142	30%	470
<b>Total</b>			<b>235</b>	<b>50%</b>	<b>44</b>	<b>9%</b>	<b>17</b>	<b>4%</b>	<b>7</b>	<b>1%</b>	<b>25</b>	<b>5%</b>	<b>0</b>	<b>5</b>	<b>0</b>	<b>18</b>	<b>103</b>	<b>6</b>	<b>1</b>	<b>9</b>	<b>142</b>	<b>30%</b>	<b>470</b>

<b>Total</b>			<b>4249</b>	<b>50%</b>	<b>2492</b>	<b>9%</b>	<b>1392</b>	<b>4%</b>	<b>462</b>	<b>1%</b>	<b>708</b>	<b>5%</b>	<b>41</b>	<b>99</b>	<b>7</b>	<b>94</b>	<b>400</b>	<b>219</b>	<b>40</b>	<b>334</b>	<b>142</b>	<b>30%</b>	<b>10537</b>
--------------	--	--	-------------	------------	-------------	-----------	-------------	-----------	------------	-----------	------------	-----------	-----------	-----------	----------	-----------	------------	------------	-----------	------------	------------	------------	--------------

**Table 4:  
Part A:  
Undergraduate Unduplicated Enrollment  
Fall 2005**

	FT/PT		M/F		Full-time Total	Part-time		Part-time Total	Grand Total
	Male	Female	Male	Female					
<b><i>Ethnicity</i></b>									
White	173	930			1103	80	219	299	1402
African American	47	463			510	14	116	130	640
American Indian	1	6			7	0	0	0	7
Asian	4	15			19	3	6	9	28
Hispanic	1	9			10	4	1	5	15
Non-resident Alien	0	19			19	1	3	4	23
Grand Total	226	1442			1668	102	345	447	2115

**Table 4  
Part B  
Graduate Unduplicated Enrollment  
Fall 2005**

	FT/PT		M/F		Full-Time Total	Part-time		Part-time Total	Grand Total
	Full-Time								
	Male	Female	Male	Female					
<i>Ethnicity</i>									
White	6	53	10	43	59	53	112		
African American	2	12	3	37	14	40	54		
Asian	0	3	0	0	3	0	3		
Non-resident Alien	0	1	0	0	1	0	1		
Grand Total	8	69	13	80	77	93	170		

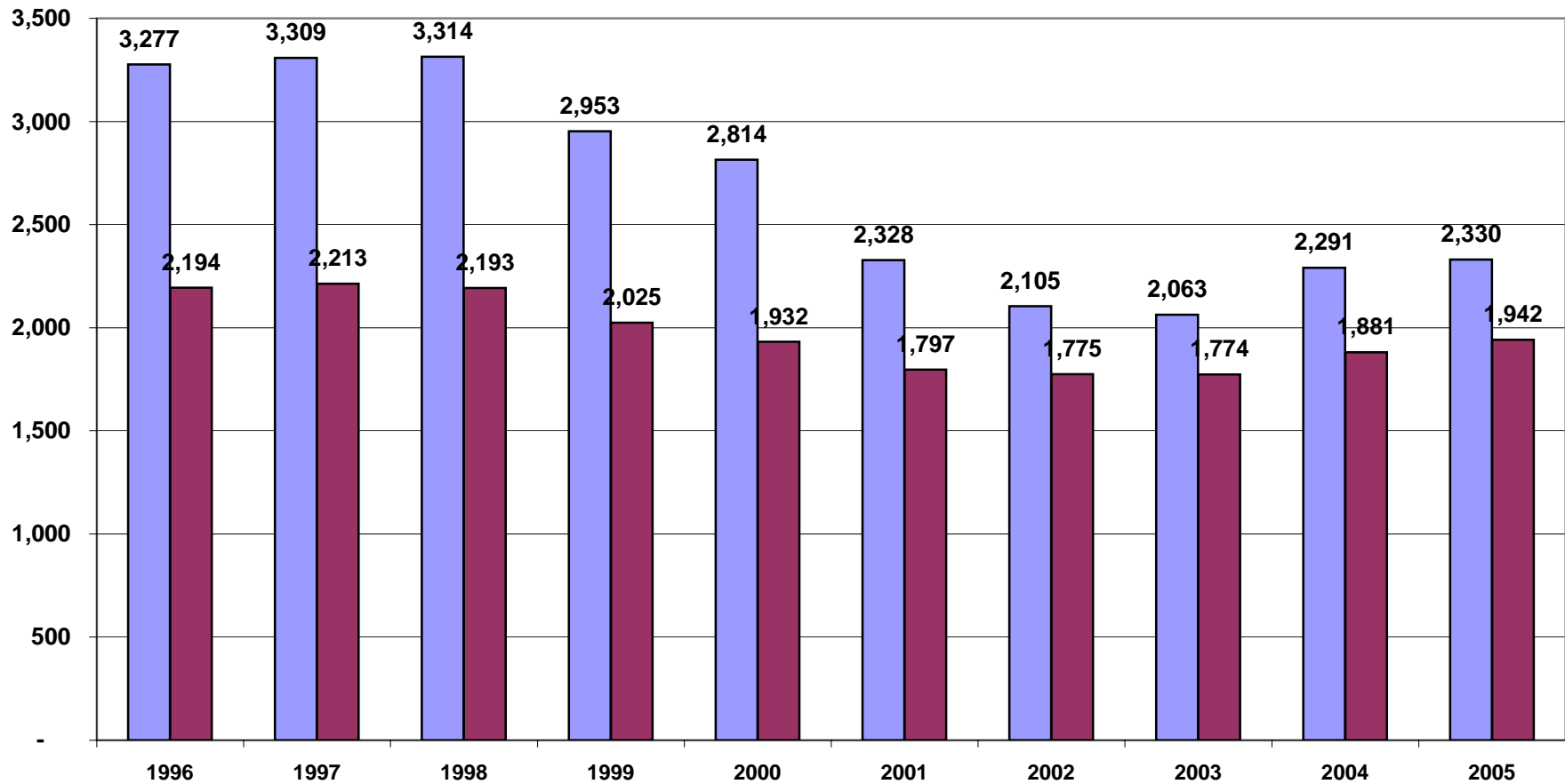
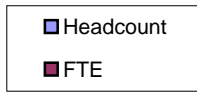
**Table 4**  
**Part C:**  
**Total Undergraduate & Graduate Unduplicated Enrollment**  
**Fall 2005**

	FT/PT		M/F		Full-time Total	Part-time		Part-time Total	Grand Total
	Male	Female	Male	Female					
<i><b>Ethnicity</b></i>									
White	179	983			1162	90	262	352	1514
African American	49	475			524	17	153	170	694
American Indian	1	6			7	0	0	0	7
Asian	4	18			22	3	6	9	31
Hispanic	1	9			10	4	1	5	15
Non-resident Alien	0	20			20	1	3	4	24
Grand Total	234	1511			1745	115	425	540	2285

**Table 5: Duplicated Headcount and FTE Enrollment****Fall Terms**

<b>Fall</b>	<b>Headcount</b>	<b>% Change Year Ago</b>	<b>Total Cr. Hrs.</b>	<b>% Change Year Ago</b>	<b>Total FTE</b>	<b>% Change Year Ago</b>
<b>1995</b>	3,061		30,416		2,055	
<b>1996</b>	3,277	7.06%	32,237	5.99%	2,194	6.76%
<b>1997</b>	3,309	0.98%	33,004	2.38%	2,213	0.87%
<b>1998</b>	3,314	0.15%	30,996	-6.08%	2,193	-0.90%
<b>1999</b>	2,953	-10.89%	29,212	-5.76%	2,025	-7.68%
<b>2000</b>	2,814	-4.71%	27,785	-4.88%	1,932	-4.57%
<b>2001</b>	2,328	-17.27%	26,370	-5.09%	1,797	-6.97%
<b>2002</b>	2,105	-9.58%	26,356	-0.05%	1,775	-1.24%
<b>2003</b>	2,063	-2.00%	26,352	-0.02%	1,774	-0.06%
<b>2004</b>	2,291	11.05%	27,899	5.87%	1,881	6.03%
<b>2005</b>	2,330	1.70%	28,765	3.10%	1,942	3.24%

## Duplicated Headcount and FTE Enrollment Fall Terms

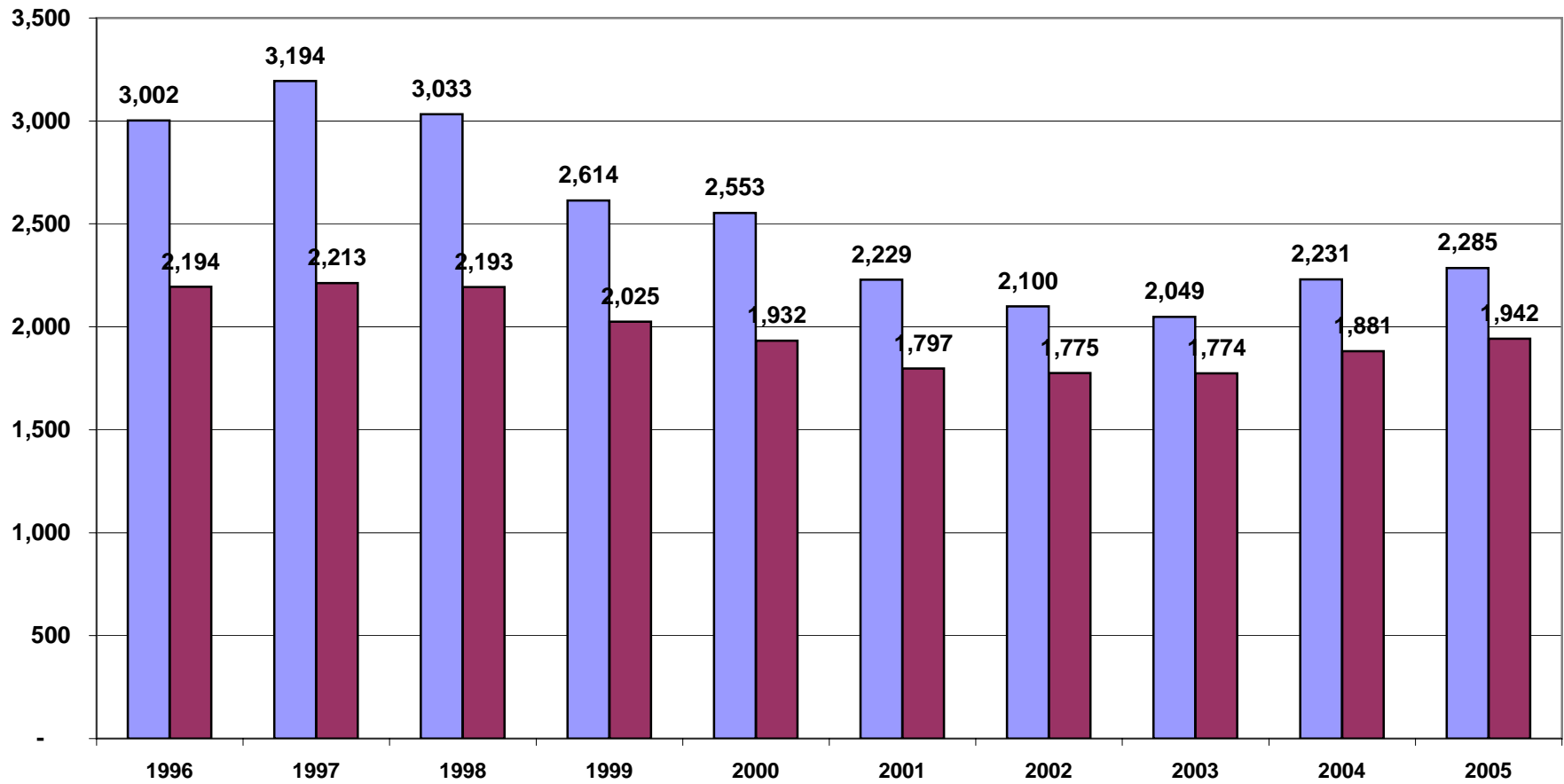
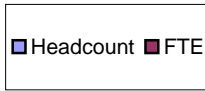


**Table 5a: UNDUPLICATED HEADCOUNT and FTE ENROLLMENT  
Fall Terms**

<b>Fall</b>	<b>Headcount</b>	<b>% Change Year Ago</b>	<b>Total Cr. Hrs.</b>	<b>% Change Year Ago</b>	<b>Total FTE</b>	<b>% Change Year Ago</b>
<b>1996</b>	3,002		32,237		2,194	
<b>1997</b>	3,194	6.40%	33,004	2.38%	2,213	0.87%
<b>1998</b>	3,033	-5.04%	30,996	-6.08%	2,193	-0.90%
<b>1999</b>	2,614	-13.81%	29,212	-5.76%	2,025	-7.68%
<b>2000</b>	2,553	-2.33%	27,785	-4.88%	1,932	-4.57%
<b>2001</b>	2,229	-12.69%	26,370	-5.09%	1,797	-6.97%
<b>2002</b>	2,100	-5.79%	26,356	-0.05%	1,775	-1.24%
<b>2003</b>	2,049	-2.43%	26,352	-0.02%	1,774	-0.06%
<b>2004</b>	2,231	8.88%	27,899	5.87%	1,881	6.03%
<b>2005</b>	2,285	2.42%	28,765	3.10%	1,942	3.24%



# Unduplicated Headcount and FTE Enrollment Fall Terms

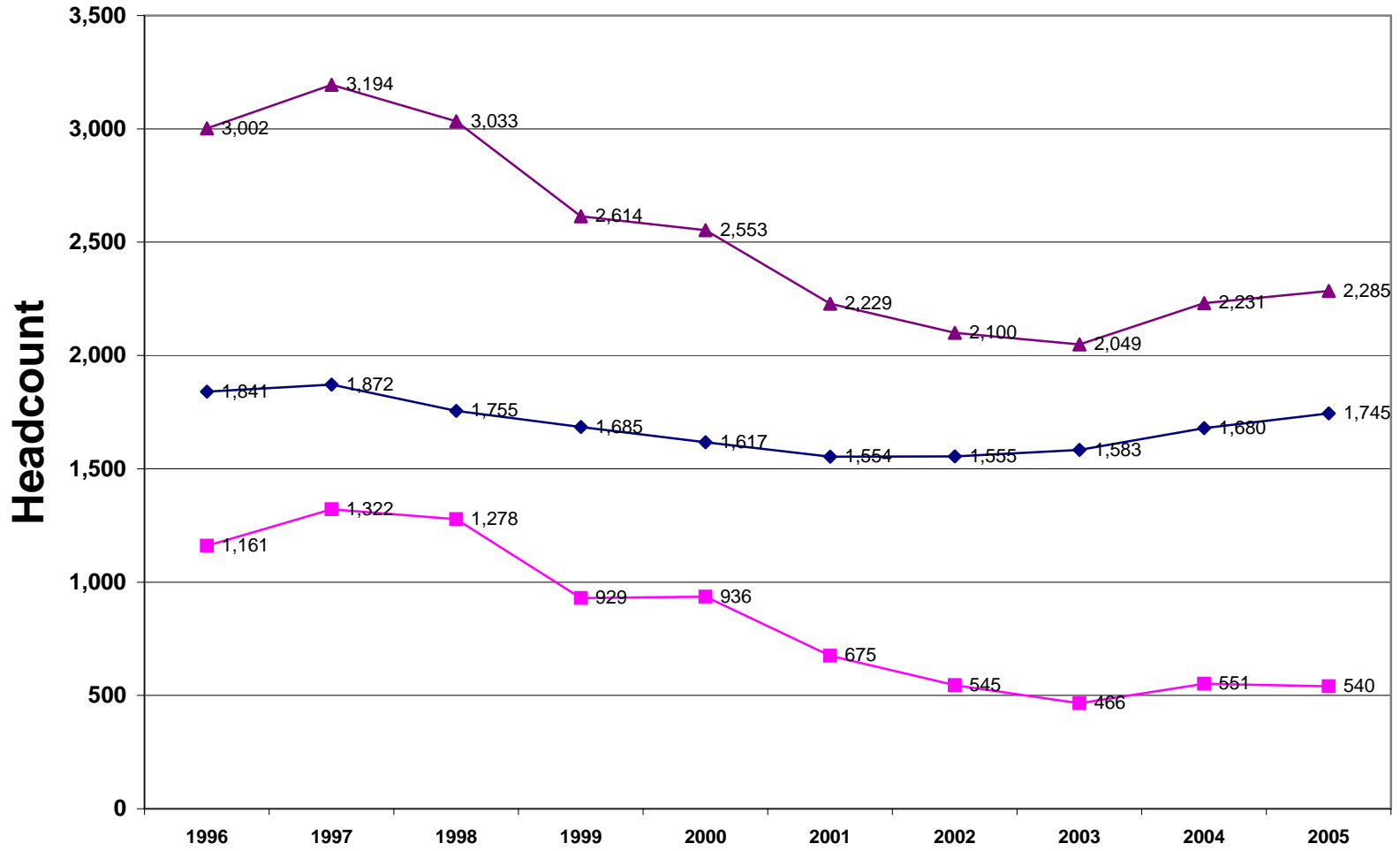
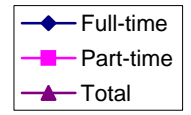


**Table 6: Unduplicated Enrollment & Credit Hour Production by Full-time/Part-time Status  
Fall Terms**

Fall	Headcount											Credit Hours by Student Level										
	Full-time					Part-time					Total	Full-time					Part-time					Total
	UG	GR	Total	UG	GR	Total	UG	GR	Total	UG	GR	Total	UG	GR	Total	UG	GR	Total	UG	GR	Total	
1996	1785	59%	56	2%	1841	986	33%	175	6%	1161	3002	27106	84%	646	2%	27752	4005	12%	480	1%	4485	32237
1997	1822	57%	50	2%	1872	1143	36%	179	6%	1322	3194	27682	84%	598	2%	28280	4259	13%	465	1%	4724	33004
1998	1698	56%	57	2%	1755	1220	40%	58	2%	1278	3033	25896	84%	674	2%	26570	4203	14%	223	1%	4426	30996
1999	1626	62%	59	2%	1685	808	31%	121	5%	929	2614	24713	85%	698	2%	25411	3370	12%	431	1%	3801	29212
2000	1551	61%	66	3%	1617	858	34%	78	3%	936	2553	23511	85%	759	3%	24270	3182	11%	333	1%	3515	27785
2001	1484	67%	70	3%	1554	588	26%	87	4%	675	2229	22650	86%	781	3%	23431	2552	10%	387	1%	2939	26370
2002	1494	71%	61	3%	1555	462	22%	83	4%	545	2100	22811	87%	678	3%	23489	2476	9%	391	1%	2867	26356
2003	1527	75%	56	3%	1583	390	19%	76	4%	466	2049	23148	88%	674	3%	23822	2205	8%	325	1%	2530	26352
2004	1609	72%	71	3%	1680	454	20%	97	4%	551	2231	24100	86%	859	3%	24959	2493	9%	447	2%	2940	27899
2005	1668	73%	77	3%	1745	447	20%	93	4%	540	2285	24848	86%	1,008	4%	25856	2424	8%	485	2%	2909	28765

- Note 1:** Part-time is defined as UG enrolled 11 Cr. hrs or less or GR enrolled 8 Cr. Hrs or less.  
**Note 2:** Full-time is defined as UG enrolled 12 Cr. Hrs or more or GR enrolled 9 Cr. Hrs or more.  
**Note 3:** FT and PT headcount and credit hours data are based on the 10th day of Enrollment.

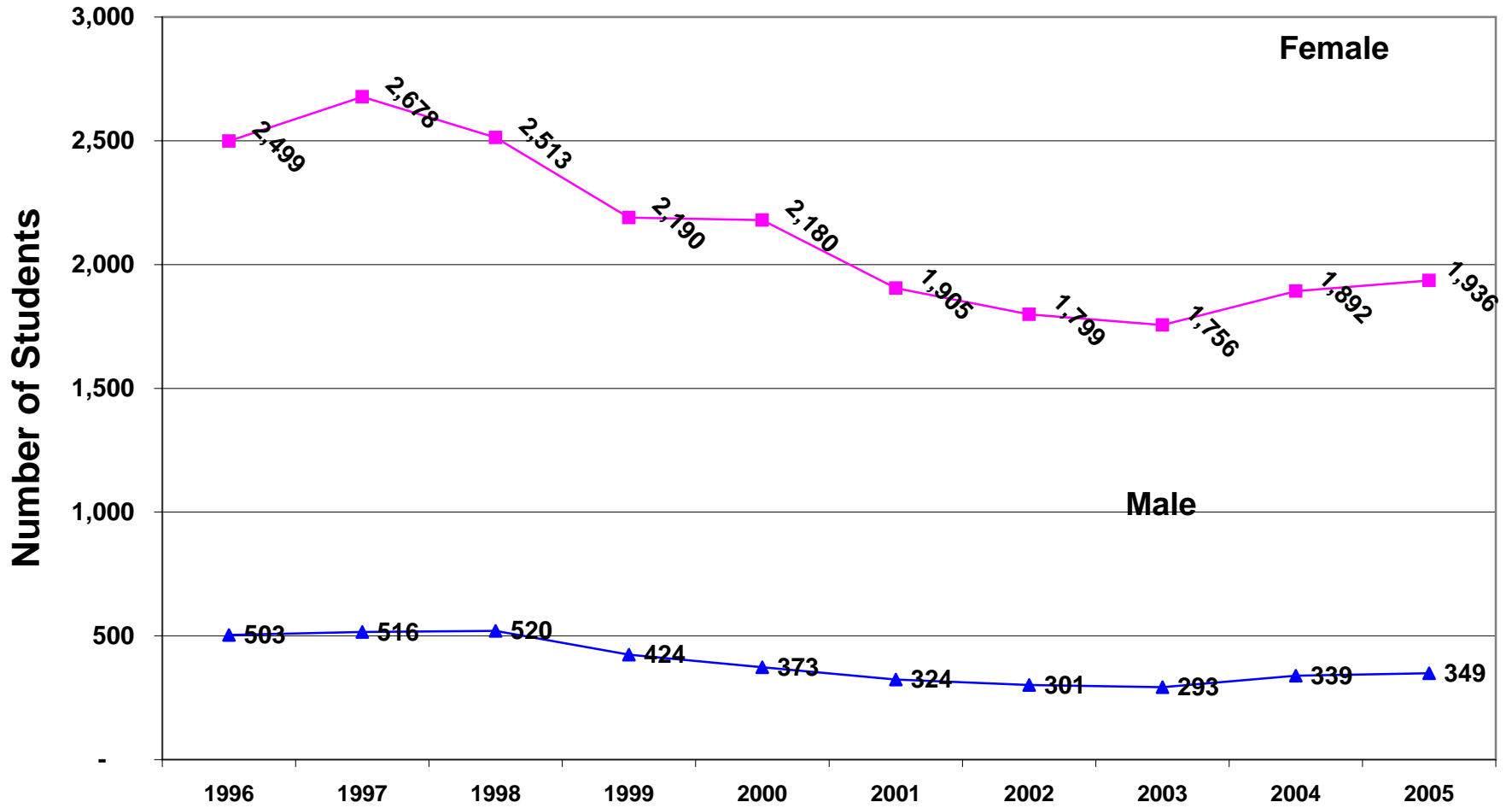
# Full-time & Part-time Unduplicated Headcount Fall Terms



**Table 7: Unduplicated Enrollment by Gender  
FALL 1996 to FALL 2005**

<b>Fall</b>	<b>Total</b>	<b>% Change</b>		<b>No. Female</b>	<b>% Female</b>	<b>No. Male</b>	<b>% Male</b>
		<b>Year Ago</b>					
<b>1996</b>	<b>3,002</b>			<b>2,499</b>	83.24%	<b>503</b>	16.76%
<b>1997</b>	<b>3,194</b>	6.40%		<b>2,678</b>	83.84%	<b>516</b>	16.16%
<b>1998</b>	<b>3,033</b>	-5.04%		<b>2,513</b>	82.86%	<b>520</b>	17.14%
<b>1999</b>	<b>2,614</b>	-13.81%		<b>2,190</b>	83.78%	<b>424</b>	16.22%
<b>2000</b>	<b>2,553</b>	-2.33%		<b>2,180</b>	85.39%	<b>373</b>	14.61%
<b>2001</b>	<b>2,229</b>	-12.69%		<b>1,905</b>	85.46%	<b>324</b>	14.54%
<b>2002</b>	<b>2,100</b>	-5.79%		<b>1,799</b>	85.67%	<b>301</b>	14.33%
<b>2003</b>	<b>2,049</b>	-2.43%		<b>1,756</b>	85.70%	<b>293</b>	14.30%
<b>2004</b>	<b>2,231</b>	8.88%		<b>1,892</b>	84.81%	<b>339</b>	15.19%
<b>2005</b>	<b>2,285</b>	2.42%		<b>1,936</b>	84.73%	<b>349</b>	15.27%

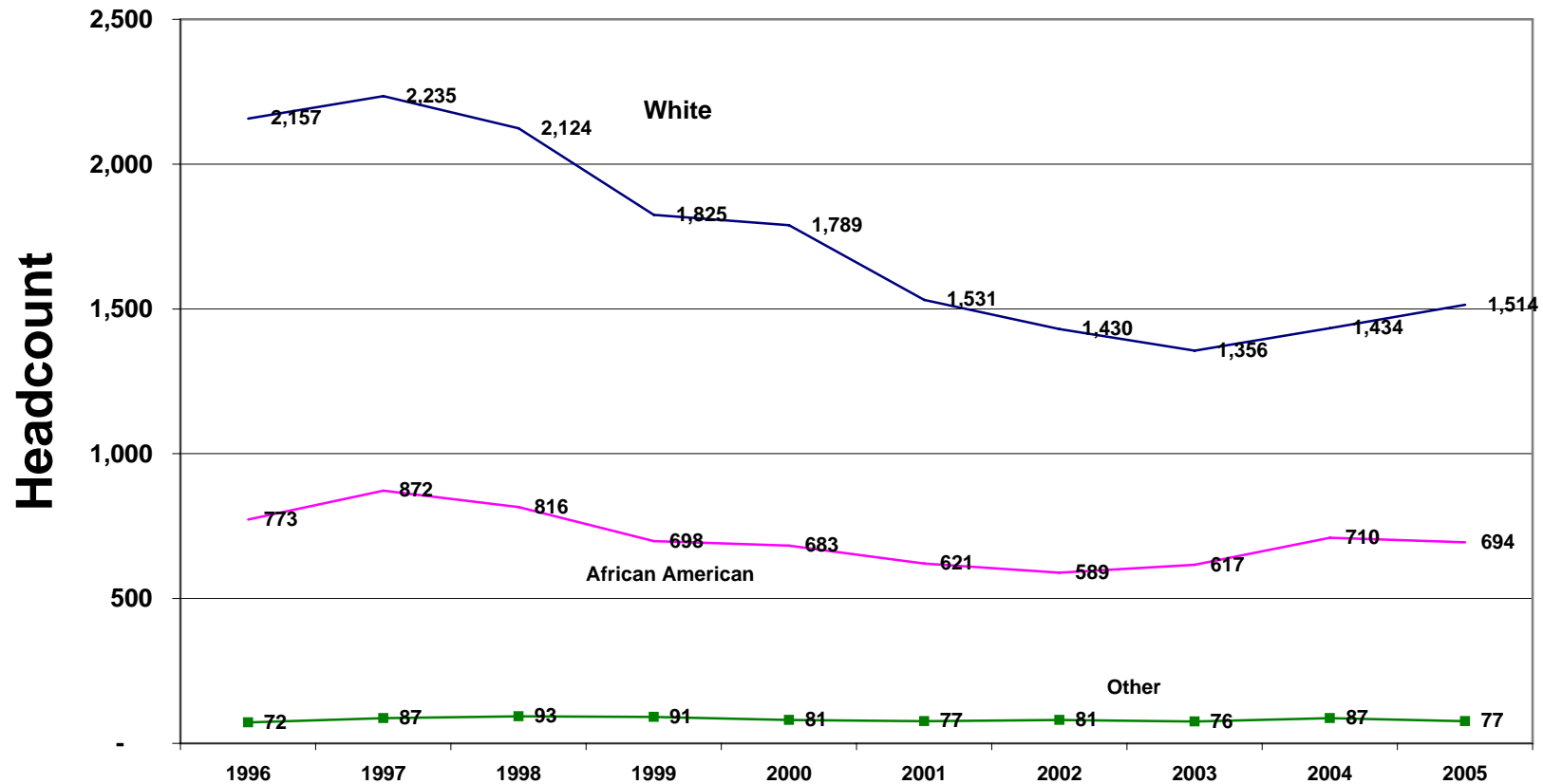
# Unduplicated Enrollment by Gender Fall terms



**TABLE 8: Unduplicated Enrollment by Ethnicity  
Fall 1996-2005**

Fall	White		African American		American Indian		Asian		Hispanic		Not Ident.		Total	
	#	%	#	%	#	%	#	%	#	%	#	%	#	%
<b>1996</b>	2,157	71.9%	773	25.7%	8	0.3%	15	0.5%	10	0.3%	39	1.3%	3,002	100%
<b>1997</b>	2,235	70.0%	872	27.3%	6	0.2%	15	0.5%	14	0.4%	52	1.6%	3,194	100%
<b>1998</b>	2,124	70.0%	816	26.9%	7	0.2%	8	0.3%	18	0.6%	60	2.0%	3,033	100%
<b>1999</b>	1,825	69.8%	698	26.7%	3	0.1%	11	0.4%	17	0.7%	60	2.3%	2,614	100%
<b>2000</b>	1,789	70.1%	683	26.8%	5	0.2%	9	0.4%	13	0.5%	54	2.1%	2,553	100%
<b>2001</b>	1,531	68.7%	621	27.9%	9	0.4%	17	0.8%	15	0.7%	36	1.6%	2,229	100%
<b>2002</b>	1,430	68.1%	589	28.0%	8	0.4%	14	0.7%	17	0.8%	42	2.0%	2,100	100%
<b>2003</b>	1,356	66.2%	617	30.1%	7	0.3%	24	1.2%	13	0.6%	32	1.6%	2,049	100%
<b>2004</b>	1434	64.3%	710	31.8%	11	0.5%	28	1.3%	15	0.7%	33	1.5%	2,231	100%
<b>2005</b>	1514	66.3%	694	30.4%	7	0.3%	31	1.4%	15	0.7%	24	1.1%	2,285	100%

# Unduplicated Enrollment by Ethnicity Fall Terms



**Table 9**  
**Class Type Enrollment**

	<b>Fall 2001</b>	<b>Fall 2002</b>	<b>Fall 2003</b>	<b>Fall 2004</b>	<b>Fall 2005</b>
<b>Day Classes</b>	2040	1848	1821	1962	2082
<b>Night Classes</b>	1040	1119	950	1055	1071
<b>Weekend Classes</b>	73	70	99	113	112
<b>On-line Classes</b>	66	57	160	223	290

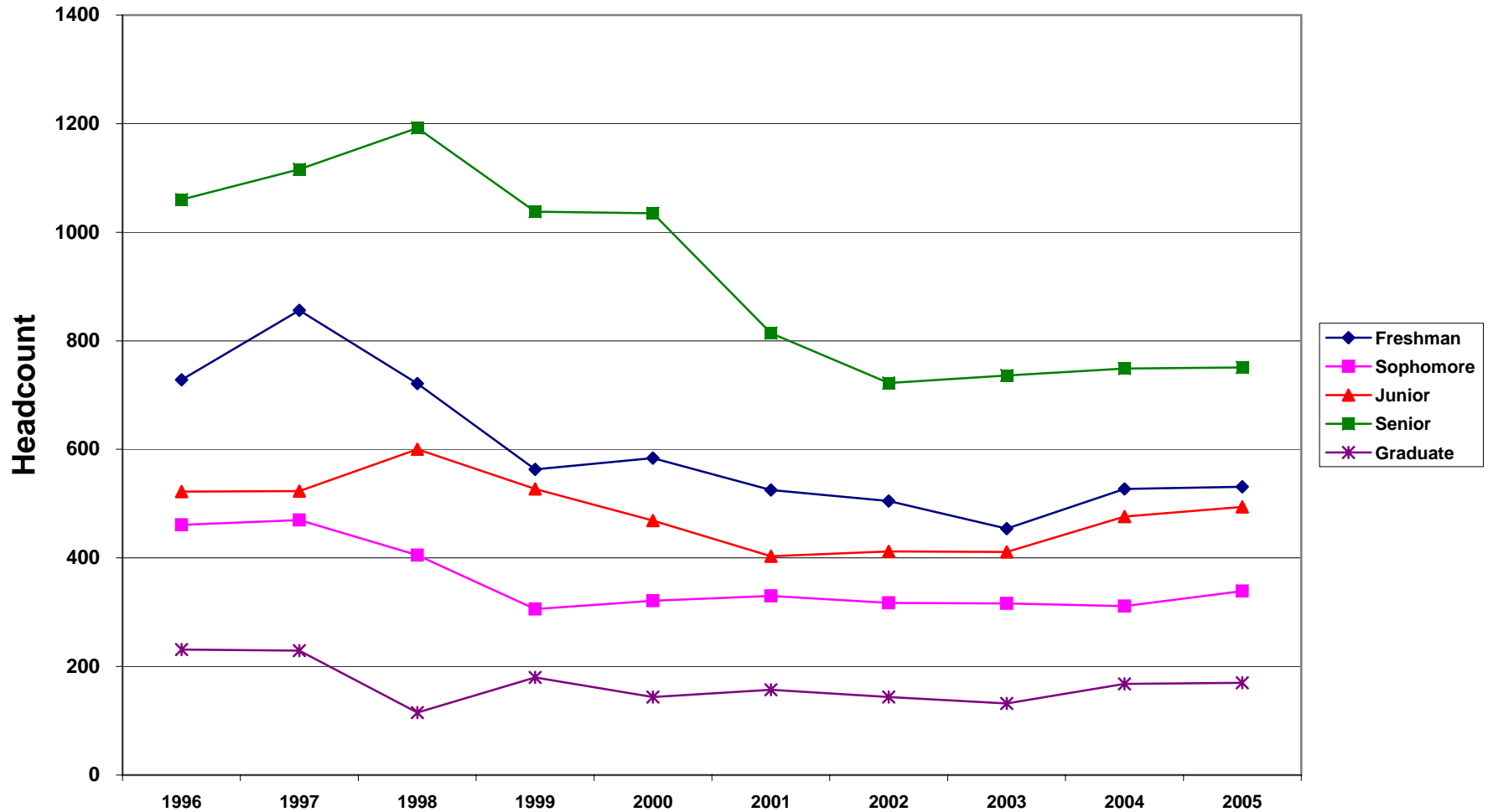
**\*Students may be enrolled in more than one class type,  
but headcount is unduplicated within class type.**



**TABLE 10: Unduplicated Enrollment by Student Classification  
FALL TERMS**

<b>Fall</b>	<b>Freshman</b>	<b>Sophomore</b>	<b>Junior</b>	<b>Senior</b>	<b>Graduate</b>	<b>Total</b>
<b>1996</b>	728	461	522	1060	231	3,002
<b>1997</b>	856	470	523	1116	229	3,194
<b>1998</b>	721	405	600	1192	115	3,033
<b>1999</b>	563	306	527	1038	180	2,614
<b>2000</b>	584	321	469	1035	144	2,553
<b>2001</b>	525	330	403	814	157	2,229
<b>2002</b>	505	317	412	722	144	2,100
<b>2003</b>	454	316	411	736	132	2,049
<b>2004</b>	527	311	476	749	168	2,231
<b>2005</b>	531	339	494	751	170	2,285

# Unduplicated Enrollment by Student Classification Fall Terms



**Table 11: Non-traditional Students Vs. Traditional Students  
Unduplicated Headcount - Fall Terms**

	Non-traditional						Traditional						Both Trad. & Non-trad.
	FT		PT		Total		FT		PT		Total		Total
	HC	%	HC	%	HC	%	HC	%	HC	%	HC	%	
<b>Fall 1996</b>	410	13.66%	991	33.01%	1401	46.67%	1431	47.67%	170	5.66%	1601	53.33%	<b>3002</b>
<b>Fall 1997</b>	454	14.21%	1105	34.60%	1559	48.81%	1418	44.40%	217	6.79%	1635	51.19%	<b>3194</b>
<b>Fall 1998</b>	418	13.78%	977	32.21%	1395	45.99%	1337	44.08%	301	9.92%	1638	54.01%	<b>3033</b>
<b>Fall 1999</b>	401	15.34%	713	27.28%	1114	42.62%	1284	49.12%	216	8.26%	1500	57.38%	<b>2614</b>
<b>Fall 2000</b>	404	15.82%	711	27.85%	1115	43.67%	1213	47.51%	225	8.81%	1438	56.33%	<b>2553</b>
<b>Fall 2001</b>	394	17.68%	584	26.20%	978	43.88%	1160	52.04%	91	4.08%	1251	56.12%	<b>2229</b>
<b>Fall 2002</b>	372	17.71%	368	17.52%	740	35.24%	1183	56.33%	177	8.43%	1360	64.76%	<b>2100</b>
<b>Fall 2003</b>	405	19.77%	321	15.67%	726	35.43%	1178	57.49%	145	7.08%	1323	64.57%	<b>2049</b>
<b>Fall 2004</b>	470	21.07%	381	17.08%	851	38.14%	1210	54.24%	170	7.62%	1380	61.86%	<b>2231</b>
<b>Fall 2005</b>	464	20.31%	357	15.62%	821	35.93%	1281	56.06%	183	8.01%	1464	64.07%	<b>2285</b>

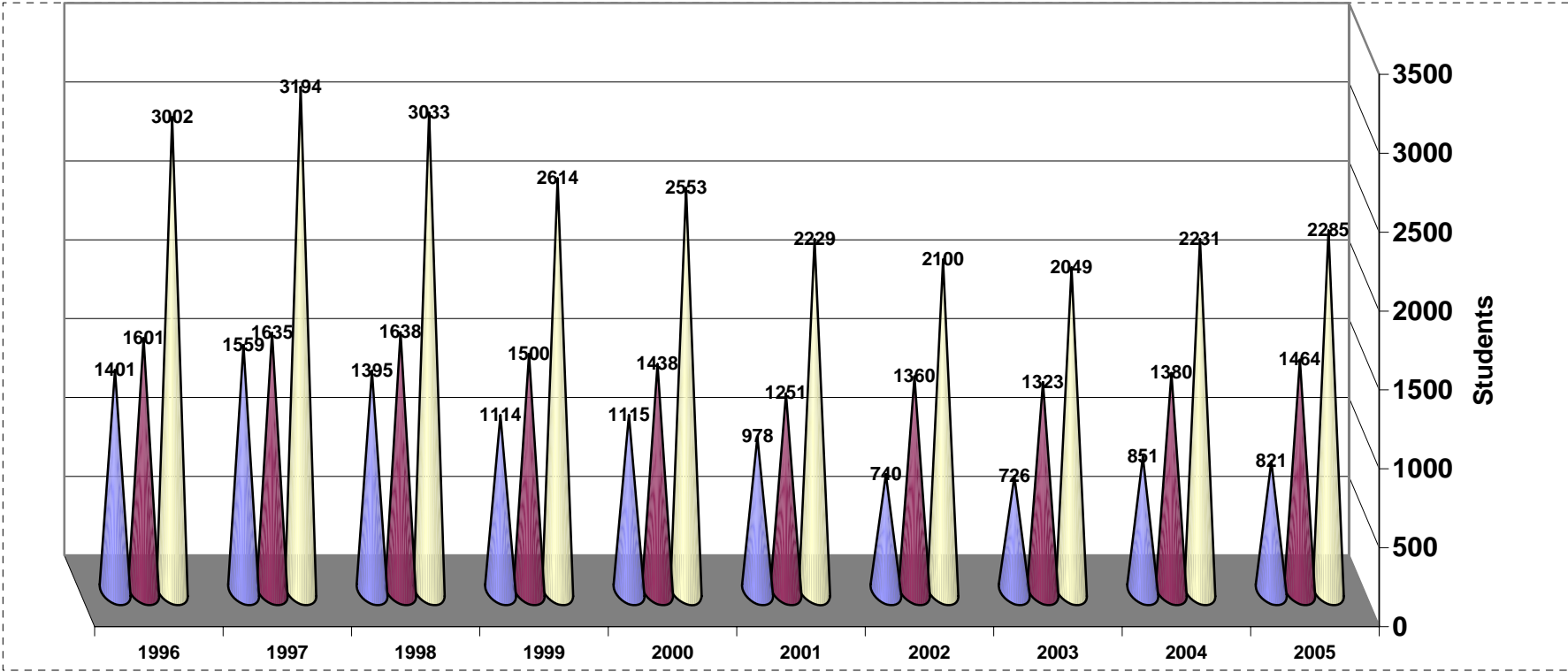
\*Non-traditional Students are defined as those who are at least 25 years of age.

\*\*HC = Headcount

\*\*\* Part-time is defined as UG enrolled 11 Cr. hrs or less or GR enrolled 8 Cr. Hrs or less

\*\*\*\*Full-time is defined as UG enrolled 12 Cr. Hrs or more or GR enrolled 9 Cr. Hrs or more.

# Non-traditional Vs. Traditional Students Unduplicated Headcount - Fall Terms

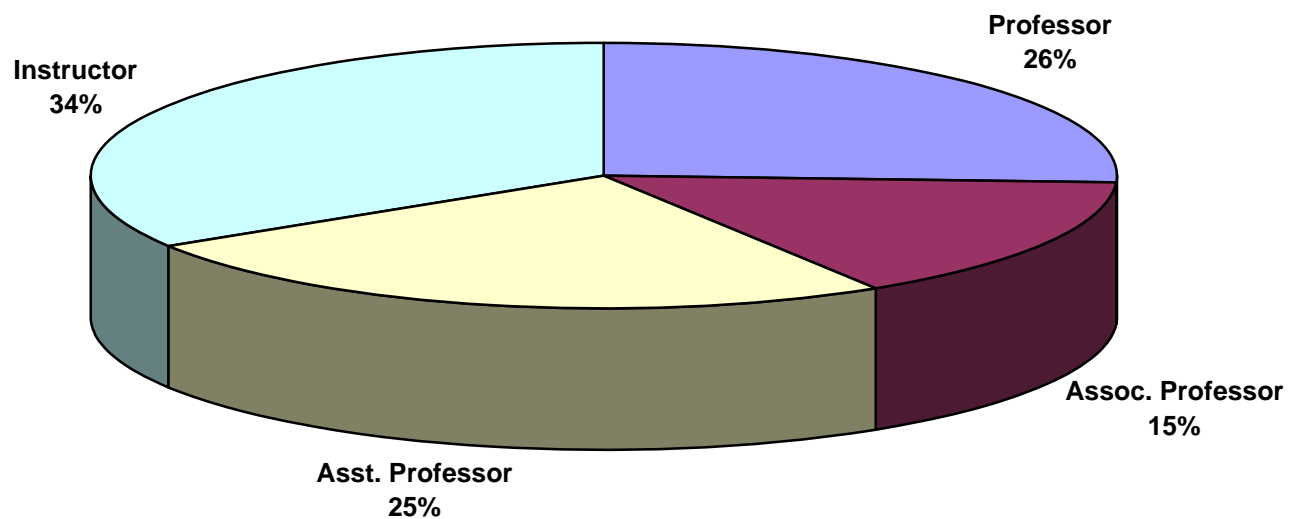


**TABLE 12: Faculty Profile**

Fall Sem.	Number				Full-time Faculty by Rank				Full-time Faculty by Degree				F-T Fac by Sex		F-T Fac by Race			F-T Fac Contract	
	Ft-Time	Admin.	Pt-Time	Total	Prof.	Asso.	Asst.	Inst.	Terminal	SPEC.	MSTR.	BACH.	Male	Female	Black	White	Other	ACAD	FISCAL
1990	97	6	42	145	41	6	34	16	57	0	39	1	36	61	3	93	1	80	17
1991	104	6	45	155	43	4	35	22	57	0	42	5	38	66	3	101	0	85	19
1992	110	5	47	162	36	7	38	29	57	1	52	0	42	68	2	105	3	87	23
1993	112	5	52	169	33	5	45	29	62	2	48	0	42	70	3	108	1	88	24
1994	116	5	56	177	33	9	46	28	64	1	50	1	43	73	4	108	4	91	25
1995	120	5	63	188	31	11	53	25	73	1	45	1	49	71	6	111	3	95	25
1996	121	4	68	193	27	15	54	25	71	2	46	2	51	70	5	113	3	100	21
1997	128	4	69	201	27	18	61	22	81	2	44	1	50	78	3	120	5	105	23
1998	129	4	77	210	26	21	58	24	88	0	40	1	47	82	1	123	5	104	25
1999	132	4	80	216	28	22	55	27	92	0	40	0	52	80	2	128	2	105	27
2000	139	4	81	224	31	29	53	26	99	0	40	0	54	85	3	132	4	117	22
2001	134	4	80	218	31	27	44	32	93	0	40	1	53	81	6	123	5	103	31
2002	129	4	79	212	32	28	40	29	89	0	40	0	49	80	7	118	4	99	30
2003	131	5	61	197	33	23	36	39	85	0	46	0	48	83	5	123	3	104	27
2004	133	5	46	184	33	21	35	44	80	0	53	0	50	83	4	125	4	106	27
2005	136	5	66	207	35	21	34	46	81	0	53	2	50	86	4	127	5	110	26

**SOURCE: Office of Academic Affairs**

## Full-time Faculty Profile - Fall 2005



Total number of full-time faculty = 136

**Table 13: Unduplicated Headcount Enrollment by Credit Hours and Student Classification**

*Fall 2001*

<i>Sem Hrs</i>	<i>FR</i>	<i>SO</i>	<i>JR</i>	<i>SR</i>	<i>GR</i>	<i>Total</i>	<i>%</i>	<i>Cum%</i>
1	104	1	1	65	0	171	7.7%	7.7%
2	28	1	0	11	7	47	2.1%	9.8%
3	41	8	9	47	36	141	6.3%	16.1%
4	8	3	0	6	0	17	0.8%	16.9%
5	2	0	0	4	0	6	0.3%	17.1%
6	18	16	16	62	43	155	7.0%	24.1%
7	4	4	5	10	1	24	1.1%	25.2%
8	1	2	1	5	0	9	0.4%	25.6%
9	7	18	14	37	24	100	4.5%	30.1%
10	1	3	4	12	3	23	1.0%	31.1%
11	2	0	3	4	9	18	0.8%	31.9%
12	28	50	54	119	8	259	11.6%	43.5%
13	31	20	21	28	25	125	5.6%	49.1%
14	12	11	7	10	0	40	1.8%	50.9%
15	90	75	130	206	1	502	22.5%	73.4%
16	61	39	46	52	0	198	8.9%	82.3%
17	57	32	21	21	0	131	5.9%	88.2%
18	24	28	45	80	0	177	7.9%	96.1%
19	5	15	18	24	0	62	2.8%	98.9%
20	1	2	5	2	0	10	0.4%	99.4%
21	0	1	3	4	0	8	0.4%	99.7%
22	0	1	0	3	0	4	0.2%	99.9%
23	0	0	0	1	0	1	0.0%	100.0%
25	0	0	0	1	0	1	0.0%	100.0%
<b>Total</b>	<b>525</b>	<b>330</b>	<b>403</b>	<b>814</b>	<b>157</b>	<b>2229</b>		

**Table 13: Unduplicated Headcount Enrollment by Credit Hours and Student Classification**

*Fall 2002*

<i>Sem Hrs</i>	<i>FR</i>	<i>SO</i>	<i>JR</i>	<i>SR</i>	<i>GR</i>	<i>Total</i>	<i>%</i>	<i>Cum%</i>
0	0	0	0	1	0	1	0.0%	0.0%
1	16	0	0	24	0	40	1.9%	2.0%
2	4	0	2	2	8	16	0.8%	2.7%
3	76	5	8	38	25	152	7.2%	10.0%
4	6	7	1	8	0	22	1.0%	11.0%
5	0	0	1	1	0	2	0.1%	11.1%
6	54	14	23	48	50	189	9.0%	20.1%
7	4	1	0	8	0	13	0.6%	20.7%
8	1	3	2	3	0	9	0.4%	21.1%
9	6	11	22	38	19	96	4.6%	25.7%
10	2	4	2	5	1	14	0.7%	26.4%
11	2	1	3	5	14	25	1.2%	27.6%
12	29	38	66	103	8	244	11.6%	39.2%
13	20	25	26	32	19	122	5.8%	45.0%
14	19	6	7	16	0	48	2.3%	47.3%
15	102	79	109	216	0	506	24.1%	71.4%
16	58	49	48	58	0	213	10.1%	81.5%
17	73	29	23	28	0	153	7.3%	88.8%
18	26	21	43	58	0	148	7.0%	95.9%
19	7	22	17	15	0	61	2.9%	98.8%
20	0	2	6	6	0	14	0.7%	99.4%
21	0	0	2	5	0	7	0.3%	99.8%
22	0	0	0	1	0	1	0.0%	99.8%
23	0	0	1	2	0	3	0.1%	100.0%
28	0	0	0	1	0	1	0.0%	100.0%
<b>Total</b>	505	317	412	722	144	2100		



**Table 13: Unduplicated Headcount Enrollment by Credit Hours and Student Classification**

*Fall 2003*

<i>Sem Hrs</i>	<i>FR</i>	<i>SO</i>	<i>JR</i>	<i>SR</i>	<i>GR</i>	<i>Total</i>	<i>%</i>	<i>Cum%</i>
1	5	1	0	11	9	26	1.3%	1.3%
2	2	0	0	2	0	4	0.2%	1.5%
3	56	7	0	44	29	136	6.6%	8.1%
4	4	2	4	7	0	17	0.8%	8.9%
5	2	0	1	4	0	7	0.3%	9.3%
6	55	10	18	44	37	164	8.0%	17.3%
7	4	2	2	14	1	23	1.1%	18.4%
8	1	1	1	4	0	7	0.3%	18.7%
9	5	8	12	22	12	59	2.9%	21.6%
10	4	0	7	12	0	23	1.1%	22.7%
11	2	2	1	6	0	11	0.5%	23.3%
12	37	51	58	124	11	281	13.7%	37.0%
13	25	26	42	42	31	166	8.1%	45.1%
14	30	11	18	12	0	71	3.5%	48.6%
15	85	70	122	150	1	428	20.9%	69.4%
16	67	47	44	98	1	257	12.5%	82.0%
17	50	30	19	19	0	118	5.8%	87.8%
18	20	25	39	62	0	146	7.1%	94.9%
19	0	20	14	46	0	80	3.9%	98.8%
20	0	3	7	4	0	14	0.7%	99.5%
21	0	0	2	3	0	5	0.2%	99.7%
22	0	0	0	6	0	6	0.3%	100.0%
<b>Total</b>	<b>454</b>	<b>316</b>	<b>411</b>	<b>736</b>	<b>132</b>	<b>2049</b>		

**Table 13: Unduplicated Headcount Enrollment by Credit Hours and Student Classification**

*Fall 2004*

<i>Sem Hrs</i>	<i>FR</i>	<i>SO</i>	<i>JR</i>	<i>SR</i>	<i>GR</i>	<i>Total</i>	<i>%</i>	<i>Cum%</i>
1	3	0	1	19	0	23	1.0%	1.0%
2	2	0	0	5	0	7	0.3%	1.3%
3	85	7	10	49	43	194	8.7%	10.0%
4	7	3	4	4	4	22	1.0%	11.0%
5	4	0	1	2	0	7	0.3%	11.3%
6	18	7	25	63	49	162	7.3%	18.6%
7	7	3	5	13	0	28	1.3%	19.9%
8	1	1	1	3	1	7	0.3%	20.2%
9	3	8	13	24	12	60	2.7%	22.9%
10	7	7	8	19	6	47	2.1%	25.0%
11	2	4	4	2	0	12	0.5%	25.5%
12	51	52	92	120	18	333	14.9%	40.4%
13	46	29	32	52	28	187	8.4%	48.8%
14	36	22	17	16	2	93	4.2%	53.0%
15	73	65	130	162	1	431	19.3%	72.3%
16	85	50	50	81	0	266	11.9%	84.2%
17	55	25	19	22	4	125	5.6%	89.8%
18	26	18	45	48	0	137	6.1%	96.0%
19	15	9	16	31	0	71	3.2%	99.1%
20	1	0	1	3	0	5	0.2%	99.4%
21	0	1	2	10	0	13	0.6%	100.0%
22	0	0	0	1	0	1	0.0%	100.0%
<b>Total</b>	527	311	476	749	168	2231		

**Table 13: Unduplicated Headcount Enrollment by Credit Hours and Student Classification**

*Fall 2005*

<i>Sem Hrs</i>	<i>FR</i>	<i>SO</i>	<i>JR</i>	<i>SR</i>	<i>GR</i>	<i>Total</i>	<i>%</i>	<i>Cum%</i>
1	4	1	1	20	1	27	1.2%	1.2%
2	2	0	0	5	0	7	0.3%	1.5%
3	85	5	4	41	24	159	7.0%	8.4%
4	10	1	2	13	1	27	1.2%	9.6%
5	1	0	1	3	0	5	0.2%	9.8%
6	35	10	19	56	62	182	8.0%	17.8%
7	7	3	8	14	4	36	1.6%	19.4%
8	2	2	1	7	1	13	0.6%	20.0%
9	4	6	8	27	10	55	2.4%	22.4%
10	3	4	3	14	2	26	1.1%	23.5%
11	1	2	5	7	1	16	0.7%	24.2%
12	47	55	85	156	20	363	15.9%	40.1%
13	49	30	53	58	5	195	8.5%	48.6%
14	35	34	17	15	27	128	5.6%	54.2%
15	87	53	141	114	4	399	17.5%	71.7%
16	73	51	50	93	0	267	11.7%	83.4%
17	55	37	22	32	0	146	6.4%	89.8%
18	27	26	49	44	8	154	6.7%	96.5%
19	4	16	22	25	0	67	2.9%	99.4%
20	0	3	2	3	0	8	0.4%	99.8%
21	0	0	1	2	0	3	0.1%	99.9%
22	0	0	0	1	0	1	0.0%	100.0%
23	0	0	0	1	0	1	0.0%	100.0%
<b>Total</b>	531	339	494	751	170	2285		

**Table 14: Age Distribution by Student Classification  
Unduplicated Headcount**

Age Group	Freshman		Sophomore		Junior		Senior		Graduate		Total	
	FA 2005	FA 2004	FA 2005	FA 2004	FA 2005	FA 2004	FA 2005	FA 2004	FA 2005	FA 2004	FA 2005	FA 2004
<b>Under 18</b>	104	58	1	1	0	0	0	0	0	0	105	59
<b>18 and 19</b>	277	290	117	55	10	5	1	0	0	0	405	350
<b>20 and 21</b>	36	64	117	132	239	203	162	103	1	1	555	503
<b>22 to 24</b>	23	28	26	44	92	94	224	278	34	24	399	468
<b>25 to 29</b>	31	30	34	28	49	71	118	144	46	39	278	312
<b>30 to 34</b>	18	13	16	31	42	46	80	71	35	27	191	188
<b>35 to 39</b>	15	9	6	7	25	22	51	54	19	26	116	118
<b>40 to 49</b>	13	23	16	10	31	26	69	65	31	39	160	163
<b>50 to 64</b>	9	8	6	3	6	9	42	32	4	12	67	64
<b>65 and Over</b>	5	4	0	0	0	0	4	2	0	0	9	6
<b>Unknown</b>	0	0	0	0	0	0	0	0	0	0	0	0
<b>Total</b>	<b>531</b>	<b>527</b>	<b>339</b>	<b>311</b>	<b>494</b>	<b>476</b>	<b>751</b>	<b>749</b>	<b>170</b>	<b>168</b>	<b>2,285</b>	<b>2,231</b>

	Fall 2005	Fall 2004
Average Age	25.7	26.1
Average Age Men	25.5	25.4
Average Age Women	25.8	26.2

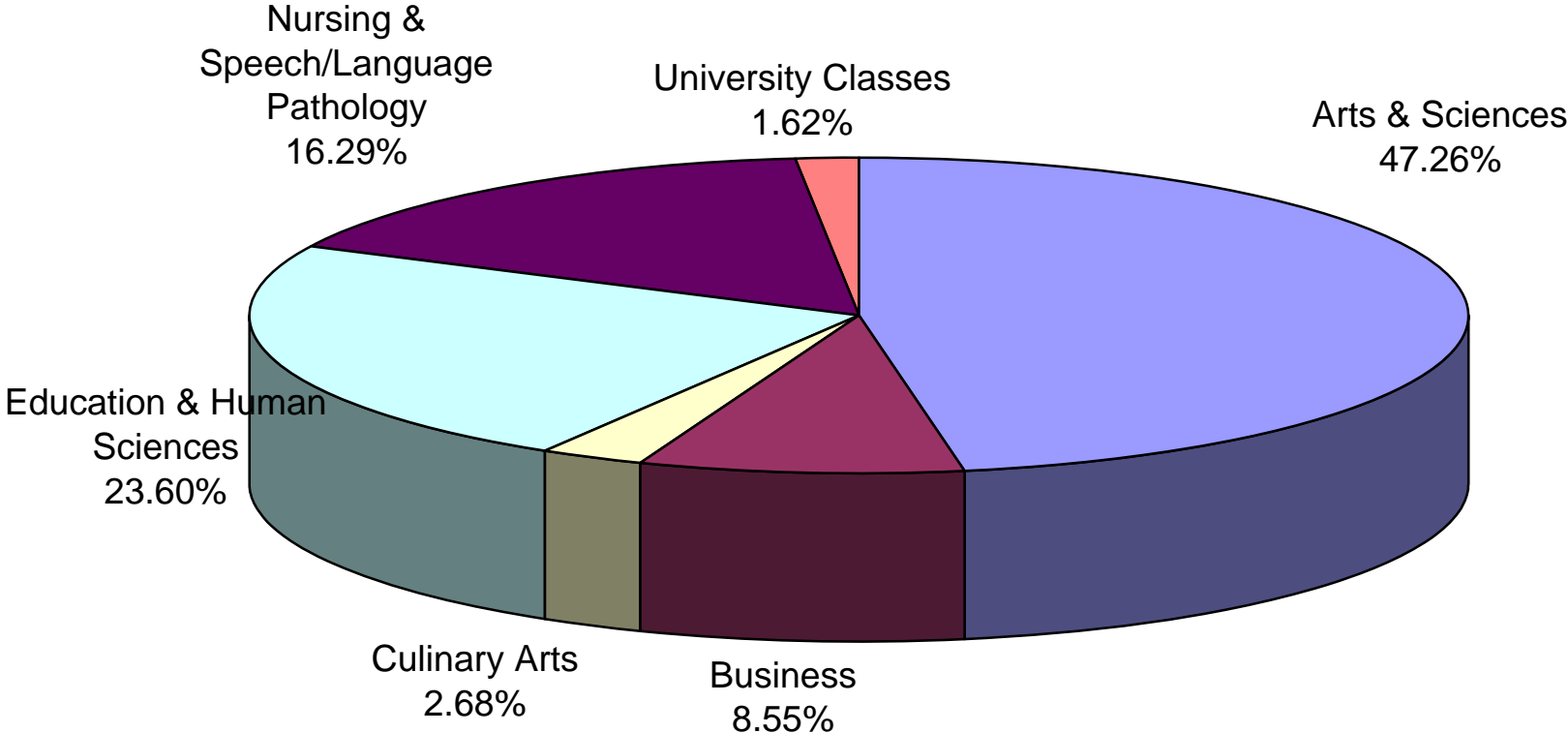
**Table 15: Credit Hour Generation by College & Department**

Program	Su 03	Fall 03	Spring 04	03-04 Total	Su 04	Fall 04	Spring 05	04-05 Total	SU 05	FA 05	SP 06	05-06 Total
<b>Art &amp; Design</b>	42	1233	1338	2613	102	1233	1176	2511	12	1221	1095	2328
<b>Communication</b>	135	971	923	2029	193	1019	958	2170	189	852	693	1734
<b>History, Political Science, Geography, &amp; Paralegal</b>	474	1905	2031	4410	501	2193	2385	5079	683	2481	2262	5426
<b>Honors</b>	309	136	130	575	353	115	107	575	392	142	138	672
<b>Languages, Literature, &amp; Philosophy</b>	1013	3132	3108	7253	1094	3159	3074	7327	1018	3441	3369	7828
<b>Music &amp; Theatre</b>	98	785	860	1743	120	796	882	1798	56	803	806	1665
<b>Science &amp; Mathematics</b>	818	3628	3922	8368	842	4162	4166	9170	1085	4168	3763	9016
<b>Arts &amp; Sciences College Total</b>	<b>2889</b>	<b>11790</b>	<b>12312</b>	<b>26991</b>	<b>3205</b>	<b>12677</b>	<b>12748</b>	<b>28630</b>	<b>3435</b>	<b>13108</b>	<b>12126</b>	<b>28669</b>
<b>Accounting &amp; MIS</b>	66	1239	896	2201	186	1107	1212	2505	306	1236	1239	2781
<b>Business Administration</b>	249	1275	1209	2733	249	1089	1047	2385	201	1134	1206	2541
<b>Business College Total</b>	<b>315</b>	<b>2514</b>	<b>2105</b>	<b>4934</b>	<b>435</b>	<b>2196</b>	<b>2259</b>	<b>4890</b>	<b>507</b>	<b>2370</b>	<b>2445</b>	<b>5322</b>
<b>Culinary Arts Total</b>	<b>72</b>	<b>585</b>	<b>702</b>	<b>1359</b>	<b>151</b>	<b>728</b>	<b>709</b>	<b>1588</b>	<b>193</b>	<b>744</b>	<b>875</b>	<b>1812</b>
<b>Education</b>	630	2,337	2,154	5121	618	2,457	2,547	5622	765	2514	2277	5556
<b>Health &amp; Kinesiology</b>	247	1,138	1,238	2623	141	1,198	1,155	2494	260	1300	1399	2959
<b>Health Education</b>	45	66	138	249	298	189	231	718	195	219	194	608
<b>Psychology &amp; Family Studies</b>	574	2,244	2,322	5140	618	2,413	2,675	5706	601	2511	2700	5812
<b>Education &amp; Human Sciences College Total</b>	<b>1496</b>	<b>5785</b>	<b>5852</b>	<b>13133</b>	<b>1675</b>	<b>6257</b>	<b>6608</b>	<b>14540</b>	<b>1821</b>	<b>6544</b>	<b>6570</b>	<b>14935</b>

<b>Associate of Science in Nursing</b>	109	1,197	1,111	2417	102	1,115	1,082	2299	63	1039	1071	2173
<b>Bachelor of Science in Nursing</b>	627	1,848	1,850	4325	847	2,166	1,796	4809	1020	2041	1917	4978
<b>Master of Science in Nursing</b>	391	407	392	1190	305	484	540	1329	521	550	615	1686
<b>Nursing</b>	17	253	46	316	85	109	4	198	100	166	128	394
<b>Speech/Language Pathology</b>	79	565	526	1170	115	667	538	1320	134	721	507	1362
<b>Nursing &amp; Speech/Language Pathology College Total</b>	<b>1223</b>	<b>4270</b>	<b>3925</b>	<b>9418</b>	<b>1454</b>	<b>4541</b>	<b>3960</b>	<b>9955</b>	<b>1838</b>	<b>4517</b>	<b>4238</b>	<b>10593</b>
<b>University Classes</b>	<b>2</b>	<b>334</b>	<b>103</b>	<b>439</b>	<b>18</b>	<b>475</b>	<b>203</b>	<b>696</b>	<b>15</b>	<b>450</b>	<b>207</b>	<b>672</b>
<b>Totals</b>	<b>5997</b>	<b>25278</b>	<b>24999</b>	<b>56274</b>	<b>6938</b>	<b>26874</b>	<b>26487</b>	<b>60,299</b>	<b>7809</b>	<b>27733</b>	<b>26461</b>	<b>62003</b>

\*ROTC Classes are excluded

# CREDIT HOUR GENERATION BY COLLEGE - Fall 2005



**Table 16: Enrollment by Major and Program Type  
Unduplicated Count of Registered Students - Fall 2001-2005**

	2001	2002	2003	2004	2005	5 Year	5 Year
	Total	Total	Total	Total	Total	# Change	%Change
<b>Arts &amp; Sciences</b>	475	466	451	504	482	7	1.47%
3D Design	4	0	0	0	0	-4	-100.00%
Art Education	10	16	17	19	19	9	90.00%
Biology	49	48	45	66	74	25	51.02%
Biology-Teacher Certificaiton	10	6	7	6	6	-4	-40.00%
Broadcast Journalism	1	0	0	0	0	-1	-100.00%
Broadcasting	11	4	3	0	0	-11	-100.00%
Chemistry	17	12	14	10	11	-6	-35.29%
Communication	0	16	42	72	48	48	NA
Communication - Broadcasting	10	16	8	1	0	-10	-100.00%
Communication - Journalism	8	6	2	0	0	-8	-100.00%
Communication-Public Relations	37	31	6	0	0	-37	-100.00%
Drawing & Painting	3	3	0	0	0	-3	-100.00%
English	39	41	27	32	39	0	0.00%
English - Creative Writing	1	1	7	2	1	0	0.00%
English-Teacher Certification	14	20	19	22	16	2	14.29%
Fine Art	12	15	12	4	4	-8	-66.67%
Graphic Design	27	22	17	19	18	-9	-33.33%
History	16	15	22	16	20	4	25.00%
History-Teacher Certification	6	6	6	8	8	2	33.33%
Interior Design	31	28	34	29	24	-7	-22.58%
Journalism	2	2	1	0	0	-2	-100.00%
Mathematics	14	17	16	19	15	1	7.14%
Mathematics - Teacher Cert	9	9	5	13	10	1	11.11%
Microbiology	26	15	11	13	13	-13	-50.00%
Music	5	6	5	3	3	-2	-40.00%
Music - Commercial	3	3	4	3	0	-3	-100.00%
Music Education	11	9	11	8	10	-1	-9.09%
Music Therapy	0	5	11	10	10	10	NA
Paralegal Studies	49	43	47	53	56	7	14.29%
Physical Science	7	5	1	1	0	-7	-100.00%
Physical Science-Teacher Cert	2	2	2	1	1	-1	-50.00%
Political Science	10	15	17	16	20	10	100.00%



	2001	2002	2003	2004	2005	5 Year	5 Year
	Total	Total	Total	Total	Total	# Change	%Change
Social Sciences	9	5	6	15	12	3	33.33%
Social Sciences - Teacher Cert	11	9	9	14	14	3	27.27%
Spanish	7	3	2	4	4	-3	-42.86%
Spanish - Teaching	0	0	0	1	0	0	NA
Studio Art	1	8	11	16	13	12	1200.00%
Theatre	3	4	4	8	13	10	333.33%

<i>Business</i>	277	250	216	220	214	-63	-22.74%
Accounting	71	69	59	71	76	5	7.04%
Business Admin - General Bus	51	50	32	42	38	-13	-25.49%
Business Admin - IRM	0	3	3	1	0	0	NA
Business Admin - Management	39	34	30	35	34	-5	-12.82%
Business Admin - Marketing	31	28	34	25	27	-4	-12.90%
Business Admin - MIS	67	61	55	45	39	-28	-41.79%
Business Admin - Office Admin	14	4	2	1	0	-14	-100.00%
Fashion Merchandising	4	1	1	0	0	-4	-100.00%

<i>Culinary Arts</i>	50	59	64	75	96	46	92.00%
Culinary Arts	50	59	60	72	96	46	92.00%
Culinary Arts Certificate	0	0	4	3	0	0	NA

<i>Education &amp; Human Sciences</i>	579	554	507	564	601	22	3.80%
Alternate Route	1	0	0	0	0	-1	-100.00%
Differentiated Instruction	0	0	0	1	8	8	NA
Education - MAT	22	28	16	15	23	1	4.55%
Elementary Education	268	261	246	248	269	1	0.37%
Exercise Sci-Physical Therapy	8	10	4	19	24	16	200.00%
Family & Human Development	3	0	0	0	0	-3	-100.00%
Family Studies	68	68	74	77	86	18	26.47%
Family Studies - Teaching	3	6	8	4	5	2	66.67%
Gifted Studies	21	17	8	7	10	-11	-52.38%
Health Education	8	8	12	40	37	29	362.50%
Instructional Management	26	13	11	9	2	-24	-92.31%
Kinesiology - Recreation	6	2	0	0	0	-6	-100.00%
Kinesiology - Sport Management	1	6	3	6	9	8	800.00%
Kinesiology - Teaching	18	12	7	5	4	-14	-77.78%

	2001	2002	2003	2004	2005	5 Year	5 Year
	Total	Total	Total	Total	Total	# Change	%Change
Kinesiology-Athletic Training	3	1	0	0	0	-3	-100.00%
Kinesiology-Exercise Science	23	28	25	28	22	-1	-4.35%
Physical Therapy	2	1	0	0	0	-2	-100.00%
Pre-Occupational Therapy	2	3	4	3	6	4	200.00%
Psychology	87	79	76	75	78	-9	-10.34%
Reading/Literacy	9	11	13	27	18	9	100.00%

<i>Nursing &amp; Speech Language Pathology</i>	421	478	475	550	583	162	38.48%
Associate of Science Nursing	91	68	122	121	114	23	25.27%
Bachelor of Science Nursing	10	43	98	103	107	97	970.00%
Family Nurse Clinician - MSN	11	1	0	0	0	-11	-100.00%
Nursing - BSN - Tupelo	3	0	27	39	37	34	1133.33%
Pre-Nursing ASN	37	77	53	70	72	35	94.59%
Pre-Nursing BSN	184	167	83	116	131	-53	-28.80%
Pre-Nursing BSN - Tupelo	0	22	2	1	4	4	NA
Primary Care Family	24	40	35	39	43	19	79.17%
Speech/Language Pathology	30	34	34	35	47	17	56.67%
Speech/Language Pathology - MS	31	26	21	26	28	-3	-9.68%

<i>University</i>	427	293	336	318	309	-118	-27.63%
Unclassified - Graduate	3	0	17	4	1	-2	-66.67%
Undeclared	0	0	2	1	0	0	NA
Undeclared - Undergraduate	424	293	317	313	308	-116	-27.36%
<i>University Total</i>	2229	2100	2049	2231	2285	56	2.51%

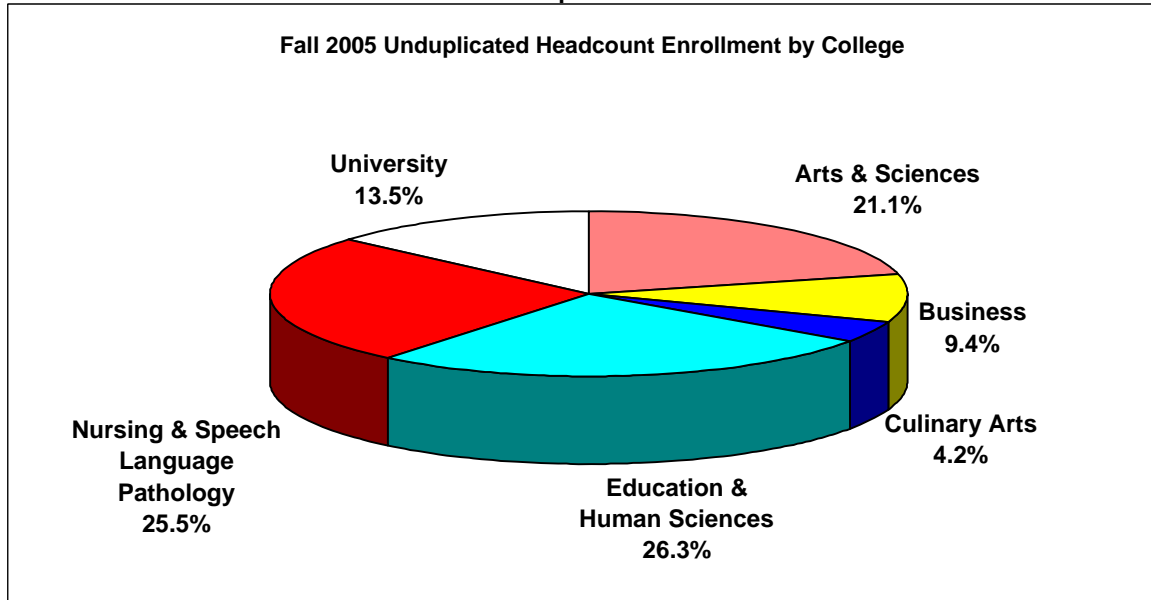
**\*\*\*\*In 2001 and 2002 the student information file was archived before students were moved from Pre-Nursing BSN and Pre-Nursing BSN Tupelo to their respective BSN programs. This caused a low count for these 2 years in the BSN programs.**

## Table 17: Unduplicated Headcount Enrollment by College

Fall 2003 - Fall 2005

College	Fall 2003		Fall 2004		Fall 2005	
	# Students	% of Total	# Students	% of Total	# Students	% of Total
Arts & Sciences	452	22.06%	504	22.59%	482	21.09%
Business	215	10.49%	220	9.86%	214	9.37%
Culinary Arts	64	3.12%	75	3.36%	96	4.20%
Education & Human Sciences	507	24.74%	564	25.28%	601	26.30%
Nursing & Speech Language Pathology	475	23.18%	550	24.65%	583	25.51%
University	336	16.40%	318	14.25%	309	13.52%
<b>Total</b>	<b>2049</b>	<b>100%</b>	<b>2231</b>	<b>100%</b>	<b>2285</b>	<b>100%</b>

Note: Headcount Enrollment Numbers are Unduplicated



**Table 18: Faculty Credit Hour Production by Course Level**

<b>Fall 2004 Faculty Terminal Degrees and Student Credit Hours</b>				
	<b>Lower CH</b>	<b>Upper CH</b>	<b>Graduate CH</b>	<b>Total CH</b>
<b>Terminal Degrees</b>	8,413	6,460	953	15,826
<b>Non-Terminal Degrees</b>	6,746	4,011	303	11,060
<b>TOTAL</b>	<b>15,159</b>	<b>10,471</b>	<b>1,256</b>	<b>26,886</b>

<b>Fall 2005 Faculty Terminal Degrees and Student Credit Hours</b>				
	<b>Lower CH</b>	<b>Upper CH</b>	<b>Graduate CH</b>	<b>Total CH</b>
<b>Terminal Degrees</b>	8,585	6,499	1,055	16,139
<b>Non-Terminal Degrees</b>	6,812	4,452	330	11,594
	<b>15,397</b>	<b>10,951</b>	<b>1,385</b>	<b>27,733</b>

<b>Fall 2004 Faculty Full-time/Part-time Status and Student Credit Hours</b>				
	<b>Lower CH</b>	<b>Upper CH</b>	<b>Graduate CH</b>	<b>Total CH</b>
<b>Full-time Faculty</b>	11,878	8,795	1,189	21,862
<b>Part-time Faculty</b>	3,281	1,676	67	5,024
<b>TOTAL</b>	<b>15,159</b>	<b>10,471</b>	<b>1,256</b>	<b>26,886</b>

<b>Fall 2005 Faculty Full-time/Part-time Status and Student Credit Hours</b>				
	<b>Lower CH</b>	<b>Upper CH</b>	<b>Graduate CH</b>	<b>Total CH</b>
<b>Full-time Faculty</b>	12,644	9,398	1,141	23,183
<b>Part-time Faculty</b>	2,753	1,553	244	4,550
	<b>15,397</b>	<b>10,951</b>	<b>1,385</b>	<b>27,733</b>

**Note:** For this profile, both Full-time and Part-time faculty are included.

**Table 19: Unduplicated Enrollment by State of Residence  
Fall 2001-2005**

<i>State</i>	<i>2001</i>	<i>2002</i>	<i>2003</i>	<i>2004</i>	<i>2005</i>
Alabama	139	157	122	127	135
Arizona	2	0	0	0	0
Arkansas	3	3	3	5	6
California	0	0	1	1	2
Colorado	1	3	1	0	0
Connecticut	0	0	0	0	1
Delaware	0	0	0	0	1
Florida	4	7	4	4	4
Georgia	4	3	5	4	6
Idaho	2	0	0	0	0
Illinois	1	0	0	2	1
Indiana	1	0	1	1	0
Kansas	2	0	0	1	1
Kentucky	10	1	3	4	3
Louisiana	3	10	6	11	11
Michigan	0	1	1	0	0
Minnesota	2	0	0	0	0
Mississippi	2038	1817	1830	1998	2043
Missouri	3	3	3	3	2
New Hampshire	0	0	0	1	0
New Jersey	0	0	0	0	2
New Mexico	2	2	1	1	1
New York	0	0	1	0	0
North Carolina	1	1	1	1	0
Ohio	2	0	0	3	2
Oklahoma	1	1	0	1	3
South Carolina	0	0	0	0	2
South Dakota	18	0	0	0	0
Tennessee	23	36	29	19	23
Texas	4	8	4	7	7
Utah	1	0	0	0	0
Vermont	3	0	0	0	0
Virginia	0	2	1	3	1
Washington	0	0	2	1	0
Washington DC	5	0	0	0	0
Wisconsin	0	1	0	2	1
<b>Total U.S. Enrollment</b>	<b>2275</b>	<b>2056</b>	<b>2019</b>	<b>2200</b>	<b>2258</b>

The Student Information File (SIF) files sent to IHL are used for all of the residency tables (Tables 19-21), thus total unduplicated residency headcount in fall 2001 will differ from the majority of tables in the Fact Book. The SIF file for 2001 has a higher headcount (2323) due to continuing education workshop students who were added after the Day 10 headcount. Tables 19 -21 also will not include residence codes for two of the fall 2001 students whose residence codes were blank on the SIF.

**Table 19A: Enrollment by State of Residence and Classification  
Fall 2005**

<i>State</i>	<i>Freshmen</i>	<i>Sophomore</i>	<i>Junior</i>	<i>Senior</i>	<i>Graduate</i>	<i>Total</i>
Alabama	34	25	22	48	6	135
Arkansas	3	0	1	2	0	6
California	0	1	0	1	0	2
Connecticut	0	1	0	0	0	1
Delaware	1	0	0	0	0	1
Florida	1	0	1	2	0	4
Georgia	1	1	1	2	1	6
Illinois	0	0	0	1	0	1
Kansas	1	0	0	0	0	1
Kentucky	0	1	0	2	0	3
Louisiana	0	1	3	2	5	11
Mississippi	453	298	457	682	153	2043
Missouri	1	1	0	0	0	2
New Jersey	0	2	0	0	0	2
New Mexico	0	0	1	0	0	1
Ohio	1	1	0	0	0	2
Oklahoma	0	0	1	2	0	3
South Carolina	0	0	1	1	0	2
Tennessee	7	6	2	5	3	23
Texas	1	0	2	3	1	7
Virginia	0	0	0	1	0	1
Wisconsin	0	0	1	0	0	1
<b><i>Total</i></b>	<b>504</b>	<b>338</b>	<b>493</b>	<b>754</b>	<b>169</b>	<b>2258</b>
<b><i>Percent of total</i></b>	<b>22.32%</b>	<b>14.97%</b>	<b>21.83%</b>	<b>33.39%</b>	<b>7.48%</b>	

**Table 20: Unduplicated Headcount Enrollment by Country  
Fall 2001-2005**

<i>Country</i>	<i>2001</i>	<i>2002</i>	<i>2003</i>	<i>2004</i>	<i>2005</i>
Albania	0	0	1	1	0
Australia	0	1	0	0	0
Barbados	1	1	0	0	0
Bulgaria	2	2	1	1	2
Cameroon	0	1	0	0	0
Canada	1	0	0	0	0
China	1	0	1	1	1
Croatia	0	1	0	0	0
Ecuador	0	0	1	0	0
Finland	1	1	0	0	0
France	0	0	0	0	1
Germany	1	2	0	1	1
Ghana	3	2	2	1	0
Honduras	2	2	1	1	1
India	0	1	0	0	1
Indonesia	1	2	0	0	0
Jamaica	0	0	0	1	1
Japan	1	1	0	1	1
Jordan	1	0	0	0	0
Kazakhstan	1	1	1	0	0
Kenya	14	13	8	7	3
Korea, South	0	0	0	0	1
Malaysia	2	1	0	0	0
Moldova	0	1	0	0	0
Nigeria	4	1	2	5	4
Peru	0	0	0	1	1
Romania	2	1	3	3	3
Russia	2	0	1	1	0
Saudi Arabia	1	0	0	0	0
Senegal	0	1	0	0	0
Taiwan	0	1	2	2	1
Trinidad and Tobago	1	1	1	0	1
Uganda	1	0	0	0	0
Ukraine	2	2	2	2	1
United Kingdom	0	1	1	0	0
Vietnam	1	2	1	2	2

<i>Country</i>	<i>2001</i>	<i>2002</i>	<i>2003</i>	<i>2004</i>	<i>2005</i>
Zambia	0	1	1	0	1
<b><i>Foreign Students</i></b>	46	44	30	31	27
<b><i>Countries Represented</i></b>	22	25	17	16	18

The Student Information File (SIF) files sent to IHL are used for all of the residency tables (Tables 19-21), thus total unduplicated residency headcount in fall 2001 will differ from the majority of tables in the Fact Book. The SIF file for 2001 has a higher headcount (2323) due to continuing education workshop students who were added after the Day 10 headcount. Tables 19 -21 also will not include residence codes for two of the fall 2001 students whose residence codes were blank on the SIF.



**Table 21: Unduplicated Enrollment by MS County  
Fall 2001-2005**

<i>County</i>	<i>2001</i>	<i>2002</i>	<i>2003</i>	<i>2004</i>	<i>2005</i>
Adams	5	6	6	2	3
Alcorn	11	10	6	7	11
Amite	2	1	4	3	2
Attala	9	13	16	15	18
Benton	2	1	1	2	3
Bolivar	8	9	7	7	8
Calhoun	6	5	4	3	12
Carroll	5	2	2	3	3
Chickasaw	34	34	31	38	36
Choctaw	12	16	12	13	13
Claiborne	4	4	1	1	0
Clarke	3	4	3	4	4
Clay	126	108	114	122	121
Coahoma	5	5	3	1	4
Copiah	2	2	3	2	1
Covington	2	1	2	2	0
DeSoto	13	16	14	27	29
Forrest	6	6	4	5	5
Franklin	2	1	0	0	1
George	2	5	2	1	3
Greene	0	0	0	2	0
Grenada	1	5	7	8	8
Hancock	9	5	6	6	8
Harrison	16	18	24	30	26
Hinds	49	37	40	48	51
Holmes	5	4	10	8	6
Humphreys	1	2	1	1	1
Issaquena	0	0	0	1	1
Itawamba	22	25	20	11	17
Jackson	23	28	27	39	37
Jasper	2	1	3	5	6
Jefferson	0	1	0	1	0
Jefferson Davis	1	1	2	2	2
Jones	4	4	6	4	7
Kemper	9	3	4	6	13
Lafayette	10	6	7	5	5

<i>County</i>	<i>2001</i>	<i>2002</i>	<i>2003</i>	<i>2004</i>	<i>2005</i>
Lamar	5	6	3	9	4
Lauderdale	9	5	9	11	20
Lawrence	1	0	0	0	1
Leake	3	2	2	3	7
Lee	75	63	52	64	64
Leflore	4	2	5	8	5
Lincoln	1	1	4	3	3
Lowndes	971	781	813	846	847
Madison	16	11	17	22	35
Marion	0	1	0	0	0
Marshall	6	7	5	5	5
Monroe	138	146	148	163	152
Montgomery	13	4	7	4	2
Neshoba	9	14	14	18	13
Newton	5	6	7	7	9
Noxubee	57	58	57	57	68
Oktibbeha	131	121	119	124	127
Panola	1	3	3	7	8
Pearl River	9	12	8	9	12
Perry	1	1	0	1	1
Pike	7	5	3	4	3
Pontotoc	9	7	7	11	13
Prentiss	16	14	11	10	8
Quitman	1	0	2	2	2
Rankin	19	23	25	31	32
Scott	4	2	3	4	4
Sharkey	1	0	1	0	0
Simpson	0	0	0	1	0
Smith	1	3	5	2	2
Stone	1	3	1	1	1
Sunflower	3	5	5	9	5
Tallahatchie	5	5	4	3	3
Tate	6	6	6	4	2
Tippah	6	7	5	6	8
Tishomingo	3	8	5	4	3
Tunica	3	2	2	2	0
Union	7	6	4	7	14
Walthall	1	3	1	1	0
Warren	7	7	7	7	12
Washington	20	27	16	27	18

<i>County</i>	<i>2001</i>	<i>2002</i>	<i>2003</i>	<i>2004</i>	<i>2005</i>
Wayne	5	11	4	3	4
Webster	12	12	13	23	13
Wilkinson	2	3	3	1	0
Winston	30	20	27	29	36
Yalobusha	2	2	2	1	5
Yazoo	1	3	3	9	7
<b><i>Total MS Enrollment</i></b>	2038	1817	1830	1998	2043
<b><i># Represented</i></b>	77	76	74	78	72

The Student Information File (SIF) files sent to IHL are used for all of the residency tables (Tables 19-21), thus total unduplicated residency headcount in fall 2001 will differ from the majority of tables in the Fact Book. The SIF file for 2001 has a higher headcount (2323) due to continuing education workshop students who were added after the Day 10 headcount. Tables 19 -21 also will not include residence codes for two of the fall 2001 students whose residence codes were blank on the SIF.

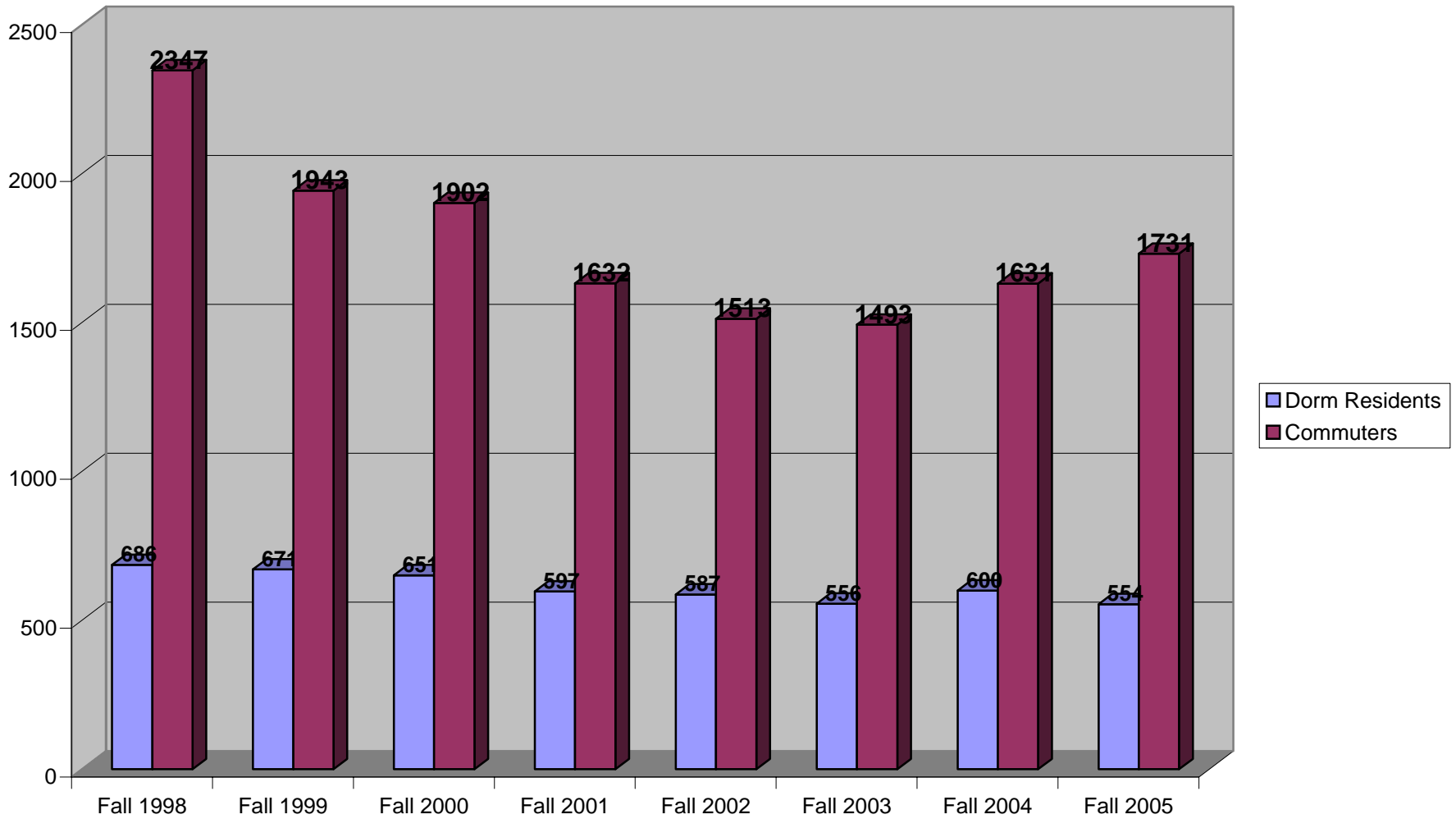
**Table 22: Residence Hall Student Headcount**

<b>Residence Hall</b>	<b>Fall 98</b>	<b>Fall 99</b>	<b>Fall 00</b>	<b>Fall 01</b>	<b>Fall 02</b>	<b>Fall 03</b>	<b>Fall 04</b>	<b>Fall 05</b>
Callaway	109	118	111	99	119	103	113	116
Columbus	0	0	0	0	50	47	58	46
Frazier	64	49	53	59	0	0	0	0
Goen	154	150	141	112	53	66	72	35
Grossnickle	38	37	38	35	40	39	43	35
Hastings-Simmons	42	42	45	49	49	49	54	51
Jones	146	138	130	128	133	129	116	105
Kincannon	133	137	133	115	143	123	144	166
<b>Total</b>	<b>686</b>	<b>671</b>	<b>651</b>	<b>597</b>	<b>587</b>	<b>556</b>	<b>600</b>	<b>554</b>

**Fall 2005 Residence Hall Enrollment by Race**

<b>Residence Hall</b>	<b>White</b>	<b>African American</b>	<b>Other</b>	<b>Total</b>
Callaway	79	30	7	116
Columbus	24	20	2	46
Goen	17	15	3	35
Grossnickle	27	7	1	35
Hastings-Simmons	34	14	3	51
Jones	78	22	5	105
Kincannon	87	70	9	166
<b>Total</b>	<b>346</b>	<b>178</b>	<b>30</b>	<b>554</b>

**Table 22A**  
**Residence Hall Students Vs. Commuter Students**  
**Unduplicated Headcount**



**Table 23: Degrees Granted by Major, Ethnicity, and Gender  
Academic Year 2004-2005**

			Race												Grand Total
College	Major	CIP	White		Black		Native American		Asian		Hispanic		Non-resident Alien		
			Men	Women	Men	Women	Men	Women	Men	Women	Men	Women	Men	Women	
<b>Arts &amp; Sciences</b>	Art Teacher Education	131302	1	4	0	0	0	0	0	0	0	0	0	0	5
	Biology, General	260101	0	2	0	2	0	0	0	0	0	0	0	0	4
	Chemistry, General	400501	0	2	0	0	0	0	0	0	0	0	1	0	3
	Communication, General	090101	2	10	1	5	0	0	0	0	0	0	0	0	18
	English Language & Literature, General	230101	1	9	0	0	0	0	0	0	0	0	0	1	11
	History, General	540101	5	0	0	0	0	0	0	0	0	0	0	0	5
	Mathematics	270101	1	2	0	1	0	0	0	0	0	0	0	0	4
	Microbiology/Bacteriology	260503	0	1	0	0	0	0	0	0	0	0	2	2	5
	Music Teacher Education	131312	0	1	0	0	0	0	0	0	0	0	0	0	1
	Music Therapy	512305	0	1	0	0	0	0	0	0	0	0	0	0	1
	Music, General	500901	3	1	2	0	0	0	0	0	0	0	0	0	6
	Paralegal/Legal Assistant	220103	0	5	2	4	0	0	0	0	0	0	0	0	11
	Physical Science, General	400101	0	0	0	1	0	0	0	0	0	0	0	0	1
	Political Science, General	451001	1	0	0	1	0	0	0	0	0	0	0	0	2
	Social Sciences, General	450101	0	2	0	6	0	0	0	0	0	0	0	0	8
	Spanish Language & Literature	160905	0	1	0	0	0	0	0	0	0	1	0	0	2
Visual & Performing Arts	500101	1	9	0	0	0	1	0	1	0	0	0	0	12	
<b>Business</b>	Accounting	520301	1	7	0	3	0	0	0	0	0	0	1	0	12
	Business Administration & Mgt., General	520201	7	15	1	14	0	0	0	0	0	0	0	1	38
<b>Culinary Arts</b>	Culinary Arts	120599	2	7	0	2	0	0	0	0	0	0	0	11	
<b>Education &amp; Human Sciences</b>	Curriculum & Instruction - Master's	130301	0	5	0	3	0	0	0	0	0	0	0	8	
	Educ. Of the Gifted & Talented - Master's	131004	1	2	0	0	0	0	0	0	0	0	0	3	
	Elementary Teacher Education	131202	0	36	0	6	0	0	0	0	0	0	0	42	
	Family Life & Relations Studies	190704	0	6	0	16	0	0	0	0	0	0	0	22	
	Health & Physical Education, General	310501	3	5	1	0	0	0	0	0	0	0	0	9	
	Health Teacher Education - Master's	131307	0	4	0	3	0	0	0	0	0	0	0	7	
	Psychology, General	420101	0	6	0	11	0	1	0	0	0	0	0	18	
	Reading Literacy Education - Master's	131315	0	2	0	1	0	0	0	0	0	0	0	3	
	Secondary Teacher Education - Master's	131205	0	4	0	4	0	0	0	0	0	0	0	8	
<b>Nursing &amp; Speech Language Pathology</b>	Nursing (RN Training) - ASN	511601	4	22	0	12	0	0	0	0	0	0	0	38	

<b>Nursing &amp; Speech</b>	Nursing (RN Training) - BSN	511601	3	36	1	11	0	0	0	1	0	0	0	1	53
	Nursing (RN Training) - MSN	511601	1	23	0	2	0	0	0	1	0	0	0	0	27
	Speech-Language Pathology - Bachelor's	510203	0	9	0	2	0	0	0	0	0	0	0	0	11
	Speech-Language Pathology - Master's	510203	0	8	0	0	0	0	0	0	0	0	0	0	8
<b>Grand Total</b>			37	247	8	110	0	2	0	3	0	1	4	5	417

**Table 24: History of Degrees Granted by Major & Gender**

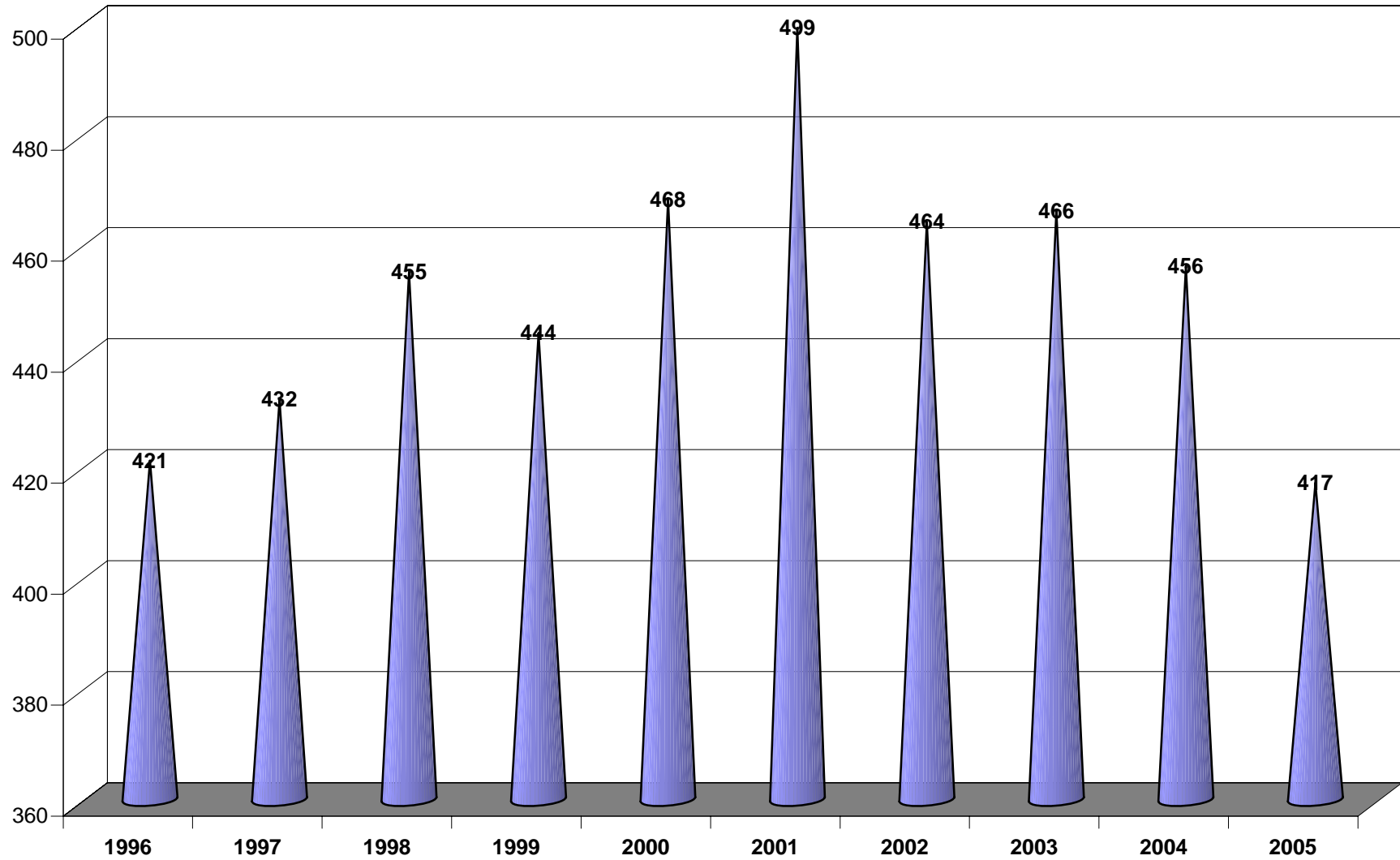
			Year		M/F							
College	Major	CIP	2001		2002		2003		2004		2005	
			Men	Women	Men	Women	Men	Women	Men	Women	Men	Women
<b>Arts &amp; Sciences</b>	Art Teacher Education	131302	0	1	0	3	0	0	2	2	1	4
	Biology, General	260101	0	8	2	10	0	11	0	8	0	4
	Broadcast Journalism	090402	1	2	0	0	0	0	0	0	0	0
	Chemistry, General	400501	1	1	2	4	0	1	1	0	1	2
	Clothing/Apparel & Textile Studies	190901	0	0	0	0	0	1	0	0	0	0
	Communication, General	090101	4	16	2	13	2	10	2	13	3	15
	Elementary Teacher Education	131202	0	0	0	0	0	1	0	0	0	0
	English Language & Literature, General	230101	0	12	1	17	1	14	2	21	1	10
	History, General	450801	2	3	0	6	0	1	0	0	0	0
		540101	0	0	0	0	0	0	1	1	5	0
	Journalism	090401	0	1	0	0	0	0	0	0	0	0
	Mathematics	270101	2	4	0	4	0	1	1	5	1	3
	Microbiology/Bacteriology	260501	3	9	1	7	1	5	0	0	0	0
		260503	0	0	0	0	0	0	1	2	2	3
	Music Teacher Education	131312	0	0	0	0	0	0	1	2	0	1
	Music Therapy	512305	0	0	0	0	0	0	0	0	0	1
	Music, General	500901	0	3	0	0	0	0	3	2	5	1
	Paralegal/Legal Assistant	220103	1	13	1	11	2	10	0	13	2	9
	Physical Science, General	400101	0	0	0	0	0	0	0	2	0	1
	Political Science, General	451001	2	1	0	0	0	2	1	1	1	1
Social Sciences, General	450101	2	10	2	10	2	8	3	3	0	8	
Spanish Language & Literature	160905	0	3	1	3	0	1	0	1	0	2	
Visual & Performing Arts	500101	2	12	6	14	3	18	6	11	1	11	
<b>Arts &amp; Sciences Total</b>			20	99	18	102	11	84	24	87	23	76
<b>Business</b>	Accounting	520301	4	20	2	17	1	11	5	13	2	10



			Year M/F									
			2001		2002		2003		2004		2005	
College	Major	CIP	Men	Women	Men	Women	Men	Women	Men	Women	Men	Women
<b>Business</b>	Business Administration & Mgt., General	520201	14	34	14	23	14	28	5	19	8	30
	Clothing/Apparel & Textile Studies	190901	0	3	0	1	0	0	0	0	0	0
<b>Business Total</b>			18	57	16	41	15	39	10	32	10	40
<b>Culinary Arts</b>	Culinary Arts	120599	3	6	5	8	1	15	2	7	2	9
<b>Culinary Arts Total</b>			3	6	5	8	1	15	2	7	2	9
<b>Education &amp; Human Sciences</b>	Curriculum & Instruction - Master's	130301	0	9	1	7	0	9	0	5	0	8
	Educ. Of the Gifted & Talented Master's	131004	1	10	0	17	0	6	0	8	1	2
	Elementary Teacher Education	131202	1	57	1	54	1	52	1	52	0	42
	Family Life & Relations Studies	190704	0	21	0	17	1	25	0	31	0	22
	Health & Physical Education, General	310501	5	15	1	16	4	12	1	7	4	5
	Health Teacher Education - Master's	131307	1	2	0	1	1	5	0	3	0	7
	Individual/Family Dev. Studies, General	190701	0	1	0	1	0	0	0	0	0	0
	Psychology, General	420101	0	26	2	19	1	22	2	18	0	18
	Reading Literacy Education - Master's	131315	0	0	0	0	0	0	1	4	0	3
	Secondary Teacher Education - Master's	131205	0	0	0	2	0	1	0	4	0	8
<b>Education &amp; Human Sciences Total</b>			8	141	5	134	8	132	5	132	5	115

			Year M/F									
			2001		2002		2003		2004		2005	
College	Major	CIP	Men	Women	Men	Women	Men	Women	Men	Women	Men	Women
<b>Nursing &amp; Speech Language Pathology</b>	Nursing (RN Training) - ASN	511601	2	23	0	16	1	39	2	51	4	34
	Nursing (RN Training) - BSN	511601	7	65	4	68	7	66	3	55	4	49
	Nursing (RN Training) - MSN	511601	4	23	2	24	1	22	2	24	1	26
	Speech-Language Pathology - Bachelor's	510203	0	12	0	8	1	8	0	13	0	11
	Speech-Language Pathology - Master's	510203	0	11	0	13	0	16	0	7	0	8
<b>Nursing &amp; Speech Language Pathology</b>												
<b>Total</b>			13	134	6	129	10	151	7	150	9	128
<b>Grand Total</b>			62	437	50	414	45	421	48	408	49	368

## Degrees Granted AY 1995-2005

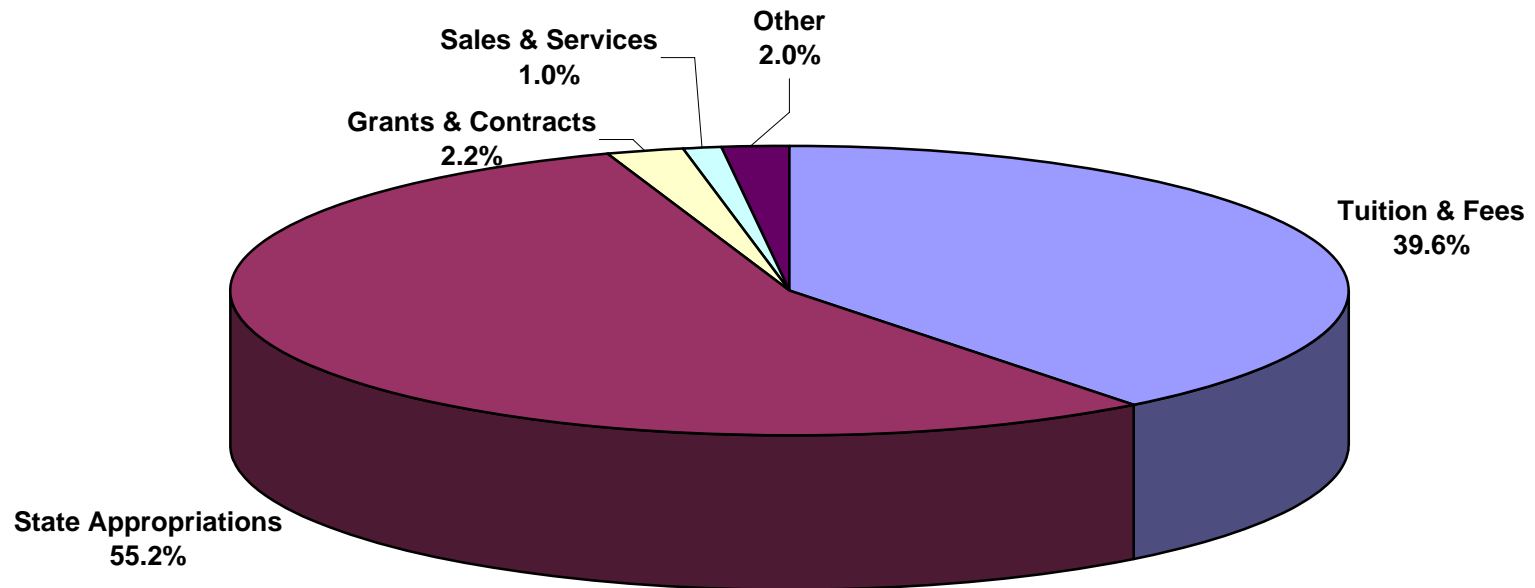


**Table 25: Summary of Budgeted E&G Revenues and Expenditures**

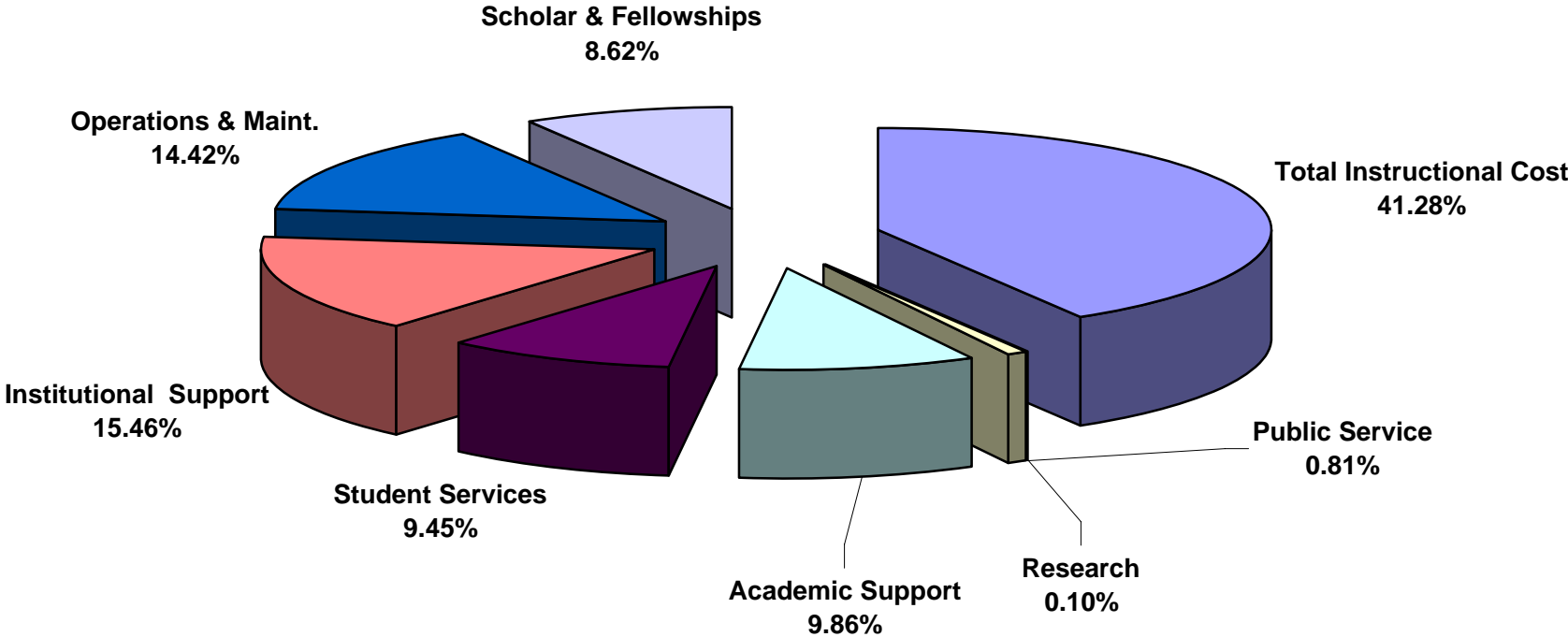
	2005-06		2004-05	
<b>CURRENT FUND REVENUE</b>				
Tuition and Fees	\$9,489,431	39.58%	\$ 8,932,424	37.63%
<b>State Govt. Appropriations</b>				
General Support	\$ 9,909,884	41.33%	\$ 10,161,930	42.81%
Interest Funds	\$ 9,389	0.04%	\$ 9,389	0.04%
MS Gov. School	\$ 157,500	0.66%	\$ 157,500	0.66%
Tupelo Nursing	\$ -	0.00%	\$ -	0.00%
Education Enhancement Fund	\$ 1,985,239	8.28%	\$ 1,675,488	7.06%
Education Enhancement Surplus	\$ -	0.00%	\$ -	0.00%
Contingency Funds	\$ 1,177,159	4.91%	\$ 1,450,568	6.11%
<b>Sub-Total</b>	<b>\$ 13,239,171</b>	<b>55.22%</b>	<b>\$ 13,454,875</b>	<b>56.68%</b>
<b>Local Govt. Appropriations</b>	<b>\$ -</b>	<b>0.00%</b>	<b>\$ -</b>	<b>0.00%</b>
<b>Total Govt. Appropriations</b>	<b>\$ 13,239,171</b>	<b>55.22%</b>	<b>\$ 13,454,875</b>	<b>56.68%</b>
<b>Grants and Contracts</b>				
Federal Grants and Contracts	\$ 50,000	0.21%	\$ 35,866	0.15%
State Grants and Contracts	\$ 208,704	0.87%	\$ 188,097	0.79%
Other	\$ 272,583	1.14%	\$ 213,579	0.90%
<b>Sub-Total</b>	<b>\$ 531,287</b>	<b>2.22%</b>	<b>\$ 437,542</b>	<b>1.84%</b>
<b>Sales and Services</b>	<b>\$ 240,093</b>	<b>1.00%</b>	<b>\$ 215,093</b>	<b>0.91%</b>
<b>Other</b>	<b>\$ 475,435</b>	<b>1.98%</b>	<b>\$ 699,836</b>	<b>2.95%</b>
<b>TOTAL CURRENT REVENUE</b>	<b>\$ 23,975,417</b>	<b>100.00%</b>	<b>\$ 23,739,770</b>	<b>100.00%</b>
<b>CURRENT FUND EXPENDITURES</b>				
Total Instructional Cost	\$ 9,898,195	41.28%	\$ 10,514,671	45.84%
Research	\$ 23,947	0.10%	\$ 9,813	0.04%
Public Service	\$ 194,701	0.81%	\$ 193,712	0.84%
Academic Support	\$ 2,362,977	9.86%	\$ 1,498,323	6.53%
Student Services	\$ 2,265,869	9.45%	\$ 2,353,333	10.26%
Institutional Support	\$ 3,706,304	15.46%	\$ 4,132,050	18.02%
Operations & Maintenance	\$ 3,456,924	14.42%	\$ 2,878,868	12.55%
Scholarships & Fellowships	\$ 2,066,500	8.62%	\$ 2,159,000	9.41%
Mandatory Transfers	\$ -	0.00%	\$ -	
Non-Mandatory Transfers	\$ -	0.00%	\$ -	
<b>TOTAL CURRENT EXPENDITURES</b>	<b>\$ 23,975,417</b>	<b>100.00%</b>	<b>\$ 23,739,770</b>	<b>103.51%</b>

SOURCE: MUW General Fund Budgets

# 2005-2006 MUW GENERAL FUND BUDGET PERCENT OF TOTAL E&G REVENUE BY BUDGET ENTITY



**2005-2006 MUW GENERAL FUND BUDGET  
PERCENT OF TOTAL E&G EXPENDITURES BY BUDGET ENTITY**



**Table 26**  
**Authorization of State General Obligation Bonds for MUW**  
**FY 1990 - 2006**

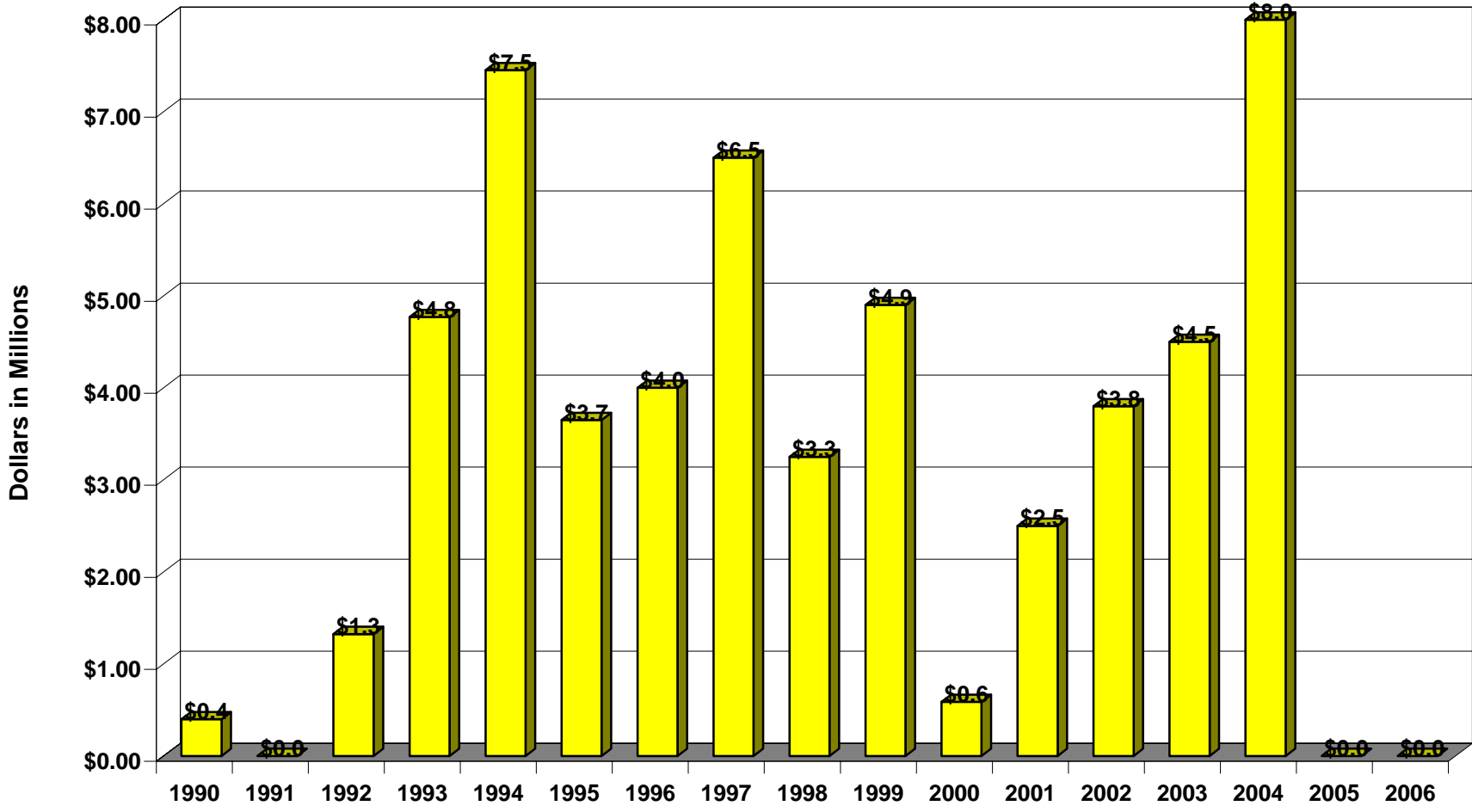
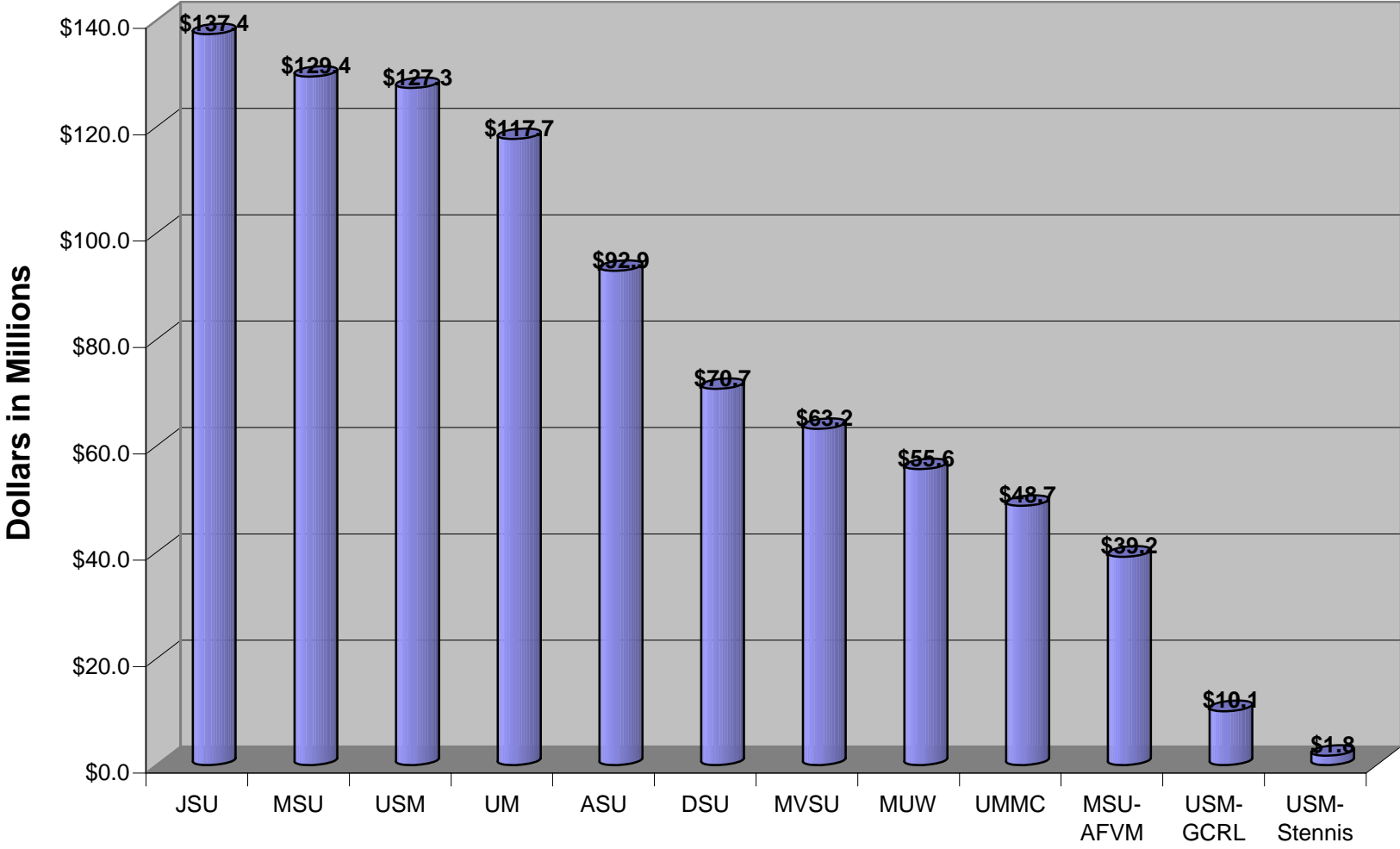


Chart does not include MS Emergency Mgt. Agency disaster recovery funds.

**Table 27**  
**Authorization of State General Obligation Bonds for IHL FY 1990 - 2006**



**Chart does not include \$35.6 million Ayers bonds divided between ASU, JSU, and MVSU.**  
**Chart does not include MUW's MS Emergency Mgt. Agency disaster recovery funds.**



## Explanation of Terms

**Academic Year** is the year that begins with the first summer session and continues through the next spring session; for example, Academic Year 2005-2006 refers to Summer 2005, Fall 2005, and Spring 2006.

**ACT** is the American College Test, which is divided into four main sections: Mathematics, English, Reading, and Science Reasoning.

**CIP Codes** are the Classification of Instructional Program Codes that were developed in 2000. These six-digit codes are used to answer questions concerning program enrollments and completions on three of the IPEDS Surveys: Institutional Characteristics, Completions, and Enrollment in Occupationally Specific Programs.

**Cohort** refers to a specific population, which is studied over a period of time, such as a group of students who enrolled for the first time in the Fall of 2005.

**EMAS** is the Enrollment Management Action System software that is used by the Admissions Office.

**Fiscal Year** is the year that begins on July 1 and ends on June 30; for example, Fiscal Year 2005-2006 (FY 06) extends from July 1, 2005 through June 30, 2006.

**Full-time graduate student** is one who is enrolled in 9 or more semester credit hours.

**Full-time undergraduate student** is one who is enrolled in 12 or more semester credit hours.

**Graduate FTE** (full-time equivalent) is calculated by dividing total graduate semester credit hours by 12.

**Headcount** as defined by IHL is the actual number of different individuals enrolled in credit courses. Headcount can be unduplicated or duplicated; a duplicated headcount duplicates students who take classes on more than one campus. According to IHL's duplicated headcount definition, an undergraduate student who takes nine hours on main campus and three hours at Tupelo is counted as two part-time undergraduate students. In duplicated headcount, a student's full-time/part-time status is determined by hours per campus not total hours taken.

**IHL** refers to the Board of Trustees of State Institutions of Higher Learning in Mississippi.

**IPEDS** is the Integrated Post-secondary Education Data System.

**Non-traditional student**, as defined by IHL, refers to an undergraduate student who is 25 years of age or over.

**Part-time graduate student** is one who is enrolled in less than 9 semester credit hours.

**Part-time undergraduate student** is one who is enrolled in less than 12 semester credit hours.

**Ranked faculty** are full-time faculty positions including instructors, assistant professors, associate professors, and professors.

**SREB** (Southern Regional Education Board) States include: Alabama, Arkansas, Delaware, Florida, Georgia, Kentucky, Louisiana, Mississippi, Maryland, North Carolina, Oklahoma, South Carolina, Tennessee, Texas, Virginia, and West Virginia.

**Student Level, as defined by IHL  
Definitions Effective as of the Beginning of Summer 2001**

**Freshmen** – Students who have completed less than 30 semester hours.

**Sophomores** – Students who have completed at least 30 semester hours, but fewer than 60 semester hours.

**Juniors** – Students who have completed at least 60 semester hours, but fewer than 90 semester hours.

**Seniors** – Students who have completed at least 87 semester hours, but have not completed all the requirements for the undergraduate degree for which she/he is currently enrolled.

**Fifth Year Level** – Student is at advanced undergraduate upper level in five-year programs (e.g. architecture and engineering) or students with a bachelor's or higher degree who are taking additional undergraduate courses.

**Master's** – Student is in a program or degree that usually covers one year and approximately 30 semester hours above the baccalaureate.

**Specialist** – Student is in a program or degree that usually covers one year and approximately 30-36 semester hours above the baccalaureate.

**Doctoral** – Student is in a program or degree that usually covers two years and approximately 60 semester hours above the master's

***Unclassified Post-baccalaureate*** – Student is not a candidate for a Baccalaureate degree or other formal award, although taking graduate classes with other students. Includes but is not limited to “special” and other students taking first-professional or graduate courses, but who are not working toward a degree.

***First Professional*** – Student is in the first year of a Year/Level 1 program or degree leading to the first level of professional training, as recognized by others in the profession. Examples: J.D., M.D., D.V.M. etc.

**Total Operating Budget** includes restricted, designated, and auxiliary funding.

**Type of current registration as defined by IHL:**

***First-time Freshman*** – (1) an entering freshman granted fewer hours than required for transfer status (less than 12 hours), including students enrolled in the fall term who attended college for the first time in the prior summer term and did not have the twelve hours required for transfer status or (2) a student who successfully completed the twelve hour Summer Development Program regardless of the institution attended or (3) a student who entered with advance standing (college credits earned before high school graduation)

***Returning Student*** – An undergraduate student who has registered at this institution during the preceding regular term and would not be classed as a first-time freshman.

***Readmitted Student*** – An undergraduate student who previously attended this institution but did not attend this institution during the previous regular term.

***Transfer Student*** – An undergraduate student entering the reporting institution for the first time who was granted at least twelve hours toward a degree or certificate for work done at another post-secondary institution – exceptions include Summer Developmental Program participants and students with advance placement credit or some other form of advanced standing.

***Returning Graduate Students*** – A student who is enrolled for credit for work creditable toward a graduate degree, i.e., master’s, specialist, or doctorate and was previously registered as a graduate student at this institution or another institution.

***First-Professional Student*** – A student who is enrolled for work creditable toward a first professional degree (law, dentistry, medicine)

***Transient Student*** – A student who is regularly enrolled and in good standing at an institution other than the reporting institution and is taking a course or courses at the reporting institution which he/she intends to transfer to his/her regular institution.

***High School Student Taking College Courses*** – A student who is still in high school but has special permission to take a college level course.

***Non-formula Students 21 and over*** - A student who is currently registered under provisions or original admission code of 6 on data element 4-112 which is for students who are at least age 21 and who do not meet admissions standards and who do not fall into the first five Original Admission Code categories.

***First-time graduate student*** – A new graduate student. One who has not been registered previously as a graduate student.

***Other*** – A student who is not classified in one of the preceding categories.

***Summer Developmental Program Participant*** – A student who does not meet one of the four criteria to gain admission defined by Original Admission Code (Element 4-112, Codes “E” through “H”) Valid in summer term only

**Unduplicated headcount** figures count each individual student once regardless of the number of branch campus affiliations (Tupelo, Columbus Air Force Base).

**Undergraduate FTE** (full-time equivalent) is calculated by dividing total undergraduate semester credit hours by 15.

**Unranked faculty** are full-time faculty positions filled by lecturers who do not have tenure and cannot seek rank.

**University Abbreviations:**

**ASU** – Alcorn State University

**DSU** – Delta State University

**JSU** – Jackson State University

**MSU** –Mississippi State University

**MUW** – Mississippi University for Women

**MVSU** – Mississippi Valley State University

**UM** – University of Mississippi

**UMMC** – University of Mississippi Medical Center

**USM** – University of Southern Mississippi

**MSU-AFVM** – Mississippi State University’s Division of Agriculture, Forestry, and  
Veterinary Medicine

**USM-GCRL** – University of Southern Mississippi’s Gulf Coast Research Laboratory

**USM-Stennis** – University of Southern Mississippi’s Stennis Space Center