

**Mississippi University for Women
Fact Book
2006-2007**



Office of Institutional Research

**Reneau Hall - 1st Floor
1100 College St., W-160
Columbus, MS 39701
662-329-8543**

MISSISSIPPI UNIVERSITY FOR WOMEN
FACTBOOK 2006 - 2007

Table of Contents

Organizational Chart.....1
MUW Vision, Mission, & Guiding Principles2
MUW Goals4
MUW Profile5

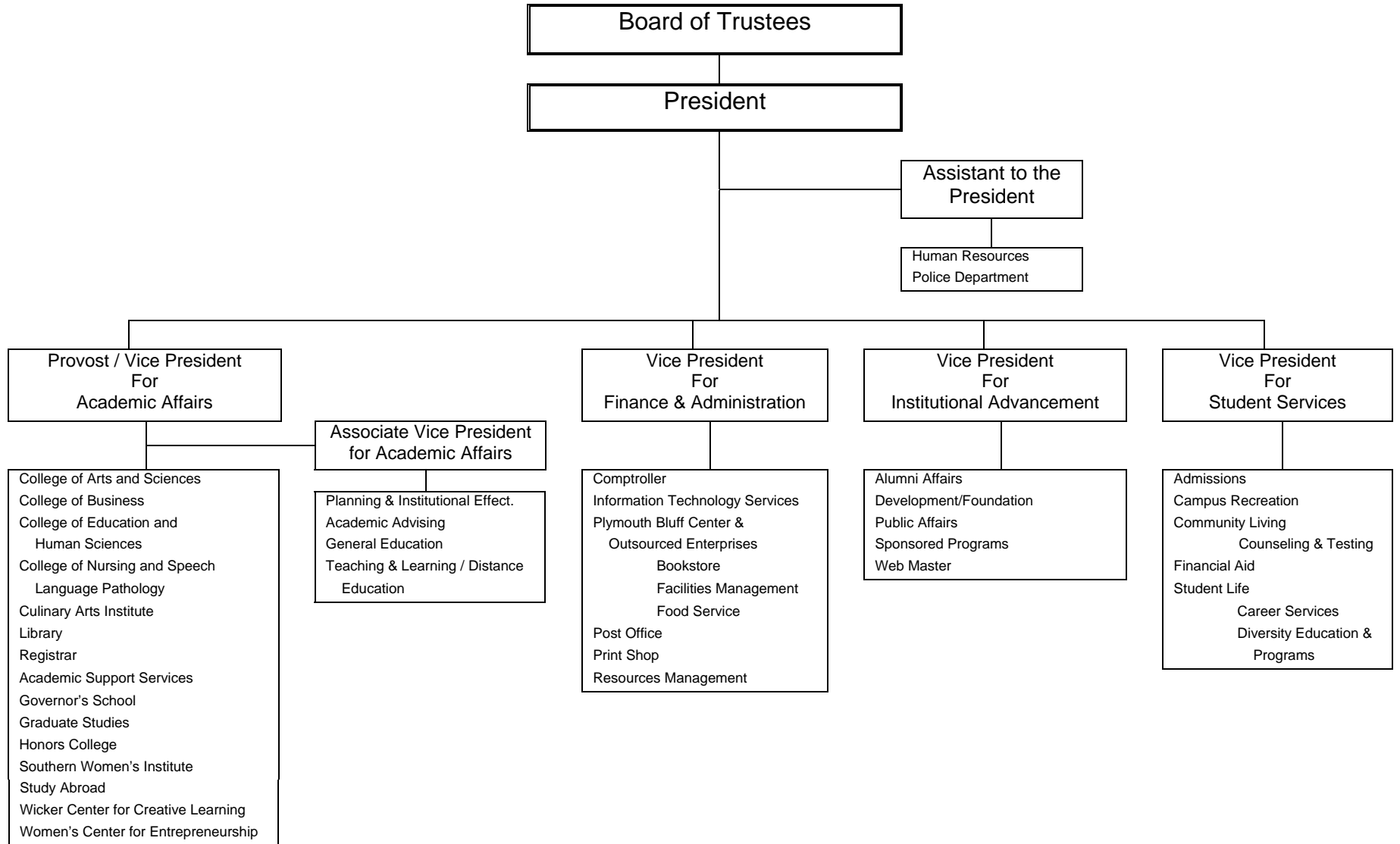
<u>Table</u>	<u>Description</u>	
1.	First-time, Full-time Bachelor’s Degree Seeking Freshman Student Yield Analysis...	7
1A.	Degree Seeking Transfer Student Yield Analysis.....	8
1B.	First-time, Full-time Bachelor’s Degree Seeking Freshman Headcount (Graph).....	9
1C.	First-time, Full-time Bachelor’s Degree Seeking Freshman Cohort Retention & Graduation Rates.....	10
2.	First-time, Full-time Bachelor’s Degree Seeking Freshman ACT Scores	11
3.	Undergraduate Grade Distribution by College & Dept. – Fall 2005	12
	Graduate Grade Distribution by College & Dept. – Fall 2005	14
	Total Grade Distribution by College & Dept. – Fall 2005	15
4.	Unduplicated Enrollment by Ethnicity, Gender, FT/PT Status, and UG/GR Status for Fall 2005	17
5.	Duplicated Headcount and FTE Enrollment - Fall Terms	20
	Duplicated Headcount and FTE Enrollment - Fall Terms Graph	21
5a.	Unduplicated Headcount and FTE Enrollment - Fall Terms	22
	Unduplicated Headcount and FTE Enrollment - Fall Terms Graph	23
6.	Unduplicated Enrollment and Credit Hour Production by FT/PT Status	24
	FT/PT Unduplicated Headcount - Fall Terms Graph.....	25
7.	Unduplicated Enrollment By Gender - Fall 1996 to Fall 2005.....	26
	Unduplicated Enrollment By Gender - Fall 1996 to Fall 2005 Graph.....	27

8.	Unduplicated Enrollment By Ethnicity - Fall 1996 to Fall 2005	28
	Unduplicated Enrollment By Ethnicity - Fall 1996 to Fall 2005 Graph.....	29
9.	Class Type Enrollment.....	30
10.	Unduplicated Enrollment By Student Classification - Fall Terms.....	31
	Unduplicated Enrollment By Student Classification - Fall Terms Graph.....	32
11.	Non-traditional Vs. Traditional Students - Unduplicated Headcount - Fall Terms	33
	Non-traditional Vs. Traditional Students Graph.....	34
12.	Faculty Profile.....	35
	Full-time Faculty Profile Fall 2005 Graph.....	36
13.	Unduplicated Headcount Enrollment by Credit Hours and Student Classification	37
14.	Age Distribution by Student Classification: Unduplicated Headcount	38
15.	Credit Hour Generation by College & Department	39
	Credit Hour Generation by College – Fall 2005 Graph.....	41
16.	Enrollment by Major and Program Type (Unduplicated).....	42
17.	Unduplicated Headcount Enrollment by College: Fall 2003 - Fall 2005	45
18.	Faculty Credit Hour Production by Course Level	46
19.	Unduplicated Enrollment by State of Residence: Fall 2001 - 2005.....	47
19A.	Unduplicated Enrollment by State of Residence & Student Classification – Fall 2005	48
20.	Unduplicated Headcount Enrollment by Country: Fall 2001-2005.....	49
21.	Unduplicated Enrollment by MS County: Fall 2000-2004.....	50
22.	Residence Hall Student Headcount.....	53
22A.	Residence Hall Students Vs. Commuter Students Unduplicated Headcount ..	54
23.	Degrees Granted by Major, Ethnicity, and Gender - Academic Year 2005	55
24.	History of Degrees Granted by Major and Gender.....	56
	Degrees Granted AY 1990-2005 Graph	58
25.	Summary of Budgeted E&G Revenues and Expenditures	59
	2004-2005 E&G Revenues by Budget Entity Graph.....	60

2002-2005 E&G Expenditures by Budget Entity Graph	61
27. Authorization of State General Obligation Bonds for MUW FY 1990-2006..	62
28. Authorization of State General Obligation Bonds for IHL FY 1990-2006	63
APPENDIX: Explanation of Terms	64

Mississippi University for Women Organizational Chart

Effective 6/26/06



Mississippi University for Women Fact Sheet

Vision, Mission and Guiding Principles

Vision

Building on its long tradition of excellence in liberal arts and professional education, as well as its historic focus on academic and leadership development for women, Mississippi University for Women will continue to be a university that prepares both women and men for successful lives by providing a high-quality education in a personalized learning environment.

Mission

A Carnegie Master's II public institution, Mississippi University for Women provides high-quality undergraduate and graduate education for women and men in a variety of liberal arts and professional programs, while maintaining its historic commitment to academic and leadership development for women. MUW provides education in Business and Communication, Education and Human Sciences, Fine and Performing Arts, Health and Kinesiology, Humanities, Culinary Arts, Nursing, Science and Mathematics, utilizing small classes and emphasizing a personalized learning environment. The graduates of MUW are prepared for competitive careers and excellent graduate and professional schools. MUW provides educational opportunities throughout Mississippi and the United States while addressing the unique educational and public service needs of northeast Mississippi and adjoining counties in northwest Alabama.

Guiding Principles

MUW provides high-quality instructional programs that emphasize teaching and learning. With faculty and staff of the highest caliber, MUW is dedicated to providing a campus environment for students that encourages lifelong learning, strong career preparation, and personal growth. Graduates are expected to have skills in communication, technology, and critical thinking, as well as an awareness of self, gender-related issues, cultural diversity, and responsible citizenship.

MUW is student oriented. MUW provides small classes and emphasizes personalized student attention, so that each student will have the opportunity to succeed. MUW offers a student-life program that stimulates learning and leadership development.

MUW values research, scholarship, and creativity. While MUW is primarily a teaching institution, the university supports research, scholarship, and creativity to enhance the professional development of faculty and staff in order to better prepare students.

MUW is committed to diversity among its faculty, staff, and students. The faculty, staff,

and students of MUW represent the global society in which we live. MUW believes that diversity allows students to grow in their understanding of self and others.

MUW endorses sound organizational principles. MUW is committed to operational efficiency, collaborative strategic planning, institutional effectiveness, and creative problem solving.

MUW meets regional, state, and national needs for higher education. MUW responds to the needs of the local community by providing cultural activities; programs for intellectual, professional, and social development; and by assisting in economic development. MUW extends its outreach to the state and nation using multiple delivery methods, including the internet and other advanced systems.

MUW is committed to public service. MUW forms partnerships with businesses, as well as with educational, governmental, public service, and charitable organizations, to create opportunities that provide economic and social advantages for the institution, community, and region.

Approved by the Mississippi IHL Board on January 15, 2004

“W-2009”

A Strategic Plan for MUW

Goals

MUW Goal 1: Provide high quality, student-centered instructional programs in a personalized learning environment.

MUW Goal 2: Ensure high quality academic and leadership preparation for women.

MUW Goal 3: Provide student life programs that stimulate intellectual, social, emotional, physical, and leadership development.

MUW Goal 4: Increase enrollment through effective recruitment and retention strategies.

MUW Goal 5: Promote effective organizational principles.

MUW Goal 6: Provide programs and services that enhance the cultural, intellectual, social, and professional development of the citizens of our region, state, and nation.

MUW Goal 7: Promote diversity among MUW students, faculty, and staff.

MUW Goal 8: Encourage research, scholarship, and creative endeavors to enhance instruction and professional development.

MUW Goal 9: Provide physical resources, infrastructure, and technology to advance the educational, operational, and public service goals of the University.

MUW Goal 10: Build partnerships and public awareness to support the University’s mission and to promote institutional and economic development.

Approved by the President on March 8, 2004

MUW Profile

MUW was ranked the third best value among Southern Master's universities. It is the eighth time in 11 years that MUW has been ranked a best value or best buy.

In addition to being the highest ranked best value in Mississippi, MUW was the No. 10 top public Southern Master's university.

2,428 unduplicated students are enrolled at MUW for the Fall 2006 semester.

74 % are full-time students

85 % are female

15 % are male

64 % are white

32 % are African-American

12 % are degree seeking new transfer students

8 % are first-time, full-time bachelor's degree seeking freshman students

25.15 is the average age of a MUW student

24.73 is the average age of a male student

25.22 is the average age of a female student

67 % of MUW students are 24 years old or younger

33 % of MUW students are 25 or older

Student to Faculty FTE Ratio: The Student to Faculty FTE ratio is approximately 12 to 1.

MUW Employees

MUW has approximately 295 full-time employees.

Approximately 70 % of full-time MUW employees are female.

Approximately 30 % of MUW employees are men.

Approximately 17 % of MUW employees are minorities.

Student Fees 2006-2007 AY

Under graduate

Semester Hour \$164.00 (In-state)

Semester Hour \$405.20 (Out-of-state)

Graduate

Semester Hour \$218.50 (In-state)

Semester Hour \$540.25 (Out-of-state)

Grounds and Buildings

The campus covers more than 114 acres in residential Columbus, MS. Twenty-three of

more than 60 buildings are listed on the National Historic Register.

MUW is an affirmative action/equal opportunity institution.

Table 1 First-time Freshmen

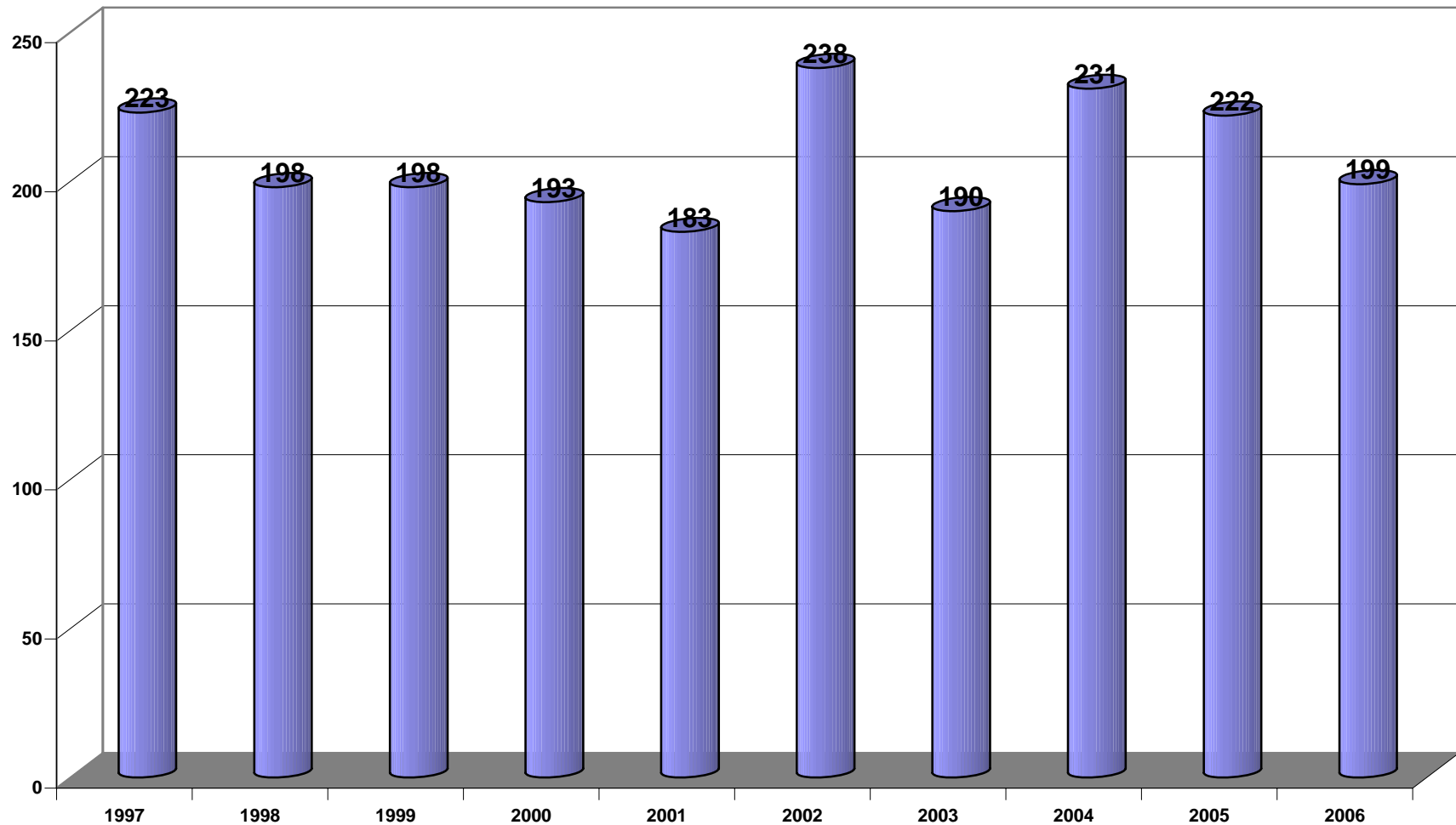
	2005	2006
Applicants	720	1381
Accepted	426	683
Enrolled	255	267
Of those Enrolled		
First-time Full-time Bachelor's Degree Seeking	222	199
First-time Part-time Bachelor's Degree Seeking	7	3
First-time Full-time Other Degree Seeking	16	58
First-time Part-time Other Degree Seeking	0	3
Total Degree Seeking Freshmen	245	263

**Beginning in Fall 2006, our Pre-BSN, Pre-OT, and Pre-Engineering Students will be included in the Other Degree Seeking Cohort instead of the Bachelor's Degree Seeking Cohort. The Other Degree Seeking Cohorts already included ASN and Pre-ASN students.*

Table 1A: First-time Transfers

	2005	2006
Applicants	726	1061
Accepted	465	584
Enrolled	328	323
Of those Enrolled		
Full-time Degree Seeking	267	273
Part-time Degree Seeking	48	32
Total Degree Seeking	315	305

**Table 1B: First-time, Full-time Bachelor's Degree Seeking Freshman Headcount
Fall 1997 - 2006**



*Beginning in Fall 2006, our Pre-BSN, Pre-OT, and Pre-Engineering Students will be included in the Other Degree Seeking Cohort instead of the Bachelor's Degree Seeking Cohort. The Other Degree Seeking Cohorts already included ASN and Pre-ASN students.

Table 1C
First-time Full-time Bachelor's Degree Seeking Freshman Cohort Retention & Graduation Rates

	Fall 2001		Fall 2002		Fall 2003		Fall 2004		Fall 2005		Fall 2006	
Fall 2001 Cohort												
Enrolled	183		117	63.93%	93	50.82%	83	45.36%	36	19.67%	13	7.10%
Graduated	0		0	0.00%	0	0.00%	12	6.56%	48	26.23%	69	37.70%
Total	183		117	63.93%	93	50.82%	95	51.91%	84	45.90%	82	44.81%

	Fall 2002		Fall 2003		Fall 2004		Fall 2005		Fall 2006		Fall 2007	
Fall 2002 Cohort												
Enrolled	238		160	67.23%	144	60.50%	127	53.36%	65	27.31%		
Graduated	0		0	0.00%	0	0.00%	1	0.42%	65	27.31%		
Total	238		160	67.23%	144	60.50%	128	53.78%	130	54.62%		

	Fall 2003		Fall 2004		Fall 2005		Fall 2006		Fall 2007		Fall 2008	
Fall 2003 Cohort												
Enrolled	190		128	67.37%	111	58.42%	92	48.42%				
Graduated	0		0	0.00%	0	0.00%	1	0.53%				
Total	190		128	67.37%	111	58.42%	93	48.95%				

	Fall 2004		Fall 2005		Fall 2006		Fall 2007		Fall 2008		Fall 2009	
Fall 2004 Cohort												
Enrolled	231		160	69.26%	120	51.95%						
Graduated	0		0	0.00%	0	0.00%						
Total	231		160	69.26%	120	51.95%						

	Fall 2005		Fall 2006		Fall 2007		Fall 2008		Fall 2009		Fall 2010	
Fall 2005 Cohort												
Enrolled	222		155	69.82%								
Graduated	0		0	0.00%								
Total	222		155	69.82%								

**Table 2: First-time, Full-time Bachelor's Degree Seeking Freshman
ACT Scores**

Fall 2002	Composite	Math	English	Reading	Science Reasoning
Twenty-fifth percentile	18	17	19	18	19
Fiftieth percentile	21	19	21	22	20
Seventy-fifth percentile	24	22	26	27	23
Average	21.36	19.44	22.25	22.28	20.84
Minimum	14	13	11	11	12
Maximum	32	29	35	36	34

Fall 2003	Composite	Math	English	Reading	Science Reasoning
Twenty-fifth percentile	18	16	18	18	18
Fiftieth percentile	21	18	21	22	20
Seventy-fifth percentile	24	21	26	27	23
Average	21.2	19.09	22.07	22.52	20.6
Minimum	14	13	11	12	11
Maximum	29	30	33	36	31

Fall 2004	Composite	Math	English	Reading	Science Reasoning
Twenty-fifth percentile	18	17	18	18	19
Fiftieth percentile	20	18	21	21	20
Seventy-fifth percentile	24	22	25	25	23
Average	21.03	19.15	22.01	21.55	20.65
Minimum	14	7	12	10	14
Maximum	32	30	34	35	30

Fall 2005	Composite	Math	English	Reading	Science Reasoning
Twenty-fifth percentile	18	17	19	18	18
Fiftieth percentile	22	19	22	22	21
Seventy-fifth percentile	25	23	26	27	23
Average	21.69	19.7	22.78	22.86	20.9
Minimum	11	10	10	10	11
Maximum	32	33	35	36	33

Fall 2006	Composite	Math	English	Reading	Science Reasoning
Twenty-fifth percentile	19	17	19	19	18
Fiftieth percentile	21	18	22	22	20
Seventy-fifth percentile	24	21	26	26	23
Average	21.51	19.13	22.52	23.1	20.89
Minimum	16	14	14	12	11
Maximum	32	29	36	36	33

Table 3: Undergraduate Grade Distribution By College and Department Fall 2006

College	Department	UG/GR	A		B		C		D		F		Other								Other Total		Total
			#	%	#	%	#	%	#	%	#	%	AU	I	NA	NC	P	W	WF	WP	#	%	
Arts & Sciences	Communication	UG	163	50%	96	30%	27	8%	5	2%	17	5%	1	0	0	0	0	7	2	5	15	5%	323
	History, Political Science,	UG	254	28%	259	29%	190	21%	60	7%	75	8%	1	0	0	0	0	15	13	27	56	6%	894
	Languages, Literature and	UG	433	37%	356	31%	165	14%	36	3%	52	4%	3	4	1	48	0	12	15	34	117	10%	1159
	Music and Theatre	UG	239	57%	96	23%	30	7%	13	3%	18	4%	2	2	0	0	0	1	6	9	20	5%	416
	Science and Mathematics	UG	360	21%	417	24%	317	18%	185	11%	244	14%	5	1	1	6	65	29	13	106	226	13%	1749
	Art and Design	UG	190	46%	135	33%	37	9%	8	2%	24	6%	4	0	1	0	0	5	0	6	16	4%	410
	Total			1639	33%	1359	27%	766	15%	307	6%	430	9%	16	7	3	54	65	69	49	187	450	9%
Business	Business Administration	UG	93	27%	113	32%	72	21%	18	5%	38	11%	0	4	1	0	0	2	2	6	15	4%	349
	Accounting and MIS	UG	201	43%	104	22%	67	14%	29	6%	42	9%	1	3	0	0	0	5	4	9	22	5%	465
	Total		294	36%	217	27%	139	17%	47	6%	80	10%	1	7	1	0	0	7	6	15	37	5%	814
Culinary Arts	Culinary Arts Institute	UG	95	37%	49	19%	42	16%	8	3%	29	11%	0	2	0	0	29	4	1	0	36	14%	259
	Total		95	37%	49	19%	42	16%	8	3%	29	11%	0	2	0	0	29	4	1	0	36	14%	259

College	Department	UG/GR	A		B		C		D		F		Other							Other Total		Total	
			#	%	#	%	#	%	#	%	#	%	AU	I	NA	NC	P	W	WF	WP	#		%
Education & Human Sciences	Education	UG	493	67%	123	17%	39	5%	22	3%	24	3%	0	5	1	1	0	11	5	17	40	5%	741
	Health and Kinesiology	UG	507	63%	141	17%	62	8%	13	2%	39	5%	10	0	0	0	0	12	7	19	48	6%	810
	Psychology and Family Studies	UG	246	25%	298	31%	224	23%	87	9%	59	6%	1	5	0	0	0	17	11	25	59	6%	973
	Total		1246	49%	562	22%	325	13%	122	5%	122	5%	11	10	1	1	0	40	23	61	147	6%	2524
Nursing & Speech Language Pathology	Associate Nursing	UG	200	46%	80	18%	112	26%	16	4%	11	3%	0	0	0	0	0	0	4	14	18	4%	437
	Baccalaureate Nursing	UG	157	24%	200	31%	100	15%	10	2%	5	1%	0	7	0	0	151	13	2	3	176	27%	648
	Speech-Language Pathology	UG	81	58%	35	25%	15	11%	4	3%	1	1%	0	0	0	0	0	0	0	4	4	3%	140
	Total		438	36%	315	26%	227	19%	30	2%	17	1%	0	7	0	0	151	13	6	21	198	16%	1225
University	University Classes	UG	239	40%	39	7%	13	2%	12	2%	21	4%	0	0	0	71	175	11	2	16	275	46%	599
	Total		239	40%	39	7%	13	2%	12	2%	21	4%	0	0	0	71	175	11	2	16	275	46%	599
Total			3951	40%	2541	7%	1512	2%	526	2%	699	4%	28	33	5	126	420	144	87	300	275	46%	10372

Table 3: Graduate Grade Distribution By College and Department Fall 2006

College	Department	UG/GR	A		B		C		D		F		Other								Other Total		Total
			#	%	#	%	#	%	#	%	#	%	AU	I	NA	NC	P	W	WF	WP	#	%	
Education & Human Sciences	Health Education	GR	48	67%	20	28%	3	4%	0	0%	0	0%	0	0	0	0	0	1	0	0	1	1%	72
	Education	GR	66	67%	20	20%	4	4%	4	4%	0	0%	0	4	0	0	0	0	0	1	5	5%	99
	Total		114	67%	40	23%	7	4%	4	2%	0	0%	0	4	0	0	0	1	0	1	6	4%	171
Nursing & Speech Language Pathology	Speech-Language Pathology	GR	31	42%	33	45%	1	1%	0	0%	0	0%	0	0	0	0	0	4	0	4	8	11%	73
	Graduate Nursing	GR	82	60%	36	26%	3	2%	0	0%	0	0%	3	3	0	0	0	0	1	8	15	11%	136
	Total		113	54%	69	33%	4	2%	0	0%	0	0%	3	3	0	0	0	4	1	12	23	11%	209
Total			227	54%	109	33%	11	2%	4	0%	0	0%	3	7	0	0	0	5	1	13	23	11%	380

Table 3: Grade Distribution By College and Department Fall 2006

College	Department	UG/GR	A		B		C		D		F		Other								Other Total		Total
			#	%	#	%	#	%	#	%	#	%	AU	I	NA	NC	P	W	WF	WP	#	%	
Arts & Sciences	Communication	UG	163	50%	96	30%	27	8%	5	2%	17	5%	1	0	0	0	0	7	2	5	15	5%	323
	History, Political Science,	UG	254	28%	259	29%	190	21%	60	7%	75	8%	1	0	0	0	0	15	13	27	56	6%	894
	Languages, Literature and	UG	433	37%	356	31%	165	14%	36	3%	52	4%	3	4	1	48	0	12	15	34	117	10%	1159
	Music and Theatre	UG	239	57%	96	23%	30	7%	13	3%	18	4%	2	2	0	0	0	1	6	9	20	5%	416
	Science and Mathematics	UG	360	21%	417	24%	317	18%	185	11%	244	14%	5	1	1	6	65	29	13	106	226	13%	1749
	Art and Design	UG	190	46%	135	33%	37	9%	8	2%	24	6%	4	0	1	0	0	5	0	6	16	4%	410
	Total			1639	33%	1359	27%	766	15%	307	6%	430	9%	16	7	3	54	65	69	49	187	450	9%
Business	Accounting and MIS	UG	201	43%	104	22%	67	14%	29	6%	42	9%	1	3	0	0	0	5	4	9	22	5%	465
	Business Administration	UG	93	27%	113	32%	72	21%	18	5%	38	11%	0	4	1	0	0	2	2	6	15	4%	349
	Total		294	36%	217	27%	139	17%	47	6%	80	10%	1	7	1	0	0	7	6	15	37	5%	814
Culinary Arts	Culinary Arts Institute	UG	95	37%	49	19%	42	16%	8	3%	29	11%	0	2	0	0	29	4	1	0	36	14%	259
	Total		95	37%	49	19%	42	16%	8	3%	29	11%	0	2	0	0	29	4	1	0	36	14%	259

College	Department	UG/GR	A		B		C		D		F		Other							Other Total		Total		
			#	%	#	%	#	%	#	%	#	%	AU	I	NA	NC	P	W	WF	WP	#		%	
Education & Human Sciences	Education	GR	66	67%	20	20%	4	4%	4	4%	0	0%	0	4	0	0	0	0	0	0	1	5	5%	99
	Health and Kinesiology	UG	507	63%	141	17%	62	8%	13	2%	39	5%	10	0	0	0	0	12	7	19	48	6%	810	
	Health Education	GR	48	67%	20	28%	3	4%	0	0%	0	0%	0	0	0	0	0	1	0	0	1	1%	72	
	Psychology and Family Studies	UG	246	25%	298	31%	224	23%	87	9%	59	6%	1	5	0	0	0	17	11	25	59	6%	973	
	Education	UG	493	67%	123	17%	39	5%	22	3%	24	3%	0	5	1	1	0	11	5	17	40	5%	741	
	Total			1360	50%	602	22%	332	12%	126	5%	122	5%	11	14	1	1	0	41	23	62	153	6%	2695
Nursing & Speech Language Pathology	Associate Nursing	UG	200	46%	80	18%	112	26%	16	4%	11	3%	0	0	0	0	0	0	4	14	18	4%	437	
	Baccalaureate Nursing	UG	157	24%	200	31%	100	15%	10	2%	5	1%	0	7	0	0	151	13	2	3	176	27%	648	
	Graduate Nursing	GR	82	60%	36	26%	3	2%	0	0%	0	0%	3	3	0	0	0	0	1	8	15	11%	136	
	Speech-Language Pathology	UG	81	58%	35	25%	15	11%	4	3%	1	1%	0	0	0	0	0	0	0	4	4	3%	140	
		GR	31	42%	33	45%	1	1%	0	0%	0	0%	0	0	0	0	0	4	0	4	8	11%	73	
Total			551	38%	384	27%	231	16%	30	2%	17	1%	3	10	0	0	151	17	7	33	221	15%	1434	
University	University Classes	UG	239	40%	39	7%	13	2%	12	2%	21	4%	0	0	0	71	175	11	2	16	275	46%	599	
Total			239	40%	39	7%	13	2%	12	2%	21	4%	0	0	0	71	175	11	2	16	275	46%	599	
Total			4178	40%	2650	7%	1523	2%	530	2%	699	4%	31	40	5	126	420	149	88	313	275	46%	10752	

**Table 04:
Part A:
Undergraduate Unduplicated Enrollment
Fall 2006**

Ethnicity	Full-time		Full-time Total	Part-time		Part-time Total	Grand Total
	Male	Female		Male	Female		
White	179	960	1139	91	223	314	1453
African American	46	487	533	15	188	203	736
American Indian	1	6	7	0	1	1	8
Asian	4	22	26	5	13	18	44
Hispanic	3	9	12	6	2	8	20
Non-resident Alien	2	15	17	0	2	2	19
Grand Total	235	1499	1734	117	429	546	2280

**Table 04:
Part B:
Graduate Unduplicated Enrollment
Fall 2006**

Ethnicity	Full-Time		Full-Time Total	Part-time		Part-time Total	Grand Total
	Male	Female		Male	Female		
White	5	54	59	6	44	50	109
African American	1	10	11	4	22	26	37
Asian	0	1	1	0	1	1	2
Grand Total	6	65	71	10	67	77	148

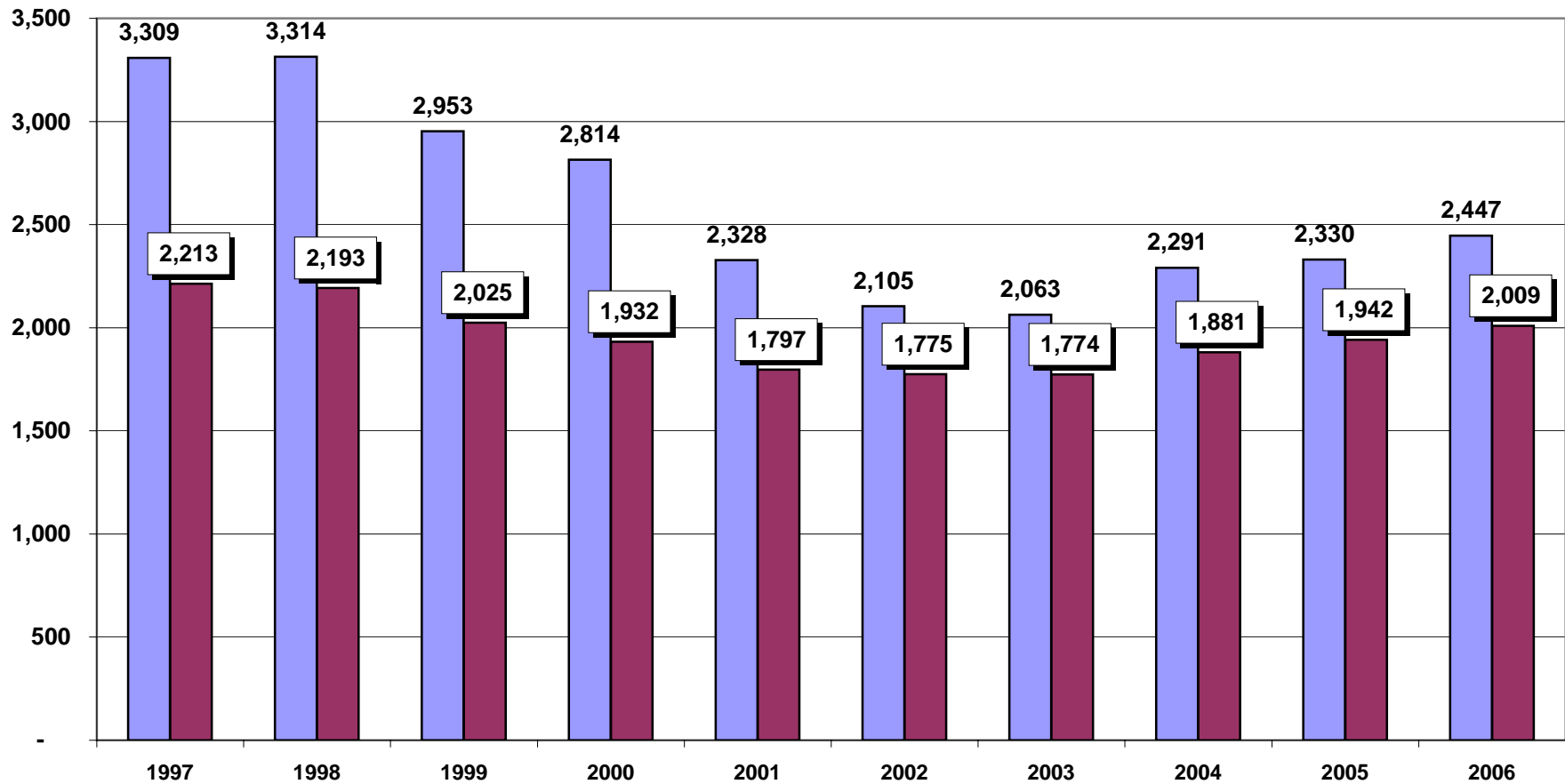
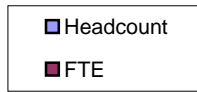
**Table 04:
Part C:
Total Undergraduate & Graduate Unduplicated Enrollment
Fall 2006**

Ethnicity	Full-time		Full-time Total	Part-time		Part-time Total	Grand Total
	Male	Female		Male	Female		
White	184	1014	1198	97	267	364	1562
African American	47	497	544	19	210	229	773
American Indian	1	6	7	0	1	1	8
Asian	4	23	27	5	14	19	46
Hispanic	3	9	12	6	2	8	20
Non-resident Alien	2	15	17	0	2	2	19
Grand Total	241	1564	1805	127	496	623	2428

Table 5: Duplicated Headcount and FTE Enrollment**Fall Terms**

Fall	Headcount	% Change Year Ago	Total Cr. Hrs.	% Change Year Ago	Total FTE	% Change Year Ago
1996	3,277		32,237		2,194	
1997	3,309	0.98%	33,004	2.38%	2,213	0.87%
1998	3,314	0.15%	30,996	-6.08%	2,193	-0.90%
1999	2,953	-10.89%	29,212	-5.76%	2,025	-7.68%
2000	2,814	-4.71%	27,785	-4.88%	1,932	-4.57%
2001	2,328	-17.27%	26,370	-5.09%	1,797	-6.97%
2002	2,105	-9.58%	26,356	-0.05%	1,775	-1.24%
2003	2,063	-2.00%	26,352	-0.02%	1,774	-0.06%
2004	2,291	11.05%	27,899	5.87%	1,881	6.03%
2005	2,330	1.70%	28,765	3.10%	1,942	3.24%
2006	2,447	5.02%	29,837	3.73%	2,009	3.45%

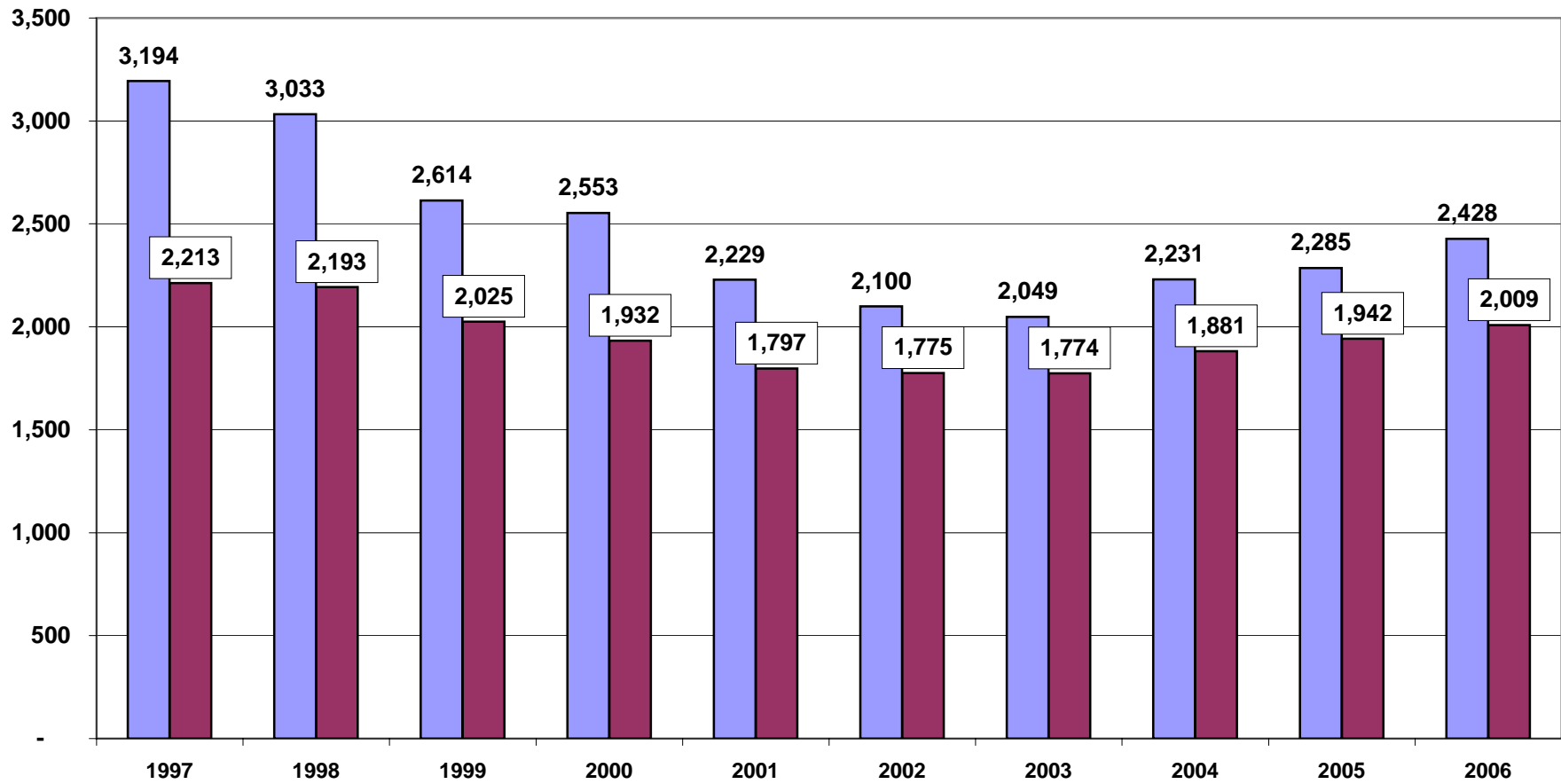
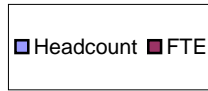
Duplicated Headcount and FTE Enrollment Fall Terms



**Table 5a: UNDUPLICATED HEADCOUNT and FTE ENROLLMENT
Fall Terms**

Fall	Headcount	% Change Year Ago	Total Cr. Hrs.	% Change Year Ago	Total FTE	% Change Year Ago
1996	3,002		32,237		2,194	
1997	3,194	6.40%	33,004	2.38%	2,213	0.87%
1998	3,033	-5.04%	30,996	-6.08%	2,193	-0.90%
1999	2,614	-13.81%	29,212	-5.76%	2,025	-7.68%
2000	2,553	-2.33%	27,785	-4.88%	1,932	-4.57%
2001	2,229	-12.69%	26,370	-5.09%	1,797	-6.97%
2002	2,100	-5.79%	26,356	-0.05%	1,775	-1.24%
2003	2,049	-2.43%	26,352	-0.02%	1,774	-0.06%
2004	2,231	8.88%	27,899	5.87%	1,881	6.03%
2005	2,285	2.42%	28,765	3.10%	1,942	3.24%
2006	2,428	6.26%	29,837	3.73%	2,009	3.45%

Unduplicated Headcount and FTE Enrollment Fall Terms

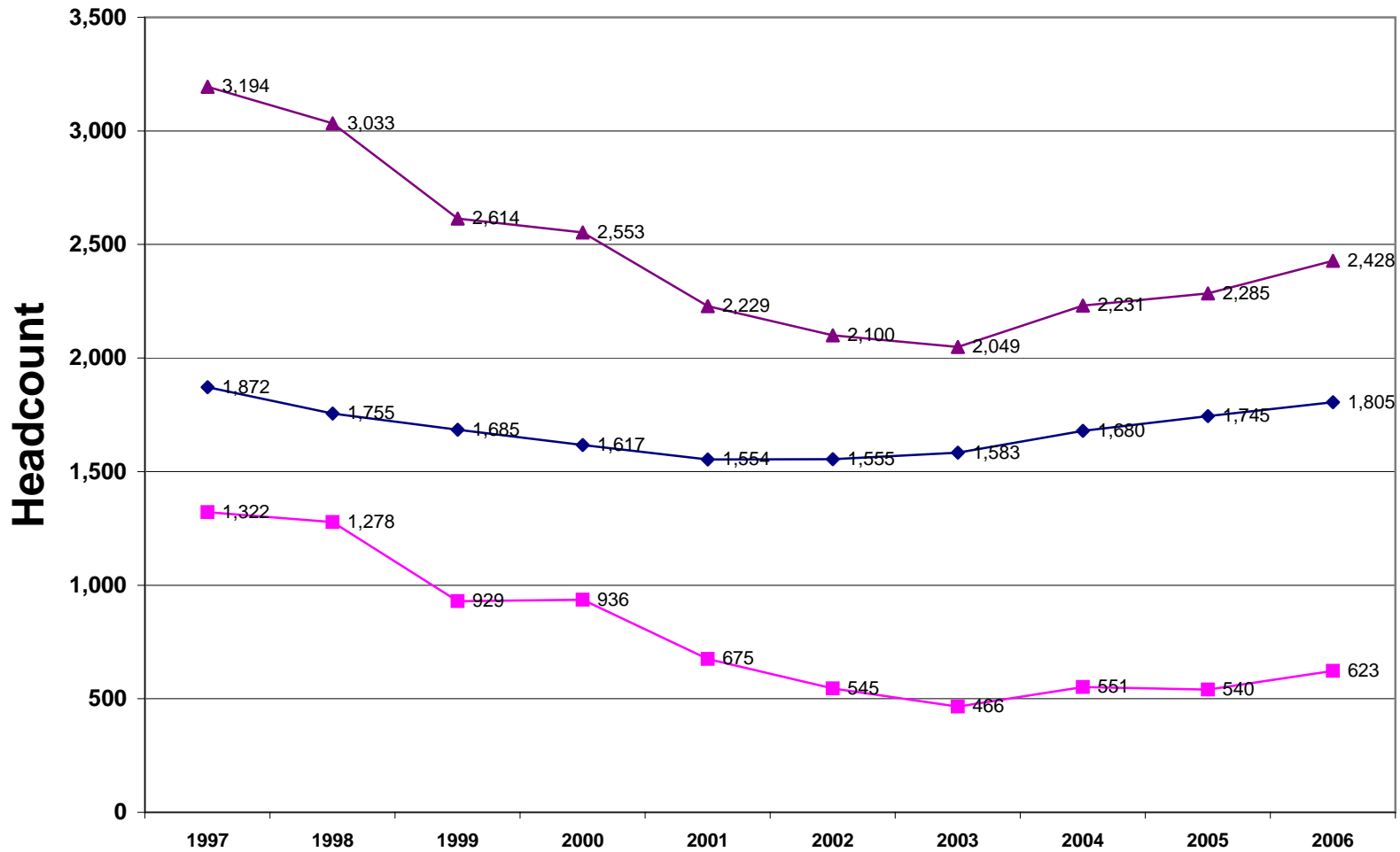
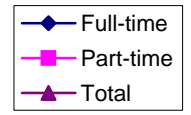


**Table 6: Unduplicated Enrollment & Credit Hour Production by Full-time/Part-time Status
Fall Terms**

Fall	Headcount											Credit Hours by Student Level										
	Full-time					Part-time					Total	Full-time					Part-time					Total
	UG	GR	Total	UG	GR	Total	UG	GR	Total	UG	GR	Total	UG	GR	Total	UG	GR	Total				
1997	1822	57%	50	2%	1872	1143	36%	179	6%	1322	3194	27682	84%	598	2%	28280	4259	13%	465	1%	4724	33004
1998	1698	56%	57	2%	1755	1220	40%	58	2%	1278	3033	25896	84%	674	2%	26570	4203	14%	223	1%	4426	30996
1999	1626	62%	59	2%	1685	808	31%	121	5%	929	2614	24713	85%	698	2%	25411	3370	12%	431	1%	3801	29212
2000	1551	61%	66	3%	1617	858	34%	78	3%	936	2553	23511	85%	759	3%	24270	3182	11%	333	1%	3515	27785
2001	1484	67%	70	3%	1554	588	26%	87	4%	675	2229	22650	86%	781	3%	23431	2552	10%	387	1%	2939	26370
2002	1494	71%	61	3%	1555	462	22%	83	4%	545	2100	22811	87%	678	3%	23489	2476	9%	391	1%	2867	26356
2003	1527	75%	56	3%	1583	390	19%	76	4%	466	2049	23148	88%	674	3%	23822	2205	8%	325	1%	2530	26352
2004	1609	72%	71	3%	1680	454	20%	97	4%	551	2231	24100	86%	859	3%	24959	2493	9%	447	2%	2940	27899
2005	1668	73%	77	3%	1745	447	20%	93	4%	540	2285	24848	86%	1,008	4%	25856	2424	8%	485	2%	2909	28765
2006	1734	71%	71	3%	1805	546	22%	77	3%	623	2428	25541	86%	821	3%	26,362	3110	10%	365	1%	3475	29837

Note 1: Part-time is defined as UG enrolled 11 Cr. hrs or less or GR enrolled 8 Cr. Hrs or less.
Note 2: Full-time is defined as UG enrolled 12 Cr. Hrs or more or GR enrolled 9 Cr. Hrs or more.
Note 3: FT and PT headcount and credit hours data are based on the 10th day of Enrollment.

Full-time & Part-time Unduplicated Headcount Fall Terms



**Table 7: Unduplicated Enrollment by Gender
FALL 1997 to FALL 2006**

Fall	Total	% Change		No. Female	% Female	No. Male	% Male
		Year Ago					
1997	3,194			2,678	83.84%	516	16.16%
1998	3,033	-5.04%		2,513	82.86%	520	17.14%
1999	2,614	-13.81%		2,190	83.78%	424	16.22%
2000	2,553	-2.33%		2,180	85.39%	373	14.61%
2001	2,229	-12.69%		1,905	85.46%	324	14.54%
2002	2,100	-5.79%		1,799	85.67%	301	14.33%
2003	2,049	-2.43%		1,756	85.70%	293	14.30%
2004	2,231	8.88%		1,892	84.81%	339	15.19%
2005	2,285	2.42%		1,936	84.73%	349	15.27%
2006	2,428	6.26%		2,060	84.84%	368	15.16%

Unduplicated Enrollment by Gender Fall terms

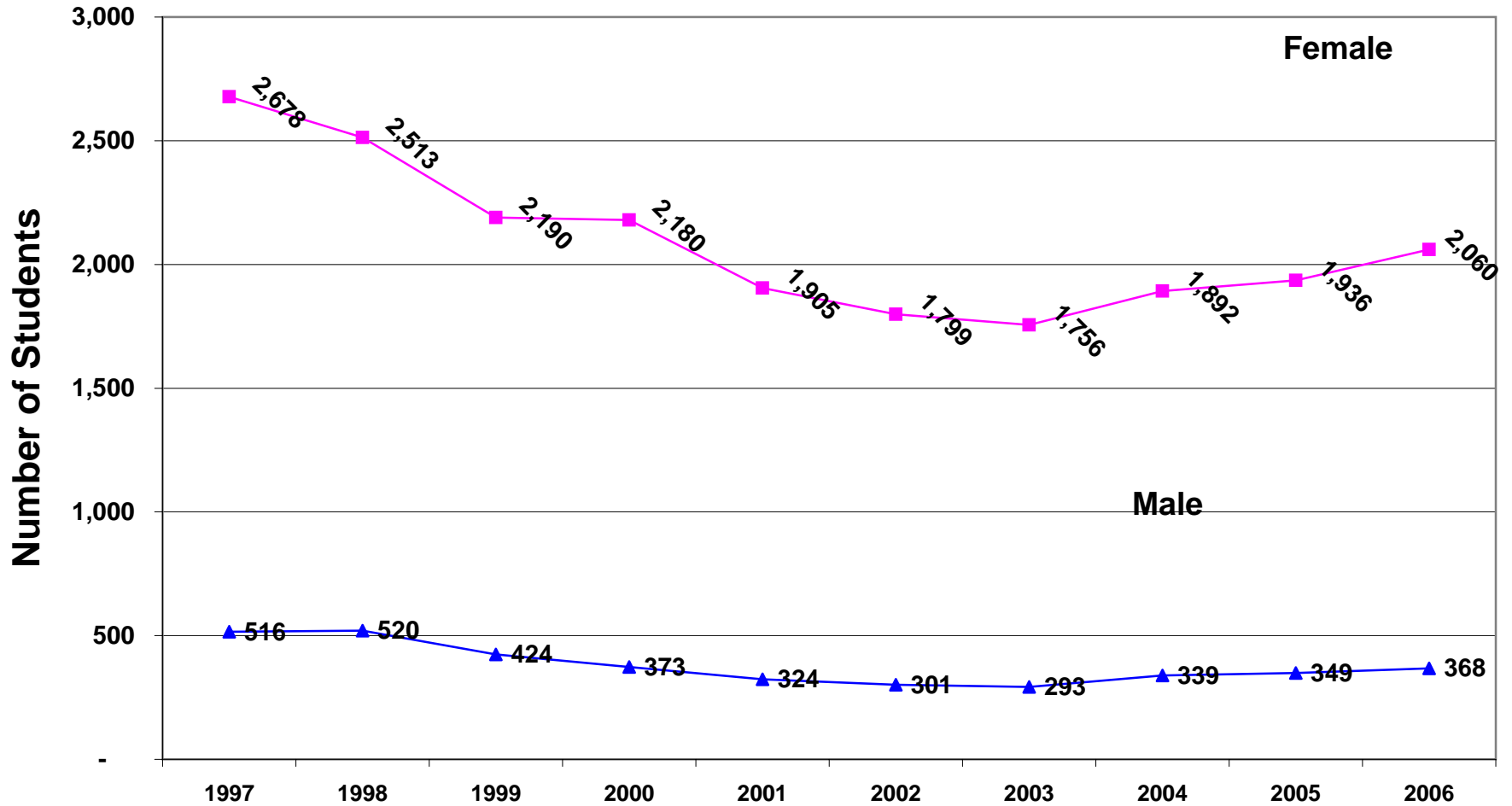


TABLE 8: Unduplicated Enrollment by Ethnicity

Fall 1997-2006

Fall	White		African American		American Indian		Asian		Hispanic		Not Ident.		Total	
	#	%	#	%	#	%	#	%	#	%	#	%	#	%
1997	2,235	70.0%	872	27.3%	6	0.2%	15	0.5%	14	0.4%	52	1.6%	3,194	100%
1998	2,124	70.0%	816	26.9%	7	0.2%	8	0.3%	18	0.6%	60	2.0%	3,033	100%
1999	1,825	69.8%	698	26.7%	3	0.1%	11	0.4%	17	0.7%	60	2.3%	2,614	100%
2000	1,789	70.1%	683	26.8%	5	0.2%	9	0.4%	13	0.5%	54	2.1%	2,553	100%
2001	1,531	68.7%	621	27.9%	9	0.4%	17	0.8%	15	0.7%	36	1.6%	2,229	100%
2002	1,430	68.1%	589	28.0%	8	0.4%	14	0.7%	17	0.8%	42	2.0%	2,100	100%
2003	1,356	66.2%	617	30.1%	7	0.3%	24	1.2%	13	0.6%	32	1.6%	2,049	100%
2004	1,434	64.3%	710	31.8%	11	0.5%	28	1.3%	15	0.7%	33	1.5%	2,231	100%
2005	1,514	66.3%	694	30.4%	7	0.3%	31	1.4%	15	0.7%	24	1.1%	2,285	100%
2006	1,562	64.3%	773	31.8%	8	0.3%	46	1.9%	20	0.8%	19	0.8%	2,428	100%

Unduplicated Enrollment by Ethnicity Fall Terms

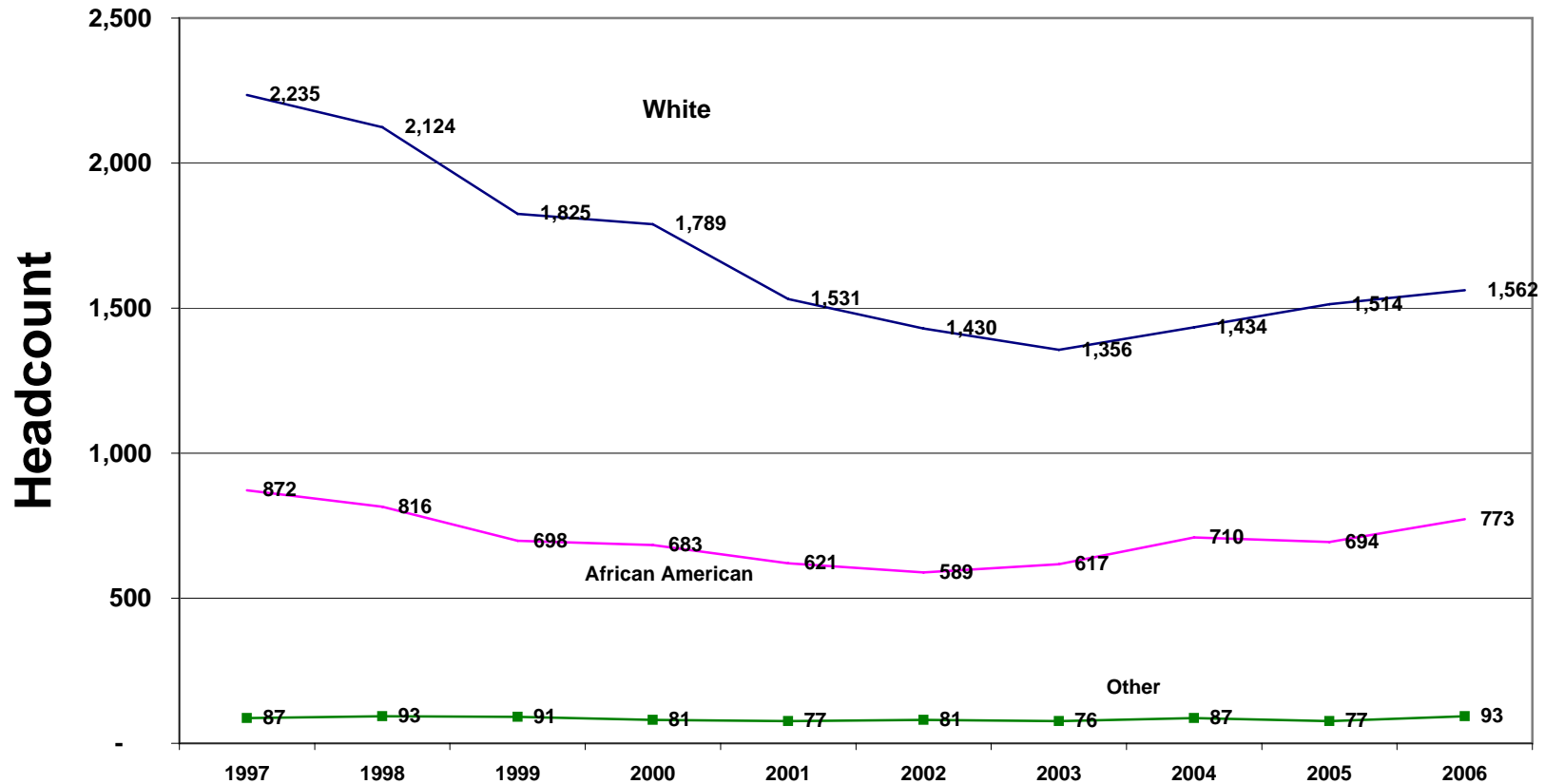


Table 9
Class Type Enrollment

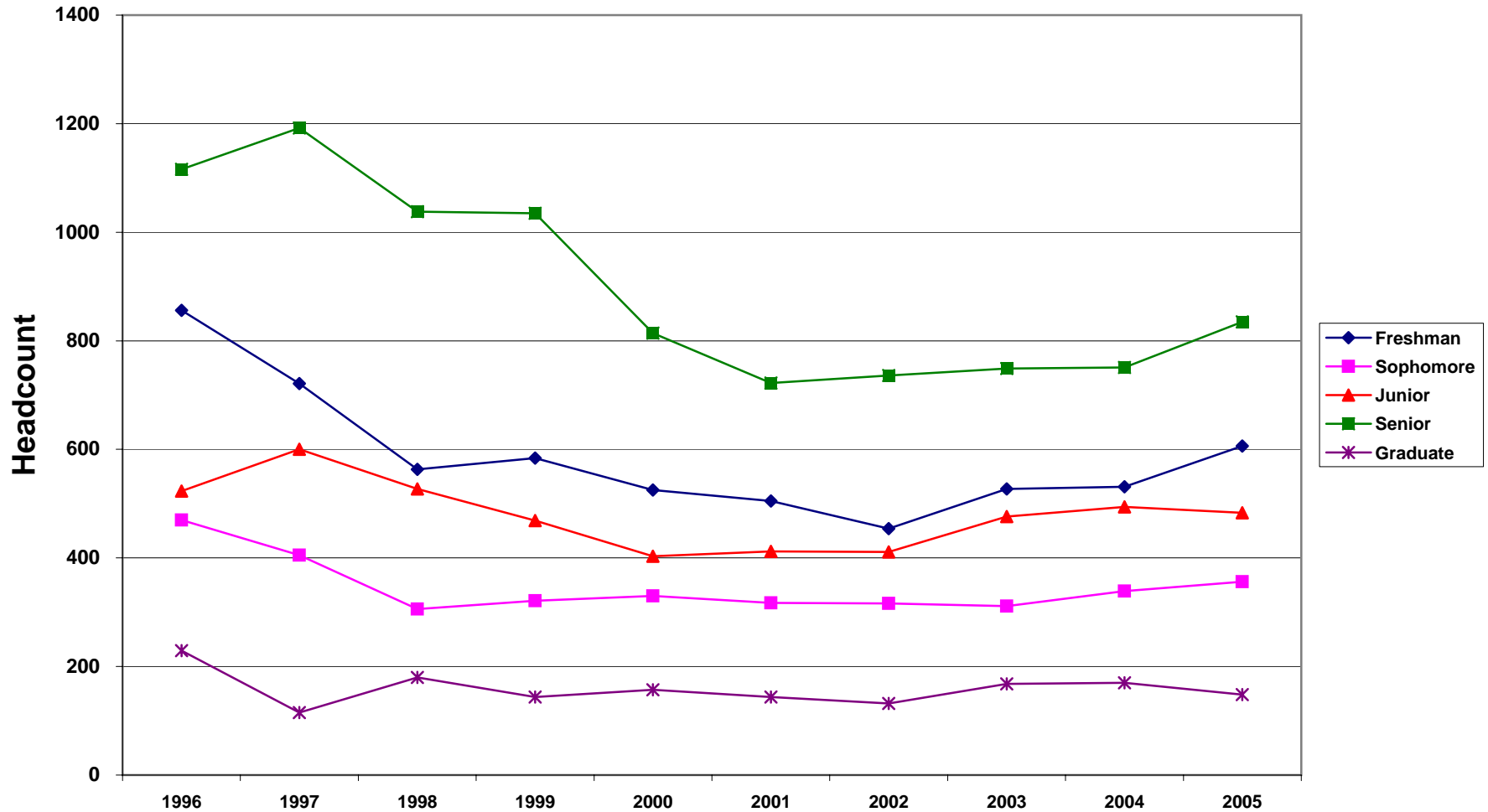
	Fall 2001	Fall 2002	Fall 2003	Fall 2004	Fall 2005	Fall 2006
Day Classes	2040	1848	1821	1962	2082	2150
Night Classes	1040	1119	950	1055	1071	929
Weekend Classes	73	70	99	113	112	51
On-line Classes	66	57	160	223	290	332

***Students may be enrolled in more than one class type,
but headcount is unduplicated within class type.**

**TABLE 10: Unduplicated Enrollment by Student Classification
FALL TERMS**

Fall	Freshman	Sophomore	Junior	Senior	Graduate	Total
1997	856	470	523	1,116	229	3,194
1998	721	405	600	1,192	115	3,033
1999	563	306	527	1,038	180	2,614
2000	584	321	469	1,035	144	2,553
2001	525	330	403	814	157	2,229
2002	505	317	412	722	144	2,100
2003	454	316	411	736	132	2,049
2004	527	311	476	749	168	2,231
2005	531	339	494	751	170	2,285
2006	606	356	483	835	148	2,428

Unduplicated Enrollment by Student Classification Fall Terms



**Table 11: Non-traditional Students Vs. Traditional Students
Unduplicated Headcount - Fall Terms**

	Non-traditional						Traditional						Both Trad. & Non-trad.	
	FT		PT		Total		FT		PT		Total			Total
	HC	%	HC	%	HC	%	HC	%	HC	%	HC	%		
Fall 1996	410	13.66%	991	33.01%	1401	46.67%	1431	47.67%	170	5.66%	1601	53.33%	3002	
Fall 1997	454	14.21%	1105	34.60%	1559	48.81%	1418	44.40%	217	6.79%	1635	51.19%	3194	
Fall 1998	418	13.78%	977	32.21%	1395	45.99%	1337	44.08%	301	9.92%	1638	54.01%	3033	
Fall 1999	401	15.34%	713	27.28%	1114	42.62%	1284	49.12%	216	8.26%	1500	57.38%	2614	
Fall 2000	404	15.82%	711	27.85%	1115	43.67%	1213	47.51%	225	8.81%	1438	56.33%	2553	
Fall 2001	394	17.68%	584	26.20%	978	43.88%	1160	52.04%	91	4.08%	1251	56.12%	2229	
Fall 2002	372	17.71%	368	17.52%	740	35.24%	1183	56.33%	177	8.43%	1360	64.76%	2100	
Fall 2003	405	19.77%	321	15.67%	726	35.43%	1178	57.49%	145	7.08%	1323	64.57%	2049	
Fall 2004	470	21.07%	381	17.08%	851	38.14%	1210	54.24%	170	7.62%	1380	61.86%	2231	
Fall 2005	464	20.31%	357	15.62%	821	35.93%	1281	56.06%	183	8.01%	1464	64.07%	2285	
Fall 2006	459	18.90%	351	14.46%	810	33.36%	1346	55.44%	272	11.20%	1618	66.64%	2428	

*Non-traditional Students are defined as those who are at least 25 years of age.

**HC = Headcount

*** Part-time is defined as UG enrolled 11 Cr. hrs or less or GR enrolled 8 Cr. Hrs or less

****Full-time is defined as UG enrolled 12 Cr. Hrs or more or GR enrolled 9 Cr. Hrs or more.

Non-traditional Vs. Traditional Students Unduplicated Headcount - Fall Terms

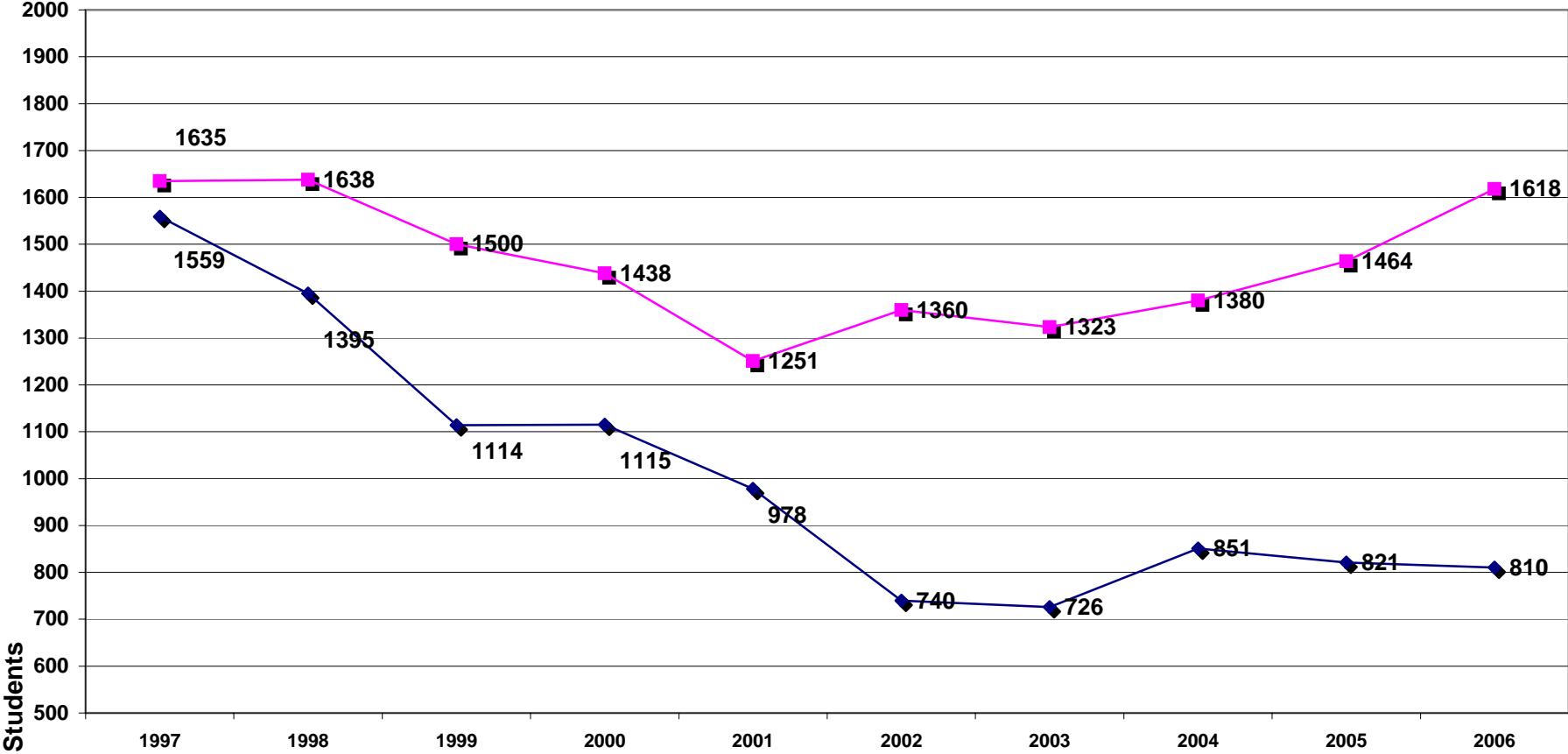
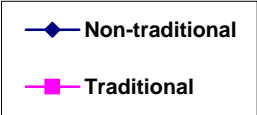


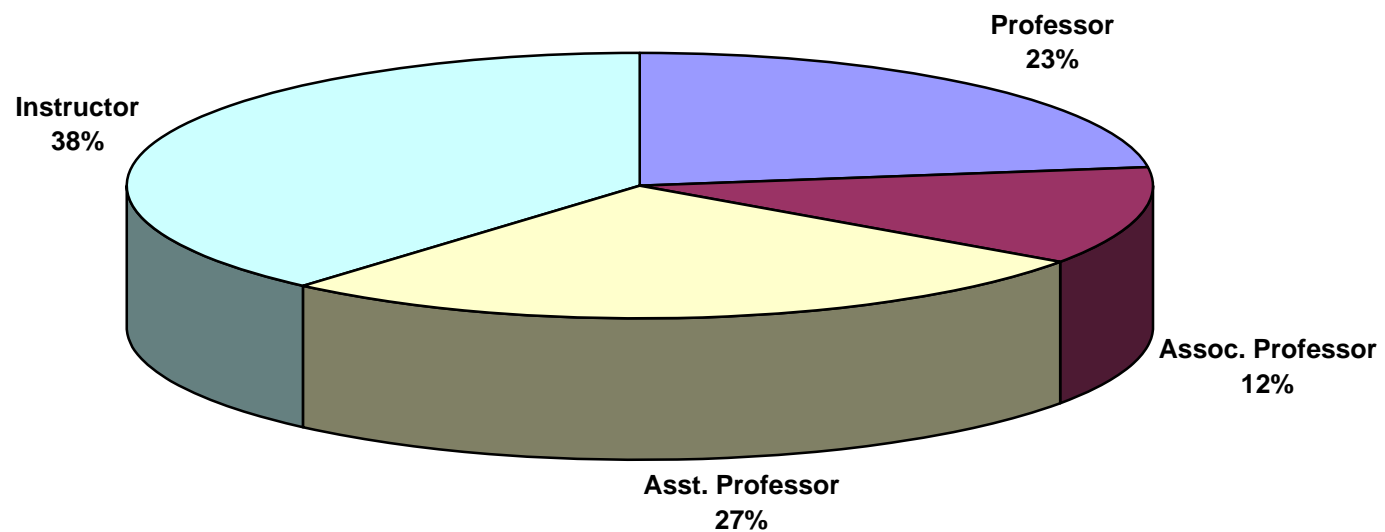
TABLE 12: Faculty Profile

Fall	Number				Full-time Faculty by Rank				Full-time Faculty by Degree				F-T Fac by Sex		F-T Fac by Race			F-T Fac Contract	
	Sem.	Ft-Time	Admin.	Pt-Time	Total	Prof.	Asso.	Asst.	Inst.	Terminal	SPEC.	MSTR.	BACH.	Male	Female	Black	White	Other	ACAD
1997	128	4	69	201	27	18	61	22	81	2	44	1	50	78	3	120	5	105	23
1998	129	4	77	210	26	21	58	24	88	0	40	1	47	82	1	123	5	104	25
1999	132	4	80	216	28	22	55	27	92	0	40	0	52	80	2	128	2	105	27
2000	139	4	81	224	31	29	53	26	99	0	40	0	54	85	3	132	4	117	22
2001	134	4	80	218	31	27	44	32	93	0	40	1	53	81	6	123	5	103	31
2002	129	4	79	212	32	28	40	29	89	0	40	0	49	80	7	118	4	99	30
2003	131	5	61	197	33	23	36	39	85	0	46	0	48	83	5	123	3	104	27
2004	133	5	46	184	33	21	35	44	80	0	53	0	50	83	4	125	4	106	27
2005	136	5	66	207	35	21	34	46	81	0	53	2	50	86	4	127	5	110	26
2006	132	9	66	207	30	16	35	51	74	0	56	2	49	83	6	122	4	106	26

SOURCE: Office of Academic Affairs

***The number of administrators with faculty status increased in Fall 2006 due to the EEOC re-classification of four deans and two other administrators.**

Full-time Faculty Profile - Fall 2006



Total number of full-time faculty = 132

Table 13: Headcount Enrollment by Credit Hours and Student Classification

Fall 2006

<i>Credit Hours</i>	<i>FR</i>	<i>SO</i>	<i>JR</i>	<i>SR</i>	<i>GR</i>	<i>Total</i>	<i>%</i>	<i>Cum%</i>
1	5	3	1	6	0	15	0.6%	0.6%
2	1	0	0	3	0	4	0.2%	0.8%
3	113	6	5	50	31	205	8.4%	9.2%
4	4	3	2	8	3	20	0.8%	10.0%
5	0	1	0	0	0	1	0.0%	10.1%
6	77	10	22	66	41	216	8.9%	19.0%
7	3	5	5	8	2	23	0.9%	19.9%
8	0	0	2	6	0	8	0.3%	20.3%
9	19	9	18	44	18	108	4.4%	24.7%
10	1	5	7	17	4	34	1.4%	26.1%
11	1	2	3	5	1	12	0.5%	26.6%
12	36	66	112	161	18	393	16.2%	42.8%
13	62	33	52	66	29	242	10.0%	52.8%
14	71	31	30	35	0	167	6.9%	59.6%
15	70	69	104	122	1	366	15.1%	74.7%
16	67	59	52	93	0	271	11.2%	85.9%
17	50	25	18	39	0	132	5.4%	91.3%
18	19	15	35	71	0	140	5.8%	97.1%
19	4	13	15	33	0	65	2.7%	99.8%
20	2	0	0	0	0	2	0.1%	99.8%
21	1	1	0	2	0	4	0.2%	100.0%
	606	356	483	835	148	2428	100.00%	

**Table 14: Age Distribution by Student Classification
Unduplicated Headcount**

Age Group	Freshman		Sophomore		Junior		Senior		Graduate		Total	
	FA 2006	FA 2005	FA 2006	FA 2005	FA 2006	FA 2005	FA 2006	FA 2005	FA 2006	FA 2005	FA 2006	FA 2005
Under 18	182	104	0	1	0	0	0	0	0	0	182	105
18 and 19	317	277	119	117	9	10	1	1	0	0	446	405
20 and 21	29	36	131	117	241	239	172	162	0	1	573	555
22 to 24	17	23	34	26	74	92	257	224	35	34	417	399
25 to 29	16	31	26	34	62	49	151	118	32	46	287	278
30 to 34	10	18	14	16	35	42	84	80	22	35	165	191
35 to 39	14	15	10	6	22	25	62	51	21	19	129	116
40 to 49	13	13	13	16	32	31	67	69	34	31	159	160
50 to 64	8	9	8	6	8	6	35	42	4	4	63	67
65 and Over	0	5	1	0	0	0	6	4	0	0	7	9
Unknown	0	0	0	0	0	0	0	0	0	0	0	0
Total	606	531	356	339	483	494	835	751	148	170	2,428	2,285

	Fall 2006	Fall 2005
Average Age	25.15	25.7
Average Age Men	24.73	25.5
Average Age Women	25.22	25.8

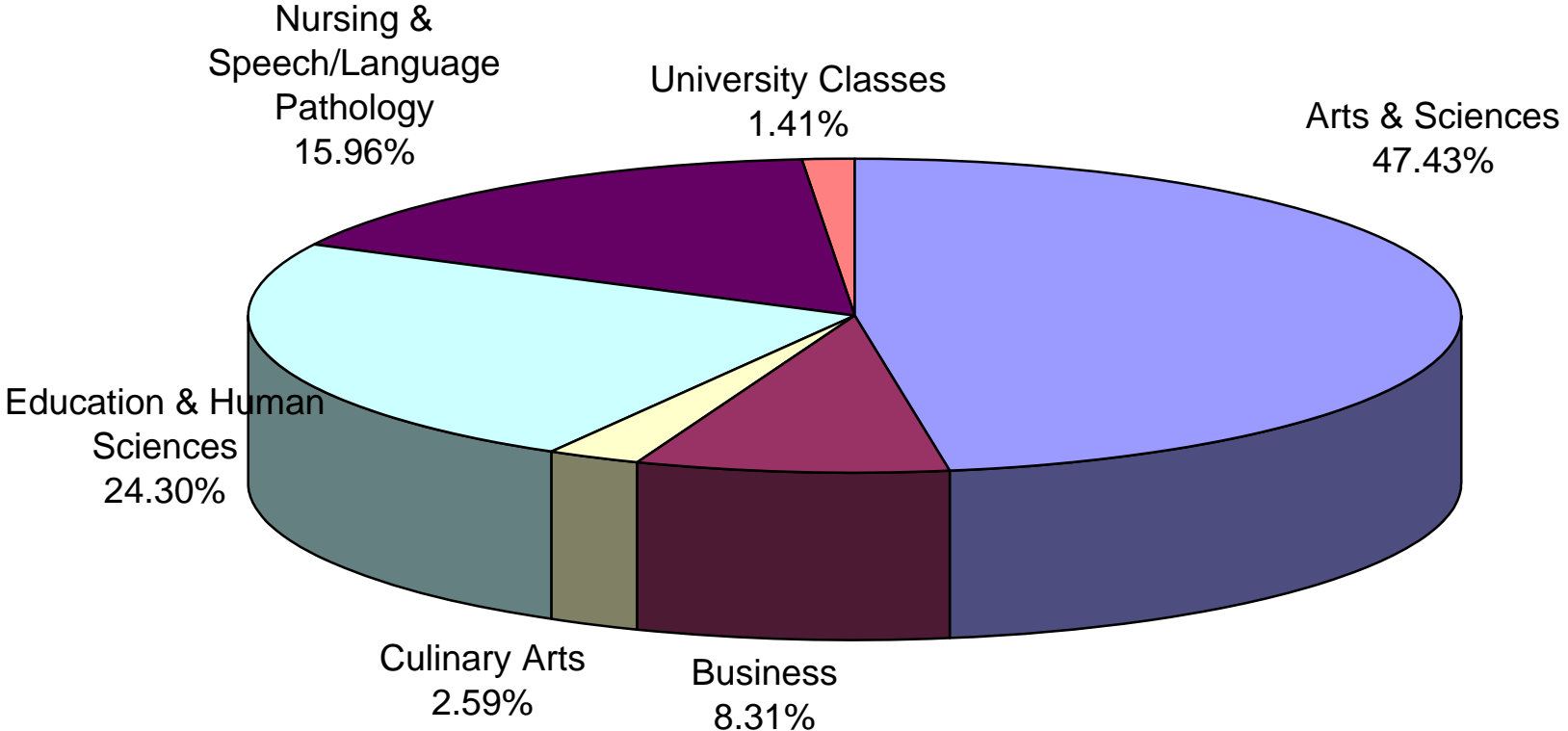
Table 15: Credit Hour Generation by College & Department

Program	Su 03	Fall 03	Spring 04	03-04 Total	Su 04	Fall 04	Spring 05	04-05 Total	SU 05	FA 05	SP 06	05-06 Total	SU 06	FA 06
Art & Design	42	1233	1338	2613	102	1233	1176	2511	12	1221	1095	2328	116	1215
Communication	135	971	923	2029	193	1019	958	2170	189	852	693	1734	84	912
History, Political Science, Geography, & Paralegal	474	1905	2031	4410	501	2193	2385	5079	683	2481	2262	5426	420	2637
Honors	309	136	130	575	353	115	107	575	392	142	138	672	327	143
Languages, Literature, & Philosophy	1013	3132	3108	7253	1094	3159	3074	7327	1018	3441	3369	7828	895	3506
Music & Theatre	98	785	860	1743	120	796	882	1798	56	803	806	1665	57	887
Science & Mathematics	818	3628	3922	8368	842	4162	4166	9170	1085	4168	3763	9016	575	4517
Arts & Sciences College Total	2889	11790	12312	26991	3205	12677	12748	28630	3435	13108	12126	28669	2474	13817
Accounting & MIS	66	1239	896	2201	186	1107	1212	2505	306	1236	1239	2781	237	1380
Business Administration	249	1275	1209	2733	249	1089	1047	2385	201	1134	1206	2541	396	1041
Business College Total	315	2514	2105	4934	435	2196	2259	4890	507	2370	2445	5322	633	2421
Culinary Arts Total	72	585	702	1359	151	728	709	1588	193	744	875	1812	159	754
Education	630	2,337	2,154	5121	618	2,457	2,547	5622	765	2514	2277	5556	804	2598
Health & Kinesiology	247	1,138	1,238	2623	141	1,198	1,155	2494	260	1300	1399	2959	281	1455
Health Education	45	66	138	249	298	189	231	718	195	219	194	608	207	237
Psychology & Family Studies	574	2,244	2,322	5140	618	2,413	2,675	5706	601	2511	2700	5812	438	2791
Education & Human Sciences College Total	1496	5785	5852	13133	1675	6257	6608	14540	1821	6544	6570	14935	1730	7081

Program	Su 03	Fall 03	Spring 04	03-04 Total	Su 04	Fall 04	Spring 05	04-05 Total	SU 05	FA 05	SP 06	05-06 Total	SU 06	FA 06
Associate of Science in Nursing	109	1,197	1,111	2417	102	1,115	1,082	2299	63	1039	1071	2173	116	1175
Bachelor of Science in Nursing	627	1,848	1,850	4325	847	2,166	1,796	4809	1020	2041	1917	4978	708	2325
Master of Science in Nursing	391	407	392	1190	305	484	540	1329	521	550	615	1686	505	433
Nursing	17	253	46	316	85	109	4	198	100	166	128	394	268	95
Speech/Language Pathology	79	565	526	1170	115	667	538	1320	134	721	507	1362	49	621
Nursing & Speech/Language Pathology College Total	1223	4270	3925	9418	1454	4541	3960	9955	1838	4517	4238	10593	1646	4649
University Classes	2	334	103	439	18	475	203	696	15	450	207	672	12	412
Totals	5997	25278	24999	56274	6938	26874	26487	60,299	7809	27733	26461	62003	6654	29134

*ROTC Classes are excluded

CREDIT HOUR GENERATION BY COLLEGE - Fall 2006



**Table 16: Enrollment by Major and Program Type
Unduplicated Count of Registered Students - Fall 2002-2006**

	2002	2003	2004	2005	2006	5 Year	5 Year
	Total	Total	Total	Total	Total	# Change	%Change
Arts & Sciences	466	451	504	482	492	26	5.58%
Art Education	16	17	19	19	21	5	31.25%
Biology	48	45	66	74	82	34	70.83%
Biology-Teacher Certification	6	7	6	6	9	3	50.00%
Broadcasting	4	3	0	0	0	-4	-100.00%
Chemistry	12	14	10	11	8	-4	-33.33%
Communication	16	42	72	48	50	34	212.50%
Communication - Broadcasting	16	8	1	0	0	-16	-100.00%
Communication - Journalism	6	2	0	0	0	-6	-100.00%
Communication-Public Relations	31	6	0	0	0	-31	-100.00%
Drawing & Painting	3	0	0	0	0	-3	-100.00%
English	41	27	32	39	55	14	34.15%
English - Creative Writing	1	7	2	1	1	0	0.00%
English-Teacher Certification	20	19	22	16	14	-6	-30.00%
Fine Art	15	12	4	4	10	-5	-33.33%
Graphic Design	22	17	19	18	23	1	4.55%
History	15	22	16	20	19	4	26.67%
History-Teacher Certification	6	6	8	8	10	4	66.67%
Interior Design	28	34	29	24	17	-11	-39.29%
Journalism	2	1	0	0	0	-2	-100.00%
Mathematics	17	16	19	15	13	-4	-23.53%
Mathematics - Teacher Cert	9	5	13	10	9	0	0.00%
Microbiology	15	11	13	13	9	-6	-40.00%
Music	6	5	3	3	6	0	0.00%
Music - Commercial	3	4	3	0	0	-3	-100.00%
Music Education	9	11	8	10	10	1	11.11%
Music Therapy	5	11	10	10	13	8	160.00%
Paralegal Studies	43	47	53	56	36	-7	-16.28%
Physical Science	5	1	1	0	0	-5	-100.00%
Physical Science-Teacher Cert	2	2	1	1	0	-2	-100.00%
Political Science	15	17	16	20	12	-3	-20.00%
Social Sciences	5	6	15	12	21	16	320.00%
Social Sciences - Teacher Cert	9	9	14	14	14	5	55.56%

	2002	2003	2004	2005	2006	5 Year	5 Year
	Total	Total	Total	Total	Total	# Change	%Change
Spanish	3	2	4	4	2	-1	-33.33%
Spanish - Teaching	0	0	1	0	0	0	NA
Studio Art	8	11	16	13	16	8	100.00%
Theatre	4	4	8	13	12	8	200.00%

<i>Business</i>	250	216	220	214	205	-45	-18.00%
Accounting	69	59	71	76	67	-2	-2.90%
Business Admin - General Bus	50	32	42	38	45	-5	-10.00%
Business Admin - IRM	3	3	1	0	0	-3	-100.00%
Business Admin - Management	34	30	35	34	30	-4	-11.76%
Business Admin - Marketing	28	34	25	27	25	-3	-10.71%
Business Admin - MIS	61	55	45	39	38	-23	-37.70%
Business Admin - Office Admin	4	2	1	0	0	-4	-100.00%
Fashion Merchandising	1	1	0	0	0	-1	-100.00%

<i>Culinary Arts</i>	59	64	75	96	108	49	83.05%
Culinary Arts	59	60	72	96	108	49	83.05%
Culinary Arts Certificate	0	4	3	0	0	0	NA

<i>Education & Human Sciences</i>	554	507	564	601	629	75	13.54%
Differentiated Instruction	0	0	1	8	5	5	NA
Education - MAT	28	16	15	23	18	-10	-35.71%
Elementary Education	261	246	248	269	272	11	4.21%
Exercise Sci-Physical Therapy	10	4	19	24	43	33	330.00%
Family Studies	68	74	77	86	87	19	27.94%
Family Studies - Teaching	6	8	4	5	4	-2	-33.33%
Gifted Studies	17	8	7	10	10	-7	-41.18%
Health Education	8	12	40	37	38	30	375.00%
Instructional Management	13	11	9	2	1	-12	-92.31%
Kinesiology - Recreation	2	0	0	0	0	-2	-100.00%
Kinesiology - Sport Management	6	3	6	9	4	-2	-33.33%
Kinesiology - Teaching	12	7	5	4	13	1	8.33%
Kinesiology-Athletic Training	1	0	0	0	0	-1	-100.00%
Kinesiology-Exercise Science	28	25	28	22	23	-5	-17.86%
Physical Therapy	1	0	0	0	0	-1	-100.00%
Pre-Occupational Therapy	3	4	3	6	2	-1	-33.33%

	2002	2003	2004	2005	2006	5 Year	5 Year
	Total	Total	Total	Total	Total	# Change	%Change
Psychology	79	76	75	78	95	16	20.25%
Reading/Literacy	11	13	27	18	14	3	27.27%

<i>Graduate Unclassified</i>	0	17	4	1	8	8	NA
Unclassified - Graduate	0	17	4	1	8	8	NA

<i>Nursing & Speech Language Pathology</i>	478	475	550	583	575	97	20.29%
Associate of Science Nursing	68	122	121	114	112	44	64.71%
Bachelor of Science Nursing	43	98	103	107	115	72	167.44%
Family Nurse Clinician - MSN	1	0	0	0	1	0	0.00%
Nursing - BSN - Tupelo	0	27	39	37	39	39	NA
Pre-Nursing ASN	77	53	70	72	72	-5	-6.49%
Pre-Nursing BSN	167	83	116	131	131	-36	-21.56%
Pre-Nursing BSN - Tupelo	22	2	1	4	0	-22	-100.00%
Primary Care Family	40	35	39	43	35	-5	-12.50%
Speech/Language Pathology	34	34	35	47	52	18	52.94%
Speech/Language Pathology - MS	26	21	26	28	18	-8	-30.77%

<i>University</i>	293	319	314	308	411	118	40.27%
Undeclared - Undergraduate	293	319	314	308	411	118	40.27%

<i>University Total</i>	2100	2049	2231	2285	2428	328	15.62%
-------------------------	------	------	------	------	------	-----	--------

******In 2002, the student information file was archived before students were moved from Pre-Nursing BSN and Pre-Nursing BSN Tupelo to their respective BSN programs. This caused a lower count for the two BSN programs in that year.**

Table 17: Unduplicated Headcount Enrollment by College

Fall 2004 - Fall 2006

College	Fall 2004		Fall 2005		Fall 2006	
	# Students	% of Total	# Students	% of Total	# Students	% of Total
Arts & Sciences	504	22.59%	482	21.09%	492	20.26%
Business	220	9.86%	214	9.37%	205	8.44%
Culinary Arts	75	3.36%	96	4.20%	108	4.45%
Education & Human Sciences	564	25.28%	601	26.30%	629	25.91%
Nursing & Speech Language Pathology	550	24.65%	583	25.51%	575	23.68%
University	318	14.25%	309	13.52%	419	17.26%
Total	2231	100%	2285	100%	2428	100%

Note: Headcount Enrollment Numbers are Unduplicated

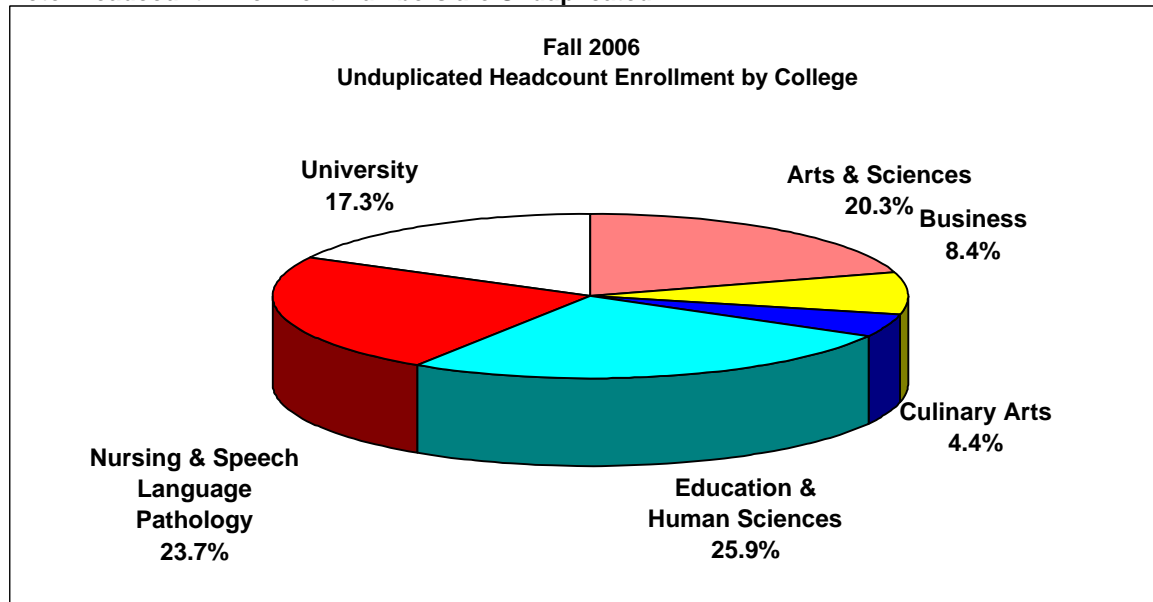


Table 18: Faculty Credit Hour Production by Course Level

Fall 2005 Faculty Terminal Degrees and Student Credit Hours				
	Lower CH	Upper CH	Graduate CH	Total CH
Terminal Degrees	8,585	6,499	1,055	16,139
Non-Terminal Degrees	6,812	4,452	330	11,594
TOTAL	15,397	10,951	1,385	27,733

Fall 2006 Faculty Terminal Degrees and Student Credit Hours				
	Lower CH	Upper CH	Graduate CH	Total CH
Terminal Degrees	8,899	6,687	656	16,242
Non-Terminal Degrees	7,519	4,861	512	12,892
TOTAL	16,418	11,548	1,168	29,134

Fall 2005 Faculty Full-time/Part-time Status and Student Credit Hours				
	Lower CH	Upper CH	Graduate CH	Total CH
Full-time Faculty	12,644	9,398	1,141	23,183
Part-time Faculty	2,753	1,553	244	4,550
TOTAL	15,397	10,951	1,385	27,733

Fall 2006 Faculty Full-time/Part-time Status and Student Credit Hours				
	Lower CH	Upper CH	Graduate CH	Total CH
Full-time Faculty	12,098	10,539	1,063	23,700
Part-time Faculty	4,320	1,009	105	5,434
TOTAL	16,418	11,548	1,168	29,134

Note: For this profile, both Full-time and Part-time faculty are included.

**Table 19: Unduplicated Enrollment by State of Residence
Fall 2002-2006**

<i>State</i>	<i>2002</i>	<i>2003</i>	<i>2004</i>	<i>2005</i>	<i>2006</i>
Alabama	157	122	127	135	122
American Samoa	0	0	0	0	1
Arkansas	3	3	5	6	2
California	0	1	1	2	4
Colorado	3	1	0	0	0
Connecticut	0	0	0	1	0
Delaware	0	0	0	1	0
Florida	7	4	4	4	2
Georgia	3	5	4	6	6
Hawaii	0	0	0	0	1
Illinois	0	0	2	1	0
Indiana	0	1	1	0	1
Kansas	0	0	1	1	1
Kentucky	1	3	4	3	2
Louisiana	10	6	11	11	8
Maine	0	0	0	0	1
Michigan	1	1	0	0	1
Mississippi	1817	1830	1998	2043	2223
Missouri	3	3	3	2	1
New Hampshire	0	0	1	0	0
New Jersey	0	0	0	2	0
New Mexico	2	1	1	1	1
New York	0	1	0	0	0
North Carolina	1	1	1	0	0
Ohio	0	0	3	2	2
Oklahoma	1	0	1	3	1
South Carolina	0	0	0	2	1
Tennessee	36	29	19	23	23
Texas	8	4	7	7	3
Virginia	2	1	3	1	1
Washington	0	2	1	0	1
Wisconsin	1	0	2	1	0
Total U.S. Enrollment	2056	2019	2200	2258	2409

**Table 19A: Enrollment by State of Residence and Classification
Fall 2006**

<i>State</i>	<i>Freshmen</i>	<i>Sophomore</i>	<i>Junior</i>	<i>Senior</i>	<i>Graduate</i>	<i>Total</i>
Alabama	28	24	22	43	5	122
American Samoa	0	0	0	1	0	1
Arkansas	0	2	0	0	0	2
California	2	0	0	2	0	4
Florida	0	0	1	1	0	2
Georgia	1	0	1	4	0	6
Hawaii	0	0	1	0	0	1
Indiana	1	0	0	0	0	1
Kansas	0	0	0	1	0	1
Kentucky	0	0	1	0	1	2
Louisiana	1	0	1	3	3	8
Maine	0	1	0	0	0	1
Michigan	1	0	0	0	0	1
Mississippi	537	316	456	776	138	2223
Missouri	0	0	0	1	0	1
New Mexico	0	0	0	1	0	1
Ohio	0	1	1	0	0	2
Oklahoma	0	0	0	1	0	1
South Carolina	0	0	0	1	0	1
Tennessee	10	5	3	4	1	23
Texas	2	0	0	1	0	3
Virginia	1	0	0	0	0	1
Washington	1	0	0	0	0	1
<i>Total</i>	585	349	487	840	148	2409
<i>Percent of total</i>	24.28%	14.49%	20.22%	34.87%	6.14%	

**Table 20: Unduplicated Headcount Enrollment by Country
Fall 2002-2006**

<i>Country</i>	<i>2002</i>	<i>2003</i>	<i>2004</i>	<i>2005</i>	<i>2006</i>
Albania	0	1	1	0	0
Australia	1	0	0	0	0
Barbados	1	0	0	0	0
Bulgaria	2	1	1	2	1
Cameroon	1	0	0	0	0
China	0	1	1	1	0
Croatia	1	0	0	0	0
Ecuador	0	1	0	0	0
Finland	1	0	0	0	0
France	0	0	0	1	0
Germany	2	0	1	1	0
Ghana	2	2	1	0	0
Honduras	2	1	1	1	1
India	1	0	0	1	0
Indonesia	2	0	0	0	0
Jamaica	0	0	1	1	1
Japan	1	0	1	1	2
Kazakhstan	1	1	0	0	0
Kenya	13	8	7	3	0
Korea, South	0	0	0	1	0
Malaysia	1	0	0	0	0
Moldova	1	0	0	0	0
Nigeria	1	2	5	4	2
Peru	0	0	1	1	0
Romania	1	3	3	3	2
Russia	0	1	1	0	0
Senegal	1	0	0	0	0
Taiwan	1	2	2	1	2
Trinidad and Tobago	1	1	0	1	1
Ukraine	2	2	2	1	0
United Kingdom	1	1	0	0	0
Venezuela	0	0	0	0	1
Vietnam	2	1	2	2	4
Zambia	1	1	0	1	2
<i>Foreign Students</i>	44	30	31	27	19
<i>Countries Represented</i>	25	17	16	18	11

**Table 21: Unduplicated Enrollment by MS County
Fall 2002-2006**

<i>County</i>	<i>2002</i>	<i>2003</i>	<i>2004</i>	<i>2005</i>	<i>2006</i>
Adams	6	6	2	3	4
Alcorn	10	6	7	11	11
Amite	1	4	3	2	0
Attala	13	16	15	18	12
Benton	1	1	2	3	7
Bolivar	9	7	7	8	10
Calhoun	5	4	3	12	11
Carroll	2	2	3	3	4
Chickasaw	34	31	38	36	37
Choctaw	16	12	13	13	12
Claiborne	4	1	1	0	1
Clarke	4	3	4	4	6
Clay	108	114	122	121	122
Coahoma	5	3	1	4	3
Copiah	2	3	2	1	4
Covington	1	2	2	0	0
DeSoto	16	14	27	29	42
Forrest	6	4	5	5	8
Franklin	1	0	0	1	0
George	5	2	1	3	2
Greene	0	0	2	0	2
Grenada	5	7	8	8	8
Hancock	5	6	6	8	6
Harrison	18	24	30	26	37
Hinds	37	40	48	51	59
Holmes	4	10	8	6	3
Humphreys	2	1	1	1	2
Issaquena	0	0	1	1	0
Itawamba	25	20	11	17	22
Jackson	28	27	39	37	48
Jasper	1	3	5	6	5
Jefferson	1	0	1	0	0
Jefferson Davis	1	2	2	2	2
Jones	4	6	4	7	9
Kemper	3	4	6	13	7
Lafayette	6	7	5	5	8

<i>County</i>	<i>2002</i>	<i>2003</i>	<i>2004</i>	<i>2005</i>	<i>2006</i>
Lamar	6	3	9	4	5
Lauderdale	5	9	11	20	27
Lawrence	0	0	0	1	2
Leake	2	2	3	7	11
Lee	63	52	64	64	64
Leflore	2	5	8	5	11
Lincoln	1	4	3	3	3
Lowndes	781	813	846	847	842
Madison	11	17	22	35	48
Marion	1	0	0	0	2
Marshall	7	5	5	5	9
Monroe	146	148	163	152	169
Montgomery	4	7	4	2	4
Neshoba	14	14	18	13	17
Newton	6	7	7	9	12
Noxubee	58	57	57	68	100
Oktibbeha	121	119	124	127	146
Panola	3	3	7	8	7
Pearl River	12	8	9	12	13
Perry	1	0	1	1	1
Pike	5	3	4	3	5
Pontotoc	7	7	11	13	17
Prentiss	14	11	10	8	9
Quitman	0	2	2	2	1
Rankin	23	25	31	32	30
Scott	2	3	4	4	6
Sharkey	0	1	0	0	1
Simpson	0	0	1	0	0
Smith	3	5	2	2	1
Stone	3	1	1	1	0
Sunflower	5	5	9	5	4
Tallahatchie	5	4	3	3	4
Tate	6	6	4	2	5
Tippah	7	5	6	8	6
Tishomingo	8	5	4	3	10
Tunica	2	2	2	0	0
Union	6	4	7	14	16
Walthall	3	1	1	0	0
Warren	7	7	7	12	8
Washington	27	16	27	18	24

<i>County</i>	<i>2002</i>	<i>2003</i>	<i>2004</i>	<i>2005</i>	<i>2006</i>
Wayne	11	4	3	4	6
Webster	12	13	23	13	12
Wilkinson	3	3	1	0	2
Winston	20	27	29	36	37
Yalobusha	2	2	1	5	4
Yazoo	3	3	9	7	8
<i>Total MS Enrollment</i>	1817	1830	1998	2043	2223
<i># Represented</i>	76	74	78	72	73

Table 22: Residence Hall Student Headcount

Residence Hall	Fall 98	Fall 99	Fall 00	Fall 01	Fall 02	Fall 03	Fall 04	Fall 05	Fall 06
Callaway	109	118	111	99	119	103	113	116	94
Columbus	0	0	0	0	50	47	58	46	46
Frazier	64	49	53	59	0	0	0	0	0
Goen	154	150	141	112	53	66	72	35	0
Grossnickle	38	37	38	35	40	39	43	35	37
Hastings-Simmons	42	42	45	49	49	49	54	51	49
Jones	146	138	130	128	133	129	116	105	164
Kincannon	133	137	133	115	143	123	144	166	175
Total	686	671	651	597	587	556	600	554	565

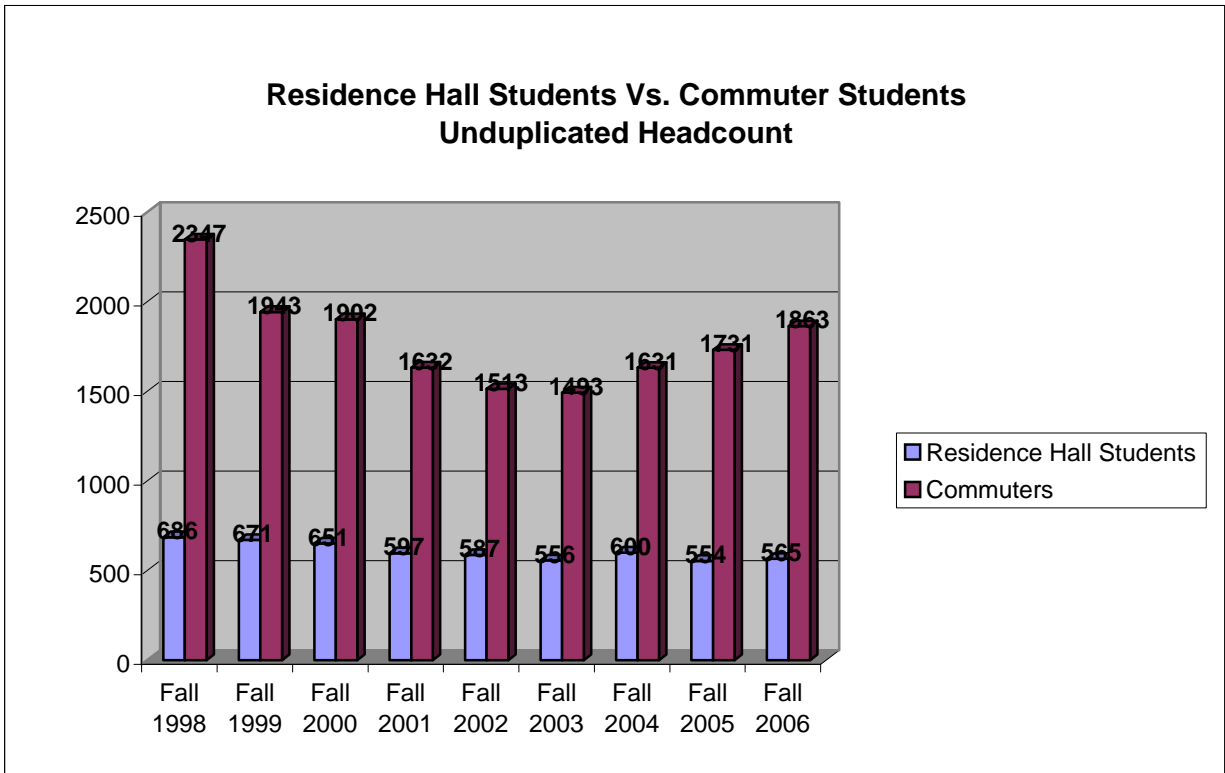
Fall 2006 Residence Hall Enrollment by Ethnicity and Gender

Residence Hall	White	African American	Other	Total
Callaway	76	15	3	94
Columbus	28	12	6	46
Goen	0	0	0	0
Grossnickle	32	4	1	37
Hastings-Simmons	33	14	2	49
Jones	83	69	12	164
Kincannon	92	76	7	175
Total	344	190	31	565

Men	Women	Total
0	94	94
46	0	46
0	0	0
3	34	37
0	49	49
0	164	164
10	165	175
59	506	565

Table 22A
Resident Hall Students Vs. Commuter Students
Unduplicated Headcount

	Residence Hall Students		Commuter Students		Total	
	#	%	#	%	#	%
Fall 1998	686	22.62%	2347	77.38%	3033	100%
Fall 1999	671	25.67%	1943	74.33%	2614	100%
Fall 2000	651	25.50%	1902	74.50%	2553	100%
Fall 2001	597	26.78%	1632	73.22%	2229	100%
Fall 2002	587	27.95%	1513	72.05%	2100	100%
Fall 2003	556	27.14%	1493	72.86%	2049	100%
Fall 2004	600	26.89%	1631	73.11%	2231	100%
Fall 2005	554	24.25%	1731	75.75%	2285	100%
Fall 2006	565	23.27%	1863	76.73%	2428	100%



**Table 23: Degrees Granted by Major, Ethnicity, and Gender
Academic Year 2005-2006**

			White		Black		Native American		Asian		Hispanic		Non-resident Alien		Grand Total
Major	CIP	Men	Women	Men	Women	Men	Women	Men	Women	Men	Women	Men	Women		
Arts & Sciences	Art Teacher Education	131302	0	2	0	0	0	0	0	0	0	0	0	0	2
	Biology, General	260101	1	3	0	4	0	0	0	0	0	0	0	0	8
	Chemistry, General	400501	0	0	0	0	0	0	0	0	0	0	0	1	1
	Communication, General	090101	1	9	1	2	0	0	0	0	0	0	0	0	13
	English Language & Literature, General	230101	3	8	0	2	0	0	0	0	0	0	0	0	13
	History, General	540101	0	5	0	0	0	1	0	0	0	0	0	0	6
	Microbiology/Bacteriology	260503	0	4	0	1	0	0	0	0	0	0	0	0	5
	Music Teacher Education	131312	0	2	0	0	0	0	0	0	0	0	0	0	2
	Music Therapy	512305	0	2	0	0	0	0	0	0	0	0	0	0	2
	Music, General	500901	1	2	0	0	0	0	0	0	0	0	0	0	3
	Paralegal/Legal Assistant	220302	0	7	1	8	0	0	0	0	0	0	0	0	16
	Political Science, General	451001	0	5	0	1	0	0	0	0	0	0	0	1	7
	Social Sciences, General	450101	2	9	0	2	0	0	0	0	0	0	0	0	13
Visual & Performing Arts	500101	5	16	0	1	0	0	0	0	0	0	0	0	22	
Business	Accounting	520301	1	13	0	3	0	0	1	0	0	0	1	1	20
	Business Administration & Mgt., General	520201	4	10	2	8	0	0	0	0	0	0	1	0	25
Culinary Arts	Culinary Arts	120599	2	6	0	0	0	0	0	0	0	0	0	0	8
Education & Human Sciences	Curriculum & Instruction - Master's	130301	1	1	0	1	0	0	0	0	0	0	0	0	3
	Educ. Of the Gifted & Talented - Master's	131004	0	3	0	0	0	0	0	0	0	0	0	0	3
	Elementary Teacher Education	131202	3	29	1	13	0	0	0	0	0	0	0	0	46
	Family Life & Relations Studies	190704	0	8	0	13	0	0	0	0	0	0	0	0	21
	Health & Physical Education, General	310501	2	5	0	2	0	0	0	0	0	0	0	0	9
	Health Teacher Education - Master's	131307	1	7	1	1	0	0	0	0	0	0	0	0	10
	Psychology, General	420101	3	11	0	12	0	1	0	0	0	0	0	0	27
	Reading Literacy Education - Master's	131315	0	7	0	7	0	0	0	0	0	0	0	0	14
Secondary Teacher Education - Master's	131205	0	1	0	1	0	0	0	0	0	0	0	0	2	
Nursing & Speech Language Pathology	Nursing (RN Training) - ASN	511601	4	27	0	14	0	0	0	0	0	0	0	0	45
	Nursing (RN Training) - BSN	511601	3	57	1	14	0	0	0	0	0	0	0	0	75
	Nursing (RN Training) - MSN	511601	3	23	0	9	0	0	0	0	0	0	0	0	35
	Speech-Language Pathology - Bachelor's	510203	0	9	0	1	0	0	0	0	0	0	0	1	11
	Speech-Language Pathology - Master's	510203	0	13	0	1	0	0	0	0	0	0	0	0	14
Grand Total			40	304	7	121	0	2	1	0	0	0	2	4	481

Table 24: History of Degrees Granted by Major & Gender

			2002		2003		2004		2005		2006		
	Major	CIP	Women	Men	Women	Men	Women	Men	Women	Men	Women	Men	
Arts & Sciences	Art Teacher Education	131302	3	0	0	0	2	2	4	1	2	0	
	Biology, General	260101	10	2	11	0	8	0	4	0	7	1	
	Chemistry, General	400501	4	2	1	0	0	1	2	1	1	0	
	Clothing/Apparel & Textile Studies	190901	0	0	1	0	0	0	0	0	0	0	
	Communication, General	090101	13	2	10	2	13	2	15	3	11	2	
	Elementary Teacher Education	131202	0	0	1	0	0	0	0	0	0	0	
	English Language & Literature, General	230101	17	1	14	1	21	2	10	1	10	3	
	History, General	450801	6	0	1	0	0	0	0	0	0	0	0
		540101	0	0	0	0	1	1	0	5	6	0	0
	Mathematics	270101	4	0	1	0	5	1	3	1	0	0	
	Microbiology/Bacteriology	260501	7	1	5	1	0	0	0	0	0	0	0
		260503	0	0	0	0	2	1	3	2	5	0	0
	Music Teacher Education	131312	0	0	0	0	2	1	1	0	2	0	
	Music Therapy	512305	0	0	0	0	0	0	1	0	2	0	
	Music, General	500901	0	0	0	0	2	3	1	5	2	1	
		220103	11	1	10	2	13	0	9	2	0	0	
	Paralegal/Legal Assistant	220302	0	0	0	0	0	0	0	0	15	1	
		400101	0	0	0	0	2	0	1	0	0	0	
	Physical Science, General	451001	0	0	2	0	1	1	1	1	7	0	
	Political Science, General	450101	10	2	8	2	3	3	8	0	11	2	
Social Sciences, General	160905	3	1	1	0	1	0	2	0	0	0		
Spanish Language & Literature	500101	14	6	18	3	11	6	11	1	17	5		
Visual & Performing Arts													
Arts & Sciences Total			102	18	84	11	87	24	76	23	98	15	
Business	Accounting	520301	17	2	11	1	13	5	10	2	17	3	
	Business Administration & Mgt., General	520201	23	14	28	14	19	5	30	8	18	7	
	Clothing/Apparel & Textile Studies	190901	1	0	0	0	0	0	0	0	0	0	
Business Total			41	16	39	15	32	10	40	10	35	10	
Culinary Arts	Culinary Arts	120599	8	5	15	1	7	2	9	2	6	2	
Culinary Arts Total			8	5	15	1	7	2	9	2	6	2	

Education & Human Sciences	Curriculum & Instruction - Master's	130301	7	1	9	0	5	0	8	0	2	1
	Educ. Of the Gifted & Talented - Master's	131004	17	0	6	0	8	0	2	1	3	0
	Elementary Teacher Education	131202	54	1	52	1	52	1	42	0	42	4
	Family Life & Relations Studies	190704	17	0	25	1	31	0	22	0	21	0
	Health & Physical Education, General	310501	16	1	12	4	7	1	5	4	7	2
	Health Teacher Education - Master's	131307	1	0	5	1	3	0	7	0	8	2
	Individual/Family Dev. Studies, General	190701	1	0	0	0	0	0	0	0	0	0
	Psychology, General	420101	19	2	22	1	18	2	18	0	24	3
	Reading Literacy Education - Master's	131315	0	0	0	0	4	1	3	0	14	0
	Secondary Teacher Education - Master's	131205	2	0	1	0	4	0	8	0	2	0
Education & Human Sciences Total			134	5	132	8	132	5	115	5	123	12
Nursing & Speech Language Pathology	Nursing (RN Training) - ASN	511601	16	0	39	1	51	2	34	4	41	4
	Nursing (RN Training) - BSN	511601	68	4	66	7	55	3	49	4	71	4
	Nursing (RN Training) - MSN	511601	24	2	22	1	24	2	26	1	32	3
	Speech-Language Pathology - Bachelor's	510203	8	0	8	1	13	0	11	0	11	0
	Speech-Language Pathology - Master's	510203	13	0	16	0	7	0	8	0	14	0
Nursing & Speech Language Pathology Total			129	6	151	10	150	7	128	9	169	11
Grand Total			414	50	421	45	408	48	368	49	431	50

Degrees Granted AY 1997-2006

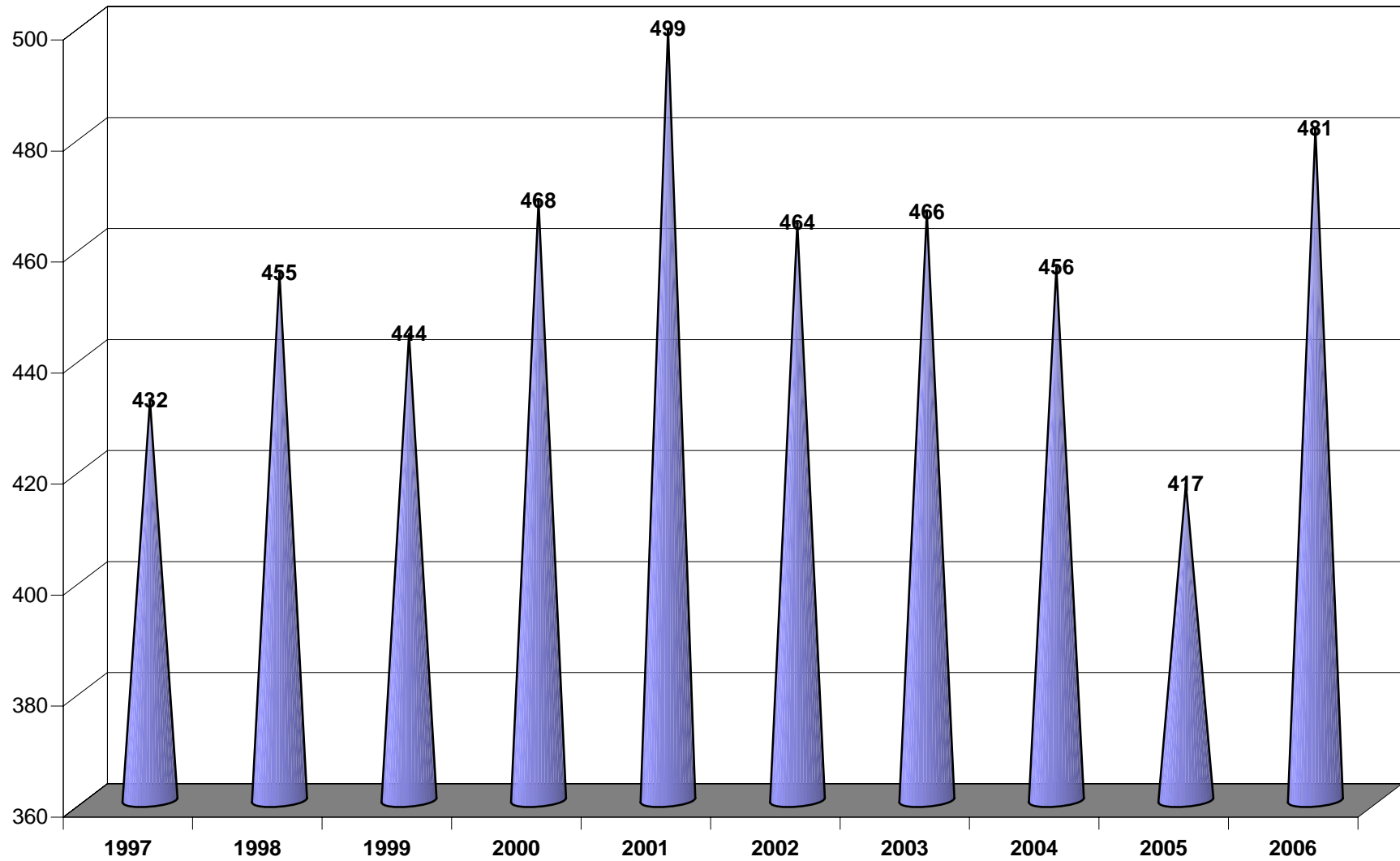
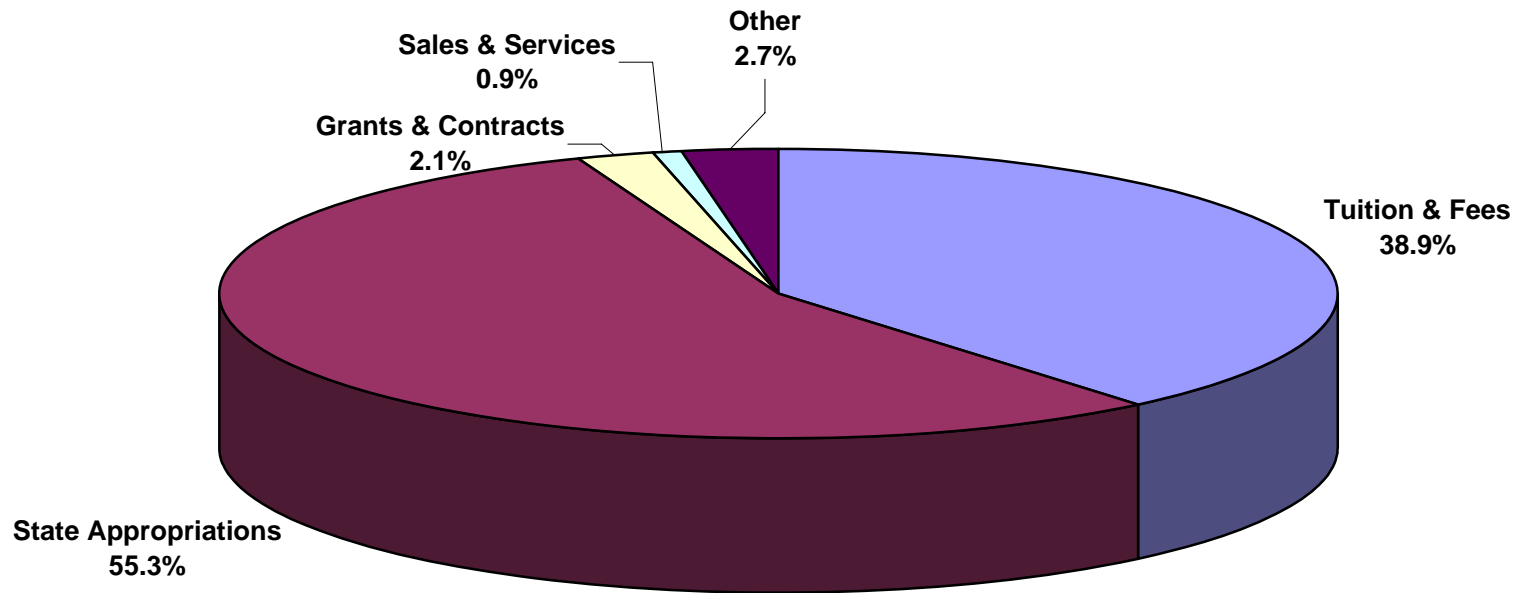


Table 25: Summary of Budgeted E&G Revenues and Expenditures

	2006-07		2005-06	
CURRENT FUND REVENUE				
Tuition and Fees	\$10,326,731	38.94%	\$9,489,431	38.18%
State Govt. Appropriations				
General Support	\$ 12,018,399	45.32%	\$ 9,909,884	39.87%
Interest Funds	\$ 9,389	0.04%	\$ 9,389	0.04%
MS Gov. School	\$ 157,500	0.59%	\$ 157,500	0.63%
Tupelo Nursing	\$ -	0.00%	\$ -	0.00%
Education Enhancement Fund	\$ 2,454,993	9.26%	\$ 1,985,239	7.99%
Education Enhancement Surplus	\$ -	0.00%	\$ -	0.00%
Contingency Funds	\$ 33,990	0.13%	\$ 1,177,159	4.74%
Sub-Total	\$ 14,674,271	55.34%	\$ 13,239,171	53.26%
Local Govt. Appropriations	\$ -	0.00%	\$ -	0.00%
Total Govt. Appropriations	\$ 14,674,271	55.34%	\$ 13,239,171	53.26%
Grants and Contracts				
Federal Grants and Contracts	\$ 50,000	0.19%	\$ 50,000	0.20%
State Grants and Contracts	\$ 230,944	0.87%	\$ 208,704	0.84%
Other	\$ 272,583	1.03%	\$ 272,583	1.10%
Sub-Total	\$ 553,527	2.09%	\$ 531,287	2.14%
Sales and Services	\$ 240,093	0.91%	\$ 240,093	0.97%
Other	\$ 722,691	2.73%	\$ 1,355,435	5.45%
TOTAL CURRENT REVENUE	\$ 26,517,313	100.00%	\$ 24,855,417	100.00%
CURRENT FUND EXPENDITURES				
Total Instructional Cost	\$ 10,629,412	40.08%	\$ 9,608,922	38.66%
Research	\$ 23,947	0.09%	\$ 23,947	0.10%
Public Service	\$ 197,866	0.75%	\$ 196,792	0.79%
Academic Support	\$ 2,489,468	9.39%	\$ 2,301,413	9.26%
Student Services	\$ 2,417,286	9.12%	\$ 2,230,793	8.98%
Institutional Support	\$ 3,919,711	14.78%	\$ 3,620,545	14.57%
Operations & Maintenance	\$ 4,347,741	16.40%	\$ 4,472,729	17.99%
Scholarships & Fellowships	\$ 2,491,882	9.40%	\$ 2,400,276	9.66%
Mandatory Transfers	\$ -	0.00%	\$ -	0.00%
Non-Mandatory Transfers	\$ -	0.00%	\$ -	0.00%
TOTAL CURRENT EXPENDITURES	\$ 26,517,313	100.00%	\$ 24,855,417	100.00%

SOURCE: MUW General Fund Budgets

2006-2007 MUW GENERAL FUND BUDGET PERCENT OF TOTAL E&G REVENUE BY BUDGET ENTITY



**2006-2007 MUW GENERAL FUND BUDGET
PERCENT OF TOTAL E&G EXPENDITURES BY BUDGET ENTITY**

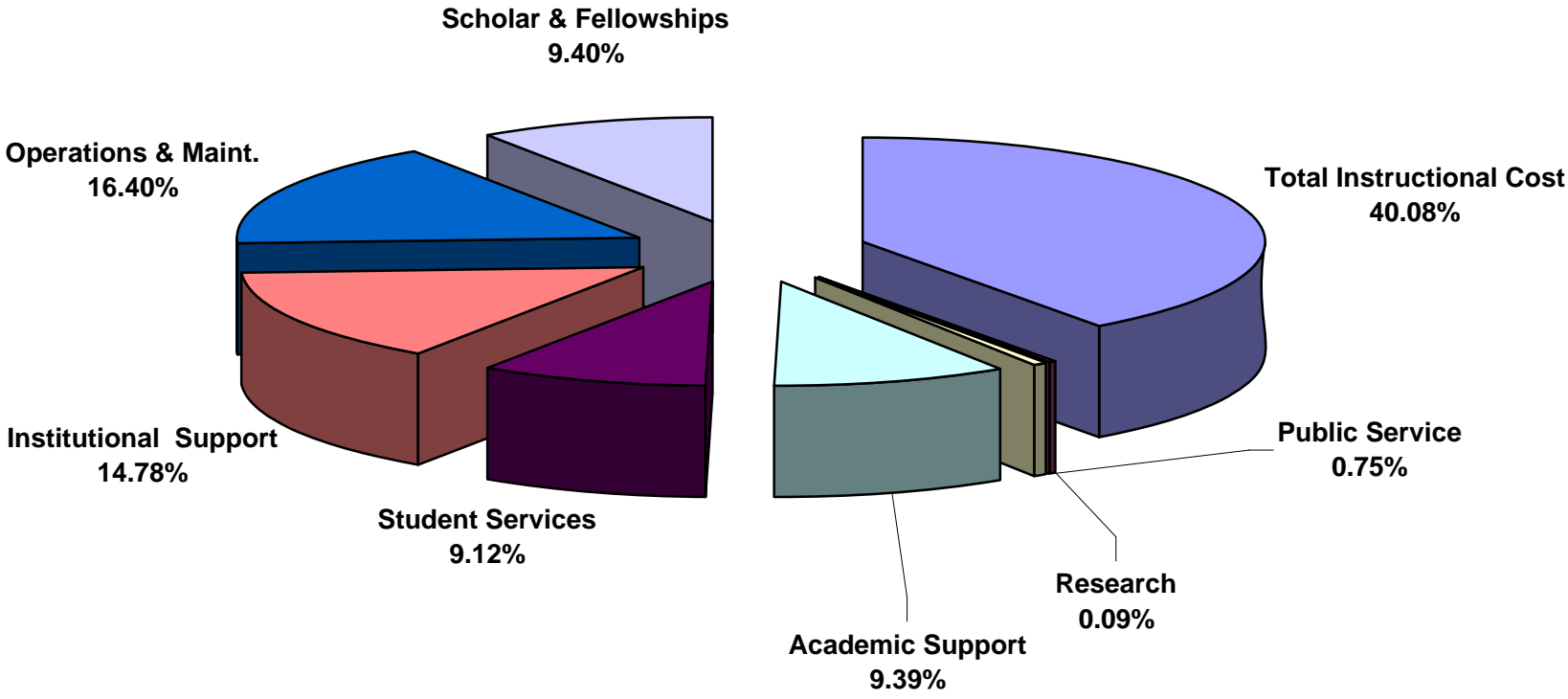


Table 26
Authorization of State General Obligation Bonds for MUW
FY 1990 - 2006

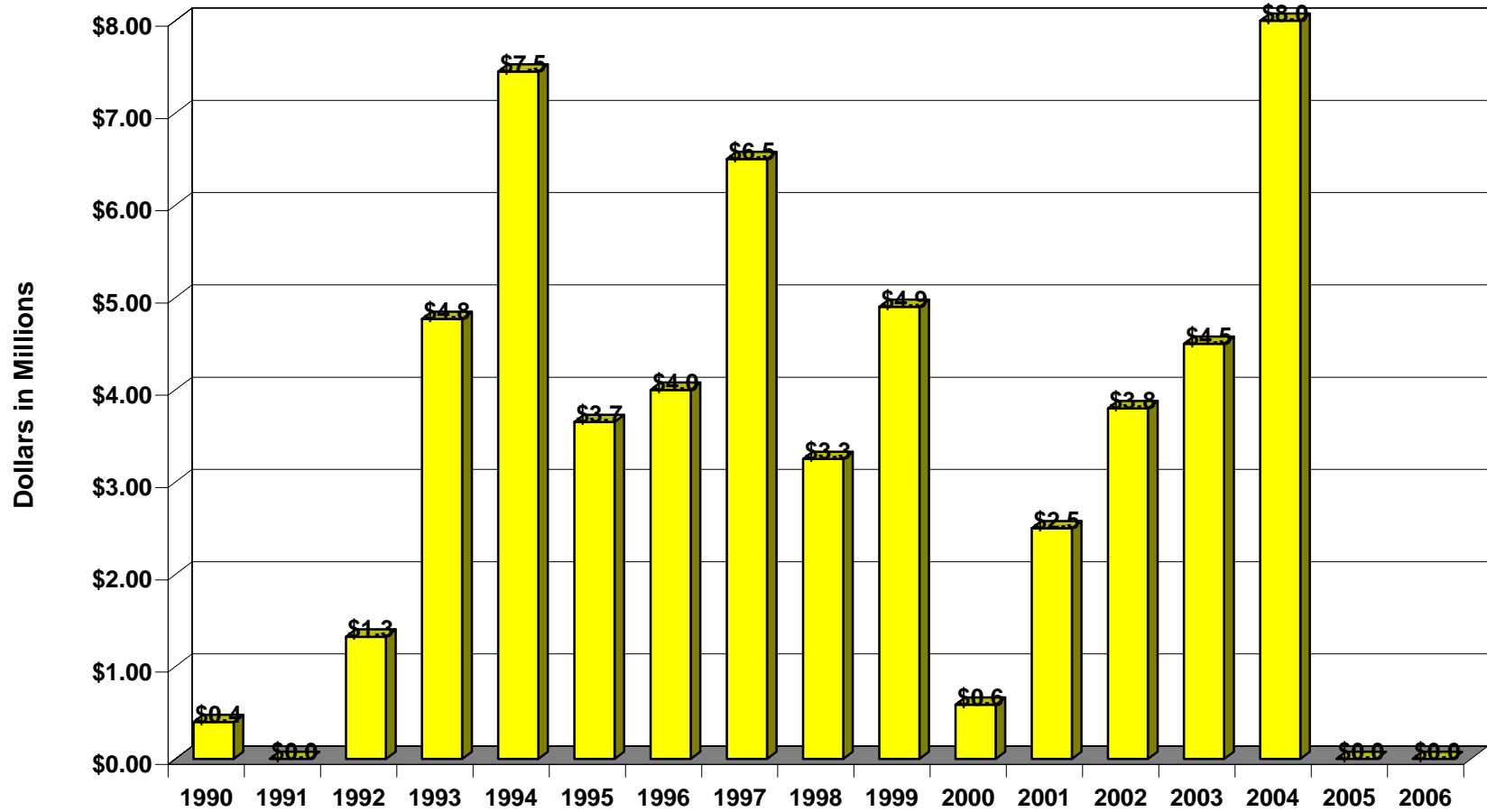


Chart does not include MS Emergency Mgt. Agency disaster recovery funds.
 Bonds approved in FY 2007 will be added in late spring 2007 or summer 2007.

Table 27
Authorization of State General Obligation Bonds for IHL FY 1990 - 2006

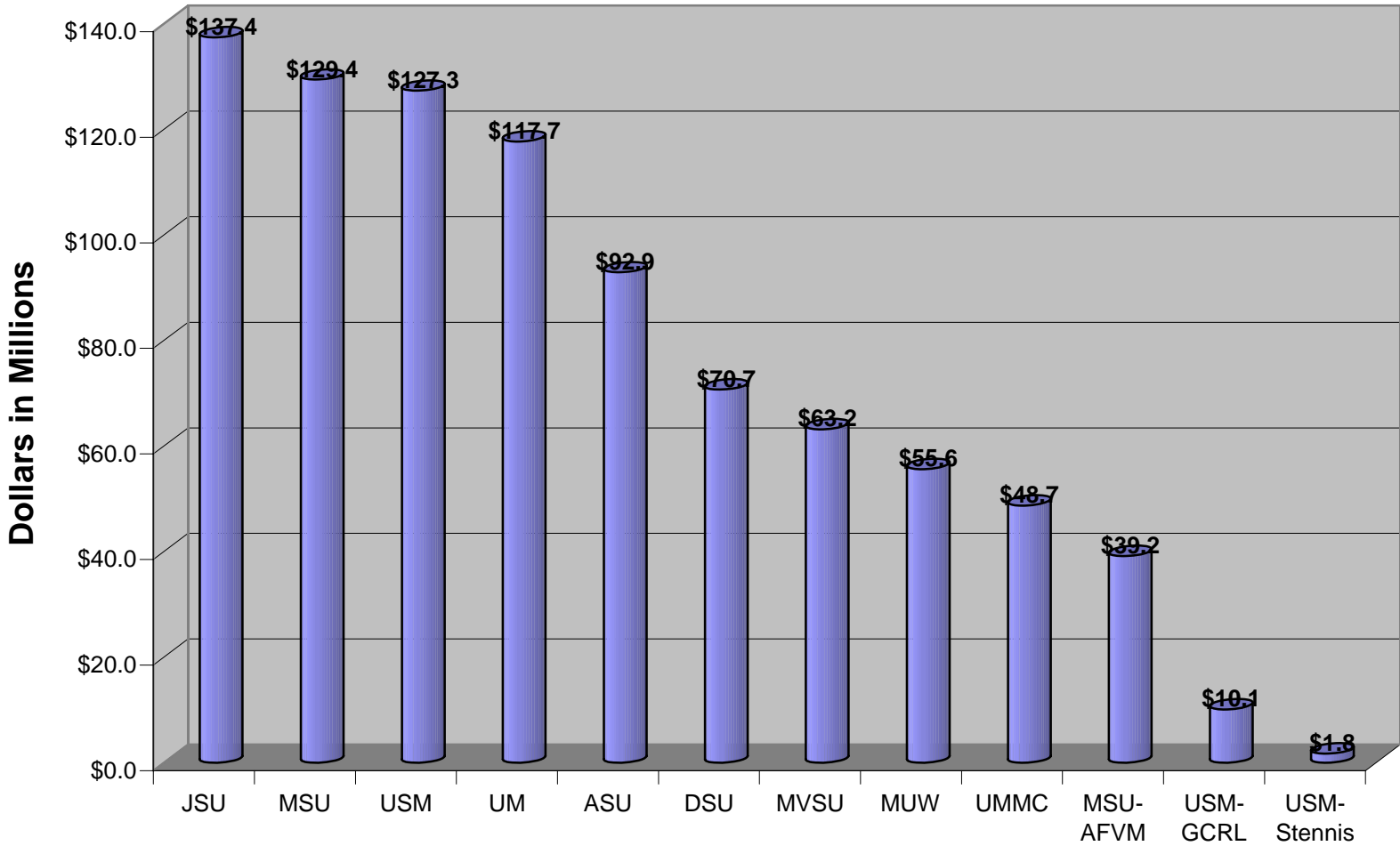


Chart does not include \$35.6 million Ayers bonds divided between ASU, JSU, and MVSU.
Chart does not include MUW's MS Emergency Mgt. Agency disaster recovery funds.
Bonds approved in FY 2007 will be added in late spring 2007 or summer 2007.

Explanation of Terms

Academic Year is the year that begins with the first summer session and continues through the next spring session; for example, Academic Year 2006-2007 refers to Summer 2006, Fall 2006, and Spring 2007.

ACT is the American College Test, which is divided into four main sections: Mathematics, English, Reading, and Science Reasoning.

CIP Codes are the Classification of Instructional Program Codes that were developed in 2000. These six-digit codes are used to answer questions concerning program enrollments and completions on three of the IPEDS Surveys: Institutional Characteristics, Completions, and Enrollment in Occupationally Specific Programs.

Cohort refers to a specific population, which is studied over a period of time, such as a group of students who enrolled for the first time in the Fall of 2006.

EMAS is the Enrollment Management Action System software that is used by the Admissions Office.

Fiscal Year is the year that begins on July 1 and ends on June 30; for example, Fiscal Year 2006-2007 (FY 07) extends from July 1, 2006 through June 30, 2007.

Full-time graduate student is one who is enrolled in 9 or more semester credit hours.

Full-time undergraduate student is one who is enrolled in 12 or more semester credit hours.

Graduate FTE (full-time equivalent) is calculated by dividing total graduate semester credit hours by 12.

Headcount as defined by IHL is the actual number of different individuals enrolled in credit courses. Headcount can be unduplicated or duplicated; a duplicated headcount duplicates students who take classes on more than one campus. According to IHL's duplicated headcount definition, an undergraduate student who takes nine hours on main campus and three hours at Tupelo is counted as two part-time undergraduate students. In duplicated headcount, a student's full-time/part-time status is determined by hours per campus not total hours taken.

IHL refers to the Board of Trustees of State Institutions of Higher Learning in Mississippi.

IPEDS is the Integrated Post-secondary Education Data System.

Non-traditional student, as defined by IHL, refers to an undergraduate student who is 25 years of age or over.

Part-time graduate student is one who is enrolled in less than 9 semester credit hours.

Part-time undergraduate student is one who is enrolled in less than 12 semester credit hours.

Ranked faculty are full-time faculty positions including instructors, assistant professors, associate professors, and professors.

SREB (Southern Regional Education Board) States include: Alabama, Arkansas, Delaware, Florida, Georgia, Kentucky, Louisiana, Mississippi, Maryland, North Carolina, Oklahoma, South Carolina, Tennessee, Texas, Virginia, and West Virginia.

**Student Level, as defined by IHL
Definitions Effective as of the Beginning of Summer 2001**

Freshmen – Students who have completed less than 30 semester hours.

Sophomores – Students who have completed at least 30 semester hours, but fewer than 60 semester hours.

Juniors – Students who have completed at least 60 semester hours, but fewer than 90 semester hours.

Seniors – Students who have completed at least 90 semester hours, but have not completed all the requirements for the undergraduate degree for which she/he is currently enrolled.

Fifth Year Level – Student is at advanced undergraduate upper level in five-year programs (e.g. architecture and engineering) or students with a bachelor's or higher degree who are taking additional undergraduate courses.

Master's – Student is in a program or degree that usually covers one year and approximately 30 semester hours above the baccalaureate.

Specialist – Student is in a program or degree that usually covers one year and approximately 30-36 semester hours above the baccalaureate.

Doctoral – Student is in a program or degree that usually covers two years and approximately 60 semester hours above the master's

Unclassified Post-baccalaureate – Student is not a candidate for a Baccalaureate degree or other formal award, although taking graduate classes with other students. Includes but is not limited to “special” and other students taking first-professional or graduate courses, but who are not working toward a degree.

First Professional – Student is in the first year of a Year/Level 1 program or degree leading to the first level of professional training, as recognized by others in the profession. Examples: J.D., M.D., D.V.M. etc.

Total Operating Budget includes restricted, designated, and auxiliary funding.

Type of current registration as defined by IHL:

First-time Freshman – (1) an entering freshman granted fewer hours than required for transfer status (less than 12 hours), including students enrolled in the fall term who attended college for the first time in the prior summer term and did not have the twelve hours required for transfer status or (2) a student who successfully completed the twelve hour Summer Development Program regardless of the institution attended or (3) a student who entered with advance standing (college credits earned before high school graduation)

Returning Student – An undergraduate student who has registered at this institution during the preceding regular term and would not be classed as a first-time freshman.

Readmitted Student – An undergraduate student who previously attended this institution but did not attend this institution during the previous regular term.

Transfer Student – An undergraduate student entering the reporting institution for the first time who was granted at least twelve hours toward a degree or certificate for work done at another post-secondary institution – exceptions include Summer Developmental Program participants and students with advance placement credit or some other form of advanced standing.

Returning Graduate Students – A student who is enrolled for credit for work creditable toward a graduate degree, i.e., master’s, specialist, or doctorate and was previously registered as a graduate student at this institution or another institution.

First-Professional Student – A student who is enrolled for work creditable toward a first professional degree (law, dentistry, medicine)

Transient Student – A student who is regularly enrolled and in good standing at an institution other than the reporting institution and is taking a course or courses at the reporting institution which he/she intends to transfer to his/her regular institution.

High School Student Taking College Courses – A student who is still in high school but has special permission to take a college level course.

Non-formula Students 21 and over - A student who is currently registered under provisions or original admission code of 6 on data element 4-112 which is for students who are at least age 21 and who do not meet admissions standards and who do not fall into the first five Original Admission Code categories.

First-time graduate student – A new graduate student. One who has not been registered previously as a graduate student.

Other – A student who is not classified in one of the preceding categories.

Summer Developmental Program Participant – A student who does not meet one of the four criteria to gain admission defined by Original Admission Code (Element 4-112, Codes “E” through “H”) Valid in summer term only

Unduplicated headcount figures count each individual student once regardless of the number of branch campus affiliations (Tupelo, Columbus Air Force Base).

Undergraduate FTE (full-time equivalent) is calculated by dividing total undergraduate semester credit hours by 15.

Unranked faculty are full-time faculty positions filled by lecturers who do not have tenure and cannot seek rank.

University Abbreviations:

ASU – Alcorn State University

DSU – Delta State University

JSU – Jackson State University

MSU –Mississippi State University

MUW – Mississippi University for Women

MVSU – Mississippi Valley State University

UM – University of Mississippi

UMMC – University of Mississippi Medical Center

USM – University of Southern Mississippi

MSU-AFVM – Mississippi State University’s Division of Agriculture, Forestry, and
Veterinary Medicine

USM-GCRL – University of Southern Mississippi’s Gulf Coast Research Laboratory

USM-Stennis – University of Southern Mississippi’s Stennis Space Center