

# **Mississippi University for Women Fact Book 2007-2008**



## **Office of Institutional Research**

**Reneau Hall - 1<sup>st</sup> Floor  
1100 College St., W-160  
Columbus, MS 39701  
662-329-8543**

# MISSISSIPPI UNIVERSITY FOR WOMEN

## FACT BOOK 2007 - 2008

### Table of Contents

<b>Organizational Chart.....</b>	<b>1</b>
<b>MUW Vision, Mission, &amp; Guiding Principles .....</b>	<b>2</b>
<b>MUW Goals .....</b>	<b>4</b>
<b>MUW Profile .....</b>	<b>5</b>

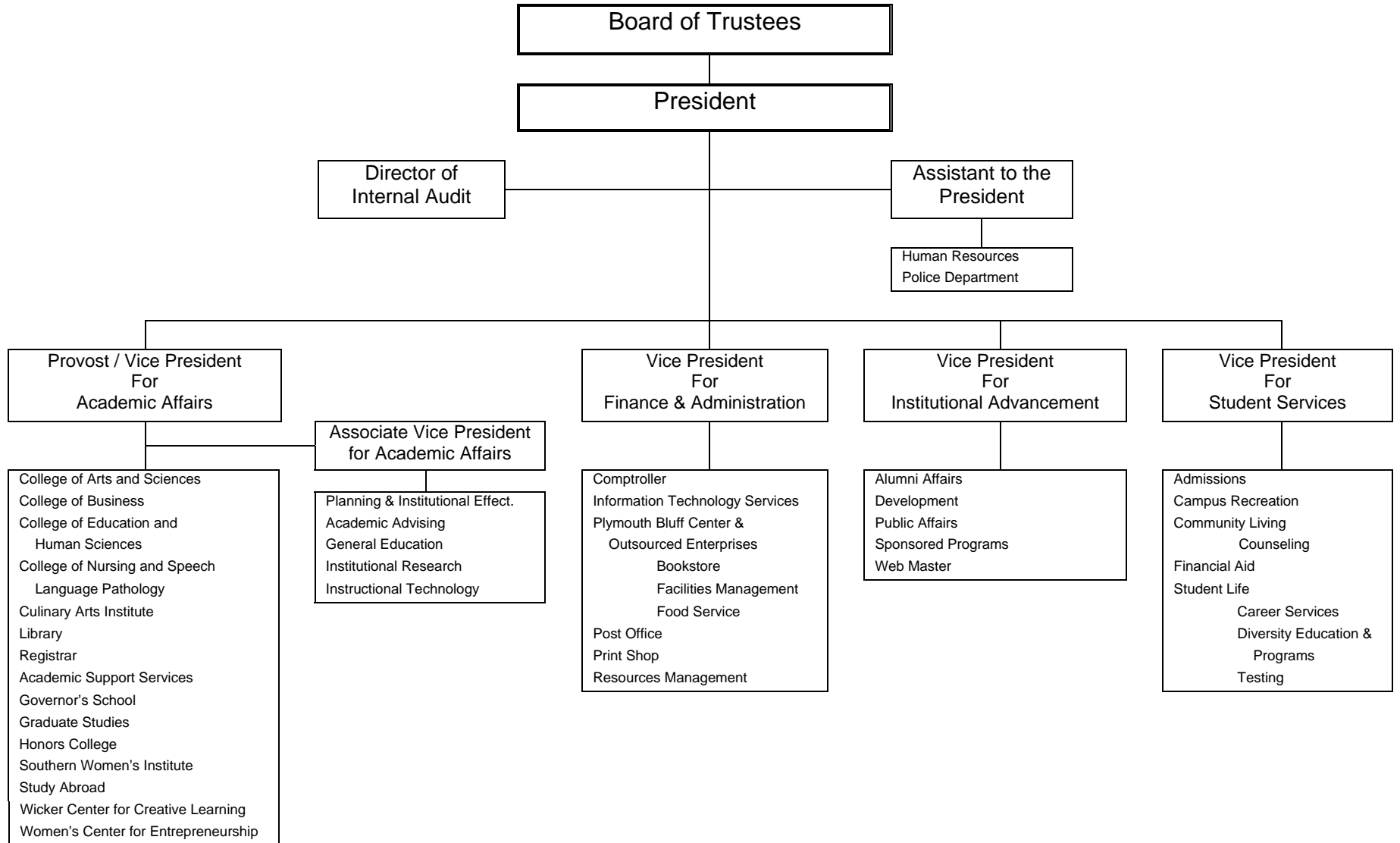
<b><u>Table</u></b>	<b><u>Description</u></b>	
A:1.	First-time Freshmen .....	7
A:2.	First-time, Full-time Bachelor’s Degree Seeking Freshman Headcount -Graph .....	8
A:3.	First-time Transfers .....	9
A:4.	First-time, Full-time Bachelor’s Degree Seeking Freshman Cohort Retention & Graduation Rates.....	10
A:5.	First-time, Full-time Bachelor’s Degree Seeking Transfer Cohort Retention & Graduation Rates.....	11
A:6.	First-time, Full-time Bachelor’s Degree Seeking Honors Freshman Cohort Retention & Graduation Rates .....	12
A:7.	First-time, Full-time Bachelor’s Degree Seeking Freshman ACT Scores .....	13
B:1.	Duplicated Headcount and FTE Enrollment - Fall Terms .....	14
B:1a.	Duplicated Headcount and FTE Enrollment - Fall Terms - Graph.....	15
B:2.	Unduplicated Headcount and FTE Enrollment - Fall Terms .....	16
B:2a.	Unduplicated Headcount and FTE Enrollment - Fall Terms - Graph.....	17
B:3.	Unduplicated Enrollment By Gender - Fall 1998 to Fall 2007.....	18
B:3a.	Unduplicated Enrollment By Gender - Fall 1998 to Fall 2007 - Graph .....	19
B:4.	Unduplicated Enrollment By Ethnicity - Fall 1998 to Fall 2007.....	20
B:4a.	Unduplicated Enrollment By Ethnicity - Fall 1998 to Fall 2007 - Graph.....	21
B:5.	Unduplicated Enrollment and Credit Hour Production by FT/PT Status .....	22
B:5a.	FT/PT Unduplicated Headcount - Fall Terms - Graph .....	23

B:6.	Unduplicated Enrollment by Ethnicity, Gender, FT/PT Status - Fall 2007 .....	24
B:6a.	Undergraduate, Unduplicated Enrollment by Ethnicity, Gender, FT/PT Status .....	25
B:6b.	Graduate Unduplicated Enrollment by Ethnicity, Gender, FT/PT Status .....	26
B:7.	Unduplicated Enrollment By Student Classification - Fall Terms.....	27
B:7a.	Unduplicated Enrollment By Student Classification - Fall Terms - Graph .....	28
B:8.	Unduplicated Headcount Enrollment by Credit Hours and Student Classification ....	29
B:9.	Age Distribution by Student Classification: Unduplicated Headcount .....	30
B:10.	Non-traditional Vs. Traditional Students - Unduplicated Headcount - Fall Terms ....	31
B:10a.	Non-traditional Vs. Traditional Students - Graph.....	32
B:11.	Residence Hall Student Headcount .....	33
B:12.	Residence Hall Students Vs. Commuter Students - Unduplicated Headcount .....	34
B:13.	Unduplicated Enrollment by State of Residence: Fall 2003 - 2007.....	35
B:14.	Unduplicated Enrollment by State of Residence & Student Classification – Fall 2007 .....	36
B:15.	Unduplicated Headcount Enrollment by Country: Fall 2003-2007 .....	37
B:16.	Unduplicated Enrollment by MS County: Fall 2003-2007.....	38
C:1.	Enrollment by Major and Program Type – Unduplicated Headcount .....	41
C:2.	Unduplicated Headcount Enrollment by College: Fall 2005 - Fall 2007 .....	44
C:3.	Class Type Enrollment.....	45
C:4.	Credit Hour Generation by College & Department .....	46
C:4a.	Credit Hour Generation by College – Fall 2007 - Chart.....	48
C:5.	University Grade Distribution by College & Dept. - Fall 2007 .....	49
C:6.	Undergraduate Grade Distribution by College & Dept. - Fall 2007 .....	51
C:7.	Graduate Grade Distribution by College & Dept. - Fall 2007 .....	53
C:8.	Degrees Granted by Major, Ethnicity, and Gender - Academic Year 2007 .....	54
C:8a.	Degrees Awarded Academic Year 2007 - Chart.....	56
C:9.	History of Degrees Granted by Major and Gender .....	57
C:9a.	Degrees Granted AY 1998-2007 - Graph .....	59
C:9b.	Top Bachelor and Master Degrees Awarded in Last Five Years - Chart.....	60
D:1.	Faculty Profile.....	61

D:1a.	Full-time Faculty Profile - Fall 2007 - Chart .....	62
D:2.	Faculty Credit Hour Production by Course Level .....	63
E:1.	Summary of Budgeted E&G Revenues and Expenditures .....	64
E:1a.	2007-2008 E&G Revenues by Budget Entity - Chart.....	65
E:1b.	2007-2008 E&G Expenditures by Budget Entity - Chart .....	66
E:2.	Authorization of State General Obligation Bonds for MUW FY 1990-2007..	67
E:3.	Authorization of State General Obligation Bonds for IHL FY 1990-2007 .....	68
<b>APPENDIX: Explanation of Terms .....</b>		<b>69</b>

# Mississippi University for Women Organizational Chart

*Effective 12/14/07*



# Mississippi University for Women Fact Sheet

## **Vision, Mission and Guiding Principles**

### **Vision**

Building on its long tradition of excellence in liberal arts and professional education, as well as its historic focus on academic and leadership development for women, Mississippi University for Women will continue to be a university that prepares both women and men for successful lives by providing a high-quality education in a personalized learning environment.

### **Mission**

A Carnegie Master's II public institution, Mississippi University for Women provides high-quality undergraduate and graduate education for women and men in a variety of liberal arts and professional programs, while maintaining its historic commitment to academic and leadership development for women. MUW provides education in Business and Communication, Education and Human Sciences, Fine and Performing Arts, Health and Kinesiology, Humanities, Culinary Arts, Nursing, Science and Mathematics, utilizing small classes and emphasizing a personalized learning environment. The graduates of MUW are prepared for competitive careers and excellent graduate and professional schools. MUW provides educational opportunities throughout Mississippi and the United States while addressing the unique educational and public service needs of northeast Mississippi and adjoining counties in northwest Alabama.

### **Guiding Principles**

MUW provides high-quality instructional programs that emphasize teaching and learning. With faculty and staff of the highest caliber, MUW is dedicated to providing a campus environment for students that encourages lifelong learning, strong career preparation, and personal growth. Graduates are expected to have skills in communication, technology, and critical thinking, as well as an awareness of self, gender-related issues, cultural diversity, and responsible citizenship.

MUW is student oriented. MUW provides small classes and emphasizes personalized student attention, so that each student will have the opportunity to succeed. MUW offers a student-life program that stimulates learning and leadership development.

MUW values research, scholarship, and creativity. While MUW is primarily a teaching institution, the university supports research, scholarship, and creativity to enhance the professional development of faculty and staff in order to better prepare students.

MUW is committed to diversity among its faculty, staff, and students. The faculty, staff,

and students of MUW represent the global society in which we live. MUW believes that diversity allows students to grow in their understanding of self and others.

MUW endorses sound organizational principles. MUW is committed to operational efficiency, collaborative strategic planning, institutional effectiveness, and creative problem solving.

MUW meets regional, state, and national needs for higher education. MUW responds to the needs of the local community by providing cultural activities; programs for intellectual, professional, and social development; and by assisting in economic development. MUW extends its outreach to the state and nation using multiple delivery methods, including the internet and other advanced systems.

MUW is committed to public service. MUW forms partnerships with businesses, as well as with educational, governmental, public service, and charitable organizations, to create opportunities that provide economic and social advantages for the institution, community, and region.

**Approved by the Mississippi IHL Board on January 15, 2004**

**“W-2009”**

**A Strategic Plan for MUW**

**Goals**

MUW Goal 1: Provide high quality, student-centered instructional programs in a personalized learning environment.

MUW Goal 2: Ensure high quality academic and leadership preparation for women.

MUW Goal 3: Provide student life programs that stimulate intellectual, social, emotional, physical, and leadership development.

MUW Goal 4: Increase enrollment through effective recruitment and retention strategies.

MUW Goal 5: Promote effective organizational principles.

MUW Goal 6: Provide programs and services that enhance the cultural, intellectual, social, and professional development of the citizens of our region, state, and nation.

MUW Goal 7: Promote diversity among MUW students, faculty, and staff.

MUW Goal 8: Encourage research, scholarship, and creative endeavors to enhance instruction and professional development.

MUW Goal 9: Provide physical resources, infrastructure, and technology to advance the educational, operational, and public service goals of the University.

MUW Goal 10: Build partnerships and public awareness to support the University’s mission and to promote institutional and economic development.

---

---

**Approved by the President on March 8, 2004**



## **MUW Profile**

**Mississippi University for Women has been ranked a top Southern public master's university by U.S.News & World Report for the fourth year in a row.**

**MUW was also ranked 10th among Southern public master's universities in the 2008 edition of "America's Best Colleges". MUW also appeared in the best value category as the No. 2 Southern public master's university and No. 30 in the Best Universities Master's by region.**

**2,379 unduplicated students are enrolled at MUW for the Fall 2007 semester.**

73 % are full-time students

84.5 % are female

15.5 % are male

64 % are white

33 % are African-American

13 % are degree seeking new transfer students

9 % are first-time, full-time bachelor's degree seeking freshman students

25.17 is the average age of a MUW student

23.42 is the average age of a male student

25.49 is the average age of a female student

67 % of MUW students are 24 years old or younger

33 % of MUW students are 25 or older

**Student to Faculty FTE Ratio: The Student to Faculty FTE ratio is approximately 13.1 to 1.**

## **MUW Employees**

MUW has approximately 298 full-time employees.

Approximately 71 % of full-time employees are female.

Approximately 29 % of full-time employees are men.

Approximately 17 % of full-time employees are minorities.

MUW has approximately 81 part-time employees

**MUW is an affirmative action/equal opportunity institution.**

## **Student Fees Academic Year 2007-2008**

### **Under graduate**

Semester Hour	\$164.00 (In-state)
Semester Hour	\$405.20 (Out-of-state)

### **Graduate**

Semester Hour	\$218.50 (In-state)
Semester Hour	\$540.25 (Out-of-state)

### **Grounds and Buildings**

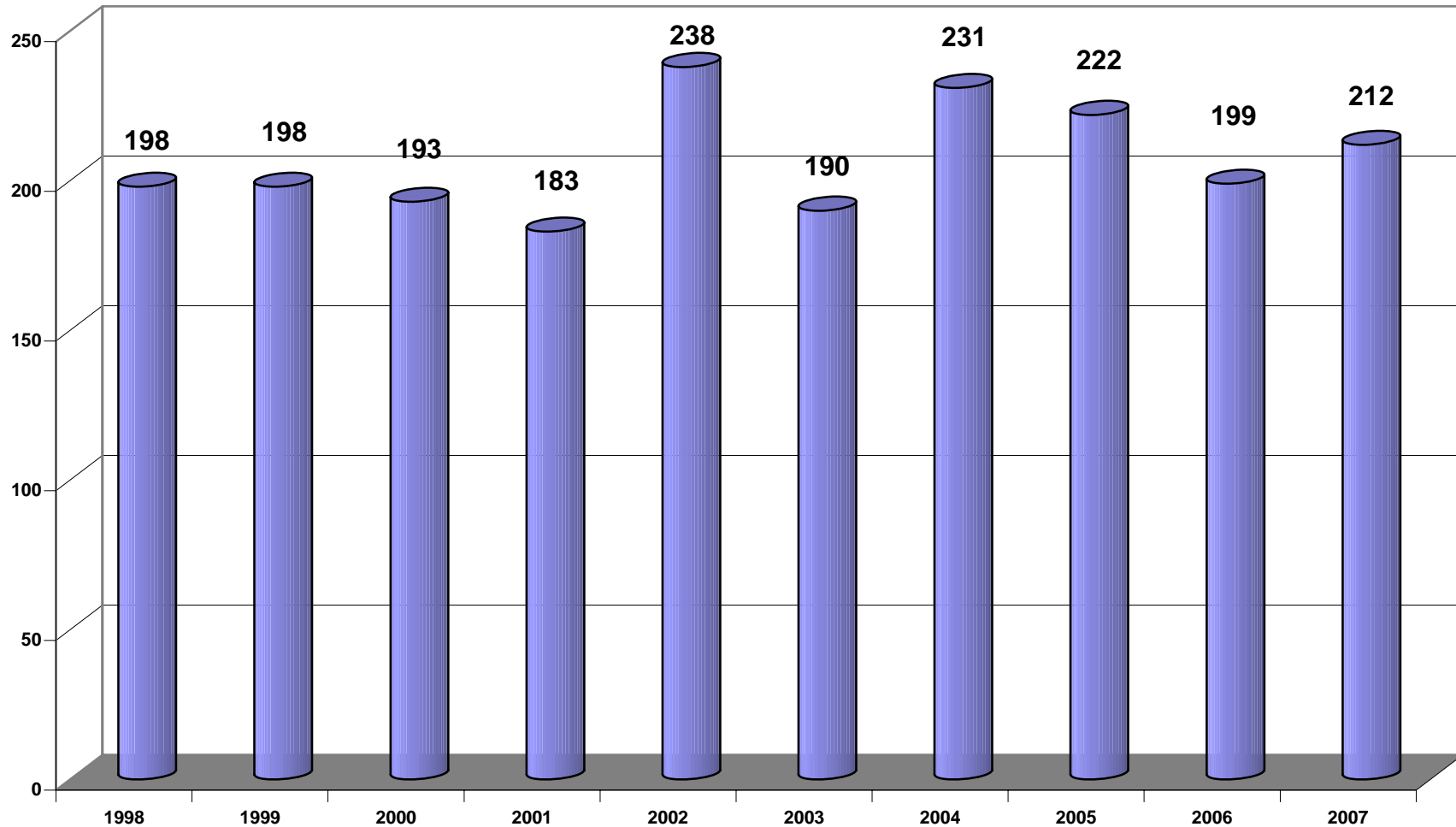
The campus covers more than 114 acres within the historic district of central Columbus, MS. Twenty-three of more than 60 buildings are listed on the National Register of Historic Places.

**Table A:1 First-time Freshmen**

	<b>Fall 2006</b>	<b>Fall 2007</b>
<b>Applicants</b>	1381	1356
<b>Accepted</b>	683	627
<b>Enrolled</b>	267	241
<b>Of those Enrolled</b>		
<b>First-time Full-time Bachelor's Degree Seeking</b>	199	212
<b>First-time Part-time Bachelor's Degree Seeking</b>	3	4
<b>First-time Full-time Other Degree Seeking</b>	58	23
<b>First-time Part-time Other Degree Seeking</b>	3	2
<b>Total Degree Seeking Freshmen</b>	263	241

*\*For Fall 2006, our Pre-BSN, Pre-OT, and Pre-Engineering Students will be included in the Other Degree Seeking Cohort instead of the Bachelor's Degree Seeking Cohort. The Other Degree Seeking Cohorts already included ASN and Pre-ASN students.*

**Table A:2 First-time, Full-time Bachelor's Degree Seeking Freshman Headcount  
Fall 1998 - 2007**



\*In Fall 2006, our Pre-BSN, Pre-OT, and Pre-Engineering Students are included in the Other Degree Seeking Cohort instead of the Bachelor's Degree Seeking Cohort. The Other Degree Seeking Cohorts includes ASN and Pre-ASN students for all of the fall semesters (1998-2007) included in the graph.

**Table A:3 First-time Transfers**

	<b>2006</b>	<b>2007</b>
<b>Applicants</b>	1061	1025
<b>Accepted</b>	584	537
<b>Enrolled</b>	323	313
<b>Of those Enrolled</b>		
<b>Full-time Degree Seeking</b>	273	266
<b>Part-time Degree Seeking</b>	32	42
<b>Total Degree Seeking</b>	305	308

**Table A:4**  
**First-time Full-time Bachelor's Degree Seeking Freshman Cohort Retention & Graduation Rates**

	Fall 2001		Fall 2002		Fall 2003		Fall 2004		Fall 2005		Fall 2006		Fall 2007	
<b>Fall 2001 Cohort</b>														
<b>Enrolled</b>	183		117	63.93%	93	50.82%	83	45.36%	36	19.67%	13	7.10%	10	5.46%
<b>Graduated</b>	0		0	0.00%	0	0.00%	1	0.55%	44	24.04%	63	34.43%	66	36.07%
<b>Total</b>	183		117	63.93%	93	50.82%	84	45.90%	80	43.72%	76	41.53%	76	41.53%

	Fall 2002		Fall 2003		Fall 2004		Fall 2005		Fall 2006		Fall 2007	
<b>Fall 2002 Cohort</b>												
<b>Enrolled</b>	238		160	67.23%	144	60.50%	127	53.36%	65	27.31%	31	13.03%
<b>Graduated</b>	0		0	0.00%	0	0.00%	1	0.42%	61	25.63%	95	39.92%
<b>Total</b>	238		160	67.23%	144	60.50%	128	53.78%	126	52.94%	126	52.94%

	Fall 2003		Fall 2004		Fall 2005		Fall 2006		Fall 2007		Fall 2008	
<b>Fall 2003 Cohort</b>												
<b>Enrolled</b>	190		128	67.37%	111	58.42%	92	48.42%	36	18.95%		
<b>Graduated</b>	0		0	0.00%	0	0.00%	0	0.00%	49	25.79%		
<b>Total</b>	190		128	67.37%	111	58.42%	92	48.42%	85	44.74%		

	Fall 2004		Fall 2005		Fall 2006		Fall 2007		Fall 2008		Fall 2009	
<b>Fall 2004 Cohort</b>												
<b>Enrolled</b>	231		160	69.26%	120	51.95%	98	42.42%				
<b>Graduated</b>	0		0	0.00%	0	0.00%	1	0.43%				
<b>Total</b>	231		160	69.26%	120	51.95%	99	42.86%				

	Fall 2005		Fall 2006		Fall 2007		Fall 2008		Fall 2009		Fall 2010	
<b>Fall 2005 Cohort</b>												
<b>Enrolled</b>	222		155	69.82%	128	57.66%						
<b>Graduated</b>	0		0	0.00%	0	0.00%						
<b>Total</b>	222		155	69.82%	128	57.66%						

	Fall 2006		Fall 2007		Fall 2008		Fall 2009		Fall 2010		Fall 2011	
<b>Fall 2006 Cohort</b>												
<b>Enrolled</b>	199		132	66.33%								
<b>Graduated</b>	0		0	0.00%								
<b>Total</b>	199		132	66.33%								

\*Students receiving more than one degree are only counted once.

\*\*If a student receives an ASN degree, it is not reflected in this table.

**Table A:5**  
**First-time Full-time Bachelor's Degree Seeking Transfer Cohort Retention & Graduation Rates**

	Fall 2001		Fall 2002		Fall 2003		Fall 2004		Fall 2005		Fall 2006		Fall 2007	
<b>Fall 2001 Cohort</b>														
<b>Enrolled</b>	165		120	72.73%	72	43.64%	29	17.58%	14	8.48%	10	6.06%	6	3.64%
<b>Graduated</b>			1	0.61%	39	23.64%	77	46.67%	86	52.12%	90	54.55%	93	56.36%
<b>Total</b>	165		121	73.33%	111	67.27%	106	64.24%	100	60.61%	100	60.61%	99	60.00%

	Fall 2002		Fall 2003		Fall 2004		Fall 2005		Fall 2006		Fall 2007	
<b>Fall 2002 Cohort</b>												
<b>Enrolled</b>	182		135	74.18%	90	49.45%	48	26.37%	18	9.89%	6	3.30%
<b>Graduated</b>			0	0.00%	39	21.43%	81	44.51%	98	53.85%	110	60.44%
<b>Total</b>	182		135	74.18%	129	70.88%	129	70.88%	116	63.74%	116	63.74%

	Fall 2003		Fall 2004		Fall 2005		Fall 2006		Fall 2007		Fall 2008	
<b>Fall 2003 Cohort</b>												
<b>Enrolled</b>	190		135	71.05%	77	40.53%	38	20.00%	19	10.00%		
<b>Graduated</b>			1	0.53%	45	23.68%	88	46.32%	101	53.16%		
<b>Total</b>	190		136	71.58%	122	64.21%	126	66.32%	120	63.16%		

	Fall 2004		Fall 2005		Fall 2006		Fall 2007		Fall 2008		Fall 2009	
<b>Fall 2004 Cohort</b>												
<b>Enrolled</b>	241		158	65.56%	97	40.25%	46	19.09%				
<b>Graduated</b>			7	2.90%	55	22.82%	99	41.08%				
<b>Total</b>	241		165	68.46%	152	63.07%	145	60.17%				

	Fall 2005		Fall 2006		Fall 2007		Fall 2008		Fall 2009		Fall 2010	
<b>Fall 2005 Cohort</b>												
<b>Enrolled</b>	237		155	65.40%	93	39.24%						
<b>Graduated</b>			3	1.27%	63	26.58%						
<b>Total</b>	237		158	66.67%	156	65.82%						

	Fall 2006		Fall 2007		Fall 2008		Fall 2009		Fall 2010		Fall 2011	
<b>Fall 2006 Cohort</b>												
<b>Enrolled</b>	238		145	60.92%								
<b>Graduated</b>			5	2.10%								
<b>Total</b>	238		150	63.03%								

\*Students receiving more than one degree are only counted once.

\*\*If a student receives an ASN degree, it is not reflected in this table.

**Table A6: First-time Full-time Bachelor's Degree Seeking Honors Freshman Cohort Retention & Graduation Rates  
Fall 2004 - Fall 2007**

	Fall 2004		Fall 2005		Fall 2006		Fall 2007		Fall 2008		Fall 2009	
<b>Fall 2004</b>												
<b>Enrolled</b>	37		33	89.19%	26	70.27%	26	70.27%				
<b>Graduated</b>	0		0	0.00%	0	0.00%		0.00%				
<b>Total</b>	37		33	89.19%	26	70.27%	26	70.27%				

	Fall 2005		Fall 2006		Fall 2007		Fall 2008		Fall 2009		Fall 2010	
<b>Fall 2005</b>												
<b>Enrolled</b>	41		39	95.12%	37	90.24%						
<b>Graduated</b>	0		0	0.00%	0	0.00%						
<b>Total</b>	41		39	95.12%	37	90.24%						

	Fall 2006		Fall 2007		Fall 2008		Fall 2009		Fall 2010		Fall 2011	
<b>Fall 2006</b>												
<b>Enrolled</b>	37		31	83.78%								
<b>Graduated</b>	0		0	0.00%								
<b>Total</b>	37		31	83.78%								



**Table A:7 First-time, Full-time Bachelor's Degree Seeking Freshman  
ACT Scores**

<b>Fall 2002</b>	<b>Composite</b>	<b>Math</b>	<b>English</b>	<b>Reading</b>	<b>Science Reasoning</b>
Twenty-fifth percentile	18	17	19	18	19
Fiftieth percentile	21	19	21	22	20
Seventy-fifth percentile	24	22	26	27	23
Average	21.36	19.44	22.25	22.28	20.84
Minimum	14	13	11	11	12
Maximum	32	29	35	36	34

<b>Fall 2003</b>	<b>Composite</b>	<b>Math</b>	<b>English</b>	<b>Reading</b>	<b>Science Reasoning</b>
Twenty-fifth percentile	18	16	18	18	18
Fiftieth percentile	21	18	21	22	20
Seventy-fifth percentile	24	21	26	27	23
Average	21.2	19.09	22.07	22.52	20.6
Minimum	14	13	11	12	11
Maximum	29	30	33	36	31

<b>Fall 2004</b>	<b>Composite</b>	<b>Math</b>	<b>English</b>	<b>Reading</b>	<b>Science Reasoning</b>
Twenty-fifth percentile	18	17	18	18	19
Fiftieth percentile	20	18	21	21	20
Seventy-fifth percentile	24	22	25	25	23
Average	21.03	19.15	22.01	21.55	20.65
Minimum	14	7	12	10	14
Maximum	32	30	34	35	30

<b>Fall 2005</b>	<b>Composite</b>	<b>Math</b>	<b>English</b>	<b>Reading</b>	<b>Science Reasoning</b>
Twenty-fifth percentile	18	17	19	18	18
Fiftieth percentile	22	19	22	22	21
Seventy-fifth percentile	25	23	26	27	23
Average	21.69	19.7	22.78	22.86	20.9
Minimum	11	10	10	10	11
Maximum	32	33	35	36	33

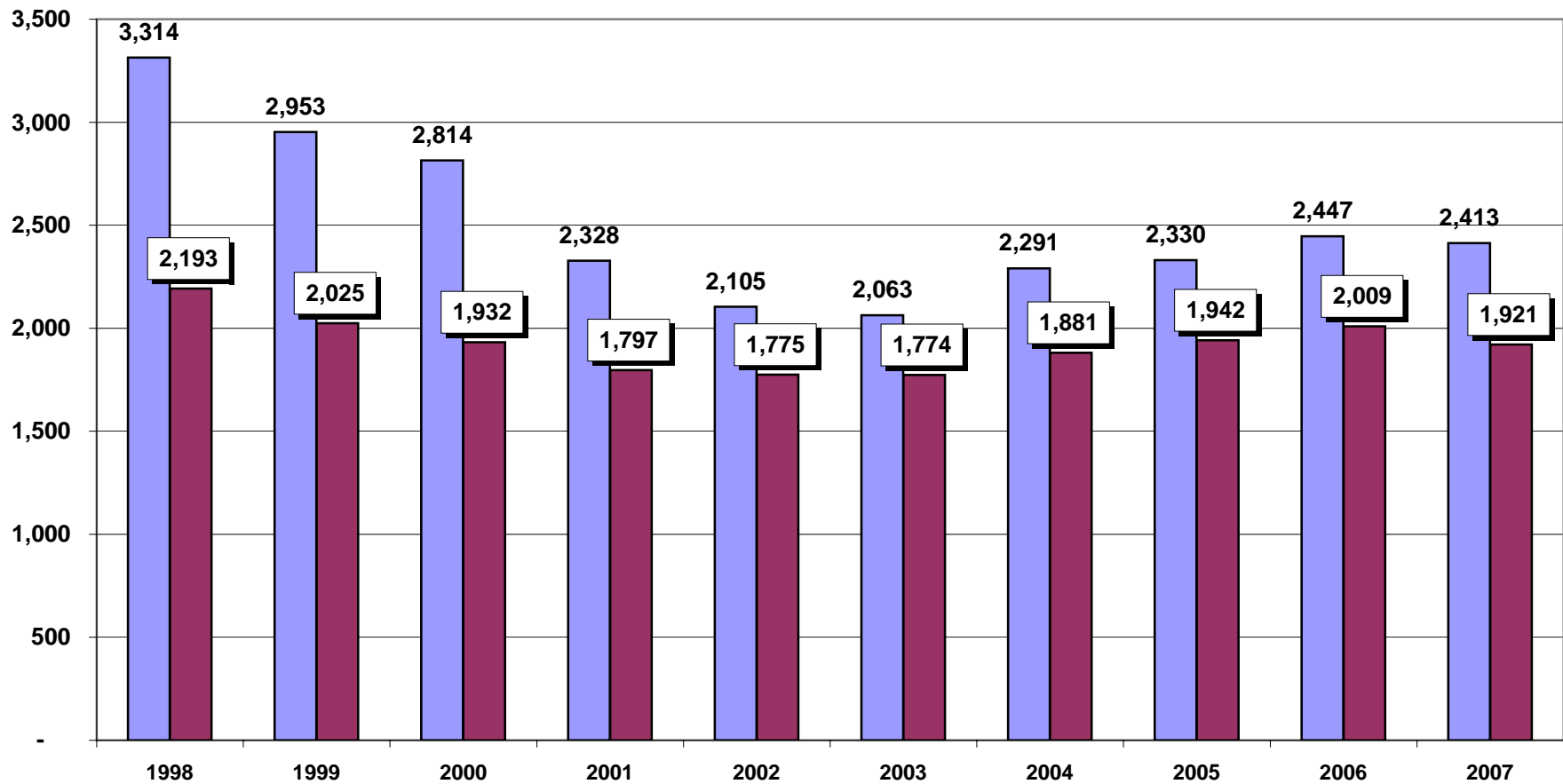
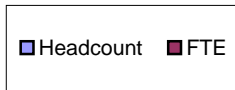
<b>Fall 2006</b>	<b>Composite</b>	<b>Math</b>	<b>English</b>	<b>Reading</b>	<b>Science Reasoning</b>
Twenty-fifth percentile	19	17	19	19	18
Fiftieth percentile	21	18	22	22	20
Seventy-fifth percentile	24	21	26	26	23
Average	21.51	19.13	22.52	23.1	20.89
Minimum	16	14	14	12	11
Maximum	32	29	36	36	33

<b>Fall 2007</b>	<b>Composite</b>	<b>Math</b>	<b>English</b>	<b>Reading</b>	<b>Science Reasoning</b>
Twenty-fifth percentile	18	16	18	18	18
Fiftieth percentile	20	18	21	21	20
Seventy-fifth percentile	24	20	25	25	23
Average	20.86	18.81	21.65	22.02	20.2
Minimum	14	13	12	13	12
Maximum	31	33	35	36	32

**Table B:1 Duplicated Headcount and FTE Enrollment****Fall Terms**

<b>Fall</b>	<b>Headcount</b>	<b>% Change Year Ago</b>	<b>Total Cr. Hrs.</b>	<b>% Change Year Ago</b>	<b>Total FTE</b>	<b>% Change Year Ago</b>
<b>1998</b>	3,314		30,996		2,193	
<b>1999</b>	2,953	-10.89%	29,212	-5.76%	2,025	-7.68%
<b>2000</b>	2,814	-4.71%	27,785	-4.88%	1,932	-4.57%
<b>2001</b>	2,328	-17.27%	26,370	-5.09%	1,797	-6.97%
<b>2002</b>	2,105	-9.58%	26,356	-0.05%	1,775	-1.24%
<b>2003</b>	2,063	-2.00%	26,352	-0.02%	1,774	-0.06%
<b>2004</b>	2,291	11.05%	27,899	5.87%	1,881	6.03%
<b>2005</b>	2,330	1.70%	28,765	3.10%	1,942	3.24%
<b>2006</b>	2,447	5.02%	29,837	3.73%	2,009	3.45%
<b>2007</b>	2,413	-1.39%	28,521	-4.41%	1,921	-4.40%

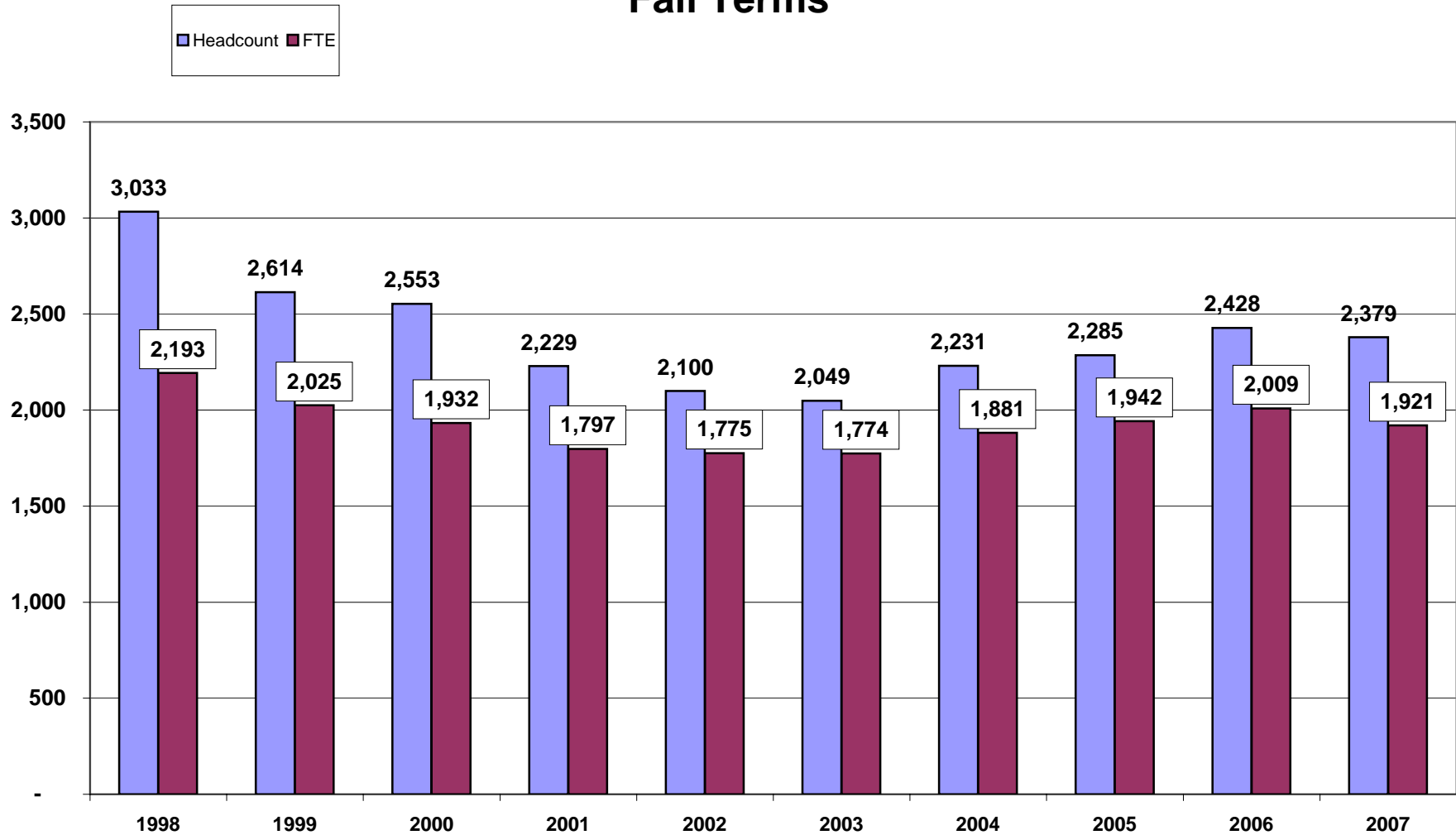
**Table B:1a**  
**Duplicated Headcount and FTE Enrollment**  
**Fall Terms**



**Table B:2 UNDUPLICATED HEADCOUNT and FTE ENROLLMENT  
Fall Terms**

<b>Fall</b>	<b>Headcount</b>	<b>% Change Year Ago</b>	<b>Total Cr. Hrs.</b>	<b>% Change Year Ago</b>	<b>Total FTE</b>	<b>% Change Year Ago</b>
<b>1998</b>	3,033		30,996		2,193	
<b>1999</b>	2,614	-13.81%	29,212	-5.76%	2,025	-7.68%
<b>2000</b>	2,553	-2.33%	27,785	-4.88%	1,932	-4.57%
<b>2001</b>	2,229	-12.69%	26,370	-5.09%	1,797	-6.97%
<b>2002</b>	2,100	-5.79%	26,356	-0.05%	1,775	-1.24%
<b>2003</b>	2,049	-2.43%	26,352	-0.02%	1,774	-0.06%
<b>2004</b>	2,231	8.88%	27,899	5.87%	1,881	6.03%
<b>2005</b>	2,285	2.42%	28,765	3.10%	1,942	3.24%
<b>2006</b>	2,428	6.26%	29,837	3.73%	2,009	3.45%
<b>2007</b>	2,379	-2.02%	28,521	-4.41%	1,921	-4.40%

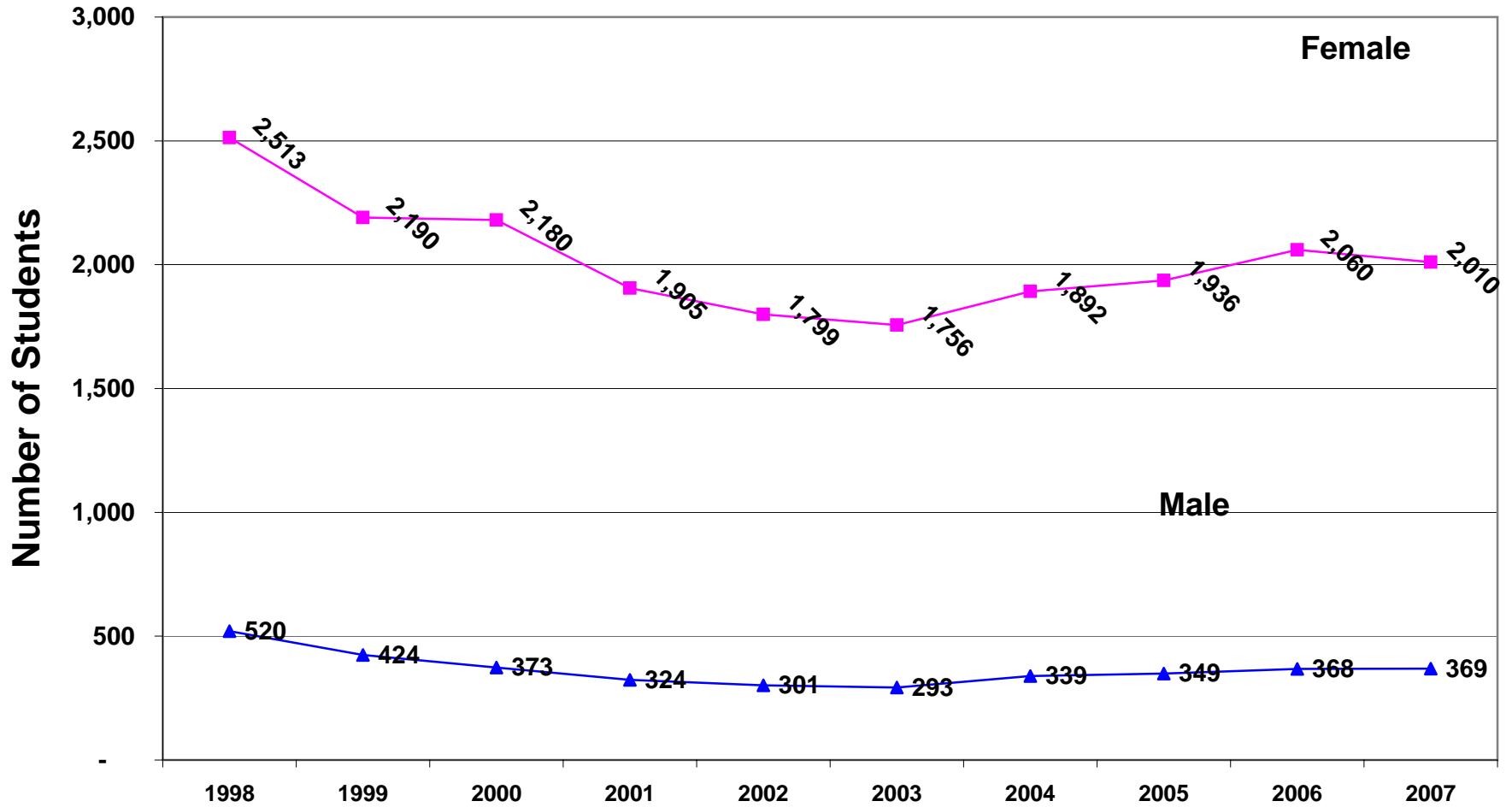
**Table B:2a**  
**Unduplicated Headcount and FTE Enrollment**  
**Fall Terms**



**Table B:3 Unduplicated Enrollment by Gender  
FALL 1998 to FALL 2007**

<b>Fall</b>	<b>Total</b>	<b>% Change</b>		<b>No. Female</b>	<b>% Female</b>	<b>No. Male</b>	<b>% Male</b>
		<b>Year Ago</b>					
<b>1998</b>	<b>3,033</b>			<b>2,513</b>	82.86%	<b>520</b>	17.14%
<b>1999</b>	<b>2,614</b>	-13.81%		<b>2,190</b>	83.78%	<b>424</b>	16.22%
<b>2000</b>	<b>2,553</b>	-2.33%		<b>2,180</b>	85.39%	<b>373</b>	14.61%
<b>2001</b>	<b>2,229</b>	-12.69%		<b>1,905</b>	85.46%	<b>324</b>	14.54%
<b>2002</b>	<b>2,100</b>	-5.79%		<b>1,799</b>	85.67%	<b>301</b>	14.33%
<b>2003</b>	<b>2,049</b>	-2.43%		<b>1,756</b>	85.70%	<b>293</b>	14.30%
<b>2004</b>	<b>2,231</b>	8.88%		<b>1,892</b>	84.81%	<b>339</b>	15.19%
<b>2005</b>	<b>2,285</b>	2.42%		<b>1,936</b>	84.73%	<b>349</b>	15.27%
<b>2006</b>	<b>2,428</b>	6.26%		<b>2,060</b>	84.84%	<b>368</b>	15.16%
<b>2007</b>	<b>2,379</b>	-2.02%		<b>2,010</b>	84.49%	<b>369</b>	15.51%

**Table B:3a**  
**Unduplicated Enrollment by Gender**  
**Fall terms**



**TABLE B:4 Unduplicated Enrollment by Ethnicity**

**Fall 1998-2007**

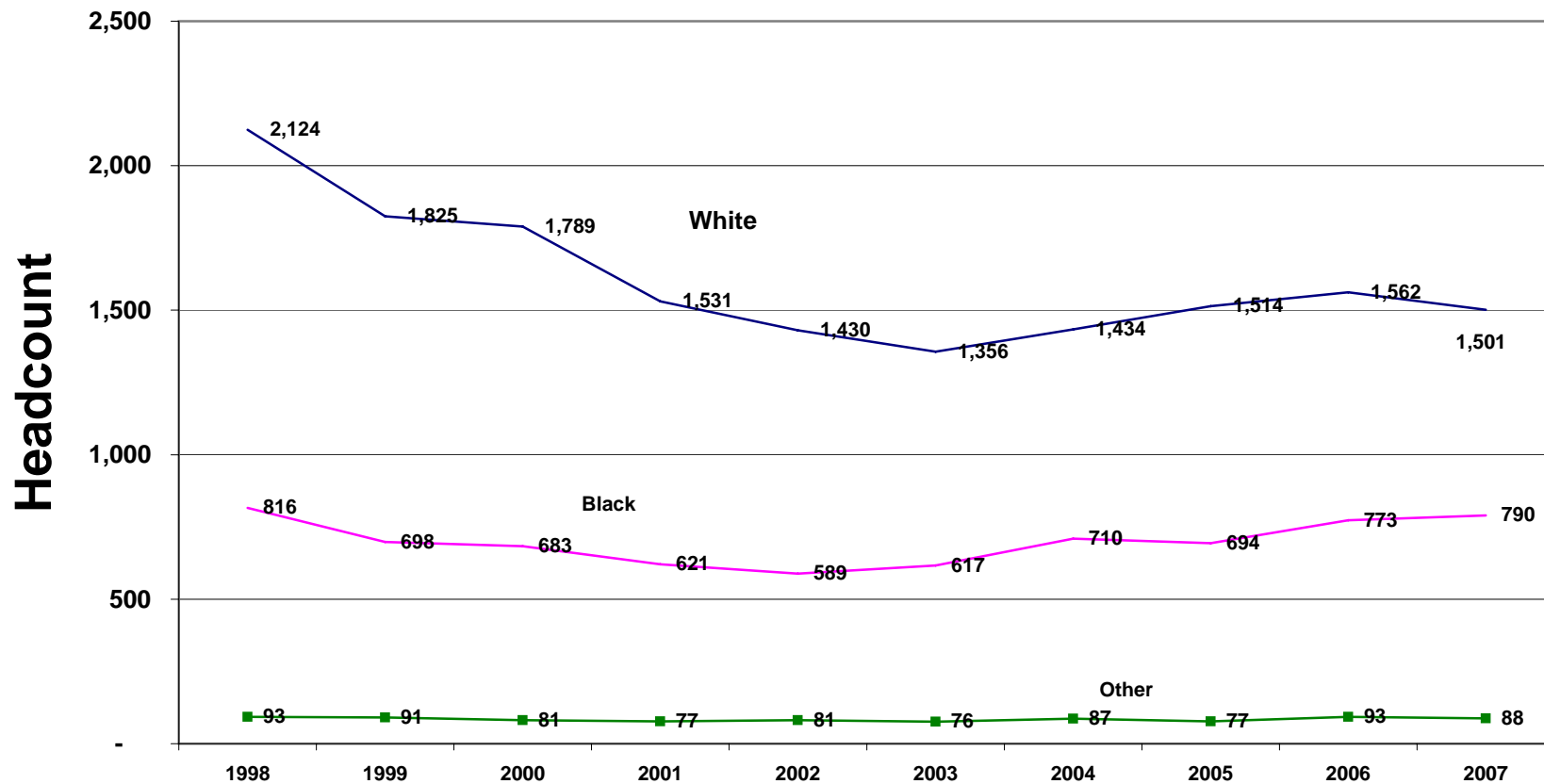
Fall	White		Black		American Indian/Alaskan Native		Asian or Pacific Islander		Hispanic		Not Ident.		Total	
	#	%	#	%	#	%	#	%	#	%	#	%	#	%
<b>1998</b>	2,124	70.0%	816	26.9%	7	0.2%	8	0.3%	18	0.6%	60	2.0%	3,033	100%
<b>1999</b>	1,825	69.8%	698	26.7%	3	0.1%	11	0.4%	17	0.7%	60	2.3%	2,614	100%
<b>2000</b>	1,789	70.1%	683	26.8%	5	0.2%	9	0.4%	13	0.5%	54	2.1%	2,553	100%
<b>2001</b>	1,531	68.7%	621	27.9%	9	0.4%	17	0.8%	15	0.7%	36	1.6%	2,229	100%
<b>2002</b>	1,430	68.1%	589	28.0%	8	0.4%	14	0.7%	17	0.8%	42	2.0%	2,100	100%
<b>2003</b>	1,356	66.2%	617	30.1%	7	0.3%	24	1.2%	13	0.6%	32	1.6%	2,049	100%
<b>2004</b>	1,434	64.3%	710	31.8%	11	0.5%	28	1.3%	15	0.7%	33	1.5%	2,231	100%
<b>2005</b>	1,514	66.3%	694	30.4%	7	0.3%	31	1.4%	15	0.7%	24	1.1%	2,285	100%
<b>2006</b>	1,562	64.3%	773	31.8%	8	0.3%	46	1.9%	20	0.8%	19	0.8%	2,428	100%
<b>2007</b>	1,501	63.1%	790	33.2%	9	0.4%	39	1.6%	18	0.8%	22	0.9%	2,379	100%



# Table B:4a

## Unduplicated Enrollment by Ethnicity

### Fall Terms

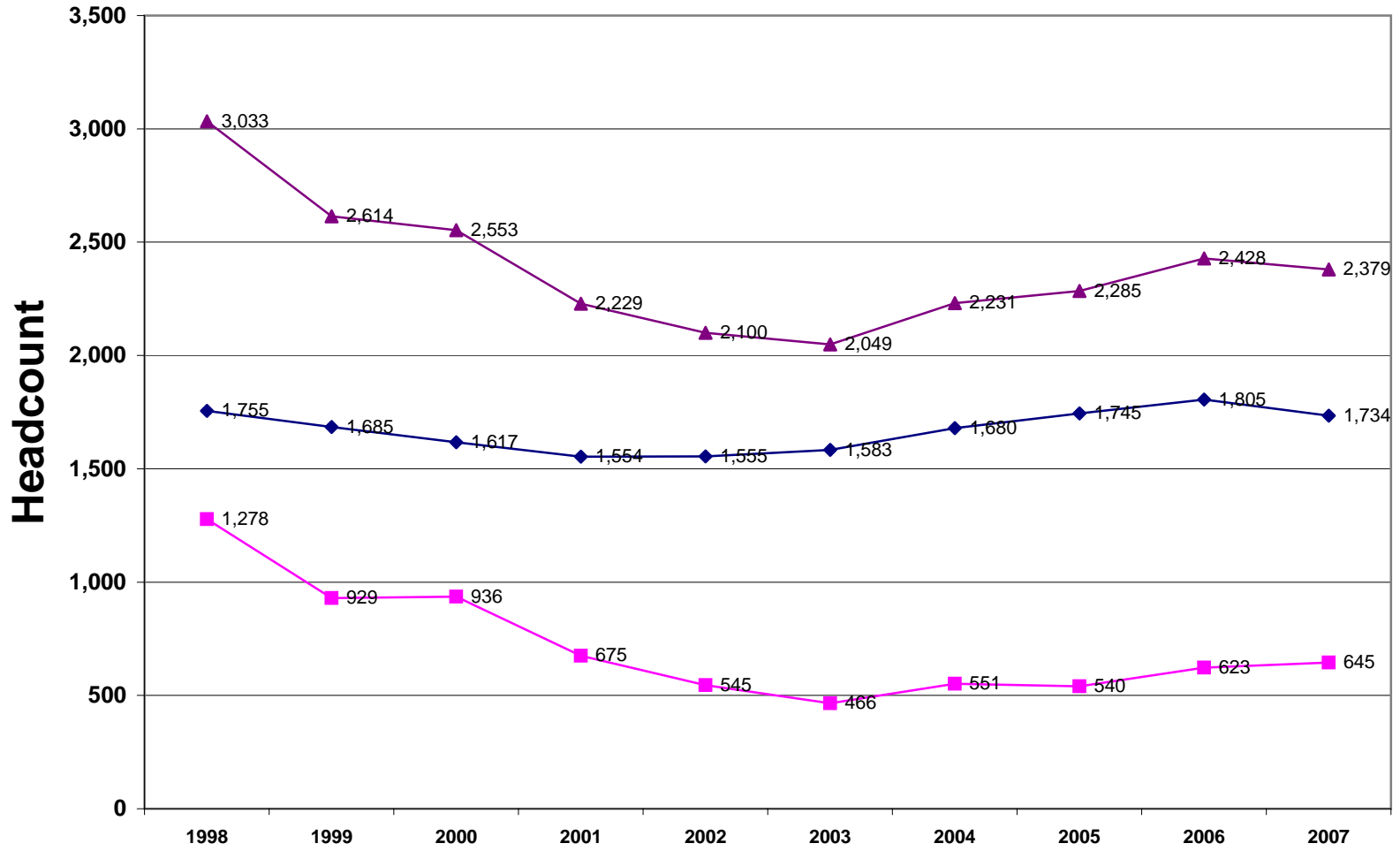
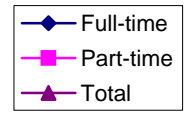


**Table B:5 Unduplicated Enrollment & Credit Hour Production by Full-time/Part-time Status  
Fall Terms**

Fall	Headcount											Credit Hours by Student Level										
	Full-time					Part-time					Total	Full-time					Part-time					Total
	UG	GR	Total	UG	GR	Total	UG	GR	Total	Total	UG	GR	Total	UG	GR	Total	UG	GR	Total	Total		
1998	1698	56%	57	2%	1755	1220	40%	58	2%	1278	3033	25896	84%	674	2%	26570	4203	14%	223	1%	4426	30996
1999	1626	62%	59	2%	1685	808	31%	121	5%	929	2614	24713	85%	698	2%	25411	3370	12%	431	1%	3801	29212
2000	1551	61%	66	3%	1617	858	34%	78	3%	936	2553	23511	85%	759	3%	24270	3182	11%	333	1%	3515	27785
2001	1484	67%	70	3%	1554	588	26%	87	4%	675	2229	22650	86%	781	3%	23431	2552	10%	387	1%	2939	26370
2002	1494	71%	61	3%	1555	462	22%	83	4%	545	2100	22811	87%	678	3%	23489	2476	9%	391	1%	2867	26356
2003	1527	75%	56	3%	1583	390	19%	76	4%	466	2049	23148	88%	674	3%	23822	2205	8%	325	1%	2530	26352
2004	1609	72%	71	3%	1680	454	20%	97	4%	551	2231	24100	86%	859	3%	24959	2493	9%	447	2%	2940	27899
2005	1668	73%	77	3%	1745	447	20%	93	4%	540	2285	24848	86%	1,008	4%	25856	2424	8%	485	2%	2909	28765
2006	1734	71%	71	3%	1805	546	22%	77	3%	623	2428	25541	86%	821	3%	26,362	3110	10%	365	1%	3475	29837
2007	1662	70%	72	3%	1734	560	24%	85	4%	645	2379	24321	85%	777	3%	25,098	3042	11%	381	1%	3423	28521

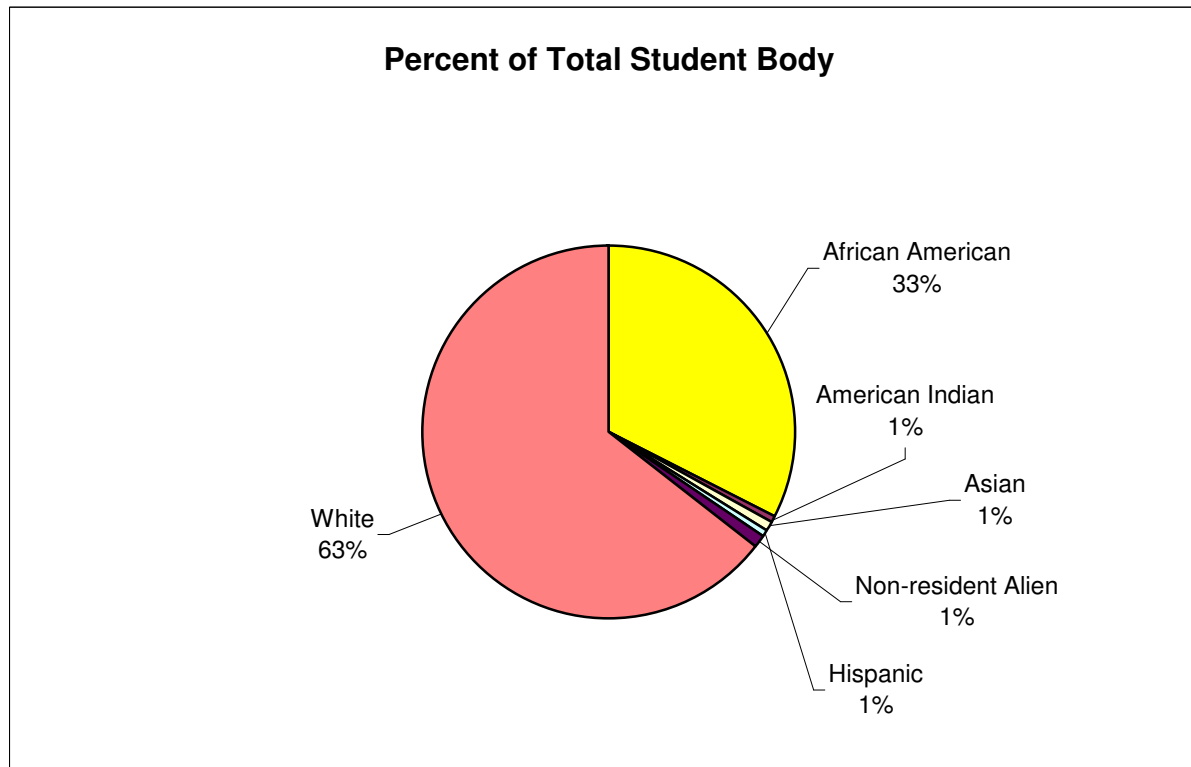
Note 1: Part-time is defined as UG enrolled 11 Cr. hrs or less or GR enrolled 8 Cr. Hrs or less.  
 Note 2: Full-time is defined as UG enrolled 12 Cr. Hrs or more or GR enrolled 9 Cr. Hrs or more.  
 Note 3: FT and PT headcount and credit hours data are based on the 10th day of Enrollment.

**Table B:5a**  
**Full-time & Part-time Unduplicated Headcount**  
**Fall Terms**



**Table B:6 Unduplicated Enrollment by Ethnicity, Gender, FT/PT  
Fall 2007**

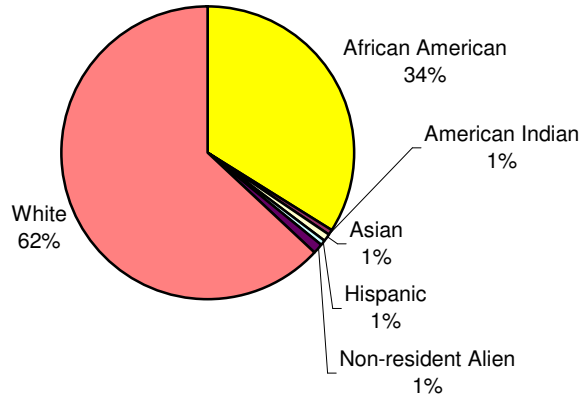
Ethnicity	Full-time		Full-time Total	Part-time		Part-time Total	Total
	Female	Male		Female	Male		
African American	487	53	540	224	26	250	790
American Indian	8	1	9				9
Asian	12	2	14	15	10	25	39
Hispanic	9	1	10	2	6	8	18
Non-resident Alien	16	5	21	1		1	22
White	962	178	1140	274	87	361	1501
<b>Total</b>	<b>1494</b>	<b>240</b>	<b>1734</b>	<b>516</b>	<b>129</b>	<b>645</b>	<b>2379</b>



**Table B:6a Undergraduate, Unduplicated Enrollment by Ethnicity, Gender, FT/PT  
Fall 2007**

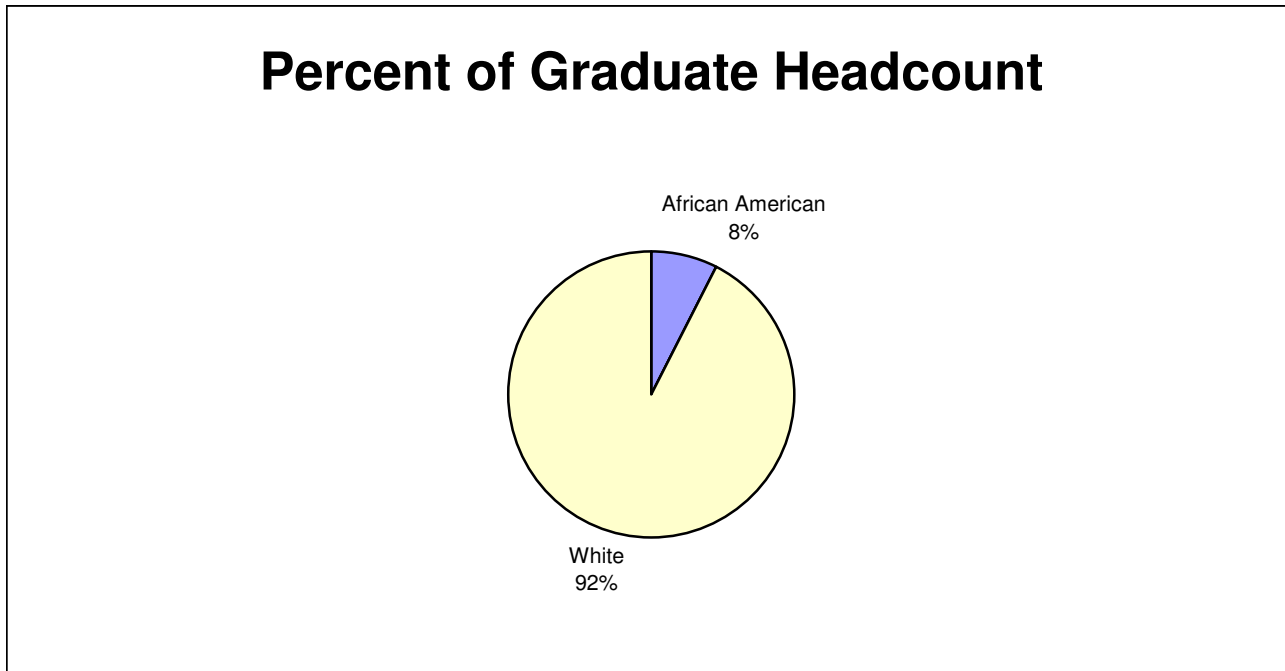
Ethnicity	Full-time		Full-time Total	Part-time		Part-time Total	Total
	Female	Male		Female	Male		
African American	482	53	535	203	22	225	760
American Indian	8	1	9				9
Asian	12	2	14	15	10	25	39
Hispanic	9	1	10	1	6	7	17
Non-resident Alien	16	5	21	1		1	22
White	901	172	1073	219	83	302	1375
<b>Total</b>	<b>1428</b>	<b>234</b>	<b>1662</b>	<b>439</b>	<b>121</b>	<b>560</b>	<b>2222</b>

**Percent of Undergraduate Headcount**



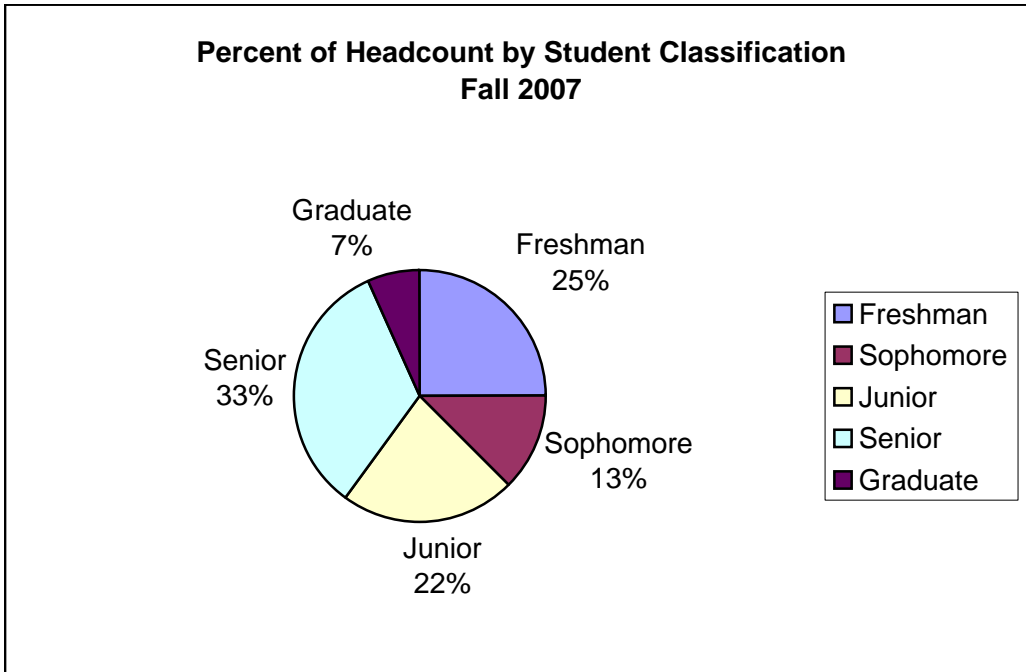
**Table B:6b Graduate Unduplicated Enrollment by Ethnicity, Gender, FT/PT  
Fall 2007**

Ethnicity	Full-Time		Full-Time Total	Part-time		Part-time Total	Total
	Female	Male		Female	Male		
African American	5		5	21	4	25	30
Hispanic				1		1	1
White	61	6	67	55	4	59	126
<b>Total</b>	<b>66</b>	<b>6</b>	<b>72</b>	<b>77</b>	<b>8</b>	<b>85</b>	<b>157</b>

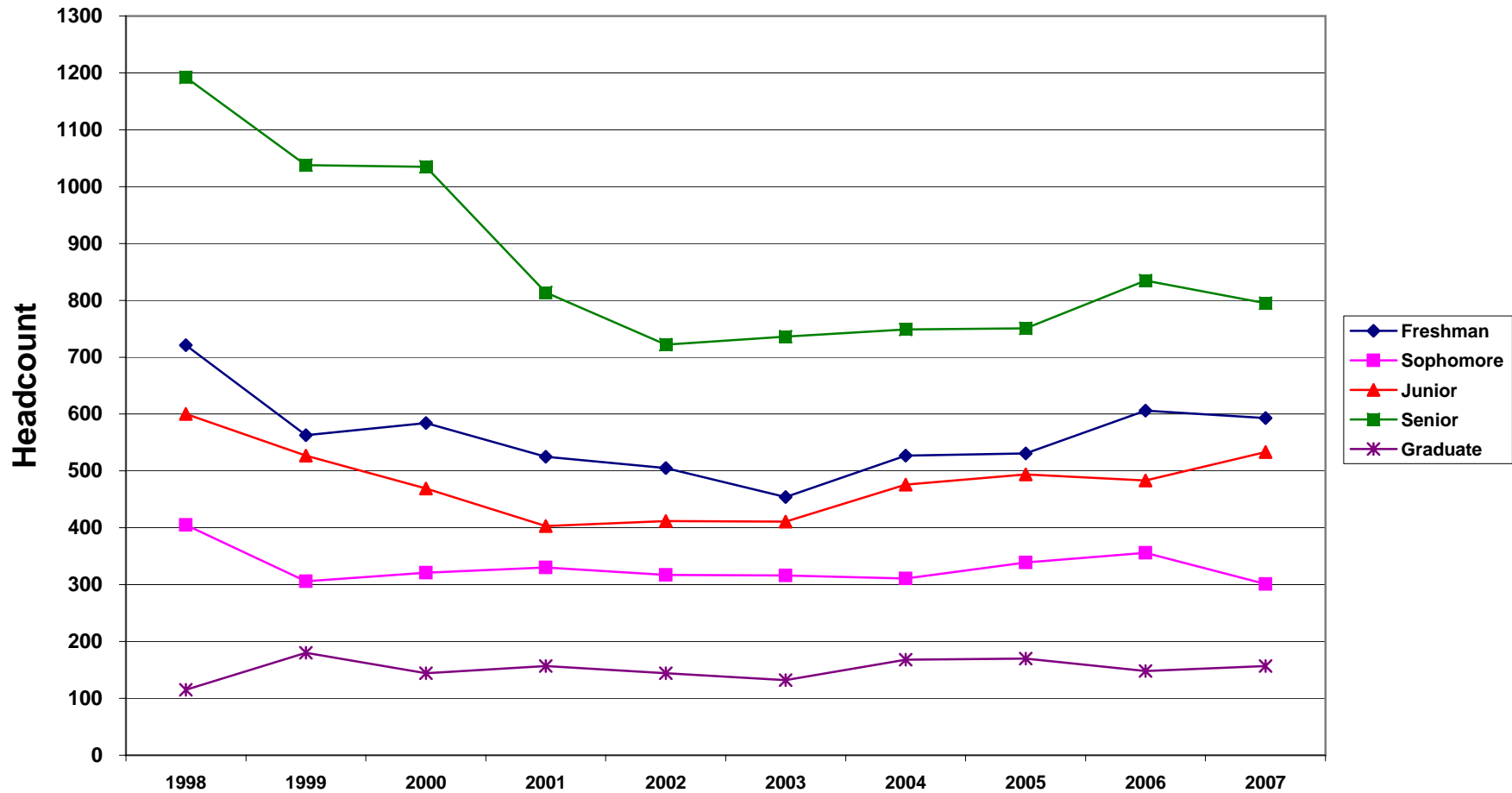


**TABLE B:7 Unduplicated Enrollment by Student Classification  
FALL TERMS**

<b>Fall</b>	<b>Freshman</b>	<b>Sophomore</b>	<b>Junior</b>	<b>Senior</b>	<b>Graduate Total</b>	
<b>1998</b>	721	405	600	1,192	115	3,033
<b>1999</b>	563	306	527	1,038	180	2,614
<b>2000</b>	584	321	469	1,035	144	2,553
<b>2001</b>	525	330	403	814	157	2,229
<b>2002</b>	505	317	412	722	144	2,100
<b>2003</b>	454	316	411	736	132	2,049
<b>2004</b>	527	311	476	749	168	2,231
<b>2005</b>	531	339	494	751	170	2,285
<b>2006</b>	606	356	483	835	148	2,428
<b>2007</b>	593	301	533	795	157	2,379



**Table B:7a**  
**Unduplicated Enrollment by Student Classification**  
**Fall Terms**





**Table B:8 Headcount Enrollment by Credit Hours  
& Student Classification  
Fall 2007**

Credit Hours	Class					Total	%	Cum. %
	FR	GR	JR	SO	SR			
1	5	1	1	1	26	34	1.4%	1.4%
2	2	0	1	0	3	6	0.3%	1.7%
3	133	41	9	6	29	218	9.2%	10.8%
4	1	1	1	1	10	14	0.6%	11.4%
5	0	0	1	0	4	5	0.2%	11.6%
6	61	41	27	12	78	219	9.2%	20.8%
7	3	1	6	5	16	31	1.3%	22.2%
8	1	0	2	2	2	7	0.3%	22.4%
9	12	14	20	9	26	81	3.4%	25.9%
10	2	30	10	1	19	62	2.6%	28.5%
11	3	0	2	1	6	12	0.5%	29.0%
12	42	13	105	55	173	388	16.3%	45.3%
13	61	15	67	41	71	255	10.7%	56.0%
14	86	0	29	25	26	166	7.0%	63.0%
15	57	0	116	44	109	326	13.7%	76.7%
16	69	0	48	40	97	254	10.7%	87.3%
17	36	0	27	18	20	101	4.2%	91.6%
18	13	0	38	23	44	118	5.0%	96.6%
19	6	0	21	17	25	69	2.9%	99.5%
20	0	0	2	0	1	3	0.1%	99.6%
21	0	0	0	0	9	9	0.4%	100.0%
22	0	0	0	0	1	1	0.0%	100.0%
<b>Total</b>	593	157	533	301	795	2379	100.0%	

**Table B:9 Age Distribution by Student Classification  
Unduplicated Headcount**

Age Group	Freshman		Sophomore		Junior		Senior		Graduate		Total	
	FA 2007	FA 2006	FA 2007	FA 2006	FA 2007	FA 2006	FA 2007	FA 2006	FA 2007	FA 2006	FA 2007	FA 2006
<b>Under 18</b>	192	182	1	0	0	0	3	0	0	0	196	182
<b>18 and 19</b>	304	317	101	119	7	9	1	1	0	0	413	446
<b>20 and 21</b>	28	29	100	131	280	241	166	172	0	0	574	573
<b>22 to 24</b>	17	17	33	34	95	74	231	257	33	35	409	417
<b>25 to 29</b>	20	16	22	26	50	62	152	151	34	32	278	287
<b>30 to 34</b>	11	10	13	14	34	35	83	84	25	22	166	165
<b>35 to 39</b>	6	14	11	10	31	22	44	62	19	21	111	129
<b>40 to 49</b>	7	13	14	13	27	32	76	67	35	34	159	159
<b>50 to 64</b>	5	8	6	8	9	8	33	35	11	4	64	63
<b>65 and Over</b>	3	0	0	1	0	0	6	6	0	0	9	7
<b>Unknown</b>	0	0	0	0	0	0	0	0	0	0	0	0
<b>Total</b>	<b>593</b>	<b>606</b>	<b>301</b>	<b>356</b>	<b>533</b>	<b>483</b>	<b>795</b>	<b>835</b>	<b>157</b>	<b>148</b>	<b>2,379</b>	<b>2,428</b>

	2007	Fall 2006
Average Age	25.17	25.15
Average Age Men	23.42	24.73
Average Age Women	25.49	25.22

**Table B:10 Non-traditional Students Vs. Traditional Students  
Unduplicated Headcount - Fall Terms**

	Non-traditional						Traditional						Both Trad. & Non-trad.
	FT		PT		Total		FT		PT		Total		Total
	HC	%	HC	%	HC	%	HC	%	HC	%	HC	%	
Fall 1998	418	13.78%	977	32.21%	1395	45.99%	1337	44.08%	301	9.92%	1638	54.01%	3033
Fall 1999	401	15.34%	713	27.28%	1114	42.62%	1284	49.12%	216	8.26%	1500	57.38%	2614
Fall 2000	404	15.82%	711	27.85%	1115	43.67%	1213	47.51%	225	8.81%	1438	56.33%	2553
Fall 2001	394	17.68%	584	26.20%	978	43.88%	1160	52.04%	91	4.08%	1251	56.12%	2229
Fall 2002	372	17.71%	368	17.52%	740	35.24%	1183	56.33%	177	8.43%	1360	64.76%	2100
Fall 2003	405	19.77%	321	15.67%	726	35.43%	1178	57.49%	145	7.08%	1323	64.57%	2049
Fall 2004	470	21.07%	381	17.08%	851	38.14%	1210	54.24%	170	7.62%	1380	61.86%	2231
Fall 2005	464	20.31%	357	15.62%	821	35.93%	1281	56.06%	183	8.01%	1464	64.07%	2285
Fall 2006	459	18.90%	351	14.46%	810	33.36%	1346	55.44%	272	11.20%	1618	66.64%	2428
Fall 2007	440	18.50%	347	14.59%	787	33.08%	1294	54.39%	298	12.53%	1592	66.92%	2379

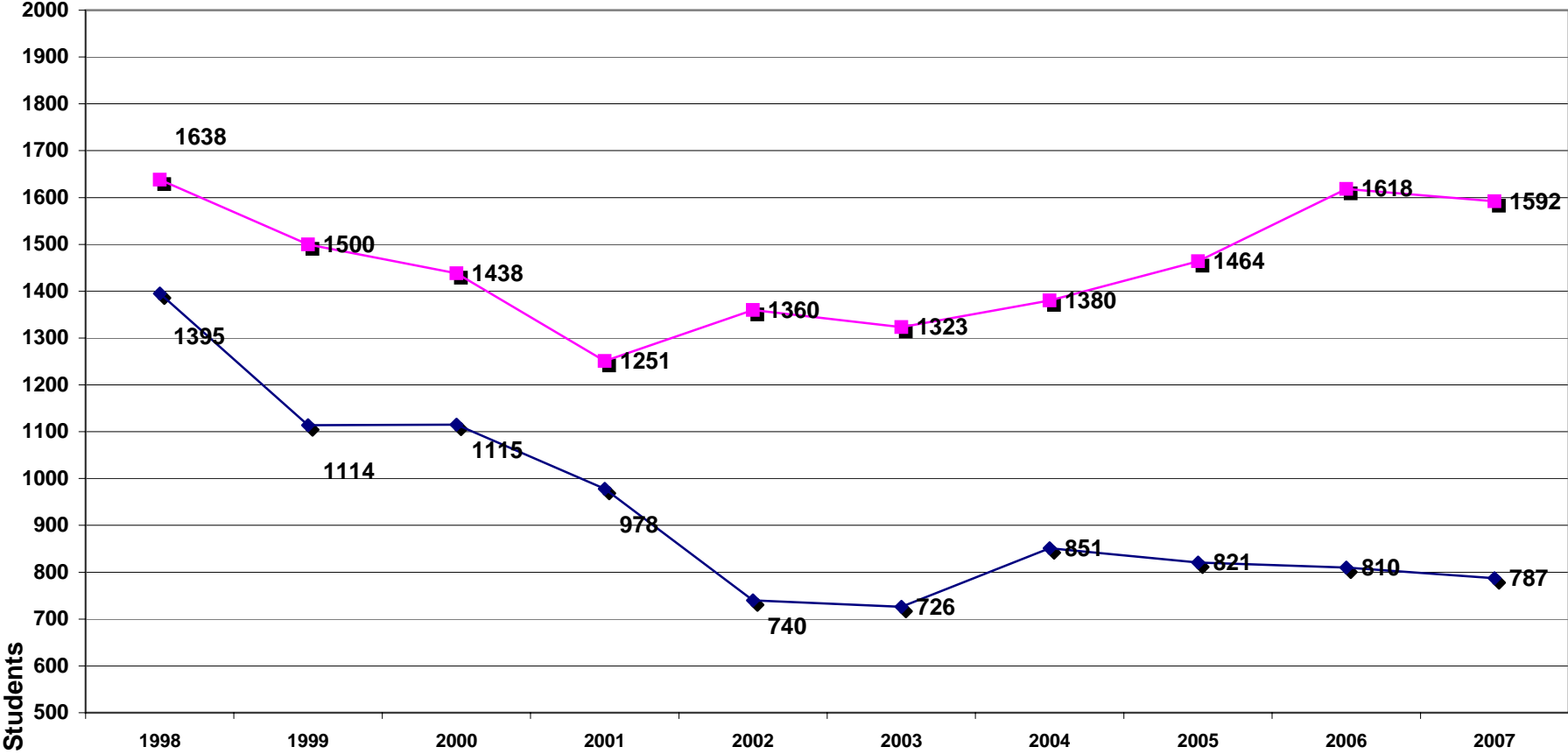
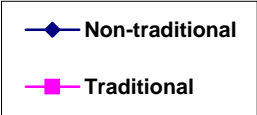
\*Non-traditional Students are defined as those who are at least 25 years of age.

\*\*HC = Headcount

\*\*\* Part-time is defined as UG enrolled 11 Cr. hrs or less or GR enrolled 8 Cr. Hrs or less

\*\*\*\*Full-time is defined as UG enrolled 12 Cr. Hrs or more or GR enrolled 9 Cr. Hrs or more.

**Table B:10a**  
**Non-traditional Vs. Traditional Students**  
**Unduplicated Headcount - Fall Terms**



**Table B:11 Residence Hall Student Headcount**

Residence Hall	Fall 98	Fall 99	Fall 00	Fall 01	Fall 02	Fall 03	Fall 04	Fall 05	Fall 06	Fall 07
Callaway	109	118	111	99	119	103	113	116	94	88
Columbus	0	0	0	0	50	47	58	46	46	51
Frazier	64	49	53	59	0	0	0	0	0	0
Goen	154	150	141	112	53	66	72	35	0	0
Grossnickle	38	37	38	35	40	39	43	35	37	42
Hastings-Simmons	42	42	45	49	49	49	54	51	49	55
Jones	146	138	130	128	133	129	116	105	164	165
Kincannon	133	137	133	115	143	123	144	166	175	163
<b>Total</b>	<b>686</b>	<b>671</b>	<b>651</b>	<b>597</b>	<b>587</b>	<b>556</b>	<b>600</b>	<b>554</b>	<b>565</b>	<b>564</b>

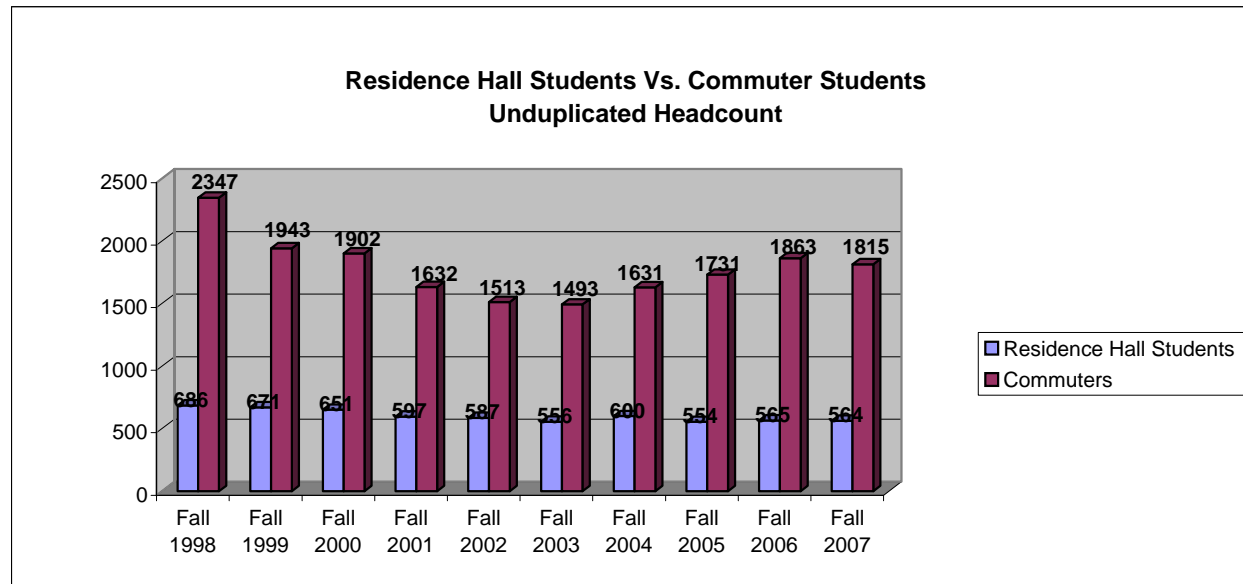
**Fall 2007 Residence Hall Enrollment by Ethnicity and Gender**

Residence Hall	White	Black	Other	Total
Callaway	73	12	3	88
Columbus	36	11	4	51
Goen	0	0	0	0
Grossnickle	34	6	2	42
Hastings-Simmons	43	9	3	55
Jones	68	87	10	165
Kincannon	67	87	9	163
<b>Total</b>	<b>321</b>	<b>212</b>	<b>31</b>	<b>564</b>

Men	Women	Total
0	88	88
51	0	51
0	0	0
4	38	42
0	55	55
0	165	165
19	144	163
<b>74</b>	<b>490</b>	<b>564</b>

**Table B:12  
Residence Hall Students Vs. Commuter Students  
Unduplicated Headcount**

	Residence Hall Students		Commuter Students		Total	
	#	%	#	%	#	%
Fall 1998	686	22.62%	2347	77.38%	3033	100%
Fall 1999	671	25.67%	1943	74.33%	2614	100%
Fall 2000	651	25.50%	1902	74.50%	2553	100%
Fall 2001	597	26.78%	1632	73.22%	2229	100%
Fall 2002	587	27.95%	1513	72.05%	2100	100%
Fall 2003	556	27.14%	1493	72.86%	2049	100%
Fall 2004	600	26.89%	1631	73.11%	2231	100%
Fall 2005	554	24.25%	1731	75.75%	2285	100%
Fall 2006	565	23.27%	1863	76.73%	2428	100%
Fall 2007	564	23.71%	1815	76.29%	2379	100%



**Table B:13 Unduplicated Enrollment by State of Residence  
Fall 2003-2007**

<i>State</i>	<i>2003</i>	<i>2004</i>	<i>2005</i>	<i>2006</i>	<i>2007</i>
Alabama	122	127	135	122	135
American Samoa	0	0	0	1	1
Arkansas	3	5	6	2	4
California	1	1	2	4	2
Colorado	1	0	0	0	0
Connecticut	0	0	1	0	0
Delaware	0	0	1	0	0
Florida	4	4	4	2	1
Georgia	5	4	6	6	3
Hawaii	0	0	0	1	1
Illinois	0	2	1	0	0
Indiana	1	1	0	1	0
Iowa	0	0	0	0	1
Kansas	0	1	1	1	1
Kentucky	3	4	3	2	3
Louisiana	6	11	11	8	7
Maine	0	0	0	1	2
Maryland	0	0	0	0	1
Michigan	1	0	0	1	3
Mississippi	1830	1998	2043	2223	2162
Missouri	3	3	2	1	0
New Hampshire	0	1	0	0	0
New Jersey	0	0	2	0	0
New Mexico	1	1	1	1	0
New York	1	0	0	0	0
North Carolina	1	1	0	0	0
Ohio	0	3	2	2	1
Oklahoma	0	1	3	1	1
Oregon	0	0	0	0	1
South Carolina	0	0	2	1	0
Tennessee	29	19	23	23	20
Texas	4	7	7	3	4
Virginia	1	3	1	1	1
Washington	2	1	0	1	2
Wisconsin	0	2	1	0	0
<b>Total U.S. Enrollment</b>	<b>2019</b>	<b>2200</b>	<b>2258</b>	<b>2409</b>	<b>2357</b>

**Table B:14 Unduplicated Enrollment by State of Residence and Classification  
Fall 2007**

<i>State</i>	<i>Freshmen</i>	<i>Sophomore</i>	<i>Junior</i>	<i>Senior</i>	<i>Graduate</i>	<i>Total</i>
Alabama	34	26	31	41	3	135
American Samoa	0	0	0	1	0	1
Arkansas	0	0	2	1	1	4
California	1	1	0	0	0	2
Florida	0	0	0	1	0	1
Georgia	0	0	1	2	0	3
Hawaii	0	0	0	1	0	1
Iowa	0	0	0	1	0	1
Kansas	0	0	0	1	0	1
Kentucky	0	0	0	2	1	3
Louisiana	2	0	1	1	3	7
Maine	1	0	1	0	0	2
Maryland	0	1	0	0	0	1
Michigan	1	1	1	0	0	3
Mississippi	523	266	477	750	146	2162
Ohio	0	0	1	0	0	1
Oklahoma	1	0	0	0	0	1
Oregon	0	0	0	1	0	1
Tennessee	4	4	7	3	2	20
Texas	1	1	0	1	1	4
Virginia	1	0	0	0	0	1
Washington	2	0	0	0	0	2
<b><i>Total</i></b>	<b>571</b>	<b>300</b>	<b>522</b>	<b>807</b>	<b>157</b>	<b>2357</b>
<b><i>Percent of total</i></b>	<b>24.23%</b>	<b>12.73%</b>	<b>22.15%</b>	<b>34.24%</b>	<b>6.66%</b>	



**Table B:15 Unduplicated Headcount Enrollment by Country  
Fall 2003-2007**

<i>Country</i>	<i>2003</i>	<i>2004</i>	<i>2005</i>	<i>2006</i>	<i>2007</i>
Albania	1	1	0	0	0
Bulgaria	1	1	2	1	1
Cameroon	0	0	0	0	1
China	1	1	1	0	0
Ecuador	1	0	0	0	0
France	0	0	1	0	0
Germany	0	1	1	0	1
Ghana	2	1	0	0	0
Honduras	1	1	1	1	0
India	0	0	1	0	0
Jamaica	0	1	1	1	1
Japan	0	1	1	2	2
Kazakhstan	1	0	0	0	0
Kenya	8	7	3	0	4
Korea, South	0	0	1	0	0
Nigeria	2	5	4	2	1
Peru	0	1	1	0	0
Romania	3	3	3	2	0
Russia	1	1	0	0	1
Taiwan	2	2	1	2	1
Trinidad and Tobago	1	0	1	1	2
Ukraine	2	2	1	0	0
United Kingdom	1	0	0	0	0
Venezuela	0	0	0	1	1
Vietnam	1	2	2	4	4
Zambia	1	0	1	2	2
Foreign Students	30	31	27	19	22
Countries Represented	17	16	18	11	13

**Table B:16 Unduplicated Enrollment by MS County  
Fall 2003-2007**

<i>County</i>	<i>2003</i>	<i>2004</i>	<i>2005</i>	<i>2006</i>	<i>2007</i>
Adams	6	2	3	4	8
Alcorn	6	7	11	11	11
Amite	4	3	2	0	2
Attala	16	15	18	12	10
Benton	1	2	3	7	5
Bolivar	7	7	8	10	11
Calhoun	4	3	12	11	7
Carroll	2	3	3	4	1
Chickasaw	31	38	36	37	41
Choctaw	12	13	13	12	15
Claiborne	1	1	0	1	1
Clarke	3	4	4	6	6
Clay	114	122	121	122	127
Coahoma	3	1	4	3	4
Copiah	3	2	1	4	5
Covington	2	2	0	0	0
DeSoto	14	27	29	42	36
Forrest	4	5	5	8	11
Franklin	0	0	1	0	0
George	2	1	3	2	1
Greene	0	2	0	2	1
Grenada	7	8	8	8	11
Hancock	6	6	8	6	6
Harrison	24	30	26	37	33
Hinds	40	48	51	59	50
Holmes	10	8	6	3	1
Humphreys	1	1	1	2	2
Issaquena	0	1	1	0	0
Itawamba	20	11	17	22	21
Jackson	27	39	37	48	40
Jasper	3	5	6	5	2
Jefferson	0	1	0	0	0
Jefferson Davis	2	2	2	2	4
Jones	6	4	7	9	7
Kemper	4	6	13	7	10
Lafayette	7	5	5	8	11
Lamar	3	9	4	5	10
Lauderdale	9	11	20	27	16

<i>County</i>	<i>2003</i>	<i>2004</i>	<i>2005</i>	<i>2006</i>	<i>2007</i>
Lawrence	0	0	1	2	0
Leake	2	3	7	11	10
Lee	52	64	64	64	70
Leflore	5	8	5	11	12
Lincoln	4	3	3	3	6
Lowndes	813	846	847	842	839
Madison	17	22	35	48	31
Marion	0	0	0	2	3
Marshall	5	5	5	9	12
Monroe	148	163	152	169	159
Montgomery	7	4	2	4	5
Neshoba	14	18	13	17	19
Newton	7	7	9	12	12
Noxubee	57	57	68	100	83
Oktibbeha	119	124	127	146	133
Panola	3	7	8	7	7
Pearl River	8	9	12	13	6
Perry	0	1	1	1	1
Pike	3	4	3	5	6
Pontotoc	7	11	13	17	12
Prentiss	11	10	8	9	13
Quitman	2	2	2	1	2
Rankin	25	31	32	30	38
Scott	3	4	4	6	10
Sharkey	1	0	0	1	1
Simpson	0	1	0	0	5
Smith	5	2	2	1	0
Stone	1	1	1	0	0
Sunflower	5	9	5	4	6
Tallahatchie	4	3	3	4	1
Tate	6	4	2	5	6
Tippah	5	6	8	6	5
Tishomingo	5	4	3	10	11
Tunica	2	2	0	0	1
Union	4	7	14	16	11
Walthall	1	1	0	0	0
Warren	7	7	12	8	7
Washington	16	27	18	24	20
Wayne	4	3	4	6	6
Webster	13	23	13	12	17
Wilkinson	3	1	0	2	2

<i>County</i>	<i>2003</i>	<i>2004</i>	<i>2005</i>	<i>2006</i>	<i>2007</i>
Winston	27	29	36	37	37
Yalobusha	2	1	5	4	1
Yazoo	3	9	7	8	9
<b><i>Total MS Enrollment</i></b>	1830	1998	2043	2223	2162
<b><i># Represented</i></b>	74	78	72	73	74

**Table C:1 Enrollment by Major and Program Type  
Unduplicated Headcount - Fall 2003-2007**

	2003	2004	2005	2006	2007	5 Year	5 Year
	Total	Total	Total	Total	Total	# Change	%Change
<i>Arts &amp; Sciences</i>	451	504	482	492	467	16	3.55%
Art Education	17	19	19	21	17	0	0.00%
Biology	45	66	74	82	70	25	55.56%
Biology-Teacher Certification	7	6	6	9	14	7	100.00%
Broadcasting	3	0	0	0	0	-3	-100.00%
Chemistry	14	10	11	8	16	2	14.29%
Communication	42	72	48	50	47	5	11.90%
Communication - Broadcasting	8	1	0	0	0	-8	-100.00%
Communication - Journalism	2	0	0	0	0	-2	-100.00%
Communication-Public Relations	6	0	0	0	0	-6	-100.00%
English	27	32	39	55	40	13	48.15%
English - Creative Writing	7	2	1	1	4	-3	-42.86%
English-Teacher Certification	19	22	16	14	13	-6	-31.58%
Fine Art	12	4	4	10	3	-9	-75.00%
Graphic Design	17	19	18	23	25	8	47.06%
History	22	16	20	19	19	-3	-13.64%
History-Teacher Certification	6	8	8	10	6	0	0.00%
Interior Design	34	29	24	17	7	-27	-79.41%
Journalism	1	0	0	0	0	-1	-100.00%
Mathematics	16	19	15	13	14	-2	-12.50%
Mathematics - Teacher Cert	5	13	10	9	1	-4	-80.00%
Microbiology	11	13	13	9	11	0	0.00%
Music	5	3	3	6	4	-1	-20.00%
Music - Commercial	4	3	0	0	0	-4	-100.00%
Music Education	11	8	10	10	15	4	36.36%
Music Therapy	11	10	10	13	10	-1	-9.09%
Paralegal Studies	47	53	56	36	50	3	6.38%
Physical Science	1	1	0	0	0	-1	-100.00%
Physical Science-Teacher Cert	2	1	1	0	0	-2	-100.00%
Political Science	17	16	20	12	14	-3	-17.65%
Social Sciences	6	15	12	21	19	13	216.67%
Social Sciences - Teacher Cert	9	14	14	14	7	-2	-22.22%
Spanish	2	4	4	2	4	2	100.00%
Spanish - Teaching	0	1	0	0	1	1	100.00%

	2003	2004	2005	2006	2007	5 Year	5 Year
	Total	Total	Total	Total	Total	# Change	%Change
Studio Art	11	16	13	16	17	6	54.55%
Theatre	4	8	13	12	19	15	375.00%

<i>Business</i>	216	220	214	205	202	-14	-6.48%
Accounting	59	71	76	67	57	-2	-3.39%
Business Admin - General Bus	32	42	38	45	66	34	106.25%
Business Admin - IRM	3	1	0	0	0	-3	-100.00%
Business Admin - Management	30	35	34	30	22	-8	-26.67%
Business Admin - Marketing	34	25	27	25	19	-15	-44.12%
Business Admin - MIS	55	45	39	38	38	-17	-30.91%
Business Admin - Office Admin	2	1	0	0	0	-2	-100.00%
Fashion Merchandising	1	0	0	0	0	-1	-100.00%

<i>Culinary Arts</i>	64	75	96	108	101	37	57.81%
Culinary Arts	60	72	96	108	101	41	68.33%
Culinary Arts Certificate	4	3	0	0	0	-4	-100.00%

<i>Education &amp; Human Sciences</i>	507	564	601	629	628	121	23.87%
Differentiated Instruction	0	1	8	5	7	7	100.00%
Education - MAT	16	15	23	18	9	-7	-43.75%
Elementary Education	246	248	269	272	277	31	12.60%
Exercise Sci-Physical Therapy	4	19	24	43	37	33	825.00%
Family Studies	74	77	86	87	83	9	12.16%
Family Studies - Teaching	8	4	5	4	7	-1	-12.50%
Gifted Studies	8	7	10	10	13	5	62.50%
Health Education	12	40	37	38	43	31	258.33%
Instructional Management	11	9	2	1	0	-11	-100.00%
Kinesiology - Sport Management	3	6	9	4	1	-2	-66.67%
Kinesiology - Teaching	7	5	4	13	18	11	157.14%
Kinesiology-Exercise Science	25	28	22	23	25	0	0.00%
Pre-Occupational Therapy	4	3	6	2	4	0	0.00%
Psychology	76	75	78	95	88	12	15.79%
Reading/Literacy	13	27	18	14	16	3	23.08%

<i>Graduate Unclassified</i>	17	4	1	8	9	-8	-47.06%
Unclassified - Graduate	17	4	1	8	9	-8	-47.06%

<i>2003</i>	<i>2004</i>	<i>2005</i>	<i>2006</i>	<i>2007</i>	<i>5 Year</i>	<i>5 Year</i>
<i>Total</i>	<i>Total</i>	<i>Total</i>	<i>Total</i>	<i>Total</i>	<i># Change</i>	<i>%Change</i>

<i>Nursing &amp; Speech Language Pathology</i>	475	550	583	575	579	104	21.89%
Associate of Science Nursing	122	121	114	112	102	-20	-16.39%
Bachelor of Science Nursing	98	103	107	115	120	22	22.45%
Family Nurse Clinician - MSN	0	0	0	1	1	1	100.00%
Nursing - BSN - Tupelo	27	39	37	39	38	11	40.74%
Pre-Nursing ASN	53	70	72	72	82	29	54.72%
Pre-Nursing BSN	83	116	131	131	131	48	57.83%
Pre-Nursing BSN - Tupelo	2	1	4	0	0	-2	-100.00%
Primary Care Family	35	39	43	35	41	6	17.14%
Speech/Language Pathology	34	35	47	52	46	12	35.29%
Speech/Language Pathology - MS	21	26	28	18	18	-3	-14.29%

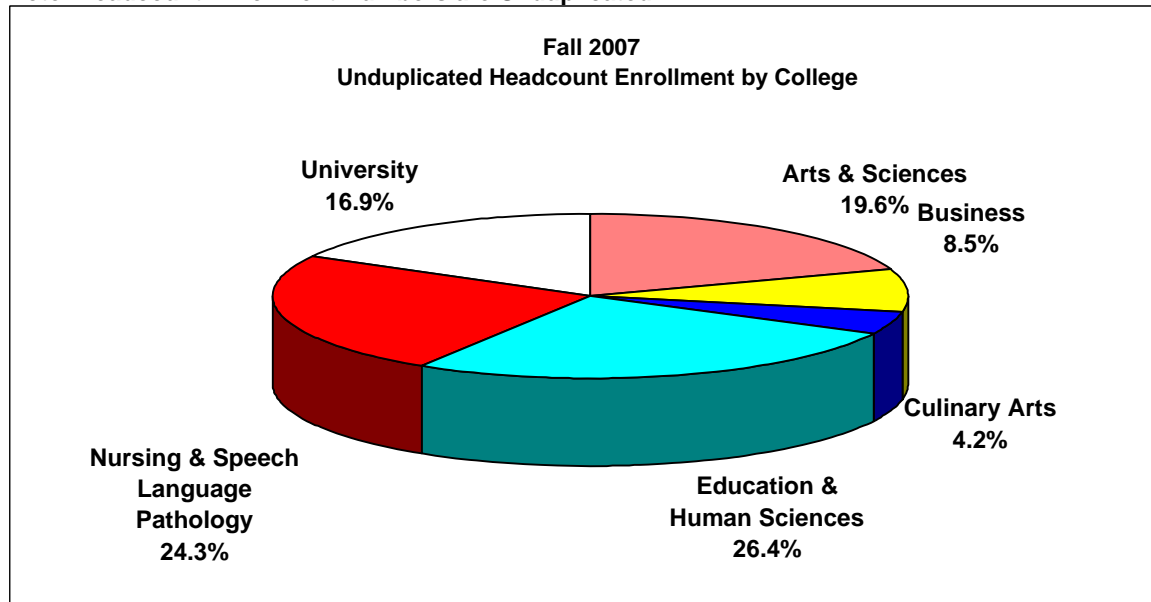
<i>University</i>	319	314	308	411	393	74	23.20%
Undeclared - Undergraduate	319	314	308	411	393	74	23.20%
<i>University Total</i>	2049	2231	2285	2428	2379	330	116.11%

## Table C:2 Unduplicated Headcount Enrollment by College

Fall 2005 - Fall 2007

College	Fall 2005		Fall 2006		Fall 2007	
	# Students	% of Total	# Students	% of Total	# Students	% of Total
<b>Arts &amp; Sciences</b>	482	21.09%	492	20.26%	467	19.63%
<b>Business</b>	214	9.37%	205	8.44%	202	8.49%
<b>Culinary Arts</b>	96	4.20%	108	4.45%	101	4.25%
<b>Education &amp; Human Sciences</b>	601	26.30%	629	25.91%	628	26.40%
<b>Nursing &amp; Speech Language Pathology</b>	583	25.51%	575	23.68%	579	24.34%
<b>University</b>	309	13.52%	419	17.26%	402	16.90%
<b>Total</b>	<b>2285</b>	<b>100%</b>	<b>2428</b>	<b>100%</b>	<b>2379</b>	<b>100%</b>

Note: Headcount Enrollment Numbers are Unduplicated





**Table C:3**  
**Class Type Enrollment**

	Fall 2001	Fall 2002	Fall 2003	Fall 2004	Fall 2005	Fall 2006	Fall 2007
<b>Day Classes</b>	2040	1848	1821	1962	2082	2150	2102
<b>Night Classes</b>	1040	1119	950	1055	1071	929	873
<b>Weekend Classes</b>	73	70	99	113	112	51	107
<b>On-line Classes</b>	66	57	160	223	290	332	412

**\*Students may be enrolled in more than one class type,  
but headcount is unduplicated within class type.**

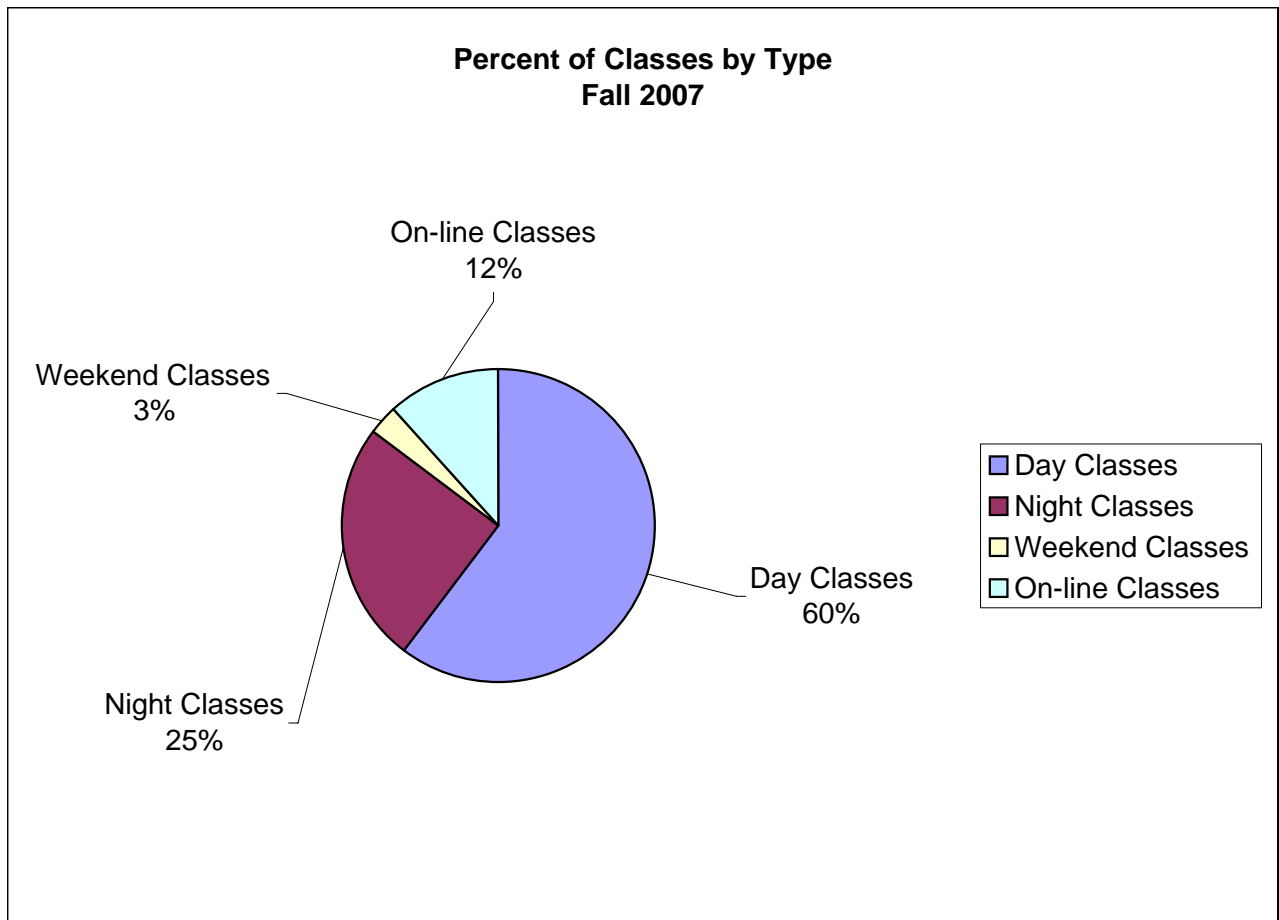


Table C:4 Credit Hour Generation by College & Department

Program	SU 04	FA 04	SP 05	04-05 Total	SU 05	FA 05	SP 06	05-06 Total
Art & Design	102	1233	1176	2511	12	1221	1095	2328
Communication	193	1019	958	2170	189	852	693	1734
History, Political Science, Geography, & Paralegal	501	2193	2385	5079	683	2481	2262	5426
Honors	353	115	107	575	392	142	138	672
Languages, Literature, & Philosophy	1094	3159	3074	7327	1018	3441	3369	7828
Music & Theatre	120	796	882	1798	56	803	806	1665
Science & Mathematics	842	4162	4166	9170	1085	4168	3763	9016
<b>Arts &amp; Sciences College Total</b>	<b>3205</b>	<b>12677</b>	<b>12748</b>	<b>28630</b>	<b>3435</b>	<b>13108</b>	<b>12126</b>	<b>28669</b>
Accounting & MIS	186	1107	1212	2505	306	1236	1239	2781
Business Administration	249	1089	1047	2385	201	1134	1206	2541
<b>Business College Total</b>	<b>435</b>	<b>2196</b>	<b>2259</b>	<b>4890</b>	<b>507</b>	<b>2370</b>	<b>2445</b>	<b>5322</b>
<b>Culinary Arts Total</b>	<b>151</b>	<b>728</b>	<b>709</b>	<b>1588</b>	<b>193</b>	<b>744</b>	<b>875</b>	<b>1812</b>
Education	618	2,457	2,547	5622	765	2514	2277	5556
Health & Kinesiology	141	1,198	1,155	2494	260	1300	1399	2959
Health Education	298	189	231	718	195	219	194	608
Psychology & Family Studies	618	2,413	2,675	5706	601	2511	2700	5812
<b>Education &amp; Human Sciences College Total</b>	<b>1675</b>	<b>6257</b>	<b>6608</b>	<b>14540</b>	<b>1821</b>	<b>6544</b>	<b>6570</b>	<b>14935</b>
Associate of Science in Nursing	102	1,115	1,082	2299	63	1039	1071	2173
Bachelor of Science in Nursing	847	2,166	1,796	4809	1020	2041	1917	4978
Master of Science in Nursing	305	484	540	1329	521	550	615	1686
Nursing	85	109	4	198	100	166	128	394
Speech/Language Pathology	115	667	538	1320	134	721	507	1362
<b>Nursing &amp; Speech/Language Pathology College Total</b>	<b>1454</b>	<b>4541</b>	<b>3960</b>	<b>9955</b>	<b>1838</b>	<b>4517</b>	<b>4238</b>	<b>10593</b>
University Classes	18	475	203	696	15	450	207	672
<b>Totals</b>	<b>6938</b>	<b>26874</b>	<b>26487</b>	<b>60,299</b>	<b>7809</b>	<b>27733</b>	<b>26461</b>	<b>62003</b>

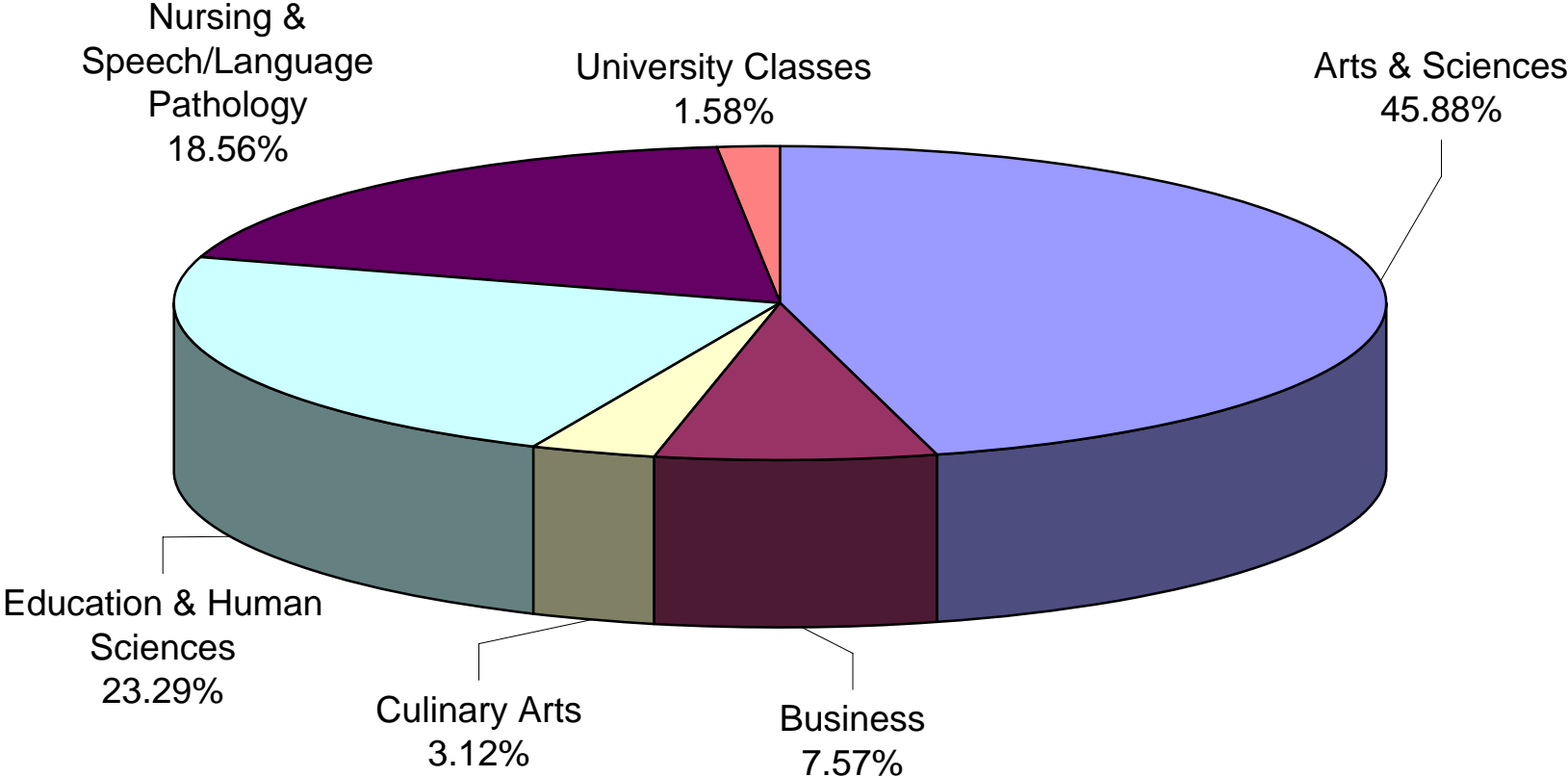
\*ROTC Classes are excluded

Table C:4 Credit Hour Generation by College & Department

Program	SU 06	FA 06	SP 07	06-07 Total	SU 07	FA 07
Art & Design	116	1215	1136	2467	102	1149
Communication	84	912	813	1809	75	774
History, Political Science, Geography, & Paralegal	420	2637	2310	5367	345	2085
Honors	327	143	131	601	370	140
Languages, Literature, & Philosophy	895	3506	3346	7747	722	3501
Music & Theatre	57	887	838	1782	65	753
Science & Mathematics	575	4517	4063	9155	726	4417
<b>Arts &amp; Sciences College Total</b>	<b>2474</b>	<b>13817</b>	<b>12637</b>	<b>28928</b>	<b>2405</b>	<b>12819</b>
Accounting & MIS	237	1380	1158	2775	249	1296
Business Administration	396	1041	1044	2481	345	819
<b>Business College Total</b>	<b>633</b>	<b>2421</b>	<b>2202</b>	<b>5256</b>	<b>594</b>	<b>2115</b>
<b>Culinary Arts Total</b>	<b>159</b>	<b>754</b>	<b>909</b>	<b>1822</b>	<b>135</b>	<b>872</b>
Education	804	2598	2490	5892	732	2529
Health & Kinesiology	281	1455	1349	3085	302	1291
Health Education	207	237	264	708	204	216
Psychology & Family Studies	438	2791	2607	5836	405	2470
<b>Education &amp; Human Sciences College Total</b>	<b>1730</b>	<b>7081</b>	<b>6710</b>	<b>15521</b>	<b>1643</b>	<b>6506</b>
Associate of Science in Nursing	116	1175	1020	2311	117	1074
Bachelor of Science in Nursing	708	2325	2075	5108	786	2238
Master of Science in Nursing	505	433	401	1339	437	457
Nursing	268	95	127	490	197	111
Speech/Language Pathology	49	621	515	1185	83	592
<b>Nursing &amp; Speech/Language Pathology College Total</b>	<b>1646</b>	<b>4649</b>	<b>4138</b>	<b>10433</b>	<b>1620</b>	<b>4472</b>
University Classes	12	412	154	578	18	442
<b>Totals</b>	<b>6654</b>	<b>29134</b>	<b>26750</b>	<b>62538</b>	<b>6415</b>	<b>27226</b>

\*ROTC Classes are excluded

**Table C:4a**  
**CREDIT HOUR GENERATION BY COLLEGE - Fall 2007**



**Table C5: University Grade Distribution By College and Department Fall 2007**

College	Department	UG/GR	A		B		C		D		F		Other								Other Total		Total
			#	%	#	%	#	%	#	%	#	%	AU	I	NA	NC	P	W	WF	WP	#	%	
Arts & Sciences	Communication	UG	101	37%	89	33%	38	14%	13	5%	18	7%	0	1	0	0	0	3	1	7	12	4%	271
	History, Political Science,	UG	167	23%	222	31%	146	20%	59	8%	89	12%	1	0	0	0	0	12	1	22	36	5%	719
	Languages, Literature and	UG	351	34%	288	28%	183	18%	53	5%	68	7%	5	2	0	53	0	12	4	20	96	9%	1039
	Music and Theatre	UG	227	62%	91	25%	21	6%	8	2%	11	3%	1	2	2	0	0	1	3	2	11	3%	369
	Science and Mathematics	UG	353	22%	372	23%	323	20%	164	10%	229	14%	1	0	0	7	62	24	8	72	174	11%	1615
	Art and Design	UG	196	51%	100	26%	40	10%	14	4%	23	6%	3	4	0	0	0	2	1	4	14	4%	387
	<b>Total</b>			<b>1395</b>	<b>32%</b>	<b>1162</b>	<b>26%</b>	<b>751</b>	<b>17%</b>	<b>311</b>	<b>7%</b>	<b>438</b>	<b>10%</b>	<b>11</b>	<b>9</b>	<b>2</b>	<b>60</b>	<b>62</b>	<b>54</b>	<b>18</b>	<b>127</b>	<b>343</b>	<b>8%</b>
Business	Accounting and MIS	UG	159	35%	126	28%	70	16%	24	5%	45	10%	0	1	0	0	0	7	2	17	27	6%	451
	Business Administration	UG	104	37%	80	28%	50	18%	15	5%	20	7%	0	2	0	0	0	2	8	3	15	5%	284
	<b>Total</b>		<b>263</b>	<b>36%</b>	<b>206</b>	<b>28%</b>	<b>120</b>	<b>16%</b>	<b>39</b>	<b>5%</b>	<b>65</b>	<b>9%</b>	<b>0</b>	<b>3</b>	<b>0</b>	<b>0</b>	<b>0</b>	<b>9</b>	<b>10</b>	<b>20</b>	<b>42</b>	<b>6%</b>	<b>735</b>
Culinary Arts	Culinary Arts Institute	UG	104	32%	76	23%	36	11%	4	1%	21	6%	5	0	0	0	67	5	4	7	88	27%	329
	<b>Total</b>		<b>104</b>	<b>32%</b>	<b>76</b>	<b>23%</b>	<b>36</b>	<b>11%</b>	<b>4</b>	<b>1%</b>	<b>21</b>	<b>6%</b>	<b>5</b>	<b>0</b>	<b>0</b>	<b>0</b>	<b>67</b>	<b>5</b>	<b>4</b>	<b>7</b>	<b>88</b>	<b>27%</b>	<b>329</b>

\* excludes MSMS sections and ROTC courses

College	Department	UG/GR	A		B		C		D		F		Other						Other Total		Total		
			#	%	#	%	#	%	#	%	#	%	AU	I	NA	NC	P	W	WF	WP		#	%
Education & Human Sciences	Education	GR	68	84%	9	11%	0	0%	0	0%	0	0%	0	1	0	0	0	2	0	1	4	5%	81
	Health and Kinesiology	UG	553	69%	107	13%	42	5%	13	2%	33	4%	10	1	3	0	0	9	12	18	53	7%	801
	Health Education	GR	46	67%	14	20%	2	3%	0	0%	0	0%	0	1	0	0	0	2	0	4	7	10%	69
	Psychology and Family Studies	UG	249	28%	244	28%	184	21%	81	9%	82	9%	0	1	0	0	0	8	10	16	35	4%	875
	Education	UG	503	67%	128	17%	47	6%	14	2%	34	5%	0	5	0	2	0	6	3	8	24	3%	750
	<b>Total</b>			<b>1419</b>	<b>55%</b>	<b>502</b>	<b>19%</b>	<b>275</b>	<b>11%</b>	<b>108</b>	<b>4%</b>	<b>149</b>	<b>6%</b>	<b>10</b>	<b>9</b>	<b>3</b>	<b>2</b>	<b>0</b>	<b>27</b>	<b>25</b>	<b>47</b>	<b>123</b>	<b>5%</b>
Nursing & Speech Language Pathology	Associate Nursing	UG	176	42%	94	23%	108	26%	25	6%	5	1%	2	0	0	0	0	7	0	0	9	2%	417
	Baccalaureate Nursing	UG	195	29%	182	27%	111	17%	3	0%	5	1%	0	0	0	0	168	0	3	1	172	26%	668
	Graduate Nursing	GR	108	76%	21	15%	5	4%	0	0%	0	0%	0	5	0	0	0	0	0	3	8	6%	142
	Speech-Language Pathology	UG	46	34%	55	41%	13	10%	7	5%	5	4%	1	0	0	0	0	0	0	7	8	6%	134
		GR	37	51%	30	41%	0	0%	0	0%	0	0%	0	2	0	0	0	4	0	0	6	8%	73
<b>Total</b>			<b>562</b>	<b>39%</b>	<b>382</b>	<b>27%</b>	<b>237</b>	<b>17%</b>	<b>35</b>	<b>2%</b>	<b>15</b>	<b>1%</b>	<b>3</b>	<b>7</b>	<b>0</b>	<b>0</b>	<b>168</b>	<b>11</b>	<b>3</b>	<b>11</b>	<b>203</b>	<b>14%</b>	<b>1434</b>
University	University Classes	UG	204	58%	48	14%	17	5%	5	1%	28	8%	0	0	0	0	40	5	2	2	49	14%	351
<b>Total</b>			<b>204</b>	<b>58%</b>	<b>48</b>	<b>14%</b>	<b>17</b>	<b>5%</b>	<b>5</b>	<b>1%</b>	<b>28</b>	<b>8%</b>	<b>0</b>	<b>0</b>	<b>0</b>	<b>0</b>	<b>40</b>	<b>5</b>	<b>2</b>	<b>2</b>	<b>49</b>	<b>14%</b>	<b>351</b>
<b>Total</b>			<b>3947</b>	<b>40%</b>	<b>2376</b>	<b>24%</b>	<b>1436</b>	<b>15%</b>	<b>502</b>	<b>5%</b>	<b>716</b>	<b>7%</b>	<b>29</b>	<b>28</b>	<b>5</b>	<b>62</b>	<b>337</b>	<b>111</b>	<b>62</b>	<b>214</b>	<b>848</b>	<b>9%</b>	<b>9825</b>

\* excludes MSMS sections and ROTC courses

**Table C6: Undergraduate Grade Distribution By College and Department Fall 2007**

College	Department	UG/GR	A		B		C		D		F		Other								Other Total		Total
			#	%	#	%	#	%	#	%	#	%	AU	I	NA	NC	P	W	WF	WP	#	%	
Arts & Sciences	Communication	UG	101	37%	89	33%	38	14%	13	5%	18	7%	0	1	0	0	0	3	1	7	12	4%	271
	History, Political Science,	UG	167	23%	222	31%	146	20%	59	8%	89	12%	1	0	0	0	0	12	1	22	36	5%	719
	Languages, Literature and	UG	351	34%	288	28%	183	18%	53	5%	68	7%	5	2	0	53	0	12	4	20	96	9%	1039
	Music and Theatre	UG	227	62%	91	25%	21	6%	8	2%	11	3%	1	2	2	0	0	1	3	2	11	3%	369
	Science and Mathematics	UG	353	22%	372	23%	323	20%	164	10%	229	14%	1	0	0	7	62	24	8	72	174	11%	1615
	Art and Design	UG	196	51%	100	26%	40	10%	14	4%	23	6%	3	4	0	0	0	2	1	4	14	4%	387
	<b>Total</b>			<b>1395</b>	<b>32%</b>	<b>1162</b>	<b>26%</b>	<b>751</b>	<b>17%</b>	<b>311</b>	<b>7%</b>	<b>438</b>	<b>10%</b>	<b>11</b>	<b>9</b>	<b>2</b>	<b>60</b>	<b>62</b>	<b>54</b>	<b>18</b>	<b>127</b>	<b>343</b>	<b>8%</b>
Business	Business Administration	UG	104	37%	80	28%	50	18%	15	5%	20	7%	0	2	0	0	0	2	8	3	15	5%	284
	Accounting and MIS	UG	159	35%	126	28%	70	16%	24	5%	45	10%	0	1	0	0	0	7	2	17	27	6%	451
	<b>Total</b>		<b>263</b>	<b>36%</b>	<b>206</b>	<b>28%</b>	<b>120</b>	<b>16%</b>	<b>39</b>	<b>5%</b>	<b>65</b>	<b>9%</b>	<b>0</b>	<b>3</b>	<b>0</b>	<b>0</b>	<b>0</b>	<b>9</b>	<b>10</b>	<b>20</b>	<b>42</b>	<b>6%</b>	<b>735</b>
Culinary Arts	Culinary Arts Institute	UG	104	32%	76	23%	36	11%	4	1%	21	6%	5	0	0	0	67	5	4	7	88	27%	329
	<b>Total</b>		<b>104</b>	<b>32%</b>	<b>76</b>	<b>23%</b>	<b>36</b>	<b>11%</b>	<b>4</b>	<b>1%</b>	<b>21</b>	<b>6%</b>	<b>5</b>	<b>0</b>	<b>0</b>	<b>0</b>	<b>67</b>	<b>5</b>	<b>4</b>	<b>7</b>	<b>88</b>	<b>27%</b>	<b>329</b>

\* excludes MSMS sections and ROTC courses

College	Department	UG/GR	A		B		C		D		F		Other							Other Total		Total	
			#	%	#	%	#	%	#	%	#	%	AU	I	NA	NC	P	W	WF	WP	#		%
Education & Human Sciences	Education	UG	503	67%	128	17%	47	6%	14	2%	34	5%	0	5	0	2	0	6	3	8	24	3%	750
	Health and Kinesiology	UG	553	69%	107	13%	42	5%	13	2%	33	4%	10	1	3	0	0	9	12	18	53	7%	801
	Psychology and Family Studies	UG	249	28%	244	28%	184	21%	81	9%	82	9%	0	1	0	0	0	8	10	16	35	4%	875
	<b>Total</b>		<b>1305</b>	<b>54%</b>	<b>479</b>	<b>20%</b>	<b>273</b>	<b>11%</b>	<b>108</b>	<b>4%</b>	<b>149</b>	<b>6%</b>	<b>10</b>	<b>7</b>	<b>3</b>	<b>2</b>	<b>0</b>	<b>23</b>	<b>25</b>	<b>42</b>	<b>112</b>	<b>5%</b>	<b>2426</b>
Nursing & Speech Language Pathology	Associate Nursing	UG	176	42%	94	23%	108	26%	25	6%	5	1%	2	0	0	0	0	7	0	0	9	2%	417
	Baccalaureate Nursing	UG	195	29%	182	27%	111	17%	3	0%	5	1%	0	0	0	0	168	0	3	1	172	26%	668
	Speech-Language Pathology	UG	46	34%	55	41%	13	10%	7	5%	5	4%	1	0	0	0	0	0	7	8	6%	134	
	<b>Total</b>		<b>417</b>	<b>34%</b>	<b>331</b>	<b>27%</b>	<b>232</b>	<b>19%</b>	<b>35</b>	<b>3%</b>	<b>15</b>	<b>1%</b>	<b>3</b>	<b>0</b>	<b>0</b>	<b>0</b>	<b>168</b>	<b>7</b>	<b>3</b>	<b>8</b>	<b>189</b>	<b>16%</b>	<b>1219</b>
University	University Classes	UG	204	58%	48	14%	17	5%	5	1%	28	8%	0	0	0	0	40	5	2	2	49	14%	351
	<b>Total</b>		<b>204</b>	<b>58%</b>	<b>48</b>	<b>14%</b>	<b>17</b>	<b>5%</b>	<b>5</b>	<b>1%</b>	<b>28</b>	<b>8%</b>	<b>0</b>	<b>0</b>	<b>0</b>	<b>0</b>	<b>40</b>	<b>5</b>	<b>2</b>	<b>2</b>	<b>49</b>	<b>14%</b>	<b>351</b>
<b>Total</b>			<b>3688</b>	<b>39%</b>	<b>2302</b>	<b>24%</b>	<b>1429</b>	<b>15%</b>	<b>502</b>	<b>5%</b>	<b>716</b>	<b>8%</b>	<b>29</b>	<b>19</b>	<b>5</b>	<b>62</b>	<b>337</b>	<b>103</b>	<b>62</b>	<b>206</b>	<b>823</b>	<b>9%</b>	<b>9460</b>

\* excludes MSMS sections and ROTC courses



**Table C7: Graduate Grade Distribution By College and Department Fall 2007**

College	Department	UG/GR	A		B		C		D		F		Other								Other Total		Total
			#	%	#	%	#	%	#	%	#	%	AU	I	NA	NC	P	W	WF	WP	#	%	
Education & Human Sciences	Health Education	GR	46	67%	14	20%	2	3%	0	0%	0	0%	0	1	0	0	0	2	0	4	7	10%	69
	Education	GR	68	84%	9	11%	0	0%	0	0%	0	0%	0	1	0	0	0	2	0	1	4	5%	81
	<b>Total</b>		<b>114</b>	<b>76%</b>	<b>23</b>	<b>15%</b>	<b>2</b>	<b>1%</b>	<b>0</b>	<b>0%</b>	<b>0</b>	<b>0%</b>	<b>0</b>	<b>2</b>	<b>0</b>	<b>0</b>	<b>0</b>	<b>4</b>	<b>0</b>	<b>5</b>	<b>11</b>	<b>7%</b>	<b>150</b>
Nursing & Speech Language Pathology	Speech-Language Pathology	GR	37	51%	30	41%	0	0%	0	0%	0	0%	0	2	0	0	0	4	0	0	6	8%	73
	Graduate Nursing	GR	108	76%	21	15%	5	4%	0	0%	0	0%	0	5	0	0	0	0	0	3	8	6%	142
	<b>Total</b>		<b>145</b>	<b>67%</b>	<b>51</b>	<b>24%</b>	<b>5</b>	<b>2%</b>	<b>0</b>	<b>0%</b>	<b>0</b>	<b>0%</b>	<b>0</b>	<b>7</b>	<b>0</b>	<b>0</b>	<b>0</b>	<b>4</b>	<b>0</b>	<b>3</b>	<b>14</b>	<b>7%</b>	<b>215</b>
<b>Total</b>			<b>259</b>	<b>71%</b>	<b>74</b>	<b>20%</b>	<b>7</b>	<b>2%</b>	<b>0</b>	<b>0%</b>	<b>0</b>	<b>0%</b>	<b>0</b>	<b>9</b>	<b>0</b>	<b>0</b>	<b>0</b>	<b>8</b>	<b>0</b>	<b>8</b>	<b>25</b>	<b>7%</b>	<b>365</b>

**Table C:8 Degrees Granted by Major, Ethnicity and Gender, Academic Year 2007**

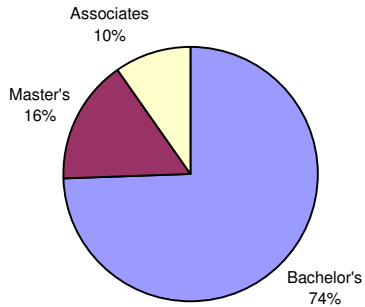
			White		Black		Hispanic		Non-resident Alien	American Indian/Alaskan Native	Asian or Pacific Islander	Total
Major	CIP	Men	Women	Men	Women	Men	Women	Women	Women	Women		
Arts & Sciences	Art Education	131302	0	2	0	0	0	0	0	0	1	3
	Biology	260101	2	5	0	1	0	0	1	0	0	9
	Communication	090101	5	5	0	3	0	0	1	0	0	14
	English	230101	3	12	0	1	0	0	0	0	0	16
	History	540101	1	2	0	0	0	0	0	0	0	3
	Mathematics	270101	1	5	0	0	1	0	0	0	0	7
	Microbiology	260503	0	2	0	1	0	0	0	0	0	3
	Music Education	131312	1	0	0	0	0	0	0	0	0	1
	Music Therapy	512305	0	1	0	0	0	0	0	0	0	1
	Music, General	500901	0	1	0	0	0	0	0	0	0	1
	Paralegal Studies	220302	2	9	0	3	0	0	0	0	0	14
	Political Science	451001	0	2	0	0	0	0	0	0	0	2
	Social Sciences	450101	3	7	0	3	0	0	0	1	1	15
	Spanish	160905	0	1	0	1	0	0	0	0	0	2
Visual and Performing Arts	500101	1	12	0	1	0	0	0	0	0	14	
Arts & Sciences Total			19	66	0	14	1	0	2	1	2	105
Business	Accounting	520301	0	10	0	5	0	0	2	0	1	18
	Business Administration & Mgt., General	520201	4	9	1	7	0	0	0	0	0	21
Business Total			4	19	1	12	0	0	2	0	1	39
Culinary Arts	Culinary Arts	120599	3	9	3	0	0	0	0	0	1	16
Culinary Arts Total			3	9	3	0	0	0	0	0	1	16

**Table C:8 Degrees Granted by Major, Ethnicity and Gender, Academic Year 2007**

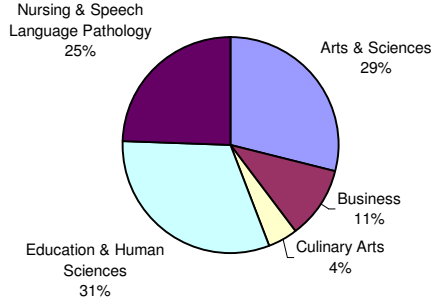
			White		Black		Hispanic		Non-resident Alien	American Indian/Alaskan Native	Asian or Pacific Islander	Total
Major	CIP	Men	Women	Men	Women	Men	Women	Women	Women	Women		
Education & Human Sciences	Educ. of the Gifted & Talented - Master's	131004	0	5	0	0	0	0	0	0	0	5
	Elementary Education	131202	0	39	1	22	0	0	0	0	0	62
	Family Studies	190704	1	6	0	17	0	1	0	0	0	25
	Health & Physical Education, General	310501	0	4	0	4	0	0	0	0	0	8
	Health Education - Master's	131307	1	6	0	6	0	0	0	0	3	16
	Psychology	420101	1	11	0	7	0	0	0	0	0	19
	Reading/Literacy Education - Master's	131315	0	5	0	3	0	0	0	0	0	8
	Secondary Teacher Education - Master's	131205	1	2	0	2	0	0	0	0	0	5
Education & Human Sciences Total			4	78	1	61	0	1	0	0	3	148
Nursing & Speech Language Pathology	Nursing (RN Training) - ASN	511601	4	31	1	11	0	0	0	0	0	47
	Nursing (RN Training) - BSN	511601	5	63	0	5	0	0	1	0	0	74
	Nursing (RN Training) - MSN	511601	3	24	2	7	0	0	0	0	0	36
	Speech/Language Pathology - Bachelor's	510203	0	15	0	0	0	0	0	0	0	15
	Speech/Language Pathology - Master's	510203	0	7	0	0	0	0	0	0	1	8
Nursing & Speech Language Pathology Total			12	140	3	23	0	0	1	0	1	180
Total			42	312	8	110	1	1	5	1	8	488

**Table C:8a Degrees Awarded Academic Year 2007**

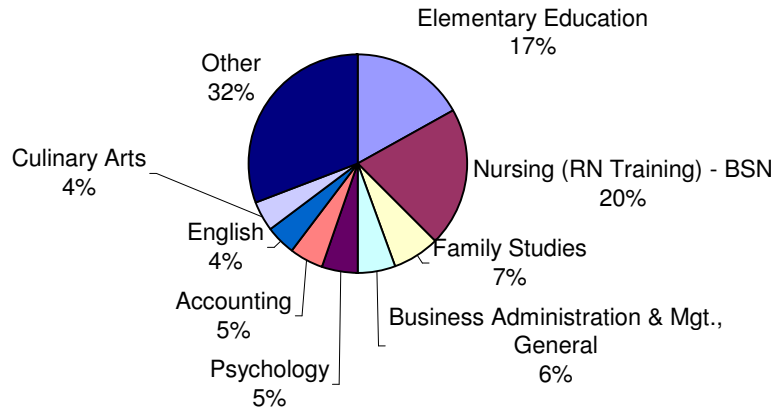
**Degrees Granted Academic Year 2007**



**Bachelor's Degrees Granted Academic Year 2007**



**Most Popular Bachelor's Degrees Academic Year 2007**



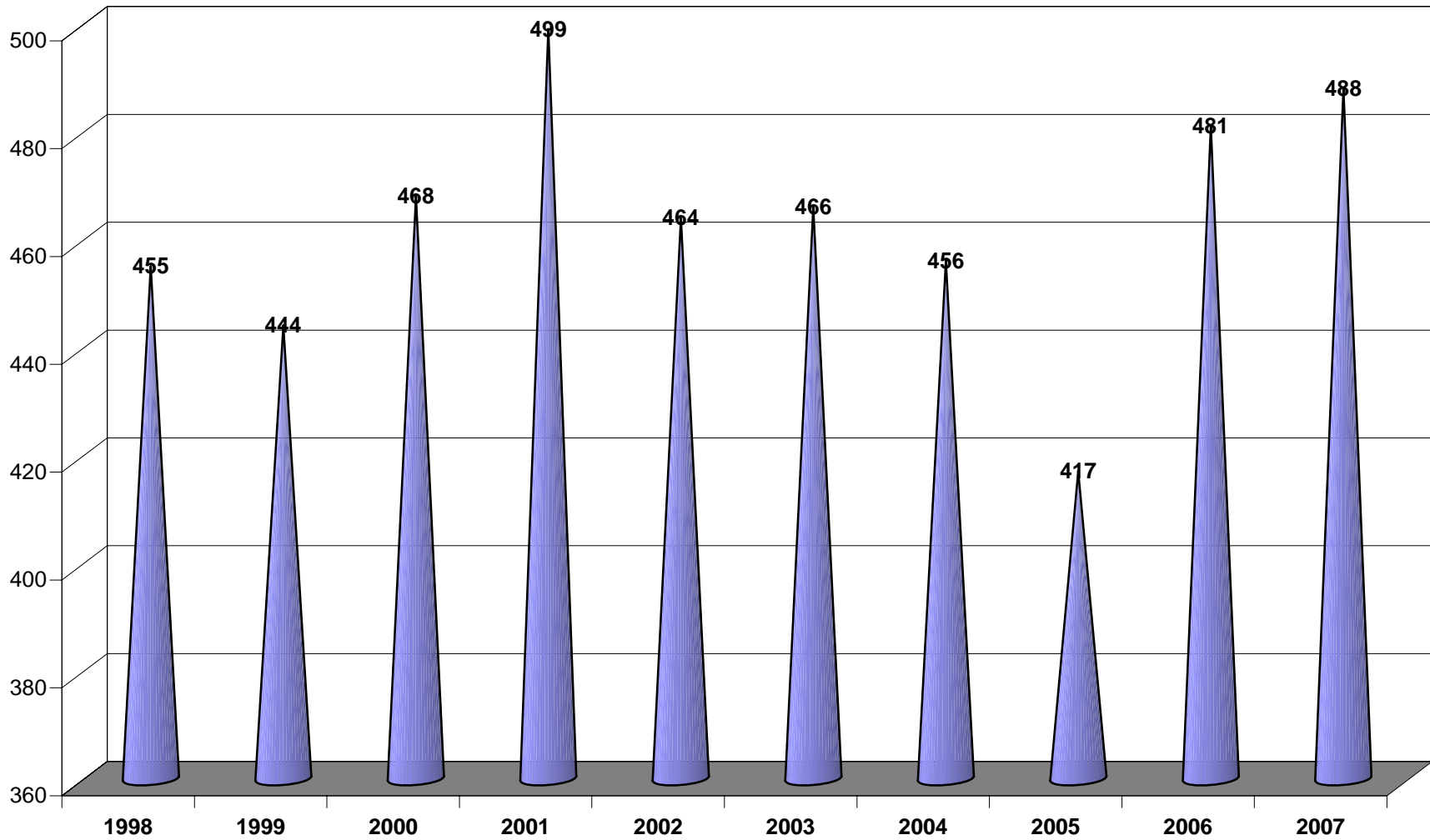
**Table C:9 History of Degrees Granted by Major and Gender**

			2003		2004		2005		2006		2007		Total
Major	CIP	Men	Women	Men	Women	Men	Women	Men	Women	Men	Women		
Arts & Sciences	Art Teacher Education	131302	0	0	2	2	1	4	0	2	0	3	14
	Biology, General	260101	0	11	0	8	0	4	1	7	2	7	40
	Chemistry, General	400501	0	1	1	0	1	2	0	1	0	0	6
	Clothing/Apparel & Textile Studies	190901	0	1	0	0	0	0	0	0	0	0	1
	Communication, General	090101	2	10	2	13	3	15	2	11	5	9	72
	Elementary Teacher Education	131202	0	1	0	0	0	0	0	0	0	0	1
	English Language & Literature, General	230101	1	14	2	21	1	10	3	10	3	13	78
	History, General	450801	0	1	0	0	0	0	0	0	0	0	1
		540101	0	0	1	1	5	0	0	6	1	2	16
	Mathematics	270101	0	1	1	5	1	3	0	0	2	5	18
	Microbiology/Bacteriology	260501	1	5	0	0	0	0	0	0	0	0	6
		260503	0	0	1	2	2	3	0	5	0	3	16
	Music Teacher Education	131312	0	0	1	2	0	1	0	2	1	0	7
	Music Therapy	512305	0	0	0	0	0	1	0	2	0	1	4
	Music, General	500901	0	0	3	2	5	1	1	2	0	1	15
	Paralegal/Legal Assistant	220103	2	10	0	13	2	9	0	0	0	0	36
		220302	0	0	0	0	0	0	1	15	2	12	30
	Physical Science, General	400101	0	0	0	2	0	1	0	0	0	0	3
	Political Science, General	451001	0	2	1	1	1	1	0	7	0	2	15
	Social Sciences, General	450101	2	8	3	3	0	8	2	11	3	12	52
Spanish Language & Literature	160905	0	1	0	1	0	2	0	0	0	2	6	
Visual & Performing Arts	500101	3	18	6	11	1	11	5	17	1	13	86	
Arts & Sciences Total			11	84	24	87	23	76	15	98	20	85	523
Business	Accounting	520301	1	11	5	13	2	10	3	17	0	18	80
	Business Administration & Mgt., General	520201	14	28	5	19	8	30	7	18	5	16	150
Business Total			15	39	10	32	10	40	10	35	5	34	230

**Table C:9 History of Degrees Granted by Major and Gender**

			2003		2004		2005		2006		2007		Total
Major	CIP		Men	Women	Men	Women	Men	Women	Men	Women	Men	Women	
Culinary Arts		120599	1	15	2	7	2	9	2	6	6	10	60
Culinary Arts Total			1	15	2	7	2	9	2	6	6	10	60
Education & Human Sciences	Curriculum & Instruction - Master's	130301	0	9	0	5	0	8	1	2	0	0	25
	Educ. of the Gifted & Talented - Master's	131004	0	6	0	8	1	2	0	3	0	5	25
	Elementary Teacher Education	131202	1	52	1	52	0	42	4	42	1	61	256
	Family Life & Relations Studies	190704	1	25	0	31	0	22	0	21	1	24	125
	Health & Physical Education, General	310501	4	12	1	7	4	5	2	7	0	8	50
	Health Teacher Education - Master's	131307	1	5	0	3	0	7	2	8	1	15	42
	Psychology, General	420101	1	22	2	18	0	18	3	24	1	18	107
	Reading Literacy Education - Master's	131315	0	0	1	4	0	3	0	14	0	8	30
	Secondary Teacher Education - Master's	131205	0	1	0	4	0	8	0	2	1	4	20
Education & Human Sciences Total			8	132	5	132	5	115	12	123	5	143	680
Nursing & Speech Language Pathology	Nursing (RN Training) - ASN	511601	1	39	2	51	4	34	4	41	5	42	223
	Nursing (RN Training) - BSN	511601	7	66	3	55	4	49	4	71	5	69	333
	Nursing (RN Training) - MSN	511601	1	22	2	24	1	26	3	32	5	31	147
	Speech-Language Pathology - Bachelor's	510203	1	8	0	13	0	11	0	11	0	15	59
	Speech-Language Pathology - Master's	510203	0	16	0	7	0	8	0	14	0	8	53
Nursing & Speech Language Pathology Total			10	151	7	150	9	128	11	169	15	165	815
Total			45	421	48	408	49	368	50	431	51	437	2308

**Table C:9a**  
**Degrees Granted AY 1997-2007**

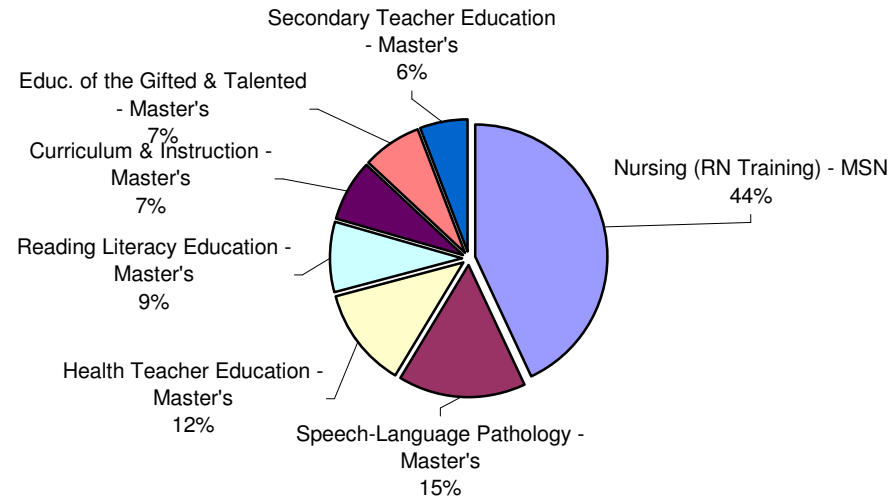


**Table C:9b Top Bachelor's and Master's Degrees Awarded in Last 5 Years**  
**Academic Years 2003 - 2007**

**Top 10 Bachelor's Degrees Awarded in Last 5 Years**

1	Nursing (RN Training) - BSN	333	19%
2	Elementary Teacher Education	257	15%
3	Business Administration & Mgt., General	150	9%
4	Family Life & Relations Studies	125	7%
5	Psychology, General	107	6%
6	Visual & Performing Arts	86	5%
7	Accounting	80	5%
8	English Language & Literature, General	78	4%
9	Communication, General	72	4%
10	Paralegal/Legal Assistant	66	4%

**Master's Degrees Awarded Last 5 Years**





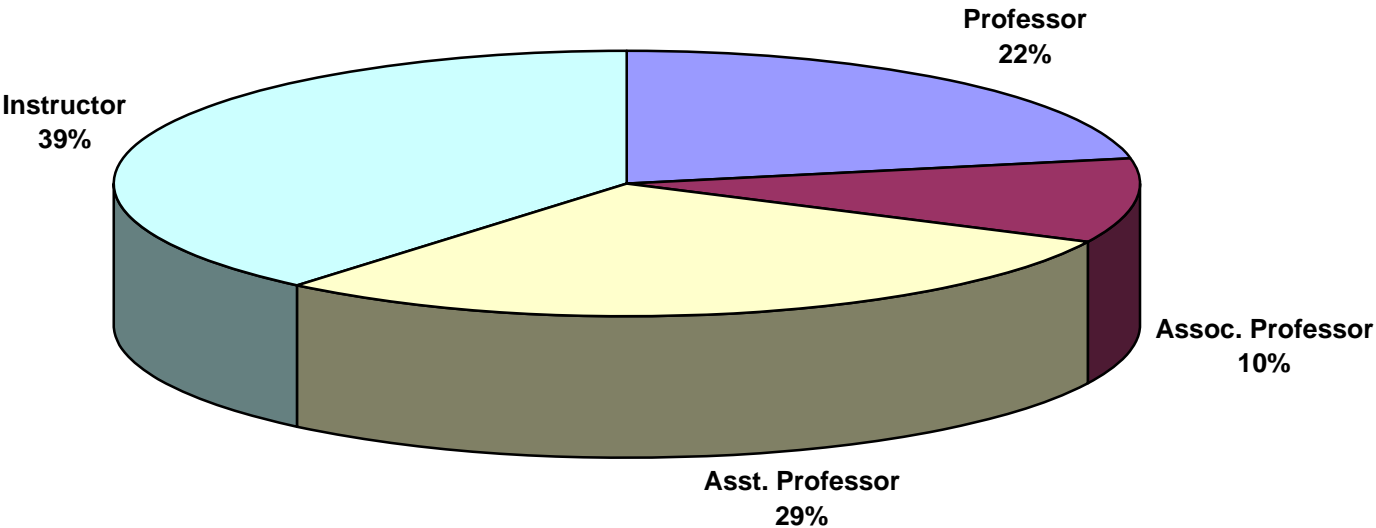
**TABLE D:1 Faculty Profile**

Fall Sem.	Number				Full-time Faculty by Rank				Full-time Faculty by Degree				F-T Fac by Sex		F-T Fac by Race			F-T Fac Contract	
	Ft-Time	Admin.	Pt-Time	Total	Prof.	Asso.	Asst.	Inst.	Terminal	SPEC.	MSTR.	BACH.	Male	Female	Black	White	Other	ACAD	FISCAL
<b>1998</b>	129	4	77	210	26	21	58	24	88	0	40	1	47	82	1	123	5	104	25
<b>1999</b>	132	4	80	216	28	22	55	27	92	0	40	0	52	80	2	128	2	105	27
<b>2000</b>	139	4	81	224	31	29	53	26	99	0	40	0	54	85	3	132	4	117	22
<b>2001</b>	134	4	80	218	31	27	44	32	93	0	40	1	53	81	6	123	5	103	31
<b>2002</b>	129	4	79	212	32	28	40	29	89	0	40	0	49	80	7	118	4	99	30
<b>2003</b>	131	5	61	197	33	23	36	39	85	0	46	0	48	83	5	123	3	104	27
<b>2004</b>	133	5	46	184	33	21	35	44	80	0	53	0	50	83	4	125	4	106	27
<b>2005</b>	136	5	66	207	35	21	34	46	81	0	53	2	50	86	4	127	5	110	26
<b>2006</b>	132	9	66	207	30	16	35	51	74	0	56	2	49	83	6	122	4	106	26
<b>2007</b>	136	9	74	219	30	14	39	53	78	0	56	2	49	87	6	121	9	109	27

**SOURCE: Office of Academic Affairs**

**\*The number of administrators with faculty status increased in Fall 2006 due to the EEOC re-classification of four deans and two other administrators.**

**Table D:1a**  
**Full-time Faculty Rank Profile**  
**Fall 2007**



**Total number of full-time faculty = 136**

**Table D:2 Faculty Credit Hour Production by Course Level**

<b>Fall 2006 Faculty Terminal Degrees and Student Credit Hours</b>				
	<b>Lower CH</b>	<b>Upper CH</b>	<b>Graduate CH</b>	<b>Total CH</b>
<b>Terminal Degrees</b>	8,899	6,687	656	16,242
<b>Non-Terminal Degrees</b>	7,519	4,861	512	12,892
<b>TOTAL</b>	<b>16,418</b>	<b>11,548</b>	<b>1,168</b>	<b>29,134</b>

<b>Fall 2007 Faculty Terminal Degrees and Student Credit Hours</b>				
	<b>Lower CH</b>	<b>Upper CH</b>	<b>Graduate CH</b>	<b>Total CH</b>
<b>Terminal Degrees</b>	8,375	6,512	647	15,534
<b>Non-Terminal Degrees</b>	7,190	4,040	462	11,692
<b>TOTAL</b>	<b>15,565</b>	<b>10,552</b>	<b>1,109</b>	<b>27,226</b>

<b>Fall 2006 Faculty Full-time/Part-time Status and Student Credit Hours</b>				
	<b>Lower CH</b>	<b>Upper CH</b>	<b>Graduate CH</b>	<b>Total CH</b>
<b>Full-time Faculty</b>	12,098	10,539	1,063	23,700
<b>Part-time Faculty</b>	4,320	1,009	105	5,434
<b>TOTAL</b>	<b>16,418</b>	<b>11,548</b>	<b>1,168</b>	<b>29,134</b>

<b>Fall 2007 Faculty Full-time/Part-time Status and Student Credit Hours</b>				
	<b>Lower CH</b>	<b>Upper CH</b>	<b>Graduate CH</b>	<b>Total CH</b>
<b>Full-time Faculty</b>	12,001	9,444	1,007	22,452
<b>Part-time Faculty</b>	3,564	1,108	102	4,774
<b>TOTAL</b>	<b>15,565</b>	<b>10,552</b>	<b>1,109</b>	<b>27,226</b>

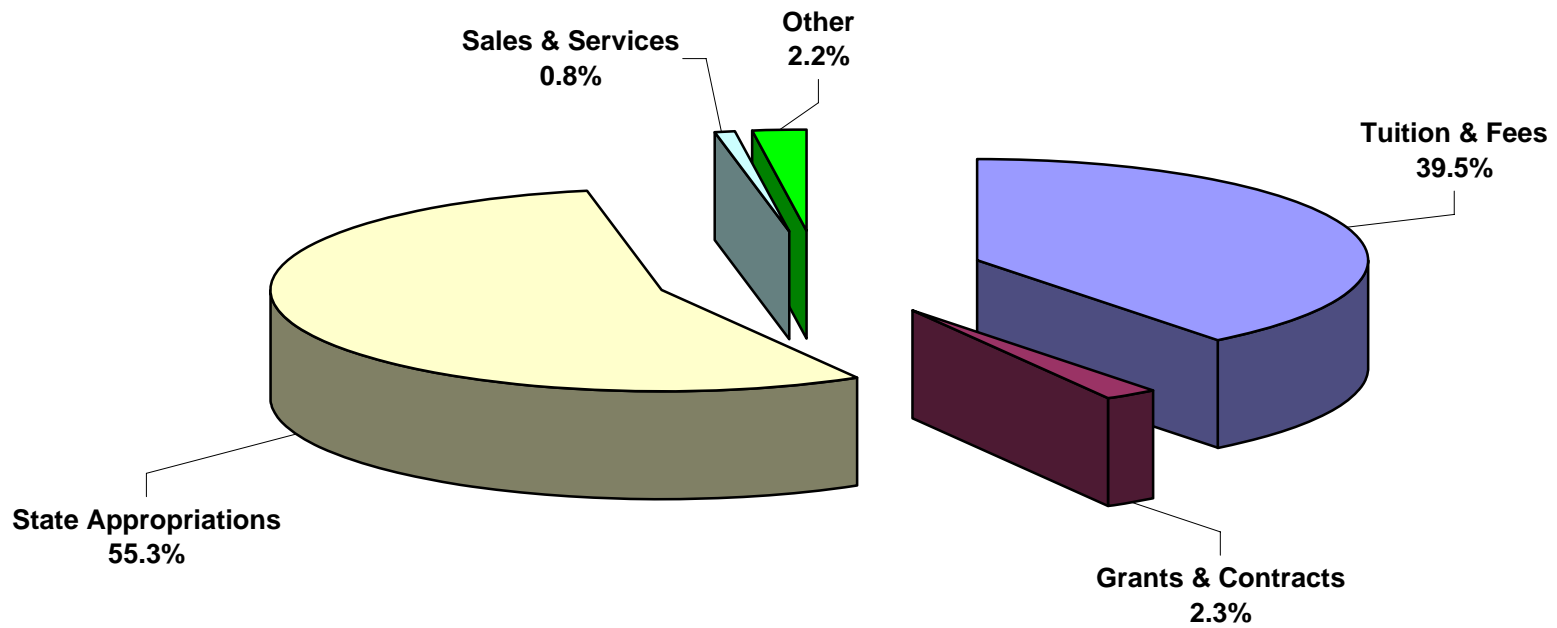
**Note:** For this profile, both Full-time and Part-time faculty are included.

**Table E:1 Summary of Budgeted E&G Revenues and Expenditures**

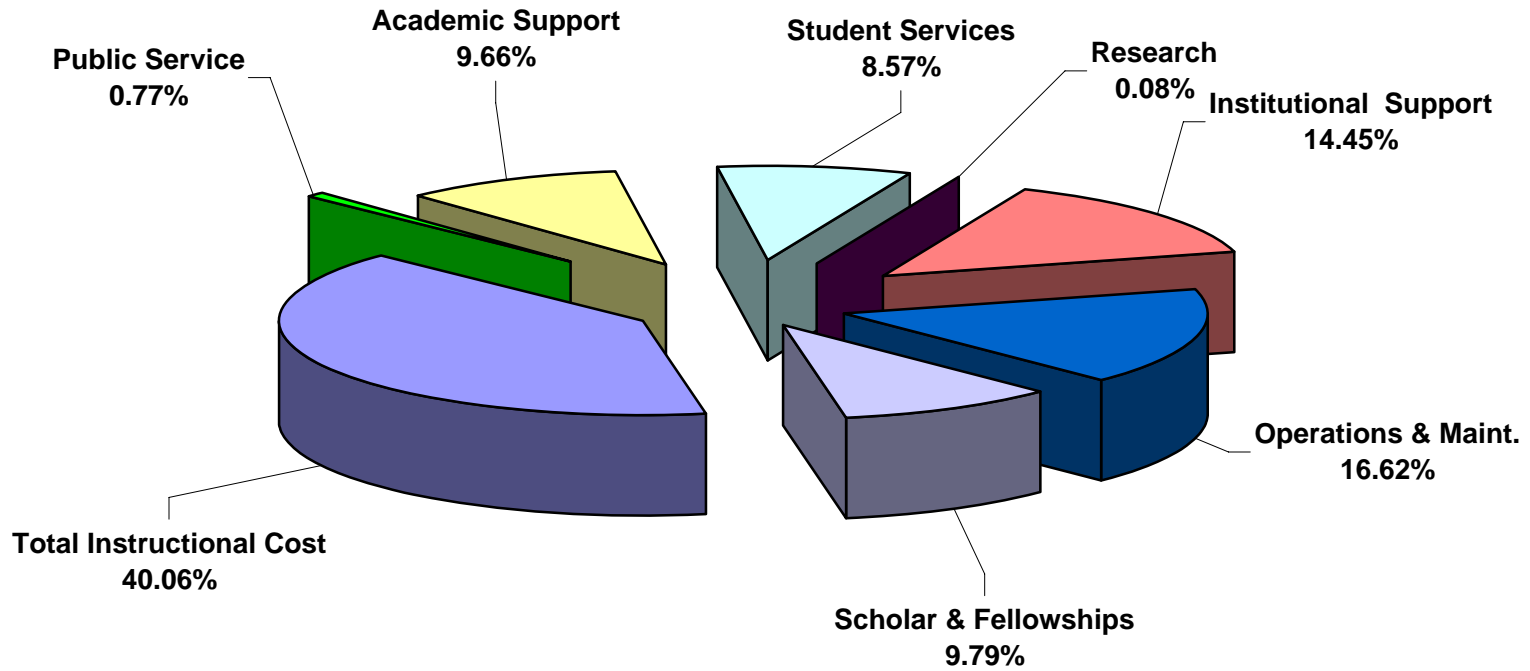
	2007-08		2006-07	
<b>CURRENT FUND REVENUE</b>				
Tuition and Fees	\$ 11,379,185	39.47%	\$ 10,326,731	38.94%
<b>State Govt. Appropriations</b>				
General Support	\$ 13,423,138	46.55%	\$ 12,018,399	45.32%
Interest Funds	\$ 9,389	0.03%	\$ 9,389	0.04%
MS Gov. School	\$ 157,500	0.55%	\$ 157,500	0.59%
Education Enhancement Fund	\$ 2,342,258	8.12%	\$ 2,454,993	9.26%
Contingency Funds	\$ -	0.00%	\$ 33,990	0.13%
<b>Sub-Total</b>	\$ 15,932,285	55.26%	\$ 14,674,271	55.34%
<b>Local Govt. Appropriations</b>	\$ -	0.00%	\$ -	0.00%
<b>Total Govt. Appropriations</b>	\$ 15,932,285	55.26%	\$ 14,674,271	55.34%
<b>Grants and Contracts</b>				
Federal Grants and Contracts	\$ 55,000	0.19%	\$ 50,000	0.19%
State Grants and Contracts	\$ 397,939	1.38%	\$ 230,944	0.87%
Other	\$ 211,776	0.73%	\$ 272,583	1.03%
<b>Sub-Total</b>	\$ 664,715	2.31%	\$ 553,527	2.09%
<b>Sales and Services</b>	\$ 231,093	0.80%	\$ 240,093	0.91%
<b>Other</b>	\$ 626,096	2.17%	\$ 722,691	2.73%
<b>TOTAL CURRENT REVENUE</b>	\$ 28,833,374	100.00%	\$ 26,517,313	100.00%
<b>CURRENT FUND EXPENDITURES</b>				
Total Instructional Cost	\$ 11,549,690	40.06%	\$ 10,629,412	40.08%
Research	\$ 23,947	0.08%	\$ 23,947	0.09%
Public Service	\$ 220,916	0.77%	\$ 197,866	0.75%
Academic Support	\$ 2,785,852	9.66%	\$ 2,489,468	9.39%
Student Services	\$ 2,470,243	8.57%	\$ 2,417,286	9.12%
Institutional Support	\$ 4,167,280	14.45%	\$ 3,919,711	14.78%
Operations & Maintenance	\$ 4,791,306	16.62%	\$ 4,347,741	16.40%
Scholarships & Fellowships	\$ 2,824,140	9.79%	\$ 2,491,882	9.40%
Mandatory Transfers	\$ -	0.00%	\$ -	0.00%
Non-Mandatory Transfers	\$ -	0.00%	\$ -	0.00%
<b>TOTAL CURRENT EXPENDITURES</b>	\$ 28,833,374	100.00%	\$ 26,517,313	100.00%

SOURCE: MUW General Fund Budgets

**Table E:1a**  
**2007-2008 MUW GENERAL FUND BUDGET**  
**PERCENT OF TOTAL E&G REVENUE BY BUDGET ENTITY**



**Table E:1b**  
**2007-2008 MUW GENERAL FUND BUDGET**  
**PERCENT OF TOTAL E&G EXPENDITURES BY BUDGET ENTITY**



**Table E:2  
 Authorization of State General Obligation Bonds for MUW  
 FY 1990 - 2007**

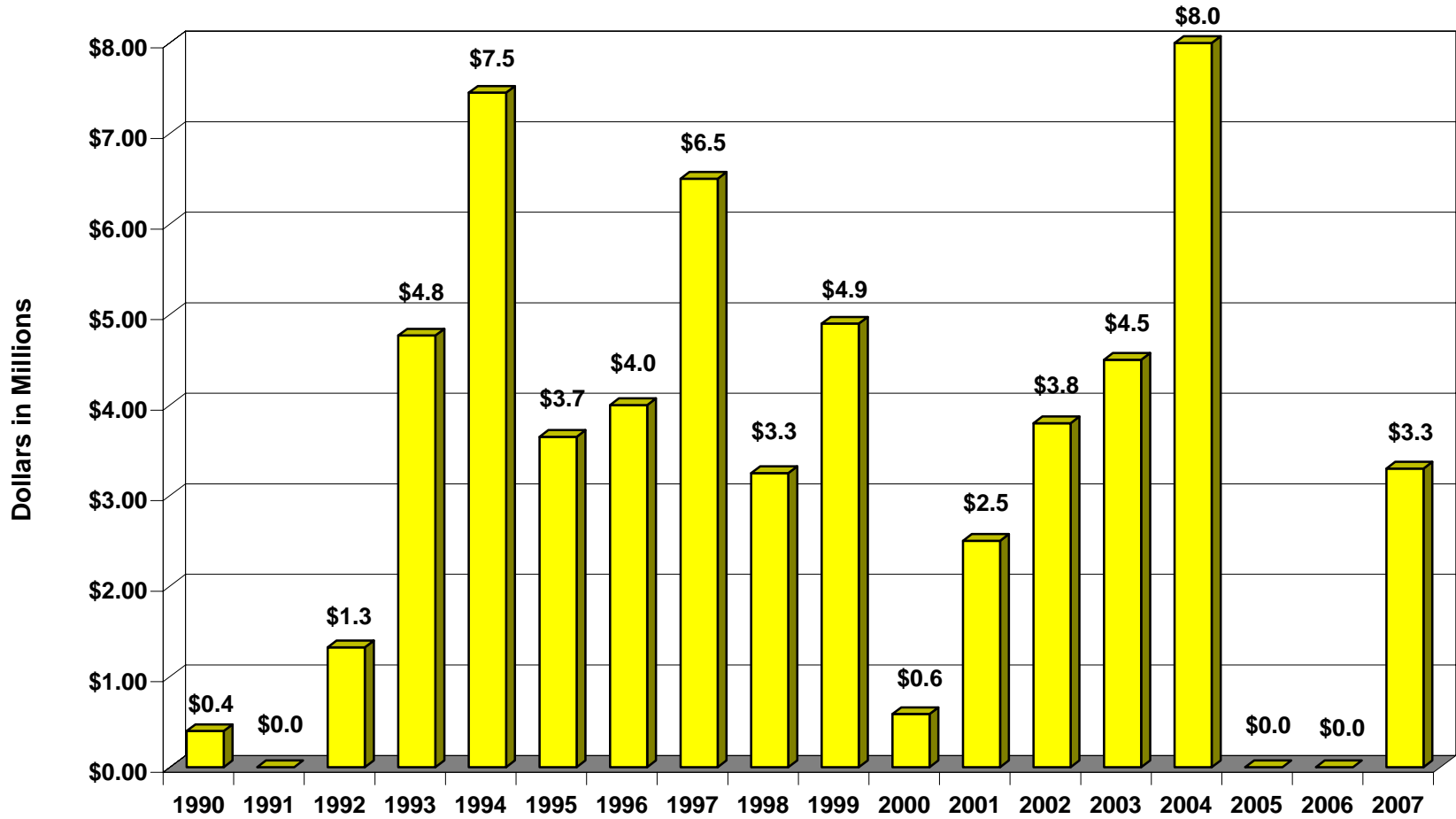
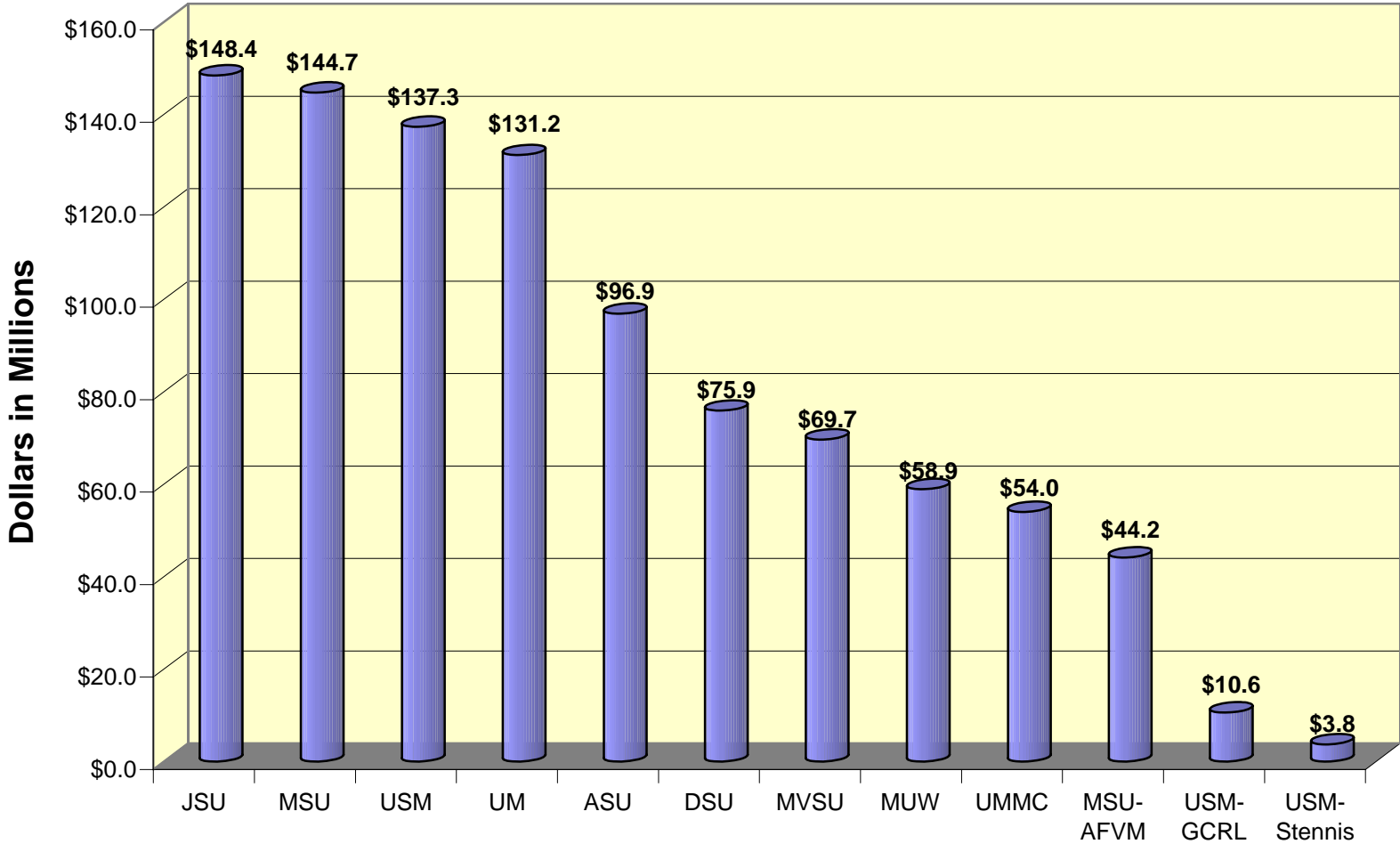


Chart does not include MS Emergency Mgt. Agency disaster recovery funds.  
 Bonds approved in FY 2007-08 will be added in late spring 2008 or summer 2008.

**Table E:3  
 Authorization of State General Obligation Bonds for IHL FY 1990 - 2007**



**Chart does not include \$35.6 million Ayers bonds divided between ASU, JSU, and MVSU.  
 Chart does not include MUW's MS Emergency Mgt. Agency disaster recovery funds.  
 Bonds approved in FY 2007- 08 will be added in late spring 2008 or summer 2008.**



## Explanation of Terms

**Academic Year** is the year that begins with the first summer session and continues through the next spring session; for example, Academic Year 2007-2008 refers to Summer 2007, Fall 2007, and Spring 2008.

**ACT** is the American College Test, which is divided into four main sections: Mathematics, English, Reading, and Science Reasoning.

**CIP Codes** are the Classification of Instructional Program Codes that were developed in 2000. These six-digit codes are used to answer questions concerning program enrollments and completions on three of the IPEDS Surveys: Institutional Characteristics, Completions, and Enrollment in Occupationally Specific Programs.

**Cohort** refers to a specific population, which is studied over a period of time, such as a group of students who enrolled for the first time in the Fall of 2007.

**EMAS** is the Enrollment Management Action System software that is used by the Admissions Office.

**Fiscal Year** is the year that begins on July 1 and ends on June 30; for example, Fiscal Year 2007-2008 (FY 08) extends from July 1, 2007 through June 30, 2008.

**Full-time graduate student** is one who is enrolled in 9 or more semester credit hours.

**Full-time undergraduate student** is one who is enrolled in 12 or more semester credit hours.

**Graduate FTE** (full-time equivalent) is calculated by dividing total graduate semester credit hours by 12.

**Headcount** as defined by IHL is the actual number of different individuals enrolled in credit courses. Headcount can be unduplicated or duplicated; a duplicated headcount duplicates students who take classes on more than one campus. According to IHL's duplicated headcount definition, an undergraduate student who takes nine hours on main campus and three hours at Tupelo is counted as two part-time undergraduate students. In duplicated headcount, a student's full-time/part-time status is determined by hours per campus not total hours taken.

**IHL** refers to the Board of Trustees of State Institutions of Higher Learning in Mississippi.

**IPEDS** is the Integrated Post-secondary Education Data System.

**Non-traditional student**, as defined by IHL, refers to an undergraduate student who is 25 years of age or over.

**Part-time graduate student** is one who is enrolled in less than 9 semester credit hours.

**Part-time undergraduate student** is one who is enrolled in less than 12 semester credit hours.

**Ranked faculty** are full-time faculty positions including instructors, assistant professors, associate professors, and professors.

**SREB** (Southern Regional Education Board) States include: Alabama, Arkansas, Delaware, Florida, Georgia, Kentucky, Louisiana, Mississippi, Maryland, North Carolina, Oklahoma, South Carolina, Tennessee, Texas, Virginia, and West Virginia.

**Student Level, as defined by IHL  
Definitions Effective as of the Beginning of Summer 2001**

**Freshmen** – Students who have completed less than 30 semester hours.

**Sophomores** – Students who have completed at least 30 semester hours, but fewer than 60 semester hours.

**Juniors** – Students who have completed at least 60 semester hours, but fewer than 90 semester hours.

**Seniors** – Students who have completed at least 90 semester hours, but have not completed all the requirements for the undergraduate degree for which she/he is currently enrolled.

**Fifth Year Level** – Student is at advanced undergraduate upper level in five-year programs (e.g. architecture and engineering) or students with a bachelor's or higher degree who are taking additional undergraduate courses.

**Master's** – Student is in a program or degree that usually covers one year and approximately 30 semester hours above the baccalaureate.

**Specialist** – Student is in a program or degree that usually covers one year and approximately 30-36 semester hours above the baccalaureate.

**Doctoral** – Student is in a program or degree that usually covers two years and approximately 60 semester hours above the master's

***Unclassified Post-baccalaureate*** – Student is not a candidate for a Baccalaureate degree or other formal award, although taking graduate classes with other students. Includes but is not limited to “special” and other students taking first-professional or graduate courses, but who are not working toward a degree.

***First Professional*** – Student is in the first year of a Year/Level 1 program or degree leading to the first level of professional training, as recognized by others in the profession. Examples: J.D., M.D., D.V.M. etc.

**Total Operating Budget** includes restricted, designated, and auxiliary funding.

**Type of current registration as defined by IHL:**

***First-time Freshman*** – (1) an entering freshman granted fewer hours than required for transfer status (less than 12 hours), including students enrolled in the fall term who attended college for the first time in the prior summer term and did not have the twelve hours required for transfer status or (2) a student who successfully completed the twelve hour Summer Development Program regardless of the institution attended or (3) a student who entered with advance standing (college credits earned before high school graduation)

***Returning Student*** – An undergraduate student who has registered at this institution during the preceding regular term and would not be classed as a first-time freshman.

***Readmitted Student*** – An undergraduate student who previously attended this institution but did not attend this institution during the previous regular term.

***Transfer Student*** – An undergraduate student entering the reporting institution for the first time who was granted at least twelve hours toward a degree or certificate for work done at another post-secondary institution – exceptions include Summer Developmental Program participants and students with advance placement credit or some other form of advanced standing.

***Returning Graduate Students*** – A student who is enrolled for credit for work creditable toward a graduate degree, i.e., master’s, specialist, or doctorate and was previously registered as a graduate student at this institution or another institution.

***First-Professional Student*** – A student who is enrolled for work creditable toward a first professional degree (law, dentistry, medicine)

***Transient Student*** – A student who is regularly enrolled and in good standing at an institution other than the reporting institution and is taking a course or courses at the reporting institution which he/she intends to transfer to his/her regular institution.

***High School Student Taking College Courses*** – A student who is still in high school but has special permission to take a college level course.

***Non-formula Students 21 and over*** - A student who is currently registered under provisions or original admission code of 6 on data element 4-112 which is for students who are at least age 21 and who do not meet admissions standards and who do not fall into the first five Original Admission Code categories.

***First-time graduate student*** – A new graduate student. One who has not been registered previously as a graduate student.

***Other*** – A student who is not classified in one of the preceding categories.

***Summer Developmental Program Participant*** – A student who does not meet one of the four criteria to gain admission defined by Original Admission Code (Element 4-112, Codes “E” through “H”) Valid in summer term only

**Unduplicated headcount** figures count each individual student once regardless of the number of branch campus affiliations (Tupelo, Columbus Air Force Base).

**Undergraduate FTE** (full-time equivalent) is calculated by dividing total undergraduate semester credit hours by 15.

**Unranked faculty** are full-time faculty positions filled by lecturers who do not have tenure and cannot seek rank.

**University Abbreviations:**

**ASU** – Alcorn State University

**DSU** – Delta State University

**JSU** – Jackson State University

**MSU** –Mississippi State University

**MUW** – Mississippi University for Women

**MVSU** – Mississippi Valley State University

**UM** – University of Mississippi

**UMMC** – University of Mississippi Medical Center

**USM** – University of Southern Mississippi

**MSU-AFVM** – Mississippi State University’s Division of Agriculture, Forestry, and  
Veterinary Medicine

**USM-GCRL** – University of Southern Mississippi’s Gulf Coast Research Laboratory

**USM-Stennis** – University of Southern Mississippi’s Stennis Space Center