

Mississippi University for Women Fact Book 2008-2009



Office of Institutional Research

**Reneau Hall - 118
1100 College St., MUW-160
Columbus, MS 39701
662-329-8543**

MISSISSIPPI UNIVERSITY FOR WOMEN

FACT BOOK 2008 - 2009

Table of Contents

Organizational Chart.....	1
MUW Vision, Mission, & Guiding Principles	2
MUW Goals	4
MUW Profile	5

<u>Table</u>	<u>Description</u>	
A:1.	First-time Freshmen	7
A:2.	First-time, Full-time Bachelor’s Degree Seeking Freshman Headcount - Graph	8
A:3.	First-time Transfers	9
A:4.	First-time, Full-time Bachelor’s Degree Seeking Freshman Cohort Retention & Graduation Rates.....	10
A:5.	First-time, Full-time Bachelor’s Degree Seeking Transfer Cohort Retention & Graduation Rates.....	11
A:6.	First-time, Full-time Bachelor’s Degree Seeking Freshman ACT Scores	12
B:1.	Duplicated Headcount and FTE Enrollment - Fall Terms	13
B:1a.	Duplicated Headcount and FTE Enrollment - Fall Terms - Graph	14
B:2.	Unduplicated Headcount and FTE Enrollment - Fall Terms	15
B:2a.	Unduplicated Headcount and FTE Enrollment - Fall Terms - Graph	16
B:3.	Unduplicated Enrollment By Gender - Fall 1999 to Fall 2008.....	17
B:3a.	Unduplicated Enrollment By Gender - Fall 1999 to Fall 2008 - Graph	18
B:4.	Unduplicated Enrollment By Ethnicity - Fall 1999 to Fall 2008.....	19
B:4a.	Unduplicated Enrollment By Ethnicity - Fall 1999 to Fall 2008 - Graph.....	20
B:5.	Unduplicated Enrollment and Credit Hour Production by FT/PT Status	21
B:5a.	FT/PT Unduplicated Headcount - Fall Terms - Graph	22
B:6.	Unduplicated Enrollment by Ethnicity, Gender, FT/PT Status - Fall 2008.....	23
B:6a.	Undergraduate, Unduplicated Enrollment by Ethnicity, Gender, FT/PT Status	24

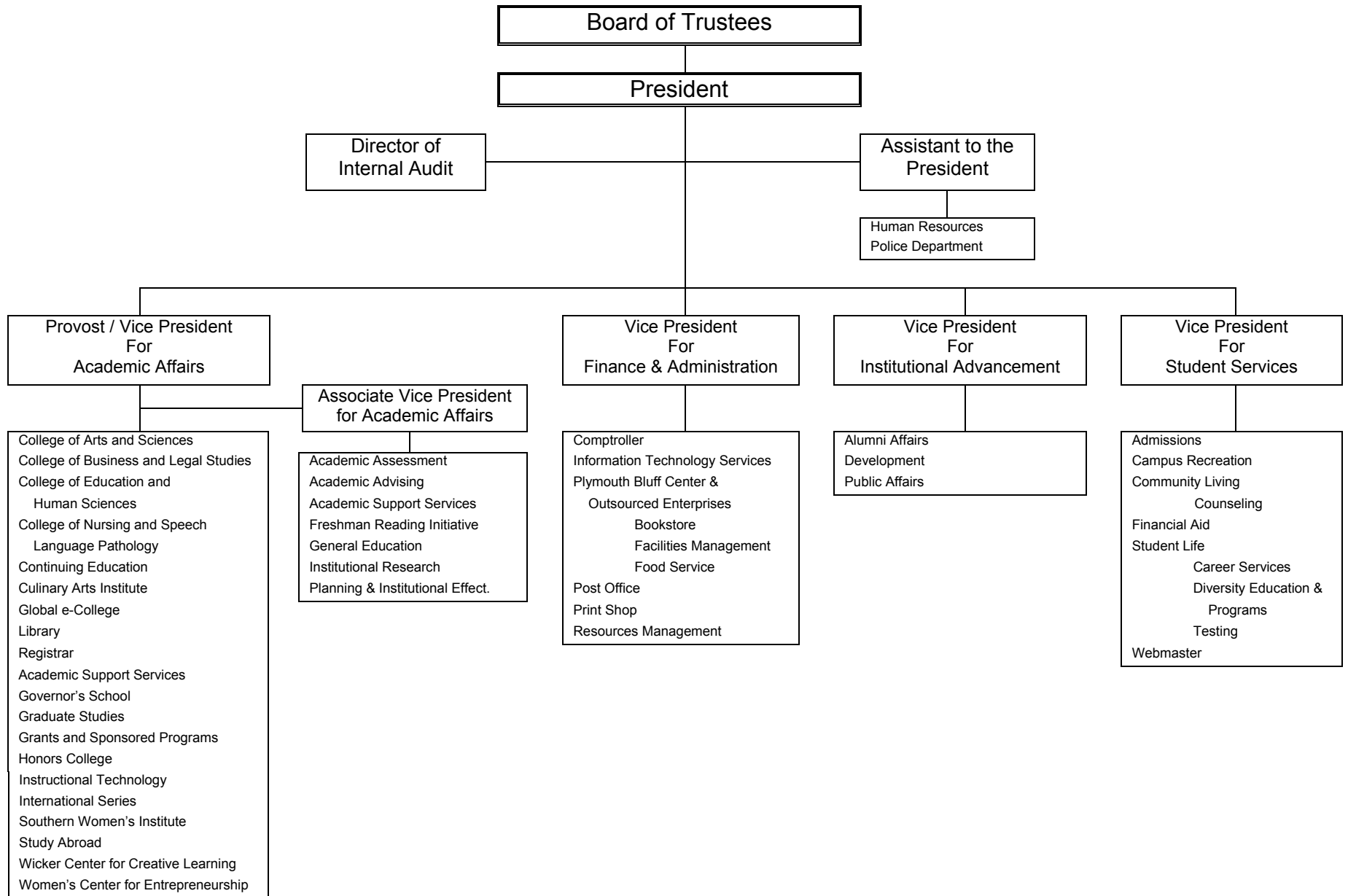
B:6b.	Graduate Unduplicated Enrollment by Ethnicity, Gender, FT/PT Status	25
B:7.	Unduplicated Enrollment By Student Classification - Fall Terms.....	26
B:7a.	Unduplicated Enrollment By Student Classification - Fall Terms - Graph	27
B:8.	Unduplicated Headcount Enrollment by Credit Hours and Student Classification	28
B:9.	Age Distribution by Student Classification: Unduplicated Headcount	29
B:10.	Non-traditional Vs. Traditional Students - Unduplicated Headcount - Fall Terms	30
B:10a.	Non-traditional Vs. Traditional Students - Graph.....	31
B:11.	Residence Hall Student Headcount	32
B:12.	Residence Hall Students Vs. Commuter Students - Unduplicated Headcount	33
B:13.	Unduplicated Enrollment by State of Residence: Fall 2004 - 2008.....	34
B:14.	Unduplicated Enrollment by State of Residence & Student Classification – Fall 2008	35
B:15.	Unduplicated Headcount Enrollment by Country: Fall 2004-2008.....	36
B:16.	Unduplicated Enrollment by MS County: Fall 2004-2008.....	37
C:1.	Enrollment by Major and Program Type – Unduplicated Headcount	40
C:2.	Unduplicated Headcount Enrollment by College: Fall 2006 - Fall 2008	43
C:3.	Class Type Enrollment.....	44
C:4.	Credit Hour Generation by College & Department	45
C:5.	University Grade Distribution by College & Dept. - Fall 2008.....	48
C:6.	Degrees Granted by Major, Ethnicity, and Gender - Academic Year 2008	51
C:6a.	Degrees Awarded Academic Year 2008 - Chart.....	53
C:7.	History of Degrees Granted by Major and Gender.....	54
C:7a.	Degrees Granted AY 1999-2008 - Graph	56
C:7b.	Top Bachelor and Master Degrees Awarded in Last Five Years - Chart.....	57
D:1.	Faculty Profile.....	58
D:1a.	Full-time Faculty Profile - Fall 2008 - Chart	59
E:1.	Summary of Budgeted E&G Revenues and Expenditures	60
E:1a.	2008-2009 E&G Revenues by Budget Entity - Chart.....	61
E:1b.	2008-2009 E&G Expenditures by Budget Entity - Chart	62

E:2. Authorization of State General Obligation Bonds for MUW FY 1990-2008..63

E:3. Authorization of State General Obligation Bonds for IHL FY 1990-200864

APPENDIX: Explanation of Terms65

**Mississippi University for Women
Organizational Chart
Effective 07/01/08**



Mississippi University for Women

Vision, Mission and Guiding Principles

Vision

Building on its long tradition of excellence in liberal arts and professional education, as well as its historic focus on academic and leadership development for women, Mississippi University for Women will continue to be a university that prepares both women and men for successful lives by providing a high-quality education in a personalized learning environment.

Mission

A Carnegie Master's II public institution, Mississippi University for Women provides high-quality undergraduate and graduate education for women and men in a variety of liberal arts and professional programs, while maintaining its historic commitment to academic and leadership development for women. MUW provides education in Business and Communication, Education and Human Sciences, Fine and Performing Arts, Health and Kinesiology, Humanities, Culinary Arts, Nursing, Science and Mathematics, utilizing small classes and emphasizing a personalized learning environment. The graduates of MUW are prepared for competitive careers and excellent graduate and professional schools. MUW provides educational opportunities throughout Mississippi and the United States while addressing the unique educational and public service needs of northeast Mississippi and adjoining counties in northwest Alabama.

Guiding Principles

MUW provides high-quality instructional programs that emphasize teaching and learning. With faculty and staff of the highest caliber, MUW is dedicated to providing a campus environment for students that encourages lifelong learning, strong career preparation, and personal growth. Graduates are expected to have skills in communication, technology, and critical thinking, as well as an awareness of self, gender-related issues, cultural diversity, and responsible citizenship.

MUW is student oriented. MUW provides small classes and emphasizes personalized student attention, so that each student will have the opportunity to succeed. MUW offers a student-life program that stimulates learning and leadership development.

MUW values research, scholarship, and creativity. While MUW is primarily a teaching institution, the university supports research, scholarship, and creativity to enhance the professional development of faculty and staff in order to better prepare students.

MUW is committed to diversity among its faculty, staff, and students. The faculty, staff, and students of MUW represent the global society in which we live. MUW believes that

diversity allows students to grow in their understanding of self and others.

MUW endorses sound organizational principles. MUW is committed to operational efficiency, collaborative strategic planning, institutional effectiveness, and creative problem solving.

MUW meets regional, state, and national needs for higher education. MUW responds to the needs of the local community by providing cultural activities; programs for intellectual, professional, and social development; and by assisting in economic development. MUW extends its outreach to the state and nation using multiple delivery methods, including the internet and other advanced systems.

MUW is committed to public service. MUW forms partnerships with businesses, as well as with educational, governmental, public service, and charitable organizations, to create opportunities that provide economic and social advantages for the institution, community, and region.

Approved by the Mississippi IHL Board on January 15, 2004

**“W-2009”
A Strategic Plan for MUW
Goals**

MUW Goal 1: Provide high quality, student-centered instructional programs in a personalized learning environment.

MUW Goal 2: Ensure high quality academic and leadership preparation for women.

MUW Goal 3: Provide student life programs that stimulate intellectual, social, emotional, physical, and leadership development.

MUW Goal 4: Increase enrollment through effective recruitment and retention strategies.

MUW Goal 5: Promote effective organizational principles.

MUW Goal 6: Provide programs and services that enhance the cultural, intellectual, social, and professional development of the citizens of our region, state, and nation.

MUW Goal 7: Promote diversity among MUW students, faculty, and staff.

MUW Goal 8: Encourage research, scholarship, and creative endeavors to enhance instruction and professional development.

MUW Goal 9: Provide physical resources, infrastructure, and technology to advance the educational, operational, and public service goals of the University.

MUW Goal 10: Build partnerships and public awareness to support the University’s mission and to promote institutional and economic development.

Approved by the President on March 8, 2004

MUW Profile

Mississippi University for Women has been ranked a top Southern public master's university by U.S. News & World Report for the fifth year in a row.

MUW was also ranked 12th among Southern public master's universities in the 2009 edition of "America's Best Colleges." MUW also appeared as No. 33 in the Best Universities Master's by region category.

2,365 unduplicated students are enrolled at MUW for the Fall 2008 semester.

73 % are full-time students.

83.9 % are female.

16.1 % are male.

60 % are white.

36 % are African-American.

12 % are degree seeking new transfer students.

10 % are first-time, full-time bachelor's degree seeking freshman students.

24.90 is the average age of a MUW student.

23.31 is the average age of a male student.

25.21 is the average age of a female student.

68 % of MUW students are 24 years old or younger.

32 % of MUW students are 25 or older.

Student to Faculty FTE Ratio: The Student to Faculty FTE ratio is approximately 13 to 1.

MUW Employees

MUW has approximately 300 full-time employees.

Approximately 72 % of full-time employees are female.

Approximately 28 % of full-time employees are men.

Approximately 17 % of full-time employees are minorities.

MUW has approximately 69 part-time employees

MUW is an affirmative action/equal opportunity institution.

Student Fees Academic Year 2008-2009

Undergraduate

Semester Hour	\$184.25 (In-state)
Semester Hour	\$486.95 (Out-of-state)

Graduate

Semester Hour	\$245.70 (In-state)
Semester Hour	\$649.30 (Out-of-state)

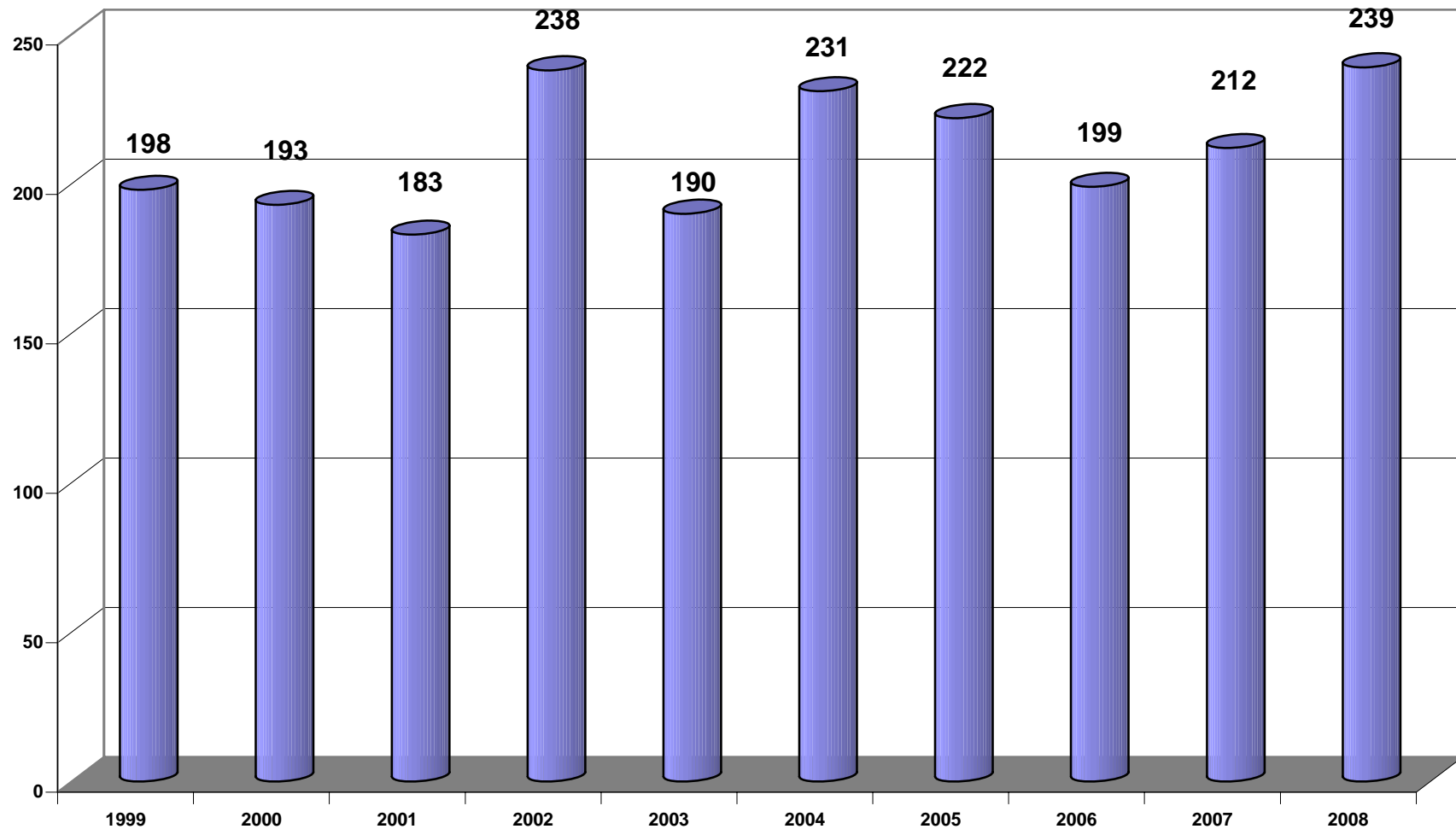
Grounds and Buildings

The campus covers more than 114 acres within the historic district of central Columbus, MS. Twenty-three of more than 60 buildings are listed on the National Register of Historic Places.

Table A:1 First-time Freshmen

	Fall 2007	Fall 2008
Applicants	1356	1223
Accepted	627	594
Enrolled	241	258
Of those Enrolled		
First-time Full-time Bachelor's Degree Seeking	212	239
First-time Part-time Bachelor's Degree Seeking	4	5
First-time Full-time Other Degree Seeking	23	13
First-time Part-time Other Degree Seeking	2	1
Total Degree Seeking Freshmen	241	258

**Table A:2 First-time, Full-time Bachelor's Degree Seeking Freshman Headcount
Fall 1999 - 2008**



*In Fall 2006, our Pre-BSN, Pre-OT, and Pre-Engineering Students are included in the Other Degree Seeking Cohort instead of the Bachelor's Degree Seeking Cohort. The Other Degree Seeking Cohorts includes ASN and Pre-ASN students for all of the fall semesters (1999-2008) included in the graph.

Table A:3 First-time Transfers

	Fall 2007	Fall 2008
Applicants	1025	915
Accepted	537	462
Enrolled	313	282
Of those Enrolled		
Full-time Degree Seeking	266	243
Part-time Degree Seeking	42	39
Total Degree Seeking	308	282

Table A:4
First-time Full-time Bachelor's Degree Seeking Freshman Cohort Retention & Graduation Rates

	Fall 2001		Fall 2002		Fall 2003		Fall 2004		Fall 2005		Fall 2006		Fall 2007		Fall 2008	
Fall 2001 Cohort																
Enrolled	183		117	63.93%	93	50.82%	83	45.36%	36	19.67%	13	7.10%	9	4.92%	5	2.73%
Graduated	0		0	0.00%	0	0.00%	1	0.55%	44	24.04%	63	34.43%	66	36.07%	72	39.34%
Total	183		117	63.93%	93	50.82%	84	45.90%	80	43.72%	76	41.53%	75	40.98%	77	42.08%

	Fall 2002		Fall 2003		Fall 2004		Fall 2005		Fall 2006		Fall 2007		Fall 2008	
Fall 2002 Cohort														
Enrolled	238		160	67.23%	144	60.50%	127	53.36%	65	27.31%	31	13.03%	22	9.24%
Graduated	0		0	0.00%	0	0.00%	1	0.42%	61	25.63%	95	39.92%	100	42.02%
Total	238		160	67.23%	144	60.50%	128	53.78%	126	52.94%	126	52.94%	122	51.26%

	Fall 2003		Fall 2004		Fall 2005		Fall 2006		Fall 2007		Fall 2008	
Fall 2003 Cohort												
Enrolled	190		128	67.37%	111	58.42%	92	48.42%	36	18.95%	14	7.37%
Graduated	0		0	0.00%	0	0.00%	0	0.00%	49	25.79%	70	36.84%
Total	190		128	67.37%	111	58.42%	92	48.42%	85	44.74%	84	44.21%

	Fall 2004		Fall 2005		Fall 2006		Fall 2007		Fall 2008		Fall 2009	
Fall 2004 Cohort												
Enrolled	231		160	69.26%	120	51.95%	98	42.42%	46	19.91%		
Graduated	0		0	0.00%	0	0.00%	1	0.43%	55	23.81%		
Total	231		160	69.26%	120	51.95%	99	42.86%	101	43.72%		

	Fall 2005		Fall 2006		Fall 2007		Fall 2008		Fall 2009		Fall 2010	
Fall 2005 Cohort												
Enrolled	222		155	69.82%	128	57.66%	112	50.45%				
Graduated	0		0	0.00%	0	0.00%	1	0.45%				
Total	222		155	69.82%	128	57.66%	113	50.90%				

	Fall 2006		Fall 2007		Fall 2008		Fall 2009		Fall 2010		Fall 2011	
Fall 2006 Cohort												
Enrolled	199		132	66.33%	97	48.74%						
Graduated	0		0	0.00%	0	0.00%						
Total	199		132	66.33%	97	48.74%						

	Fall 2007		Fall 2008		Fall 2009		Fall 2010		Fall 2011		Fall 2012	
Fall 2006 Cohort												
Enrolled	212		145	68.40%								
Graduated	0		0	0.00%								
Total	212		145	68.40%								

*Students receiving more than one degree are only counted once.
 **If a student receives an ASN degree, it is not reflected in this table.

Table A:5
First-time Full-time Bachelor's Degree Seeking Transfer Cohort Retention & Graduation Rates

	Fall 2001		Fall 2002		Fall 2003		Fall 2004		Fall 2005		Fall 2006		Fall 2007		Fall 2008	
Fall 2001 Cohort																
Enrolled	165		120	72.73%	72	43.64%	29	17.58%	14	8.48%	10	6.06%	6	3.64%	4	2.42%
Graduated			1	0.61%	39	23.64%	77	46.67%	86	52.12%	90	54.55%	93	56.36%	94	56.97%
Total	165		121	73.33%	111	67.27%	106	64.24%	100	60.61%	100	60.61%	99	60.00%	98	59.39%

	Fall 2002		Fall 2003		Fall 2004		Fall 2005		Fall 2006		Fall 2007		Fall 2008	
Fall 2002 Cohort														
Enrolled	182		135	74.18%	90	49.45%	48	26.37%	18	9.89%	6	3.30%	7	3.85%
Graduated			0	0.00%	39	21.43%	81	44.51%	98	53.85%	110	60.44%	111	60.99%
Total	182		135	74.18%	129	70.88%	129	70.88%	116	63.74%	116	63.74%	118	64.84%

	Fall 2003		Fall 2004		Fall 2005		Fall 2006		Fall 2007		Fall 2008	
Fall 2003 Cohort												
Enrolled	190		135	71.05%	77	40.53%	38	20.00%	19	10.00%	9	4.74%
Graduated			1	0.53%	46	24.21%	87	45.79%	100	52.63%	104	54.74%
Total	190		136	71.58%	123	64.74%	125	65.79%	119	62.63%	113	59.47%

	Fall 2004		Fall 2005		Fall 2006		Fall 2007		Fall 2008		Fall 2009	
Fall 2004 Cohort												
Enrolled	241		158	65.56%	97	40.25%	46	19.09%	15	6.22%		
Graduated			7	2.90%	55	22.82%	99	41.08%	117	48.55%		
Total	241		165	68.46%	152	63.07%	145	60.17%	132	54.77%		

	Fall 2005		Fall 2006		Fall 2007		Fall 2008		Fall 2009		Fall 2010	
Fall 2005 Cohort												
Enrolled	237		155	65.40%	93	39.24%	40	16.88%				
Graduated			3	1.27%	63	26.58%	99	41.77%				
Total	237		158	66.67%	156	65.82%	139	58.65%				

	Fall 2006		Fall 2007		Fall 2008		Fall 2009		Fall 2010		Fall 2011	
Fall 2006 Cohort												
Enrolled	238		145	60.92%	100	42.02%						
Graduated			5	2.10%	44	18.49%						
Total	238		150	63.03%	144	60.50%						

	Fall 2007		Fall 2008		Fall 2009		Fall 2010		Fall 2011		Fall 2012	
Fall 2006 Cohort												
Enrolled	226		160	70.80%								
Graduated			7	3.10%								
Total	226		167	73.89%								

*Students receiving more than one degree are only counted once.
 **If a student receives an ASN degree, it is not reflected in this table.

**Table A:6 First-time, Full-time Bachelor's Degree Seeking Freshman
ACT Scores**

Fall 2004	Composite	Math	English	Reading	Science Reasoning
Twenty-fifth percentile	18	17	18	18	19
Fiftieth percentile	20	18	21	21	20
Seventy-fifth percentile	24	22	25	25	23
Average	21.03	19.15	22.01	21.55	20.65
Minimum	14	7	12	10	14
Maximum	32	30	34	35	30

Fall 2005	Composite	Math	English	Reading	Science Reasoning
Twenty-fifth percentile	18	17	19	18	18
Fiftieth percentile	22	19	22	22	21
Seventy-fifth percentile	25	23	26	27	23
Average	21.69	19.7	22.78	22.86	20.9
Minimum	11	10	10	10	11
Maximum	32	33	35	36	33

Fall 2006	Composite	Math	English	Reading	Science Reasoning
Twenty-fifth percentile	19	17	19	19	18
Fiftieth percentile	21	18	22	22	20
Seventy-fifth percentile	24	21	26	26	23
Average	21.51	19.13	22.52	23.1	20.89
Minimum	16	14	14	12	11
Maximum	32	29	36	36	33

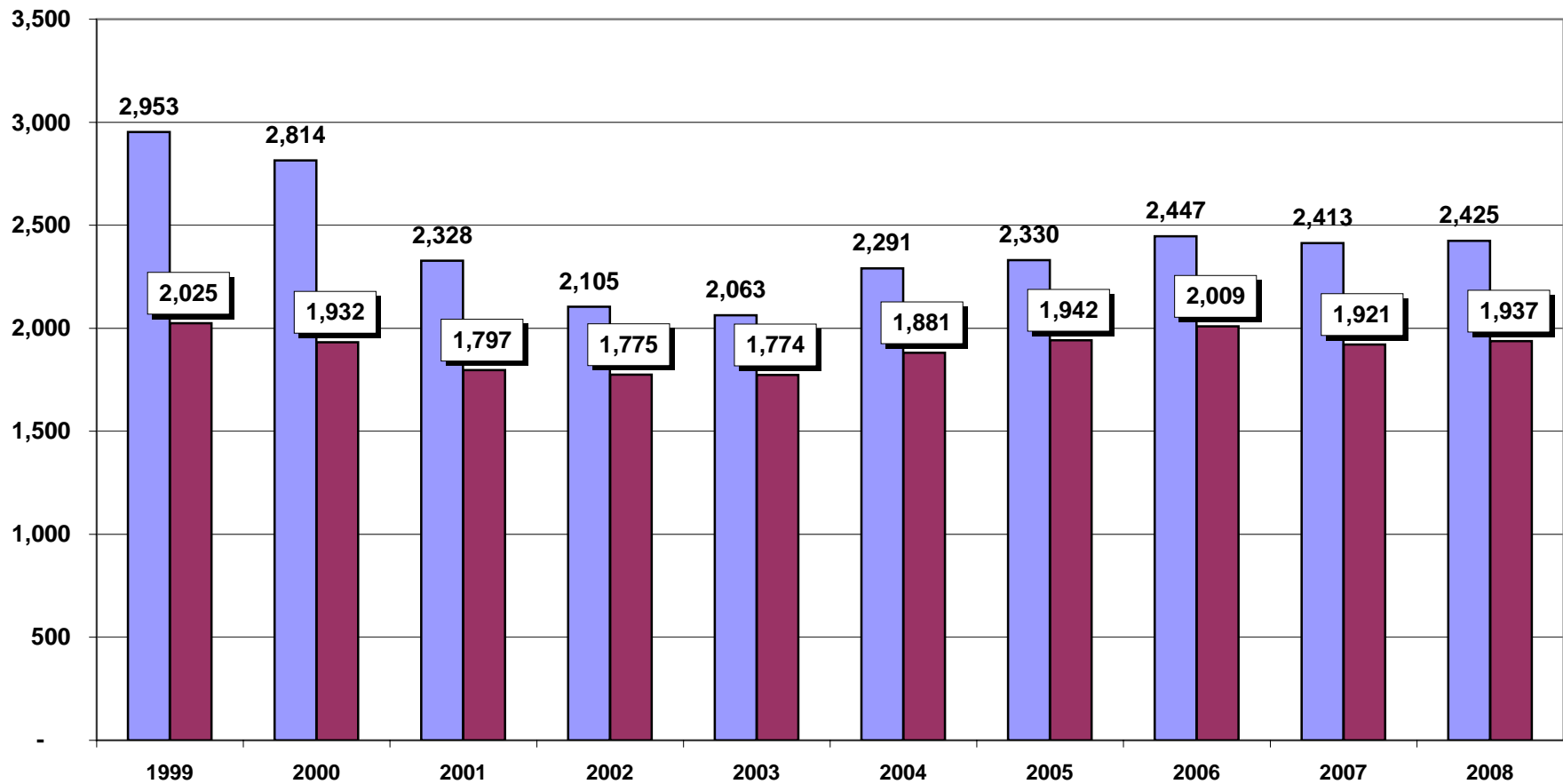
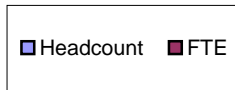
Fall 2007	Composite	Math	English	Reading	Science Reasoning
Twenty-fifth percentile	18	16	18	18	18
Fiftieth percentile	20	18	21	21	20
Seventy-fifth percentile	24	20	25	25	23
Average	20.86	18.81	21.65	22.02	20.2
Minimum	14	13	12	13	12
Maximum	31	33	35	36	32

Fall 2008	Composite	Math	English	Reading	Science Reasoning
Twenty-fifth percentile	18	16	19	18	19
Fiftieth percentile	21	18	22	21	20
Seventy-fifth percentile	24	21	25	26	23
Average	21.21	19.12	22.14	22.06	20.73
Minimum	14	13	10	10	11
Maximum	32	32	35	36	32

Table B:1 Duplicated Headcount and FTE Enrollment**Fall Terms**

Fall	Headcount	% Change Year Ago	Total Cr. Hrs.	% Change Year Ago	Total FTE	% Change Year Ago
1999	2,953		29,212		2,025	
2000	2,814	-4.71%	27,785	-4.88%	1,932	-4.57%
2001	2,328	-17.27%	26,370	-5.09%	1,797	-6.97%
2002	2,105	-9.58%	26,356	-0.05%	1,775	-1.24%
2003	2,063	-2.00%	26,352	-0.02%	1,774	-0.06%
2004	2,291	11.05%	27,899	5.87%	1,881	6.03%
2005	2,330	1.70%	28,765	3.10%	1,942	3.24%
2006	2,447	5.02%	29,837	3.73%	2,009	3.45%
2007	2,413	-1.39%	28,521	-4.41%	1,921	-4.40%
2008	2,425	0.50%	28,754	0.82%	1,937	0.87%

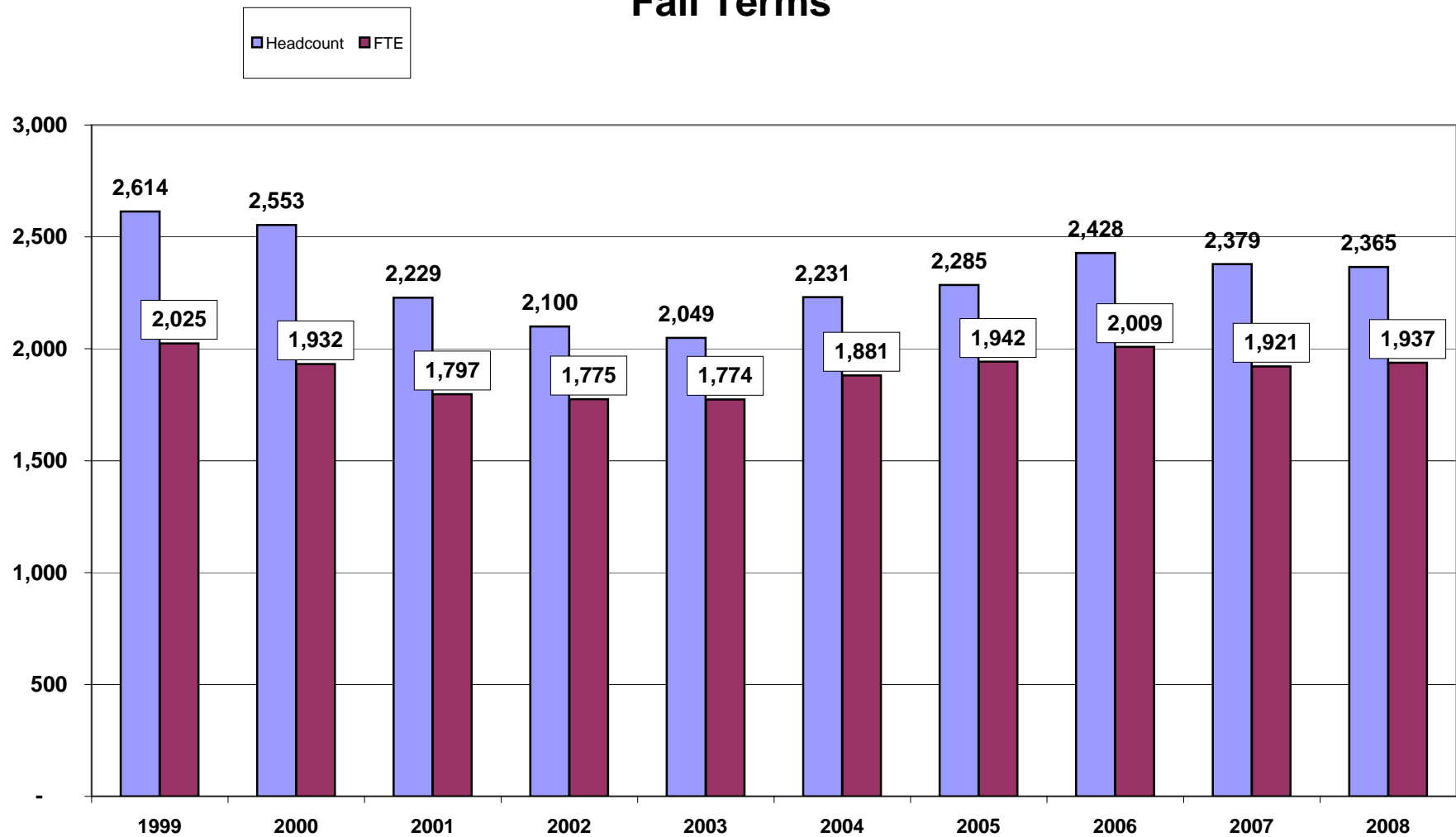
Table B:1a
Duplicated Headcount and FTE Enrollment
Fall Terms



**Table B:2 UNDUPLICATED HEADCOUNT and FTE ENROLLMENT
Fall Terms**

Fall	Headcount	% Change Year Ago	Total Cr. Hrs.	% Change Year Ago	Total FTE	% Change Year Ago
1999	2,614		29,212		2,025	
2000	2,553	-2.33%	27,785	-4.88%	1,932	-4.57%
2001	2,229	-12.69%	26,370	-5.09%	1,797	-6.97%
2002	2,100	-5.79%	26,356	-0.05%	1,775	-1.24%
2003	2,049	-2.43%	26,352	-0.02%	1,774	-0.06%
2004	2,231	8.88%	27,899	5.87%	1,881	6.03%
2005	2,285	2.42%	28,765	3.10%	1,942	3.24%
2006	2,428	6.26%	29,837	3.73%	2,009	3.45%
2007	2,379	-2.02%	28,521	-4.41%	1,921	-4.40%
2008	2,365	-0.59%	28,754	0.82%	1,937	0.87%

Table B:2a
Unduplicated Headcount and FTE Enrollment
Fall Terms



**Table B:3 Unduplicated Enrollment by Gender
FALL 1999 to FALL 2008**

Fall	Total	% Change		No. Female	% Female	No. Male	% Male
		Year Ago					
1999	2,614			2,190	83.78%	424	16.22%
2000	2,553	-2.33%		2,180	85.39%	373	14.61%
2001	2,229	-12.69%		1,905	85.46%	324	14.54%
2002	2,100	-5.79%		1,799	85.67%	301	14.33%
2003	2,049	-2.43%		1,756	85.70%	293	14.30%
2004	2,231	8.88%		1,892	84.81%	339	15.19%
2005	2,285	2.42%		1,936	84.73%	349	15.27%
2006	2,428	6.26%		2,060	84.84%	368	15.16%
2007	2,379	-2.02%		2,010	84.49%	369	15.51%
2008	2,365	-0.59%		1,984	83.89%	381	16.11%

Table B:3a
Unduplicated Enrollment by Gender
Fall terms

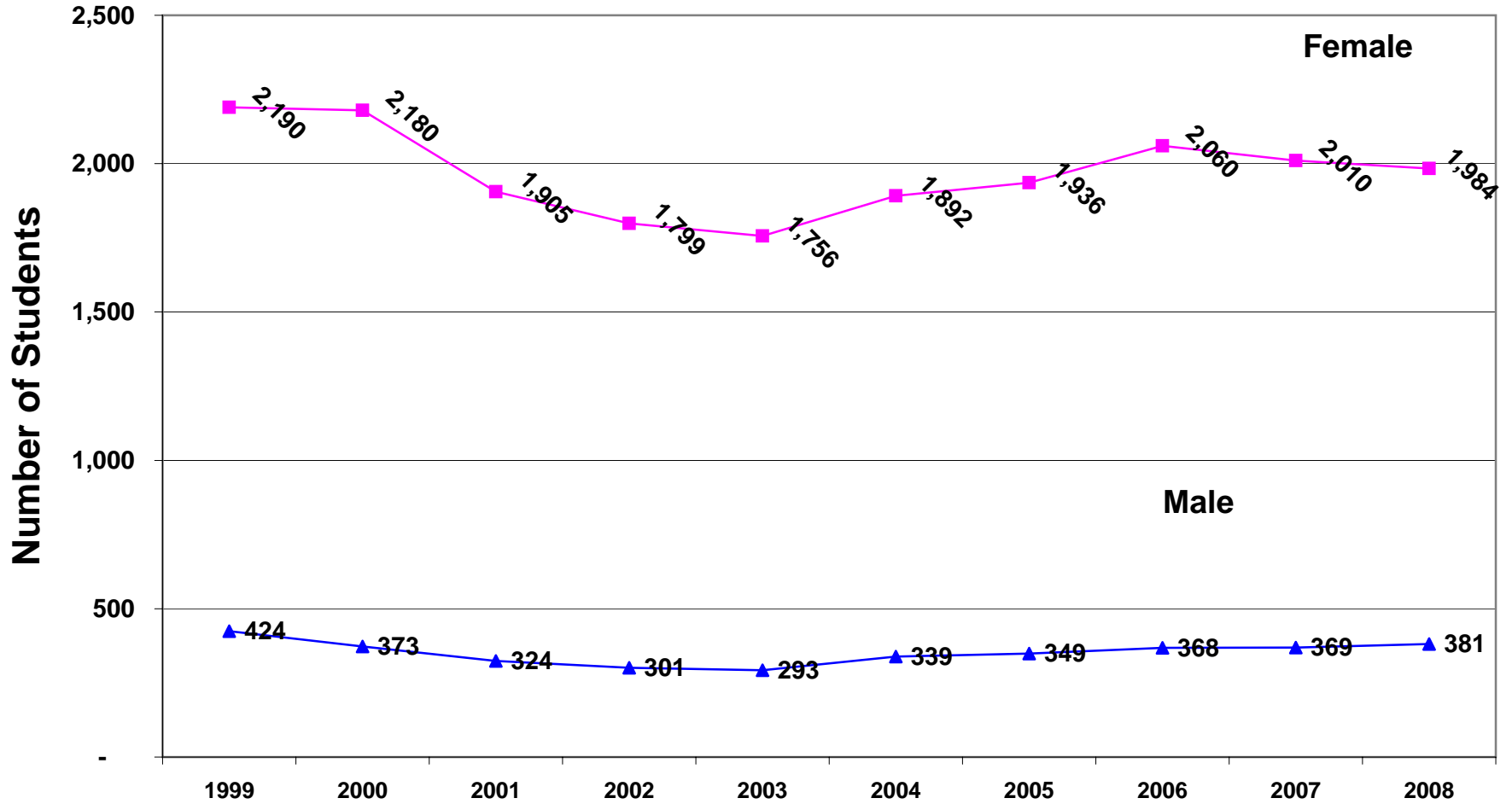


TABLE B:4 Unduplicated Enrollment by Ethnicity

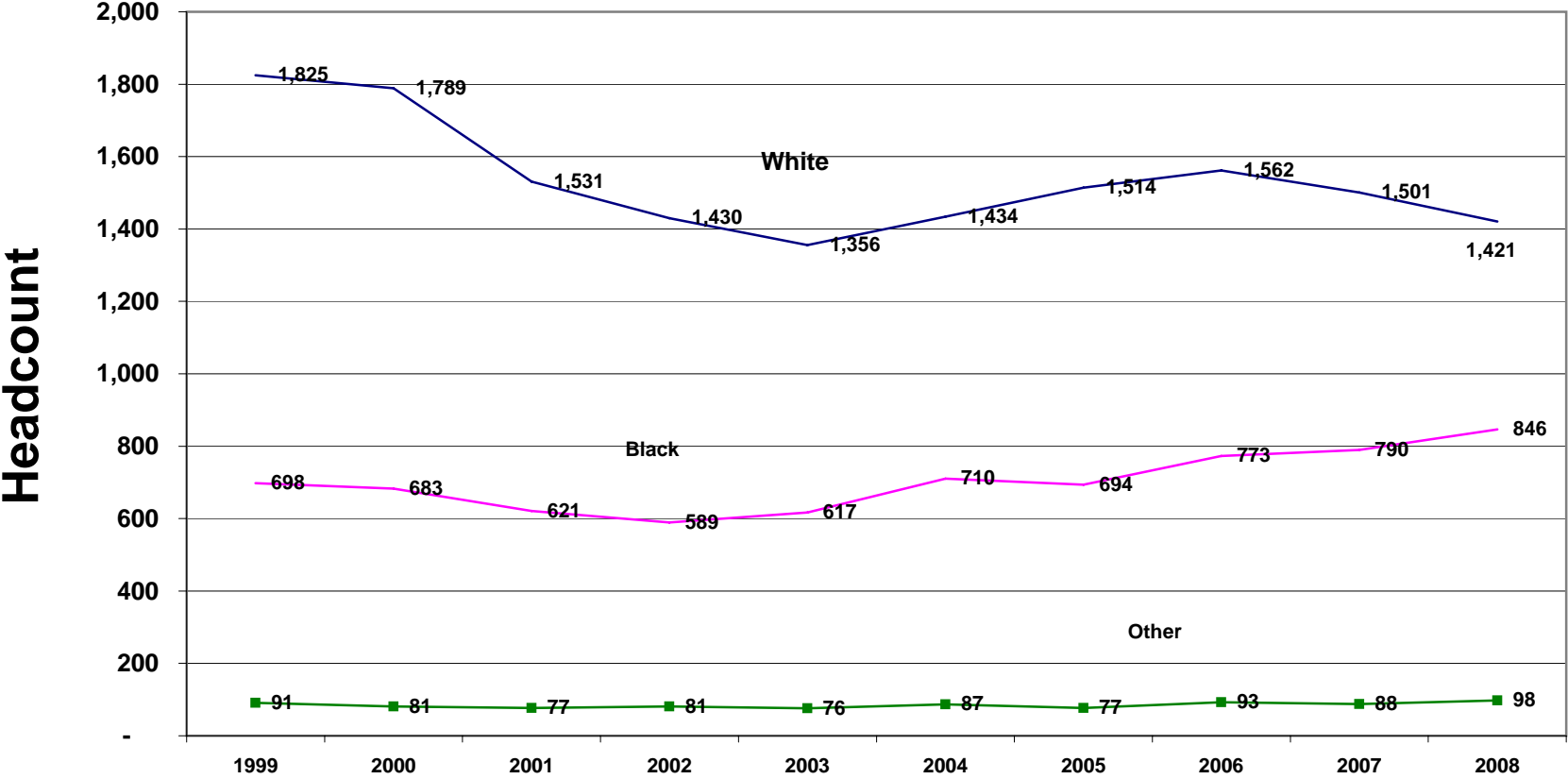
Fall 1999-2008

Fall	White		Black		American Indian/Alaskan Native		Asian or Pacific Islander		Hispanic		Not Ident.		Total	
	#	%	#	%	#	%	#	%	#	%	#	%	#	%
1999	1,825	69.8%	698	26.7%	3	0.1%	11	0.4%	17	0.7%	60	2.3%	2,614	100%
2000	1,789	70.1%	683	26.8%	5	0.2%	9	0.4%	13	0.5%	54	2.1%	2,553	100%
2001	1,531	68.7%	621	27.9%	9	0.4%	17	0.8%	15	0.7%	36	1.6%	2,229	100%
2002	1,430	68.1%	589	28.0%	8	0.4%	14	0.7%	17	0.8%	42	2.0%	2,100	100%
2003	1,356	66.2%	617	30.1%	7	0.3%	24	1.2%	13	0.6%	32	1.6%	2,049	100%
2004	1,434	64.3%	710	31.8%	11	0.5%	28	1.3%	15	0.7%	33	1.5%	2,231	100%
2005	1,514	66.3%	694	30.4%	7	0.3%	31	1.4%	15	0.7%	24	1.1%	2,285	100%
2006	1,562	64.3%	773	31.8%	8	0.3%	46	1.9%	20	0.8%	19	0.8%	2,428	100%
2007	1,501	63.1%	790	33.2%	9	0.4%	39	1.6%	18	0.8%	22	0.9%	2,379	100%
2008	1,421	59.7%	846	35.6%	10	0.4%	46	1.9%	23	1.0%	19	0.8%	2,365	100%

Table B:4a

Unduplicated Enrollment by Ethnicity

Fall Terms



**Table B:5 Unduplicated Enrollment & Credit Hour Production by Full-time/Part-time Status
Fall Terms**

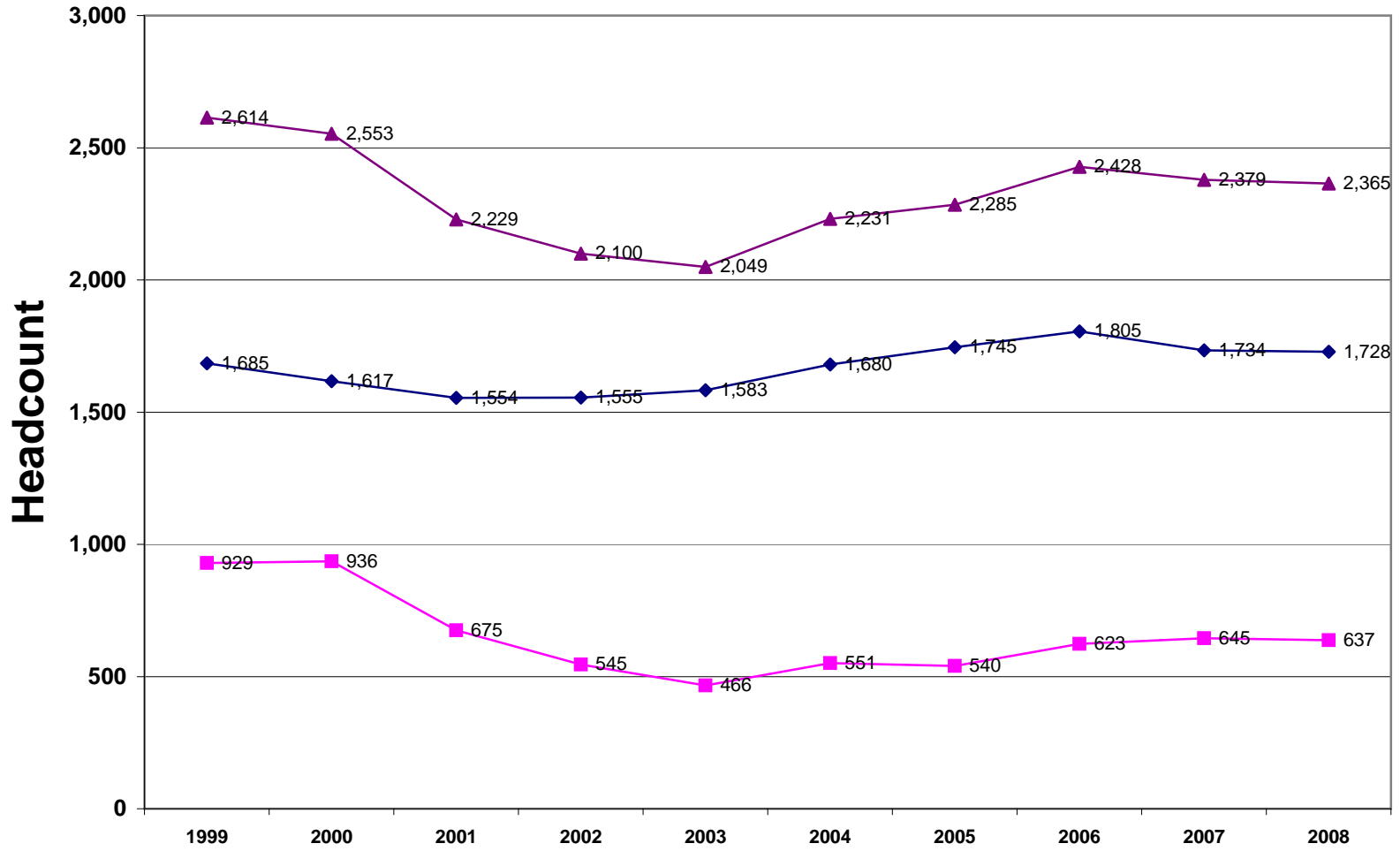
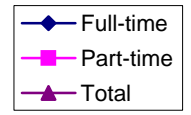
Fall	Headcount											Credit Hours by Student Level										
	Full-time					Part-time					Total	Full-time					Part-time					Total
	UG	GR	Total	UG	GR	Total	UG	GR	Total	Total	UG	GR	Total	UG	GR	Total	UG	GR	Total	Total		
1999	1,626	62%	59	2%	1,685	808	31%	121	5%	929	2,614	24,713	85%	698	2%	25,411	3,370	12%	431	1%	3,801	29,212
2000	1,551	61%	66	3%	1,617	858	34%	78	3%	936	2,553	23,511	85%	759	3%	24,270	3,182	11%	333	1%	3,515	27,785
2001	1,484	67%	70	3%	1,554	588	26%	87	4%	675	2,229	22,650	86%	781	3%	23,431	2,552	10%	387	1%	2,939	26,370
2002	1,494	71%	61	3%	1,555	462	22%	83	4%	545	2,100	22,811	87%	678	3%	23,489	2,476	9%	391	1%	2,867	26,356
2003	1,527	75%	56	3%	1,583	390	19%	76	4%	466	2,049	23,148	88%	674	3%	23,822	2,205	8%	325	1%	2,530	26,352
2004	1,609	72%	71	3%	1,680	454	20%	97	4%	551	2,231	24,100	86%	859	3%	24,959	2,493	9%	447	2%	2,940	27,899
2005	1,668	73%	77	3%	1,745	447	20%	93	4%	540	2,285	24,848	86%	1,008	4%	25,856	2,424	8%	485	2%	2,909	28,765
2006	1,734	71%	71	3%	1,805	546	22%	77	3%	623	2,428	25,541	86%	821	3%	26,362	3,110	10%	365	1%	3,475	29,837
2007	1,662	70%	72	3%	1,734	560	24%	85	4%	645	2,379	24,321	85%	777	3%	25,098	3,042	11%	381	1%	3,423	28,521
2008	1,666	70%	62	3%	1,728	527	22%	110	5%	637	2,365	24,514	85%	685	2%	25,199	3,011	10%	544	2%	3,555	28,754

d 11 Cr. hrs or less or GR enrolled 8 Cr. Hrs or less.

12 Cr. Hrs or more or GR enrolled 9 Cr. Hrs or more.

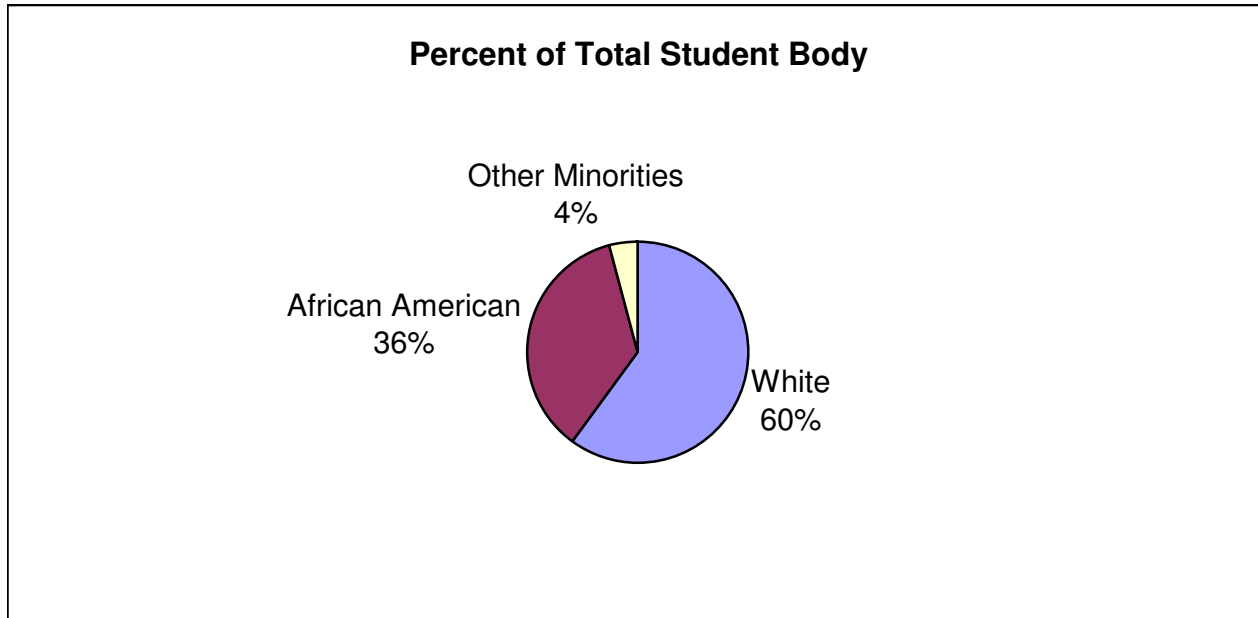
hours data are based on the 10th day of Enrollment.

Table B:5a
Full-time & Part-time Unduplicated Headcount
Fall Terms



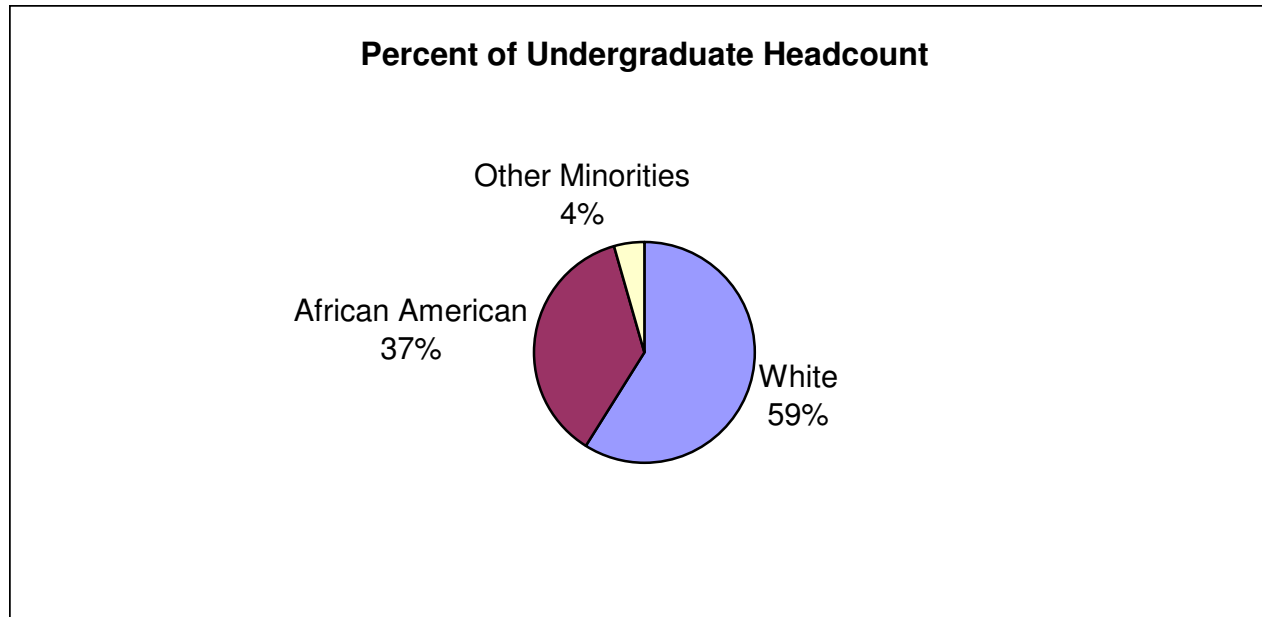
**Table B:6 Unduplicated Enrollment by Ethnicity, Gender, FT/PT
Fall 2008**

Ethnicity	Full-time		Full-time Total	Part-time		Part-time Total	Grand Total
	Female	Male		Female	Male		
African American	528	51	579	240	27	267	846
American Indian	7	2	9	1		1	10
Asian	11	3	14	17	15	32	46
Hispanic	13	4	17	4	2	6	23
Non-resident Alien	15	3	18	1		1	19
White	908	183	1091	239	91	330	1421
Grand Total	1482	246	1728	502	135	637	2365



**Table B:6a Undergraduate, Unduplicated Enrollment by Ethnicity, Gender, FT/PT
Fall 2008**

Ethnicity	Full-time		Full-time Total	Part-time		Part-time Total	Grand Total
	Female	Male		Female	Male		
African American	521	50	571	207	27	234	805
American Indian	7	2	9				9
Asian	11	3	14	17	15	32	46
Hispanic	12	4	16	4	2	6	22
Non-resident Alien	15	3	18	1		1	19
White	861	177	1038	172	82	254	1292
Grand Total	1427	239	1666	401	126	527	2193



**Table B:6b Graduate, Unduplicated Enrollment by Ethnicity, Gender, FT/PT
Fall 2008**

Ethnicity	Full-time		Full-time Total	Part-time		Part-time Total	Grand Total
	Female	Male		Female	Male		
African American	7	1	8	33		33	41
American Indian				1		1	1
Hispanic	1		1				1
White	47	6	53	67	9	76	129
Grand Total	55	7	62	101	9	110	172

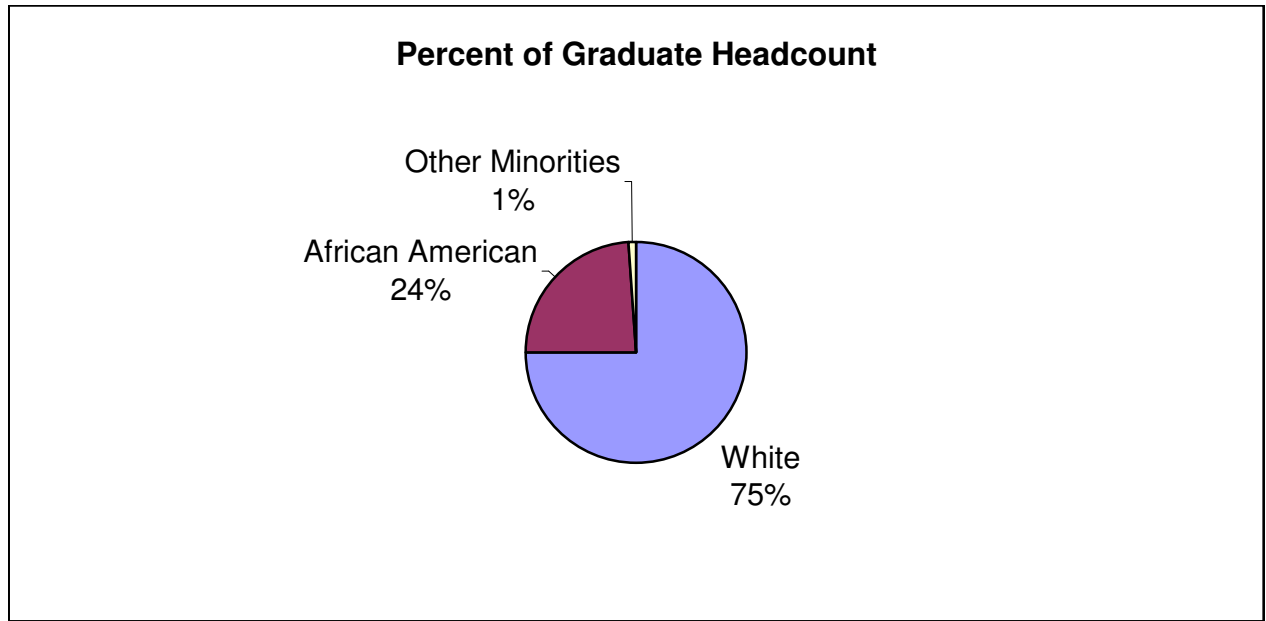


Table B:7
Unduplicated Enrollment by Student Classification
Fall Terms

Fall	Freshman	Sophomore	Junior	Senior	Graduate	Total
1999	563	306	527	1,038	180	2,614
2000	584	321	469	1,035	144	2,553
2001	525	330	403	814	157	2,229
2002	505	317	412	722	144	2,100
2003	454	316	411	736	132	2,049
2004	527	311	476	749	168	2,231
2005	531	339	494	751	170	2,285
2006	606	356	483	835	148	2,428
2007	593	301	533	795	157	2,379
2008	575	296	479	843	172	2,365

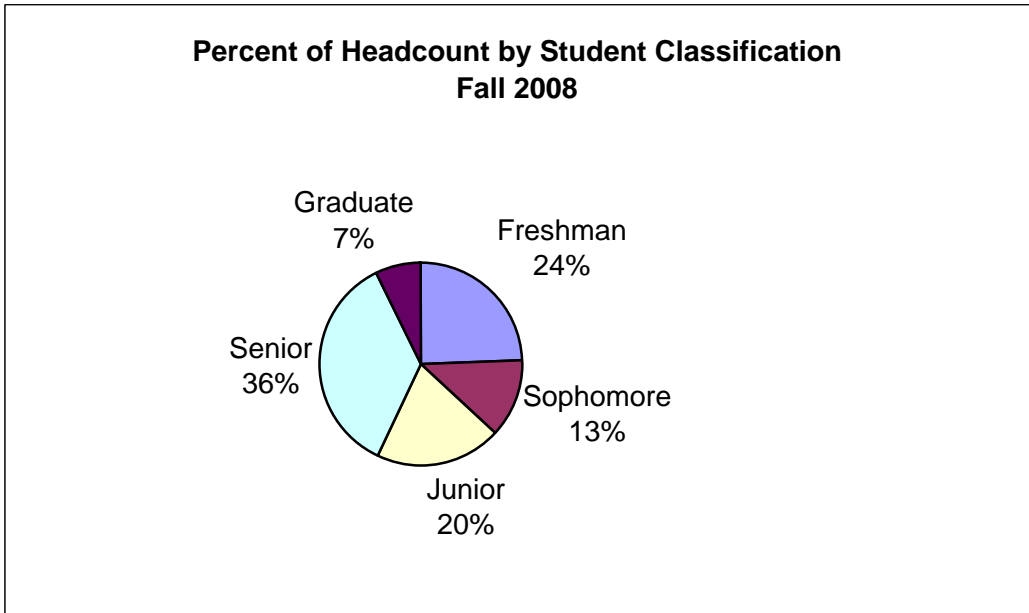
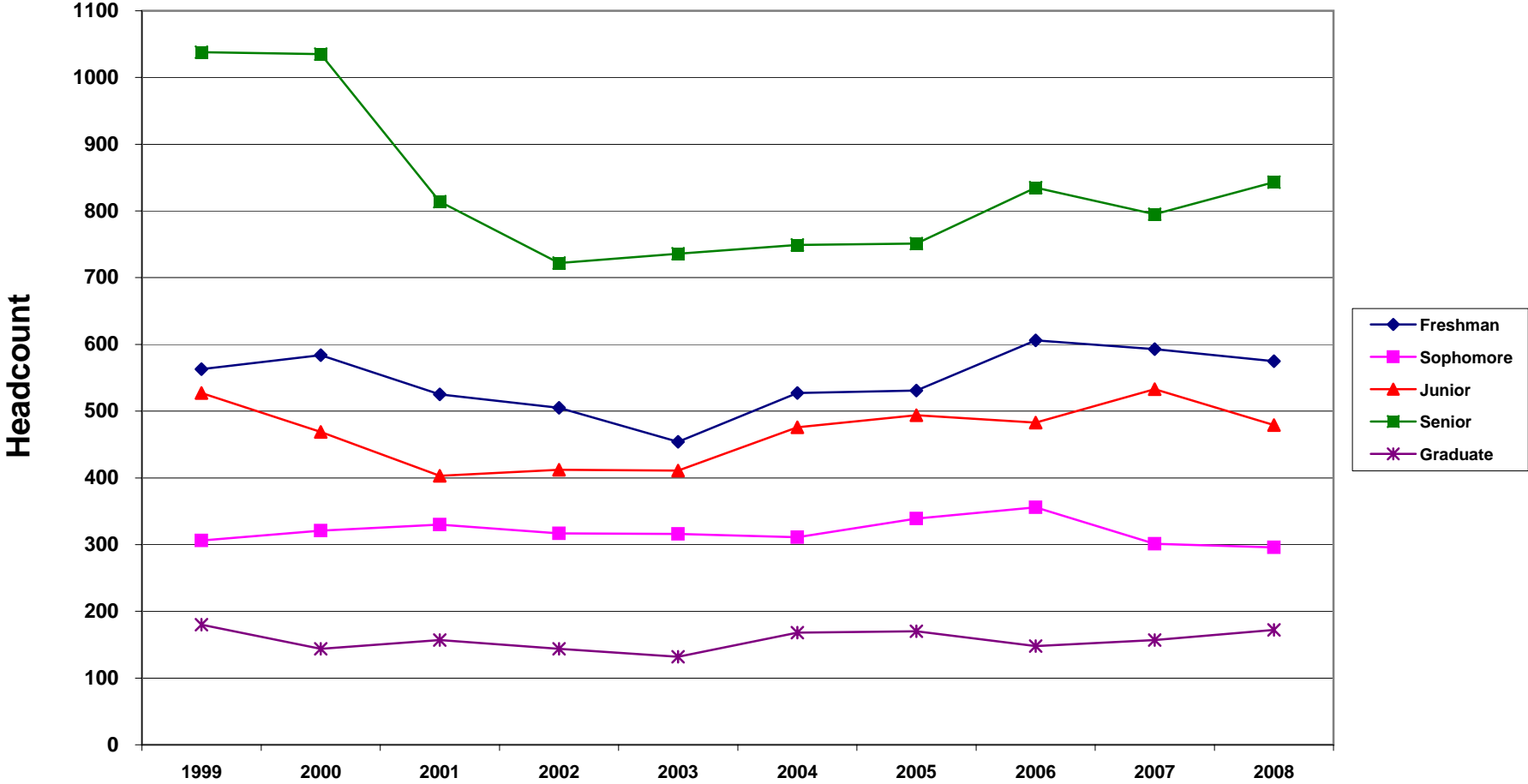


Table B:7a
Unduplicated Enrollment by Student Classification
Fall Terms



**Table B:8 Headcount Enrollment by Credit Hours
& Student Classification
Fall 2008**

Sem Hrs.	Class					Total	%	Cum. %
	FR	GR	JR	SO	SR			
1	3	1		1	14	19	0.80%	0.80%
2		2				2	0.08%	0.89%
3	123	35	5	2	27	192	8.12%	9.01%
4	2		2	2	6	12	0.51%	9.51%
5	1	4			4	9	0.38%	9.89%
6	56	65	24	11	96	252	10.66%	20.55%
7	5		6	5	8	24	1.01%	21.56%
8	2	3	3	1	1	10	0.42%	21.99%
9	7	9	20	10	43	89	3.76%	25.75%
10	4	23	5	1	14	47	1.99%	27.74%
11	2	1	3	1	7	14	0.59%	28.33%
12	37	17	101	60	169	384	16.24%	44.57%
13	54	11	49	44	73	231	9.77%	54.33%
14	93		21	30	23	167	7.06%	61.40%
15	70		115	33	122	340	14.38%	75.77%
16	59	1	51	37	106	254	10.74%	86.51%
17	38		21	22	30	111	4.69%	91.21%
18	11		30	16	60	117	4.95%	96.15%
19	8		22	18	20	68	2.88%	99.03%
20			1	2	5	8	0.34%	99.37%
21					12	12	0.51%	99.87%
22					2	2	0.08%	99.96%
23					1	1	0.04%	100.00%
Total	575	172	479	296	843	2365	100.00%	

**Table B:9 Age Distribution by Student Classification
Unduplicated Headcount**

Age Group	Freshman		Sophomore		Junior		Senior		Graduate		Total	
	FA 2008	FA 2007	FA 2008	FA 2007	FA 2008	FA 2007	FA 2008	FA 2007	FA 2008	FA 2007	FA 2008	FA 2007
Under 18	193	192	0	1	0	0	0	3	0	0	193	196
18 and 19	301	304	76	101	10	7	0	1	0	0	387	413
20 and 21	39	28	122	100	227	280	204	166	2	0	594	574
22 to 24	10	17	31	33	90	95	263	231	34	33	428	409
25 to 29	13	20	21	22	58	50	119	152	48	34	259	278
30 to 34	7	11	13	13	40	34	89	83	29	25	178	166
35 to 39	5	6	18	11	19	31	57	44	25	19	124	111
40 to 49	5	7	13	14	28	27	81	76	26	35	153	159
50 to 64	2	5	2	6	7	9	25	33	8	11	44	64
65 and Over	0	3	0	0	0	0	5	6	0	0	5	9
Unknown	0	0	0	0	0	0	0	0	0	0	0	0
Total	575	593	296	301	479	533	843	795	172	157	2,365	2,379

	2008	2007
Average Age	24.90	25.17
Average Age Men	23.31	23.42
Average Age Women	25.21	25.49

**Table B:10 Non-traditional Students Vs. Traditional Students
Unduplicated Headcount - Fall Terms**

	Non-traditional						Traditional						Both Trad. & Non-trad.	
	FT		PT		Total		FT		PT		Total			Total
	HC	%	HC	%	HC	%	HC	%	HC	%	HC	%		
Fall 1999	401	15.34%	713	27.28%	1114	42.62%	1284	49.12%	216	8.26%	1500	57.38%	2614	
Fall 2000	404	15.82%	711	27.85%	1115	43.67%	1213	47.51%	225	8.81%	1438	56.33%	2553	
Fall 2001	394	17.68%	584	26.20%	978	43.88%	1160	52.04%	91	4.08%	1251	56.12%	2229	
Fall 2002	372	17.71%	368	17.52%	740	35.24%	1183	56.33%	177	8.43%	1360	64.76%	2100	
Fall 2003	405	19.77%	321	15.67%	726	35.43%	1178	57.49%	145	7.08%	1323	64.57%	2049	
Fall 2004	470	21.07%	381	17.08%	851	38.14%	1210	54.24%	170	7.62%	1380	61.86%	2231	
Fall 2005	464	20.31%	357	15.62%	821	35.93%	1281	56.06%	183	8.01%	1464	64.07%	2285	
Fall 2006	459	18.90%	351	14.46%	810	33.36%	1346	55.44%	272	11.20%	1618	66.64%	2428	
Fall 2007	440	18.50%	347	14.59%	787	33.08%	1294	54.39%	298	12.53%	1592	66.92%	2379	
Fall 2008	400	16.91%	363	15.35%	763	32.26%	1328	56.15%	274	11.59%	1602	67.74%	2365	

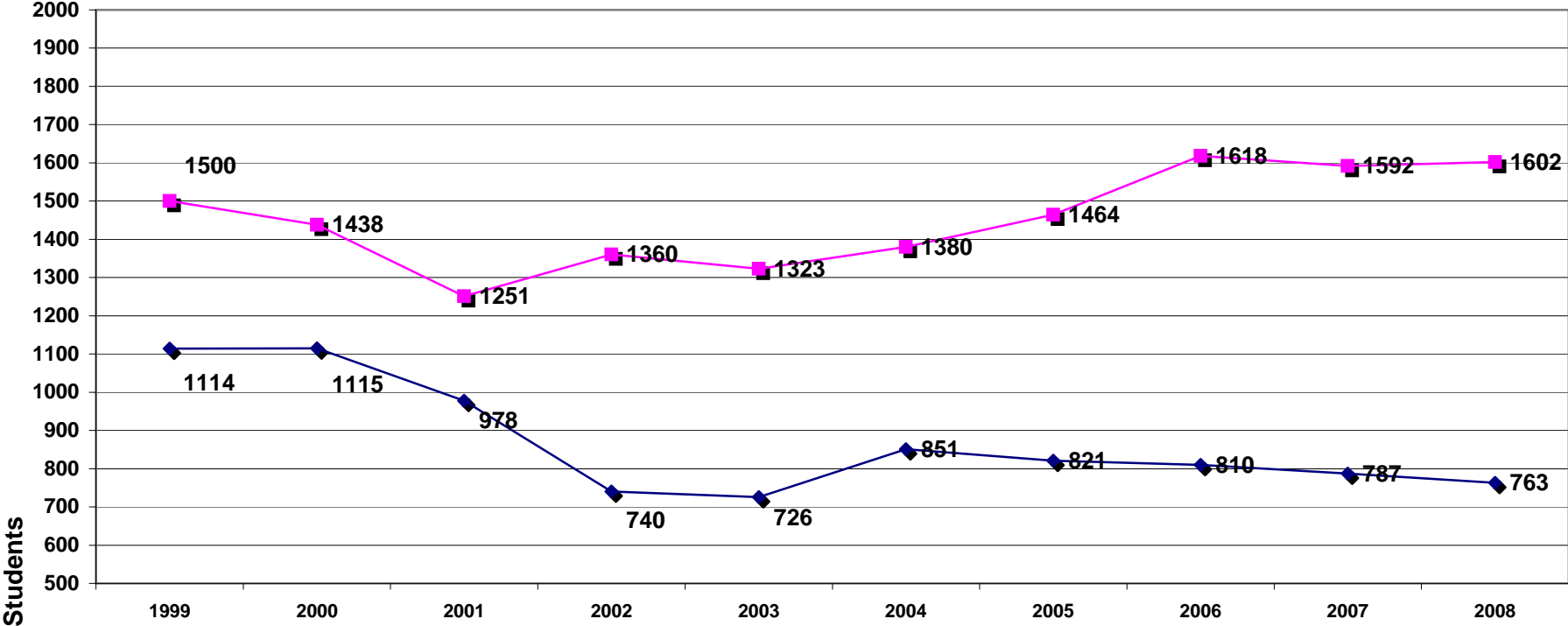
*Non-traditional Students are defined as those who are at least 25 years of age.

**HC = Headcount

*** Part-time is defined as UG enrolled 11 Cr. hrs or less or GR enrolled 8 Cr. Hrs or less

****Full-time is defined as UG enrolled 12 Cr. Hrs or more or GR enrolled 9 Cr. Hrs or more.

Table B:10a
Non-traditional Vs. Traditional Students
Unduplicated Headcount - Fall Terms



*Non-traditional students are defined as those who are 25 or older.
 Traditional students are less than 25 years old.*

Table B:11 Residence Hall Student Headcount

Residence Hall	Fall 99	Fall 00	Fall 01	Fall 02	Fall 03	Fall 04	Fall 05	Fall 06	Fall 07	Fall 08
Callaway	118	111	99	119	103	113	116	94	88	100
Columbus	0	0	0	50	47	58	46	46	51	50
Frazier	49	53	59	0	0	0	0	0	0	0
Goen	150	141	112	53	66	72	35	0	0	0
Grossnickle	37	38	35	40	39	43	35	37	42	42
Hastings-Simmons	42	45	49	49	49	54	51	49	55	52
Jones	138	130	128	133	129	116	105	164	165	176
Kincannon	137	133	115	143	123	144	166	175	163	174
Total	671	651	597	587	556	600	554	565	564	594

Fall 2008 Residence Hall Enrollment by Ethnicity and Gender

Residence Hall	White	Black	Other	Total
Callaway	70	28	2	100
Columbus	34	12	4	50
Goen	0	0	0	0
Grossnickle	32	8	2	42
Hastings-Simmons	37	13	2	52
Jones	52	115	9	176
Kincannon	75	90	9	174
Total	300	266	28	594

Men	Women	Total
0	100	100
50	0	50
0	0	0
4	38	42
0	52	52
0	176	176
35	139	174
89	505	594

Table B:12
Residence Hall Students Vs. Commuter Students
Unduplicated Headcount

	Residence Hall Students		Commuter Students		Total	
	#	%	#	%	#	%
Fall 1999	671	25.67%	1943	74.33%	2614	100%
Fall 2000	651	25.50%	1902	74.50%	2553	100%
Fall 2001	597	26.78%	1632	73.22%	2229	100%
Fall 2002	587	27.95%	1513	72.05%	2100	100%
Fall 2003	556	27.14%	1493	72.86%	2049	100%
Fall 2004	600	26.89%	1631	73.11%	2231	100%
Fall 2005	554	24.25%	1731	75.75%	2285	100%
Fall 2006	565	23.27%	1863	76.73%	2428	100%
Fall 2007	564	23.71%	1815	76.29%	2379	100%
Fall 2008	594	25.12%	1771	74.88%	2365	100%

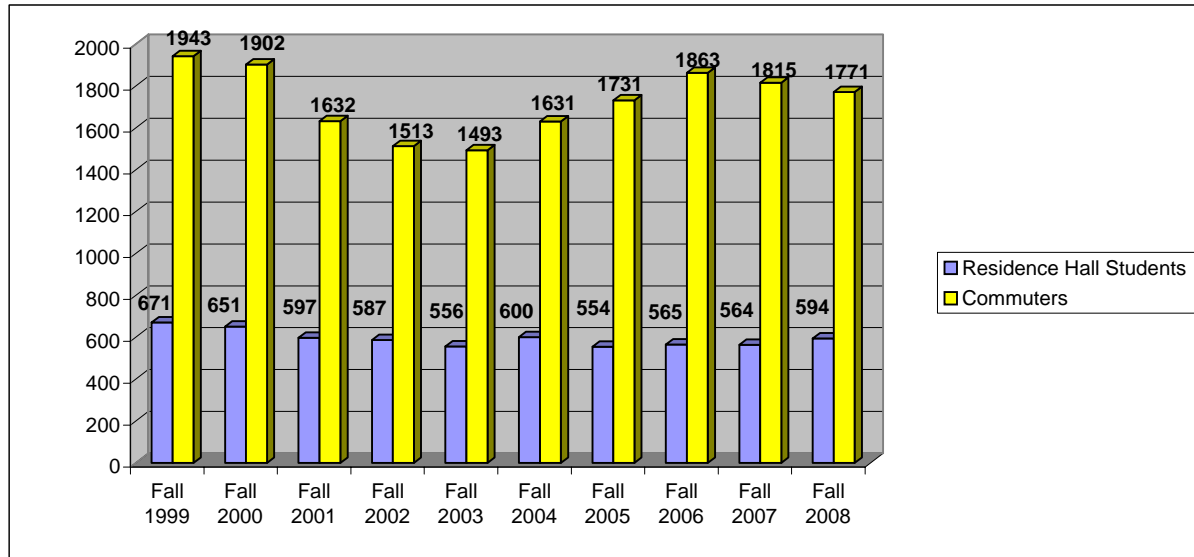


Table B:13 Unduplicated Enrollment by State of Residence Fall 2004-2008

<i>State</i>	<i>2004</i>	<i>2005</i>	<i>2006</i>	<i>2007</i>	<i>2008</i>
Alabama	127	135	122	135	137
American Samoa	0	0	1	1	0
Arizona	0	0	0	0	1
Arkansas	5	6	2	4	3
California	1	2	4	2	2
Connecticut	0	1	0	0	0
Delaware	0	1	0	0	0
Florida	4	4	2	1	3
Georgia	4	6	6	3	4
Hawaii	0	0	1	1	1
Illinois	2	1	0	0	2
Indiana	1	0	1	0	0
Iowa	0	0	0	1	0
Kansas	1	1	1	1	0
Kentucky	4	3	2	3	2
Louisiana	11	11	8	7	9
Maine	0	0	1	2	1
Maryland	0	0	0	1	2
Massachusetts	0	0	0	0	1
Michigan	0	0	1	3	2
Mississippi	1998	2043	2223	2162	2143
Missouri	3	2	1	0	1
New Hampshire	1	0	0	0	0
New Jersey	0	2	0	0	0
New Mexico	1	1	1	0	0
New York	0	0	0	0	1
North Carolina	1	0	0	0	0
Ohio	3	2	2	1	2
Oklahoma	1	3	1	1	2
Oregon	0	0	0	1	0
South Carolina	0	2	1	0	0
Tennessee	19	23	23	20	22
Texas	7	7	3	4	4
U.S. Citizen Residing Outside of U.S.	0	0	0	0	1
Virginia	3	1	1	1	0
Washington	1	0	1	2	2
Wisconsin	2	1	0	0	0
Total U.S. Enrollment	2200	2258	2409	2357	2348

**Table B:14 Unduplicated Enrollment by State of Residence and Classification
Fall 2008**

<i>State</i>	<i>Freshmen</i>	<i>Sophomore</i>	<i>Junior</i>	<i>Senior</i>	<i>Graduate</i>	<i>Total</i>
Alabama	31	23	20	56	7	137
Arizona	0	0	0	1	0	1
Arkansas	0	0	0	2	1	3
California	0	1	0	0	1	2
Florida	0	0	2	0	1	3
Georgia	1	0	1	2	0	4
Hawaii	0	0	0	1	0	1
Illinois	1	0	0	0	1	2
Kentucky	1	0	0	0	1	2
Louisiana	2	0	0	4	3	9
Maine	0	0	0	1	0	1
Maryland	1	0	1	0	0	2
Massachusetts	1	0	0	0	0	1
Michigan	1	0	0	1	0	2
Mississippi	449	216	394	930	154	2143
Missouri	0	0	1	0	0	1
New York	0	0	0	0	1	1
Ohio	1	0	0	1	0	2
Oklahoma	1	1	0	0	0	2
Tennessee	7	5	1	7	2	22
Texas	0	0	1	3	0	4
U.S. Citizen Residing Outside of U.S.	1	0	0	0	0	1
Washington	1	0	1	0	0	2
<i>Total</i>	499	246	422	1009	172	2348
<i>Percent of total</i>	21.25%	10.48%	17.97%	42.97%	7.33%	

**Table B:15 Unduplicated Headcount Enrollment by Country
Fall 2004-2008**

<i>Country</i>	<i>2004</i>	<i>2005</i>	<i>2006</i>	<i>2007</i>	<i>2008</i>
Albania	1	0	0	0	0
Belarus	0	0	0	0	1
Bulgaria	1	2	1	1	0
Cameroon	0	0	0	1	1
China	1	1	0	0	1
Ecuador	0	0	0	0	0
France	0	1	0	0	0
Germany	1	1	0	1	1
Ghana	1	0	0	0	0
Honduras	1	1	1	0	0
India	0	1	0	0	1
Jamaica	1	1	1	1	0
Japan	1	1	2	2	1
Kazakhstan	0	0	0	0	0
Kenya	7	3	0	4	3
Korea, South	0	1	0	0	0
Nigeria	5	4	2	1	1
Peru	1	1	0	0	0
Romania	3	3	2	0	0
Russia	1	0	0	1	1
Taiwan	2	1	2	1	0
Trinidad and Tobago	0	1	1	2	2
Ukraine	2	1	0	0	0
United Kingdom	0	0	0	0	0
Venezuela	0	0	1	1	2
Vietnam	2	2	4	4	2
Zambia	0	1	2	2	0
Foreign Students	31	27	19	22	17
Countries Represented	16	18	11	13	12

**Table B:16 Unduplicated Enrollment by MS County
Fall 2004-2008**

<i>County</i>	<i>2004</i>	<i>2005</i>	<i>2006</i>	<i>2007</i>	<i>2008</i>
Adams	2	3	4	8	8
Alcorn	7	11	11	11	17
Amite	3	2	0	2	1
Attala	15	18	12	10	15
Benton	2	3	7	5	2
Bolivar	7	8	10	11	9
Calhoun	3	12	11	7	11
Carroll	3	3	4	1	3
Chickasaw	38	36	37	41	29
Choctaw	13	13	12	15	18
Claiborne	1	0	1	1	0
Clarke	4	4	6	6	7
Clay	122	121	122	127	121
Coahoma	1	4	3	4	5
Copiah	2	1	4	5	7
Covington	2	0	0	0	2
DeSoto	27	29	42	36	34
Forrest	5	5	8	11	9
Franklin	0	1	0	0	0
George	1	3	2	1	3
Greene	2	0	2	1	2
Grenada	8	8	8	11	15
Hancock	6	8	6	6	8
Harrison	30	26	37	33	21
Hinds	48	51	59	50	50
Holmes	8	6	3	1	6
Humphreys	1	1	2	2	4

<i>County</i>	<i>2004</i>	<i>2005</i>	<i>2006</i>	<i>2007</i>	<i>2008</i>
Issaquena	1	1	0	0	0
Itawamba	11	17	22	21	16
Jackson	39	37	48	40	35
Jasper	5	6	5	2	3
Jefferson	1	0	0	0	0
Jefferson Davis	2	2	2	4	5
Jones	4	7	9	7	5
Kemper	6	13	7	10	9
Lafayette	5	5	8	11	19
Lamar	9	4	5	10	12
Lauderdale	11	20	27	16	11
Lawrence	0	1	2	0	1
Leake	3	7	11	10	8
Lee	64	64	64	70	76
Leflore	8	5	11	12	15
Lincoln	3	3	3	6	4
Lowndes	846	847	842	839	787
Madison	22	35	48	31	49
Marion	0	0	2	3	4
Marshall	5	5	9	12	18
Monroe	163	152	169	159	171
Montgomery	4	2	4	5	9
Neshoba	18	13	17	19	17
Newton	7	9	12	12	12
Noxubee	57	68	100	83	66
Oktibbeha	124	127	146	133	125
Panola	7	8	7	7	9
Pearl River	9	12	13	6	6
Perry	1	1	1	1	2
Pike	4	3	5	6	1

<i>County</i>	<i>2004</i>	<i>2005</i>	<i>2006</i>	<i>2007</i>	<i>2008</i>
Pontotoc	11	13	17	12	14
Prentiss	10	8	9	13	14
Quitman	2	2	1	2	2
Rankin	31	32	30	38	41
Scott	4	4	6	10	7
Sharkey	0	0	1	1	1
Simpson	1	0	0	5	6
Smith	2	2	1	0	1
Stone	1	1	0	0	0
Sunflower	9	5	4	6	7
Tallahatchie	3	3	4	1	1
Tate	4	2	5	6	7
Tippah	6	8	6	5	6
Tishomingo	4	3	10	11	9
Tunica	2	0	0	1	1
Union	7	14	16	11	10
Walthall	1	0	0	0	0
Warren	7	12	8	7	12
Washington	27	18	24	20	19
Wayne	3	4	6	6	3
Webster	23	13	12	17	15
Wilkinson	1	0	2	2	2
Winston	29	36	37	37	51
Yalobusha	1	5	4	1	3
Yazoo	9	7	8	9	9
<i>Total MS Enrollment</i>	1998	2043	2223	2162	2143
<i># Represented</i>	78	72	73	74	76

**Table C:1 Enrollment by Major and Program Type
Unduplicated Headcount - Fall 2004-2008**

	2004	2005	2006	2007	2008	5 Year	5 Year
	Total	Total	Total	Total	Total	# Change	%Change
Arts & Sciences	504	482	492	467	422	-82	-16.27%
Art Education	19	19	21	17	21	2	10.53%
Biology	66	74	82	70	57	-9	-13.64%
Biology-Teacher Certification	6	6	9	14	9	3	50.00%
Chemistry	10	11	8	16	17	7	70.00%
Communication	72	48	50	47	48	-24	-33.33%
Communication - Broadcasting*	1	0	0	0	0	-1	-100.00%
English	32	39	55	40	35	3	9.38%
English - Creative Writing	2	1	1	4	5	3	150.00%
English-Teacher Certification	22	16	14	13	18	-4	-18.18%
Fine Art	4	4	10	3	5	1	25.00%
Graphic Design	19	18	23	25	36	17	89.47%
History	16	20	19	19	15	-1	-6.25%
History-Teacher Certification	8	8	10	6	14	6	75.00%
Interior Design*	29	24	17	7	3	-26	-89.66%
Mathematics	19	15	13	14	12	-7	-36.84%
Mathematics - Teacher Cert	13	10	9	1	3	-10	-76.92%
Microbiology*	13	13	9	11	9	-4	-30.77%
Music	3	3	6	4	2	-1	-33.33%
Music - Commercial*	3	0	0	0	0	-3	-100.00%
Music Education	8	10	10	15	15	7	87.50%
Music Therapy	10	10	13	10	12	2	20.00%
Paralegal Studies**	53	56	36	50	0	-53	-100.00%
Physical Science*	1	0	0	0	0	-1	-100.00%
Physical Science-Teacher Cert	1	1	0	0	1	0	0.00%
Political Science	16	20	12	14	12	-4	-25.00%
Social Sciences	15	12	21	19	19	4	26.67%
Social Sciences - Teacher Cert	14	14	14	7	8	-6	-42.86%
Spanish	4	4	2	4	6	2	50.00%
Spanish - Teaching	1	0	0	1	3	2	200.00%
Studio Art	16	13	16	17	18	2	12.50%
Theatre	8	13	12	19	19	11	137.50%

2004	2005	2006	2007	2008	5 Year	5 Year
Total	Total	Total	Total	Total	# Change	%Change

<i>Business and Legal Studies</i>	220	214	205	202	265	45	20.45%
Accounting	71	76	67	57	53	-18	-25.35%
Business Admin - General Bus	42	38	45	66	73	31	73.81%
Business Admin - IRM*	1	0	0	0	0	-1	-100.00%
Business Admin - Management	35	34	30	22	31	-4	-11.43%
Business Admin - Marketing	25	27	25	19	26	1	4.00%
Business Admin - MIS	45	39	38	38	32	-13	-28.89%
Business Admin - Office Admin*	1	0	0	0	0	-1	-100.00%
Business Admn-Entrepreneurship	0	0	0	0	1	1	100.00%
Legal Studies**	0	0	0	0	49	49	100.00%

<i>Culinary Arts</i>	75	96	108	101	92	17	22.67%
Culinary Arts	72	96	108	101	92	20	27.78%
Culinary Arts Certificate*	3	0	0	0	0	-3	-100.00%

<i>Education & Human Sciences</i>	564	601	629	628	630	66	11.70%
Differentiated Instruction	1	8	5	7	10	9	900.00%
Education - MAT	15	23	18	9	8	-7	-46.67%
Educational Leadership	0	0	0	0	11	11	100.00%
Elementary Education	248	269	272	277	304	56	22.58%
Exercise Sci-Physical Therapy	19	24	43	37	37	18	94.74%
Family Studies	77	86	87	83	56	-21	-27.27%
Family Studies - Teaching	4	5	4	7	8	4	100.00%
Gifted Studies	7	10	10	13	12	5	71.43%
Health Education	40	37	38	43	47	7	17.50%
Instructional Management*	9	2	1	0	0	-9	-100.00%
Kinesiology - Sport Management*	6	9	4	1	0	-6	-100.00%
Kinesiology - Teaching	5	4	13	18	21	16	320.00%
Kinesiology-Exercise Science	28	22	23	25	21	-7	-25.00%
Pre-Occupational Therapy	3	6	2	4	3	0	0.00%
Psychology	75	78	95	88	82	7	9.33%
Reading/Literacy	27	18	14	16	10	-17	-62.96%

<i>Graduate Unclassified</i>	4	1	8	9	11	7	175.00%
Unclassified - Graduate	4	1	8	9	11	7	175.00%

<i>2004</i>	<i>2005</i>	<i>2006</i>	<i>2007</i>	<i>2008</i>	<i>5 Year</i>	<i>5 Year</i>
<i>Total</i>	<i>Total</i>	<i>Total</i>	<i>Total</i>	<i>Total</i>	<i># Change</i>	<i>%Change</i>

<i>Nursing & Speech Language Pathology</i>	550	583	575	579	606	56	10.18%
Associate of Science Nursing	121	114	112	102	105	-16	-13.22%
Bachelor of Science Nursing	103	107	115	120	127	24	23.30%
Master of Science Nursing	39	43	34	41	38	-1	-2.56%
Nursing - BSN - Tupelo	39	37	39	38	52	13	33.33%
Post Masters Certificate Nursing	0	0	2	1	4	4	100.00%
Pre-Nursing ASN	70	72	72	82	80	10	14.29%
Pre-Nursing BSN	116	131	131	131	127	11	9.48%
Pre-Nursing BSN - Tupelo	1	4	0	0	0	-1	-100.00%
Speech/Language Pathology	35	47	52	46	52	17	48.57%
Speech/Language Pathology - MS	26	28	18	18	21	-5	-19.23%

<i>University</i>	314	308	411	393	339	25	7.96%
Undeclared - Undergraduate	314	308	411	393	339	25	7.96%
<i>University Total</i>	2231	2285	2428	2379	2365	134	6.01%

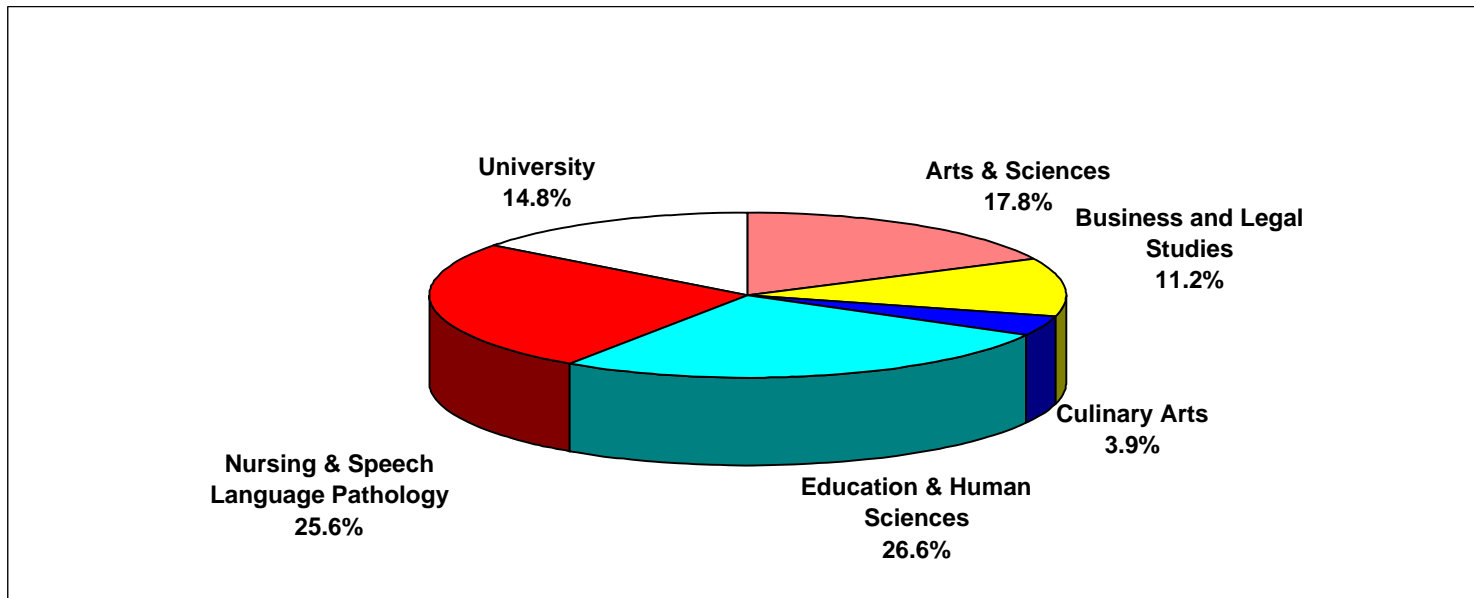
** These programs are being phased out.*

*** Paralegal Studies became Legal Studies and moved to the College of Business and Legal Studies.*

Table C:2 Unduplicated Headcount Enrollment by College

Fall 2006 - Fall 2008

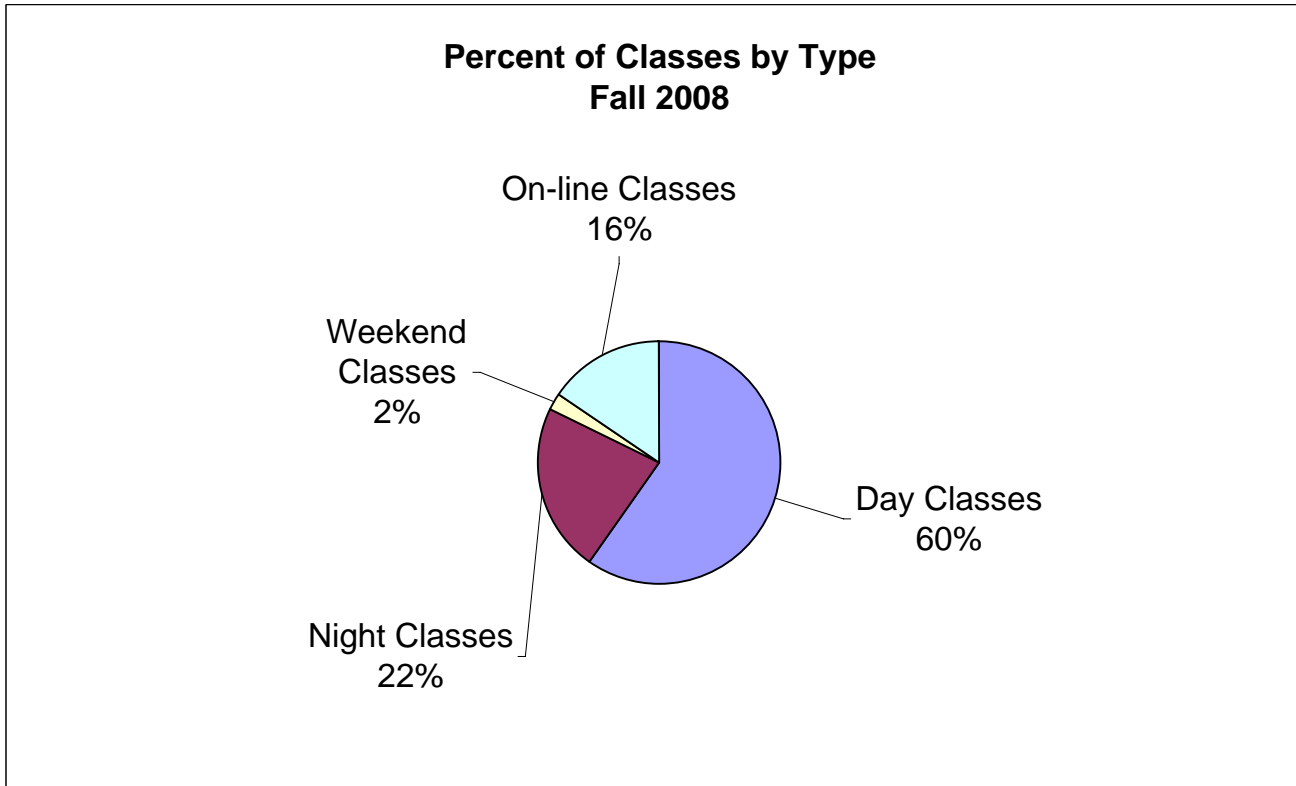
College	Fall 2006		Fall 2007		Fall 2008	
	# Students	% of Total	# Students	% of Total	# Students	% of Total
Arts & Sciences	492	20.26%	467	19.63%	422	17.84%
Business and Legal Studies	205	8.44%	202	8.49%	265	11.21%
Culinary Arts	108	4.45%	101	4.25%	92	3.89%
Education & Human Sciences	629	25.91%	628	26.40%	630	26.64%
Nursing & Speech Language Pathology	575	23.68%	579	24.34%	606	25.62%
University	419	17.26%	402	16.90%	350	14.80%
Total	2428	100%	2379	100%	2365	100%



**Table C:3
Class Type Enrollment**

	Fall 2001	Fall 2002	Fall 2003	Fall 2004	Fall 2005	Fall 2006	Fall 2007	Fall 2008
Day Classes	2040	1848	1821	1962	2082	2150	2102	2047
Night Classes	1040	1119	950	1055	1071	929	873	769
Weekend Classes	73	70	99	113	112	51	107	74
On-line Classes	66	57	160	223	290	332	412	538

*Students may be enrolled in more than one class type, but headcount is unduplicated within class type.



Mississippi University for Women
Table C:4 Credit Hour Generation by College & Department
AY 2008 - SU 08

Program	SU 07	FA 07	SP 08	07-08 Total	SU 08
Art & Design	102	1149	1158	2409	60
Communication	75	774	851	1700	108
History, Political Science, Geography, & Paralegal	345	2085	2055	4485	423
Languages, Literature, & Philosophy	722	3501	3133	7356	666
Music & Theatre	65	753	803	1621	90
Science & Mathematics	726	4417	3756	8899	720
Arts & Sciences College Total	2035	12679	11756	26470	2067
Accounting & MIS	249	1296	1134	2679	246
Business Administration	345	819	870	2034	153
Business College Total	594	2115	2004	4713	399
Culinary Arts Total	135	872	903	1910	190
Education	732	2529	2268	5529	900
Health & Kinesiology	302	1291	219	1812	165
Health Education	204	216	1427	1847	342
Psychology & Family Studies	405	2470	2202	5077	348
Education & Human Sciences College Total	1643	6506	6116	14265	1755
Associate of Science in Nursing	117	1074	874	2065	120
Bachelor of Science in Nursing	786	2238	2295	5319	846
Master of Science in Nursing	437	457	264	1158	449
Nursing	197	111	153	461	195
Speech/Language Pathology	83	592	450	1125	80
Nursing & Speech/Language Pathology College Total	1620	4472	4036	10128	1690
University Classes	18	442	203	663	42
Honors	370	140	118	628	164
Total University and Honors	388	582	321	1291	206
Totals	6415	27226	25136	58777	6307

*ROTC Classes are excluded

Mississippi University for Women
Table C:4 Credit Hour Generation by College & Department
AY 2006 - AY 2007

Program	SU 05	FA 05	SP 06	05-06 Total	SU 06	FA 06	SP 07	06-07 Total
Art & Design	12	1221	1095	2328	116	1215	1136	2467
Communication	189	852	693	1734	84	912	813	1809
History, Political Science, Geography, & Paralegal	683	2481	2262	5426	420	2637	2310	5367
Languages, Literature, & Philosophy	1018	3441	3369	7828	895	3506	3346	7747
Music & Theatre	56	803	806	1665	57	887	838	1782
Science & Mathematics	1085	4168	3763	9016	575	4517	4063	9155
Arts & Sciences College Total	3043	12966	11988	27997	2147	13674	12506	28327
Accounting & MIS	306	1236	1239	2781	237	1380	1158	2775
Business Administration	201	1134	1206	2541	396	1041	1044	2481
Business College Total	507	2370	2445	5322	633	2421	2202	5256
Culinary Arts Total	193	744	875	1812	159	754	909	1822
Education	765	2514	2277	5556	804	2598	2490	5892
Health & Kinesiology	260	1300	1399	2959	281	1455	1349	3085
Health Education	195	219	194	608	207	237	264	708
Psychology & Family Studies	601	2511	2700	5812	438	2791	2607	5836
Education & Human Sciences College Total	1821	6544	6570	14935	1730	7081	6710	15521
Associate of Science in Nursing	63	1039	1071	2173	116	1175	1020	2311
Bachelor of Science in Nursing	1020	2041	1917	4978	708	2325	2075	5108
Master of Science in Nursing	521	550	615	1686	505	433	401	1339
Nursing	100	166	128	394	268	95	127	490
Speech/Language Pathology	134	721	507	1362	49	621	515	1185
Nursing & Speech/Language Pathology College Total	1838	4517	4238	10593	1646	4649	4138	10433
University Classes	15	450	207	672	12	412	154	578
Honors	392	142	138	672	327	143	131	601
Total University and Honors	407	592	345	1344	339	555	285	1179
Totals	7809	27733	26461	62003	6654	29134	26750	62538

*ROTC Classes are excluded

Mississippi University for Women
Table C:4 Credit Hour Generation by College & Department
AY 2004 - AY 2005

Program	Su 03	Fall 03	Spring 04	03-04 Total	Su 04	Fall 04	Spring 05	04-05 Total
Art & Design	42	1233	1338	2613	102	1233	1176	2511
Communication	135	971	923	2029	193	1019	958	2170
History, Political Science, Geography, & Paralegal	474	1905	2031	4410	501	2193	2385	5079
Languages, Literature, & Philosophy	1013	3132	3108	7253	1094	3159	3074	7327
Music & Theatre	98	785	860	1743	120	796	882	1798
Science & Mathematics	818	3628	3922	8368	842	4162	4166	9170
Arts & Sciences College Total	2580	11654	12182	26416	2852	12562	12641	28055
Accounting & MIS	66	1239	896	2201	186	1107	1212	2505
Business Administration	249	1275	1209	2733	249	1089	1047	2385
Business College Total	315	2514	2105	4934	435	2196	2259	4890
Culinary Arts Total	72	585	702	1359	151	728	709	1588
Education	630	2,337	2,154	5121	618	2,457	2,547	5622
Health & Kinesiology	247	1,138	1,238	2623	141	1,198	1,155	2494
Health Education	45	66	138	249	298	189	231	718
Psychology & Family Studies	574	2,244	2,322	5140	618	2,413	2,675	5706
Education & Human Sciences College Total	1496	5785	5852	13133	1675	6257	6608	14540
Associate of Science in Nursing	109	1,197	1,111	2417	102	1,115	1,082	2299
Bachelor of Science in Nursing	627	1,848	1,850	4325	847	2,166	1,796	4809
Master of Science in Nursing	391	407	392	1190	305	484	540	1329
Nursing	17	253	46	316	85	109	4	198
Speech/Language Pathology	79	565	526	1170	115	667	538	1320
Nursing & Speech/Language Pathology College Total	1223	4270	3925	9418	1454	4541	3960	9955
University Classes	2	334	103	439	18	475	203	696
Honors	309	136	130	575	353	115	107	575
Total University and Honors	311	470	233	1,014	371	590	310	1,271
Totals	5,997	25278	24999	56274	6938	26874	26487	60,299

Table C5: University Grade Distribution By College and Department Fall 2008

College	Department	UG/GR	A		B		C		D		F		Other							Other Total		Total	
			#	%	#	%	#	%	#	%	#	%	AU	I	NA	NC	P	W	WF	WP	#		%
Arts & Sciences	Communication	UG	122	51%	65	27%	30	13%	9	4%	6	3%	0	0	0	0	0	0	0	6	6	3%	238
	History, Political Science and Geography	UG	102	18%	170	31%	124	22%	46	8%	80	14%	0	0	1	0	0	5	4	25	35	6%	557
	Languages, Literature and Philosophy	UG	329	29%	338	29%	226	20%	54	5%	61	5%	5	3	1	73	0	26	17	19	144	13%	1152
	Music and Theatre	UG	172	51%	78	23%	30	9%	9	3%	25	7%	1	2	0	0	0	4	1	14	22	7%	336
	Science and Mathematics	UG	294	19%	339	22%	333	22%	166	11%	212	14%	2	5	2	4	44	26	7	76	166	11%	1510
	Art and Design	UG	165	44%	99	26%	43	11%	14	4%	35	9%	2	1	0	0	0	8	3	6	20	5%	376
	Total			1184	28%	1089	26%	786	19%	298	7%	419	10%	10	11	4	77	44	69	32	146	393	9%
Business and Legal Studies	Accounting and MIS	UG	138	35%	93	24%	66	17%	26	7%	37	9%	5	0	0	0	0	9	3	13	30	8%	390
	Business Admin. and Legal Studies	UG	197	35%	176	31%	95	17%	26	5%	43	8%	2	0	1	0	0	7	4	11	25	4%	562
	Total		335	35%	269	28%	161	17%	52	5%	80	8%	7	0	1	0	0	16	7	24	55	6%	952

* excludes MSMS sections and ROTC courses

Table C5: University Grade Distribution By College and Department Fall 2008

College	Department	UG/GR	A		B		C		D		F		Other							Other Total		Total	
			#	%	#	%	#	%	#	%	#	%	AU	I	NA	NC	P	W	WF	WP	#		%
Culinary Arts	Culinary Arts Institute	UG	128	41%	59	19%	22	7%	2	1%	15	5%	5	2	0	0	71	1	1	6	86	28%	312
	Total		128	41%	59	19%	22	7%	2	1%	15	5%	5	2	0	0	71	1	1	6	86	28%	312
Education & Human Sciences	Health and Kinesiology	UG	533	64%	172	21%	57	7%	8	1%	33	4%	4	0	0	0	0	7	5	12	28	3%	831
	Education	GR	68	74%	9	10%	6	7%	1	1%	0	0%	0	2	0	0	0	1	0	5	8	9%	92
	Health Education	GR	50	55%	21	23%	4	4%	2	2%	4	4%	0	5	0	0	0	1	0	4	10	11%	91
	Psychology and Family Studies	UG	177	28%	201	32%	115	18%	47	7%	55	9%	0	0	0	0	0	15	2	16	33	5%	628
	Education	UG	476	63%	152	20%	54	7%	18	2%	32	4%	0	0	0	0	0	14	1	14	29	4%	761
	Total		1304	54%	555	23%	236	10%	76	3%	124	5%	4	7	0	0	0	38	8	51	108	4%	2403

* excludes MSMS sections and ROTC courses

Table C5: University Grade Distribution By College and Department Fall 2008

College	Department	UG/GR	A		B		C		D		F		Other								Other Total		Total
			#	%	#	%	#	%	#	%	#	%	AU	I	NA	NC	P	W	WF	WP	#	%	
Nursing & Speech Language Pathology	Associate Nursing	UG	177	40%	117	27%	96	22%	17	4%	1	0%	5	0	0	0	0	7	3	17	32	7%	440
	Baccalaureate Nursing	UG	208	28%	190	25%	131	17%	27	4%	7	1%	0	2	0	0	171	9	1	5	188	25%	751
	Graduate Nursing	GR	94	75%	21	17%	4	3%	1	1%	0	0%	0	0	0	0	0	5	0	0	5	4%	125
	Nursing	UG	104	76%	22	16%	3	2%	1	1%	1	1%	0	0	0	0	0	3	0	3	6	4%	137
	Speech-Language Pathology	UG	81	51%	37	23%	18	11%	6	4%	6	4%	1	0	0	0	0	6	0	3	10	6%	158
		GR	31	38%	45	56%	1	1%	0	0%	0	0%	0	0	0	0	0	0	0	4	4	4	5%
Total			695	41%	432	26%	253	15%	52	3%	15	1%	6	2	0	0	171	30	4	32	245	14%	1692
University	University Classes	UG	245	60%	43	11%	25	6%	17	4%	33	8%	0	0	0	0	33	6	1	6	46	11%	409
	Honors	UG	17	20%	4	5%	0	0%	0	0%	0	0%	0	1	0	0	59	0	0	2	62	75%	83
	Total		262	53%	47	10%	25	5%	17	3%	33	7%	0	1	0	0	92	6	1	8	108	22%	492
Total			3908	39%	2451	24%	1483	15%	497	5%	686	7%	32	23	5	77	378	160	53	267	995	10%	10020

* excludes MSMS sections and ROTC courses

Table C:6 Degrees Granted by Major, Ethnicity and Gender, Academic Year 2008

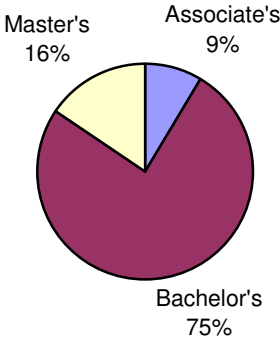
			White		Black		Hispanic	Non-resident Alien		American Indian/Alaskan Native	Asian or Pacific Islander	Total
Major	CIP		Men	Women	Men	Women	Women	Men	Women	Women	Women	
Arts & Sciences	Art Teacher Education	131302	0	4	0	0	0	0	0	0	0	4
	Biology, General	260101	4	12	0	2	1	0	1	1	1	22
	Communication, General	090101	1	5	1	2	0	0	0	0	1	10
	English Language & Literature, General	230101	2	8	0	1	0	0	0	0	1	12
	History, General	540101	1	4	0	1	0	0	0	0	0	6
	Mathematics	270101	1	1	0	0	0	0	0	0	0	2
	Music Teacher Education	131312	0	3	0	0	0	0	0	0	0	3
	Music Therapy	512305	0	1	0	0	0	0	0	0	0	1
	Music, General	500901	1	1	0	0	0	0	0	0	0	2
	Paralegal/Legal Assistant	220302	1	2	0	2	0	0	0	0	0	5
	Political Science, General	451001	0	1	0	0	0	0	0	0	0	1
	Social Sciences, General	450101	1	2	0	4	0	0	0	0	1	8
	Spanish Language & Literature	160905	1	0	0	0	0	0	0	0	0	1
Visual & Performing Arts	500101	1	7	0	0	0	0	0	0	0	8	
Arts & Sciences Total			14	51	1	12	1	0	1	1	4	85
Business	Accounting	520301	6	7	0	1	0	1	1	0	0	16
	Business Administration & Mgt., General	520201	5	6	0	10	0	1	1	0	0	23
Business Total			11	13	0	11	0	2	2	0	0	39
Culinary Arts	Culinary Arts	120599	7	12	0	0	0	0	0	0	0	19
Culinary Arts Total			7	12	0	0	0	0	0	0	0	19

Table C:6 Degrees Granted by Major, Ethnicity and Gender, Academic Year 2008

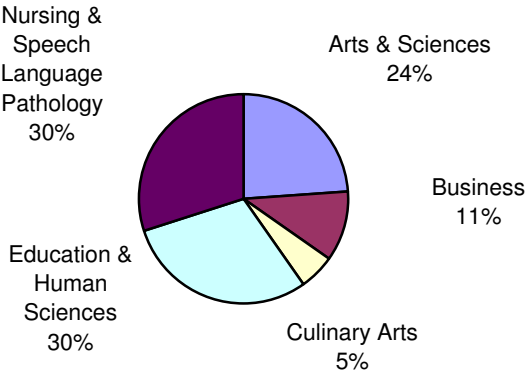
			White		Black		Hispanic	Non-resident Alien		American Indian/Alaskan Native	Asian or Pacific Islander	Total
Major	CIP		Men	Women	Men	Women	Women	Men	Women	Women	Women	
Education & Human Sciences	Curriculum & Instruction - Master's	130301	0	2	1	2	0	0	0	0	0	5
	Educ. of the Gifted & Talented - Master's	131004	1	4	0	0	0	0	0	0	0	5
	Elementary Teacher Education	131202	0	36	0	4	0	0	1	0	0	41
	Family Life & Relations Studies	190704	1	8	1	15	0	0	0	0	0	25
	Health & Physical Education, General	310501	3	8	1	1	0	0	0	0	0	13
	Health Teacher Education - Master's	131307	0	11	0	7	0	0	0	0	0	18
	Psychology, General	420101	0	16	1	10	0	0	0	0	0	27
	Reading Literacy Education - Master's	131315	0	4	0	2	0	0	0	0	0	6
	Secondary Teacher Education - Master's	131205	2	1	0	0	0	0	0	0	0	3
Education & Human Sciences Total			7	90	4	41	0	0	1	0	0	143
Nursing & Speech Language Pathology	Nursing (RN Training) - ASN	511601	3	28	1	8	0	0	0	0	0	40
	Nursing (RN Training) - BSN	511601	9	73	1	7	2	0	0	0	2	94
	Nursing (RN Training) - MSN	511601	3	21	1	4	0	0	0	0	0	29
	Speech-Language Pathology - Bachelor's	510203	0	12	0	1	0	0	0	0	0	13
	Speech-Language Pathology - Master's	510203	0	7	0	0	0	0	0	0	0	7
Nursing & Speech Language Pathology Total			15	141	3	20	2	0	0	0	2	183
Total			54	307	8	84	3	2	4	1	6	469

Table C:6a Degrees Award Academic Year 2008

Degrees Granted



Bachelor's Degrees by College & Institute



Most Popular Bachelor's Degrees

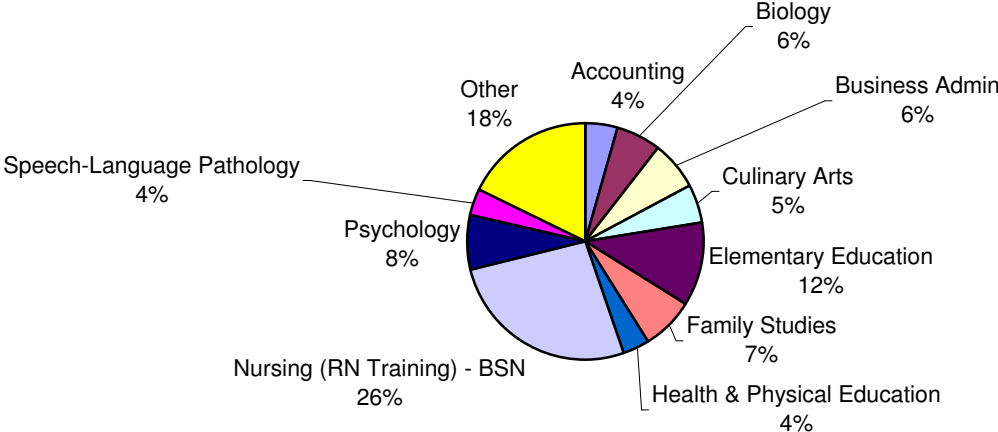


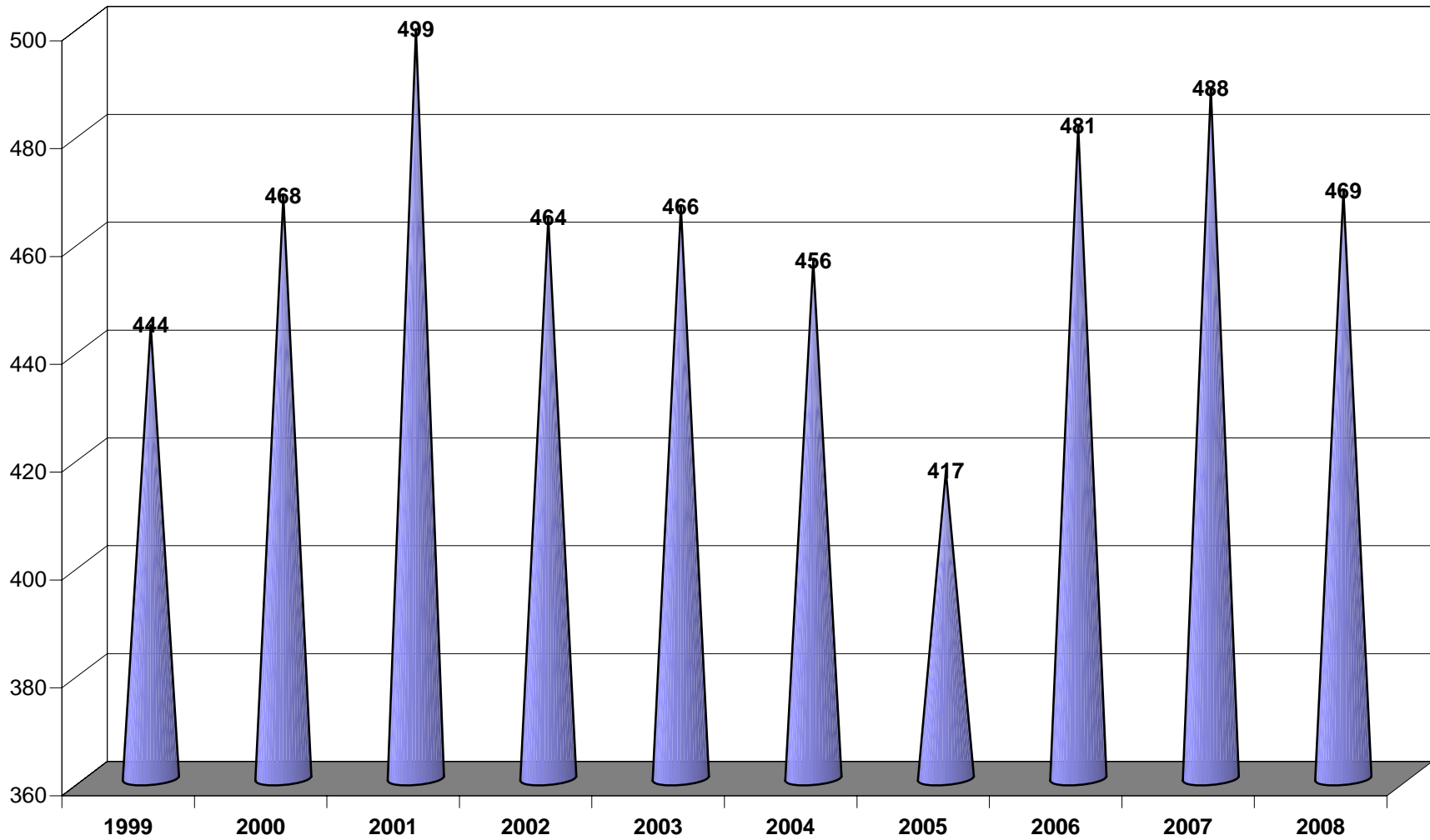
Table C:7 History of Degrees Granted by Major and Gender

			2004		2005		2006		2007		2008		Total
Major	CIP		Women	Men	Women	Men	Women	Men	Women	Men	Women	Men	
Arts & Sciences	Art Teacher Education	131302	2	2	4	1	2	0	3	0	4	0	18
	Biology, General	260101	8	0	4	0	7	1	7	2	18	4	51
	Chemistry, General	400501	0	1	2	1	1	0	0	0	0	0	5
	Communication, General	090101	13	2	15	3	11	2	9	5	8	2	70
	English Language & Literature, General	230101	21	2	10	1	10	3	13	3	10	2	75
	History, General	540101	1	1	0	5	6	0	2	1	5	1	22
	Mathematics	270101	5	1	3	1	0	0	5	2	1	1	19
	Microbiology/Bacteriology	260503	2	1	3	2	5	0	3	0	0	0	16
	Music Teacher Education	131312	2	1	1	0	2	0	0	1	3	0	10
	Music Therapy	512305	0	0	1	0	2	0	1	0	1	0	5
	Music, General	500901	2	3	1	5	2	1	1	0	1	1	17
	Paralegal/Legal Assistant	220103	13	0	9	2	0	0	0	0	0	0	24
		220302	0	0	0	0	15	1	12	2	4	1	35
	Physical Science, General	400101	2	0	1	0	0	0	0	0	0	0	3
	Political Science, General	451001	1	1	1	1	7	0	2	0	1	0	14
	Social Sciences, General	450101	3	3	8	0	11	2	12	3	7	1	50
	Spanish Language & Literature	160905	1	0	2	0	0	0	2	0	0	1	6
Visual & Performing Arts	500101	11	6	11	1	17	5	13	1	7	1	73	
Arts & Sciences Total			87	24	76	23	98	15	85	20	70	15	513
Business	Accounting	520301	13	5	10	2	17	3	18	0	9	7	84
	Business Administration & Mgt., General	520201	19	5	30	8	18	7	16	5	17	6	131
Business Total			32	10	40	10	35	10	34	5	26	13	215

Table C:7 History of Degrees Granted by Major and Gender

			2004		2005		2006		2007		2008		Total
Major	CIP		Women	Men	Women	Men	Women	Men	Women	Men	Women	Men	
Culinary Arts	Culinary Arts	120599	7	2	9	2	6	2	10	6	12	7	63
Culinary Arts Total			7	2	9	2	6	2	10	6	12	7	63
Education & Human Sciences	Curriculum & Instruction - Master's	130301	5	0	8	0	2	1	0	0	4	1	21
	Educ. Of the Gifted & Talented - Master's	131004	8	0	2	1	3	0	5	0	4	1	24
	Elementary Teacher Education	131202	52	1	42	0	42	4	61	1	41	0	244
	Family Life & Relations Studies	190704	31	0	22	0	21	0	24	1	23	2	124
	Health & Physical Education, General	310501	7	1	5	4	7	2	8	0	9	4	47
	Health Teacher Education - Master's	131307	3	0	7	0	8	2	15	1	18	0	54
	Psychology, General	420101	18	2	18	0	24	3	18	1	26	1	111
	Reading Literacy Education - Master's	131315	4	1	3	0	14	0	8	0	6	0	36
	Secondary Teacher Education - Master's	131205	4	0	8	0	2	0	4	1	1	2	22
Education & Human Sciences Total			132	5	115	5	123	12	143	5	132	11	683
Nursing & Speech Language Pathology	Nursing (RN Training) - ASN	511601	51	2	34	4	41	4	42	5	36	4	223
	Nursing (RN Training) - BSN	511601	55	3	49	4	71	4	69	5	84	10	354
	Nursing (RN Training) - MSN	511601	24	2	26	1	32	3	31	5	25	4	153
	Speech-Language Pathology - Bachelor's	510203	13	0	11	0	11	0	15	0	13	0	63
	Speech-Language Pathology - Master's	510203	7	0	8	0	14	0	8	0	7	0	44
Nursing & Speech Language Pathology Total			150	7	128	9	169	11	165	15	165	18	837
Total			408	48	368	49	431	50	437	51	405	64	2311

Table C:7a
Degrees Granted AY 1998-2008



**Table C:7b Top Bachelor's and Master's Degrees Awarded in Last 5 Years
Academic Years 2004 - 2008**

Top 10 Bachelor's Degrees in Last 5 Years

Rank	Area of Study	# awarded	% of B.S. degrees
1	Nursing (RN Training) - BSN	354	20%
2	Elementary Teacher Education	244	14%
3	Business Administration & Mgt., General	131	8%
4	Family Life & Relations Studies	124	7%
5	Psychology, General	111	6%
6	Accounting	84	5%
7	English Language & Literature, General	75	4%
8	Visual & Performing Arts	73	4%
9	Communication, General	70	4%
10	Culinary Arts	63	4%
10	Speech-Language Pathology	63	4%

Master's Degrees Awarded Last 5 Years

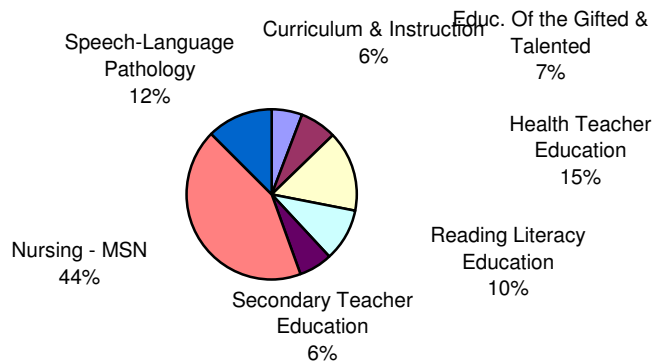


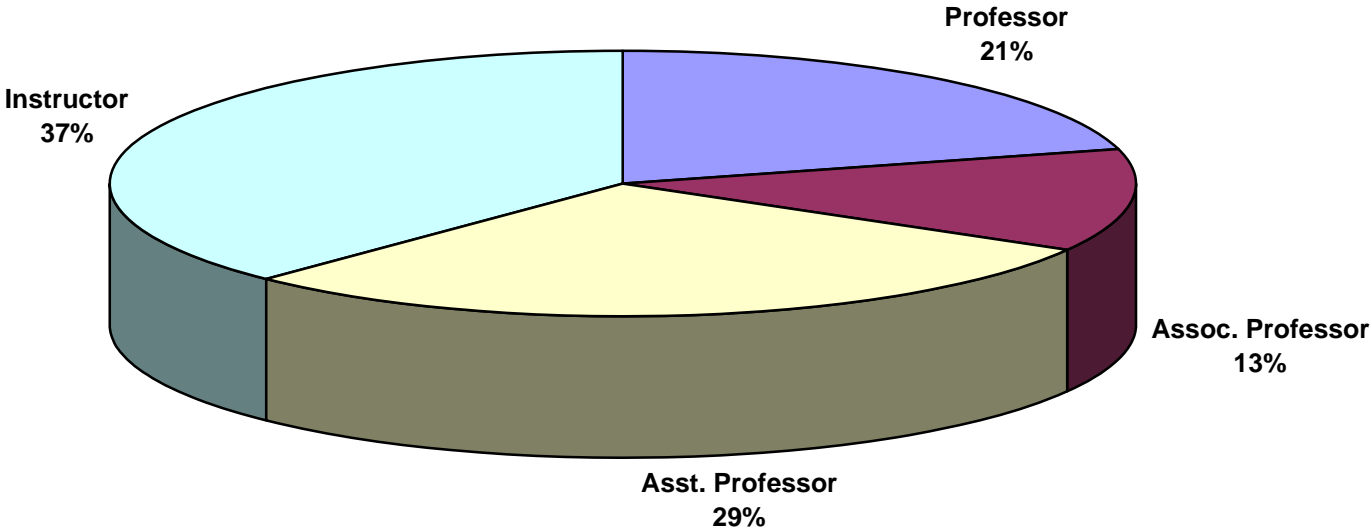
TABLE D:1 Faculty Profile

Fall Sem.	Number				Full-time Faculty by Rank				Full-time Faculty by Degree				F-T Fac by Sex		F-T Fac by Race			F-T Fac Contract	
	Ft-Time	Admin.	Pt-Time	Total	Prof.	Asso.	Asst.	Inst.	Terminal	SPEC.	MSTR.	BACH.	Male	Female	Black	White	Other	ACAD	FISCAL
1999	132	4	80	216	28	22	55	27	92	0	40	0	52	80	2	128	2	105	27
2000	139	4	81	224	31	29	53	26	99	0	40	0	54	85	3	132	4	117	22
2001	134	4	80	218	31	27	44	32	93	0	40	1	53	81	6	123	5	103	31
2002	129	4	79	212	32	28	40	29	89	0	40	0	49	80	7	118	4	99	30
2003	131	5	61	197	33	23	36	39	85	0	46	0	48	83	5	123	3	104	27
2004	133	5	46	184	33	21	35	44	80	0	53	0	50	83	4	125	4	106	27
2005	136	5	66	207	35	21	34	46	81	0	53	2	50	86	4	127	5	110	26
2006	132	9	66	207	30	16	35	51	74	0	56	2	49	83	6	122	4	106	26
2007	136	9	74	219	30	14	39	53	78	0	56	2	49	87	6	121	9	109	27
2008	135	9	59	203	28	17	39	51	76	0	56	3	48	87	5	122	8	110	25

SOURCE: Office of Academic Affairs

***The number of administrators with faculty status increased in Fall 2006 due to the EEOC re-classification of four deans and two other administrators.**

Table D:1a
Full-time Faculty Rank Profile
Fall 2008



Total number of full-time faculty = 136

Table E:1 Summary of Budgeted E&G Revenues and Expenditures

	2008-09		2007-08	
CURRENT FUND REVENUE				
Tuition and Fees	\$ 11,711,547	40.12%	\$ 11,379,185	39.44%
State Govt. Appropriations				
General Support	\$ 13,341,066	45.70%	\$ 13,423,138	46.53%
Interest Funds	\$ 9,389	0.03%	\$ 9,389	0.03%
MS Gov. School	\$ 157,500	0.54%	\$ 157,500	0.55%
Education Enhancement Fund	\$ 2,055,897	7.04%	\$ 2,342,258	8.12%
Contingency Funds	\$ 323,762	1.11%	\$ -	0.00%
Sub-Total	\$ 15,887,614	54.42%	\$ 15,932,285	55.22%
Local Govt. Appropriations	\$ -	0.00%	\$ -	0.00%
Total Govt. Appropriations	\$ 15,887,614	54.42%	\$ 15,932,285	55.22%
Grants and Contracts				
Federal Grants and Contracts	\$ 30,000	0.10%	\$ 55,000	0.19%
State Grants and Contracts	\$ 280,105	0.96%	\$ 397,939	1.38%
Other	\$ 511,776	1.75%	\$ 211,776	0.73%
Sub-Total	\$ 821,881	2.82%	\$ 664,715	2.30%
Sales and Services	\$ 247,338	0.85%	\$ 231,093	0.80%
Other	\$ 525,466	1.80%	\$ 644,021	2.23%
TOTAL CURRENT REVENUE	\$ 29,193,846	100.00%	\$ 28,851,299	100.00%
CURRENT FUND EXPENDITURES				
Total Instructional Cost	\$ 11,805,249	40.44%	\$ 11,562,633	40.08%
Research	\$ 23,947	0.08%	\$ 23,947	0.08%
Public Service	\$ 220,984	0.76%	\$ 220,916	0.77%
Academic Support	\$ 2,930,654	10.04%	\$ 2,786,802	9.66%
Student Services	\$ 2,438,914	8.35%	\$ 2,467,062	8.55%
Institutional Support	\$ 4,205,830	14.41%	\$ 4,219,262	14.62%
Operations & Maintenance	\$ 4,726,128	16.19%	\$ 4,746,537	16.45%
Scholarships & Fellowships	\$ 2,842,140	9.74%	\$ 2,824,140	9.79%
Mandatory Transfers	\$ -	0.00%	\$ -	0.00%
Non-Mandatory Transfers	\$ -	0.00%	\$ -	0.00%
TOTAL CURRENT EXPENDITURES	\$ 29,193,846	100.00%	\$ 28,851,299	100.00%

SOURCE: MUW General Fund Budgets

Table E:1a
2008-2009 MUW GENERAL FUND BUDGET
PERCENT OF TOTAL E&G REVENUE BY BUDGET ENTITY

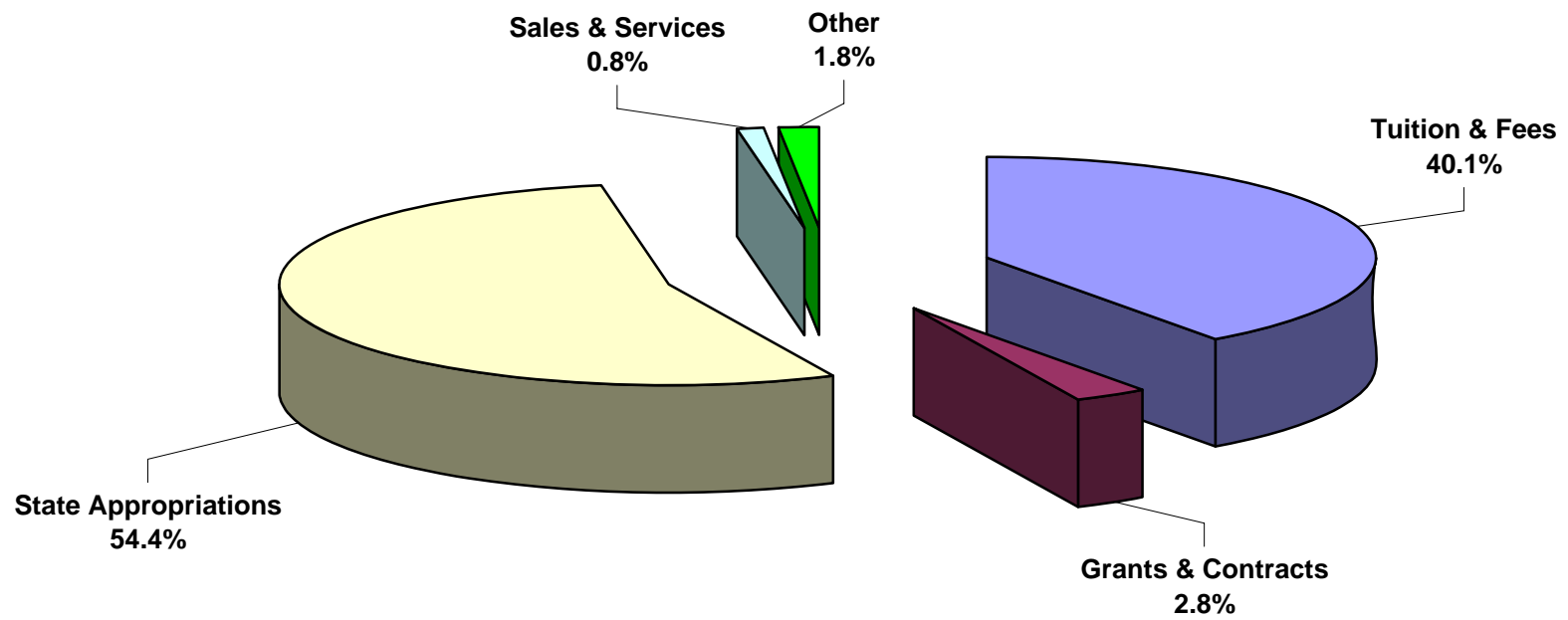


Table E:1b
2008-2009 MUW GENERAL FUND BUDGET
PERCENT OF TOTAL E&G EXPENDITURES BY BUDGET ENTITY

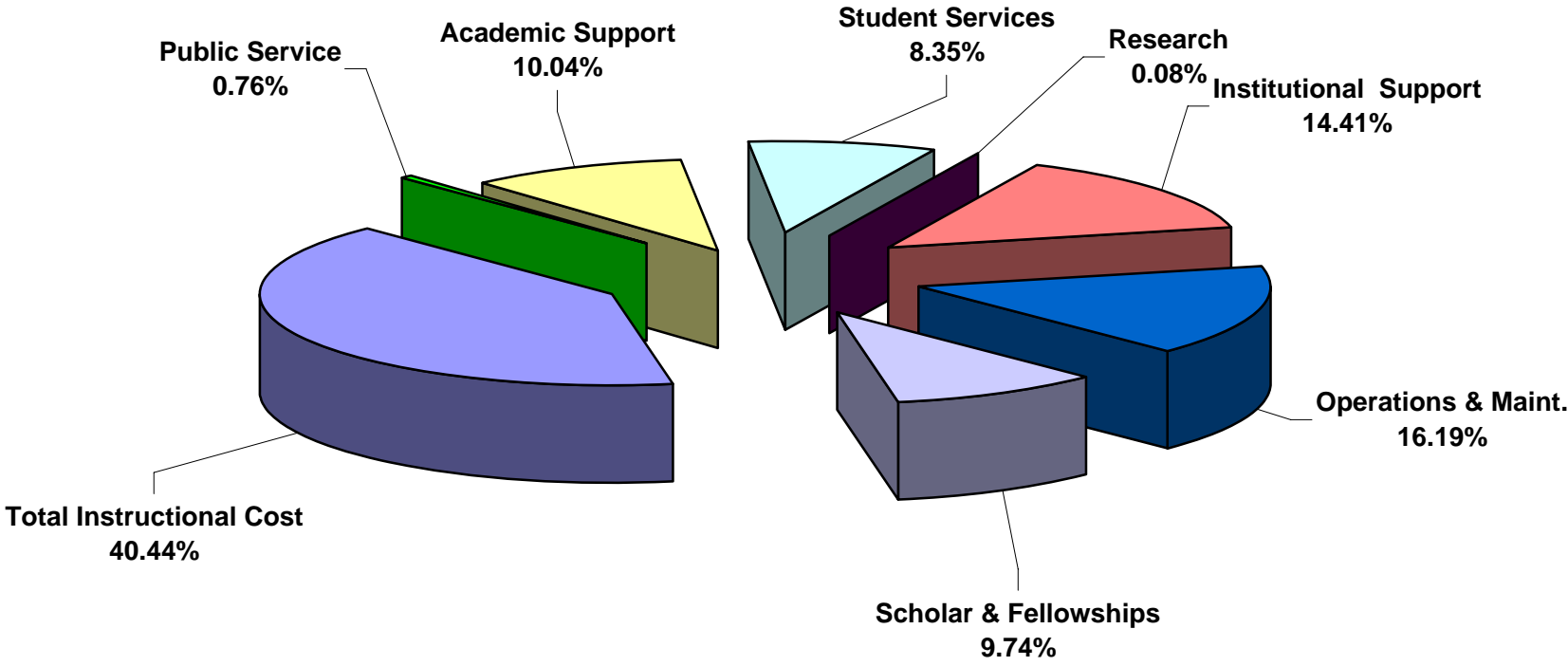


Table E:2
Authorization of State General Obligation Bonds for MUW
FY 1989-90 through FY 2007- 2008

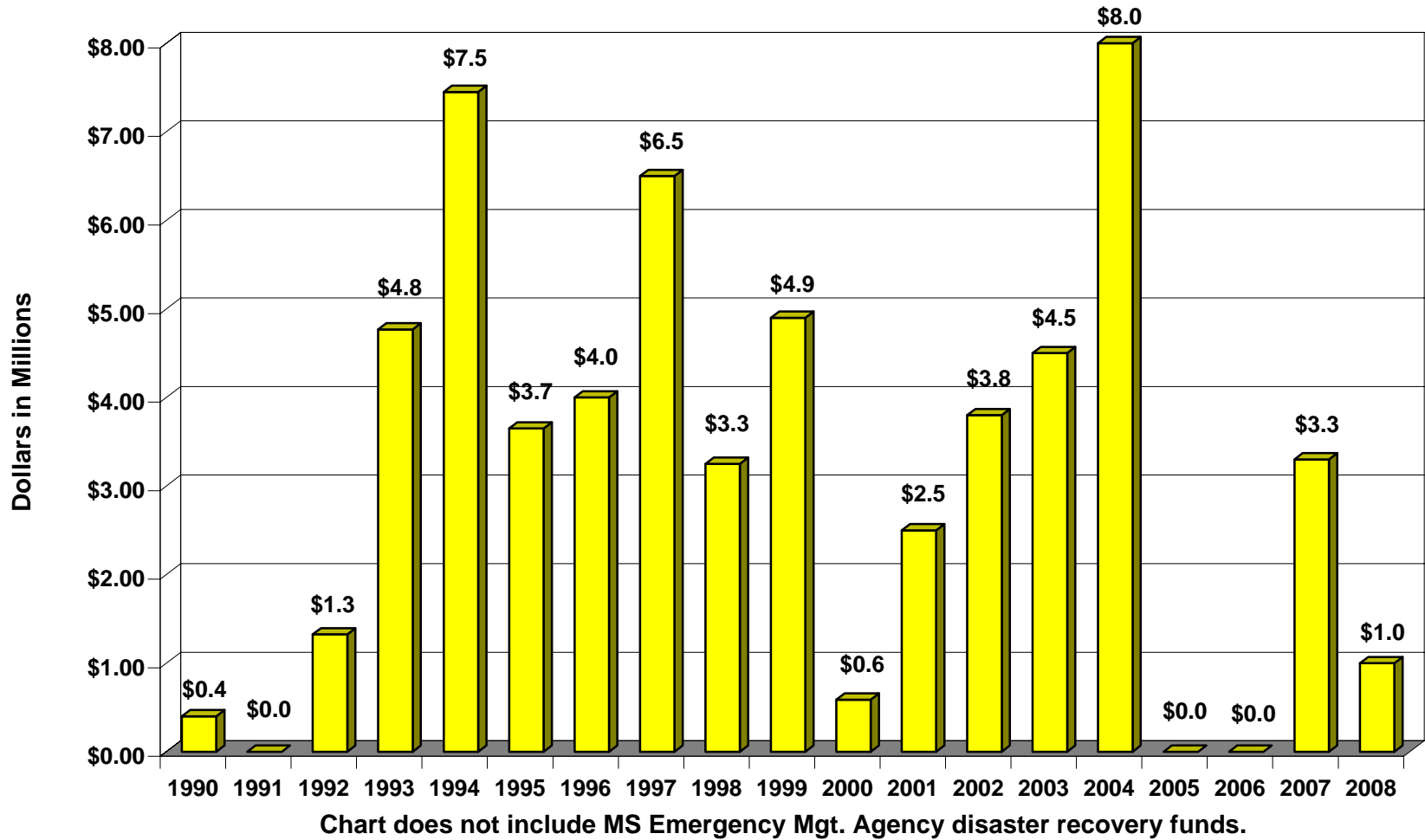


Table E:3
Authorization of State General Obligation Bonds for IHL FY 1989-90 through FY 2007- 08

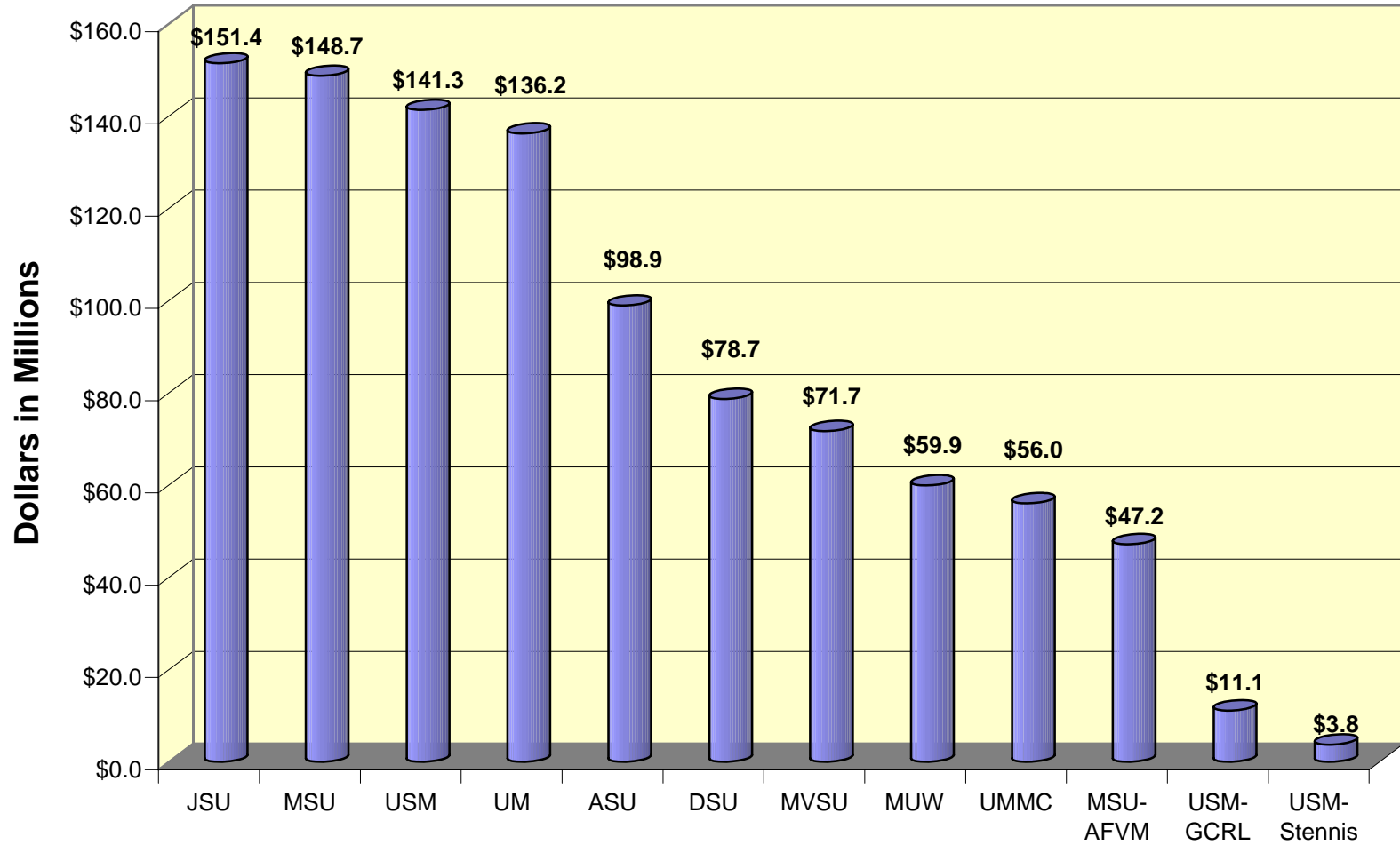


Chart does not include \$35.6 million Ayers bonds divided between ASU, JSU, and MVSU.
Chart does not include MUW's MS Emergency Mgt. Agency disaster recovery funds.

Explanation of Terms

Academic Year is the year that begins with the first summer session and continues through the next spring session; for example, Academic Year 2008-2009 refers to Summer 2008, Fall 2008, and Spring 2009.

ACT is the American College Test, which is divided into four main sections: Mathematics, English, Reading, and Science Reasoning.

CIP Codes are the Classification of Instructional Program Codes that were developed in 2000. These six-digit codes are used to answer questions concerning program enrollments and completions on three of the IPEDS Surveys: Institutional Characteristics, Completions, and Enrollment in Occupationally Specific Programs.

Cohort refers to a specific population, which is studied over a period of time, such as a group of students who enrolled for the first time in the Fall of 2008.

EMAS is the Enrollment Management Action System software that is used by the Admissions Office.

Fiscal Year is the year that begins on July 1 and ends on June 30; for example, Fiscal Year 2008-2009 (FY 2009) extends from July 1, 2008 through June 30, 2009.

Full-time graduate student is one who is enrolled in 9 or more semester credit hours.

Full-time undergraduate student is one who is enrolled in 12 or more semester credit hours.

Graduate FTE (full-time equivalent) is calculated by dividing total graduate semester credit hours by 12.

Headcount as defined by IHL is the actual number of different individuals enrolled in credit courses. Headcount can be unduplicated or duplicated; a duplicated headcount duplicates students who take classes on more than one campus. According to IHL's duplicated headcount definition, an undergraduate student who takes nine hours on main campus and three hours at Tupelo is counted as two part-time undergraduate students. In duplicated headcount, a student's full-time/part-time status is determined by hours per campus not total hours taken.

IHL refers to the Board of Trustees of State Institutions of Higher Learning in Mississippi.

IPEDS is the Integrated Post-secondary Education Data System.

Non-traditional student, as defined by IHL, refers to an undergraduate student who is 25 years of age or over.

Part-time graduate student is one who is enrolled in less than 9 semester credit hours.

Part-time undergraduate student is one who is enrolled in less than 12 semester credit hours.

Ranked faculty are full-time faculty positions including instructors, assistant professors, associate professors, and professors.

SREB (Southern Regional Education Board) States include: Alabama, Arkansas, Delaware, Florida, Georgia, Kentucky, Louisiana, Mississippi, Maryland, North Carolina, Oklahoma, South Carolina, Tennessee, Texas, Virginia, and West Virginia.

**Student Level, as defined by IHL
Definitions Effective as of the Beginning of Summer 2001**

Freshmen – Students who have completed less than 30 semester hours.

Sophomores – Students who have completed at least 30 semester hours, but fewer than 60 semester hours.

Juniors – Students who have completed at least 60 semester hours, but fewer than 90 semester hours.

Seniors – Students who have completed at least 90 semester hours, but have not completed all the requirements for the undergraduate degree for which she/he is currently enrolled.

Fifth Year Level – Student is at advanced undergraduate upper level in five-year programs (e.g. architecture and engineering) or students with a bachelor's or higher degree who are taking additional undergraduate courses.

Master's – Student is in a program or degree that usually covers one year and approximately 30 semester hours above the baccalaureate.

Specialist – Student is in a program or degree that usually covers one year and approximately 30-36 semester hours above the baccalaureate.

Doctoral – Student is in a program or degree that usually covers two years and approximately 60 semester hours above the master's

Unclassified Post-baccalaureate – Student is not a candidate for a Baccalaureate degree or other formal award, although taking graduate classes with other students. Includes but is not limited to “special” and other students taking first-professional or graduate courses, but who are not working toward a degree.

First Professional – Student is in the first year of a Year/Level 1 program or degree leading to the first level of professional training, as recognized by others in the profession. Examples: J.D., M.D., D.V.M. etc.

Total Operating Budget includes restricted, designated, and auxiliary funding.

Type of current registration as defined by IHL:

First-time Freshman – (1) an entering freshman granted fewer hours than required for transfer status (less than 12 hours), including students enrolled in the fall term who attended college for the first time in the prior summer term and did not have the twelve hours required for transfer status or (2) a student who successfully completed the twelve hour Summer Development Program regardless of the institution attended or (3) a student who entered with advance standing (college credits earned before high school graduation)

Returning Student – An undergraduate student who has registered at this institution during the preceding regular term and would not be classed as a first-time freshman.

Readmitted Student – An undergraduate student who previously attended this institution but did not attend this institution during the previous regular term.

Transfer Student – An undergraduate student entering the reporting institution for the first time who was granted at least twelve hours toward a degree or certificate for work done at another post-secondary institution – exceptions include Summer Developmental Program participants and students with advance placement credit or some other form of advanced standing.

Returning Graduate Students – A student who is enrolled for credit for work creditable toward a graduate degree, i.e., master’s, specialist, or doctorate and was previously registered as a graduate student at this institution or another institution.

First-Professional Student – A student who is enrolled for work creditable toward a first professional degree (law, dentistry, medicine)

Transient Student – A student who is regularly enrolled and in good standing at an institution other than the reporting institution and is taking a course or courses at the reporting institution which he/she intends to transfer to his/her regular institution.

High School Student Taking College Courses – A student who is still in high school but has special permission to take a college level course.

Non-formula Students 21 and over - A student who is currently registered under provisions or original admission code of 6 on data element 4-112 which is for students who are at least age 21 and who do not meet admissions standards and who do not fall into the first five Original Admission Code categories.

First-time graduate student – A new graduate student. One who has not been registered previously as a graduate student.

Other – A student who is not classified in one of the preceding categories.

Summer Developmental Program Participant – A student who does not meet one of the four criteria to gain admission defined by Original Admission Code (Element 4-112, Codes “E” through “H”) Valid in summer term only

Unduplicated headcount figures count each individual student once regardless of the number of branch campus affiliations (Tupelo, Columbus Air Force Base).

Undergraduate FTE (full-time equivalent) is calculated by dividing total undergraduate semester credit hours by 15.

Unranked faculty are full-time faculty positions filled by lecturers who do not have tenure and cannot seek rank.

University Abbreviations:

ASU – Alcorn State University

DSU – Delta State University

JSU – Jackson State University

MSU –Mississippi State University

MUW – Mississippi University for Women

MVSU – Mississippi Valley State University

UM – University of Mississippi

UMMC – University of Mississippi Medical Center

USM – University of Southern Mississippi

MSU-AFVM – Mississippi State University’s Division of Agriculture, Forestry, and
Veterinary Medicine

USM-GCRL – University of Southern Mississippi’s Gulf Coast Research Laboratory

USM-Stennis – University of Southern Mississippi’s Stennis Space Center