



Mississippi University for Women

FOUNDED 1884 COEDUCATIONAL SINCE 1982



2018-19 Fact Book

Office of Institutional Research and Assessment
Reneau Hall - 118
1100 College St., MUW - 160
Columbus, MS 39701
(662)-329-8543

Mississippi University for Women 2018-19 Fact Book

**Office of Institutional Research and Assessment
Reneau Hall - 118
1100 College St., MUW - 160
Columbus, MS 39701
(662)-329-8543**

Mississippi University for Women

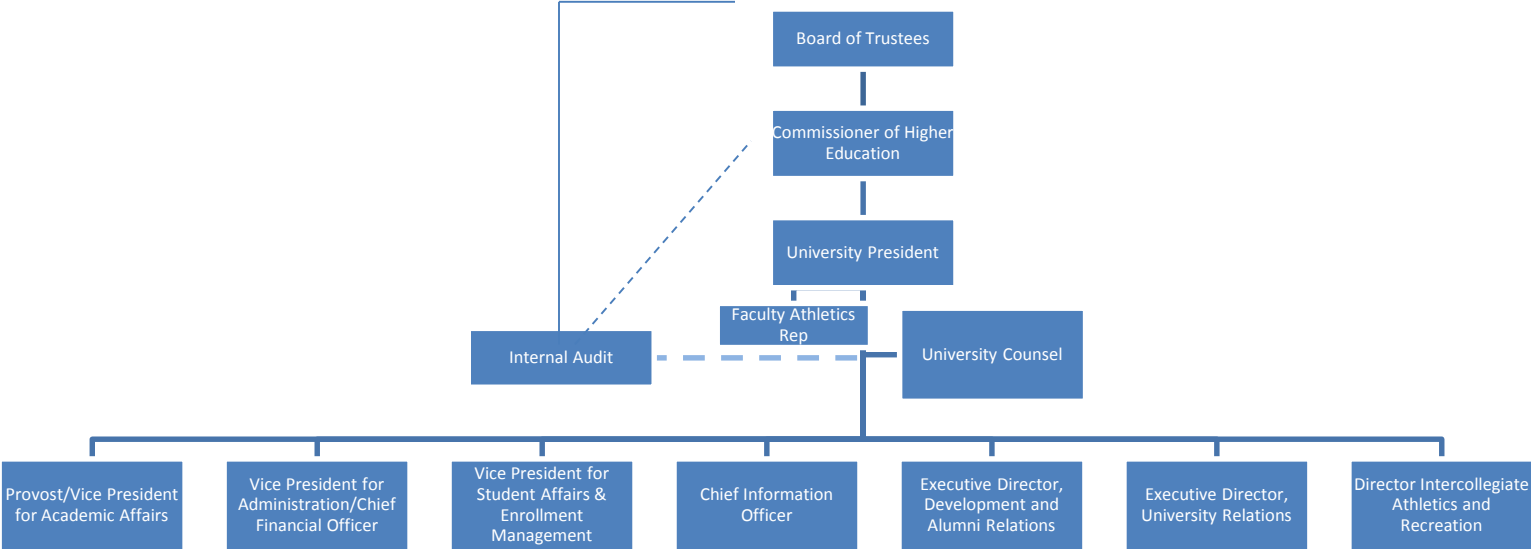
2018-19 Fact Book

Table of Contents

University Organizational Chart	1
MUW Vision, Mission, & Guiding Principles	2
MUW Strategic Priorities and Goals	4
MUW Profile	5
Fall 2018 Profile	6
EAC Report Card: 2016-17	8
1. First-Time Student	
1.1 First-Time Freshman Enrollment & Funnel Rates: Fall Terms	10
1.2 First-Time, Full-Time Bachelor’s Degree Seeking Freshman Headcount: Graph: Fall Terms... 10	
1.3 First-Time Transfer Enrollment & Funnel Rates: Fall Terms	11
1.4 First-Time, Full-Time Bachelor’s Degree Seeking Transfer Headcount: Graph: Fall Terms	11
1.5 First-Time, Undergraduate Degree Seeking Student ACT & SAT Scores: Fall Terms	12
1.6 First-Time, Full-Time Bachelor’s Degree Seeking Freshman Cohort Retention & Graduation Rates	13
1.7 First-Time, Full-Time Bachelor’s Degree Seeking Transfer Cohort Retention & Graduation Rates	14
2. Student Enrollment	
2.1 Unduplicated Headcount and FTE Enrollment: Fall Terms	15
2.2 Duplicated Headcount by Campus: Fall Terms	15
2.3 Unduplicated Headcount and FTE Enrollment: Spring Terms	16
2.4 Unduplicated Headcount and FTE Enrollment: Summer Terms	16
2.5 Unduplicated Enrollment by Gender: Fall Terms	17
2.6 Unduplicated Enrollment by Race/Ethnicity: Fall Terms	17
2.7 Unduplicated Enrollment by Race/Ethnicity, Gender and FT/PT Status: Fall Terms	18
2.8 Unduplicated Enrollment and Credit Hr. Production by FT/PT Status: Fall Terms	19
2.9 Unduplicated Enrollment by Student Classification: Fall & Spring Terms	20
2.10 Unduplicated Enrollment by Credit Hrs. and Student Classification: Fall 2018	21
2.11 Fiscal Year Headcount and FTE Enrollment	22
2.12 Unduplicated Enrollment by Age Distribution and Student Classification: Fall Terms	23
2.13 Unduplicated Enrollment by Non-traditional and Traditional Students: Fall Terms	24
2.14 Residence Hall Student Enrollment: Fall Terms	25
2.15 Unduplicated Enrollment by Residence Hall and Commuter Students: Fall Terms	26
2.16 Unduplicated Enrollment by Course Method: Fall Terms	27
2.17 Unduplicated Enrollment by State of Residence: Fall Terms	28
2.18 Unduplicated Enrollment by Country: Fall Terms	30
2.19 Unduplicated Enrollment by MS County: Fall Terms	31
2.20 Unduplicated Enrollment by IHL Official API: Fall 2018	34
2.21 Unduplicated Enrollment by IHL Official API: Spring 2018	35

3. Program Enrollment & Degrees Awarded	
3.1 Unduplicated Enrollment by College & Department: Fall Terms	36
3.2 Unduplicated Enrollment by College, Department, & Major/Concentration: Fall Terms	37
3.3 Unduplicated Enrollment by Minor: Fall Terms	42
3.4 Unduplicated Enrollment by Second Major: Fall Terms.....	45
3.5 Class Type Enrollment: Fall Terms.....	47
3.6 Credit Hour Generation by College & Department: 3 Years.....	48
3.7 Online Credit Hour Generation by College and Department: 3 Years	50
3.8 Degrees Awarded by IHL Official API: AY 2018	52
3.9 Degrees Awarded by CIP, Major/Concentration, Race/Ethnicity and Gender: AY 2018.....	53
3.10 Degrees Awarded: Chart: AY 2018.....	57
3.11 History of Degrees Awarded by Program and CIP: 5 Years.....	58
3.12 History of Degrees Awarded by Program, CIP, & Gender: 5 Years.....	60
3.13 Top Bachelor and Master Degrees Awarded in the Last 5 Years: Chart.....	62
3.14 History of Degrees Awarded by Academic Level: 10 Years	63
3.15 Degrees Awarded by CIP and Major/Concentration: 5 Years.....	64
3.16 Degrees Awarded by Second Major: 5 Years.....	68
4. Faculty	
4.1 Faculty Profile	69
4.2 Faculty Credit Hour Production by Course Level	70
4.3 Employee Profile by EEOC.....	71
5. Revenues and Expenditures	
5.1 Summary of Budgeted E&G Revenues and Expenditures	72
5.2 2018-2019 E&G Revenues and Expenditures by Budget Entity: Chart.....	73
5.3 Authorization of State Gen. Obligation Bonds for IHL & MUW FY 1999-2018.....	74
MUW Accreditation Information.....	75
MUW Organizational Chart – Provost/Vice President for Academic Affairs	83
MUW Organizational Chart – Academic Units	84
APPENDIX A: Endnotes.....	85
APPENDIX B: Explanation of Terms.....	87

MUW Organizational Chart



Mississippi University for Women

Vision, Mission and Guiding Principles

Vision

Building on its long tradition of excellence in liberal arts and professional education, as well as its historic focus on academic and leadership development for women, Mississippi University for Women will continue to be a university that prepares both women and men for successful lives by providing a high-quality education in a personalized learning environment.

Mission

Mississippi University for Women (MUW), a public institution since 1884, provides high quality undergraduate and graduate education for women and men in a variety of liberal arts and professional programs, while maintaining its historic commitment to academic and leadership development for women. MUW emphasizes a personalized learning environment in all of its educational programs, which are offered through the College of Arts, Sciences, and Education, College of Business and Professional Studies, and College of Nursing and Health Sciences. MUW delivers selected programs and courses through distance education formats to provide educational opportunities throughout Mississippi and the United States, while addressing the unique educational and public service needs of northeast Mississippi and adjoining counties in northwest Alabama. MUW supports research, scholarship, and creativity to enhance faculty development and student learning and to advance knowledge in the disciplines offered by the university.

Revised October 19, 2017

Guiding Principles

MUW provides high-quality instructional programs that emphasize teaching and learning. With faculty and staff of the highest caliber, MUW is dedicated to providing a campus environment that encourages lifelong learning, strong career preparation, and personal growth. Graduates are expected to have skills in communication, technology, and critical thinking, as well as an awareness of self, gender-related issues, cultural diversity, and responsible citizenship.

MUW is student oriented. MUW provides small classes and emphasizes personalized student attention, so that each student will have the opportunity to succeed. MUW offers a student-life program that stimulates learning and leadership development.

MUW values research, scholarship, and creativity. While MUW is primarily a teaching institution, the university supports research, scholarship, and creativity to enhance the professional development of faculty and staff in order to better prepare students.

MUW is committed to diversity among its faculty, staff, and students. The faculty, staff, and students of MUW represent the global society in which we live. MUW believes that diversity allows students to grow in their understanding of self and others.

MUW endorses sound organizational principles and is committed to operational efficiency, collaborative strategic planning, institutional effectiveness, and creative problem solving.

MUW meets regional, state, and national needs for higher education. The University responds to the needs of the local community by providing cultural activities; programs for intellectual, professional, and social development; and by assisting in economic development. MUW extends its outreach to the state and nation using multiple delivery methods, including the internet and other advanced systems.

MUW is committed to public service. MUW forms partnerships with businesses, as well as with educational, governmental, public service, and charitable organizations, to create opportunities that provide economic and social advantages for the institution, community, and region.

Approved by the Mississippi IHL Board on January 15, 2004

Mississippi University for Women

Strategic Priorities and Goals: 2016-2021

The University will cultivate a culture of Advancement Excellence to strengthen engagement among its constituencies by:

- Creating a culture of giving
- Establishing and maintaining affinity groups
- Fostering pride in University events and private giving
- Increasing awareness of university programs and strengths

The University will promote Regional Stewardship through partnerships across campus and the region by:

- Cultivating collaborations that increase health and well-being
- Providing outreach to underserved populations
- Strengthening and expanding K-12 partnerships
- Contributing to the creative economy
- Forging meaningful and engaged partnerships that provide real-life experiences for students

The University will foster a 21st Century learning environment by:

- Enhancing and effectively utilizing advanced instructional technologies
- Broadening educational opportunities and programs for the diverse student body
- Maintaining, enhancing and expanding international partnerships
- Increasing emphasis on diversity of faculty and staff
- Cultivating communities to create opportunities for academic engagement
- Fostering leadership development and a commitment to a safe ethical environment
- Enhancing business processes and the campus infrastructure, ensuring continuing financial sustainability

The University will cultivate a comprehensive approach that enhances retention, Completion and student success by:

- Enhancing student advising, mentoring, and support services
- Recruiting a diverse student body to ensure a vital university community
- Providing resources to assist students with achieving and maintaining financial stability
- Providing academic programs to meet the needs of today's student and workforce

MUW Accolades & Achievements

- U.S. News & World Report
 - Ranked 11th as a best value among public Southern regional universities.
 - Tied 20th among best public regional universities in the South.
 - Ranked 40th as a Best Colleges for Veterans among Southern regional universities.
- Washington Monthly
 - Ranked 20th in the Best Bang for the Buck Universities (South).
- Chronicle of Higher Education
 - For the sixth consecutive year, MUW was recognized as a Great College to Work For with Honor Roll status.

MUW Employees

MUW has approximately 302 full-time employees.

- Approximately 70% of full-time employees are female.
- Approximately 30% of full-time employees are male.
- Approximately 18% of full-time employees are minorities.

MUW has approximately 111 part-time employees.

MUW is an affirmative action/equal opportunity institution.

Student Fees: Academic Year 2018-2019

	Tuition	Capital Improvement Fee	Total
Undergraduate Tuition			
Full Time (12-19 credits)	\$3,420.00	\$50.00	\$3,470.00
Per Credit Hour	\$285.00	\$4.17	\$289.17
Graduate Tuition			
Full Time (12-19 credits)	\$3,420.00	\$50.00	\$3,470.00
Per Credit Hour	\$380.00	\$5.56	\$385.56

Grounds and Buildings

The campus covers more than 114 acres within the historic district of central Columbus, MS. Twenty-three of more than 60 buildings are listed on the National Register of Historic Places.

Fall 2018 Profile

Fall 2018	Fall 2017	% Change	Category - University
2,711	2,789	-2.8%	Total Unduplicated Headcount
2,311	2,403	-3.8%	Total FTE
2,109	2,230	-5.4%	Full-time
602	559	7.7%	Part-time
2,167	2,241	-3.3%	Gender: female
544	548	-0.7%	Gender: male
958	960	-0.2%	Race/Ethnic: African-American/black.
1,606	1,662	-3.4%	Race/Ethnic: white
147	167	-12.0%	Race/Ethnic: other
2,302	2,346	-1.9%	Citz/Residency: domestic/MS
77	77		<i>MS Counties Represented</i>
350	365	-4.1%	Citz/Residency: domestic/US States (Non MS)
32	30		<i>US States Represented (Non MS)</i>
59	78	-24.4%	Citz: International
20	15		<i>Countries Represented</i>
813	837	-2.9%	Online Enrollment (Only)
839	989	-15.2%	Face-to-Face Enrollment (Only)
1,059	963	10.0%	Mixed Enrollment
1,921	1,944	-1.2%	Age: Traditional <= 24
790	845	-6.5%	Age: Non-Traditional >=25
24.6	24.7		Age: Average
2,505	2,577	-2.8%	Undergraduate Headcount
206	212	-2.8%	Graduate Headcount
648	680	-4.7%	College: Arts, Sciences, & Education
562	566	-0.7%	College: Business & Professional Studies
1,173	1,236	-5.1%	College: Nursing & Health Sciences
328	307	6.8%	College: University
546	569	-4.0%	Dorm
2,165	2,220	-2.5%	Commuter

Fall 2017 to Fall 2018	Fall 2016 to Fall 2017	Category - FT-FT Bachelor's Retention
62.7% (136 of 217)	59.4% (165 of 278)	1 Year Retention Rate - FT-FT, Bach. Freshmen
80.6% (525 of 651)	80.8% (488 of 604)	1 Year Retention/Grad Rate - FT-FT, Bach. Transfer
46.4% (302)	39.6% (239)	1 Year Retention Rate - FT-FT, Bach. Transfer
34.3% (223)	41.2% (249)	1 Year Grad Rate - FT-FT, Bach. Transfer

Fall 2012 to Fall 2018	Fall 2011 to Fall 2017	Category - FT-FT Bachelor's Graduation
46.7% (85 of 182)	44.3% (77 of 174)	6 Year Graduation Rate - FT-FT, Bach. Freshmen
74.3% (446 of 600)	72.3% (358 of 495)	6 Year Graduation Rate - FT-FT, Bach. Transfer

Fall 2018 Profile

Fall 2018	Fall 2017	% Change	Category - New Students
861	946	-9.0%	New Students (Freshman & Transfer)
189	217	-13%	Freshman Cohort Total
7%	8%		<i>Percent of Total Headcount</i>
186	217	-14.3%	FT-FT, FR Bachelor's Degree Seeking
3	0	-	FT-PT, FR Bachelor's Degree Seeking
0	0	-	FT-FT, FR Other Degree Seeking
0	0	-	FT-PT, FR Other Degree Seeking
187	216	-13.4%	Freshman Cohort Citizenship: Domestic
2	1	100.0%	Freshman Cohort Citizenship: International
21.5	21.2	1.3%	FT-FT, FR Bachelor's - ACT Composite Average
21.5	21.2	1.3%	FT-FT, FR Bachelor's - ACT & Conv. SAT Composite Avg.
672	729	-8%	Transfer Cohort Total
25%	26%		<i>Percent of Total Headcount</i>
585	651	-10.1%	FT-FT, TR Bachelor's Degree Seeking
33	29	13.8%	FT-PT, TR Bachelor's Degree Seeking
52	46	13.0%	FT-FT, TR Other Degree Seeking
2	3	-33.3%	FT-PT, TR Other Degree Seeking
258	279	-7.5%	Transfer Cohort Major: RN/BSN Tupelo

AY 2018	AY 2017	% Change	Category - Degrees Awarded
894	882	1.4%	Total Degrees Awarded
50	41	22.0%	Degrees Awarded: ASN
753	731	3.0%	Degrees Awarded: BACH
86	104	-17.3%	Degrees Awarded: MASTER
5	6	-16.7%	Degrees Awarded: DNP

FY 2018	FY 2017	% Change	Category - IPEDS HC & FTE
3,272	3,465	-5.6%	FY IPEDS Headcount
3,020	3,200	-5.6%	Undergraduate Headcount
252	265	-4.9%	Graduate Headcount
2,640	2,718	-2.9%	FY IPEDS FTE
2,447	2,521	-2.9%	Undergraduate FTE
193	197	-2.0%	Graduate FTE

Fall 2018	Fall 2017	Category - IPEDS Student Faculty Ratio
13 to 1	14 to 1	Student to Faculty FTE Ratio



	This Institution		University System Average	
	Number	Percent	Number	Percent
Student Enrollment				
Total Headcount Enrollment	3,759		11,982	
Undergraduate	3,460	92.0%	9,473	79.1%
Graduate & Professional	299	8.0%	2,509	20.9%
Total Full-Time Equivalent (FTE) Enrollment	2,718		9,971	
Undergraduate	2,521	92.8%	8,295	83.2%
Graduate & Professional	197	7.2%	1,676	16.8%
New Undergraduate Students (Percent of Total Undergraduates)	1,143	33.0%	2,768	29.2%
Entering Freshmen	302	8.7%	1,555	16.4%
Entering Transfers - MS Community Colleges	673	19.5%	869	9.2%
Entering Transfers - All Other Institutions	168	4.9%	344	3.6%
Undergraduate Enrollment in High-Need Disciplines (Percent of Total Undergraduates)				
Science, Technology, Engineering, Mathematics (STEM)	155	4.5%	2,471	26.1%
Education (Including Non-Teaching Areas)	134	3.9%	739	7.8%
Nursing (All Undergraduate Levels)	1,215	35.1%	712	7.5%

Degrees Awarded				
Undergraduate Degrees per 100 Undergraduate FTE Enrollment	31.8	--	20.8	--
Total Degrees Awarded	882		2,220	
Certificate	0	0.0%	11	0.5%
Associate	41	4.6%	6	0.3%
Baccalaureate	731	82.9%	1,626	73.2%
Graduate and Professional	110	12.5%	577	26.0%
Undergraduate Degrees in High-Need Disciplines (Percent of Total Undergraduates)				
Science, Technology, Engineering, Mathematics (STEM)	19	2.5%	363	22.1%
Education (Including Non-Teaching Areas)	18	2.3%	127	7.7%
Nursing (All Undergraduate Levels)	440	57.0%	207	12.6%
Graduate Degrees in STEM Disciplines (Percent of Total Graduate Degrees)	0	0.0%	103	18.1%

College Readiness				
Average ACT Score of Entering Freshmen, Fall 2016	22.1	--	23.3	--
Students enrolled in One or More Intermediate Courses, Fall 2016	144		440	
Students enrolled in intermediate math during first year	62	43.1%	203	46.1%
Students enrolled in intermediate English/reading during first year	31	21.5%	111	25.2%
Students enrolled in both math and English/reading during first year	51	35.4%	126	28.6%
Fall 2014 intermediate math students completing math gateway course in 2 years	--	49.6%	--	43.7%
Fall 2014 intermediate English students completing English gateway course in 2 years	--	68.1%	--	61.0%

Student Progress				
Percent of full-time students completing 24 credit hours within one academic year	--	76.0%	--	75.1%
Percent of part-time students completing 12 credit hours within one academic year	--	20.9%	--	44.9%
One-Year Retention Rates for Entering Full-Time Freshmen, Fall 2015 returning in Fall 2016	--	59.2%	--	78.3%
Graduation Rates of First-time, full-time Freshman Cohort, Fall 2009	206		1,109	
Cohort students graduating within 4 years (100% of normal time)	56	27.2%	322	29.0%
Cohort students graduating within 6 years (150% of normal time)	101	49.0%	578	52.1%
Cohort students graduating within 8 years (200% of normal time)	107	51.9%	605	54.6%

Research				
External Research Dollars – All Sources (in Millions)	\$5.4	--	\$52.0	--
Percent of External Research from Federal Sources	10.8%	--	73.1%	--
Number of Research Projects Supported	12	--	300	--

Other University Variables				
Percent of median family income required to cover tuition and fees	31.1%	--	36.1%	--
Total state expenditures per total FTE student	\$12,989	--	\$15,174	--
Percent of Full-Time Instructional Faculty with Terminal Degree, Fall 2016	67.6%	--	79.5%	--



Academic Year 2016-17 (AY2016-17) – The Institutional Profile is for the 2016-17 academic year and includes the Summer 2016, Fall 2016, and Spring 2017 terms. Some reporting terms may vary depending on the length of time for each metric.

University System Average – The university system average is based on eight institutions and includes the Medical Center with the University of Mississippi in most instances. Figures including UMMC data are denoted with an asterisk (*).

Total Headcount Enrollment – Total headcount enrollment figures are unduplicated for the academic year. Academic level and degree objective are for enrollment are based on the last term of attendance for the year. [Source: IHLMIS]

Total Full-Time Equivalent (FTE) Enrollment – Total full-time equivalent enrollment figures are based on undergraduate and graduate credit hour activity over a 12-month period. Calculation uses a trailing summer in accordance with IPEDS. [Source: Federal IPEDS]

Entering Freshmen – Entering freshmen figures are based on an unduplicated count of entering freshmen at any point during the academic year. [Source: IHLMIS]

Entering Transfers – Entering transfer figures are based on an unduplicated count of entering transfer students at any point during the academic year from Mississippi's community colleges and all other postsecondary institutions. [Source: IHLMIS]

Science, Technology, Engineering, Mathematics (STEM) Enrollment & Degrees – STEM enrollment includes the number of undergraduate students majoring in science, technology, engineering, and mathematics as defined by the National Science Foundation (NSF). A complete listing of the NSF-STEM majors can be found at <http://www.ice.gov/doclib/sevis/pdf/stem-list.pdf> [Source: IHLMIS]

Education (Including Non-Teaching Areas) and Nursing Enrollment (All Undergraduate Levels) Enrollment & Degrees - Education enrollment includes the number of undergraduate students majoring in any education discipline according to the 13 CIP code. This includes teaching and non-teaching education majors. Nursing enrollment includes the number of undergraduate students majoring in any nursing discipline. [Source: IHLMIS]

Undergraduate Degrees per 100 Undergraduate FTE Enrollment – Figures indicate the number of undergraduate degrees awarded per 100 undergraduate FTE students. Undergraduate degrees include certificates, associates, and baccalaureate degrees. Undergraduate FTE is based on an four-year average of annual undergraduate FTE figures. [Source: Degrees – IHLMIS; Student FTE – Federal IPEDS]

Intermediate Enrollment – It should be noted that institutions have varying academic policies regarding intermediate enrollment. Intermediate enrollment includes the number of students taking one or more Intermediate courses. The three intermediate groups (math only, English only, and both math and English) are treated as three separate groups. Figures are based on Fall term data and exclude the Academic Support Lab. [Source: IHLMIS]

Student Progress – Full-time status includes students taking 12 or more hours during the fall term while part-time students include students taking less than 12 hours during the fall term. Students earning zero credit hours for the entire academic year were excluded from the metric since most were not enrolled for the entire academic year. [Source: IHLMIS]

Retention Rates – Retention rates reflect the percentage of first-time, full-time entering freshmen during the Fall 2015 term who return for the Fall 2016 term. [Source: Federal IPEDS]

Graduate Rates – Graduation rates reflect the percentage of first-time, full-time freshmen during the Fall 2009 term who graduated at 4-year (100% of normal time), 6-year (150% of normal time), and 8-year (200% of normal time) intervals. [Source: Federal IPEDS]

External Research Dollars – External funds provided to the university by a variety of sources (primarily federal) for the purpose of advancing the research mission of the institution as well as contributing to teaching and service missions. [Source: IHL Universities]

Percent of Median Family Income Required to Cover Tuition and Fees – The median household income figure was derived from the American Community Survey (ACS) conducted by the U.S. Census. The tuition and fee figures reflect 2016-17 tuition and fees with average room (for double occupancy) and board (average plan) charges approved by the IHL Board. [Sources: U.S. Census & IHL Finance]

State Expenditures per Total FTE Student – State expenditures for FY2017 were calculated by combining on-campus and off-campus expenditures minus capital expense funds using institutional MBR reports. FTE student figures were derived using 12-month figures from IPEDS. [Source: Federal IPEDS and IHL Finance MBR Reports]

Instructional Faculty with Terminal Degree – Figures represent the percentage of full-time instructional faculty with a terminal or first-professional degree. Terminal degrees also include master's degrees in fine arts (M.F.A.), social work (M.S.W.) and library science (M.L.S.). [Source: IHLMIS]

First-Time Freshman: Enrollment & Funnel Rates | Table 1.1
Fall 2014 - 2018

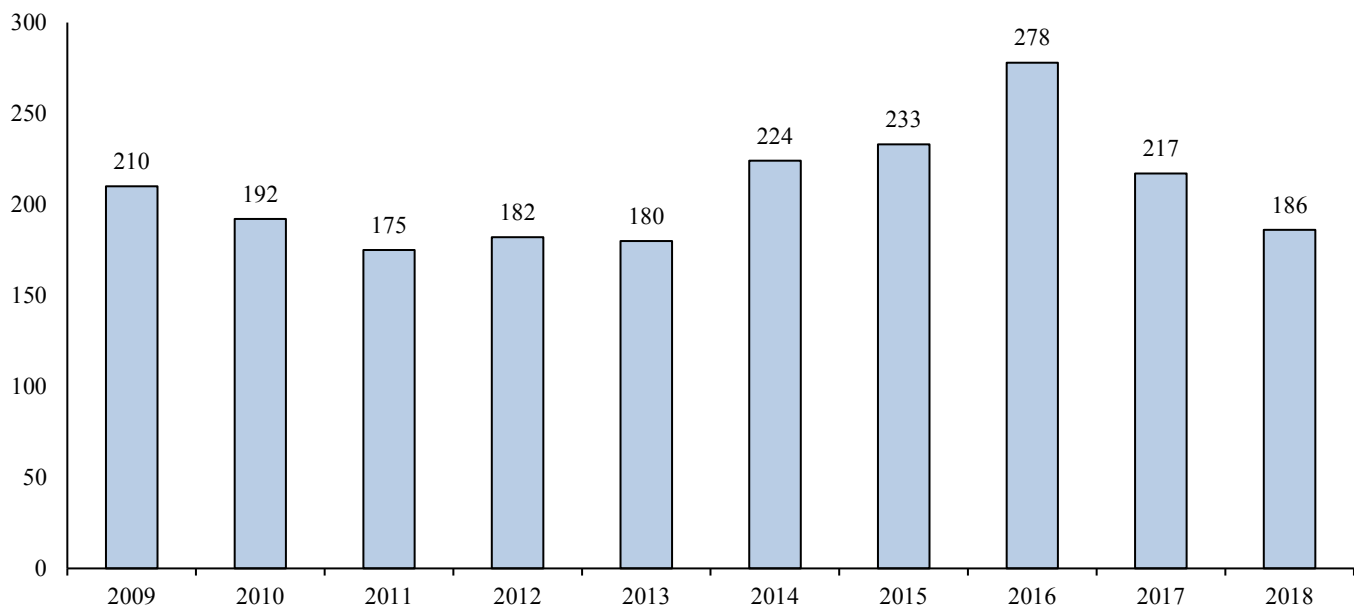
First-Time Freshman	2014	2015	2016	2017	2018	5 Yr # Ch	5 Yr %Ch
Inquiries	9,036	5,219	6,524	6,609	6,725	-2,311	-26%
Conversion ratio from inquiry to application	8%	13%	11%	11%	9%		
Applicants	720	671	750	708	585	-135	-19%
Admit Rate from application to admission	94%	96%	99%	98%	98%		
Admitted	674	645	741	694	572	-102	-15%
Yield rate from admission to enrollment	36%	38%	39%	31%	33%		
Of those Enrolled							
First-time, Full-time Bachelor's Degree Seeking	224	233	278	217	186	-38	-17%
First-time, Part-time Bachelor's Degree Seeking	1	0	0	0	3	2	200%
First-time, Full-time Other Degree Seeking	18	13	11	0	0	-18	-100%
First-time, Part-time Other Degree Seeking	0	0	1	0	0	0	-
Total Enrolled Degree Seeking Freshmen	243	246	290	217	189	-54	-22%

Cohorts are defined using fall enrollment archived on the official census date.

Cohort totals include the students excluded from retention.

Starting fall 2014, the definition of an applicant was changed to match IHL and IPEDS.

First-time, Full-time Bachelor's Degree Seeking Freshman Headcount | Table 1.2
Fall 2009 - 2018



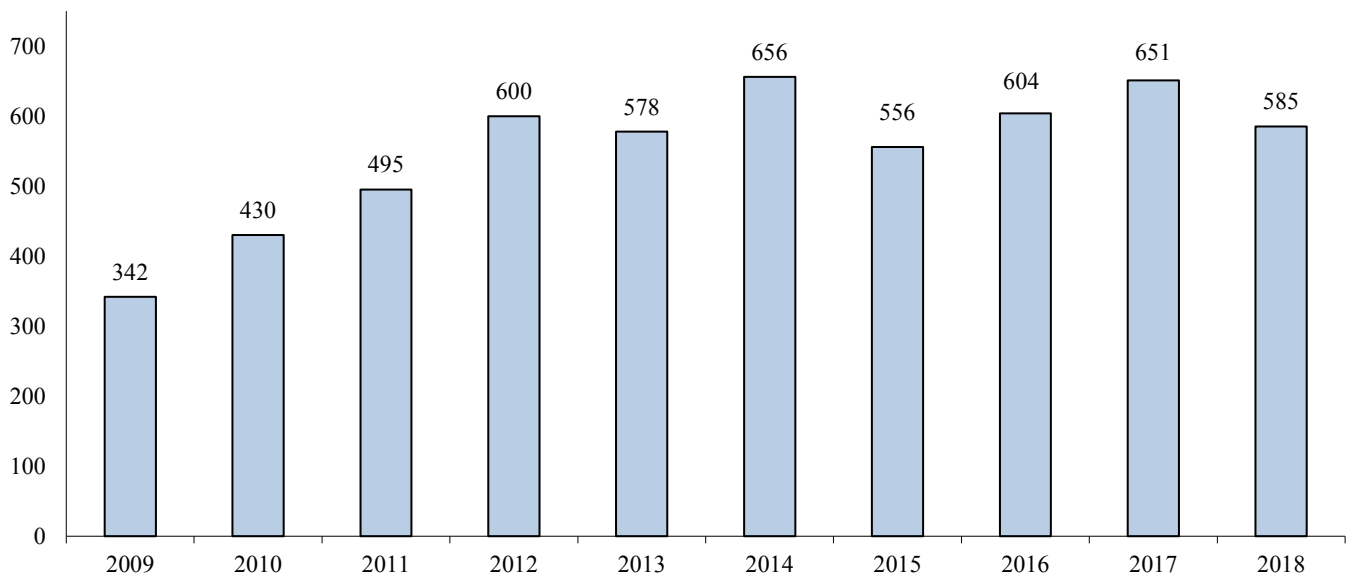
The freshman cohort totals include the students excluded from retention.

First-Time Transfer: Enrollment & Funnel Rates | Table 1.3
Fall 2014 - 2018

First-Time Transfer	2014	2015	2016	2017	2018	5 Yr # Ch	5 Yr %Ch
Inquiries	1,731	2,009	2,210	2,152	2,722	991	57%
Conversion ratio from inquiry to application	62%	58%	53%	54%	41%		
Applicants	1,065	1,163	1,163	1,168	1,109	44	4%
Admit Rate from application to admission	93%	97%	98%	98%	97%		
Admitted	989	1,124	1,134	1,141	1,075	86	9%
Yield rate from admission to enrollment	77%	56%	61%	64%	63%		
Of those Enrolled							
First-time, Full-time Bachelor's Degree Seeking	656	556	604	651	585	-71	-11%
First-time, Part-time Bachelor's Degree Seeking	37	26	28	29	33	-4	-11%
First-time, Full-time Other Degree Seeking	64	51	48	46	52	-12	-19%
First-time, Part-time Other Degree Seeking	2	1	10	3	2	0	0%
Total Enrolled Degree Seeking Transfers	759	634	690	729	672	-87	-11%

Cohorts are defined using fall enrollment archived on the official census date.
 Cohort totals include the students excluded from retention.
 Starting fall 2014, the definition of an applicant was changed to match IHL and IPEDS.

First-time, Full-time Bachelor's Degree Seeking Transfer Headcount | Table 1.4
Fall 2009 - 2018



The transfer cohort totals include the students excluded from retention.
 Due to a change in IPEDS reporting, the transfer cohorts from fall 2007-2014 have been redefined to include new transfers from the preceding summer. For fall 2015 forward, the transfer cohort will include summer transfers.

First-time, Undergraduate Degree Seeking Student ACT & SAT Scores | Table 1.5

Fall 2014 - 2018

Fall 2014 ACT	Comp	Math	English	Reading	Science	Fall 2014 ACT & SAT	ACT & Conv SAT Comp¹	Conv SAT Comp	SAT VERB	SAT MATH
25th percentile	18	16	17	18	18	25th percentile	18	22	445	580
50th percentile	20	18	21	21	20	50th percentile	21	23	470	620
75th percentile	23	22	24	25	23	75th percentile	23	26	545	655
Average	20.7	19.0	21.2	21.7	20.4	Average	21.1	24.0	487.7	613.2
Minimum	13	14	11	11	9	Minimum	13	21	320	490
Maximum	31	29	35	36	31	Maximum	31	30	720	730

Fall 2015 ACT	Comp	Math	English	Reading	Science	Fall 2015 ACT & SAT	ACT & Conv SAT Comp¹	Conv SAT Comp	SAT VERB	SAT MATH
25th percentile	18	16	18	19	18	25th percentile	19	21	410	580
50th percentile	20	19	21	21	20	50th percentile	21	23	430	620
75th percentile	24	21	25	25	23	75th percentile	24	25	490	660
Average	20.9	19.2	21.5	22.0	20.6	Average	21.5	23.0	450.3	618.8
Minimum	12	12	7	13	13	Minimum	12	18	350	400
Maximum	32	28	35	34	33	Maximum	32	29	650	760

Fall 2016 ACT	Comp	Math	English	Reading	Science	Fall 2016 ACT & SAT	ACT & Conv SAT Comp¹	Conv SAT Comp	SAT VERB	SAT MATH
25th percentile	18	16	18	18	18	25th percentile	19	22	430	580
50th percentile	21	18	22	22	21	50th percentile	22	23	470	620
75th percentile	24	22	26	26	23	75th percentile	25	25	502	650
Average	21.4	19.4	22.2	22.4	21.0	Average	22.1	23.5	472.2	615.7
Minimum	14	12	10	10	12	Minimum	14	15	350	440
Maximum	32	35	35	35	33	Maximum	32	29	670	780

Fall 2017 ACT	Comp	Math	English	Reading	Science	Fall 2017 ACT & SAT	ACT & Conv SAT Comp¹	Conv SAT Comp	SAT VERB	SAT MATH
25th percentile	18	17	18	19	18	25th percentile	18	23	540	530
50th percentile	21	19	21	22	21	50th percentile	21	25	540	560
75th percentile	23	23	24	24	23	75th percentile	24	28	590	610
Average	21.2	19.7	21.5	22.0	20.9	Average	21.2	25.3	556.7	566.7
Minimum	14	14	7	13	10	Minimum	14	23	540	530
Maximum	30	28	35	36	34	Maximum	30	28	590	610

Fall 2018 ACT	Comp	Math	English	Reading	Science	Fall 2018 ACT & SAT	ACT & Conv SAT Comp¹	Conv SAT Comp	SAT VERB	SAT MATH
25th percentile	18	17	17	18	18	25th percentile	18	21	520	560
50th percentile	21	19	21	21	21	50th percentile	21	-	-	-
75th percentile	24	23	25	26	23	75th percentile	24	22	530	580
Average	21.5	20.2	21.7	22.3	21.0	Average	21.5	21.5	525.0	570.0
Minimum	14	14	9	12	13	Minimum	14	21	520	560
Maximum	34	33	35	35	35	Maximum	34	22	530	580

¹Includes both the ACT Composite Score and Converted SAT to ACT Composite Score.

This table now includes all first-time college students, both full-time and part-time, as well as bachelor's and associate's degree seeking.

First-time, Full-time Bachelor's Degree Seeking Freshman Cohort Retention & Graduation Rates | Table 1.6

Fall 2010 Cohort	Fall 2010	Fall 2011		Fall 2012		Fall 2013		Fall 2014		Fall 2015		Fall 2016		Fall 2017		Fall 2018	
Enrolled	192	144	75.0%	117	60.9%	107	55.7%	51	26.6%	13	6.8%	5	2.6%	3	1.6%	4	2.1%
Graduated		0	0.0%	0	0.0%	0	0.0%	50	26.0%	84	43.8%	91	47.4%	94	49.0%	95	49.5%
Total	192	144	75.0%	117	60.9%	107	55.7%	101	52.6%	97	50.5%	96	50.0%	97	50.5%	99	51.6%
Fall 2011 Cohort	Fall 2011	Fall 2012		Fall 2013		Fall 2014		Fall 2015		Fall 2016		Fall 2017		Fall 2018		Fall 2019	
Enrolled	174	128	73.6%	101	58.0%	93	53.4%	41	23.6%	12	6.9%	5	2.9%	4	2.3%		
Graduated		0	0.0%	0	0.0%	3	1.7%	44	25.3%	70	40.2%	77	44.3%	78	44.8%		
Total	174	128	73.6%	101	58.0%	96	55.2%	85	48.9%	82	47.1%	82	47.1%	82	47.1%		
Fall 2012 Cohort	Fall 2012	Fall 2013		Fall 2014		Fall 2015		Fall 2016		Fall 2017		Fall 2018		Fall 2019		Fall 2020	
Enrolled	182	144	79.1%	107	58.8%	103	56.6%	47	25.8%	16	8.8%	3	1.6%				
Graduated		0	0.0%	0	0.0%	0	0.0%	47	25.8%	76	41.8%	85	46.7%				
Total	182	144	79.1%	107	58.8%	103	56.6%	94	51.6%	92	50.5%	88	48.4%				
Fall 2013 Cohort	Fall 2013	Fall 2014		Fall 2015		Fall 2016		Fall 2017		Fall 2018		Fall 2019		Fall 2020		Fall 2021	
Enrolled	180	125	69.4%	97	53.9%	86	47.8%	40	22.2%	8	4.4%						
Graduated		0	0.0%	0	0.0%	2	1.1%	44	24.4%	66	36.7%						
Total	180	125	69.4%	97	53.9%	88	48.9%	84	46.7%	74	41.1%						
Fall 2014 Cohort	Fall 2014	Fall 2015		Fall 2016		Fall 2017		Fall 2018		Fall 2019		Fall 2020		Fall 2021		Fall 2022	
Enrolled	224	167	74.6%	119	53.1%	109	48.7%	31	13.8%								
Graduated		0	0.0%	0	0.0%	5	2.2%	79	35.3%								
Total	224	167	74.6%	119	53.1%	114	50.9%	110	49.1%								
Fall 2015 Cohort	Fall 2015	Fall 2016		Fall 2017		Fall 2018		Fall 2019		Fall 2020		Fall 2021		Fall 2022		Fall 2023	
Enrolled	233	138	59.2%	123	52.8%	118	50.6%										
Graduated		0	0.0%	0	0.0%	0	0.0%										
Total	233	138	59.2%	123	52.8%	118	50.6%										
Fall 2016 Cohort	Fall 2016	Fall 2017		Fall 2018		Fall 2019		Fall 2020		Fall 2021		Fall 2022		Fall 2023		Fall 2024	
Enrolled	278	165	59.4%	133	47.8%												
Graduated		0	0.0%	0	0.0%												
Total	278	165	59.4%	133	47.8%												
Fall 2017 Cohort	Fall 2017	Fall 2018		Fall 2019		Fall 2020		Fall 2021		Fall 2022		Fall 2023		Fall 2024		Fall 2025	
Enrolled	217	136	62.7%														
Graduated		0	0.0%														
Total	217	136	62.7%														

Enrolled status is determined using fall enrollment archived on the official census date.

Students receiving more than one degree are only counted once. This table does not count ASN degrees as completers.

The following first-time, full-time freshman cohorts have deceased students excluded from retention: 2011 - 1 student.

First-time, Full-time Bachelor's Degree Seeking Transfer Cohort Retention & Graduation Rates | Table 1.7

Fall 2010 Cohort	Fall 2010	Fall 2011		Fall 2012		Fall 2013		Fall 2014		Fall 2015		Fall 2016		Fall 2017		Fall 2018	
Enrolled	430	221	51.4%	115	26.7%	39	9.1%	9	2.1%	4	0.9%	1	0.2%	0	0.0%	1	0.2%
Graduated		95	22.1%	192	44.7%	262	60.9%	297	69.1%	302	70.2%	306	71.2%	306	71.2%	307	71.4%
Total	430	316	73.5%	307	71.4%	301	70.0%	306	71.2%	306	71.2%	307	71.4%	306	71.2%	308	71.6%
Fall 2011 Cohort	Fall 2011	Fall 2012		Fall 2013		Fall 2014		Fall 2015		Fall 2016		Fall 2017		Fall 2018		Fall 2019	
Enrolled	495	224	45.3%	102	20.6%	43	8.7%	15	3.0%	7	1.4%	6	1.2%	2	0.4%		
Graduated		155	31.3%	263	53.1%	323	65.3%	341	68.9%	353	71.3%	358	72.3%	361	72.9%		
Total	495	379	76.6%	365	73.7%	366	73.9%	356	71.9%	360	72.7%	364	73.5%	363	73.3%		
Fall 2012 Cohort	Fall 2012	Fall 2013		Fall 2014		Fall 2015		Fall 2016		Fall 2017		Fall 2018		Fall 2019		Fall 2020	
Enrolled	600	229	38.2%	112	18.7%	34	5.7%	21	3.5%	8	1.3%	5	0.8%				
Graduated		199	33.2%	323	53.8%	400	66.7%	425	70.8%	443	73.8%	446	74.3%				
Total	600	428	71.3%	435	72.5%	434	72.3%	446	74.3%	451	75.2%	451	75.2%				
Fall 2013 Cohort	Fall 2013	Fall 2014		Fall 2015		Fall 2016		Fall 2017		Fall 2018		Fall 2019		Fall 2020		Fall 2021	
Enrolled	578	217	37.5%	100	17.3%	28	4.8%	11	1.9%	9	1.6%						
Graduated		240	41.5%	352	60.9%	423	73.2%	444	76.8%	452	78.2%						
Total	578	457	79.1%	452	78.2%	451	78.0%	455	78.7%	461	79.8%						
Fall 2014 Cohort	Fall 2014	Fall 2015		Fall 2016		Fall 2017		Fall 2018		Fall 2019		Fall 2020		Fall 2021		Fall 2022	
Enrolled	655	246	37.6%	131	20.0%	42	6.4%	16	2.4%								
Graduated		272	41.5%	397	60.6%	475	72.5%	501	76.5%								
Total	655	518	79.1%	528	80.6%	517	78.9%	517	78.9%								
Fall 2015 Cohort	Fall 2015	Fall 2016		Fall 2017		Fall 2018		Fall 2019		Fall 2020		Fall 2021		Fall 2022		Fall 2023	
Enrolled	555	218	39.3%	97	17.5%	23	4.1%										
Graduated		222	40.0%	348	62.7%	412	74.2%										
Total	555	440	79.3%	445	80.2%	435	78.4%										
Fall 2016 Cohort	Fall 2016	Fall 2017		Fall 2018		Fall 2019		Fall 2020		Fall 2021		Fall 2022		Fall 2023		Fall 2024	
Enrolled	604	239	39.6%	109	18.0%												
Graduated		249	41.2%	359	59.4%												
Total	604	488	80.8%	468	77.5%												
Fall 2017 Cohort	Fall 2017	Fall 2018		Fall 2019		Fall 2020		Fall 2021		Fall 2022		Fall 2023		Fall 2024		Fall 2025	
Enrolled	651	302	46.4%														
Graduated		223	34.3%														
Total	651	525	80.6%														

Due to a change in IPEDS reporting, the 2007 - 2014 transfer cohorts have been redefined to include new transfers from the preceding summer.

Enrolled status is determined using fall enrollment archived on the official census date.

Students receiving more than one degree are only counted once. This table does not count ASN degrees as completers.

The following first-time, full-time transfer cohorts have deceased students excluded from retention: 2014 - 1 student, 2015 - 1 student.

Two administratively withdrawn students were removed from the 2010 cohort. One student was removed from the 2011 cohort after prior academic history at MUW was discovered.

Unduplicated Headcount and FTE Enrollment: Fall Terms | Table 2.1
Fall 2009 - 2018

	Undup Headcount	% Ch Yr Ago	Total Cr. Hrs.	% Ch Yr Ago	Total FTE	% Ch Yr Ago
Fall 2009	2,476	-	30,389	-	2,054	-
Fall 2010	2,587	4.48%	32,344	6.43%	2,183	6.26%
Fall 2011	2,661	2.86%	32,721	1.17%	2,207	1.11%
Fall 2012	2,650	-0.41%	33,687	2.95%	2,268	2.77%
Fall 2013	2,629	-0.79%	33,159	-1.57%	2,240	-1.24%
Fall 2014	2,696	2.55%	34,131	2.93%	2,300	2.68%
Fall 2015	2,673	-0.85%	33,511	-1.82%	2,263	-1.61%
Fall 2016	2,956	10.59%	36,708	9.54%	2,479	9.54%
Fall 2017	2,789	-5.65%	35,575	-3.09%	2,403	-3.07%
Fall 2018	2,711	-2.80%	34,228	-3.79%	2,311	-3.82%

Source: Fall enrollment archived on the official census date.

Duplicated Campus Headcount | Table 2.2
Fall 2014 - 2018

	Main Campus Headcount	# Ch Yr Ago	% Ch Yr Ago	Tupelo Campus Headcount	# Ch Yr Ago	% Ch Yr Ago
Fall 2014	2,300	-	-	499	-	-
Fall 2015	2,385	85	3.70%	421	-78	-15.63%
Fall 2016	2,610	225	9.43%	463	42	9.98%
Fall 2017	2,480	-130	-4.98%	424	-39	-8.42%
Fall 2018	2,410	-70	-2.82%	425	1	0.24%

Source: Fall enrollment archived on the official census date.

Students enrolled on Main campus may also be enrolled at the same time on Tupelo campus and vice versa.

Students enrolled in Italy, Hinds CC and Gulf CC count as Main campus

**Unduplicated Headcount and FTE Enrollment: Spring Terms | Table 2.3
Spring 2010 - 2019**

	Undup Headcount	% Ch Yr Ago	Total Cr. Hrs.	% Ch Yr Ago	Total FTE	% Ch Yr Ago
Spring 2010	2,433	-	28,846	-	1,950	-
Spring 2011	2,541	4.44%	31,008	7.49%	2,092	7.24%
Spring 2012	2,536	-0.20%	31,056	0.15%	2,095	0.17%
Spring 2013	2,596	2.37%	32,358	4.19%	2,180	4.05%
Spring 2014	2,507	-3.43%	30,992	-4.22%	2,093	-3.99%
Spring 2015	2,558	2.03%	31,908	2.96%	2,151	2.77%
Spring 2016	2,574	0.63%	31,922	0.04%	2,156	0.25%
Spring 2017	2,718	5.59%	33,326	4.40%	2,251	4.37%
Spring 2018	2,648	-2.58%	33,060	-0.80%	2,232	-0.82%
Spring 2019	2,595	-2.00%	32,766	-0.89%	2,212	-0.90%

Source: Spring enrollment archived on the official census date.

**Unduplicated Headcount and FTE Enrollment: Summer Terms | Table 2.4
Summer 2009 - 2018**

	Undup Headcount	% Ch Yr Ago	Total Cr. Hrs.	% Ch Yr Ago	Total FTE	% Ch Yr Ago
Summer 2009	1,144	-	7,650	-	534	-
Summer 2010	1,300	13.64%	10,070	31.63%	695	30.21%
Summer 2011	1,434	10.31%	12,188	21.03%	834	20.04%
Summer 2012	1,338	-6.69%	11,177	-8.30%	765	-8.27%
Summer 2013	1,245	-6.95%	10,085	-9.77%	692	-9.54%
Summer 2014	1,258	1.04%	11,375	12.79%	778	12.43%
Summer 2015	1,268	0.79%	11,639	2.32%	795	2.19%
Summer 2016	1,177	-7.18%	10,593	-8.99%	729	-8.29%
Summer 2017	1,142	-2.97%	10,334	-2.45%	708	-2.85%
Summer 2018	1,036	-9.28%	9,557	-7.52%	654	-7.64%

Source: Combined summer enrollment archived on the official census date for each summer term.

Unduplicated Enrollment by Gender | Table 2.5

Fall 2009 - 2018

Fall	Female			Male			Total	
	#	% of Total	% Ch Yr Ago	#	% of Total	% Ch Yr Ago	#	% Ch Yr Ago
2009	2,025	81.8%	-	451	18.2%	-	2,476	-
2010	2,133	82.5%	5.3%	454	17.5%	0.7%	2,587	4.5%
2011	2,207	82.9%	3.5%	454	17.1%	0.0%	2,661	2.9%
2012	2,203	83.1%	-0.2%	447	16.9%	-1.5%	2,650	-0.4%
2013	2,154	81.9%	-2.2%	475	18.1%	6.3%	2,629	-0.8%
2014	2,192	81.3%	1.8%	504	18.7%	6.1%	2,696	2.5%
2015	2,155	80.6%	-1.7%	518	19.4%	2.8%	2,673	-0.9%
2016	2,401	81.2%	11.4%	555	18.8%	7.1%	2,956	10.6%
2017	2,241	80.4%	-6.7%	548	19.6%	-1.3%	2,789	-5.6%
2018	2,167	79.9%	-3.3%	544	20.1%	-0.7%	2,711	-2.8%

Unduplicated Enrollment by Race/Ethnicity | Table 2.6

Fall 2009 - 2018

Fall	White			Black/ African-American			Other			Did Not Report		Total
	#	% of Total	% Ch Yr Ago	#	% of Total	% Ch Yr Ago	#	% of Total	% Ch Yr Ago	#	% of Total	
2009	1,459	58.9%	-	910	36.8%	-	107	4.3%	-	0	0.0%	2,476
2010	1,503	58.1%	3.0%	965	37.3%	6.0%	110	4.3%	2.8%	9	0.3%	2,587
2011	1,550	58.2%	3.1%	1,011	38.0%	4.8%	100	3.8%	-9.1%	0	0.0%	2,661
2012	1,557	58.7%	0.5%	993	37.5%	-1.8%	100	3.8%	0.0%	0	0.0%	2,650
2013	1,536	58.4%	-1.3%	970	36.9%	-2.3%	123	4.7%	23.0%	0	0.0%	2,629
2014	1,573	58.4%	2.4%	987	36.6%	1.8%	136	5.0%	10.6%	0	0.0%	2,696
2015	1,534	57.4%	-2.5%	965	36.1%	-2.2%	174	6.5%	27.9%	0	0.0%	2,673
2016	1,721	58.2%	12.2%	998	33.8%	3.4%	237	8.0%	36.2%	0	0.0%	2,956
2017	1,662	59.6%	-3.4%	960	34.4%	-3.8%	167	6.0%	-29.5%	0	0.0%	2,789
2018	1,606	59.2%	-3.4%	958	35.3%	-0.2%	147	5.4%	-12.0%	0	0.0%	2,711

Source: Fall enrollment archived on the official census date.

The "Other" category includes Hispanic/Latino, American Indian/Alaskan Native, Asian, Native Hawaiian/Pacific Islander, Multi-racial, and Non-resident Alien students.

Unduplicated Enrollment by Race/Ethnicity, Gender, & FT/PT Status | Table 2.7

Fall 2014 - 2018

Full-Time Status

	Black/African American			Other			White			Full-Time Total		
	Female	Male	Total	Female	Male	Total	Female	Male	Total	Female	Male	Total
Fall 2014	688	103	791	77	27	104	1,024	230	1,254	1,789	360	2,149
Fall 2015	638	91	729	65	61	126	1,015	200	1,215	1,718	352	2,070
Fall 2016	704	99	803	125	75	200	1,053	186	1,239	1,882	360	2,242
Fall 2017	709	109	818	88	34	122	1,052	238	1,290	1,849	381	2,230
Fall 2018	663	121	784	75	26	101	991	233	1,224	1,729	380	2,109

Part-Time Status

	Black/African American			Other			White			Part-Time Total		
	Female	Male	Total	Female	Male	Total	Female	Male	Total	Female	Male	Total
Fall 2014	174	22	196	13	19	32	216	103	319	403	144	547
Fall 2015	191	45	236	26	22	48	220	99	319	437	166	603
Fall 2016	165	30	195	21	16	37	333	149	482	519	195	714
Fall 2017	121	21	142	27	18	45	244	128	372	392	167	559
Fall 2018	145	29	174	28	18	46	265	117	382	438	164	602

University Total

	Black/African American			Other			White			Grand Total		
	Female	Male	Total	Female	Male	Total	Female	Male	Total	Female	Male	Total
Fall 2014	862	125	987	90	46	136	1,240	333	1,573	2,192	504	2,696
Fall 2015	829	136	965	91	83	174	1,235	299	1,534	2,155	518	2,673
Fall 2016	869	129	998	146	91	237	1,386	335	1,721	2,401	555	2,956
Fall 2017	830	130	960	115	52	167	1,296	366	1,662	2,241	548	2,789
Fall 2018	808	150	958	103	44	147	1,256	350	1,606	2,167	544	2,711

Source: Fall enrollment archived on the official census date.

The "Other" category includes Hispanic/Latino, American Indian/Alaskan Native, Asian, Native Hawaiian/Pacific Islander, Multi-racial, and Non-resident Alien students.

Unduplicated Enrollment and Credit Hour Production by FT/PT Status | Table 2.8

Fall 2009 - 2018

Unduplicated Fall Enrollment

Fall	Full-time					Part-time					Total
	Undergraduate		Graduate		Full-Time Total	Undergraduate		Graduate		Part-Time Total	
	#	% of Total	#	% of Total		#	% of Total	#	% of Total		
2009	1,758	71%	97	4%	1,855	514	21%	107	4%	621	2,476
2010	1,881	73%	83	3%	1,964	513	20%	110	4%	623	2,587
2011	1,937	73%	82	3%	2,019	541	20%	101	4%	642	2,661
2012	2,009	76%	84	3%	2,093	494	19%	63	2%	557	2,650
2013	1,945	74%	101	4%	2,046	484	18%	99	4%	583	2,629
2014	2,065	77%	84	3%	2,149	462	17%	85	3%	547	2,696
2015	1,976	74%	94	4%	2,070	494	18%	109	4%	603	2,673
2016	2,116	72%	126	4%	2,242	629	21%	85	3%	714	2,956
2017	2,113	76%	117	4%	2,230	464	17%	95	3%	559	2,789
2018	2,002	74%	107	4%	2,109	503	18%	99	4%	602	2,711

Fall Credit Hours by Student Level

Fall	Full-time					Part-time					Total
	Undergraduate		Graduate		Full-Time Total	Undergraduate		Graduate		Part-Time Total	
	#	% of Total	#	% of Total		#	% of Total	#	% of Total		
2009	25,580	84%	1,131	4%	26,711	3,097	10%	581	2%	3,678	30,389
2010	27,599	85%	988	3%	28,587	3,149	10%	608	2%	3,757	32,344
2011	27,799	85%	975	3%	28,774	3,375	10%	572	2%	3,947	32,721
2012	29,386	87%	976	3%	30,362	2,956	9%	369	1%	3,325	33,687
2013	28,476	85%	1,184	4%	29,660	2,921	9%	578	2%	3,499	33,159
2014	30,053	88%	1,002	3%	31,055	2,582	8%	494	1%	3,076	34,131
2015	29,129	87%	1,080	3%	30,209	2,644	8%	658	2%	3,302	33,511
2016	31,867	87%	1,420	4%	33,287	2,933	8%	488	1%	3,421	36,708
2017	31,461	88%	1,319	4%	32,780	2,241	6%	554	2%	2,795	35,575
2018	29,845	87%	1,206	4%	31,051	2,629	8%	548	1%	3,177	34,228

Source: Fall enrollment archived on the official census date.

Part-time is defined as UG enrolled 11 Cr. Hrs or less or GR enrolled 8 Cr. Hrs or less.

Full-time is defined as UG enrolled 12 Cr. Hrs or more or GR enrolled 9 Cr. Hrs or more.

Unduplicated Enrollment by Student Classification | Table 2.9
Fall 2009 - 2018 | Spring 2009 - 2018

	Fall 2009	Fall 2010	Fall 2011	Fall 2012	Fall 2013	Fall 2014	Fall 2015	Fall 2016	Fall 2017	Fall 2018
Undergraduate Total	2272	2394	2478	2503	2429	2527	2470	2745	2577	2505
Freshman	554	509	489	500	473	549	622	794	565	550
Sophomore	344	337	305	303	345	414	401	348	397	332
Junior	509	598	644	686	656	647	619	715	745	707
Senior	865	950	1040	1014	955	917	828	888	870	916
Graduate Total	204	193	183	147	200	169	203	211	212	206
Enrollment Total	2476	2587	2661	2650	2629	2696	2673	2956	2789	2711

Source: Fall enrollment archived on the official census date.

	Spring 2010	Spring 2011	Spring 2012	Spring 2013	Spring 2014	Spring 2015	Spring 2016	Spring 2017	Spring 2018	Spring 2019
Undergraduate Total	2221	2357	2346	2427	2296	2367	2365	2511	2441	2385
Freshman	476	433	395	413	375	463	491	616	485	467
Sophomore	267	280	245	206	243	227	276	243	224	221
Junior	501	524	518	627	444	466	466	479	571	508
Senior	977	1120	1188	1181	1234	1211	1132	1173	1161	1189
Graduate Total	212	184	190	169	211	191	209	207	207	210
Enrollment Total	2433	2541	2536	2596	2507	2558	2574	2718	2648	2595

Source: Spring enrollment archived on the official census date.

Unduplicated Enrollment by Credit Hours & Student Classification | Table 2.10
Fall 2018

Sem. Hours	Freshman		Sophomore		Junior		Senior		Graduate		Grand Total	
	HC	FTE	HC	FTE	HC	FTE	HC	FTE	HC	FTE	HC	FTE
1	2	0.1	0	0.0	1	0.1	4	0.3	2	0.2	9	0.6
2	0	0.0	0	0.0	0	0.0	2	0.3	0	0.0	2	0.3
3	187	37.4	4	0.8	4	0.8	24	4.8	17	4.3	236	48.1
4	10	2.7	0	0.0	1	0.3	7	1.9	3	1.0	21	5.8
6	72	28.8	6	2.4	13	5.2	50	20.0	64	32.0	205	88.4
7	6	2.8	2	0.9	3	1.4	7	3.3	5	2.9	23	11.3
8	4	2.1	0	0.0	1	0.5	5	2.7	8	5.3	18	10.7
9	2	1.2	8	4.8	9	5.4	36	21.6	31	23.3	86	56.3
10	1	0.7	1	0.7	9	6.0	10	6.7	5	4.2	26	18.2
11	1	0.7	3	2.2	5	3.7	3	2.2	9	8.3	21	17.1
12	22	17.6	48	38.4	121	96.8	145	116.0	28	28.0	364	296.8
13	23	19.9	30	26.0	82	71.1	64	55.5	34	36.8	233	209.3
14	39	36.4	12	11.2	25	23.3	23	21.5	0	0.0	99	92.4
15	67	67.0	109	109.0	265	265.0	285	285.0	0	0.0	726	726.0
16	49	52.3	53	56.5	77	82.1	109	116.3	0	0.0	288	307.2
17	47	53.3	18	20.4	22	24.9	23	26.1	0	0.0	110	124.7
18	14	16.8	32	38.4	54	64.8	83	99.6	0	0.0	183	219.6
19	3	3.8	6	7.6	12	15.2	27	34.2	0	0.0	48	60.8
20	1	1.3	0	0.0	3	4.0	3	4.0	0	0.0	7	9.3
21	0	0.0	0	0.0	0	0.0	6	8.4	0	0.0	6	8.4
Grand Total	550	344.93	332	319.33	707	670.6	916	830.07	206	146.17	2711	2311.1

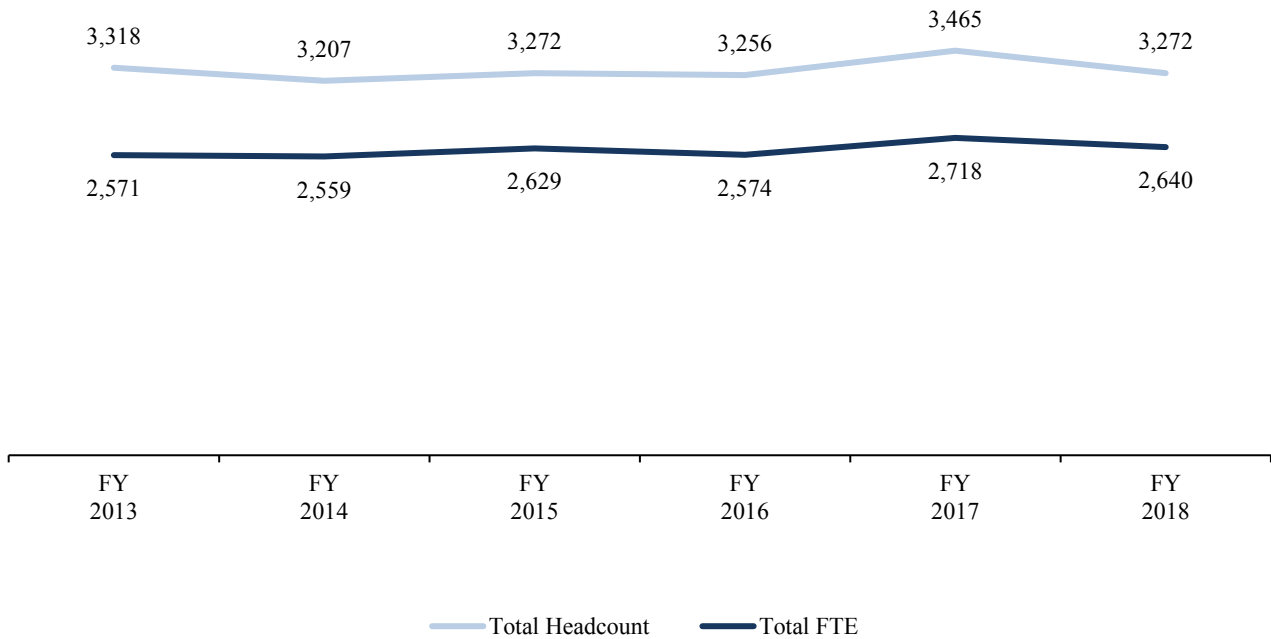
Source: Fall enrollment archived on the official census date.

Fiscal Year Headcount and FTE Enrollment | Table 2.11

FY 2013 - 2018

							FY 2013 - 2018	
	FY 2013	FY 2014	FY 2015	FY 2016	FY 2017	FY 2018	# Ch	% Ch
Undergraduate Headcount	3,090	2,921	3,033	2,981	3,200	3,020	-70	-2%
Undergraduate FTE	2,409	2,368	2,459	2,374	2,521	2,447	38	2%
Graduate Headcount	228	286	239	275	265	252	24	11%
Graduate FTE	162	191	170	200	197	193	31	19%
Total Headcount	3,318	3,207	3,272	3,256	3,465	3,272	-46	-1%
Total FTE	2,571	2,559	2,629	2,574	2,718	2,640	69	3%

Total Headcount vs Total FTE



Source: IPEDS 12-month Enrollment survey
 FY is defined as July 1 - June 30.

Unduplicated Enrollment by Age Distribution and Student Classification | Table 2.12
Fall 2018 vs Fall 2017

Age Group	Freshman		Sophomore		Junior		Senior		Graduate		Total	
	FA 18	FA 17	FA 18	FA 17	FA 18	FA 17	FA 18	FA 17	FA 18	FA 17	FA 18	FA 17
Under 18	224	227	0	1	0	0	0	0	0	0	224	228
18 and 19	267	292	93	110	14	17	3	2	0	0	377	421
20 and 21	41	27	135	174	357	358	220	203	2	0	755	762
22 to 24	8	7	35	48	154	145	321	288	47	45	565	533
25 to 29	5	5	17	19	66	86	149	140	52	67	289	317
30 to 34	3	0	16	20	53	51	74	79	32	37	178	187
35 to 39	0	2	16	8	25	34	46	45	26	17	113	106
40 to 49	0	1	15	13	27	49	69	77	32	34	143	174
50 to 64	1	3	4	4	10	5	27	29	14	12	56	53
65 and Over	1	1	1	0	1	0	7	7	1	0	11	8
Total	550	565	332	397	707	745	916	870	206	212	2711	2789

	Fall 2010	Fall 2011	Fall 2012	Fall 2013	Fall 2014	Fall 2015	Fall 2016	Fall 2017	Fall 2018
Average Age	26.1	26.7	26.6	26.2	25.9	25.2	24.5	24.7	24.6
Average Age Men	23.9	25.6	25.6	25.2	24.6	23.7	22.5	22.9	22.8
Average Age Women	26.6	27.0	26.8	26.5	26.3	25.6	25.0	25.1	25.1

Source: Fall enrollment archived on the official census date.

Unduplicated Enrollment by Non-traditional and Traditional Students | Table 2.13
Fall 2009 - 2018

Fall	Non-traditional						Traditional						Total
	Full-Time		Part-Time		Non-Trad. Total		Full-Time		Part-Time		Trad. Total		
	#	% of Total	#	% of Total	#	% of Total	#	% of Total	#	% of Total	#	% of Total	
2009	543	21.9%	354	14.3%	897	36.2%	1,312	53.0%	267	10.8%	1,579	63.8%	2,476
2010	652	25.2%	367	14.2%	1,019	39.4%	1,312	50.7%	256	9.9%	1,568	60.6%	2,587
2011	705	26.5%	396	14.9%	1,101	41.4%	1,314	49.4%	246	9.2%	1,560	58.6%	2,661
2012	760	28.7%	311	11.7%	1,071	40.4%	1,333	50.3%	246	9.3%	1,579	59.6%	2,650
2013	702	26.7%	315	12.0%	1,017	38.7%	1,344	51.1%	268	10.2%	1,612	61.3%	2,629
2014	754	28.0%	255	9.5%	1,009	37.5%	1,395	51.7%	292	10.8%	1,687	62.5%	2,696
2015	642	24.0%	259	9.7%	901	33.7%	1,428	53.4%	344	12.9%	1,772	66.3%	2,673
2016	683	23.1%	250	8.5%	933	31.6%	1,559	52.7%	464	15.7%	2,023	68.4%	2,956
2017	600	21.5%	245	8.8%	845	30.3%	1,630	58.4%	314	11.3%	1,944	69.7%	2,789
2018	569	21.0%	221	8.2%	790	29.2%	1,540	56.8%	381	14.0%	1,921	70.8%	2,711

Source: Fall enrollment archived on the official census date.

Non-traditional Students are defined as those who are at least 25 years of age.

Part-time is defined as UG enrolled 11 Cr. Hrs or less or GR enrolled 8 Cr. Hrs or less

Full-time is defined as UG enrolled 12 Cr. Hrs or more or GR enrolled 9 Cr. Hrs or more.

Residence Hall Student Enrollment | Table 2.14
Fall 2009 - 2018

Residence Hall	Fall 2009	Fall 2010	Fall 2011	Fall 2012	Fall 2013	Fall 2014	Fall 2015	Fall 2016	Fall 2017	Fall 2018
Callaway	102	89	92	107	107	110	110	113	118	108
Columbus	50	45	43	41	45	50	43	45	44	48
Frazier										
Goen										
Grossnickle	43	42	42	43	41	44	45	44	42	43
Hastings-Simmons	44	41	49	48	51	48	42	42	44	41
Jones	152	154	147	157	145	136	129	148	155	132
Kincannon	175	177	162	170	153	182	168	159	166	174
Total	566	548	535	566	542	570	537	551	569	546

Residence Hall Enrollment by Ethnicity and Gender
Fall 2018

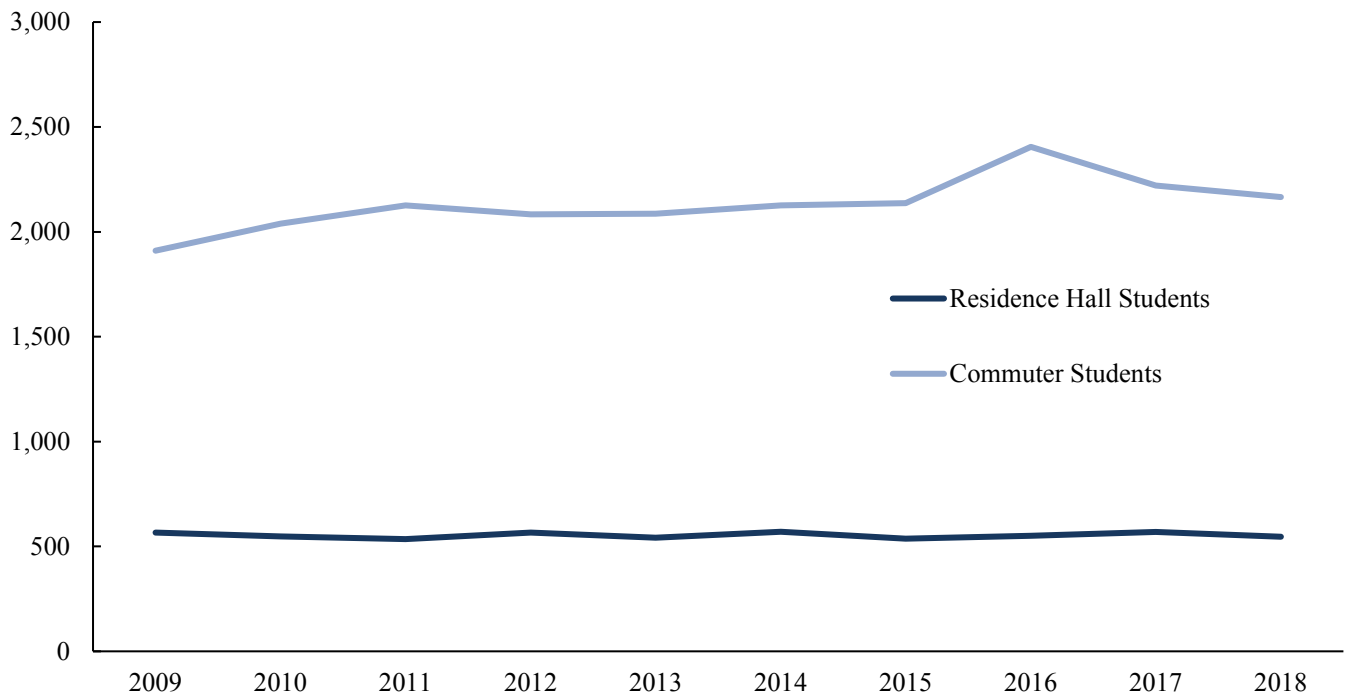
Residence Hall	Black	Other	White	Total	Residence Hall	Men	Women	Total
Callaway	58	2	48	108	Callaway	0	108	108
Columbus	25	5	18	48	Columbus	48	0	48
Grossnickle	5	2	36	43	Grossnickle	7	36	43
Hastings-Simmons	18	5	18	41	Hastings-Simmons	0	41	41
Jones	87	4	41	132	Jones	0	132	132
Kincannon	94	13	67	174	Kincannon	74	100	174
Total	287	31	228	546	Total	129	417	546

Source: Fall enrollment archived on the official census date.

The "Other" category includes Hispanic/Latino, American Indian/Alaskan Native, Asian, Native Hawaiian/Pacific Islander, Multi-racial, and Non-resident Alien students.

Unduplicated Enrollment by Residence Hall and Commuter Students | Table 2.15
Fall 2009 - 2018

Fall	Residence Hall Students			Commuter Students			Total
	#	% of Total	% Ch Yr Ago	#	% of Total	% Ch Yr Ago	
2009	566	22.9%	-	1,910	77.1%	-	2,476
2010	548	21.2%	-3.18%	2,039	78.8%	6.75%	2,587
2011	535	20.1%	-2.37%	2,126	79.9%	4.27%	2,661
2012	566	21.4%	5.79%	2,084	78.6%	-1.98%	2,650
2013	542	20.6%	-4.24%	2,087	79.4%	0.14%	2,629
2014	570	21.1%	5.17%	2,126	78.9%	1.87%	2,696
2015	537	20.1%	-5.79%	2,136	79.9%	0.47%	2,673
2016	551	18.6%	2.61%	2,405	81.4%	12.59%	2,956
2017	569	20.4%	3.27%	2,220	79.6%	-7.69%	2,789
2018	546	20.1%	-4.04%	2,165	79.9%	-2.48%	2,711

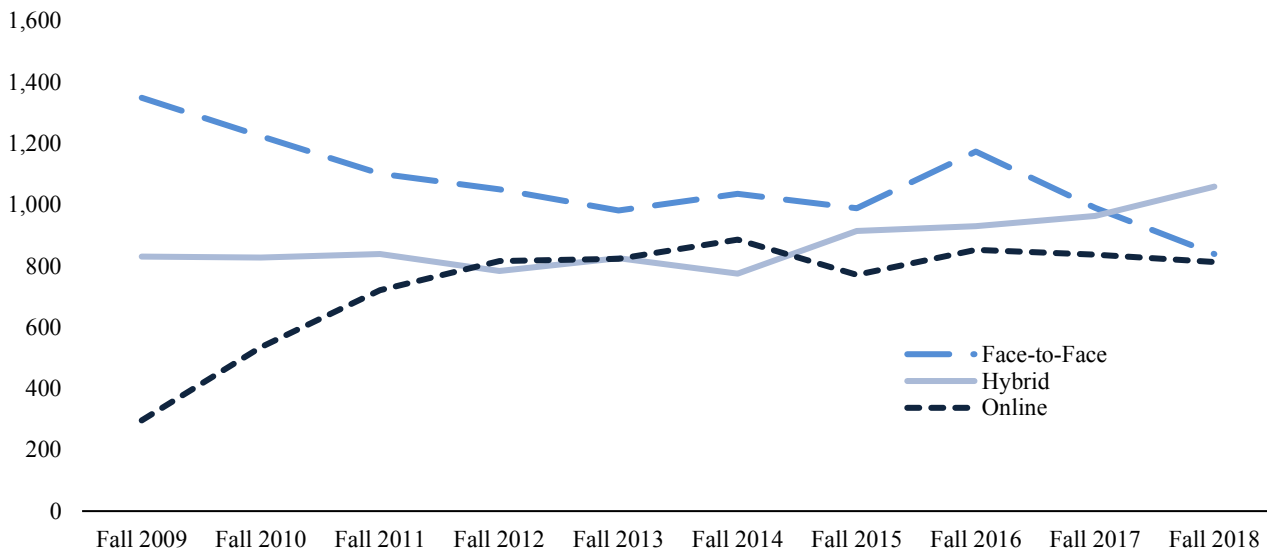


Source: Fall enrollment archived on the official census date.

Unduplicated Enrollment by Course Method | Table 2.16

Fall 2009 - 2018

	Online			Face-to-Face			Hybrid			Total
	#	% of Total	% Ch Yr Ago	#	% of Total	% Ch Yr Ago	#	% of Total	% Ch Yr Ago	
Fall 2009	296	12.0%	-	1,349	54.5%	-	831	33.6%	-	2,476
Fall 2010	535	20.7%	80.7%	1,224	47.3%	-9.3%	828	32.0%	-0.4%	2,587
Fall 2011	721	27.1%	34.8%	1,101	41.4%	-10.0%	839	31.5%	1.3%	2,661
Fall 2012	816	30.8%	13.2%	1,050	39.6%	-4.6%	784	29.6%	-6.6%	2,650
Fall 2013	823	31.3%	0.9%	981	37.3%	-6.6%	825	31.4%	5.2%	2,629
Fall 2014	886	32.9%	7.7%	1,035	38.4%	5.5%	775	28.7%	-6.1%	2,696
Fall 2015	771	28.8%	-13.0%	988	37.0%	-4.5%	914	34.2%	17.9%	2,673
Fall 2016	853	28.9%	10.6%	1,173	39.7%	18.7%	930	31.5%	1.8%	2,956
Fall 2017	837	30.0%	-1.9%	989	35.5%	-15.7%	963	34.5%	3.5%	2,789
Fall 2018	813	30.0%	-2.9%	839	30.9%	-15.2%	1059	39.1%	10.0%	2,711



Source: Fall enrollment archived on the official census date.

An online student is enrolled in only online courses.

A face-to-face student is enrolled in only face-to-face courses.

A hybrid student is enrolled in both online and face-to-face courses.

Unduplicated Enrollment by State of Residence | Table 2.17
Fall 2014 - 2018

State	Fall 2014	Fall 2015	Fall 2016	Fall 2017	Fall 2018	5 Yr # Ch
Alabama	145	165	168	214	204	59
Alaska	0	0	0	0	0	0
Arizona	1	1	2	1	0	-1
Arkansas	6	6	6	6	7	1
California	4	6	5	7	6	2
Colorado	1	2	1	1	1	0
Connecticut	0	0	0	0	1	1
Delaware	2	1	1	1	1	-1
District of Columbia	0	0	0	0	0	0
Florida	10	8	7	6	7	-3
Georgia	9	4	6	14	7	-2
Hawaii	0	0	0	0	0	0
Idaho	0	0	0	0	0	0
Illinois	0	2	7	4	3	3
Indiana	1	0	1	1	4	3
Iowa	1	0	0	0	0	-1
Kansas	1	0	0	0	0	-1
Kentucky	1	1	2	2	1	0
Louisiana	3	10	11	13	20	17
Maine	0	0	0	0	0	0
Maryland	3	3	4	5	2	-1
Massachusetts	0	1	0	0	1	1
Michigan	0	0	0	0	1	1
Minnesota	0	2	2	3	1	1
Mississippi	2387	2298	2520	2346	2302	-85
Missouri	4	2	0	1	2	-2
Montana	1	1	1	1	0	-1
Nebraska	0	0	0	0	0	0
Nevada	0	0	0	1	2	2
New Hampshire	0	1	1	1	0	0
New Jersey	0	1	3	1	1	1

Unduplicated Enrollment by State of Residence | Table 2.17
Fall 2014 - 2018

State	Fall 2014	Fall 2015	Fall 2016	Fall 2017	Fall 2018	5 Yr # Ch
New Mexico	0	0	0	0	2	2
New York	3	5	4	3	2	-1
North Carolina	1	4	4	4	3	2
North Dakota	0	0	0	0	0	0
Ohio	2	0	1	3	4	2
Oklahoma	0	0	1	3	3	3
Oregon	0	0	1	1	1	1
Pennsylvania	2	1	1	3	2	0
Rhode Island	0	0	0	0	0	0
South Carolina	1	1	1	5	3	2
South Dakota	0	0	0	0	1	1
Tennessee	39	39	32	42	35	-4
Texas	7	7	9	14	18	11
U. S. Citizen Residing Outside U. S.	0	0	0	0	0	0
Utah	0	0	1	0	0	0
Vermont	0	0	0	0	0	0
Virgin Islands of the United States	0	0	1	0	0	0
Virginia	1	0	1	3	2	1
Washington	2	1	0	1	2	0
West Virginia	0	0	0	0	0	0
Wisconsin	1	0	0	0	0	-1
Wyoming	0	0	0	0	0	0
Total U.S. Enrollment	2639	2573	2805	2711	2652	13

Source: Fall enrollment archived on the official census date.

Unduplicated Enrollment by Country | Table 2.18

Fall 2014 - 2018

Country	Fall 2014	Fall 2015	Fall 2016	Fall 2017	Fall 2018	5 Yr # Ch
Bahamas, The	0	0	0	1	1	1
Bulgaria	0	0	0	1	1	1
Canada	1	0	1	1	1	0
Chile	0	0	0	0	1	1
China	1	0	0	0	0	-1
Croatia	0	0	0	0	1	1
Egypt	0	0	0	0	1	1
El Salvador	0	0	0	0	1	1
France	0	0	0	1	1	1
Germany	0	0	0	0	1	1
Ghana	1	1	0	0	0	-1
India	0	0	1	0	0	0
Italy	0	1	1	1	1	1
Jamaica	0	0	1	1	0	0
Japan	0	0	1	1	1	1
Kenya	1	2	1	1	1	0
Korea, South	1	1	0	0	1	0
Lithuania	0	0	1	0	0	0
Macedonia	0	0	1	1	1	1
Malawi	0	1	1	1	1	1
Mexico	0	0	0	0	1	1
Nepal	41	89	138	64	40	-1
Netherlands Antilles	0	0	0	0	1	1
Nigeria	6	3	3	1	1	-5
Philippines	0	0	0	1	0	0
Romania	0	1	1	1	1	1
Rwanda	1	0	0	0	0	-1
Spain	0	1	0	0	0	0
Sri Lanka	2	0	0	0	0	-2
Taiwan (Republic of China)	0	0	0	1	0	0
Uganda	1	0	0	0	0	-1
Venezuela	1	0	0	0	0	-1
Total Foreign Students	57	100	151	78	59	
Countries Represented	11	9	12	15	20	

Source: Fall enrollment archived on the official census date.

Unduplicated Enrollment by MS County | Table 2.19
Fall 2014 - 2018

County	Fall 2014	Fall 2015	Fall 2016	Fall 2017	Fall 2018	5 Yr # Ch
Adams	5	5	3	6	4	-1
Alcorn	31	29	34	27	29	-2
Amite	2	1	0	0	0	-2
Attala	17	16	25	20	24	7
Benton	4	3	5	7	3	-1
Bolivar	20	26	28	23	26	6
Calhoun	17	16	16	14	18	1
Carroll	5	4	3	3	3	-2
Chickasaw	42	38	33	44	42	0
Choctaw	21	14	13	11	8	-13
Claiborne	1	4	2	3	3	2
Clarke	9	9	6	9	7	-2
Clay	94	98	84	89	91	-3
Coahoma	13	12	8	12	9	-4
Copiah	11	9	13	9	11	0
Covington	2	2	3	2	1	-1
DeSoto	70	68	70	50	70	0
Forrest	5	8	19	14	22	17
Franklin	3	4	3	3	4	1
George	6	6	9	11	10	4
Greene	0	4	4	1	1	1
Grenada	14	12	16	18	18	4
Hancock	8	2	1	5	8	0
Harrison	29	31	36	31	33	4
Hinds	103	82	93	109	98	-5
Holmes	8	11	16	17	13	5
Humphreys	3	2	3	2	1	-2
Issaquena	2	1	0	0	0	-2
Itawamba	31	29	38	46	25	-6
Jackson	31	41	37	25	26	-5
Jasper	5	3	1	5	7	2

Unduplicated Enrollment by MS County | Table 2.19
Fall 2014 - 2018

County	Fall 2014	Fall 2015	Fall 2016	Fall 2017	Fall 2018	5 Yr # Ch
Jefferson	0	1	2	1	0	0
Jefferson Davis	1	1	1	0	2	1
Jones	17	18	13	8	5	-12
Kemper	6	10	15	12	11	5
Lafayette	18	14	22	21	15	-3
Lamar	11	17	18	15	12	1
Lauderdale	72	60	58	59	63	-9
Lawrence	5	4	9	6	7	2
Leake	10	4	9	13	10	0
Lee	131	126	131	126	122	-9
Leflore	21	32	30	21	31	10
Lincoln	11	11	7	10	16	5
Lowndes	644	631	758	582	562	-82
Madison	53	47	55	46	40	-13
Marion	6	5	6	5	4	-2
Marshall	18	17	20	17	18	0
Monroe	120	119	112	123	107	-13
Montgomery	11	11	12	19	14	3
Neshoba	21	20	17	18	21	0
Newton	14	14	23	26	24	10
Noxubee	39	29	31	30	36	-3
Oktibbeha	149	134	129	150	158	9
Panola	16	12	12	14	5	-11
Pearl River	4	8	13	11	15	11
Perry	3	4	3	2	2	-1
Pike	5	19	11	10	4	-1
Pontotoc	42	28	33	27	29	-13
Prentiss	14	17	20	25	19	5
Quitman	4	4	4	1	0	-4
Rankin	74	73	80	77	82	8
Scott	5	8	13	14	11	6

Unduplicated Enrollment by MS County | Table 2.19
Fall 2014 - 2018

County	Fall 2014	Fall 2015	Fall 2016	Fall 2017	Fall 2018	5 Yr # Ch
Sharkey	0	1	0	0	2	2
Simpson	5	2	1	5	4	-1
Smith	5	3	2	3	4	-1
Stone	8	3	7	6	7	-1
Sunflower	18	17	22	21	26	8
Tallahatchie	0	2	5	7	9	9
Tate	19	20	13	15	6	-13
Tippah	15	15	14	10	10	-5
Tishomingo	11	10	13	14	12	1
Tunica	1	0	0	1	2	1
Union	21	21	28	20	29	8
Walthall	1	0	1	1	1	0
Warren	14	11	15	17	14	0
Washington	41	33	28	27	33	-8
Wayne	3	7	7	7	3	0
Webster	16	11	17	27	23	7
Wilkinson	1	0	0	0	0	-1
Winston	38	37	38	41	35	-3
Yalobusha	3	7	5	4	7	4
Yazoo	10	10	15	15	15	5
Total MS Enrollment	2387	2298	2520	2346	2302	-85
MS Counties Represented	78	79	77	77	77	-1

Source: Fall enrollment archived on the official census date.

Unduplicated Enrollment by IHL Official Academic Program Inventory (API) | Table 2.20
Fall 2018

Associate of Science	120	Bachelor of Science (Cont.)	
513801 Nursing	120	270101 Mathematics	12
Bachelor of Applied Science	119	400101 Physical Sciences	1
520201 Business Administration	112	512207 Public Health Education	263
512207 Public Health Education	7	450101 Social Sciences ¹	1
Bachelor of Arts	233	510203 Speech Pathology	78
090101 Communications	19	Bachelor of Science in Nursing	475
230101 English	43	513801 Nursing	475
240101 General Studies ¹	1	Master of Arts	5
540101 History	37	050207 Women's Leadership	5
309999 Interdisciplinary Studies	0	Master of Arts in Teaching	6
220302 Legal Studies	17	131205 Secondary Teacher Education	6
270101 Mathematics	0	Master of Business Administration	13
500901 Music	12	520201 Business Administration	13
451001 Political Science	6	Master of Education	13
420101 Psychology	77	130101 Education	6
450101 Social Sciences ¹	0	130401 Educational Leadership ¹	0
160905 Spanish	5	131004 Gifted Studies ¹	5
500101 Theatre	14	131315 Reading/Literacy ¹	2
050207 Women's Studies	2	Master of Fine Arts	48
Bachelor of Business Administration	100	231302 Creative Writing	40
520201 Business Administration	100	500506 Physical Theatre ¹	8
Bachelor of Fine Arts	50	Master of Public Health	38
131302 Art Education ¹	3	512201 Public Health	38
500101 Fine Arts	47	Master of Science	28
Bachelor of Music	31	510203 Speech-Language Pathology	28
500901 Music	31	Master of Science in Nursing	30
Bachelor of Professional Studies	11	513899 Family Nurse Clinician	30
240199 Professional Studies	11	Doctor of Nursing Practice	9
Bachelor of Science	1047	513818 Nursing Practice	9
520301 Accounting ¹	36	Undeclared	332
260101 Biology	86	Unclassified - Graduate	13
520201 Business Administration ¹	158	Undeclared - Degree Seeking	22
400501 Chemistry	9	Undeclared - Non-Degree Seeking	297
090101 Communications	14	Certificate Programs	3
120599 Culinary Arts	67	513805 Post-Graduate Advanced- -Practice Registered Nurse	0
120509 Culinary Science/Culinology	0	Add-on Certificates	
131202 Elementary Education	19	Gifted Studies-Certification	1
190704 Family Studies	31	Reading/Literacy Certificate	2
240101 General Studies ¹	10	Total Enrollment	2711
309999 Interdisciplinary Studies	104		
310501 Kinesiology	125		
220302 Legal Studies	33		

¹The following programs are being phased out.

Source: Fall enrollment archived on the official census date.

**Unduplicated Enrollment by IHL Official Academic Program Inventory (API) | Table 2.21
Spring 2019**

Associate of Science	110	Bachelor of Science (Cont.)	
513801 Nursing	110	400101 Physical Sciences	1
Bachelor of Applied Science	107	512207 Public Health Education	259
520201 Business Administration	101	510203 Speech Pathology	70
512207 Public Health Education	6	Bachelor of Science in Nursing	467
Bachelor of Arts	211	513801 Nursing	467
090101 Communications	17	Master of Arts	6
230101 English	43	050207 Women's Leadership	6
240101 General Studies ¹	1	Master of Arts in Teaching	7
540101 History	31	131205 Secondary Teacher Education	7
309999 Interdisciplinary Studies	0	Master of Business Administration	14
220302 Legal Studies	13	520201 Business Administration	14
270101 Mathematics	0	Master of Education	14
500901 Music	11	130101 Education	8
451001 Political Science	6	131004 Gifted Studies ¹	4
420101 Psychology	73	131315 Reading/Literacy ¹	2
160905 Spanish	3	Master of Fine Arts	39
500101 Theatre	11	231302 Creative Writing	39
050207 Women's Studies	2	500506 Physical Theatre ¹	0
Bachelor of Business Administration	155	Master of Public Health	32
520201 Business Administration	155	512201 Public Health	32
Bachelor of Fine Arts	43	Master of Science	28
131302 Art Education ¹	3	510203 Speech-Language Pathology	28
500101 Fine Arts	40	Master of Science in Nursing	29
Bachelor of Music	29	513899 Family Nurse Clinician	29
500901 Music	29	Doctor of Nursing Practice	10
Bachelor of Professional Studies	16	513818 Nursing Practice	10
240199 Professional Studies	16	Undeclared	344
Bachelor of Science	932	Unclassified - Graduate	29
520301 Accounting ¹	29	Undeclared - Degree Seeking	14
260101 Biology	86	Undeclared - Non-Degree Seeking	301
520201 Business Administration ¹	86	Certificate Programs	2
400501 Chemistry	8	513805 Post-Graduate Advanced- -Practice Registered Nurse	0
090101 Communications	9	Add-on Certificates	
120599 Culinary Arts	59	Gifted Studies-Certification	1
131202 Elementary Education	23	Reading/Literacy Certificate	1
190704 Family Studies	26	Total Enrollment	2595
240101 General Studies ¹	8		
309999 Interdisciplinary Studies	107		
310501 Kinesiology	117		
220302 Legal Studies	35		
270101 Mathematics	9		

¹These programs are being phased out.

Source: Spring enrollment archived on the official census date.

Unduplicated Enrollment by College & Department | Table 3.1
Fall 2014 - 2018

College / Department	2014	2015	2016	2017	2018	5 Yr # Ch	5 Yr % Ch
Total Fall Enrollment	2,696	2,673	2,956	2,789	2,711	15	1%
College of Arts, Sciences, & Education	649	670	721	680	648	-1	0%
Art & Design	58	49	56	58	50	-8	-14%
Communication	39	44	48	42	33	-6	-15%
Education	162	152	149	40	41	-121	-75%
History, Political Science, and Geography	38	40	35	155	148	110	289%
Languages, Literature, & Philosophy	69	74	78	89	95	26	38%
Music	33	32	44	44	43	10	30%
Psychology & Family Studies	103	104	121	106	108	5	5%
Sciences & Mathematics	114	138	153	113	108	-6	-5%
Theatre	33	37	37	33	22	-11	-33%
College of Business & Professional Studies	442	476	513	566	562	120	27%
Business	308	353	388	448	445	137	44%
Culinary Arts	103	92	91	74	67	-36	-35%
Legal Studies	31	31	34	44	50	19	61%
College of Nursing & Health Sciences	1,321	1,215	1,257	1,236	1,173	-148	-11%
Associate Nursing	177	184	153	120	120	-57	-32%
Baccalaureate Nursing	709	642	680	489	475	-234	-33%
Graduate Nursing	47	49	44	46	39	-8	-17%
Health & Kinesiology	289	239	276	470	433	144	50%
Speech-Language Pathology	99	101	104	111	106	7	7%
University	284	312	465	307	328	44	15%

Source: Fall enrollment archived on the official census date.

Prior to fall 2017, the Departments of Education, Psychology & Family Studies, and Health & Kinesiology were housed in the College of Education & Human Sciences. That college has been dissolved.

Unduplicated Enrollment by College, Department, & Major/Concentration | Table 3.2

Fall 2014 - 2018

College/ Department	Major/Concentration	Degree	2014	2015	2016	2017	2018	5 Yr # Ch	5 Yr % Ch
College of Arts, Sciences, & Education			649	670	721	680	648	-1	0%
Art & Design	Art Education ¹	BFA	3	3	10	5	3	0	0%
	Fine Art ^{1,2}	BA	35	26	0	0	0	-35	-100%
	Fine Arts - Studio Art ²	BFA	15	8	14	30	26	11	73%
	Fine Arts - Studio - Graphic ²	BFA	5	12	24	23	21	16	320%
	Pre-Fine Arts - St-Graphic ²	BFA	0	0	4	0	0	0	-
	Pre-Fine Arts - Studio Art ²	BFA	0	0	4	0	0	0	-
	Department Total			58	49	56	58	50	-8
Communication	Communication	BA, BS	39	44	48	42	33	-6	-15%
	Department Total		39	44	48	42	33	-6	-15%
Education ²	Differentiated Instruction ¹	MEd	0	1	0	0	0	0	-
	Education ²	MEd	0	0	0	0	6	6	-
	Educational Leadership ^{1,2}	MEd	9	8	6	6	0	-9	-100%
	Elementary Education ²	BS	127	121	118	13	19	-108	-85%
	Gifted Studies ^{1,2}	MEd	4	4	6	6	5	1	25%
	Gifted Studies - Certification	O	9	3	4	2	1	-8	-89%
	Reading/Literacy ^{1,2}	MEd	13	15	14	7	2	-11	-85%
	Reading/Literacy Certificate	O	0	0	0	3	2	2	-
	Secondary Teacher Ed (Alt Rte) ²	MAT	0	0	1	3	6	6	-
Department Total			162	152	149	40	41	-121	-75%
History, Political Science, & Geography	History	BA	8	12	10	15	25	17	213%
	History - Public History	BA	1	1	1	2	1	0	0%
	History - Teacher Certification	BA	5	5	6	12	11	6	120%
	Interdisciplinary Studies ²	BA, BS	2	3	6	113	104	102	5100%
	Political Science	BA	10	10	8	11	6	-4	-40%
	Public Administration Cert	O	0	0	0	0	0	0	-
	Social Sciences ¹	BA, BS	4	6	3	1	1	-3	-75%
	Social Sciences - Teacher Cert ¹	BA, BS	8	3	1	1	0	-8	-100%
Department Total			38	40	35	155	148	110	289%

Unduplicated Enrollment by College, Department, & Major/Concentration | Table 3.2
Fall 2014 - 2018

College/ Department	Major/Concentration	Degree	2014	2015	2016	2017	2018	5 Yr # Ch	5 Yr % Ch
Languages, Literature, & Philosophy	Creative Writing	MFA	0	11	25	28	40	40	-
	English	BA	19	14	15	23	17	-2	-11%
	English - Creative Writing	BA	25	22	15	15	15	-10	-40%
	English - Teacher Certification	BA	22	20	15	13	11	-11	-50%
	Spanish	BA	2	2	0	1	3	1	50%
	Spanish - Teaching	BA	0	1	1	1	2	2	-
	Women's Leadership	MA	0	3	5	6	5	5	-
	Women's Studies	BA	1	1	2	2	2	1	100%
	Department Total			69	74	78	89	95	26
Music	Music	BA	5	6	7	7	12	7	140%
	Music - Music Education	BM	9	8	18	18	14	5	56%
	Music - Music Therapy	BM	19	18	19	19	17	-2	-11%
	Department Total		33	32	44	44	43	10	30%
Psychology & Family Studies ²	Family Studies	BS	36	38	39	25	31	-5	-14%
	Psychology	BA	67	66	82	81	77	10	15%
	Department Total		103	104	121	106	108	5	5%
Sciences & Mathematics	Biology	BS	81	93	110	79	83	2	2%
	Biology - Teacher Certification	BA, BS	1	1	5	3	3	2	200%
	Chemistry	BS	13	11	9	9	9	-4	-31%
	Mathematics	BA, BS	12	18	12	13	7	-5	-42%
	Mathematics - Pre-Engineering ¹	BA, BS	0	3	12	0	0	0	-
	Mathematics - Teacher Cert	BA, BS	6	7	4	8	5	-1	-17%
	Physical Science - Teacher Cert	BS	1	5	1	1	1	0	0%
	Department Total		114	138	153	113	108	-6	-5%
Theatre	Physical Theatre ¹	MFA	13	26	24	22	8	-5	-38%
	Theatre	BA	20	11	11	9	10	-10	-50%
	Theatre - Theatre Education	BA	0	0	2	2	4	4	-
	Department Total		33	37	37	33	22	-11	-33%

Unduplicated Enrollment by College, Department, & Major/Concentration | Table 3.2

Fall 2014 - 2018

College/ Department	Major/Concentration	Degree	2014	2015	2016	2017	2018	5 Yr # Ch	5 Yr % Ch
College of Business & Professional Studies			442	476	513	566	562	120	27%
Business	Accounting ^{1,2}	BS	51	49	53	49	36	-15	-29%
	Business Administration ²	MBA	0	0	15	15	13	13	-
	Business Admin - Accounting ²	BBA	0	0	0	0	10	10	-
	Bus Admin - Cul Art - Main	BAS	0	0	11	10	11	11	-
	Bus Admin - Culin Art - Gulf	BAS	0	0	4	2	6	6	-
	Bus Admin - Culin Art - Hinds	BAS	0	0	7	8	4	4	-
	Business Admin - Entrepreneurship ¹	BS	10	4	1	0	0	-10	-100%
	Business Admin - General Bus	BAS, BBA, & BS ¹	86	77	97	129	109	23	27%
	Bus Admin - Health Care Mgt	BAS, BBA, & BS ¹	0	28	53	85	97	97	-
	Business Admin - Human Res Mgt	BAS, BBA, & BS ¹	0	2	15	26	31	31	-
	Bus Admin - Legal Admin	BAS	0	0	6	14	10	10	-
	Business Admin - Management	BAS, BBA, & BS ¹	30	28	25	26	30	0	0%
	Business Admin - Marketing	BBA, BS ¹	17	18	13	16	22	5	29%
	Business Admin - MIS	BAS, BBA, & BS ¹	30	52	72	51	40	10	33%
	General Studies ^{1,2}	BA, BS	0	0	0	15	11	11	-
	Global Commerce ²	MS	13	12	0	0	0	-13	-100%
	Professional Studies	BPS	0	0	0	0	11	11	-
	Prof Studies - Cul Art - Main ²	BT	2	5	0	0	0	-2	-100%
	Prof Studies - Culin Art - Gulf ²	BT	3	6	0	0	0	-3	-100%
	Prof Studies - Culin Art - Hinds ²	BT	3	4	0	0	0	-3	-100%
	Prof Studies - Gen Business ²	BT	23	19	0	0	0	-23	-100%
	Prof Studies - Health Care Mgt ²	BT	0	3	0	0	0	0	-
	Prof Studies - Human Res ²	BT	10	9	0	0	0	-10	-100%
	Prof Studies - Legal Admin ²	BT	9	8	0	0	0	-9	-100%
	Prof Studies - Mgt Info Sys ²	BT	16	13	0	0	0	-16	-100%
	Pub-Safety Ad/FSM/Gen Bus ¹	BA, BS	2	2	0	1	0	-2	-100%

Unduplicated Enrollment by College, Department, & Major/Concentration | Table 3.2

Fall 2014 - 2018

College/ Department	Major/Concentration	Degree	2014	2015	2016	2017	2018	5 Yr # Ch	5 Yr % Ch
Business (Cont.)	Pub-Safety Ad/FSM/Law & Gov ¹	BA, BS	1	0	0	0	0	-1	-100%
	Unclassified - Graduate	O	0	0	0	0	4	4	-
	Undeclared - Undergraduate	BAS	0	0	16	1	0	0	-
	Undeclared - Undergraduate ²	BT	2	14	0	0	0	-2	-100%
	Department Total		308	353	388	448	445	137	44%
Culinary Arts	Culinary Arts	BS	103	92	91	74	67	-36	-35%
	Department Total		103	92	91	74	67	-36	-35%
Legal Studies	Legal Studies	BA, BS	31	31	34	44	50	19	61%
	Department Total		31	31	34	44	50	19	61%
College of Nursing & Health Sciences			1,321	1,215	1,257	1,236	1,173	-148	-11%
Associate Nursing	Associate of Science Nursing	ASN	109	109	104	120	120	11	10%
	Pre-Nursing ASN ²	ASN	68	75	49	0	0	-68	-100%
	Department Total		177	184	153	120	120	-57	-32%
Baccalaureate Nursing	Bachelor of Science Nursing	BSN	120	138	136	138	146	26	22%
	Nursing - BSN - Tupelo	BSN	439	355	385	351	329	-110	-25%
	Pre-Nursing BSN ²	BSN	136	138	138	0	0	-136	-100%
	Pre-Nursing BSN - Tupelo ¹	BSN	14	11	21	0	0	-14	-100%
	Department Total		709	642	680	489	475	-234	-33%
Graduate Nursing	Family Nurse Practitioner	MSN	37	35	31	38	30	-7	-19%
	Nursing Practice	DNP	4	11	13	8	9	5	125%
	Post - Graduate Adv Pr Reg Nurse	PMC	0	0	0	0	0	0	-
	Post Masters Certificate Nursing ¹	PMC	5	1	0	0	0	-5	-100%
	Psychiatric Mental Health ¹	MSN	1	0	0	0	0	-1	-100%
	Unclassified - Graduate	O	0	2	0	0	0	0	-
	Department Total		47	49	44	46	39	-8	-17%
Health & Kinesiology ²	General Studies ^{1,2}	BA, BS	33	19	17	0	0	-33	-100%
	Health Education ²	MS	37	46	39	0	0	-37	-100%
	Kinesiology - Exercise Science ²	BS	31	25	51	96	89	58	187%
	Kinesiology - Exer Sci - Phys Ther ¹²	BS	62	38	31	26	35	-27	-44%

Unduplicated Enrollment by College, Department, & Major/Concentration | Table 3.2
Fall 2014 - 2018

College/ Department	Major/Concentration	Degree	2014	2015	2016	2017	2018	5 Yr # Ch	5 Yr % Ch
Health & Kinesiology ² (Cont.)	Kinesiology - Teaching	BS	11	7	6	1	1	-10	-91%
	Pre-Occupational Therapy ²	BS	4	4	8	0	0	-4	-100%
	Public Health ²	MPH	0	0	0	35	38	38	-
	Public Health Education	BAS, BS	111	100	124	312	270	159	143%
Department Total			289	239	276	470	433	144	50%
Speech-Language Pathology	Speech-Language Pathology	BS	75	76	76	86	78	3	4%
	Speech-Language Pathology	MS	24	25	28	25	28	4	17%
	Department Total			99	101	104	111	106	7
University			284	312	465	307	328	44	15%
University	Undeclared - Undergraduate	BS, O	284	312	465	299	319	35	12%
	Unclassified - Graduate	O	0	0	0	8	9	9	-
	University Total			284	312	465	307	328	44
Total Enrollment			2,696	2,673	2,956	2,789	2,711	15	1%

Source: Fall enrollment archived on the official census date.

¹These Degrees, Programs, or Concentrations are being phased out.

²For detailed changes, see Appendix A: Endnotes

Unduplicated Enrollment by Minor | Table 3.3

Fall 2014 - 2018

College/ Department	Minor Description	Minor Code	2014	2015	2016	2017	2018	5 Yr # Ch	5 Yr % Ch
College of Arts, Sciences, & Education			109	110	107	111	83	-26	-24%
Art & Design	General Art	GA	3	1	0	0	0	-3	-100%
	Studio Art	SA	0	0	3	4	3	3	-
	Department Total		3	1	3	4	3	0	0%
Communication	Communication	COM	2	6	4	3	2	0	0%
	Film Studies	FILM	5	6	10	5	3	-2	-40%
	Department Total		7	12	14	8	5	-2	-29%
History, Political Science, & Geography	History	HIS	7	5	2	4	2	-5	-71%
	IS-American Studies ¹	AMST	4	4	1	0	0	-4	-100%
	IS-International Studies ¹	INTL	3	1	1	0	0	-3	-100%
	IS-Medieval & Ren Studies ¹	MRS	0	3	2	2	0	0	-
	Political Science	POL	1	0	1	6	5	4	400%
	Department Total		15	13	7	12	7	-8	-53%
Languages, Literature, & Philosophy	English	ENG	5	6	3	1	3	-2	-40%
	English - Creative Writing	ENCW	1	2	3	4	4	3	300%
	French	FRN	0	2	1	1	1	1	-
	Philosophy	PHL	0	2	2	3	0	0	-
	Religious Studies	RELS	5	5	1	4	3	-2	-40%
	Spanish	SPN	7	9	9	8	7	0	0%
	Women's Studies	WS	3	3	3	3	2	-1	-33%
	Department Total		21	29	22	24	20	-1	-5%
Music	Music	MUS	12	9	7	7	6	-6	-50%
	Department Total		12	9	7	7	6	-6	-50%
Psychology & Family Studies ²	Family Studies	FS	8	4	6	10	4	-4	-50%
	Psychology	PSY	29	37	29	28	22	-7	-24%
	Department Total		37	41	35	38	26	-11	-30%

Unduplicated Enrollment by Minor | Table 3.3

Fall 2014 - 2018

College/ Department	Minor Description	Minor Code	2014	2015	2016	2017	2018	5 Yr # Ch	5 Yr % Ch
Sciences & Mathematics	Biology	BSB	3	0	6	5	0	-3	-100%
	Chemistry	PSC	6	4	7	8	9	3	50%
	Mathematics	MA	3	1	3	2	6	3	100%
	Department Total		12	5	16	15	15	3	25%
Theatre	Theatre	THEA	2	0	3	3	1	-1	-50%
	Department Total		2	0	3	3	1	-1	-50%
College of Business & Professional Studies			60	60	52	51	35	-25	-42%
Business	Accounting	ACC	1	0	0	3	0	-1	-100%
	Business	BUS	10	12	0	0	0	-10	-100%
	Business Admin-Entrepreneurship	ENTR	1	1	1	0	0	-1	-100%
	Business Admin - General Bus	GB	1	3	14	9	9	8	800%
	Business Admin - Health Care Mgt	HCM	0	2	1	5	6	6	-
	Business Admin - Human Res Mgt	HRM	0	2	2	2	0	0	-
	Business Admin - Management	MGT	3	0	1	1	1	-2	-67%
	Business Admin - MIS	MIS	5	5	10	8	4	-1	-20%
	Business Admin - Marketing	MKT	8	9	8	8	10	2	25%
	Leadership Studies	LDS	0	0	0	0	1	1	-
	Department Total		29	34	37	36	31	2	7%
Culinary Arts	Culinary Arts	CA	3	1	0	0	0	-3	-100%
	Culinary Entrepreneurship	CAEN	12	10	7	3	0	-12	-100%
	Culinology	CUL	0	0	1	0	0	0	-
	Food Art	FDAR	4	4	2	2	0	-4	-100%
	Food Journalism	FDJO	1	1	0	0	0	-1	-100%
	Nutrition/Wellness	NWEL	6	4	1	0	0	-6	-100%
	Department Total		26	20	11	5	0	-26	-100%
Legal Studies	Legal Studies	LGS	5	6	4	10	4	-1	-20%
	Department Total		5	6	4	10	4	-1	-20%

Unduplicated Enrollment by Minor | Table 3.3

Fall 2014 - 2018

College/ Department	Minor Description	Minor Code	2014	2015	2016	2017	2018	5 Yr # Ch	5 Yr % Ch
College of Nursing & Health Sciences			12	24	33	16	11	-1	-8%
Health & Kinesiology ²	Kinesiology - Exercise Science	HKX	0	0	2	2	1	1	-
	Nutrition and Health	NHLT	0	2	1	1	2	2	-
	Public Health Education	PHE	12	22	30	13	8	-4	-33%
Department Total			12	24	33	16	11	-1	-8%
Total Minors			181	194	192	178	129	-52	-29%

Source: Fall enrollment archived on the official census date.

¹The minor description has been updated. Prior to fall 2016, the description did not include the 'IS-' prefix.

²Prior to fall 2017, the Departments of Education, Psychology & Family Studies, and Health & Kinesiology were housed in the College of Education & Human Sciences. That college has been dissolved.

Unduplicated Enrollment by Second Major | Table 3.4

Fall 2014 - 2018

College/ Department	Second Major/Concentration	Degree	2014	2015	2016	2017	2018	5 Yr # Ch	5 Yr % Ch
College of Arts, Sciences, & Education			13	19	21	20	18	5	38%
Art & Design	Fine Art ¹	BA	1	0	0	0	0	-1	-100%
	Fine Arts - Studio - Graphic	BFA	0	0	0	1	0	0	-
	Department Total		1	0	0	1	0	-1	-100%
Communication	Communication	BA, BS	2	1	1	0	1	-1	-50%
	Department Total		2	1	1	0	1	-1	-50%
Education ²	Elementary Education	BS	0	2	2	0	1	1	-
	Department Total		0	2	2	0	1	1	-
History, Political Science, & Geography	History	BA	1	1	1	3	3	2	200%
	History - Teacher Certification	BA	0	0	0	0	1	1	-
	Interdisciplinary Studies	BA, BS	1	0	0	0	0	-1	-100%
	Political Science	BA	0	1	1	2	3	3	-
	Department Total		2	2	2	5	7	5	250%
Languages, Literature, & Philosophy	English	BA	1	1	0	0	2	1	100%
	English - Creative Writing	BA	1	1	2	2	1	0	0%
	Spanish	BA	2	2	3	2	0	-2	-100%
	Women's Studies	BA	1	1	0	0	0	-1	-100%
	Department Total		5	5	5	4	3	-2	-40%
Music	Music	BA	0	1	2	1	0	0	-
	Music - Music Education	BM	1	1	1	0	0	-1	-100%
	Department Total		1	2	3	1	0	-1	-100%
Psychology & Family Studies ²	Family Studies	BS	0	1	3	1	2	2	-
	Psychology	BA	1	2	1	0	0	-1	-100%
	Department Total		1	3	4	1	2	1	100%
Sciences & Mathematics	Biology	BA, BS	0	1	1	0	0	0	-
	Chemistry	BS	0	0	1	4	2	2	-
	Mathematics	BA, BS	1	3	1	3	1	0	0%
	Department Total		1	4	3	7	3	2	200%

Unduplicated Enrollment by Second Major | Table 3.4

Fall 2014 - 2018

College/ Department	Second Major/Concentration	Degree	2014	2015	2016	2017	2018	5 Yr # Ch	5 Yr % Ch
Theatre	Theatre	BA	0	0	1	1	1	1	-
	Department Total		0	0	1	1	1	1	-
College of Business & Professional Studies			3	12	8	5	3	0	0%
Business	Accounting ¹	BS	2	4	1	0	1	-1	-50%
	Business Admin - Entrepreneurship ¹	BS	1	0	0	0	0	-1	-100%
	Business Admin - General Bus	BBA, BS ¹	0	2	3	1	0	0	-
	Bus Admin - Health Care Mgt	BBA, BS ¹	0	0	1	2	1	1	-
	Business Admin - Marketing	BBA, BS ¹	0	0	1	1	1	1	-
	Business Admin - MIS	BBA, BS ¹	0	2	2	1	0	0	-
	Department Total		3	8	8	5	3	0	0%
Culinary Arts	Culinary Arts	BS	0	1	0	0	0	0	-
	Department Total		0	1	0	0	0	0	-
Legal Studies	Legal Studies	BA, BS	0	3	0	0	0	0	-
	Department Total		0	3	0	0	0	0	-
College of Nursing & Health Sciences			0	1	3	2	1	1	-
Baccalaureate Nursing	Pre-Nursing BSN	BSN	0	1	0	0	0	0	-
	Department Total		0	1	0	0	0	0	-
Health & Kinesiology ²	Kinesiology - Exercise Science	BS	0	0	0	0	0	0	-
	Kinesiology - Exer Sci - Phys Ther	BS	0	0	1	0	0	0	-
	Public Health Education	BS	0	0	2	2	1	1	-
	Department Total		0	0	3	2	1	1	-
Total Enrollment			16	32	32	27	22	6	38%

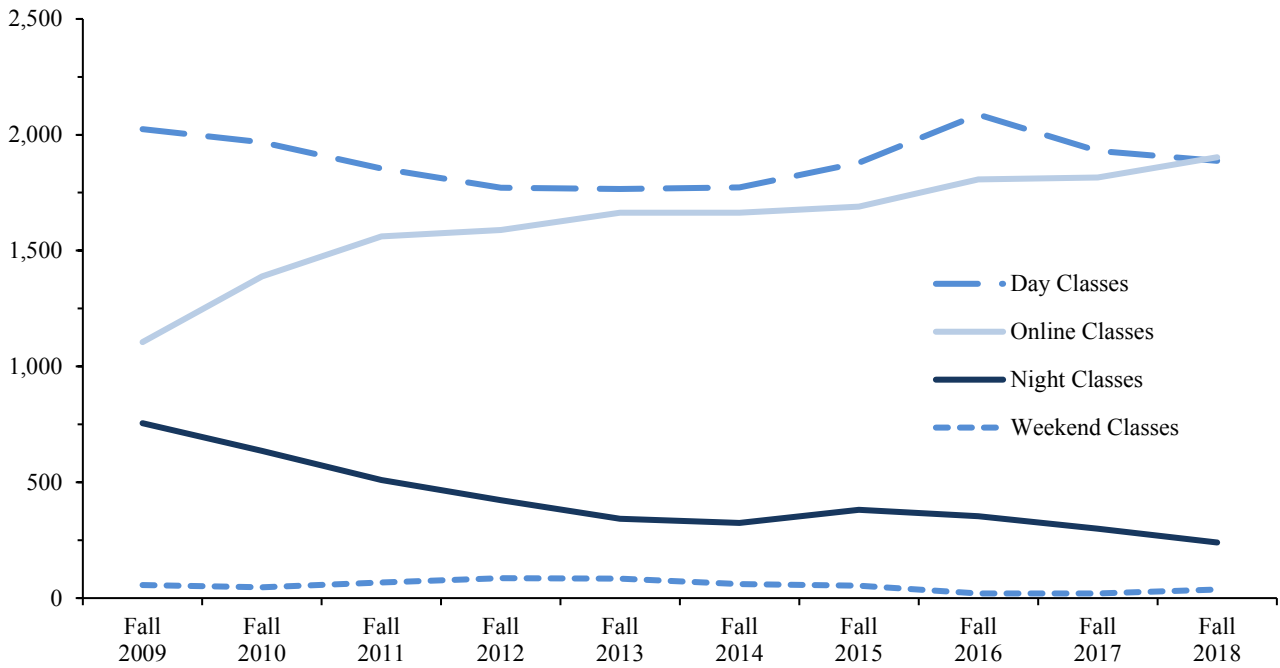
Source: Fall enrollment archived on the official census date.

¹These Degrees, Programs, or Concentrations are being phased out.

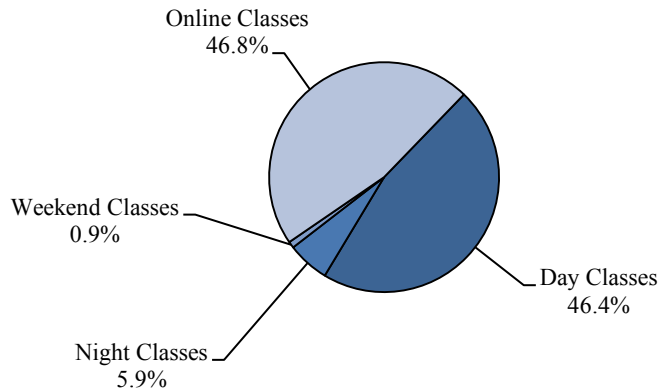
²For detailed changes, see Appendix A: Endnotes

Class Type Enrollment | Table 3.5
Fall 2009 - Fall 2018

	Fall 2009	Fall 2010	Fall 2011	Fall 2012	Fall 2013	Fall 2014	Fall 2015	Fall 2016	Fall 2017	Fall 2018
Day Classes	2,025	1,967	1,855	1,771	1,766	1,773	1,879	2,087	1,931	1,888
Night Classes	755	635	510	422	343	325	381	354	300	240
Weekend Classes	57	46	67	86	84	60	54	20	20	37
Online Classes	1,105	1,389	1,562	1,589	1,664	1,664	1,690	1,808	1,815	1,903



Class Type Enrollment Percentages
Fall 2018



Source: Internal Grade Files were used before Fall 2013. IHL Grade Files are used Fall 2013 forward. Students may be enrolled in more than one class type, but headcount is unduplicated within class type.

Credit Hour Generation by College & Department | Table 3.6
AY 2016, 2017, 2018, Summer 2018, and Fall 2018

College/ Department	Academic Year 2016				Academic Year 2017				Academic Year 2018				2016 - 2018		SU 18	FA 18	
	SU 15	FA 15	SP 16	AY Total	SU 16	FA 16	SP 17	AY Total	SU 17	FA 17	SP 18	AY Total	3 AY # Ch	3 AY % Ch			
College of Arts, Sciences, & Education																	
Art & Design	72	742	944	1,758	87	957	982	2,026	142	991	898	2,031	273	15.5%	102	716	
Communication	198	896	833	1,927	66	981	863	1,910	120	984	765	1,869	-58	-3.0%	75	841	
Education	267	1,275	1,216	2,758	286	1,252	1,185	2,723	234	1,071	1,260	2,565	-193	-7.0%	135	1,356	
History, Political Science, & Geography	99	1,092	963	2,154	54	1,308	1,263	2,625	87	1,082	956	2,125	-29	-1.3%	78	1,062	
Languages, Literature, & Philosophy	816	3,460	3,246	7,522	859	4,196	3,653	8,708	850	3,743	3,440	8,033	511	6.8%	817	3,797	
Music	83	512	509	1,104	93	608	497	1,198	86	521	589	1,196	92	8.3%	75	541	
Psychology & Family Studies	242	1,447	1,465	3,154	242	1,698	1,459	3,399	90	1,551	1,229	2,870	-284	-9.0%	129	1,332	
Science & Mathematics	332	4,229	3,422	7,983	312	4,312	3,283	7,907	246	3,894	3,234	7,374	-609	-7.6%	257	3,830	
Theatre	87	548	475	1,110	87	613	608	1,308	138	553	364	1,055	-55	-5.0%	48	412	
Total	2,196	14,201	13,073	29,470	2,086	15,925	13,793	31,804	1,993	14,390	12,735	29,118	-352	-1.2%	1,716	13,887	
College of Business & Professional Studies																	
Business	373	3,542	3,326	7,241	490	3,903	3,639	8,032	465	4,385	4,192	9,042	1,801	24.9%	607	4,479	
Culinary Arts	108	1,174	1,071	2,353	141	1,106	894	2,141	141	1,124	938	2,203	-150	-6.4%	108	971	
Legal Studies	120	459	630	1,209	84	495	693	1,272	81	681	801	1,563	354	29.3%	171	654	
Total	601	5,175	5,027	10,803	715	5,504	5,226	11,445	687	6,190	5,931	12,808	2,005	18.6%	886	6,104	

Credit Hour Generation by College & Department | Table 3.6
AY 2016, 2017, 2018, Summer 2018, and Fall 2018

College/ Department	Academic Year 2016				Academic Year 2017				Academic Year 2018				2016 - 2018		SU 18	FA 18	
	SU 15	FA 15	SP 16	AY Total	SU 16	FA 16	SP 17	AY Total	SU 17	FA 17	SP 18	AY Total	3 AY # Ch	3 AY % Ch			
College of Nursing & Health Sciences																	
Associate of Science in Nursing	128	1,022	807	1,957	184	1,147	807	2,138	160	1,318	1,045	2,523	566	28.9%	128	1,332	
Bachelor of Science in Nursing	6,537	6,843	7,304	20,684	5,534	7,357	7,697	20,588	5,706	6,853	7,093	19,652	-1,032	-5.0%	5,112	6,838	
Graduate Nursing	270	538	621	1,429	235	532	566	1,333	226	570	604	1,400	-29	-2.0%	481	478	
Health & Kinesiology	704	2,295	2,295	5,294	830	2,671	2,650	6,151	651	2,761	2,918	6,330	1,036	19.6%	519	2,975	
Nursing	336	308	269	913	364	317	256	937	333	314	285	932	19	2.1%	123	398	
Speech-Language Pathology	103	943	794	1,840	121	944	835	1,900	121	1,036	856	2,013	173	9.4%	112	1,079	
Total	8,078	11,949	12,090	32,117	7,268	12,968	12,811	33,047	7,197	12,852	12,801	32,850	733	2.3%	6,475	13,100	
University Classes and Honors																	
University Classes	45	464	347	856	42	550	357	949	33	431	256	720	-136	-15.9%	39	348	
Honors	369	107	124	600	235	142	128	505	269	147	133	549	-51	-8.5%	292	99	
Total	414	571	471	1,456	277	692	485	1,454	302	578	389	1,269	-187	-12.8%	331	447	
University Totals																	
Totals	11,289	31,896	30,661	73,846	10,346	35,089	32,315	77,750	10,179	34,010	31,856	76,045	2,199	3.0%	9,408	33,538	

Source: IHL Course Files (ROTC Classes are excluded)

- Prior to fall 2017, the Department of Education, the Department of Psychology & Family Studies, and the Department of Health & Kinesiology were housed in the College of Education & Human Sciences. That college has been dissolved.
- All prior terms have been updated to reflect to the fall 2017 college/department structure. Prior to fall 2017, the College of Arts, Sciences, and Education was coded as the College of Arts & Sciences and the College of Nursing & Health Sciences was coded as the College of Nursing & Speech-Language Pathology.
- General Studies courses prior to fall 2017 are coded within the department of Health & Kinesiology. Fall 2017 forward, those courses will be coded in the Department of Business.

Online Credit Hour Generation by College & Department | Table 3.7
AY 2016, 2017, 2018, Summer 2018, and Fall 2018

College/ Department	Academic Year 2016				Academic Year 2017				Academic Year 2018				2016 - 2018		SU 18	FA 18	
	SU 15	FA 15	SP 16	AY Total	SU 16	FA 16	SP 17	AY Total	SU 17	FA 17	SP 18	AY Total	3 AY # Ch	3 AY % Ch			
College of Arts, Sciences, & Education																	
Art & Design	39	0	72	111	48	0	69	117	63	0	156	219	108	97.3%	51	72	
Communication	198	341	320	859	66	240	257	563	120	257	252	629	-230	-26.8%	75	226	
Education	120	291	456	867	144	370	738	1,252	153	627	867	1,647	780	90.0%	129	978	
History, Political Science, & Geography	78	345	294	717	51	387	318	756	87	359	252	698	-19	-2.6%	75	381	
Languages, Literature, & Philosophy	768	785	966	2,519	788	937	968	2,693	808	916	1,112	2,836	317	12.6%	783	1,170	
Music	75	0	0	75	84	0	0	84	78	0	0	78	3	4.0%	69	0	
Psychology & Family Studies	185	627	813	1,625	242	823	685	1,750	72	707	347	1,126	-499	-30.7%	129	520	
Science & Mathematics	206	410	376	992	291	307	442	1,040	246	440	505	1,191	199	20.1%	254	503	
Theatre	15	153	132	300	0	111	144	255	0	147	102	249	-51	-17.0%	0	120	
Total	1,684	2,952	3,429	8,065	1,714	3,175	3,621	8,510	1,627	3,453	3,593	8,673	608	7.5%	1,565	3,970	
College of Business & Professional Studies																	
Business	327	2,365	2,546	5,238	440	2,748	2,852	6,040	417	3,221	3,232	6,870	1,632	31.2%	564	3,231	
Culinary Arts	54	192	153	399	75	354	111	540	45	267	207	519	120	30.1%	54	242	
Legal Studies	120	264	447	831	84	351	414	849	81	360	486	927	96	11.6%	171	429	
Total	501	2,821	3,146	6,468	599	3,453	3,377	7,429	543	3,848	3,925	8,316	1,848	28.6%	789	3,902	

Online Credit Hour Generation by College & Department | Table 3.7
AY 2016, 2017, 2018, Summer 2018, and Fall 2018

College/ Department	Academic Year 2016				Academic Year 2017				Academic Year 2018				2016 - 2018		SU 18	FA 18	
	SU 15	FA 15	SP 16	AY Total	SU 16	FA 16	SP 17	AY Total	SU 17	FA 17	SP 18	AY Total	3 AY # Ch	3 AY % Ch			
College of Nursing & Health Sciences																	
Associate of Science in Nursing	0	0	0	0	0	78	0	78	0	120	0	120	120	-	0	108	
Bachelor of Science in Nursing	6,141	5,267	5,478	16,886	5,150	5,664	5,873	16,687	5,256	5,165	5,271	15,692	-1,194	-7.1%	4,662	5,054	
Graduate Nursing	12	27	0	39	0	18	0	18	0	0	0	0	-39	-100.0%	0	0	
Health & Kinesiology	677	1,642	1,772	4,091	824	2,057	2,179	5,060	615	2,226	2,292	5,133	1,042	25.5%	495	2,385	
Nursing	36	150	259	445	25	168	208	401	42	150	237	429	-16	-3.6%	0	276	
Speech-Language Pathology	0	78	0	78	39	42	39	120	39	0	0	39	-39	-50.0%	0	0	
Total	6,866	7,164	7,509	21,539	6,038	8,027	8,299	22,364	5,952	7,661	7,800	21,413	-126	-0.6%	5,157	7,823	
University Classes and Honors																	
University Classes	45	54	128	227	42	75	92	209	33	63	54	150	-77	-33.9%	39	54	
Honors	0	0	0	0	0	0	0	0	0	0	0	0	-	-	0	0	
Total	45	54	128	227	42	75	92	209	33	63	54	150	-77	-33.9%	39	54	
University Totals																	
Totals	9,096	12,991	14,212	36,299	8,393	14,730	15,389	38,512	8,155	15,025	15,372	38,552	2,253	6.2%	7,550	15,749	

Source: IHL Course Files (ROTC Classes are excluded)

- Prior to fall 2017, the Department of Education, the Department of Psychology & Family Studies, and the Department of Health & Kinesiology were housed in the College of Education & Human Sciences. That college has been dissolved.
- All prior terms have been updated to reflect to the fall 2017 college/department structure. Prior to fall 2017, the College of Arts, Sciences, and Education was coded as the College of Arts & Sciences and the College of Nursing & Health Sciences was coded as the College of Nursing & Speech-Language Pathology.
- General Studies courses prior to fall 2017 are coded within the department of Health & Kinesiology. Fall 2017 forward, those courses will be coded in the Department of Business.

Degrees Awarded by IHL Official Academic Program Inventory (API) | Table 3.8
Academic Year 2017-2018

Associate of Science	50	Bachelor of Science (Cont.)	
513801 Nursing	50	400101 Physical Sciences	0
Bachelor of Applied Science	33	512207 Public Health Education	46
520201 Business Administration	33	440401 Public Safety Administration ¹	0
512207 Public Health Education	0	450101 Social Sciences ¹	2
Bachelor of Arts	50	510203 Speech Pathology	24
260101 Biology	0	Bachelor of Science in Nursing	388
090101 Communications	5	513801 Nursing	388
230101 English	10	Master of Arts	3
240101 General Studies	0	050207 Women's Leadership	3
540101 History	6	Master of Arts in Teaching	0
309999 Interdisciplinary Studies	1	131205 Secondary Teacher Education	0
220302 Legal Studies	1	Master of Business Administration	4
270101 Mathematics	0	520201 Business Administration	4
500901 Music	2	Master of Education	15
451001 Political Science	3	130401 Educational Leadership	6
420101 Psychology	19	131004 Gifted Studies	3
440401 Public Safety Administration ¹	0	131315 Reading/Literacy	6
450101 Social Sciences ¹	0	Master of Fine Arts	13
160905 Spanish	0	231302 Creative Writing	2
500101 Theatre	3	500506 Physical Theatre	11
050207 Women's Studies	0	Master of Public Health	6
Bachelor of Fine Arts	15	512201 Public Health	6
131302 Art Education ¹	3	Master of Science	14
500101 Fine Arts	12	131307 Health Education ¹	1
Bachelor of Music	6	510203 Speech-Language Pathology	13
500901 Music	6	Master of Science in Nursing	31
Bachelor of Science	261	513899 Family Nurse Clinician	31
520301 Accounting	12	Doctor of Nursing Practice	5
260101 Biology	14	513818 Nursing Practice	5
520201 Business Administration	54	Total Degrees Awarded	894
400501 Chemistry	1	Certificate Programs	0
090101 Communications	10	513805 Post-Graduate Advanced- -Practice Registered Nurse	0
120599 Culinary Arts	21	Total Degrees/Certificates Awarded	894
120509 Culinary Science/Culinology	0		
131202 Elementary Education	18		
190704 Family Studies	1		
240101 General Studies	15		
309999 Interdisciplinary Studies	0		
310501 Kinesiology	28		
220302 Legal Studies	11		
270101 Mathematics	4		

Source: IHL Degree Files

¹The following programs are being phased out.

Degrees Awarded by CIP, Major/Concentration, Race/Ethnicity, and Gender | Table 3.9
Academic Year 2017-2018

CIP	Major Desc/ Degree	Total	American Indian or Alaskan Native		Asian		Black/ African American		Hispanic		Multiple Race		Native Hawaiian or Pacific Islander		Non-Resident Alien		White	
			F	M	F	M	F	M	F	M	F	M	F	M	F	M	F	M
College of Arts, Sciences, & Education Total		151	0	0	2	1	34	7	0	1	0	0	0	0	5	4	76	21
050207	Women's Leadership [MA]	3					2	0									1	0
090101	Communication [BA]	5													1	1	3	0
	Communication [BS]	10					3	0									3	4
130401	Educational Leadership [MED]	6															4	2
131004	Gifted Studies [MED]	3															3	0
131202	Elementary Education [BS]	18					4	0									13	1
131302	Art Education [BFA]	3					0	1									2	0
131315	Reading/Literacy [MED]	6					1	0									5	0
190704	Family Studies [BS]	1					1	0										
230101	English [BA]	3					2	0									1	0
	English - Creative Writing [BA]	3															3	0
	English-Teacher Certification [BA]	4															4	0
231302	Creative Writing [MFA]	2															2	0
260101	Biology [BS]	13			0	1	2	0							3	0	6	1
	Biology-Teacher Certification [BS]	1															0	1
270101	Mathematics [BS]	3													1	2		
	Mathematics - Teacher Cert [BS]	1					1	0										
309999	Interdisciplinary Studies [BA]	1															0	1
400501	Chemistry [BS]	1													0	1		
420101	Psychology [BA]	19					11	2									6	0
450101	Social Sciences [BS]	2					1	1										
451001	Political Science [BA]	3					2	0									1	0

Degrees Awarded by CIP, Major/Concentration, Race/Ethnicity, and Gender | Table 3.9
Academic Year 2017-2018

CIP	Major Desc/ Degree	Total	American Indian or Alaskan Native		Asian		Black/African American		Hispanic		Multiple Race		Native Hawaiian or Pacific Islander		Non-Resident Alien		White	
			F	M	F	M	F	M	F	M	F	M	F	M	F	M	F	M
500101	Fine Arts-Studio Art [BFA]	6					1	0									4	1
	Fine Arts-Studio-Graphic [BFA]	6					1	1									3	1
	Theatre [BA]	2					1	0									0	1
	Theatre-Theatre Education [BA]	1															0	1
500506	Physical Theatre [MFA]	11			2	0			0	1							3	5
500901	Music [BA]	2					0	1									0	1
	Music-Music Education [BM]	2					0	1									1	0
	Music-Music Therapy [BM]	4					1	0									3	0
540101	History [BA]	5															4	1
	History-Teacher Certification [BA]	1															1	0
College of Business & Professional Studies Total		151	0	0	1	0	46	7	1	0	1	0	0	0	4	0	72	19
120599	Culinary Arts [BS]	21					7	2									9	3
220302	Legal Studies [BA]	1					1	0										
	Legal Studies [BS]	11					3	0									7	1
240101	General Studies [BS]	15					7	1	1	0							5	1
520201	Bus Admin - Cul Art - Main [BAS]	4					1	0									2	1
	Bus Admin - Culin Art - Hinds [BAS]	1					1	0										
	Bus Admin - Legal Admin [BAS]	4					2	0									2	0
	Bus Admin-Health Care Mgt [BAS]	9					3	0									5	1
	Bus Admin-Health Care Mgt [BS]	8					5	0			1	0					2	0
	Business Admin - General Bus [BAS]	10					3	1									4	2

Degrees Awarded by CIP, Major/Concentration, Race/Ethnicity, and Gender | Table 3.9
Academic Year 2017-2018

CIP	Major Desc/ Degree	Total	American Indian or Alaskan Native		Asian		Black/African American		Hispanic		Multiple Race		Native Hawaiian or Pacific Islander		Non-Resident Alien		White	
			F	M	F	M	F	M	F	M	F	M	F	M	F	M	F	M
520201 (Cont.)	Business Admin - General Bus [BS]	23					5	1									15	2
	Business Admin - Human Res Mgt [BAS]	1															1	0
	Business Admin - Human Res Mgt [BS]	3					3	0										
	Business Admin - Management [BS]	11					2	2									6	1
	Business Admin - Marketing [BS]	4													2	0	2	0
	Business Admin - MIS [BAS]	4															2	2
	Business Admin - MIS [BS]	5					1	0									3	1
	Business Administration [MBA]	4															3	1
520301	Accounting [BS]	12			1	0	2	0							2	0	4	3
College of Nursing & Health Sciences Total		592	6	1	4	0	173	12	1	1	5	0	0	0	2	0	348	39
131307	Health Education [MS]	1					1	0										
310501	Kinesiology-Exer Sci-Phys Ther [BS]	8					1	0									5	2
	Kinesiology-Exercise Science [BS]	20	1	0			5	5									5	4
510203	Speech/Language Pathology [BS]	24					3	0									21	0
	Speech-Language Pathology [MS]	13					1	0									12	0
512201	Public Health [MPH]	6					3	0									2	1
512207	Public Health Education [BS]	46	1	0			29	1							1	0	11	3
513801	Associate of Science Nursing [ASN]	50	0	1	1	0	11	2									30	5
	Bachelor of Science Nursing [BSN]	55					8	0							1	0	43	3
	Nursing - BSN - Tupelo [BSN]	333	4	0	2	0	109	4	1	1	5	0					187	20

Degrees Awarded by CIP, Major/Concentration, Race/Ethnicity, and Gender | Table 3.9
Academic Year 2017-2018

CIP	Major Desc/ Degree	Total	American Indian or Alaskan Native		Asian		Black/African American		Hispanic		Multiple Race		Native Hawaiian or Pacific Islander		Non-Resident Alien		White	
			F	M	F	M	F	M	F	M	F	M	F	M	F	M	F	M
513818	Nursing Practice [DNP]	5															5	0
513899	Family Nurse Practitioner [MSN]	31			1	0	2	0									27	1

Grand Total		894	6	1	7	1	253	26	2	2	6	0	0	0	11	4	496	79
-------------	--	-----	---	---	---	---	-----	----	---	---	---	---	---	---	----	---	-----	----

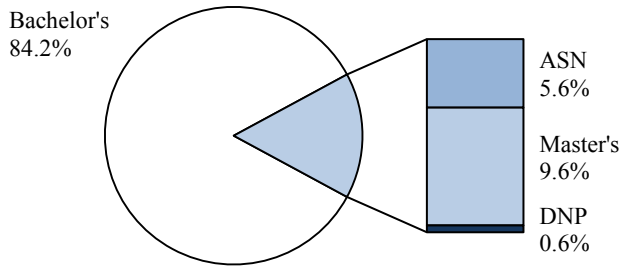
Source: IHL Degree Files and Internal Degree Files

The following programs are being phased out: Social Sciences [BA & BS] and Art Education [BFA].

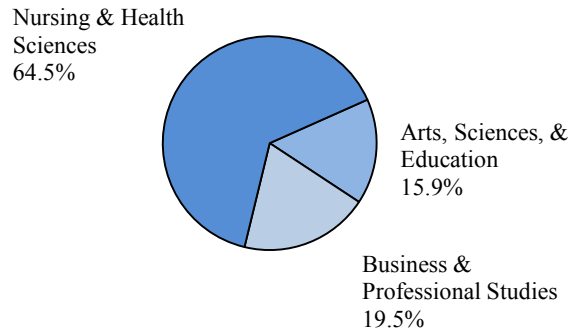
The Health Education [MS] program has been discontinued and restructured/renamed to Public Health [MPH].

Summary of Degrees Awarded | Table 3.10
Academic Year 2017-2018

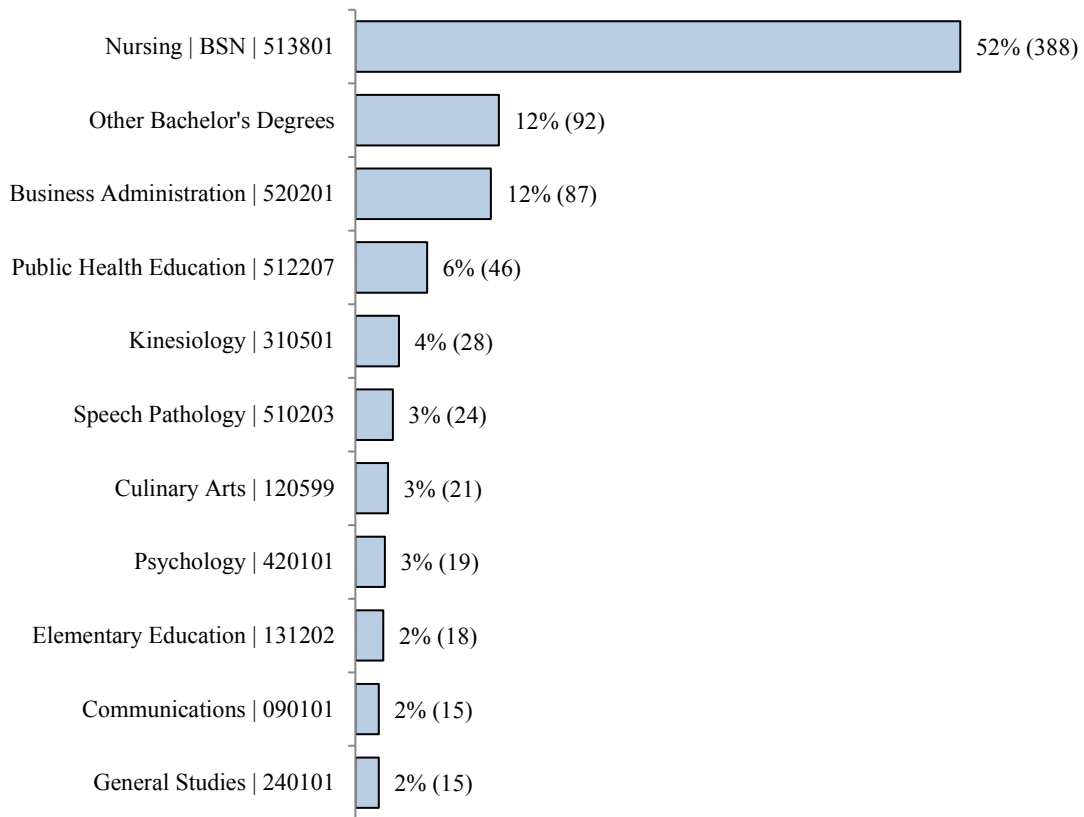
Degrees Awarded by Level



Bachelor's Degrees Awarded by College



Most Popular Bachelor's Degrees by CIP Code and IHL Program Title



Source: IHL Degree Files

Other Bachelor's Degrees include all Bachelor's programs with 14 or less degrees awarded.

Percentages may not equal 100% due to rounding.

History of Degrees Awarded by Program and CIP | Table 3.11
Academic Years 2014 - 2018

College / Program	CIP	2014	2015	2016	2017	2018	5 Yr # Ch	5 Yr % Ch
College of Arts, Sciences, & Education Total		146	156	144	141	151	5	3%
Art Education ¹	131302	1	0	0	0	3	2	200%
Biology	260101	16	15	14	16	14	-2	-13%
Chemistry	400501	0	5	3	1	1	1	100%
Communications	090101	8	14	12	14	15	7	88%
Creative Writing - Master's	231302	0	0	0	0	2	2	100%
Differentiated Instruction - Master's ¹	130301	0	0	1	0	0	0	0%
Educational Leadership - Master's	130401	5	9	0	8	6	1	20%
Elementary Education	131202	29	23	15	18	18	-11	-38%
English	230101	18	18	18	12	10	-8	-44%
Family Studies	190704	7	6	11	10	1	-6	-86%
Fine Arts ²	500101	17	20	9	11	12	-5	-29%
Gifted Studies - Master's	131004	1	2	4	4	3	2	200%
History	540101	4	3	4	1	6	2	50%
Interdisciplinary Studies	309999	2	0	1	5	1	-1	-50%
Mathematics	270101	1	2	3	1	4	3	300%
Music	500901	2	5	3	8	8	6	300%
Physical Sciences	400101	1	0	0	1	0	-1	-100%
Physical Theatre - Master's	500506	5	0	7	5	11	6	120%
Political Science	451001	3	1	5	0	3	0	0%
Psychology	420101	18	18	20	13	19	1	6%
Reading/Literacy - Master's	131315	2	8	7	6	6	4	200%
Secondary Teacher Education - Master's	131205	1	1	0	1	0	-1	-100%
Social Sciences ¹	450101	4	4	7	1	2	-2	-50%
Spanish	160905	1	1	0	1	0	-1	-100%
Theatre ²	500101	0	0	0	3	3	3	100%
Women's Leadership - Master's	050207	0	0	0	1	3	3	100%

History of Degrees Awarded by Program and CIP | Table 3.11
Academic Years 2014 - 2018

College / Program	CIP	2014	2015	2016	2017	2018	5 Yr # Ch	5 Yr % Ch
Women's Studies	050207	0	1	0	0	0	0	0%
College of Business & Professional Studies Total		129	130	117	144	151	22	17%
Accounting	520301	10	11	15	10	12	2	20%
Business Administration ³	520201	33	44	32	70	87	54	164%
Business Administration - Master's ⁴	520201	0	0	0	11	4	4	100%
Culinary Arts	120599	21	20	20	19	21	0	0%
General Studies	240101	40	26	25	21	15	-25	-63%
Global Commerce - Master's ⁴	520208	0	6	0	0	0	0	0%
Legal Studies	220302	17	10	10	9	12	-5	-29%
Professional Studies ³	520101	7	12	14	4	0	-7	-100%
Public Safety Administration ¹	440401	1	1	1	0	0	-1	-100%
College of Nursing & Health Sciences Total		462	574	603	597	592	130	28%
Doctor of Nursing Practice	513818	5	2	1	6	5	0	0%
Family Nurse Clinician - Master's	513899	31	38	37	33	31	0	0%
Health Education - Master's ⁵	131307	17	7	16	23	1	-16	-94%
Kinesiology	310501	17	26	14	20	28	11	65%
Nursing - ASN	513801	42	46	41	41	50	8	19%
Nursing - BSN	513801	283	380	435	399	388	105	37%
Public Health - Master's ⁵	512201	0	0	0	0	6	6	100%
Public Health Education	512207	33	39	24	45	46	13	39%
Speech Pathology	510203	22	26	24	18	24	2	9%
Speech-Language Pathology - Master's	510203	12	10	11	12	13	1	8%
Grand Total		737	860	864	882	894	157	21%

Source: IHL Degree Files

Academic Years prior to 2018 have been updated to reflect to the AY 2018 college/department/program structure.

¹These programs are being phased out.

²In AY 2017, Fine Arts (BA) was renamed to Theatre (BA). Fine Arts (BFA) was not renamed.

³In AY 2017, Professional Studies (BT) was restructured/renamed to Business Administration (BAS).

⁴In AY 2017, Global Commerce (MS) was restructured/renamed to Business Administration (MBA).

⁵In AY 2018, Health Education (MS) was restructured/renamed to Public Health (MPH).

History of Degrees Awarded by Program, CIP, and Gender | Table 3.12
Academic Years 2014 - 2018

College / Program	CIP	2014		2015		2016		2017		2018		Total
		F	M	F	M	F	M	F	M	F	M	
College of Arts, Sciences, & Education Total		118	28	127	29	112	32	117	24	117	34	738
Art Education ¹	131302	1	0							2	1	4
Biology	260101	14	2	11	4	7	7	14	2	11	3	75
Chemistry	400501			4	1	3	0	0	1	0	1	10
Communications	090101	6	2	12	2	5	7	9	5	10	5	63
Creative Writing - Master's	231302									2	0	2
Differentiated Instruction - Master's ¹	130301					1	0					1
Educational Leadership - Master's	130401	4	1	3	6			8	0	4	2	28
Elementary Education	131202	29	0	22	1	15	0	16	2	17	1	103
English	230101	12	6	16	2	13	5	10	2	10	0	76
Family Studies	190704	7	0	6	0	11	0	9	1	1	0	35
Fine Arts ²	500101	11	6	14	6	7	2	10	1	9	3	69
Gifted Studies - Master's	131004	1	0	2	0	4	0	3	1	3	0	14
History	540101	3	1	2	1	4	0	1	0	5	1	18
Interdisciplinary Studies	309999	2	0			1	0	5	0	0	1	9
Mathematics	270101	1	0	2	0	2	1	1	0	2	2	11
Music	500901	0	2	3	2	2	1	6	2	5	3	26
Physical Sciences	400101	0	1					0	1			2
Physical Theatre - Master's	500506	2	3			5	2	3	2	5	6	28
Political Science	451001	2	1	1	0	3	2			3	0	12
Psychology	420101	17	1	16	2	18	2	12	1	17	2	88
Reading/Literacy - Master's	131315	2	0	8	0	7	0	6	0	6	0	29
Secondary Teacher Education - Master's	131205	1	0	0	1			1	0			3
Social Sciences ¹	450101	2	2	3	1	4	3	0	1	1	1	18
Spanish	160905	1	0	1	0			1	0			3
Theatre ²	500101							1	2	1	2	6
Women's Leadership - Master's	050207							1	0	3	0	4

History of Degrees Awarded by Program, CIP, and Gender | Table 3.12
Academic Years 2014 - 2018

College / Program	CIP	2014		2015		2016		2017		2018		Total
		F	M	F	M	F	M	F	M	F	M	
Women's Studies	050207			1	0							1
College of Business & Professional Studies Total		105	24	91	39	88	29	114	30	125	26	671
Accounting	520301	7	3	9	2	11	4	8	2	9	3	58
Business Administration ³	520201	26	7	31	13	22	10	54	16	73	14	266
Business Administration - Master's ⁴	520201							6	5	3	1	15
Culinary Arts	120599	15	6	10	10	14	6	18	1	16	5	101
General Studies	240101	35	5	20	6	23	2	19	2	13	2	127
Global Commerce - Master's ⁴	520208			3	3							6
Legal Studies	220302	16	1	8	2	9	1	7	2	11	1	58
Professional Studies ³	520101	5	2	10	2	9	5	2	2			37
Public Safety Administration ¹	440401	1	0	0	1	0	1					3
College of Nursing & Health Sciences Total		422	40	512	62	537	66	532	65	539	53	2,828
Doctor of Nursing Practice	513818	5	0	2	0	1	0	5	1	5	0	19
Family Nurse Clinician - Master's	513899	26	5	31	7	31	6	28	5	30	1	170
Health Education - Master's ⁵	131307	15	2	7	0	13	3	17	6	1	0	64
Kinesiology	310501	15	2	19	7	10	4	12	8	17	11	105
Nursing - ASN	513801	37	5	42	4	36	5	37	4	42	8	220
Nursing - BSN	513801	260	23	337	43	392	43	361	38	360	28	1,885
Public Health - Master's ⁵	512201									5	1	6
Public Health Education	512207	30	3	38	1	19	5	43	2	42	4	187
Speech Pathology	510203	22	0	26	0	24	0	17	1	24	0	114
Speech-Language Pathology - Master's	510203	12	0	10	0	11	0	12	0	13	0	58
Grand Total		645	92	730	130	737	127	763	119	781	113	4,237

Source: IHL Degree Files

Academic Years prior to 2018 have been updated to reflect to the AY 2018 college/department/program structure.

¹These programs are being phased out.

²In AY 2017, Fine Arts (BA) was renamed to Theatre (BA). Fine Arts (BFA) was not renamed.

³In AY 2017, Professional Studies (BT) was restructured/renamed to Business Administration (BAS).

⁴In AY 2017, Global Commerce (MS) was restructured/renamed to Business Administration (MBA).

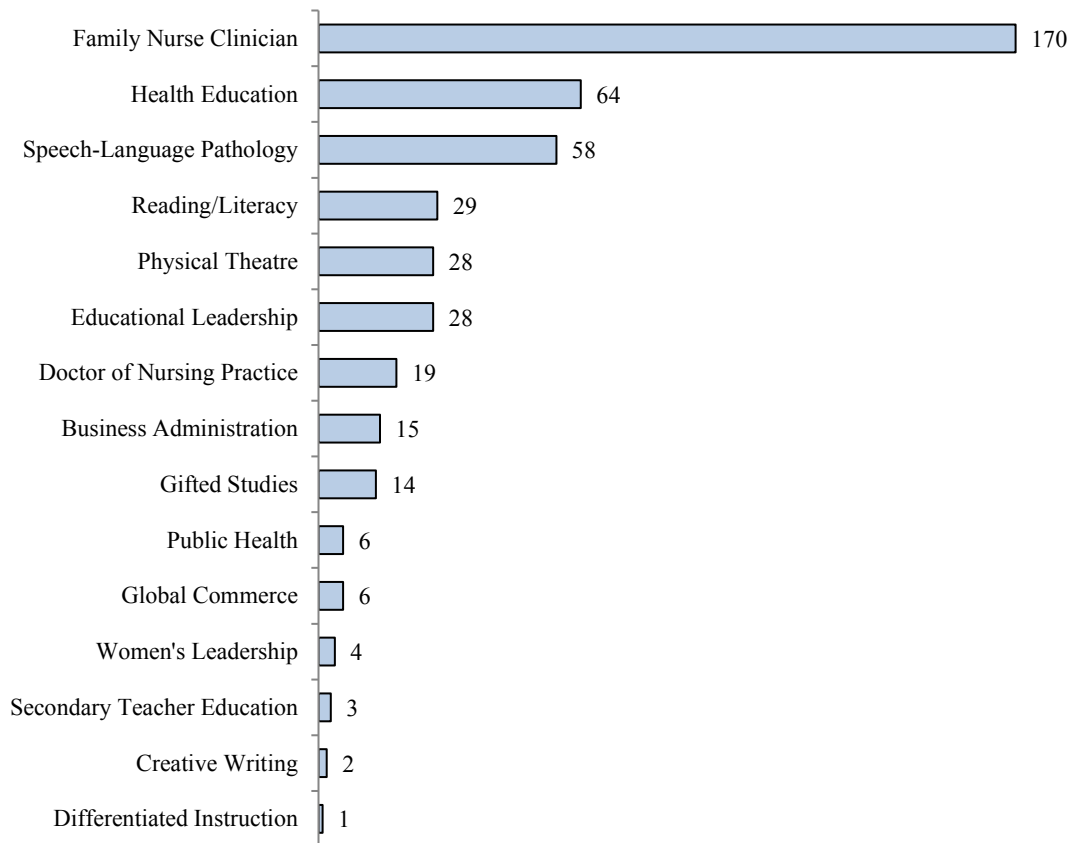
⁵In AY 2018, Health Education (MS) was restructured/renamed to Public Health (MPH).

Top Bachelor's & Graduate Degrees Awarded in the last 5 Years | Table 3.13
Academic Years 2014 - 2018

Top 10 Bachelor's Degrees Awarded in the Last 5 Years

1	Nursing - BSN	1885	53%	6	Kinesiology	105	3%
2	Business Administration	266	7%	7	Elementary Education	103	3%
3	Public Health Education	187	5%	8	Culinary Arts	101	3%
4	General Studies	127	4%	9	Psychology	88	2%
5	Speech Pathology	114	3%	10	English	76	2%

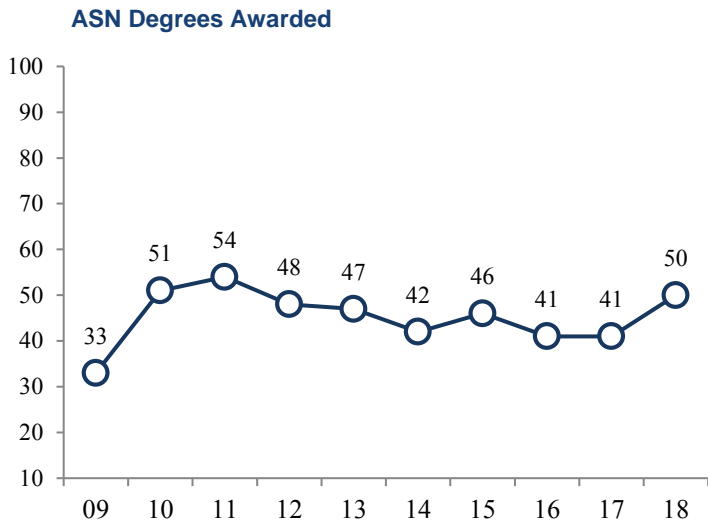
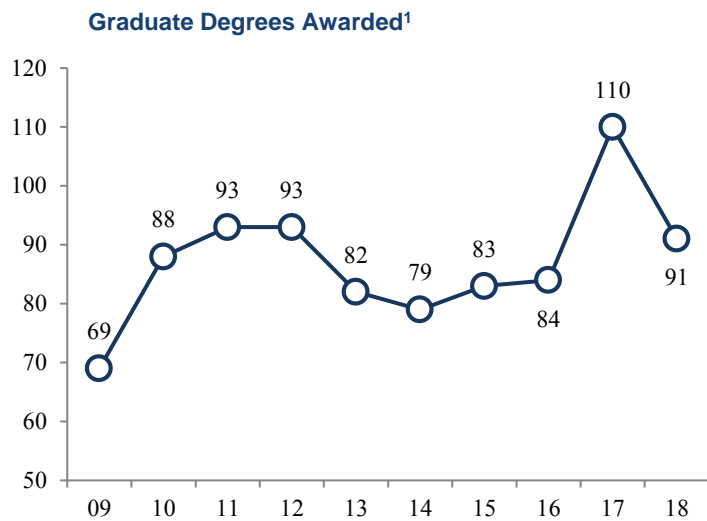
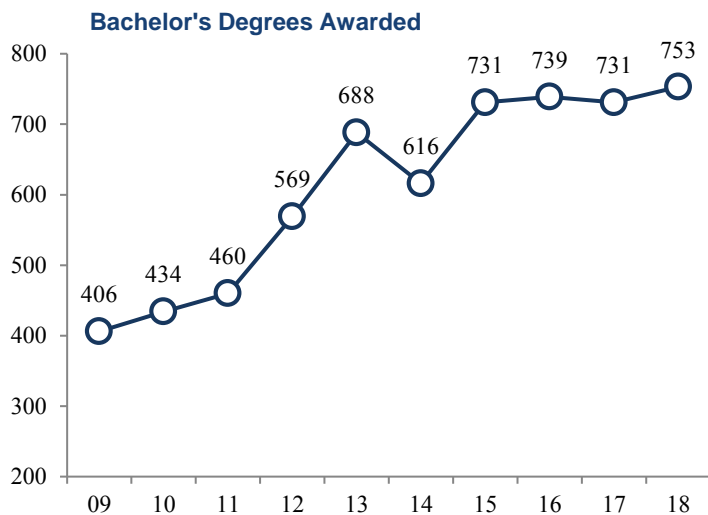
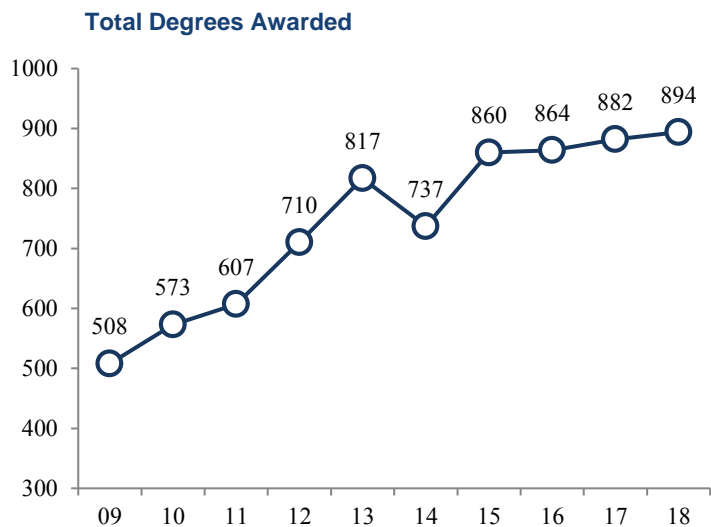
Graduate Degrees Awarded in the Last 5 Years



Source: IHL Degree Files

History of Degrees Awarded by Academic Level | Table 3.14
Academic Years 2009 - 2018

Degree	Degrees Awarded					Total	5 Yr # Ch	5 Yr % Ch
	2014	2015	2016	2017	2018			
ASN	42	46	41	41	50	220	8	19%
Bachelor's	616	731	739	731	753	3,570	137	22%
Master's	74	81	83	104	86	428	12	16%
DNP	5	2	1	6	5	19	0	0%
Total	737	860	864	882	894	4,237	157	21%



Source: IHL Degree Files
¹Includes DNP Degrees

Degrees Awarded by College, Department, CIP & Major/Concentration | Table 3.15
Academic Years 2014 - 2018

College/ Department	CIP	Major/Concentration	Degree	2014	2015	2016	2017	2018	Grand Total
College of Arts, Sciences, & Education Total				146	156	144	141	151	738
Art & Design	131302	Art Education ¹	BFA	1				3	4
	500101	Fine Arts - Studio Art ²	BFA	4	9	5	5	6	29
		Fine Arts - Studio - Graphic ²	BFA	8	5		6	6	25
	Department Total				13	14	5	11	15
Communication	090101	Communication	BA	4	4	3	1	5	17
			BS	4	10	9	13	10	46
	Department Total				8	14	12	14	15
Education ³	130301	Differentiated Instruction ¹	MED			1			1
	130401	Educational Leadership	MED	5	9		8	6	28
	131004	Gifted Studies	MED	1	2	4	4	3	14
	131202	Elementary Education	BS	29	23	15	18	18	103
	131205	Secondary Teacher Ed (Alt Rte) ⁴	MAT	1	1		1		3
	131315	Reading/Literacy	MED	2	8	7	6	6	29
	Department Total				38	43	27	37	33
History, Political Science, & Geography	309999	Interdisciplinary Studies	BA	1		1	4	1	7
			BS	1			1		2
	450101	Social Sciences ¹	BA		1	1			2
			BS	3	2	6	1	2	14
	451001	Social Sciences - Secondary Ed ¹	BA						0
			BS	1	1				2
	451001	Political Science	BA	3	1	5		3	12
			BA	3	1	4		5	13
	540101	History - Public History	BA		2				2
			BA	1			1	1	3
	Department Total				13	8	17	7	12
Languages, Literature, & Philosophy	050207	Women's Leadership	MA				1	3	4
	050207	Women's Studies	BA		1				1
	160905	Spanish	BA	1	1		1		3
		Spanish - Teacher Certification	BA						0
	230101	English	BA	7	9	5	3	3	27
		English - Creative Writing	BA	9	6	6	5	3	29
		English - Teacher Certification	BA	2	3	7	4	4	20
	231302	Creative Writing	MFA					2	2
Department Total				19	20	18	14	15	86

Degrees Awarded by College, Department, CIP & Major/Concentration | Table 3.15
Academic Years 2014 - 2018

College/ Department	CIP	Major/Concentration	Degree	2014	2015	2016	2017	2018	Grand Total	
Music	500901	Music	BA		2	1	3	2	8	
		Music - Music Education	BM	2			3	2	7	
		Music - Music Therapy	BM		3	2	2	4	11	
	Department Total			2	5	3	8	8	26	
Psychology & Family Studies ³	190704	Family Studies	BS	7	6	11	10	1	35	
	420101	Psychology	BA	18	18	20	13	19	88	
	Department Total			25	24	31	23	20	123	
Sciences & Mathematics	260101	Biology	BS	16	15	14	16	13	74	
		Biology - Teacher Certification	BS					1	1	
	270101	Mathematics	BS	1		2		3	6	
		Mathematics - Teacher Certification	BS		2	1	1	1	5	
	400101	Physical Science - Teacher Certification	BS	1			1		2	
	400501	Chemistry	BS		5	3	1	1	10	
	Department Total			18	22	20	19	19	98	
Theatre	500506	Physical Theatre	MFA	5		7	5	11	28	
	500101	Theatre	BA	5	6	4	3	2	20	
		Theatre - Theatre Education	BA					1	1	
	Department Total			10	6	11	8	14	49	
College of Business & Professional Studies Total				129	130	117	144	151	671	
Business	240101	General Studies ⁵	BA	1					1	
			BS	39	26	25	21	15	126	
	440401	Public Safety - Ad/FSM/Gen Bus ¹	BS	1		1			2	
			BS		1				1	
			Prof Studies - Culin Art - Gulf	BT			1		1	
			Prof Studies - Culin Art - Hinds	BT			1		1	
			Prof Studies - Culin Art - Main	BT			1		1	
	520101 ⁶	Prof Studies - Gen Bus	BT	1	2	2			5	
			BT	1	2	5			8	
			BT	1	3	1	1		6	
			BT	4	5	3	3		15	
			Business Admin - Culin Art - Gulf	BAS				1	1	
			Business Admin - Culin Art - Hinds	BAS				1	1	2
	520201	Business Admin - Culin Art - Main	BAS					4	4	
			BAS				6	10	16	
			BAS				1	9	10	

Degrees Awarded by College, Department, CIP & Major/Concentration | Table 3.15
Academic Years 2014 - 2018

College/ Department	CIP	Major/Concentration	Degree	2014	2015	2016	2017	2018	Grand Total
Business (Cont.)		Business Admin - Human Res Mgt	BAS				2	1	3
		Business Admin - Legal Admin	BAS				2	4	6
		Business Admin - MIS	BAS				7	4	11
		Business Admin - Entrepreneurship ¹	BS	1		1			2
	520201 (Cont.)	Business Admin - General Business	BS	13	20	15	19	23	90
		Business Admin - Health Care Mgt	BS				5	8	13
		Business Admin - Human Res Mgt	BS		1	2		3	6
		Business Admin - Management	BS	6	11	4	11	11	43
		Business Admin - Marketing	BS	12	8	4	5	4	33
		Business Admin - MIS	BS	1	4	6	10	5	26
	520201	Business Administration ⁷	MBA				11	4	15
	520208	Global Commerce ⁷	MS		6				6
	520301	Accounting	BS	10	11	15	10	12	58
Department Total				91	100	87	116	118	512
Culinary Arts	120599	Culinary Arts	BS	21	20	20	19	21	101
	Department Total				21	20	20	19	21
Legal Studies			BA	2	2	2		1	7
	220302	Legal Studies	BS	15	8	8	9	11	51
	Department Total				17	10	10	9	12
College of Nursing & Health Sciences Total				462	574	603	597	592	2828
Associate Nursing	513801	Associate of Science Nursing	ASN	42	46	41	41	50	220
	Department Total				42	46	41	41	50
Baccalaureate Nursing	513801	Bachelor of Science Nursing	BSN	58	37	56	63	55	269
		Nursing - BSN - Tupelo	BSN	225	343	379	336	333	1616
	Department Total				283	380	435	399	388
Graduate	513899	Family Nurse Practitioner	MSN	31	37	36	33	31	168
		Psychiatric Mental Health ¹	MSN		1	1			2
	513818	Doctor of Nursing Practice	DNP	5	2	1	6	5	19
	Department Total				36	40	38	39	36
Health & Kinesiology ³	131307	Health Education ⁸	MS	17	7	16	23	1	64
		Kinesiology - Exer Sci - Phys Ther ⁹	BS	4	14	9	8	8	43
	310501	Kinesiology - Exercise Science	BS	13	10	4	11	20	58
		Kinesiology - Teaching	BS		2	1	1		4

Degrees Awarded by College, Department, CIP & Major/Concentration | Table 3.15
Academic Years 2014 - 2018

College/ Department	CIP	Major/Concentration	Degree	2014	2015	2016	2017	2018	Grand Total
Health & Kinesiology ³ (Cont.)	512201	Public Health ⁸	MPH					6	6
	512207	Public Health Education	BS	33	39	24	45	46	187
	Department Total			67	72	54	88	81	362
Speech- Language Pathology	510203	Speech-Language Pathology	BS	22	26	24	18	24	114
	510203	Speech-Language Pathology	MS	12	10	11	12	13	58
	Department Total			34	36	35	30	37	172
Total Degrees Awarded				737	860	864	882	894	4237

Source: IHL Degree Files and Internal Degree Files

Academic Years prior to 2018 have been updated to reflect to the AY 2018 college/department/program structure. Prior to AY 2018, the College of Arts, Sciences, and Education was coded as the College of Arts & Sciences and the College of Nursing & Health Sciences was coded as the College of Nursing & Speech-Language Pathology.

¹These Programs/Concentrations are being phased out.

²Prior to AY 2017, 'Fine Arts - Studio Art' was coded as 'Studio Art' and 'Fine Arts - Studio - Graphic' was coded as 'Graphic Design'.

³Prior to AY 2018, the Departments of Education, Psychology & Family Studies, and Health & Kinesiology were housed in the College of Education & Human Sciences. That college has been dissolved.

⁴Prior to AY 2017, Secondary Teacher Ed (Alt Rte) was coded as Education (MAT).

⁵Prior to AY 2018, General Studies was housed in the Department of Health & Kinesiology. AY 2018 forward, the program will be housed in the Department of Business.

⁶The Professional Studies [BT] program has been discontinued and restructured/renamed to Business Administration [BAS].

⁷The Global Commerce [MS] program has been discontinued and restructured/renamed to Business Administration [MBA].

⁸The Health Education [MS] program has been discontinued and restructured/renamed to Public Health [MPH].

⁹Prior to AY 2018, 'Kinesiology - Exer Sci - Phys Ther' was coded as 'Exercise Sci-Physical Therapy'.

History of Degrees Awarded by Second Major | Table 3.16
Academic Years 2014 - 2018

College / Second Major	2014	2015	2016	2017	2018	Total
College of Arts, Sciences, & Education Total	1	3	6	3	0	13
Communication	0	0	1	0	0	1
Elementary Education	0	0	0	1	0	1
English	0	0	1	0	0	1
Fine Arts ¹	0	1	0	0	0	1
History	0	0	2	0	0	2
Mathematics	0	1	1	0	0	2
Music	0	0	0	1	0	1
Political Science	0	1	0	0	0	1
Psychology	0	0	0	1	0	1
Spanish	1	0	0	0	0	1
Women's Studies	0	0	1	0	0	1
College of Business & Professional Studies Total	0	3	2	0	1	6
Accounting	0	1	0	0	0	1
Business Admin - Entrepreneurship ¹	0	1	0	0	0	1
Business Admin - MIS	0	1	0	0	1	2
Culinary Arts	0	0	1	0	0	1
Legal Studies	0	0	1	0	0	1
Grand Total	1	6	8	3	1	19

Source: Internal Degree Files

¹These programs/concentrations are being phased out.

Starting AY 2017, second majors will be reported to IPEDS. They are currently not reported to IHL.

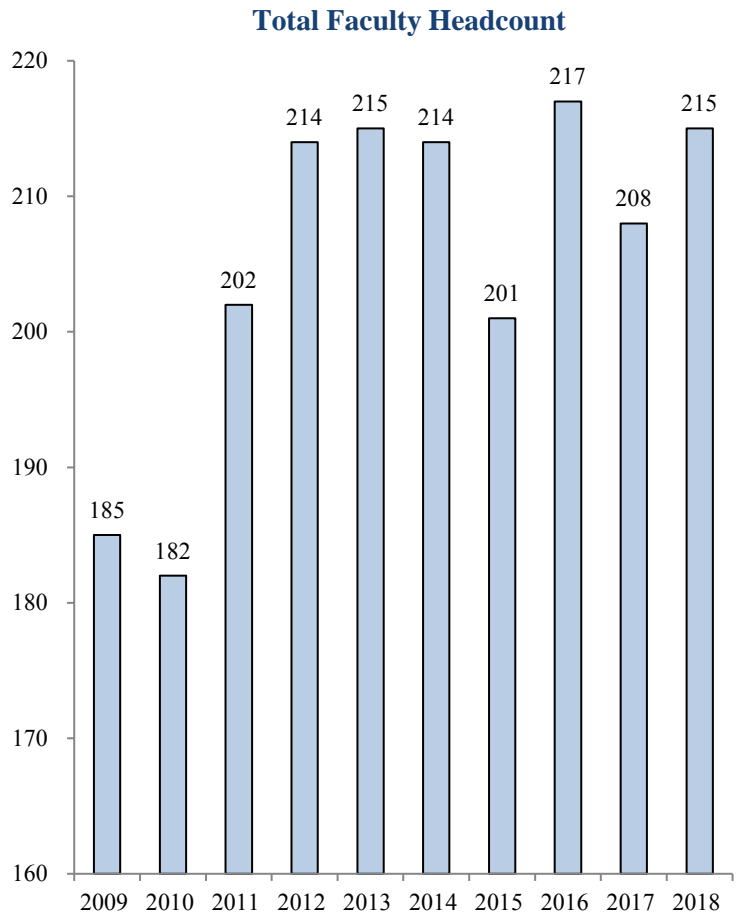
Faculty Profile | Table 4.1
Fall 2009 - 2018

Faculty			
Fall Sem.	Full-time	Part-time	Total
2009	134	51	185
2010	130	52	182
2011	136	66	202
2012	130	84	214
2013	135	80	215
2014	138	76	214
2015	137	64	201
2016	142	75	217
2017	140	68	208
2018	141	74	215

Full-time Faculty										
Fall Sem.	Rank				Degree				Contract	
	Prof.	Asso.	Asst.	Inst.	Term.	Spec.	Mstr.	Bach.	Acad	Fiscal
2009	26	21	36	51	75	0	56	3	111	23
2010	27	20	34	49	76	0	52	2	106	24
2011	30	23	30	53	82	1	51	2	109	27
2012	33	18	31	48	83	1	46	0	100	30
2013	34	18	42	41	89	1	44	1	105	30
2014	34	24	35	45	93	0	43	2	108	30
2015	35	23	38	41	95	0	40	2	108	29
2016	34	26	40	42	96	0	45	1	109	33
2017	35	27	38	40	95	1	43	1	107	33
2018	36	27	36	42	94	1	45	1	107	34

Full-time Faculty					
Fall Sem.	Gender		Race/Ethnicity		
	Male	Female	Black	White	Other
2009	51	83	5	120	9
2010	48	82	7	116	7
2011	50	86	7	123	6
2012	47	83	4	120	6
2013	49	86	7	121	7
2014	47	91	6	125	7
2015	45	92	6	123	8
2016	44	98	5	129	8
2017	41	99	6	125	9
2018	43	98	7	126	8

Part-time Faculty					
Fall Sem.	Gender		Race/Ethnicity		
	Male	Female	Black	White	Other
2014	20	56	10	65	1
2015	14	50	7	55	2
2016	15	60	8	65	2
2017	16	52	7	58	3
2018	18	56	6	66	2



Source: IHL Employee and Instructional Files

Faculty Credit Hour Production by Course Level | Table 4.2
Fall 2017 & 2018

Fall 2017 Student Credit Hours (SCH) by Faculty Terminal Degree Status

	Lower CH	Upper CH	Graduate CH	Total CH
Terminal Degrees	11,168	7,758	1,651	20,577
Non-Terminal Degrees	6,167	7,119	147	13,433
TOTAL	17,335	14,877	1,798	34,010

Fall 2018 Student Credit Hours (SCH) by Faculty Terminal Degree Status

	Lower CH	Upper CH	Graduate CH	Total CH
Terminal Degrees	9,809	9,159	1,523	20,491
Non-Terminal Degrees	6,812	6,034	201	13,047
TOTAL	16,621	15,193	1,724	33,538

Fall 2017 Student Credit Hours (SCH) by Faculty Full-time/Part-time Status

	Lower CH	Upper CH	Graduate CH	Total CH
Full-time Faculty	12,452	12,543	1,680	26,675
Part-time Faculty	4,883	2,334	118	7,335
TOTAL	17,335	14,877	1,798	34,010

Fall 2018 Student Credit Hours (SCH) by Faculty Full-time/Part-time Status

	Lower CH	Upper CH	Graduate CH	Total CH
Full-time Faculty	13,280	12,815	1,433	27,528
Part-time Faculty	3,341	2,378	291	6,010
TOTAL	16,621	15,193	1,724	33,538

Source: IHL Course files (ROTC Credit Hours are excluded), IHL Employee files & IHL Instructional files.

Full-time faculty: SCHs generated by full-time employees in EEO category 2, faculty.

Part-time faculty: SCHs generated by part-time employees in EEO category 2, faculty. SCHs generated by all other employees not in EEO category 2 (Administrators and staff) are included with part-time faculty.

Full-time Employees by EEOC

Term	10 - Administrator		20 - Faculty		30 - Professional		40 - Technical		50 - Clerical		60 - Skilled Crafts		70 - Service/Maintenance		Total
	Female	Male	Female	Male	Female	Male	Female	Male	Female	Male	Female	Male	Female	Male	
Fall 2015	22	11	92	45	52	13	4	12	44	1	0	0	4	12	312
Fall 2016	23	12	98	44	46	12	3	11	43	1	0	0	4	11	308
Fall 2017	22	12	99	41	45	14	2	13	43	1	0	0	3	9	304
Fall 2018	20	11	98	43	47	17	3	12	41	0	0	0	2	8	302

Term	Black			White			Other			Black			White			Other			Total			
	Black	White	Other	Black	White	Other	Black	White	Other	Black	White	Other	Black	White	Other	Black	White	Other				
Fall 2015	2	31	0	6	123	8	17	47	1	2	13	1	15	30	0	0	0	0	7	8	1	312
Fall 2016	2	33	0	5	129	8	13	41	4	2	12	0	14	30	0	0	0	0	7	7	1	308
Fall 2017	2	32	0	6	125	9	15	40	4	3	12	0	14	30	0	0	0	0	5	6	1	304
Fall 2018	2	28	1	7	126	8	16	45	3	3	12	0	11	30	0	0	0	0	3	6	1	302

Part-time Employees by EEOC

Term	10 - Administrator		20 - Faculty		30 - Professional		40 - Technical		50 - Clerical		60 - Skilled Crafts		70 - Service/Maintenance		Total
	Female	Male	Female	Male	Female	Male	Female	Male	Female	Male	Female	Male	Female	Male	
Fall 2015	0	0	50	14	11	4	1	0	6	2	0	0	1	3	92
Fall 2016	0	0	60	15	22	3	0	1	12	2	0	0	1	3	119
Fall 2017	0	0	52	16	14	3	0	1	8	1	1	0	6	3	105
Fall 2018	0	0	56	18	18	2	1	1	5	1	0	0	3	6	111

Term	Black			White			Other			Black			White			Other			Total			
	Black	White	Other	Black	White	Other	Black	White	Other	Black	White	Other	Black	White	Other	Black	White	Other				
Fall 2015	0	0	0	7	55	2	1	11	3	0	0	1	3	5	0	0	0	0	2	2	0	92
Fall 2016	0	0	0	8	65	2	5	18	2	0	1	0	4	9	1	0	0	0	2	2	0	119
Fall 2017	0	0	0	7	58	3	4	11	2	0	1	0	2	7	0	0	1	0	6	3	0	105
Fall 2018	0	0	0	6	66	2	3	15	2	0	2	0	1	5	0	0	0	0	4	5	0	111

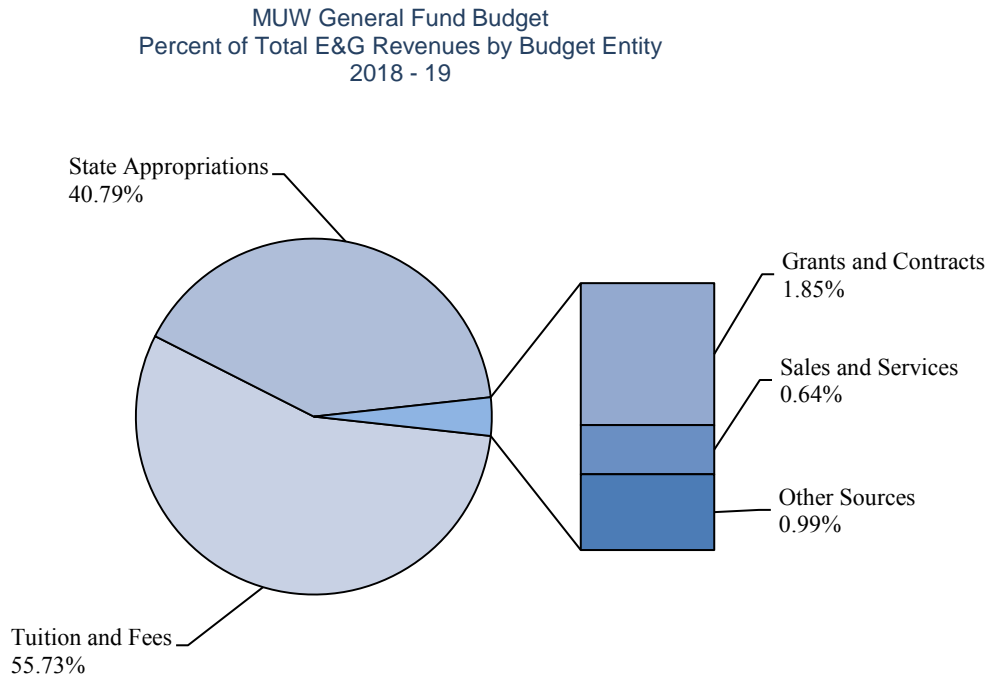
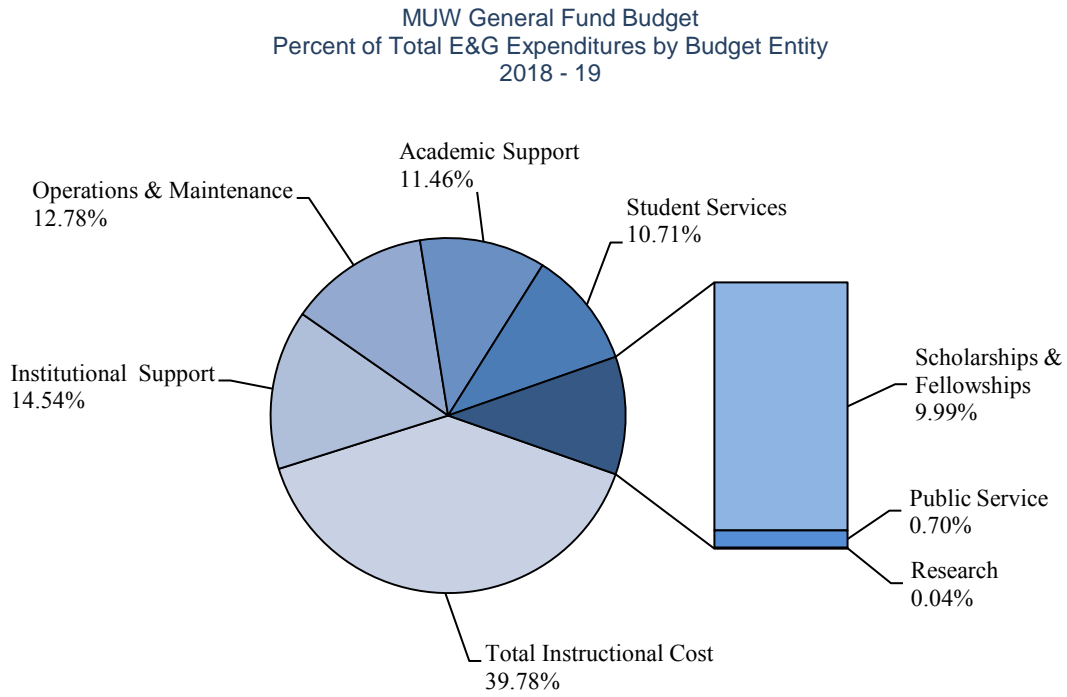
Source: IHL Employee Files

**Summary of Budgeted E&G Revenues and Expenditures | Table 5.1
FY 2018-19 & FY 2017-18**

	2018-19		2017-18			
CURRENT FUND REVENUES						
Tuition and Fees	\$	20,456,814	55.73%	\$	23,283,974	59.25%
State Govt. Appropriations						
General Support	\$	12,349,819	33.64%	\$	12,369,270	31.48%
Washington Scholarship	\$	-	0.00%	\$	9,375	0.02%
Interest Funds	\$	9,389	0.03%	\$	9,389	0.02%
MS Gov. School	\$	150,000	0.41%	\$	150,000	0.38%
Education Enhancement Fund	\$	2,465,459	6.72%	\$	2,260,369	5.75%
Capital Projects	\$	-	0.00%	\$	-	0.00%
Funding for Efficiencies	\$	-	0.00%	\$	62,514	0.16%
Geospatial Licenses	\$	-	0.00%	\$	9,406	0.02%
Sub-Total	\$	14,974,667	40.79%	\$	14,870,323	37.84%
Local Govt. Appropriations	\$	-	0.00%	\$	-	0.00%
Total Govt. Appropriations	\$	14,974,667	40.79%	\$	14,870,323	37.84%
Grants and Contracts						
Federal Grants and Contracts	\$	30,000	0.08%	\$	30,000	0.08%
State Grants and Contracts	\$	190,925	0.52%	\$	190,925	0.49%
Other Grants and Contracts	\$	457,565	1.25%	\$	389,974	0.99%
Sub-Total	\$	678,490	1.85%	\$	610,899	1.55%
Sales and Services	\$	235,000	0.64%	\$	265,000	0.67%
Other Sources	\$	362,406	0.99%	\$	268,000	0.68%
TOTAL CURRENT REVENUES	\$	36,707,377	100.00%	\$	39,298,196	100.00%
CURRENT FUND EXPENDITURES						
Total Instructional Cost	\$	14,601,190	39.78%	\$	14,831,746	37.74%
Research	\$	14,000	0.04%	\$	14,000	0.04%
Public Service	\$	255,627	0.70%	\$	275,910	0.70%
Academic Support	\$	4,207,664	11.46%	\$	4,274,563	10.88%
Student Services	\$	3,931,528	10.71%	\$	3,509,090	8.93%
Institutional Support	\$	5,338,493	14.54%	\$	5,216,892	13.28%
Operations & Maintenance	\$	4,690,116	12.78%	\$	4,640,667	11.81%
Scholarships & Fellowships	\$	3,668,759	9.99%	\$	6,535,329	16.63%
Mandatory Transfers	\$	-	0.00%	\$	-	0.00%
Non-Mandatory Transfers	\$	-	0.00%	\$	-	0.00%
TOTAL CURRENT EXPENDITURES	\$	36,707,377	100.00%	\$	39,298,196	100.00%

Source: MUW General Fund Budgets

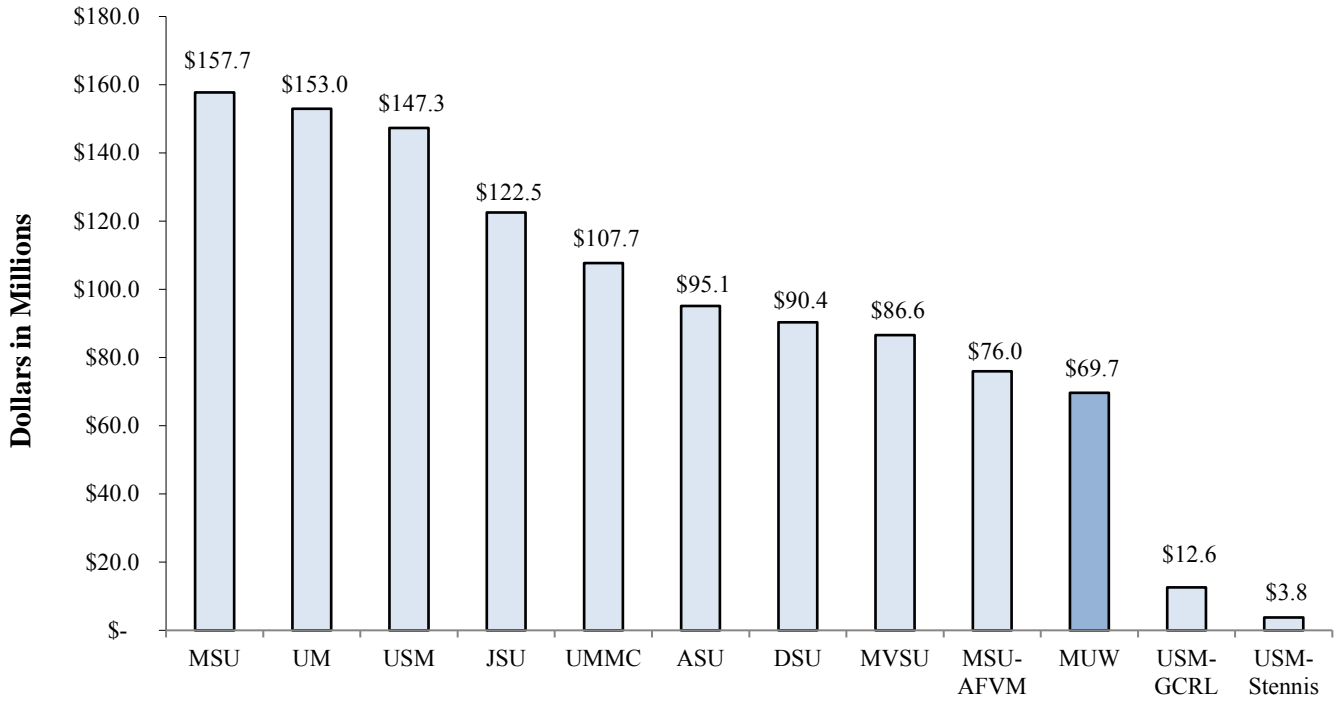
MUW General Fund Budget Percent of Total E&G Revenues and Expenditures by Budget Entity | Table 5.2
 FY 2018-19



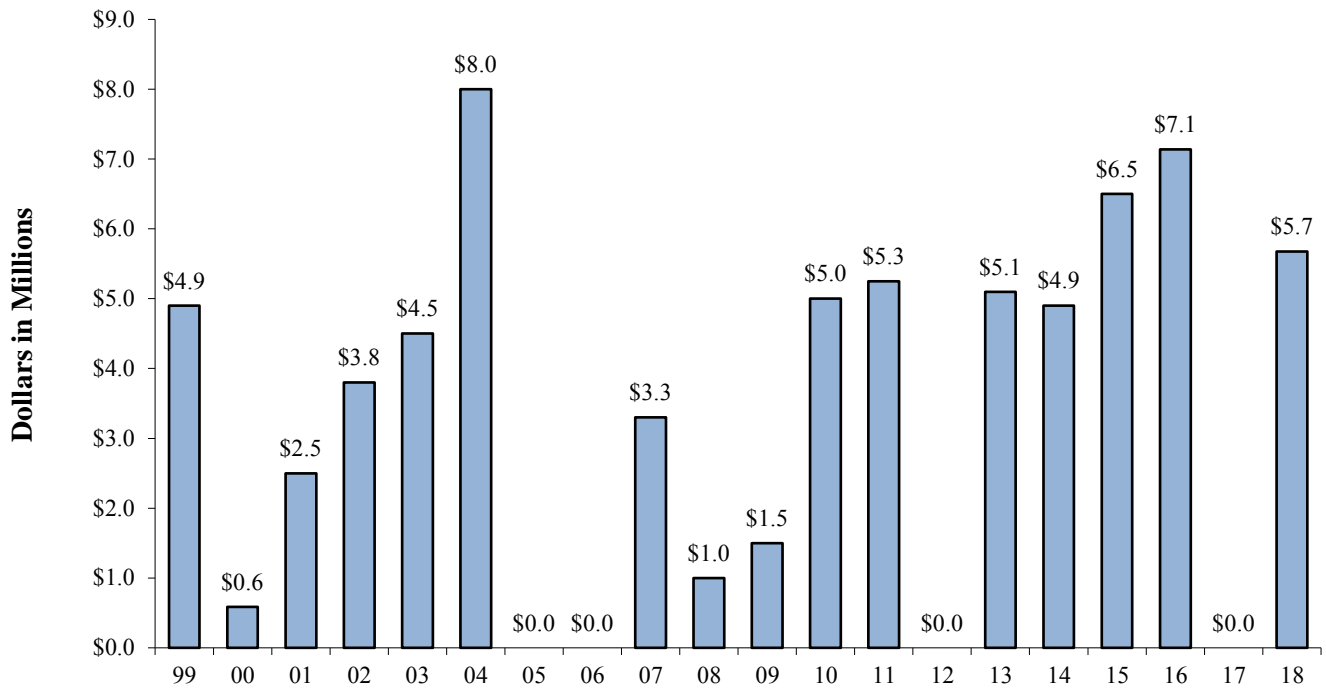
Source: MUW General Fund Budgets

Authorization of State General Obligation Bonds for IHL & MUW | Table 5.3

Authorization of State General Obligation Bonds for IHL - FY 1998-99 through FY 2017-18



Authorization of State General Obligation Bonds for MUW - FY 1998-99 through FY 2017-18



Source: State General Obligation Bonds

The \$35.6 million Ayers bonds divided between ASU, JSU, and MVSU are not included.

MS Emergency Mgt. Agency disaster recovery funds are not included.

**Mississippi University for Women
Accreditation Information (Updated 02.13.2018)**

Mississippi University for Women (MUW) is accredited by the Southern Association of Colleges and Schools Commission on Colleges to award degrees at the levels of associate, baccalaureate, masters, and doctorate. Contact the Commission on Colleges at 1866 Southern Lane, Decatur, Georgia 30033-4097 or call 404-679-4500 for questions about the accreditation at MUW. Initial accreditation was received in 1921. MUW's last reaffirmation was in 2014; its next reaffirmation is scheduled for 2024 (<http://www.sacscoc.org/details.asp?instid=49760>). Carla Lowery, Chief Information Officer, is the SACSCOC campus liaison.

Below is a table of accredited or approved MUW programs. Costs listed are estimates based on the best data available at the time of compilation.

Accredited Program	Campus Contact for Accreditation	Accrediting Body (Acronym)	Website of Accrediting Body	Last Visit	Next Visit	Required Institutional Action/Interim Reports	Accreditation Agency Action	Annual Fee: Membership	Size of Team/ Length of Visit
Associate of Science in Nursing	Dr. Sheila Adams and Dr. Maria Scott	1. Accrediting Commission for Education in Nursing (ACEN)	www.acenursing.org	Fall 2013	Fall 2021	Submit Annual Compliance Report in October of each year	Continuing accreditation for the max allowed of 8 years.	\$2,875	3 team members/ 3 days at \$2,745/member = \$8,235
		2. MS Institutions of Higher Learning, Board of Trustees (IHL BOT)	www.mississippi.edu/ihl	Fall 2013	Fall 2021	Submit Annual Compliance Report in October of each year	Next visit scheduled Fall 2021.	\$300 MS Council of Deans and Directors of Schools of Nursing for all nursing programs	3 team members/ 3 days = \$2,000

Accredited Program	Campus Contact for Accreditation	Accrediting Body (Acronym)	Website of Accrediting Body	Last Visit	Next Visit	Required Institutional Action/Interim Reports	Accreditation Agency Action	Annual Fee: Membership	Size of Team/ Length of Visit
Bachelor of Science in Nursing	Dr. Sheila Adams and Dr. Tammie McCoy	1. Commission on Collegiate Nursing Education (CCNE)	www.cneaccreditation.org	Spring 2010	Spring 2020	Submit Annual Compliance Report in <u>October</u> of each year	Continuing accreditation for the maximum allowed, 10 yrs.	\$3,772 total for the BSN, MSN, DNP and the Post-Graduate APRN Certificate Programs.	4 team members/3 days for the BSN, MSN, DNP and the Post-Graduate APRN Certificate Programs at \$1,750/team member = \$7,000
		2. Mississippi Institutions of Higher Learning, Board of Trustees (IHL BOT)	www.mississippi.edu/ihl	Spring 2010	Spring 2020	Submit Annual Compliance Report in <u>October</u> of each year	Next visit scheduled for spring 2020.	\$300 MS Council of Deans and Directors of Schools of Nursing for all nursing programs	3 team members/ 3 days for the BSN, MSN, DNP and Post-Graduate APRN Certificate Programs = \$2,000

Accredited Program	Campus Contact for Accreditation	Accrediting Body (Acronym)	Website of Accrediting Body	Last Visit	Next Visit	Required Institutional Action/Interim Reports	Accreditation Agency Action	Annual Fee: Membership	Size of Team/ Length of Visit
Masters of Science in Nursing	Dr. Sheila Adams and Dr. Teresa Hamill	1. Commission on Collegiate Nursing Education (CCNE)	www.cneaccreditation.org	Spring 2010	Spring 2020	Submit Annual Compliance Report in <u>October</u> of each year	Continuing accreditation for the maximum allowed, 10 yrs.	\$3,772 total for the BSN, MSN, DNP and the Post-Graduate APRN Certificate Programs.	4 team members/3 days for the BSN, MSN, DNP and the Post-Graduate APRN Certificate Programs at \$1,750/team member = \$7,000
		2. Mississippi Institutions of Higher Learning. Board of Trustees (IHL BOT)	www.mississippi.edu/ihl	Spring 2010	Spring 2020	Submit Annual Compliance Report in <u>October</u> of each year	Next visit scheduled for spring 2020.	\$300 MS Council of Deans and Directors of Schools of Nursing for all nursing programs	3 team members/ 3 days for the BSN, MSN, DNP and Post-Graduate APRN Certificate Programs = \$2,000
Master of Science in Speech- Language Pathology	Dr. Sheila Adams and Dr. Joy Townsend	Council on Academic Accreditation (CAA) of the American Speech-Language-Hearing Association (ASHA)	caa.asha.org	Spring 2011	Spring 2019	Submit Annual Compliance Report in <u>August</u> of each year	Continuing accreditation for the maximum allowed, 8 yrs.	\$1,910	3 team members/ 3 days

Accredited Program	Campus Contact for Accreditation	Accrediting Body (Acronym)	Website of Accrediting Body	Last Visit	Next Visit	Required Institutional Action/Interim Reports	Accreditation Agency Action	Annual Fee: Membership	Size of Team/ Length of Visit
Doctor of Nursing Practice and Post Graduate APRN Certificate Program	Dr. Sheila Adams and Dr. Teresa Hamill	1. Commission on Collegiate Nursing Education (CCNE)	www.cneaccreditation.org	Fall 2015	Fall 2020		Accreditation in 2015 for the maximum allowed, 5 yrs.	\$3,772 total for the BSN, MSN, DNP and the Post-Graduate APRN Certificate Programs.	4 team members/3 days for the BSN, MSN, DNP and the Post-Graduate APRN Certificate Programs at \$1,750/team member = \$7,000
		2. Mississippi Institutions of Higher Learning Board of Trustees (IHL Board)	www.mississippi.edu/ihl	Fall 2015	Fall 2020		Accreditation in 2015 for the maximum allowed, 5 yrs.	\$300 MS Council of Deans and Directors of Schools of Nursing for all nursing programs	3 team members/ 3 days for the BSN, MSN, DNP and Post-Graduate APRN Certificate Programs = \$2,000
Bachelor of Science in Accounting and Bachelor of Science in Business Administration	Dr. Marty Brock and Dr. Dee Larson	Accreditation Council for Business Schools and Programs (ACBSP)	www.acbsp.org	Spring 2010	Spring 2020	No interim report required. Periodic report to ACBSP due every two years. Last self-report submitted 09-30-08	Continuing accreditation for the max allowed, 10 yrs	\$2,600	3 team members/3 days

Accredited Program	Campus Contact for Accreditation	Accrediting Body (Acronym)	Website of Accrediting Body	Last Visit	Next Visit	Required Institutional Action/Interim Reports	Accreditation Agency Action	Annual Fee: Membership	Size of Team/ Length of Visit
Bachelor of Arts in Music and Bachelor of Music in Music	Dr. Julia Mortyakova	National Association of Schools of Music (NASM)	www.nasm.arts-accredit.org	2014	Spring 2024	Submit annual Higher Education Arts Data Services (HEADS) report.	Continuing accreditation for the max allowed, 10 yrs	\$1,407, invoiced on September 1st of each year	2 team members/2 days
Bachelor of Fine Arts	Shawn Dickey	National Association of Schools of Art and Design (NASAD)	www.nsad.arts-accredit.org	Spring 2012	Spring 2022	Submit annual Higher Education Arts Data Services (HEADS) report.	Continuing accreditation for the max allowed, 10 yrs	\$1741, invoiced annually on July 1st	2 team members, 1-2 day visit
Bachelor of Arts/Science in Legal Studies	Wesley Garrett, J.D.	American Bar Association (ABA)	www.americanbar.org/groups/paralegals.html	Spring 2016	Spring 2023	Interim report every 3.5 years. Reapproval report every 7 yrs.	Continuing approval for max allowed, 7 yrs	\$2,600, due on or before May 1st each year	2 team members/1 to 1.5 days
Bachelor of Science in Family Studies	Dr. Dorothy Berglund	National Council on Family Relations (NCFR)	www.ncfr.org	Spring 2019	Spring 2024	Typically no visit is required, but documentation must be submitted every 5 yrs.	Continuing approval for the max allowed, 5 yrs	\$75, due on or before April 1st each year except renewal year when fee is \$550.	None required; NCFR can send 1-2 team members/1-2 Days

Accredited Program	Campus Contact for Accreditation	Accrediting Body (Acronym)	Website of Accrediting Body	Last Visit	Next Visit	Required Institutional Action/Interim Reports	Accreditation Agency Action	Annual Fee: Membership	Size of Team/ Length of Visit
All teacher education programs	Dr. Brian Anderson	1. National Council for Accreditation in Teacher Education (NCATE), becoming the Council for Accreditation for Educator Preparation (CAEP)	www.ncate.org	Fall 2012	Fall 2019	Reports submitted annually to address areas for improvement	Continuing accreditation	\$3,500 (varies based on number of graduates)	NA
		2. Mississippi Department of Education (MDE)	www.mde.k12.ms.us	Spring 2017	Fall 2019	Report submitted annually.	Continuing accreditation	None	1 day
		3. Specialized Professional Associations (SPAs):				SPA reports submitted about one year prior to NCATE visit.	Continuing accreditation		NA

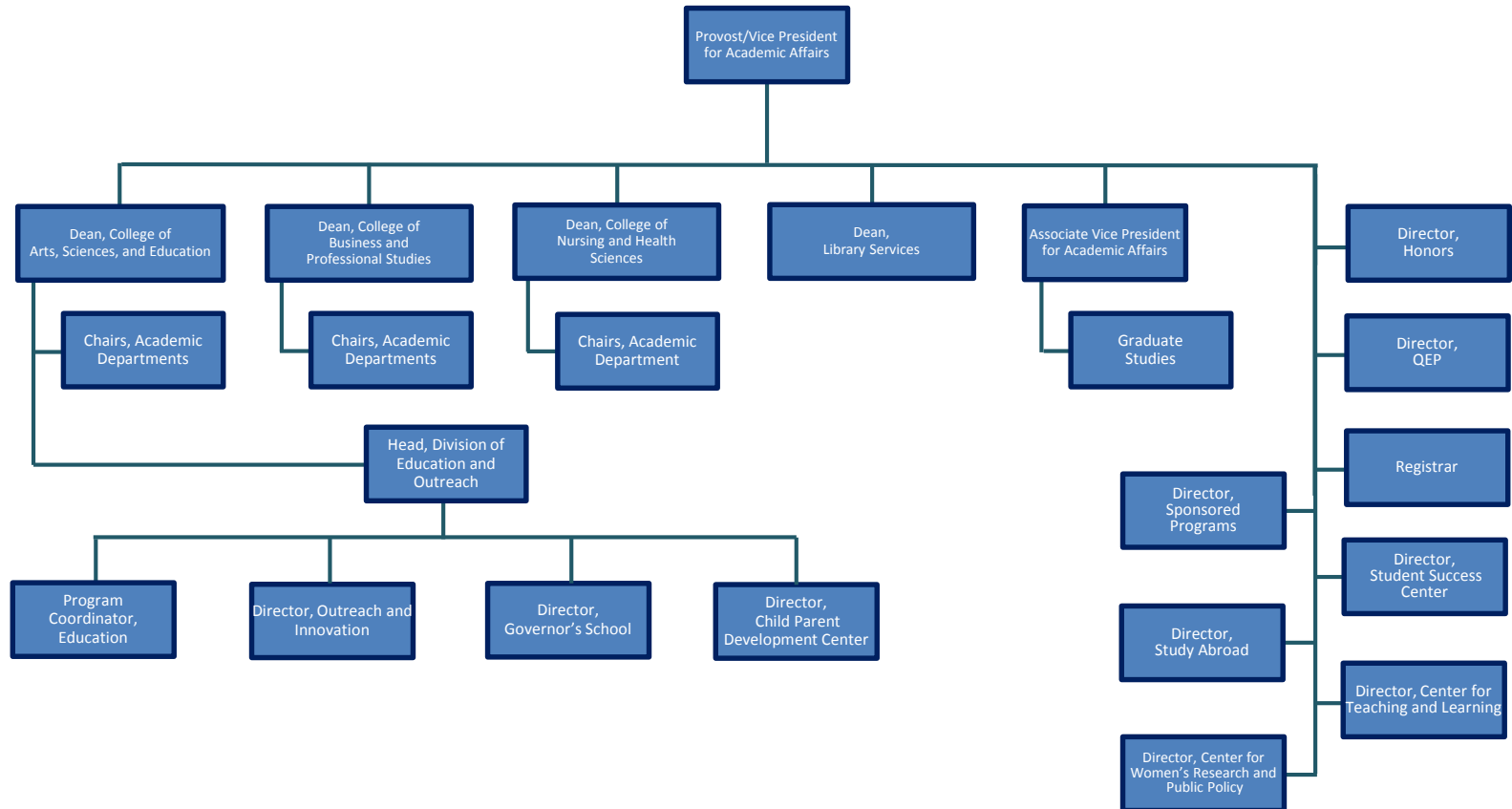
**Mississippi University for Women
Accreditation Information (Updated 02.13.2018)**

Below is a table of nationally recognized MUW programs. All of these programs submitted portfolios for national recognition by the indicated Specialized Professional Associations in compliance with the National Council for the Accreditation of Teacher Education (Council for Accreditation of Educator Preparation) accrediting process. The next site visit for NCATE is fall 2019.

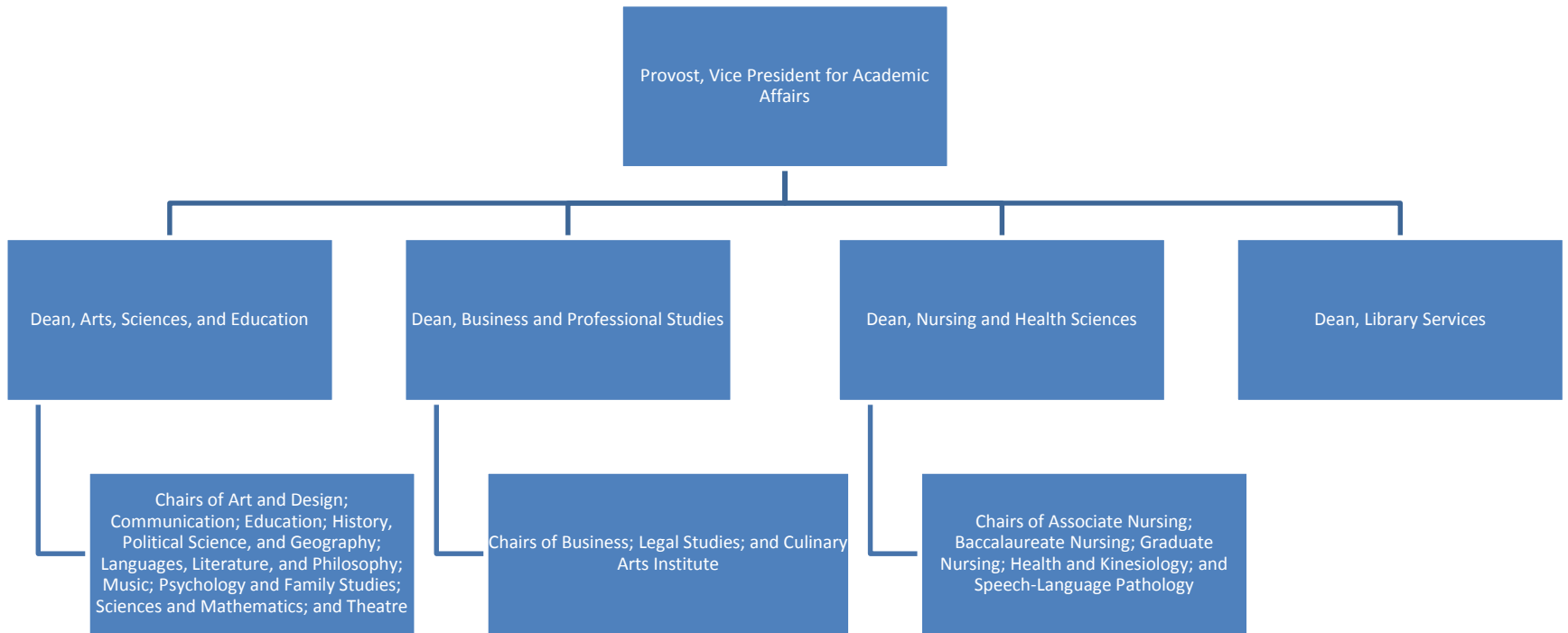
Accredited Program	Campus Contact for Accreditation	Accrediting Body (Acronym)	Website of Accrediting Body	Last* Visit	Next Visit	Required Institutional Action/Interim Reports	Accreditation Agency Action	Annual Fee: Membership	Size of Team/ Length of Visit
Bachelors, Elementary Education	Dr. Brian Anderson	Association for Childhood Education International (ACEI)	www.acei.org			Submitted an initial report 9-15-12, submitted a response to conditions, 3-15-12	Nationally recognized through 2019		Offsite electronic submission and review
Spanish – Teacher Certification	Ms. Erinn Holloway	American Council on the Teaching of Foreign Languages (ACTFL)	www.actfl.org			Granted deferment from review because of low enrollment in program.			
Masters program in Educational Leadership	Dr. Brian Anderson	Educational Leadership Constituent Council (ELCC, representing AASA, ASCD, NAESP, NASSP)	www.aasa.org			Submitted an initial report, 9-15-12	Nationally recognized through 2019		Offsite electronic submission and review
Masters program in Reading/Literacy	Dr. Brian Anderson	International Reading Association (IRA)	www.reading.org			Submitted an initial report, 9-15-12	Nationally recognized through 2019		Offsite electronic submission and review
Bachelors, Social Studies Teacher Certification	Dr. Jonathan Hooks	National Council for Social Studies (NCSS)	www.socialstudies.org			Submitted an initial report, 9-15, 12, and responses to conditions, 3-15-12 & 9-15-12	Nationally recognized through 2019		Offsite electronic submission and review

Accredited Program	Campus Contact for Accreditation	Accrediting Body (Acronym)	Website of Accrediting Body	Last* Visit	Next Visit	Required Institutional Action/Interim Reports	Accreditation Agency Action	Annual Fee: Membership	Size of Team/ Length of Visit
Bachelors, English with Teacher Certification	Dr. Brian Anderson	National Council of Teachers of English (NCTE)	www.ncte.org			Submitted an initial report, 9-15-12	Nationally recognized through 2019		Offsite electronic submission and review
Bachelors, Mathematics with Teacher Certification	Dr. Bonnie Oppenheimer	National Council for Teachers of Mathematics (NCTM)	www.nctm.org			Granted deferment from review because of low enrollment in program			
Bachelors, Biology with Teacher Certification	Dr. Blanca Simmons-Diez	National Science Teachers Association (NSTA)	www.nsta.org			Submitted an initial report, 3-15-12, submitted a second report , 3-15-13			Offsite electronic submission and review
Masters in Gifted Studies	Dr. Royal Toy	National Association of Gifted and Talented	www.nagc.org			Submitted an initial report, 9-15-11, submitted a response to conditions, 9-15-12	Nationally recognized through 2019		Offsite electronic submission and review
Masters of Arts in Teaching	Dr. Brian Anderson	NCATE	www.ncate.org		Fall 2019	Submitted an initial report, 9-15-11, submitted a response to conditions, 9-15-12	Low enrollment program, further development required		Offsite electronic submission and review

Provost / Vice President for Academic Affairs



Academic Units



Appendix A: Endnotes

All data prior to fall 2017 have been updated to reflect the fall 2017 college, department, program structure. Prior to fall 2017, the College of Arts, Sciences, and Education was coded as the College of Arts & Sciences and the College of Nursing & Health Sciences was coded as the College of Nursing & Speech-Language Pathology.

The College of Education & Human Sciences was dissolved during the fall 2017 college restructure. It housed three departments: Education, Psychology & Family Studies, and Health & Kinesiology. The Departments of Education and Psychology & Family Studies were moved to the College of Arts, Sciences, and Education. The Department of Health & Kinesiology was moved to the College of Nursing & Health Sciences.

Changes within the College of Arts, Sciences & Education

Department of Art & Design

- The Art Education and Fine Art [BA] programs are being phased out.
- Prior to fall 2016, 'Fine Arts - Studio Art' was coded as 'Studio Art' and 'Fine Arts - Studio - Graphic' was coded as 'Graphic Design'
- Prior to fall 2016, all pre-Fine Arts majors [BFA] were included with the Fine Arts [BA] majors.
- Fall 2017 forward, all pre-majors will be coded in a degree program. All pre-art majors will be coded in Fine Arts - Studio Art [BFA] and Fine Arts - Studio - Graphic [BFA].

Department of Education

- Differentiated Instruction [MEd] is being phased out.
- In fall 2018, the Educational Leadership [MEd], Gifted Studies [MEd], and Reading/Literacy [MEd] programs were consolidated into Education [MEd].
- Fall 2017 forward, all pre-majors will be coded in a degree program. The pre-Elementary Education majors will be coded within the Interdisciplinary Studies [BS] program. That program is currently housed in the Department of History, Political Science, & Geography.
- Prior to Fall 2016, Secondary Teacher Ed (Alt Rte) was coded as Education (MAT).

Department of History, Political Science, & Geography

- Social Sciences [BA, BS] is being phased out.
- Fall 2017 forward, the pre-Elementary Education majors will be coded within the Interdisciplinary Studies [BS] program

Department of Sciences & Mathematics

- The Mathematics - Pre-Engineering [BA, BS] concentration is being phased out.

Department of Theatre

- Physical Theatre is being phased out.

Changes within the College of Business & Professional Studies

Department of Business

- The Accounting [BS] major has been discontinued and restructured to a concentration within Business Administration [BBA].
- The Global Commerce [MS] program has been discontinued and restructured/renamed to Business Administration [MBA].
- General Studies [BS] is being phased out. General Studies [BA] was restructured/renamed to Professional Studies [BPS]. Prior to Fall 2017, General Studies was housed in the Department of Health & Kinesiology. Fall 2017 forward, the program will be housed in the Department of Business.
- The Professional Studies [BT] program has been discontinued and restructured/renamed to Business Administration [BAS].
- Fall 2016 forward, the Business Administration programs/concentrations will contain both the BAS and BS degree programs.
- Public-Safety Administration is being phased out.

Changes within the College of Nursing & Health Sciences

Department of Associate Nursing

- Fall 2017 forward, all pre-majors will be coded in a degree program. Pre-Nursing ASN majors will be coded in Public Health Education [BS].

Department of Baccalaureate Nursing

- Fall 2017 forward, all pre-majors will be coded in a degree program. Pre-Nursing BSN majors will be coded in Public Health Education [BS].
- The Pre-Nursing BSN – Tupelo major was phased out in fall 2017.

Department of Graduate Nursing

- Psychiatric Mental Health [MSN] is being phased out.
- The Post Masters Certificate Nursing [PMC] has been discontinued and restructured/renamed to Post - Graduate Adv Pr Reg Nurse [PMC].

Department of Health & Kinesiology

- The General Studies program was moved to the Department of Business in fall 2017.
- Fall 2017 forward, Pre-Occupational Therapy [BS] will be coded in Kinesiology-Exercise Science [BS].
- The Health Education [MS] program has been discontinued and restructured/renamed to Public Health [MPH].
- Prior to Fall 2017, 'Kinesiology - Exer Sci - Phys Ther' was coded as 'Exercise Sci-Physical Therapy'.

Appendix B: Explanation of Terms

Academic Year is the year that begins with the first summer session and continues through the next spring session; for example, Academic Year 2018-2019 refers to Summer 2018, Fall 2018, and Spring 2019.

ACT is the American College Test, which is divided into four main sections: Mathematics, English, Reading, and Science Reasoning.

Census Date is the official reporting date of a semester. For AY 2018-19, the census date is November 1st for the fall 2018 semester and April 1st for spring 2019 semester. Prior to AY 2018-19, for the fall and spring semesters, there was a census window between the 10th and 15th class days; MUW typically selected the 10th day of classes as the census date. For summer, the census window is immediately following the official 'drop without penalty' date for each individual term. The census window for summer did not change in AY 2018-19. Summer enrollment is created by combining the individual terms.

CIP Codes are the Classification of Instructional Program Codes that are updated every 10 years. We are currently operating under the 2010 CIP Codes. These six-digit codes are used to answer questions concerning program enrollments and completions on three of the IPEDS Surveys: Institutional Characteristics, Completions, and Enrollment.

Cohort refers to a specific population, which is studied over a period of time, such as a group of students who enrolled for the first time in the Fall of 2018.

EMAS is the Enrollment Management Action System software that is used by the Admissions Office.

Fiscal Year is the year that begins on July 1 and ends on June 30; for example, Fiscal Year 2018-2019 (FY 2019) extends from July 1, 2018 through June 30, 2019.

Full-time graduate student is one who is enrolled in 9 or more semester credit hours.

Full-time undergraduate student is one who is enrolled in 12 or more semester credit hours.

Graduate FTE (full-time equivalent) is calculated by dividing total graduate semester credit hours by 12.

Headcount as defined by IHL is the actual number of different individuals enrolled in credit courses. Headcount can be unduplicated or duplicated; a duplicated headcount duplicates students who take classes on more than one campus. According to IHL's duplicated headcount definition, an undergraduate student who takes nine hours on main campus and three hours at

Tupelo is counted as two part-time undergraduate students. In duplicated headcount, a student's full-time/part-time status is determined by hours per campus not total hours taken.

IHL refers to the Board of Trustees of State Institutions of Higher Learning in Mississippi.

IHL Course File documents credit hour production by academic level and discipline for an academic term.

IHL Degree File contains the students receiving an IHL approved degree and/or certificate during an academic year.

IHL Employee File contains personnel data for each part-time and full-time employee on the payroll of the institution as of the official reporting date, November 1st.

IHL Instructional File contains academic and other information on those employees who are on the institution's payroll as of the official reporting date, November 1st, and serve in an instructional capacity at the institution.

IHL Student File includes information on all students enrolled at an institution on the census date who are taking academic courses while paying, or making financial arrangements to pay (including loans, scholarships, etc.), for the courses.

IPEDS is the Integrated Post-secondary Education Data System.

Non-traditional student, as defined by IHL, refers to an undergraduate student who is 25 years of age or over.

Part-time graduate student is one who is enrolled in less than 9 semester credit hours.

Part-time undergraduate student is one who is enrolled in less than 12 semester credit hours.

Ranked faculty are full-time faculty positions including instructors, assistant professors, associate professors, and professors.

SREB (Southern Regional Education Board) States include: Alabama, Arkansas, Delaware, Florida, Georgia, Kentucky, Louisiana, Mississippi, Maryland, North Carolina, Oklahoma, South Carolina, Tennessee, Texas, Virginia, and West Virginia.

Student Level, as defined by IHL

Definitions Effective as of the Beginning of Summer 2001

Freshmen – Students who have completed less than 30 semester hours.

Sophomores – Students who have completed at least 30 semester hours, but fewer than 60 semester hours.

Juniors – Students who have completed at least 60 semester hours, but fewer than 90 semester hours.

Seniors – Students who have completed at least 90 semester hours, but have not completed all the requirements for the undergraduate degree for which she/he is currently enrolled.

Fifth Year Level – Student is at advanced undergraduate upper level in five-year programs (e.g. architecture and engineering) or students with a bachelor's or higher degree who are taking additional undergraduate courses.

Master's – Student is in a program or degree that usually covers one year and approximately 30 semester hours above the baccalaureate.

Specialist – Student is in a program or degree that usually covers one year and approximately 30-36 semester hours above the baccalaureate.

Doctoral – Student is in a program or degree that usually covers two years and approximately 60 semester hours above the master's

Unclassified Post-baccalaureate – Student is not a candidate for a Baccalaureate degree or other formal award, although taking graduate classes with other students. Includes but is not limited to “special” and other students taking first-professional or graduate courses, but who are not working toward a degree.

First Professional – Student is in the first year of a Year/Level 1 program or degree leading to the first level of professional training, as recognized by others in the profession. Examples: J.D., M.D., D.V.M. etc.

Total Operating Budget includes restricted, designated, and auxiliary funding.

Type of current registration as defined by IHL:

First-time Freshman – (First-time Freshman--(1) A student who has never attended a college or university; or (2) a student who has previously attended any college or university for the first time in the prior summer term; or (3) a recent high school graduate who graduated in May and enrolled the following Fall term (regardless of summer enrollment); or (4) a student who successfully completed the twelve hour Summer Developmental Program regardless of the institution

attended; or (5) a student with advanced standing (AP, CLEP or college credits earned before high school graduation).

As a general rule, recent high school graduates who enroll in the fall term after graduation should be counted as first-time freshmen, regardless of their academic activity between graduation and their fall enrollment. Students who skip the fall term and enter in the spring are still considered to be first-time freshmen if they have not attended another postsecondary institution. However, students who skip the fall and enroll in the spring with any prior coursework after high school are considered to be first-time transfers.

Note: Starting with the Summer 2009 term, the 12-hour requirement for first-time freshmen has been omitted in order to meet IPEDS criteria. Prior to that time first-time entering freshmen could not have more than 12 hours.

Unusual Examples of First-time Freshman:

A student completes the 9-week Summer Developmental Program at MSU and enrolls at MUW the following fall term. The student would be a first-time freshman at MUW.

All Summer Developmental Program students are to be coded as first-time freshmen regardless of institution attended.

A student graduates from Biloxi high school in May, earns 6 AP hours, takes 12 credit hours at Gulf Coast Community College the following summer, and enrolls at MUW the following fall. The student would be a first-time freshman at MUW.

A student graduates from Biloxi high school in May, takes 9 credit hours at Gulf Coast Community College the following summer, and enrolls at MUW the following spring term (he or she skips the fall term to work). *The student would be a first-time transfer at MUW.*

A student graduates from Tupelo high school in May, earns 15 AP hours, takes 15 credit hours at Northwest Community College the following summer, and enrolls at MUW the following fall. The student would be a first-time freshman at MUW (but have a sophomore academic level)

Returning Undergraduate Student – An undergraduate student who has registered at this institution during the preceding regular term and would not be classed as a first-time freshman.

Readmitted Student – An undergraduate student who previously attended this institution but did not attend this institution during the previous regular term.

First-Time Transfer Student --An undergraduate student entering the reporting institution for the first time who previously attended another postsecondary institution---exceptions include the first-time freshmen criteria outlined above. *These students may or may not have transfer credit hours.*

Note: Starting with the Summer 2009 semester, the 12-hour requirement for first-time transfers has been omitted in order to meet IPEDS criteria. Prior to that time first-time transfers were required to have at least 12 hours from another institution.

Note: Starting in Summer 2015, a student considered to be a first-time transfer student in the summer term should also be considered a first-time transfer student in the fall term (just as

summer first-time freshmen are also first-time freshmen in the fall).

Unusual Examples of First-time Transfers:

A student attends Gulf Coast Community College as an entering freshman during the fall term and enrolls in 12 hours, but he or she is unable to complete the semester because of a medical hardship. When the student enrolls at MUW the following spring term, he or she is a first-time transfer student despite having no transferable hours (previously attended institution).

A student graduates from Biloxi high school in May, takes 9 credit hours at Gulf Coast Community College the following summer, and enrolls at MUW the following spring term (he or she skips the fall term to work). *The student would be a first-time transfer at MUW.*

Returning or Transfer Graduate Students – A student who is enrolled for credit for work creditable toward a graduate degree, i.e., master’s, specialist, or doctorate and was previously registered as a graduate student at this institution or another institution.

First-Professional Student – A student who is enrolled for work creditable toward a first professional degree (law, dentistry, medicine)

Transient Student – A student who is regularly enrolled and in good standing at an institution other than the reporting institution and is taking a course or courses at the reporting institution which he/she intends to transfer to his/her regular institution.

High School Student Taking College Courses – A student who is still in high school but has special permission to take a college level course.

Non-formula Students 21 and over - A student who is currently registered under provisions or original admission code of 6 on data element 4-112 which is for students who are at least age 21 and who do not meet admissions standards and who do not fall into the first five Original Admission Code categories.

First-time graduate student – A new graduate student. One who has not been registered previously as a graduate student.

Other – A student who is not classified in one of the preceding categories.

Summer Developmental Program Participant – A student enrolled in the Summer Developmental Program. Valid in summer term only.

Returning Post Baccalaureate - A student who has already earned his or her baccalaureate degree (from any institution) and is taking additional undergraduate or graduate courses to continue his or her education. This is typically a non-degree student who is not enrolled in an academic program. This may include faculty and staff taking courses for lifelong learning.

Unduplicated headcount figures count each individual student once regardless of the number of branch campus affiliations (Gulf Coast, Hinds, Tupelo, Italy).

Undergraduate FTE (full-time equivalent) is calculated by dividing total undergraduate semester credit hours by 15.

University Abbreviations:

ASU	Alcorn State University
DSU	Delta State University
JSU	Jackson State University
MSU	Mississippi State University
MUW	Mississippi University for Women
MVSU	Mississippi Valley State University
UM	University of Mississippi
UMMC	University of Mississippi Medical Center
USM	University of Southern Mississippi
MSU-AFVM	Mississippi State University's Division of Agriculture, Forestry, and Veterinary Medicine
USM-GCRL	University of Southern Mississippi's Gulf Coast Research Laboratory
USM-Stennis	University of Southern Mississippi's Stennis Space Center



CAMPUS DIRECTORY

1100 COLLEGE STREET, COLUMBUS, MS

Art and Design Building	10	MUW Counseling Center	50
Barbara Garrett Tennis Facility	56	Marie Charlotte Stark Recreation Building	59
Barrow Hall and Physical Plant	54	Martin Hall	7
Callaway Hall	26	Mary Wilson Home	18
Carrier Chapel	22	McDevitt Hall	36
Child/Parent Development Center	49	Motor Pool	47
Columbus Hall	28	Nancy Harris Hogarth Cafeteria	37
Cromwell Communications Center	51	Orr Annex	24
Demonstration School	9	Orr Building	25
Eckford Building (Health Center)	8	Painter Hall	5
Education & Human Sciences	48	Parkinson Hall	6
Emma Ody Pohl Physical Education Building	58	Peyton Hall	35
Eudora Welty Hall	23	Pohl Recreation	21
Facilities Maintenance Shop	66	Poindexter Hall	30
Fant Hall	20	President's Home	55
Fant Memorial Library	15	Puckett House	2
Franklin House	31	Reneau Hall	17
Frazer Hall	13	Soccer Field	45
Goen Hall	14	Shattuck Hall	32
Greenspace	52	Stovall House (Welcome Center)	3
Grossnickle Hall	4	Support Building	57
Grounds Maintenance & Automotive Building	46	Support Building	67
Hastings-Simmons Hall	29	Thad & Rose Cochran Hall	27
Hogarth Student Union	38	University Apartment Bld. 3	60
Hooper Science Hall	16	University Apartment Bld. 1	61
Jones Hall	12	University Apartment Bld. 2	62
Kincannon Hall	11	University Apartment Bld. 4	63
Legacy Garden	19	University Apartment Bld. 5	64
MSMS Performing Arts Center	44	University Apartment Bld. 6	65
MSMS Student Services	43	Whitfield Hall	1



- Administrative
- Academic
- Residential
- Support
- MSMS
- Decommissioned



muw.edu